

# Planning Bundle 1

Amendments to Residential Unit Mix  
(Clean Building Footprint Scheme)

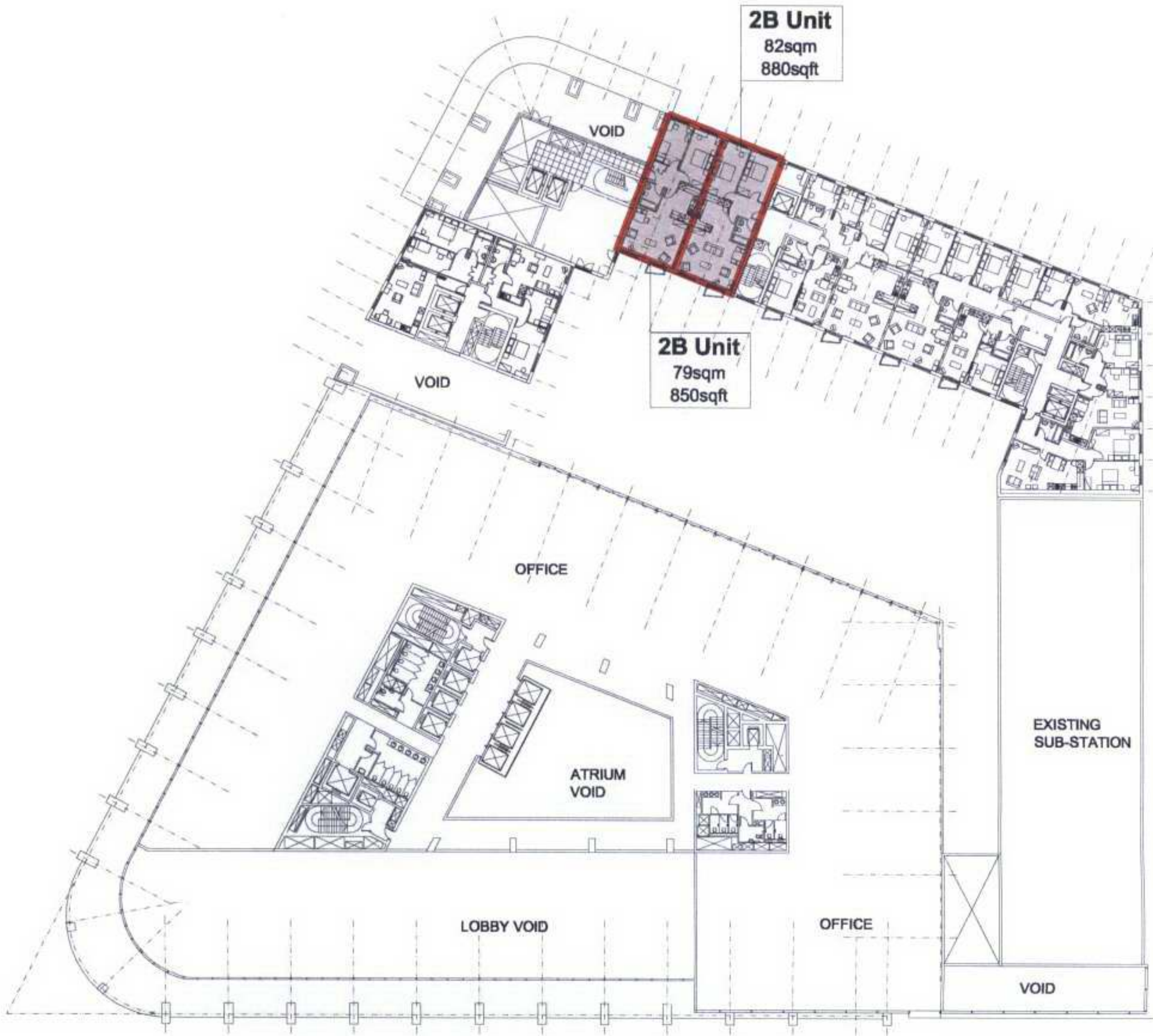


# Consented Planning Scheme Drawing

TRINITY MEWS  
1st Floor

No1 SOANE STREET  
1st Floor

No1 GREAT PORTLAND SQ  
1st Floor



**NOTE:**  
Previously approved drawing - area as indicated to be amended.

British Land

FARRELLS

REGENT'S PLACE  
OSNABURGH STREET  
**LEVEL 1**  
PLANNING APPLICATION  
SCALE 1:200 @A0  
Revised 05 September 2006  
RP/PA05-101-G  
09 September 2006



SCALE 1:200 @A0  
RP/PA05-101-G

0m 10 20

TRINITY MEWS  
02, 03



No 1 SOANE ST  
02

No 1 GREAT  
PORTLAND SQ  
02



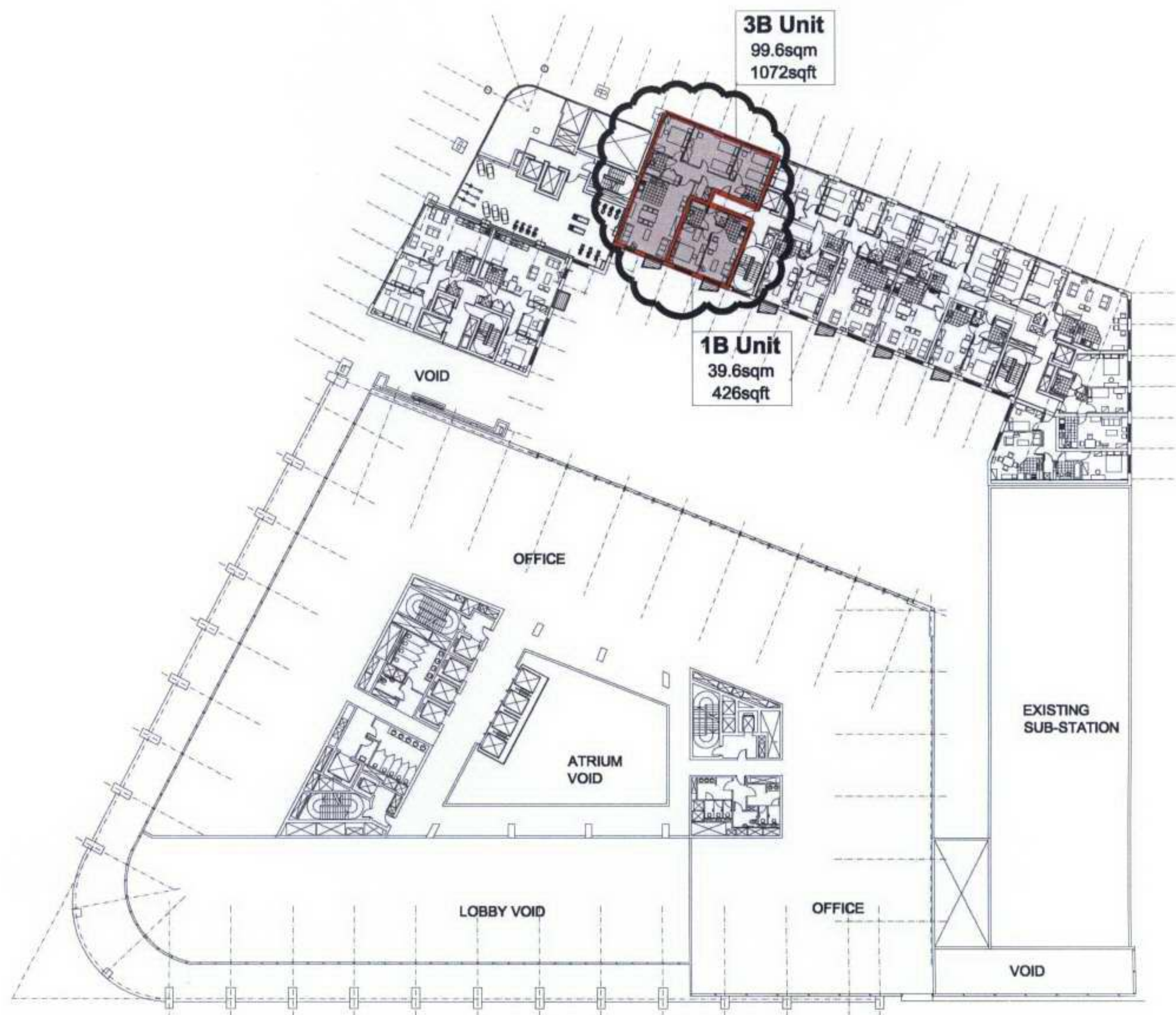


# Proposed Amendments to Planning Drawing

TRINITY MEWS  
1st Floor

No1 SOANE STREET  
1st Floor

No1 GREAT PORTLAND SQ  
1st Floor



**NOTE:**  
Proposed amendments as indicated within bubbled area.

British Land

FARRELLS

REGENT'S PLACE  
OSNABURGH STREET  
**LEVEL 1**  
PLANNING APPLICATION  
SCALE 1:200 @A0  
Revised 16 February 2007  
RPPA05-101-G.1  
09 September 2005



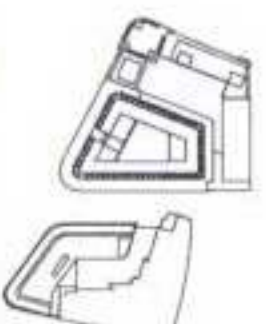
SCALE 1:200 @A0  
RPPA05-101-G.1

0m 10 20

TRINITY MEWS  
02, 03

No 1 SOANE ST  
02

No 1 GREAT  
PORTLAND SQ  
02





# Consented Planning Scheme Drawing

TRINITY MEWS  
2nd - 3rd Floor (Level 2 shown)  
\* Note: Level 2 Tower Accomodation - Intermediate  
Level 3 Tower Accomodation - Private

No1 SOANE STREET  
2nd Floor

No1 GREAT PORTLAND SQ  
2nd Floor



**NOTE:**  
Previously approved drawing area as indicated to be amended.

British Land

FARRELLS

REGENT'S PLACE  
OSNABURGH STREET  
**LEVEL 2**  
PLANNING APPLICATION  
SCALE 1:200 @A0  
Revised 05 September 2006  
RP/PA/05-102-G  
09 September 2006



SCALE 1:200 @A0  
RP/PA/05-102-G

0m 10 20

TRINITY MEWS  
02, 03



No 1 SOANE ST  
02

No 1 GREAT  
PORTLAND SQ  
02





# Proposed Amendments to Planning Drawing

TRINITY MEWS  
2nd - 3rd Floor

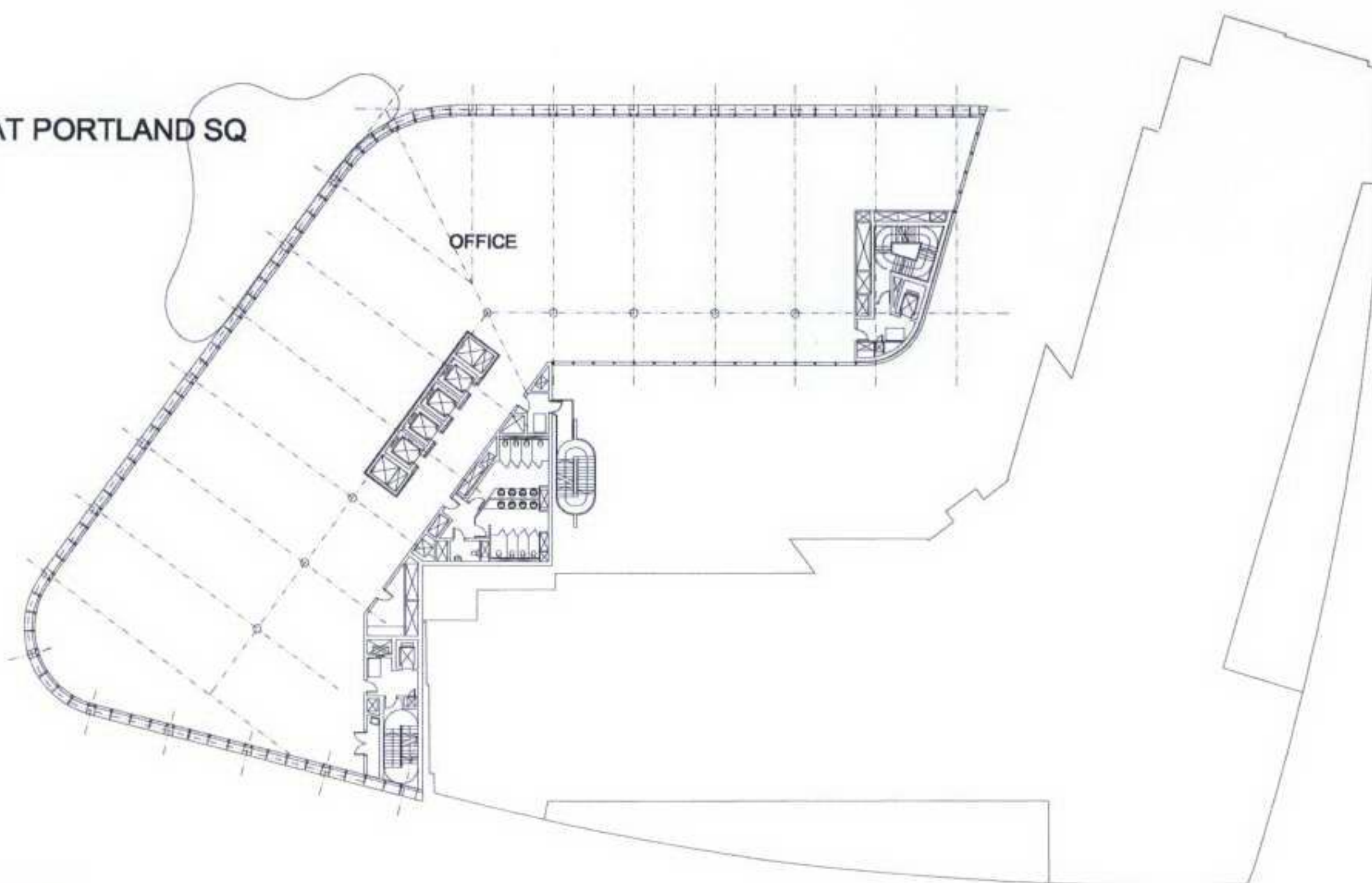
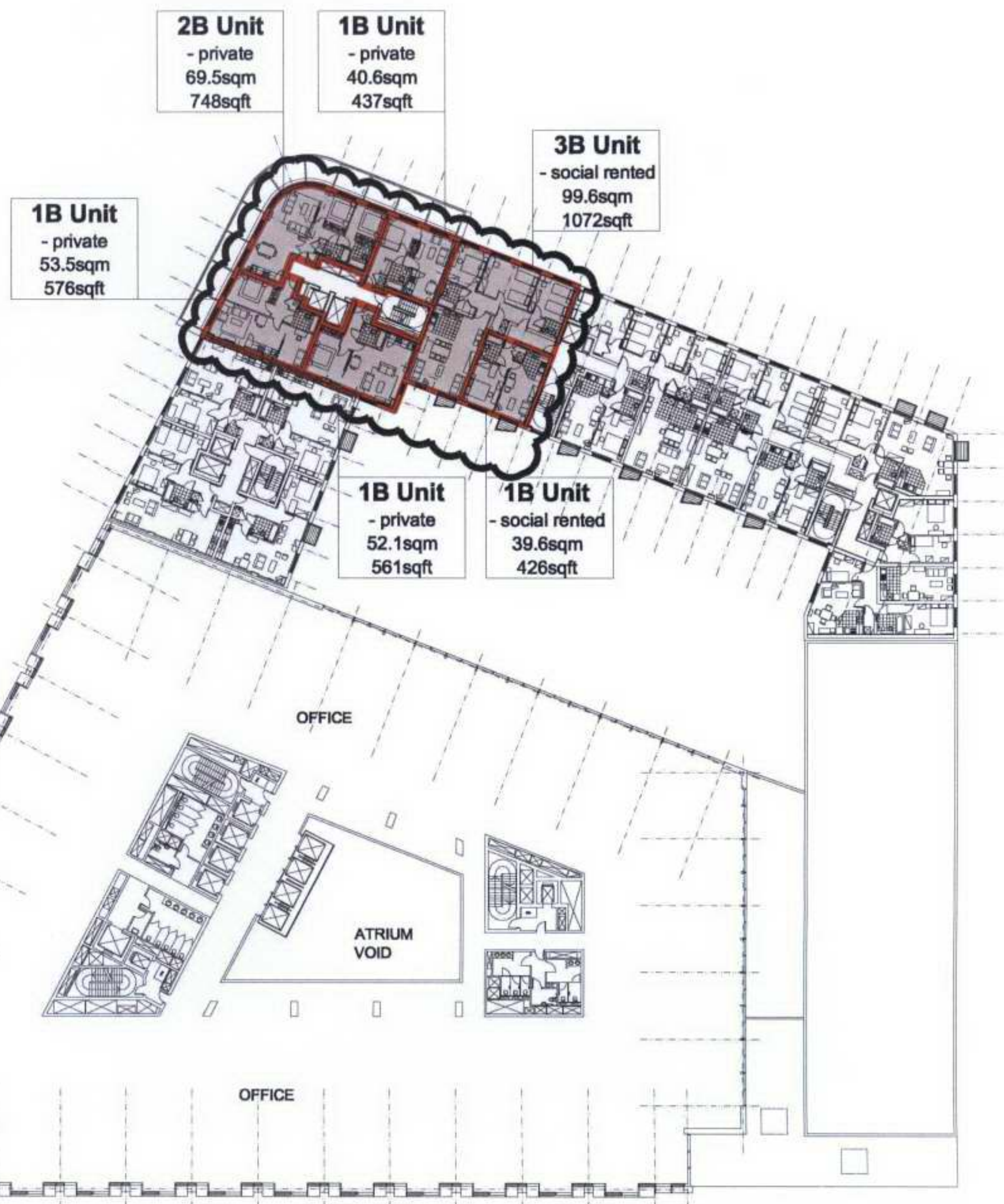
\* **Note:** Level 2 Tower Accomodation - all units change to private from intermediate. Level 3 Tower Accomodation - no change - all units remain private.

No1 SOANE STREET  
2nd Floor

No1 GREAT PORTLAND SQ  
2nd Floor



**NOTE:**  
Proposed amendments as indicated within bubbled area.



British Land

FARRELLS

REGENT'S PLACE  
OSNABURGH STREET  
**LEVEL 2**  
PLANNING APPLICATION  
SCALE 1:200 @A0  
Revised 16 February 2007  
RP/PA05-102-G.1  
09 September 2005



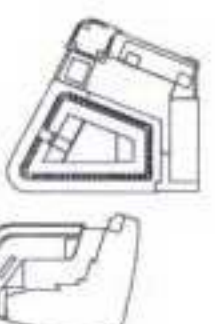
SCALE 1:200 @A0  
RP/PA05-102-G

0m 10 20

TRINITY MEWS  
02, 03

No 1 SOANE ST  
02

No 1 GREAT  
PORTLAND SQ  
02



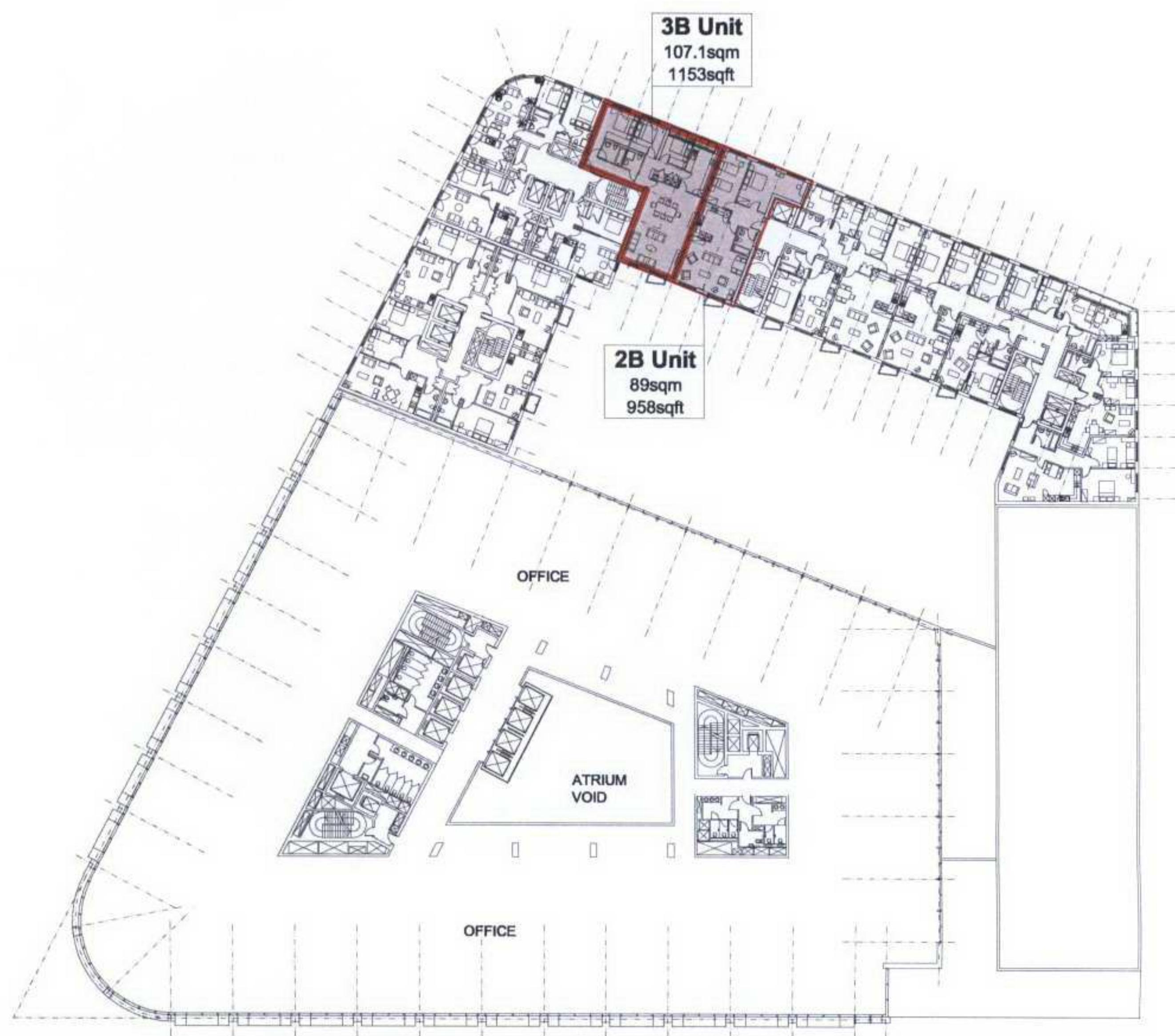


# Consented Planning Scheme Drawing

TRINITY MEWS  
4th - 5th Floor

No1 SOANE STREET  
3rd Floor

No1 GREAT PORTLAND SQ  
3rd Floor



**NOTE:**  
Previously approved drawing as indicated to be amended.

British Land

FARRELLS

REGENT'S PLACE  
OSNABURGH STREET  
**LEVEL 3**  
PLANNING APPLICATION  
SCALE 1:200 @A0  
Revised 05 September 2006  
RP/PA/05-103-G  
09 September 2005



SCALE 1:200 @A0  
RP/PA/05-103-G

0m 10 20



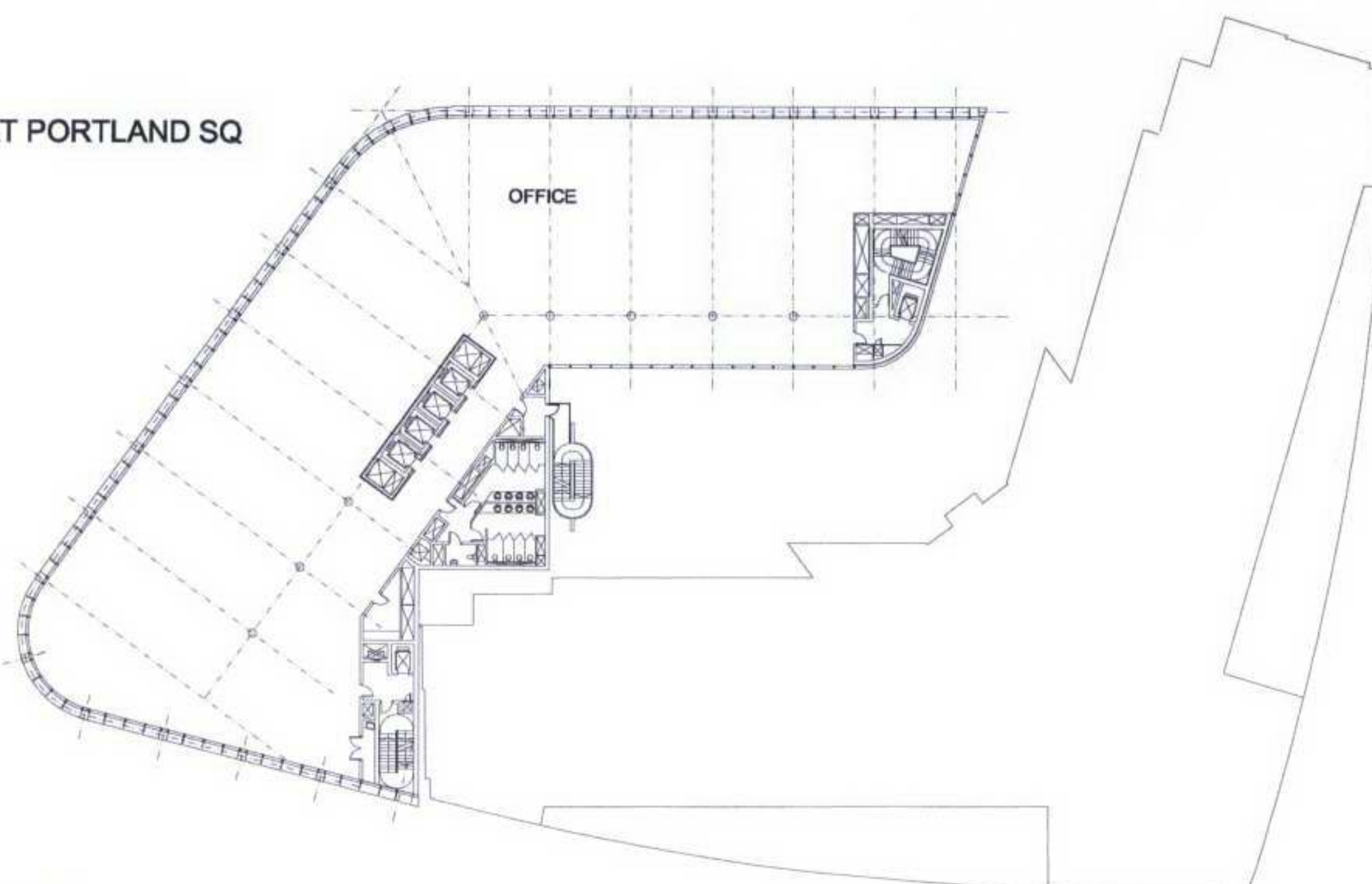
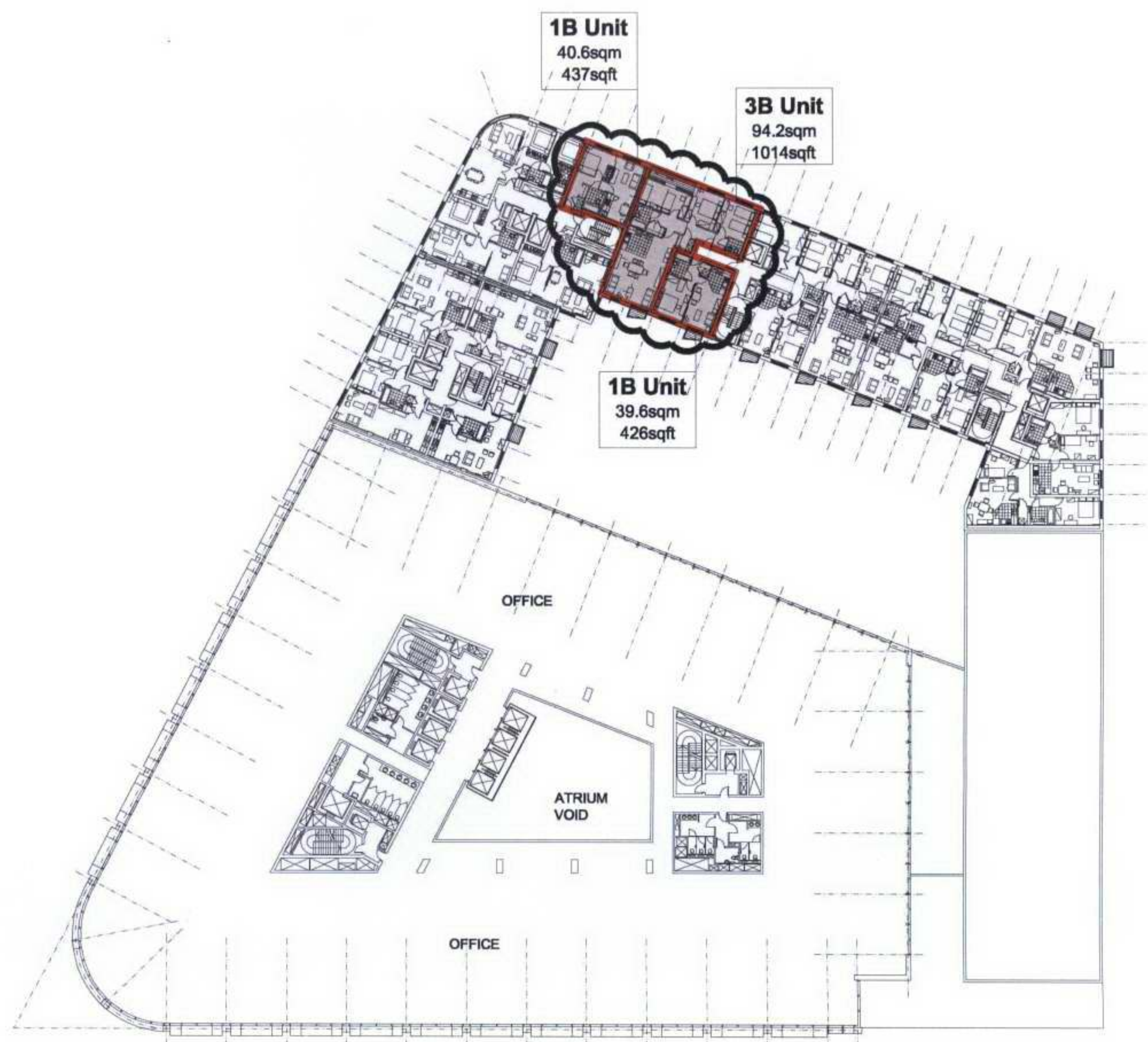


# Proposed Amendments to Planning Drawing

TRINITY MEWS  
4th - 5th Floor

No1 SOANE STREET  
3rd Floor

No1 GREAT PORTLAND SQ  
3rd Floor



**NOTE:**  
Proposed amendments as indicated within bubbled area.

British Land

FARRELLS

REGENT'S PLACE  
OSNABURGH STREET  
**LEVEL 3**  
PLANNING APPLICATION  
SCALE 1:200 @A0  
Revised 16 February 2007  
RPI/PA/05-103-G.1  
09 September 2005



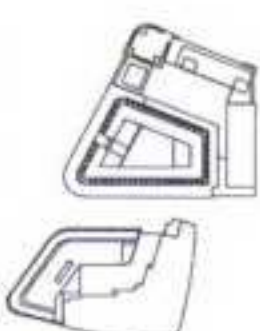
SCALE 1:200 @A0  
RPI/PA/05-103-G.1



TRINITY MEWS  
04-05

No 1 SOANE ST  
03

No 1 GREAT  
PORTLAND SQ  
03





# Consented Planning Scheme Drawing

TRINITY MEWS  
14th Floor

2B Unit  
60sqm  
646sqft

1B Unit  
43.8sqm  
471sqft

No1 SOANE STREET  
10th Floor

PLANT

ATRIUM  
VOID

PLANT

No1 GREAT PORTLAND SQ  
10th Floor

PLANT  
VOID

PLANT  
VOID



**NOTE:**  
Previously approved drawing - area as indicated to be amended.

British Land

FARRELLS

REGENT'S PLACE  
OSNABURGH STREET  
**LEVEL 10**  
PLANNING APPLICATION  
SCALE 1:200 @A0  
RP/PA/05-110-F  
09 September 2005



SCALE 1:200 @A0  
RP/PA/05-110-F

0m 10 20

TRINITY MEWS  
14



No 1 SOANE ST  
10

No 1 GREAT  
PORTLAND SQ  
10



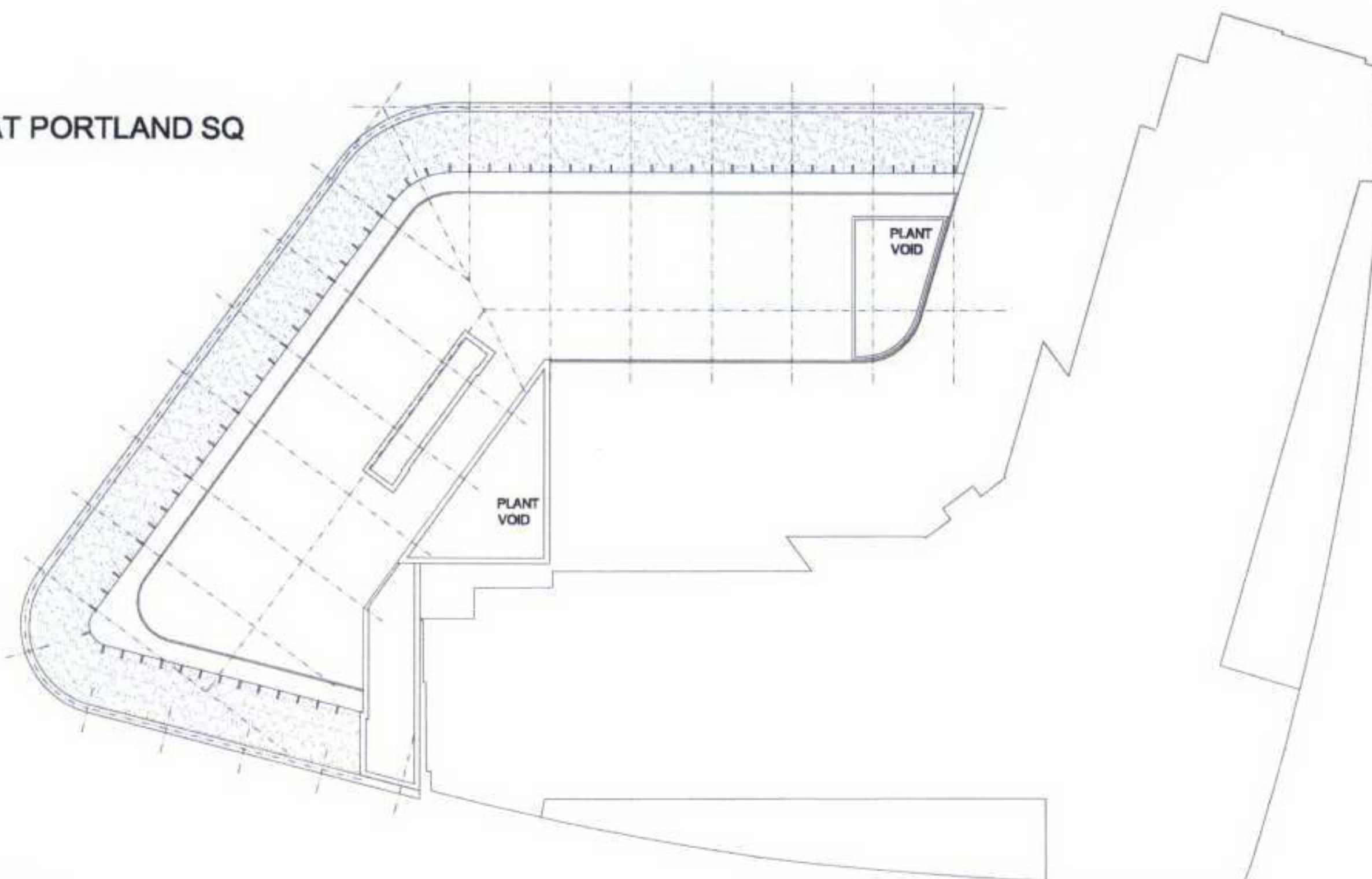
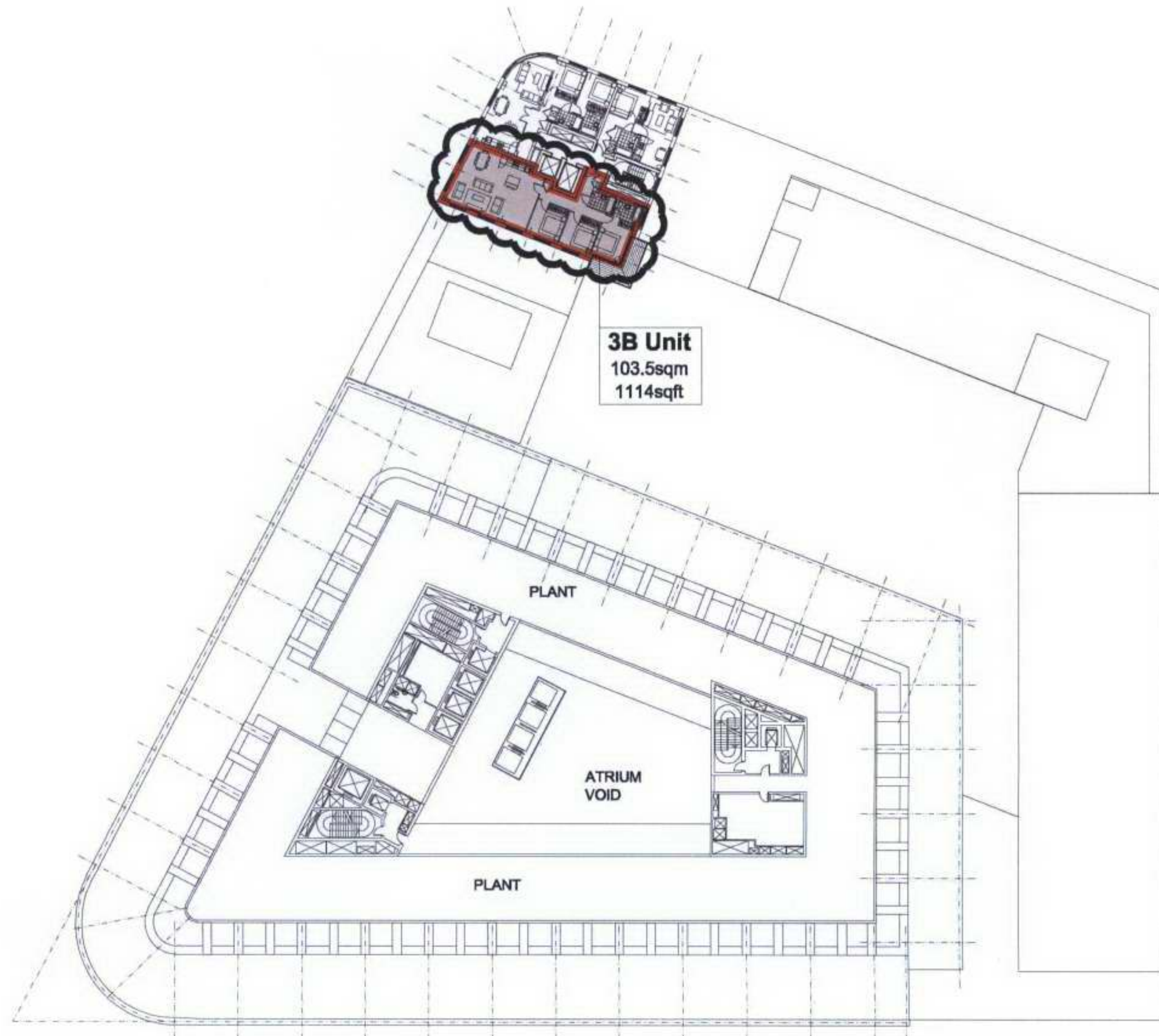


# Proposed Amendments to Planning Drawing

TRINITY MEWS  
14th Floor

No1 SOANE STREET  
10th Floor

No1 GREAT PORTLAND SQ  
10th Floor



**NOTE:**  
Proposed amendments as indicated within bubbled area.

British Land

FARRELLS

REGENT'S PLACE  
OSNABURGH STREET  
**LEVEL 10**  
PLANNING APPLICATION  
SCALE 1:200 @A0  
Revised 21 February 2007  
RPIPA05-110-F.1  
09 September 2005



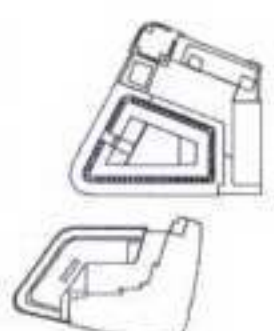
0m 10 20

SCALE 1:200 @A0  
RPIPA05-110-F.1

TRINITY MEWS  
14

No 1 SOANE ST  
10

No 1 GREAT  
PORTLAND SQ  
10





# Consented Planning Scheme Drawing

TRINITY MEWS  
15th Floor

2B Unit  
60sqm  
646sqft

1B Unit  
43.8sqm  
471sqft

No1 SOANE STREET  
11th Floor

PLANT

ROOF

PLANT

No1 GREAT PORTLAND SQ



**NOTE:**  
Previously approved drawing - area as indicated to be amended.

British Land

FARRELLS

REGENT'S PLACE  
OSNABURGH STREET  
**PLANT LEVEL**  
PLANNING APPLICATION  
SCALE 1:200 @A0  
RPIPA05-111-F  
09 September 2005



SCALE 1:200 @A0  
RPIPA05-111-F

0m 10 20

TRINITY MEWS  
15



No 1 SOANE ST  
11

No 1 GREAT  
PORTLAND SQ  
11



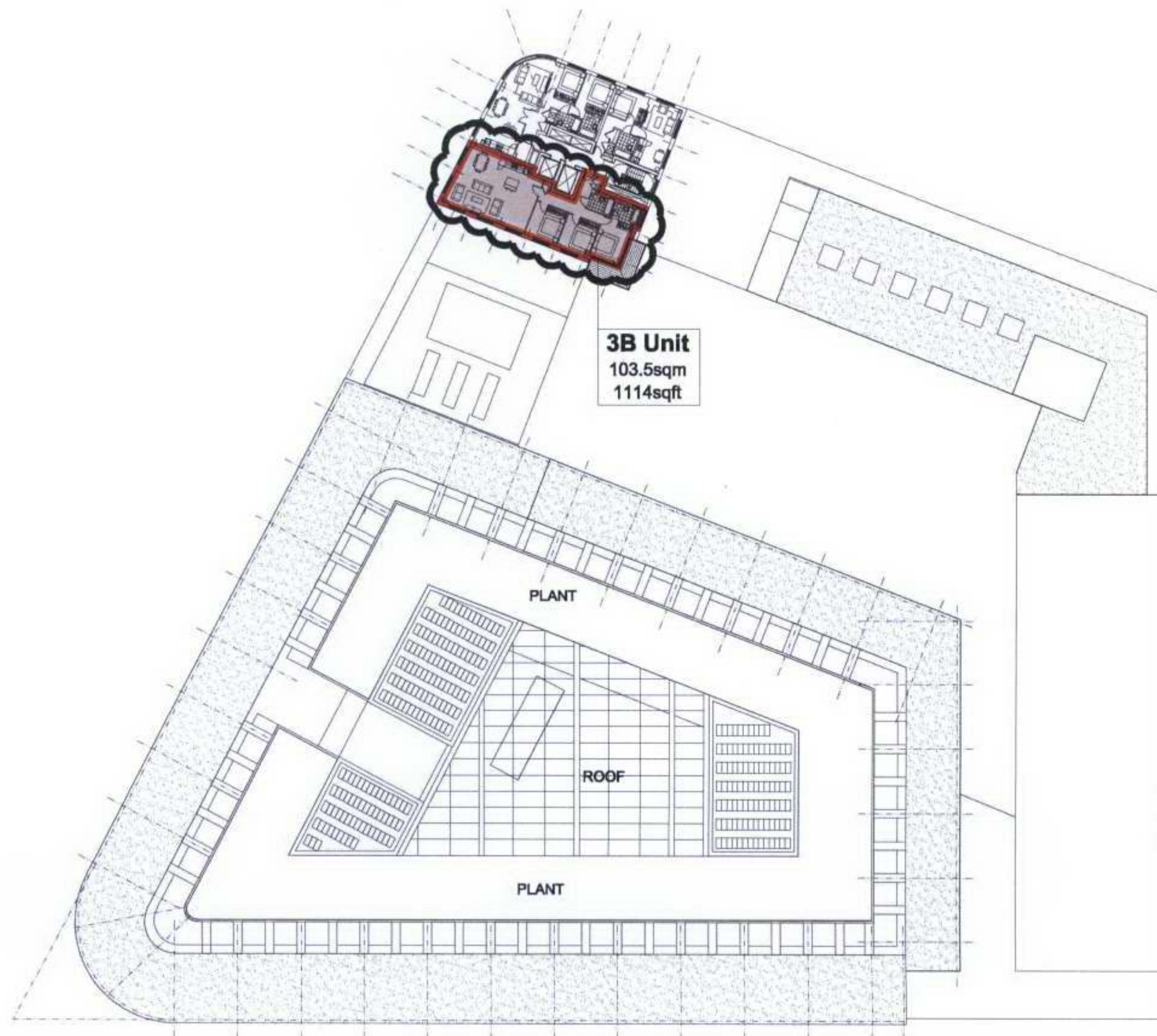


# Proposed Amendments to Planning Drawing

TRINITY MEWS  
15th Floor

No1 SOANE STREET  
11th Floor

No1 GREAT PORTLAND SQ



**NOTE:**  
Proposed amendments as indicated within bubbled area.

British Land

FARRELLS

REGENT'S PLACE  
OSNABURGH STREET  
**PLANT LEVEL**  
PLANNING APPLICATION  
SCALE 1:200 @A0  
Revised 21 February 2007  
RP/PAGS-111-F.1  
09 September 2005



SCALE 1:200 @A0  
RP/PAGS-111-F.1



TRINITY MEWS  
15

No 1 SOANE ST  
11

No 1 GREAT  
PORTLAND SQ  
11

