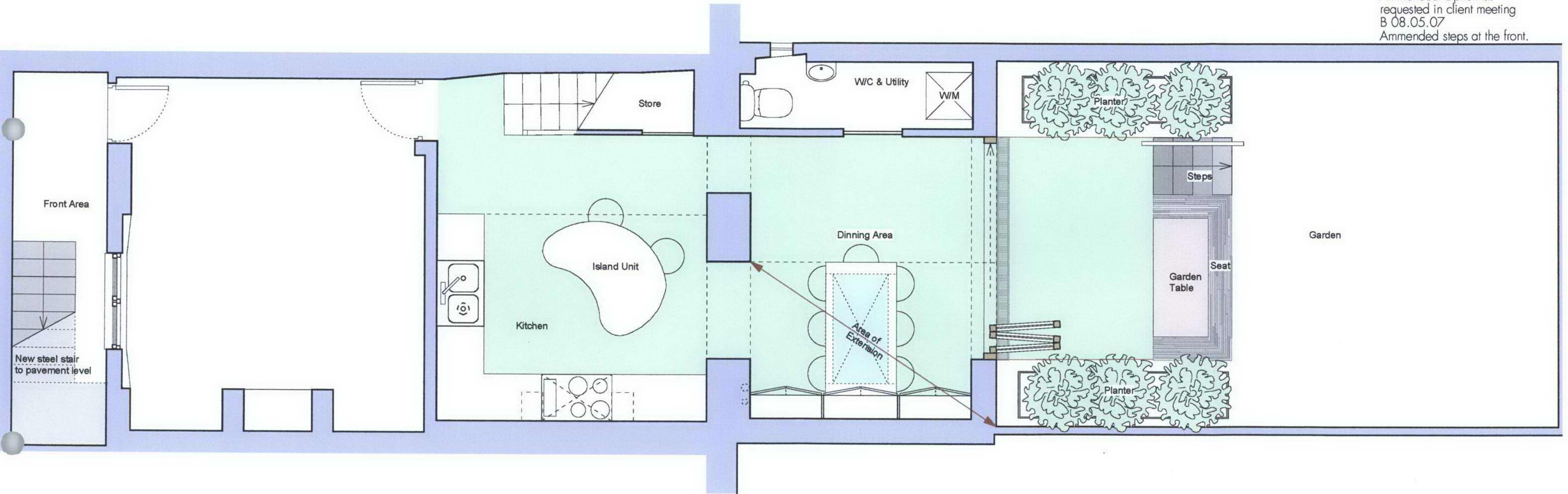


PLANNING

© Knott Architects
98B Tollington Park
London N4 3RB
tel: (020) 72638844
fax: (020) 72634700
mail@knottarchitects.co.uk

Do not scale from this drawing
Use figured dimensions

Revisions
-A 24.03.07
Amended Option as
requested in client meeting
B 08.05.07
Amended steps at the front.



Lower Ground Floor
As Proposed

K N O T T

29 Inkerman Road
Lower Ground Floor
As Proposed

Scale 1:50

Date: April 07

226.050 Rev - B

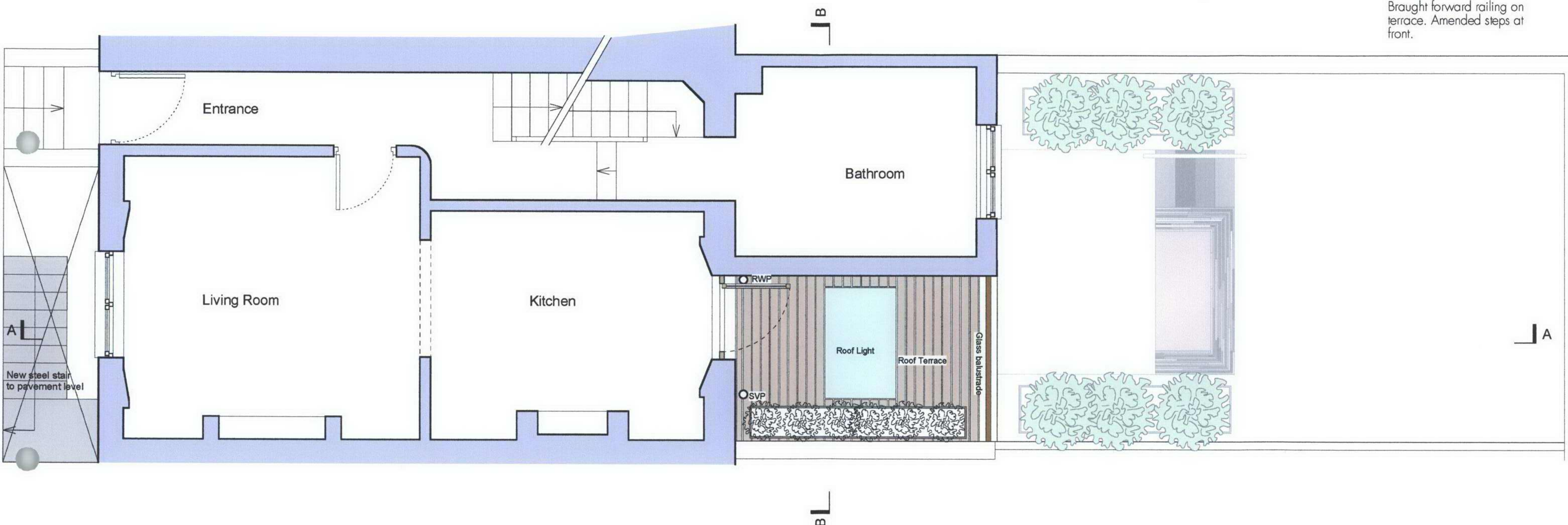
ARCHITECTS

PLANNING

© Knott Architects
98B Tollington Park
London N4 3RB
tel: (020) 72638844
fax: (020) 72634700
mail@knottarchitects.co.uk

Do not scale from this drawing
Use figured dimensions

Revisions
-A - 08.05.07
Brought forward railing on
terrace. Amended steps at
front.



Ground Floor
as Proposed

KNOTT

29 Inkerman Road

Ground Floor
As Proposed

Scale 1:50

Date: April 07

226.051 Rev - A

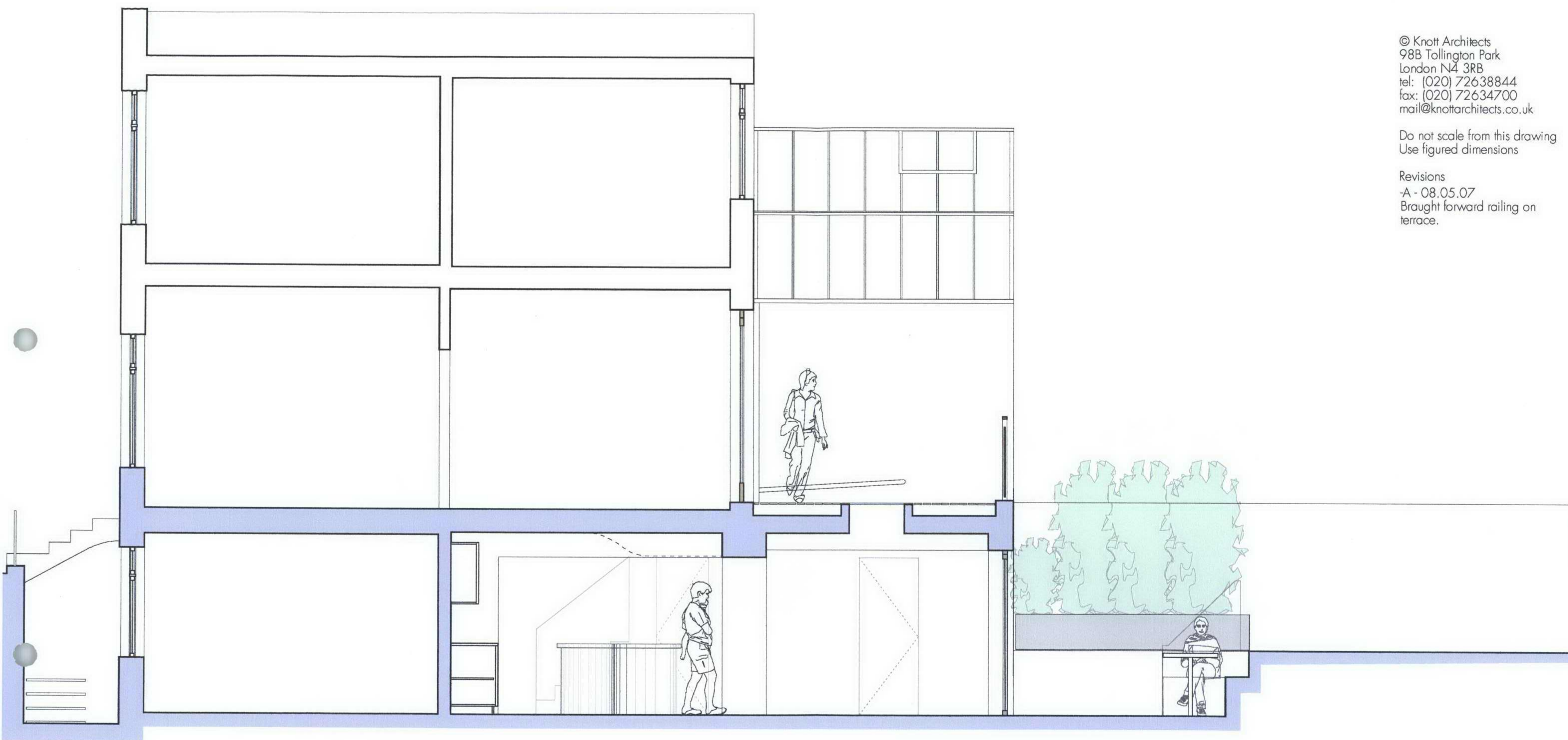
ARCHITECTS

PLANNING

© Knott Architects
98B Tollington Park
London N4 3RB
tel: (020) 72638844
fax: (020) 72634700
mail@knottarchitects.co.uk

Do not scale from this drawing
Use figured dimensions

Revisions
-A - 08.05.07
Brought forward railing on
terrace.



Section A-A
As Proposed

K N O T T

29 Inkerman Road

Section A-A
As Proposed

Scale 1:50

Date: April 07

226.052 Rev - A

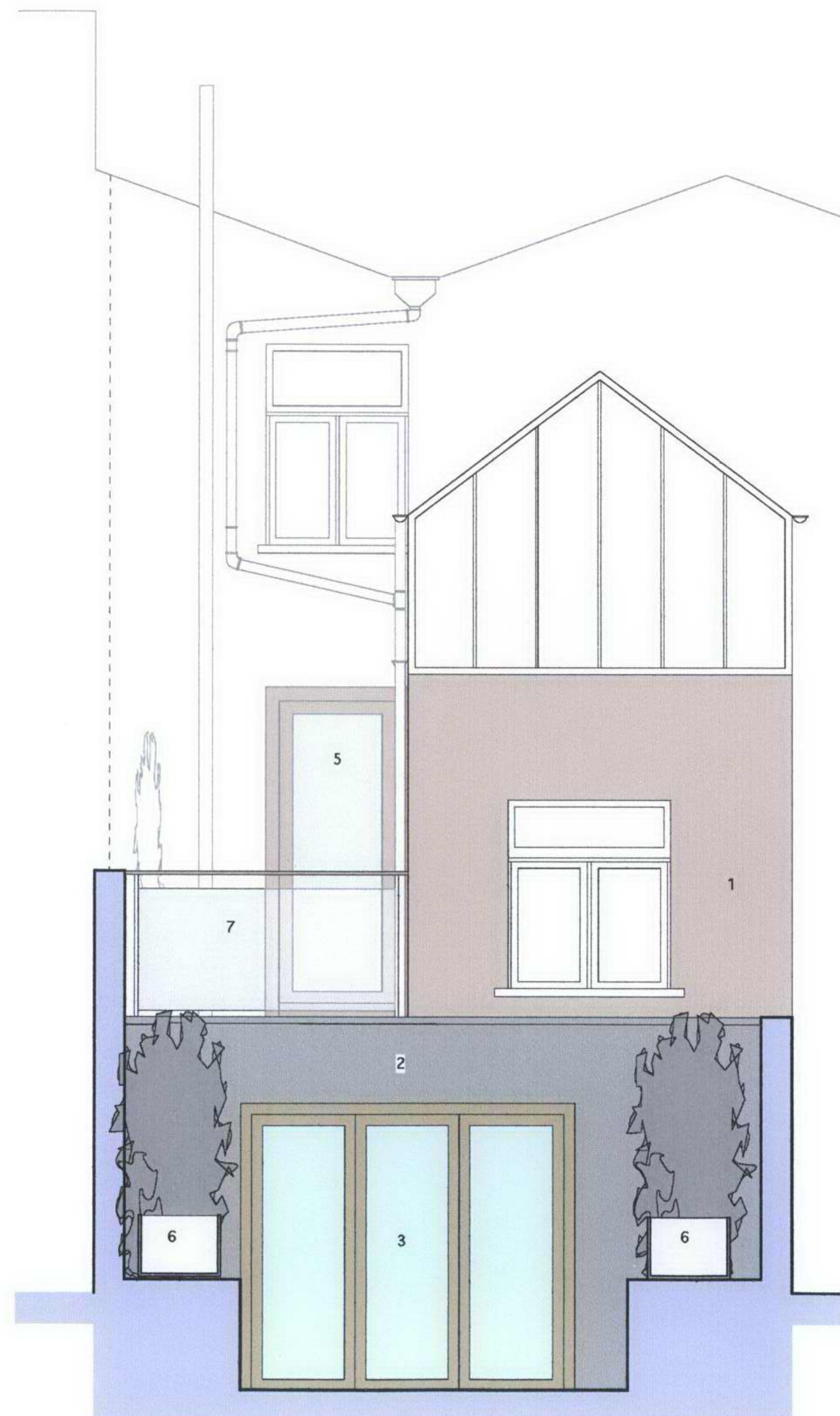
ARCHITECTS

PLANNING

© Knott Architects
98B Tollington Park
London N4 3RB
tel: (020) 72638844
fax: (020) 72634700
mail@knottarchitects.co.uk

Do not scale from this drawing
Use figured dimensions

Revisions
-A - 08.05.07
Brought forward glass
balustrade on terrace.



- 1 Existing brickwork
- 2 Render
- 3 Folding-sliding doors
- 4 Glass and steel railing
- 5 Timber glazed door
- 6 Planting trough
- 7 Glazed balustrade

Rear Elevation
As Proposed

KNOTT

29 Inkerman Road

Rear Elevation
As Proposed

Scale 1:50

Date: April 07

226.053 Rev - A

ARCHITECTS