

**Copyright**  
This drawing is copyright and may not be altered, reproduced or used other than for the Contract Works for which it is issued without the written permission of Foreman Roberts.

**Status of drawing**  
The purpose of this drawing when issued as a Tender Drawing is to enable tenders to interpret correctly the design and to submit competitive tenders for the works.  
A Tender Drawing whether original or amended shall not be used as an installation Drawing except under the terms contained in the conditions of Tender.

**Warning**  
Do not scale this drawing. Verify all dimensions and structural details on site. If in doubt, ask before acting.

**Related documents**  
This drawing to be used in conjunction with the appropriate Specification(s).

**Checking**  
This drawing has been generated using a Computer Aided Draughting system. As the system generates a new drawing at each revision, only the latest revision will have been initiated as checked.

Rev.	Date	Designed	CAD	Checked
A	15/02/07	IH	IH	JD
B	26/02/07	IH	IH	RP
C	31/05/07	IH	IH	RP

Status/Amendments

- LEGEND**
- L1 - REPLACEMENT ALUMINIUM HANDRAIL 80W T5 LAMPS
- L2 - 100W TUNGSTEN HALOGEN SUBMERSIBLE UPLIGHTERS SET WITHIN CONCRETE SURROUND
- L3 - 70W CDMT BURIED UPLIGHTER SET WITHIN PLANTER
- L4 - T5 LAMP COMBINED LIGHT BOX TO EXISTING CANOPY
- L5 - 35W CDMT HIGH LEVEL COLUMN DOWN LIGHTERS
- L6 - 42W PL NARROW ANGLE DOWN LIGHTERS BELOW LANDING.
- L7 - 70W CDMT SOFFIT MOUNTED GENERAL DOWN LIGHTERS
- L8 - DELETED
- L9 - FREE STANDING ETCHED GLASS WAYFINDING PANEL
- L10 - LINEAR WHITE LED LUMINAIRE LOCATED IN STRUCTURAL RECESS
- L11 - LINEAR WHITE LED LUMINAIRE LOCATED UNDER STRUCTURAL OVERHANG
- L12 - IP 54 LINEAR FLUORESCENT LUMINAIRE ON COLUMN TOP

- NOTES**
1. THE CONTRACTOR SHALL INSTALL AN IP65 RATED JUNCTION BOX TO REPLACE EXISTING PROJECTOR LIGHT. CABLES FROM POOL LUMINAIRES SHALL BE TERMINATED IN JUNCTION BOX AND SHALL BE FED USING EXISTING CIRCUIT FEED FRO PROJECTOR LIGHT.
2. REPLACEMENT HANDRAIL SHALL BE FED USING EXISTING HANDRAIL CIRCUIT CABLE. FEED TO NEW HANDRAIL SHALL BE RUN INTERNAL TO ONE OF THE SUPPORT POSTS. THE CONTRACTOR SHALL ALLOW FOR DIAMOND DRILLING STRUCTURE TO ALLOW THE CABLE TO BE CONCEALED.
3. LIGHTING CIRCUITS UNDER BRIDGE TO BE FED FROM DISTRIBUTION BOARD LOCATED IN THE SECURITY OFFICE AT MEZZANINE LEVEL. CIRCUITS ARE TO BE CONTACTOR SWITCHED AND CONTROLLED BY A SOLAR DIAL TIME CLOCK CIRCUITS ARE TO BE WIRED IN MCC CABLE AND PAINTED A SUITABLE COLOUR TO CONCEAL THEM AGAINST THE SOFFIT
4. EXISTING GROUND UPLIGHTERS TO BE REMOVED AND PAVING SLAB REPLACED/REPAIRED TO ARCHITECTS DETAIL
5. ILLUMINATED WAYFINDING PANELS TO BE FED FROM EXISTING LIGHTING CIRCUIT IN BURRIED JUNCTION BOX. THE CONTRACTOR SHALL LOCATE BOX AND TEST EXISTING CIRCUIT CABLE. THE BOX SHALL BE REPLACED WITH A NEW IP 65 RATED JUNCTION BOX

Project Title  
Centre Point

Drawing Title  
Electrical Services  
External Lighting  
Low Level

RECEIVED  
14 JUN 2007

Date Feb 2007	Drawing No. E-01
Drawn IH	Project No. L10655
Checked JD	Revision C
File-reference	Paper size/Scale A1 1:50

**FOREMAN**  
roberts

Building Services Consultants  
London, Oxford, Manchester, Isle of Man  
www.foremanroberts.com

9 Kings Head Yard, London, SE1 1NA Tel: +44 (0) 20 7089 8900 Fax: +44 (0) 20 7089 8910

FOR TENDER

**Copyright**  
This drawing is copyright and may not be altered, reproduced or used other than for the Contract Works for which it is issued without the written permission of Foreman Roberts.

**Status of drawing**  
The purpose of this drawing when issued as a Tender Drawing is to enable tenders to interpret correctly the design and to submit competitive tenders for the works.  
A Tender Drawing whether original or amended shall not be used as an installation Drawing except under the terms contained in the conditions of Tender.

**Warning**  
Do not scale this drawing. Verify all dimensions and structural details on site. If in doubt, ask before acting.

**Related documents**  
This drawing to be read in conjunction with the appropriate Specification(s).

**Checking**  
This drawing has been generated using a Computer Aided Drafting system. As the system generates a new drawing at each revision, only the latest revision will have been initiated as checked.

Rev.	Date	Designed	CAD	Checked
A	31.05.07	IH	IH	RP

Status/Amendments

Project Title

Centre Point

Drawing Title

Electrical Services  
External Lighting  
Mezzanine Level

RECEIVED  
14 JUN 2007

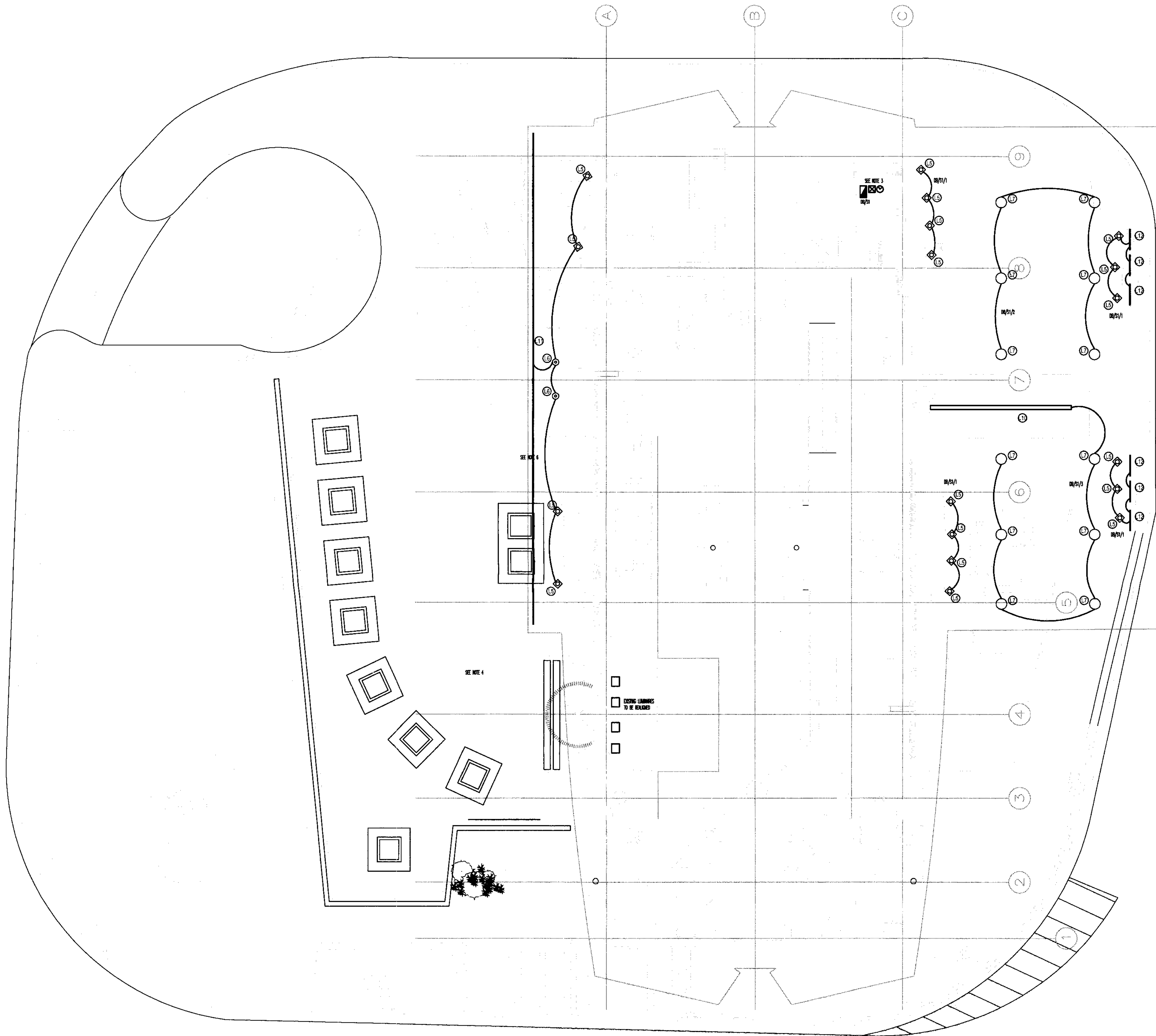
Date May 2007	Drawing No. E-01
Drawn IH	Project No. L10655
Checked RP	Revision A
File-reference	Paper size/Scale A1 1:50

**FOREMAN**  
**roberts**

Building Services Consultants  
London, Oxford, Manchester, Isle of Man  
www.foremanroberts.com

9 Kings Head Yard,  
London, SE1 1NA  
Tel: +44 (0) 20 7088 8900  
Fax: +44 (0) 20 7089 9810

FOR INFORMATION



**LEGEND**

- L1 - REPLACEMENT ALUMINIUM HANDRAIL 80W T5 LAMPS
- L2 - 100W TUNGSTEN HALOGEN SUBMERSIBLE UPLIGHTERS SET WITHIN CONCRETE SURROUND
- L3 - 70W CDMT BURIED UPLIGHTER SET WITHIN PLANTER
- L4 - T5 LAMP COMBINED LIGHT BOX TO EXISTING CANOPY
- L5 - 35W CDMT HIGH LEVEL COLUMN DOWN LIGHTERS
- L6 - 42W PL NARROW ANGLE DOWN LIGHTERS BELOW LANDING
- L7 - 70W CDMT SOFFIT MOUNTED GENERAL DOWN LIGHTERS
- L8 - DELETED
- L9 - FREE STANDING ETCHED GLASS WAYFINDING PANEL
- L10 - LINEAR WHITE LED LUMINAIRE LOCATED IN STRUCTURAL RECESS
- L11 - LINEAR WHITE LED LUMINAIRE LOCATED UNDER STRUCTURAL OVERHANG
- L12 - IP 54 LINEAR FLUORESCENT LUMINAIRE ON COLUMN TOP

**NOTES**

1. THE CONTRACTOR SHALL INSTALL AN IP65 RATED JUNCTION BOX TO REPLACE EXISTING PROJECTOR LIGHT. CABLES FROM POOL LUMINAIRES SHALL BE TERMINATED IN JUNCTION BOX AND SHALL BE FED USING EXISTING CIRCUIT FEED FRO PROJECTOR LIGHT.
2. REPLACEMENT HANDRAIL SHALL BE FED USING EXISTING HANDRAIL CIRCUIT CABLE. FEED TO NEW HANDRAIL SHALL BE RUN INTERNAL TO ONE OF THE SUPORT POSTS. THE CONTRACTOR SHALL ALLOW FOR DIAMOND DRILLING STRUCTURE TO ALLOW THE CABLE TO BE CONCEALED.
3. LIGHTING CIRCUITS UNDER BRIDGE TO BE FED FROM DISTRIBUTION BOARD LOCATED IN THE SECURITY OFFICE AT MEZZANINE LEVEL. CIRCUITS ARE TO BE CONTACTOR SWITCHED AND CONTROLLED BY A SOLAR DIAL TIME CLOCK CIRCUITS ARE TO BE WIRED IN MICC CABLE AND PAINTED A SUITABLE COLOUR TO CONCEAL THEM AGAINST THE SOFFIT
4. EXISTING GROUND UPLIGHTERS TO BE REMOVED AND PAVING SLAB REPLACED/REPAIRED TO ARCHITECTS DETAIL
5. ILLUMINATED WAYFINDING PANELS TO BE FED FROM EXISTING LIGHTING CIRCUIT IN BURRIED JUNCTION BOX. THE CONTRACTOR SHALL LOCATE BOX AND TEST EXISTING CIRCUIT CABLE. THE BOX SHALL BE REPLACED WITH A NEW IP 65 RATED JUNCTION BOX
6. CIRCUITS FEEDING THE PLANTER AND CANOPY LIGHTING ARE TO BE TAKEN FROM THE EXISTING DISTRIBUTION BOARD LOCATED IN THE BASEMENT MAINTANANCE ROOM. THE CABLES SHALL FOLLOW THE EXISTING POOL LIGHTING AND PUMP CABLES THROUGH THE BASEMENT WALL AND ACROSS THE VENTILATION SHAFT. THEY SHALL THEN RUN THROUGH THE PUMP HOUSING UPSTAND. SEE DRAWING I10655E/02 FOR CABLE ENTRY DETAILS TO THE UPSTAND.