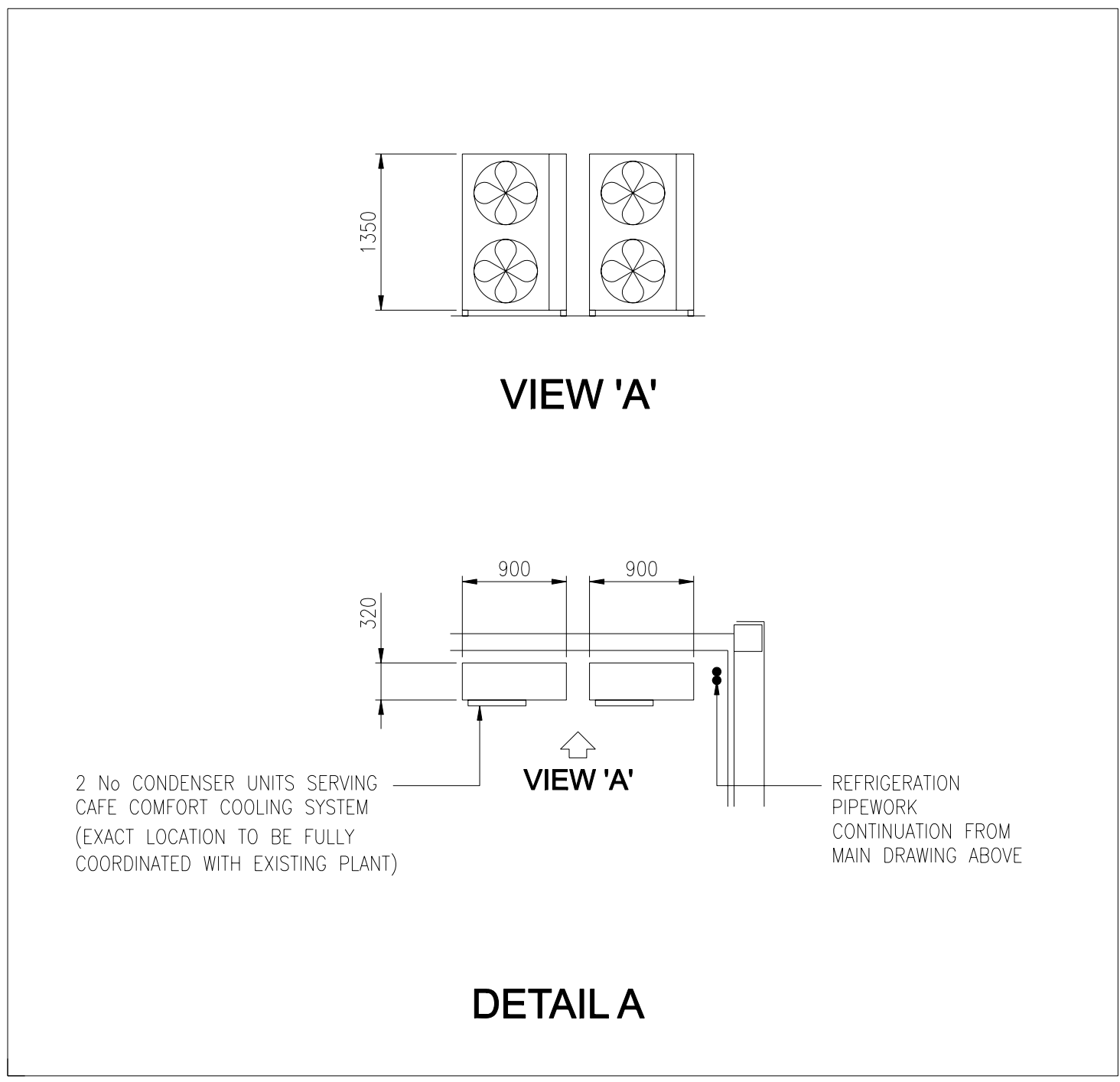
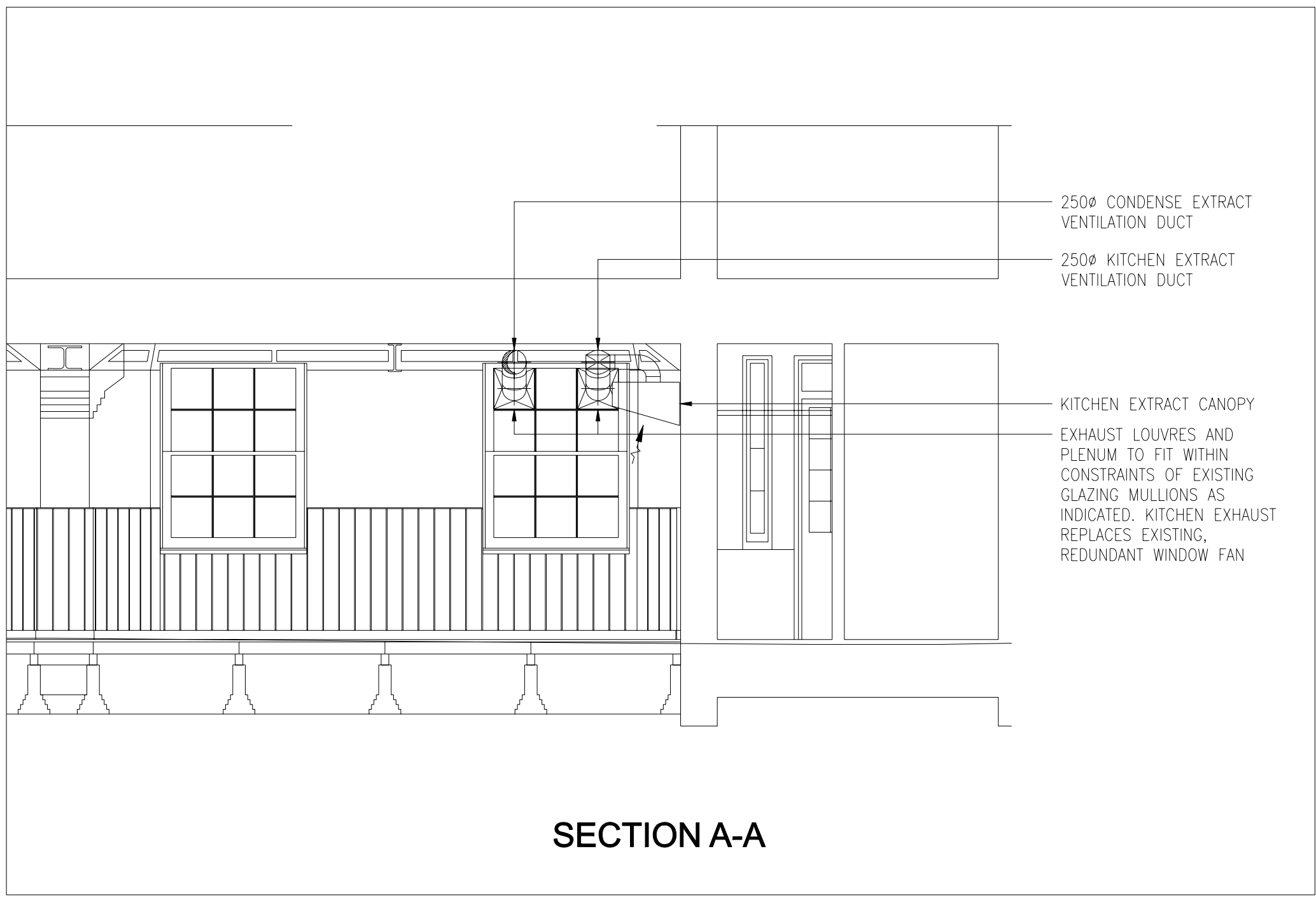


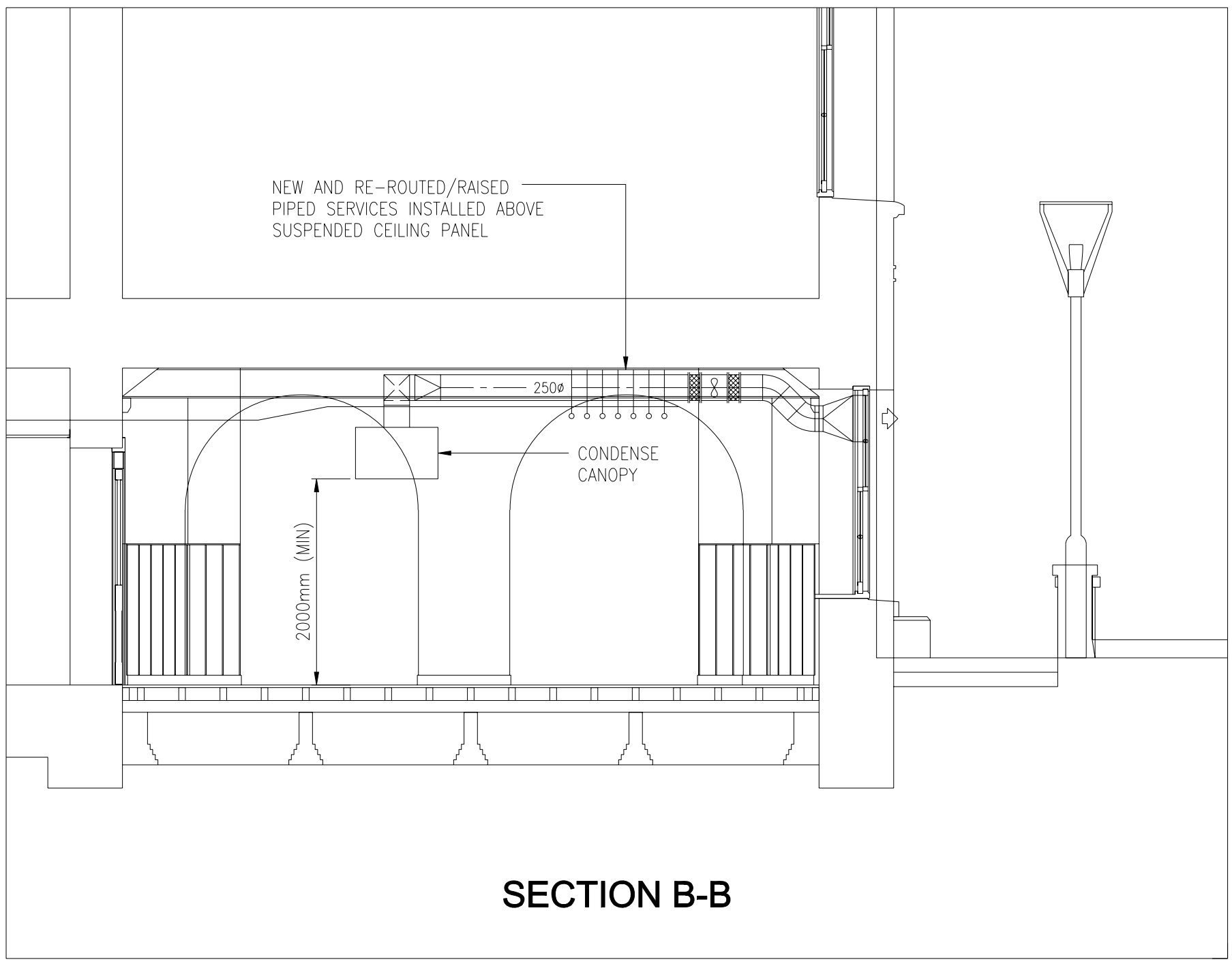
PLAN



DETAIL A



SECTION A-A



SECTION B-B

The Richard Stephens Partnership Limited own the copyright to the building services engineering content of this drawing which is not to be used copied published or reproduced in whole or in part in any form without written consent.

notes

- DO NOT SCALE FROM THIS DRAWING
- THIS DRAWING TO BE READ IN CONJUNCTION WITH RELEVANT ARCHITECTURAL AND STRUCTURAL DRAWINGS, OTHER SERVICES DRAWINGS AND SPECIFICATIONS
- HEATING F&R PIPEWORK BRANCHES SERVING PERIMETER RADIATORS TO BE CONCEALED WITHIN PERIMETER PANNELLING

A	08.06.07	ISSUED FOR PLANNING AND LISTED BUILDING CONSENT	DMP/AMP
rev	date	description	dm chk

The Richard Stephens Partnership Limited
Consulting Engineers

MIII Court
MIII Hill
Edenbridge
Kent TN8 5DB

Tel: 01732 782300
Fax: 01732 782340
E-mail: mail@theRSP.co.uk
Website: www.theRSP.co.uk

RSP

client

UNIVERSITY COLLEGE LONDON
ESTATES AND FACILITIES DIVISION
GOWER STREET LONDON WC1E 6BT

architect

MacCORMAC JAMIESON PRICHARD
ARCHITECTS

project

UNIVERSITY COLLEGE LONDON
PRINT ROOM CAFE
SOUTH WING BUILDING

title

BASEMENT
MECHANICAL SERVICES

date	JUNE 2007	scale	1:50 @ A1
designed	AMP	cad	JVP/RLP
checked	AMP	approved	

FOR PLANNING AND LISTED BUILDING CONSENT

drawing no.	856MSK01	rev	A
-------------	----------	-----	---