

Proposed Section EE through South Quadrangle Entrance

Notes:

1. Self-finished metal cladding panels, in graphite grey
2. Frameless integrated double glazed units: 16mm toughened safety glass with solar coating on inside face, cavity and laminated safety glass to inner skin. Perimeter priming on interior side of pane, concealing integrated aluminium frame.
3. Frameless integrated double glazed single-action door, with power assisted floor spring.
4. Metal gutter, in colour to match item 1.
5. 200x100 RHS portal frame, with sprayed finish (colour tbc). All welds to be dressed smooth and fixings to be countersunk.
6. Plywood panels (internal finish tbc)
7. Low timber bench platform, with accessible panel to conceal existing raised access cover to communication cables.
8. Framed matwell (heavy duty colr brush and aluminium)
9. Spray finish steel structure, all welds to be dressed smooth and fixings to be countersunk.
10. Spray finish steel member, colour to match item 5 above. All welds to be dressed smooth and fixings countersunk
11. Suspended oak veneered open ribbed acoustic ceiling panels. Light fittings are installed between the open ribs and set level with the underside of the ceiling panels.
12. Remedial works to existing English bond brick face, now enclosed by glazed entrance box.
13. Existing window to be refurbished and clear glass panels replaced with translucent glass panels to conceal communication and data cables behind.
14. Existing window to be refurbished, and redundant high level window fan replaced with clear glass panels.
15. Existing timber faced lintel.
16. New IT riser enclosure, with accessible wall panels.
17. Stainless steel handrail (design subject to development)
18. Ceramic tiling to new steps into cafe, to negotiate
19. Stainless steel grating to perimeter drainage channels to Structural and Mechanical Services engineers details.
20. 450mm deep mass concrete footing to Structural Engineer's details.
21. Please note there are existing mechanical and electrical services located below ground. The exact locations of service runs and access covers need to be determined prior to works on site.

Please note the internal existing and proposed floor levels shown are indicative, and subject to survey prior to start of works.



GENERAL NOTES

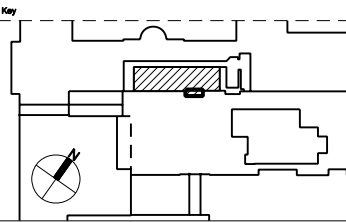
DO NOT SCALE DRAWINGS. USE FIGURED DIMENSIONS ONLY.
ALL DIMENSIONS TO BE CHECKED ON SITE DISCREPANCIES TO BE REPORTED IMMEDIATELY TO THE ARCHITECT
FOR STRUCTURAL DIMENSIONS AND SETTING OUT SEE STRUCTURAL ENGINEERS DRAWINGS
ALL INFORMATION SUBJECT TO STATUTORY APPROVALS BEING OBTAINED
THIS DRAWING IS TO BE READ IN CONJUNCTION WITH THE RELEVANT STRUCTURAL AND MECHANICAL SERVICES DRAWINGS, METHOD STATEMENTS AND SPECIFICATIONS.

SPECIFIC NOTES:-

Rev	Date	Description	By	Chk	App
-	08/08/2007	For Planning and Listed Building Consent Applications	JT	JT	LP

MJP
ARCHITECTS

9 HENEAGE STREET, SPITALFIELDS, LONDON, E1 6LJ
Tel. 020 7377 9282 Fax. 020 7247 7854
email mjp@mjparchitects.co.uk web www.mjparchitects.co.uk
MacComae Jamieson Pritchard Ltd Registered in England No: 03163770



Client
University College London

Project
**Print Room Cafe,
South Wing Building**

Title
**South Quad Entrance to Cafe -
Proposed Section EE**

Job No.	0701	Scale	1:20 @ A3	Date	June 2007
Issue Status	For Planning & Listed Building Consent				

Project No.	Disc	Zone	Dwg Set	Serial	Rev
0701	A	-	21	202	-