

# APPENDIX C

23<sup>RD</sup> FEBRUARY, 2006

6<sup>th</sup> MARCH, 2006

23<sup>RD</sup> MARCH, 2006

# APPENDIX C

PHOTOGRAPHS 3<sup>RD</sup> FEBRUARY, 2006

6323/JSJ/VME

28 February 2006 – Rev. A

HAMPSTEAD SYNAGOGUESCHEDULE OF PHOTOGRAPHSJSJ INSPECTION ON THURSDAY 23<sup>RD</sup> FEBRUARY, 2006

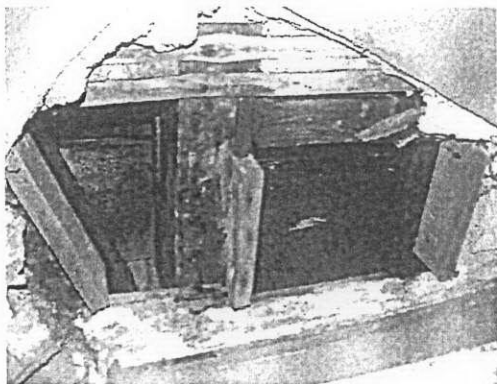
P0022	TP1 soffit of valley gutter boards in fair order.
P0023	TP1 column is cast iron, decoration is plasterwork.
P0024	As above.
P0025	View into gallery floor, all dry and in good order.
P0026	As above, but boarding damaged by rainwater.
P0027	TP3 view into roof space.
P0028	As above, all in good order.
P0029	As above.
P0030	TP3 view of gutter boarding, in fair order.
P0031	As above.
P0032	Likewise, distressed plaster to false beam casing.
P0033	Roof R8. Roofs very poor.
P0034	Roof R7. Slates loose and disintegrating.
P0035	North wall of building.
P0036	Junction between original birckwork on right, extension on left.
P0037	Roof R6.
P0038	Roof R6.
P0039	Roof R14. Vegetation.
P0040	Roof R5. It is disintegrating, boarding visible.
P0041	Roof R5. RWP original cast iron in poor condition.
P0042	Roof R14, coping removed, felting poor, ponding, rubbish.
P0043	Roof R13 mineral felt, rubbish, UPVC RWP.
P0044	Roof R13 as above.
P0045	TP4 view of boarded soffit to roof pitch.
P0046	As above.
P0047	Typical column head, beam casing is false, plaster falsework, but distressed at each column position.
P0048	TP3, steel beams on left seated on cast-iron column capitols.
P0049	As above.
P0050	TP5 steel beams beam supporting brickwork above.
P0051	TP5 as above.
P0052	TB5 original ceiling underlaid by 9mm plasterboard.
P0053	As above.
P0054	Beam to south of TP5 beam soffit coming adrift, plasterwork only.
P0055	TP1, beam casing on plasterwork and steel beam on column.
P0056	TP1 steel beam supporting balcony seated on cast iron column head. Void below plasterwork falsework only.
P0057	Plaster damage ceiling and wall over stair ST1.
P0058	Cracks in wall facing F1. Slight settlement of tower.

6323/JSJ/VME – Rev. A  
28 February 2006

P0059	As above.
P0060	Landing F9.
P0061	Cracks to window and ceiling above stair ST1.
P0062	Above door to gallery from F1.
P0063	Cracking to structural wall, roof F9. Slight settlement of tower.
P0064	Ceiling over stair ST2, cracking in ceiling.
P0065	Underside of gallery above F4. (Gallery S1).
P0066	Cracking above windows above stair ST2.
P0067	Wall facing stair ST2.
P0068	Cracking adjacent to door and distortion in frame to room G4.
P0069	Minor cracking over main entrance door at G2A.
P0070	Decayed flat roof over room G8 A, B, C
P0071	Passageway along north elevation between synagogue and shops.
P0072	Back wall outside stair ST1.
P0073	Back wall outside stair ST1.
P0074	Passageway on north side. Note intrusion of boiler flues.
P0075	Escape stair at F8 roofs completely decayed.
P0076	As above.
P0077	View from south to stair ST3.
P0078	View looking west along south wall.
P0079	Flat roofs outside ST3.
P0080	Stair to RST3 viewed from south.
P0081	Lightning conductor.
P0082	South view of stair ST3.
P0083	View of south elevation.
P0084	As above
P0085	View of stair ST3.
P0086	Typical hollowpot floor being demolished.
P0087	As above.
P0088	Room 3 previous boiler room.
P0089	Likewise.
P0090	Room B4 looking towards B3.
P0091	View of timber floor under main synagogue.
P0092	Not used.
P0093	Not used.
P0094	Entrance hallway floor construction unknown.
P0095	TP6 beam supporting gallery seated on column flange held in place with steel strap.
P0096	As above.
P0097	As above.
P0098	As above.
P0099	South east corner of tower, roof space, decayed gutter board.
P0100	South west corner of roof space.
P0101	View towards top of tower.
P0102	View towards door on north face.
P0103	Stonework; presumed redundant parapet.

6323/JSJ/VME – Rev. A  
28 February 2006

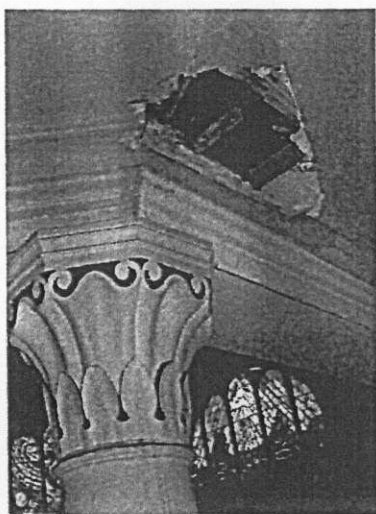
P0104	East parapet on verge of collapse.
P0105	South east tower capping.
P0106	South east tower capping.
P0107	Gutter on west of tower.
P0108	Gutter on north of tower.
P0109	Roof R15.
P0110	Roof R15 and R16 below.
P0111	Roof R11.
P0112	South gutter of tower, parapet copings poor.
P0113	North west turret and flagpole.
P0114	Flagpole brackets have split brickwork.
P0115	View internal towards top of north west turret.
P0116	Roof R15 parapets disturbed.
P0117	South parapet to tower.
P0118	Roof R12 – note redundant chimney stack from boiler room B3.
P0119	Roof R12 and R9 – lightning conductor loose.
P0120	As above. Note window cill – decayed.
P0121	Roof R15.
P0122	As above.
P0123	Interior of G9 – general view.
P0124	Interior of G9.
P0125	R13 from below, ceiling over room G1.
P0126	As above.



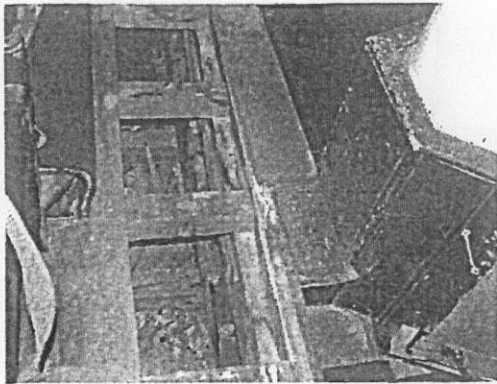
DSCF0022



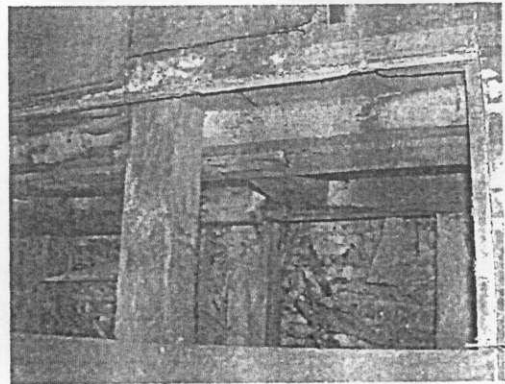
DSCF0023



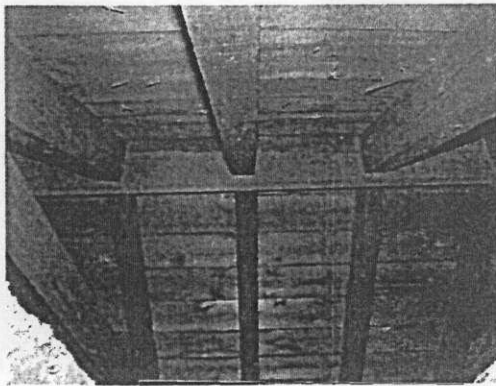
DSCF0024



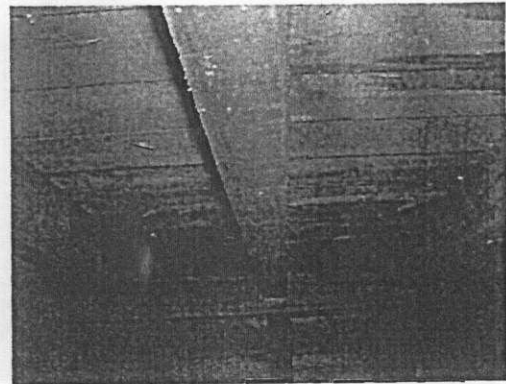
DSCF0025



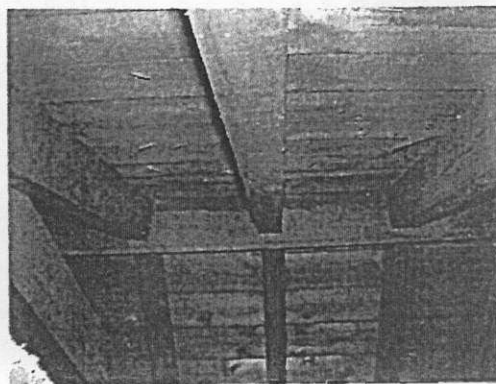
DSCF0026



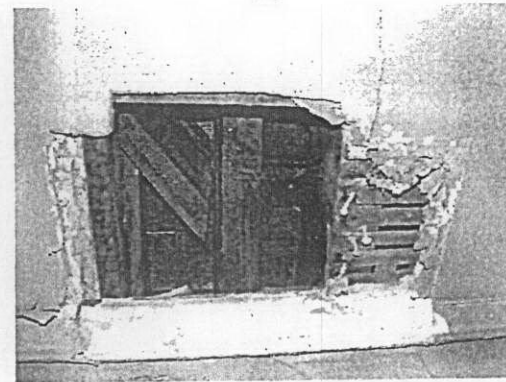
DSCF0027



DSCF0028



DSCF0029



DSCF0030





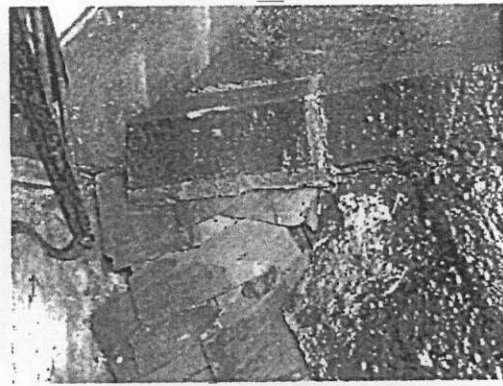
DSCF0037



DSCF0038



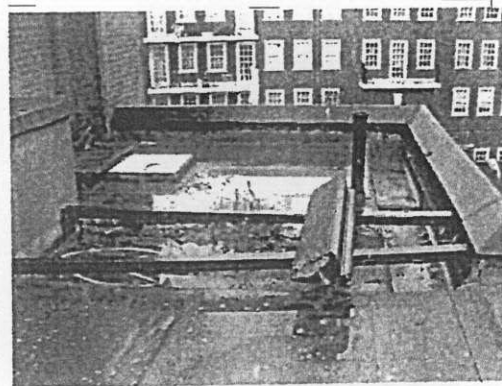
DSCF0039



DSCF0040



DSCF0041

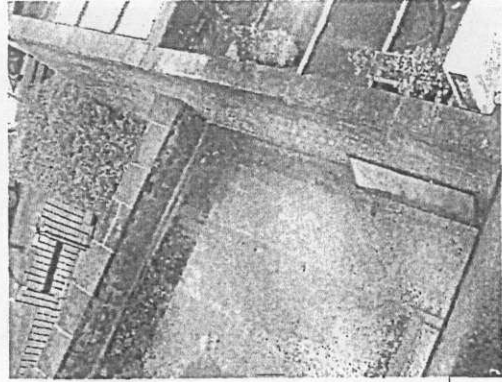


DSCF0042

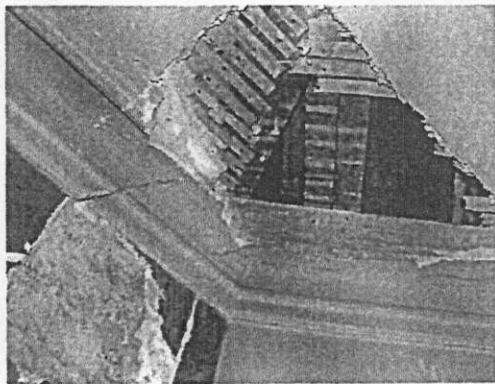




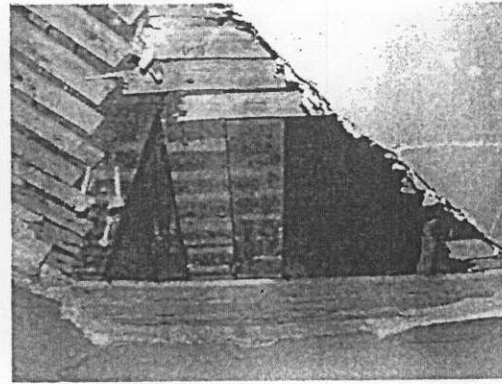
DSCF0043



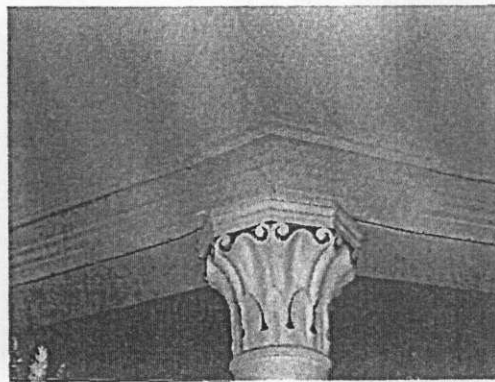
DSCF0044



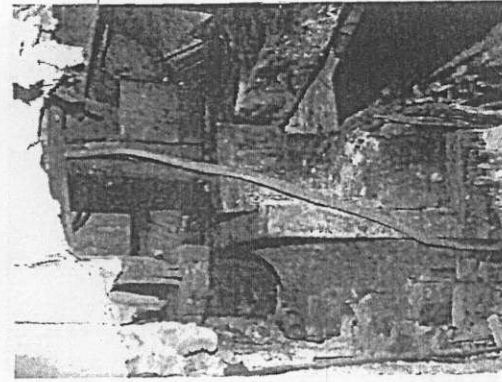
DSCF0045



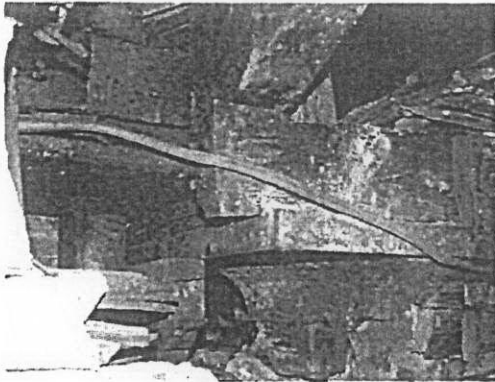
DSCF0046



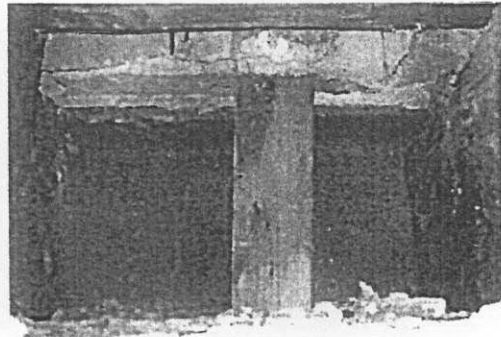
DSCF0047



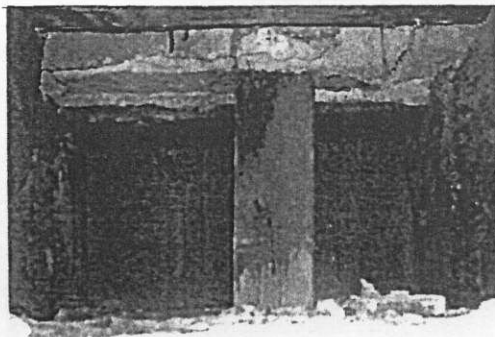
DSCF0048



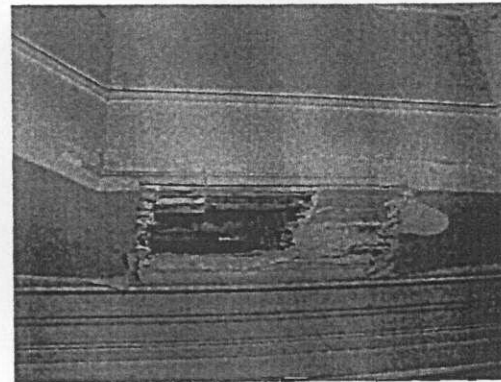
DSCF0049



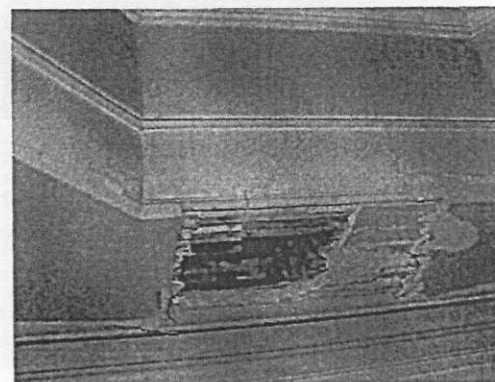
DSCF0050



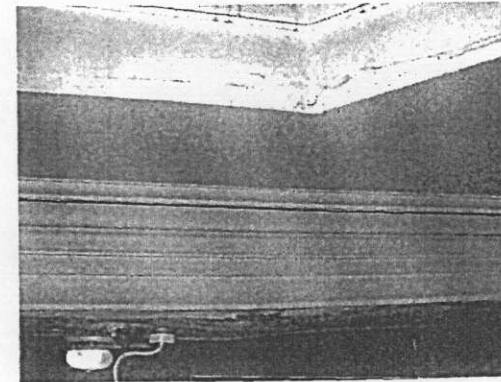
DSCF0051



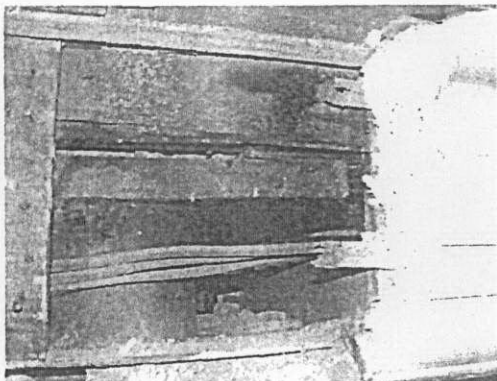
DSCF0052



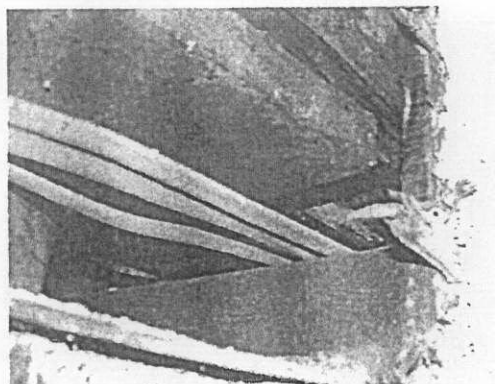
DSCF0053



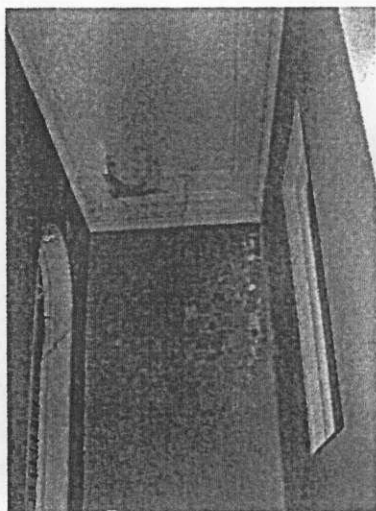
DSCF0054



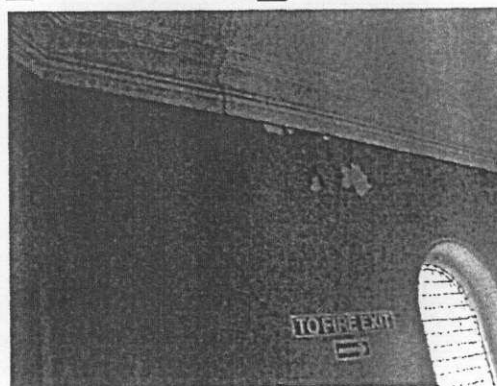
DSCF0055



DSCF0056



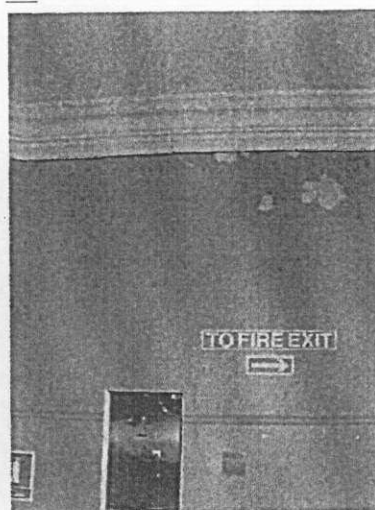
DSCF0057



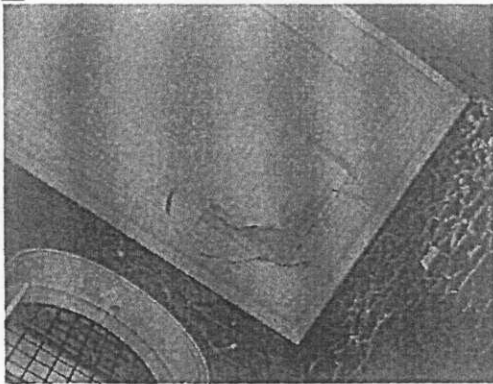
DSCF0058



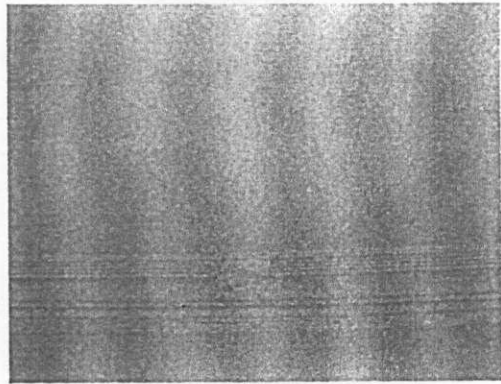
DSCF0059



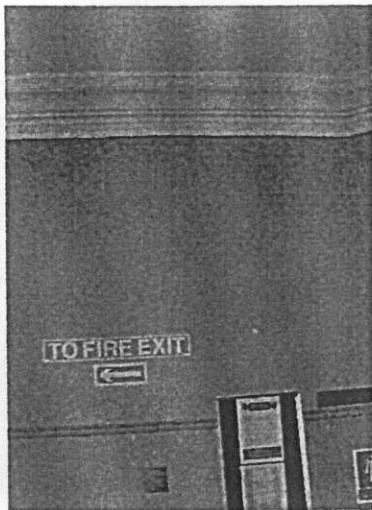
DSCF0060



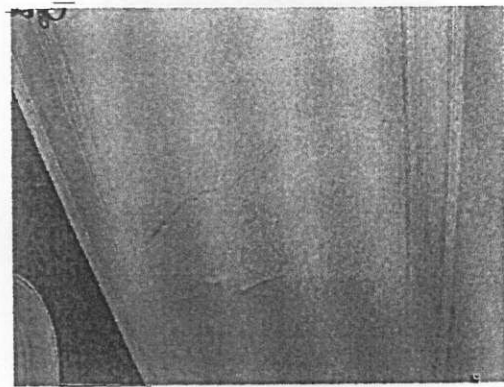
DSCF0061



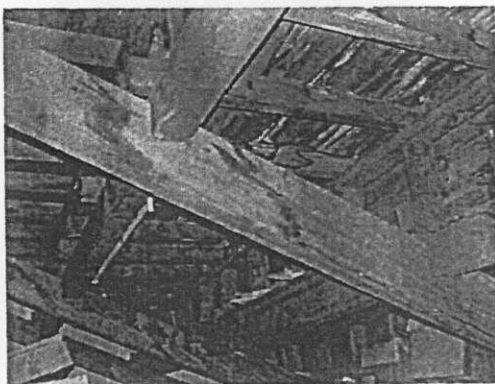
DSCF0062



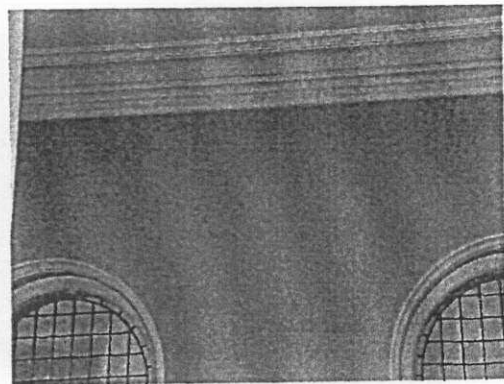
DSCF0063



DSCF0064



DSCF0065

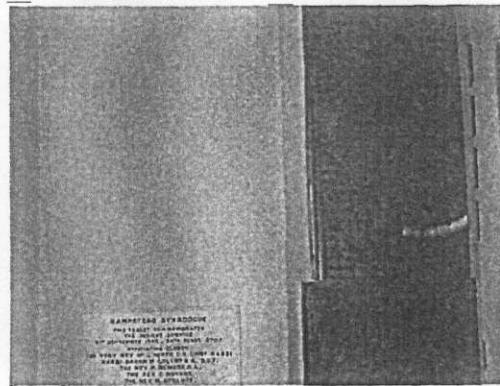


DSCF0066

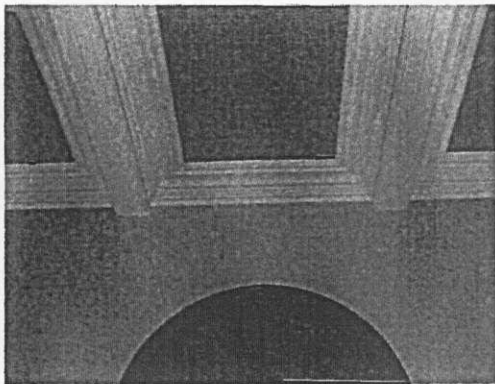




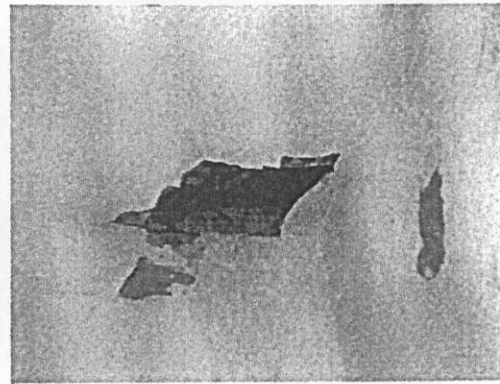
DSCF0067



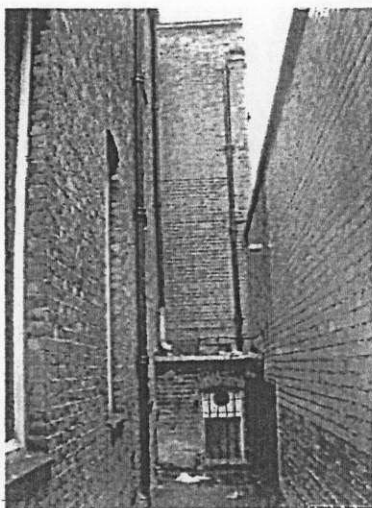
DSCF0068



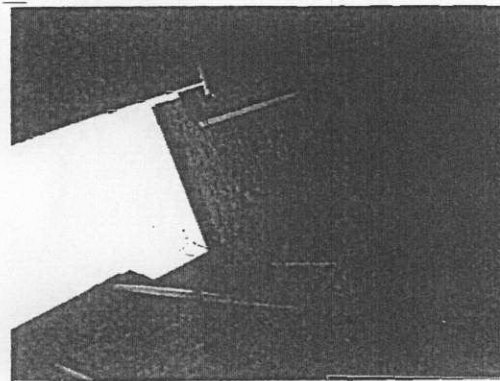
DSCF0069



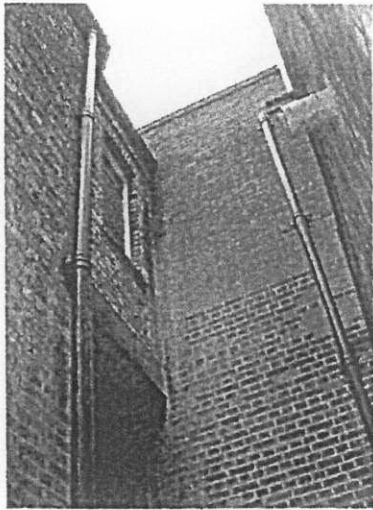
DSCF0070



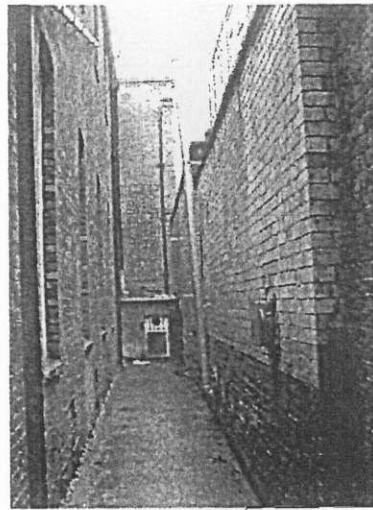
DSCF0071



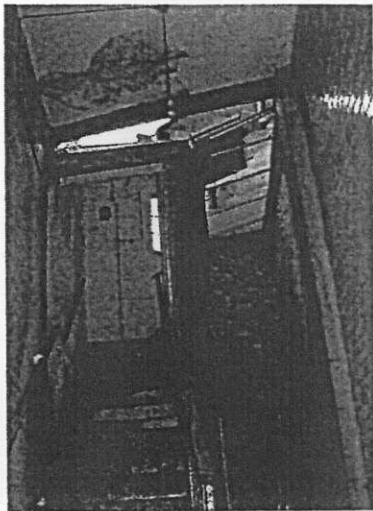
DSCF0072



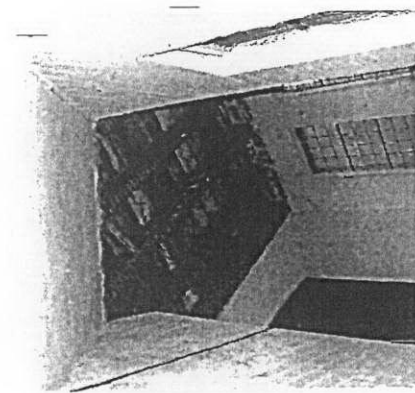
DSCF0073



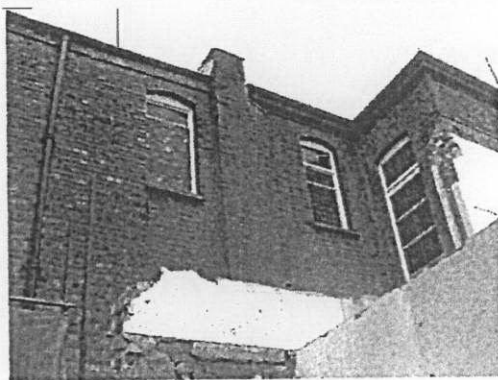
DSCF0074



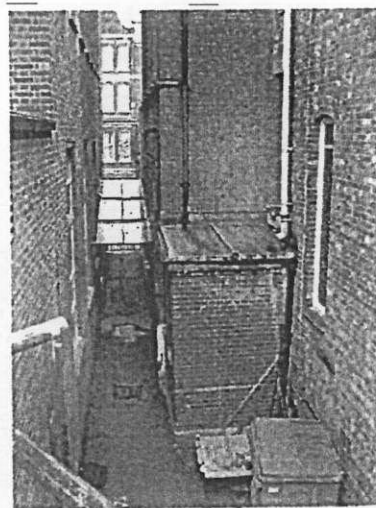
DSCF0075



DSCF0076



DSCF0077



DSCF0078



DSCF0079



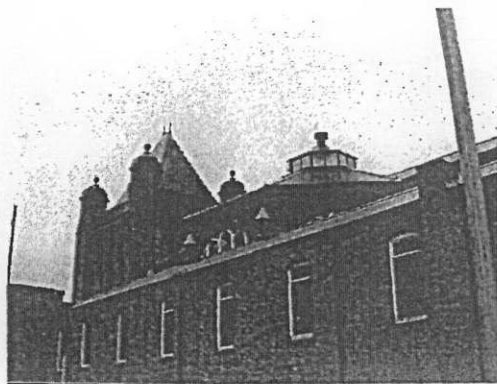
DSCF0080



DSCF0081



DSCF0082

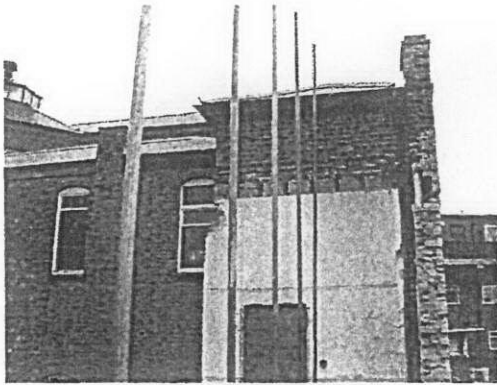


DSCF0083



DSCF0084





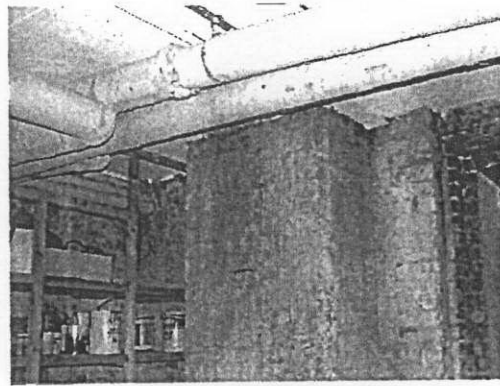
DSCF0085



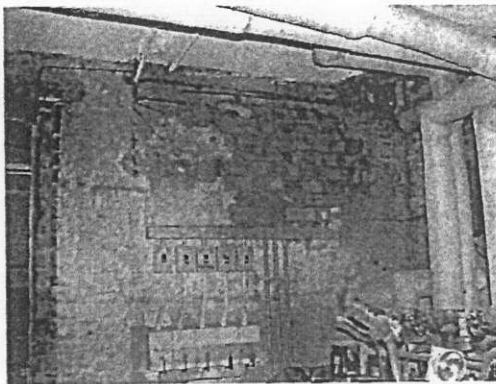
DSCF0086



DSCF0087



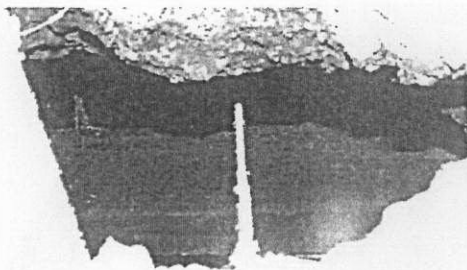
DSCF0088



DSCF0090



DSCF0091



DSCF0093



DSCF0094



DSCF0095



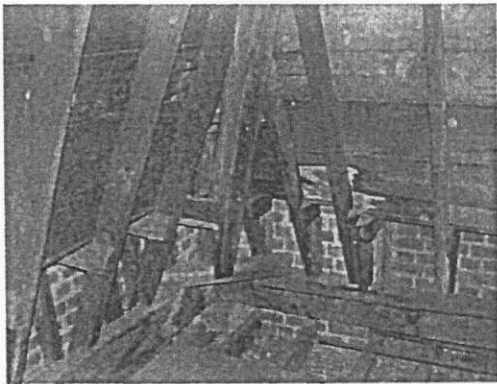
DSCF0096



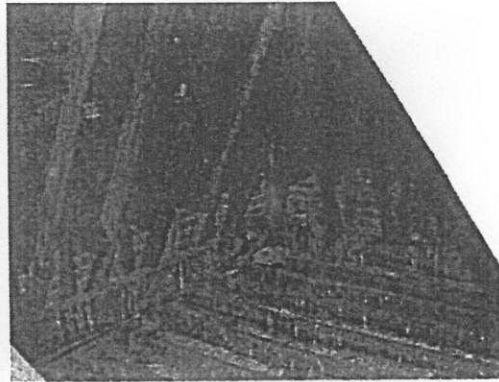
DSCF0097



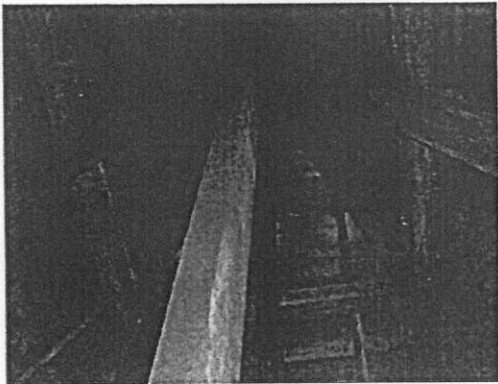
DSCF0098



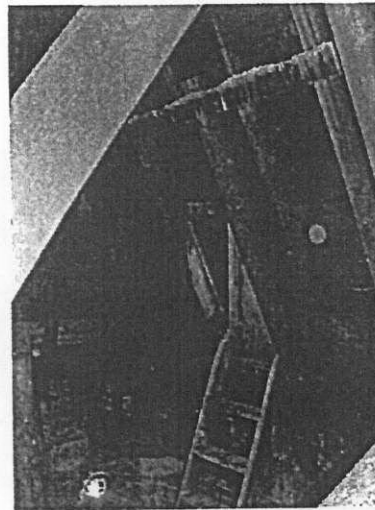
DSCF0099



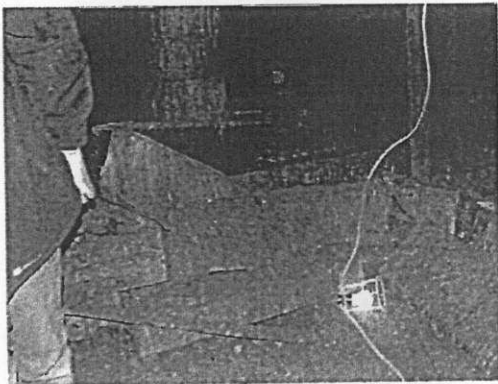
DSCF0100



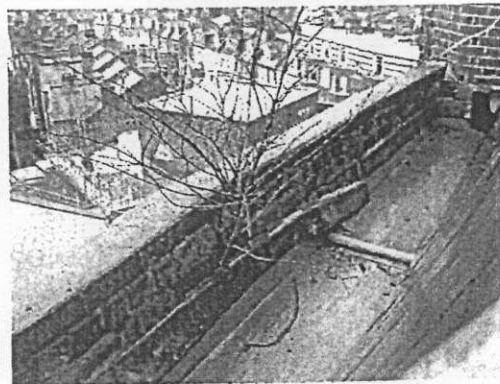
DSCF0101



DSCF0102



DSCF0103



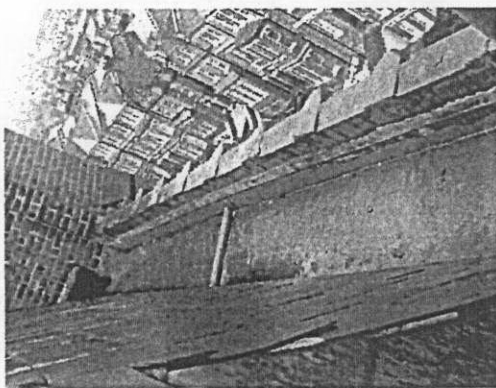
DSCF0104



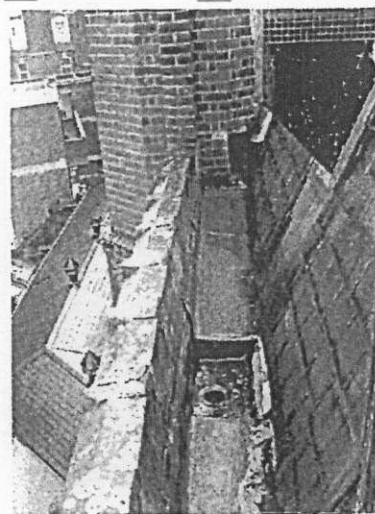
DSCF0105



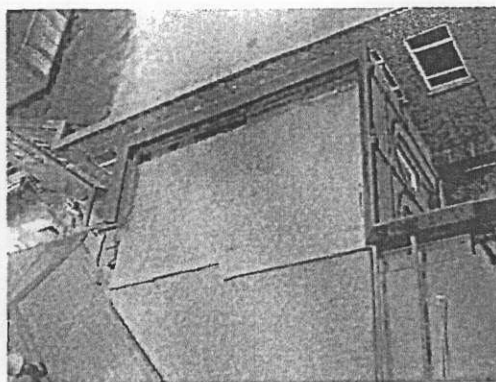
DSCF0106



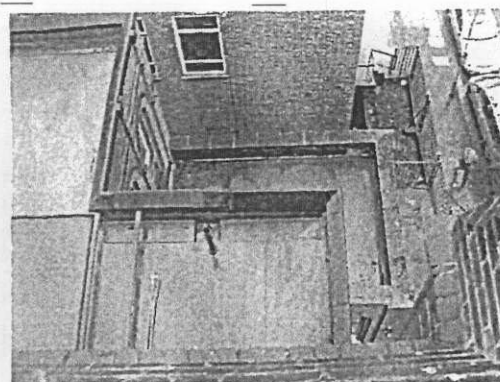
DSCF0107



DSCF0108

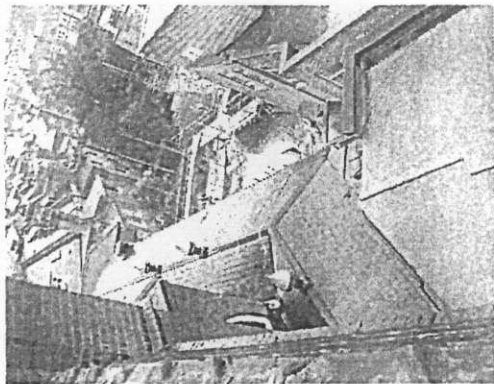


DSCF0109

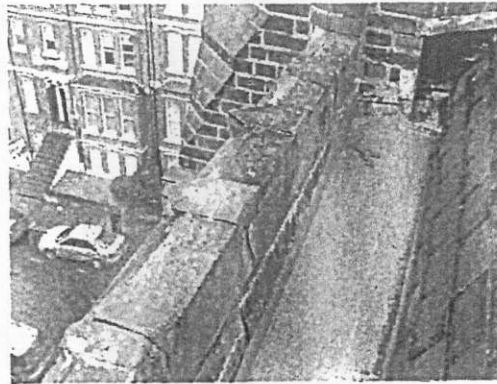


DSCF0110





DSCF0111



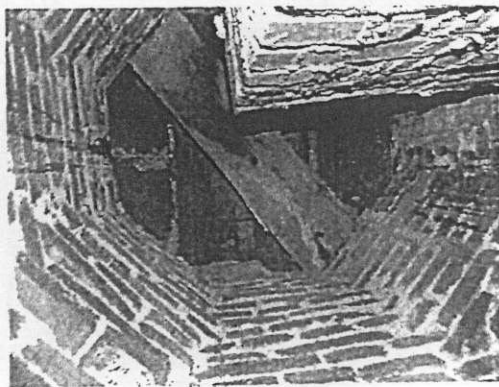
DSCF0112



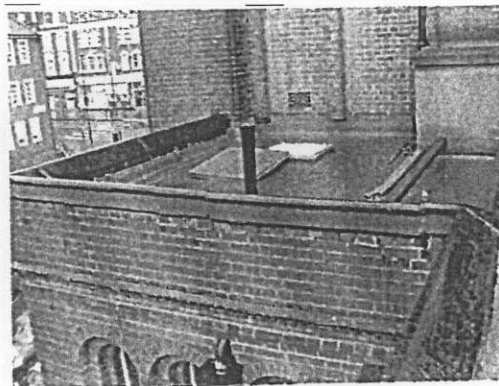
DSCF0113



DSCF0114



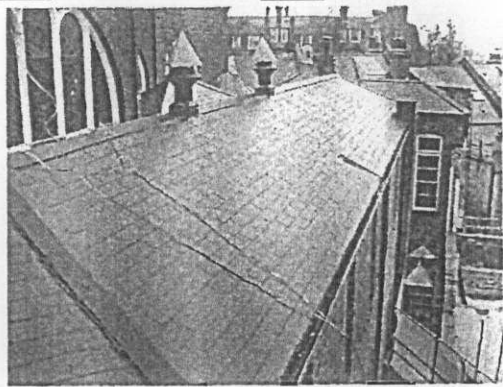
DSCF0115



DSCF0116



DSCF0117



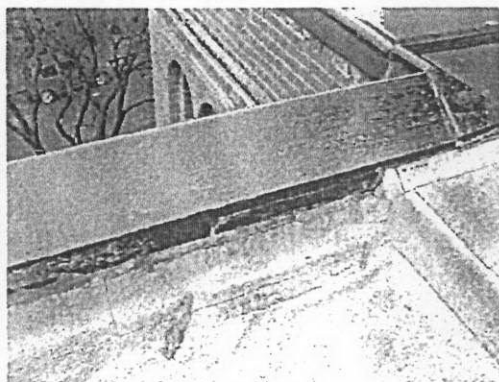
DSCF0118



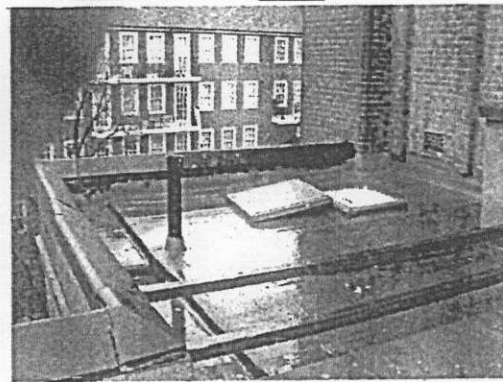
DSCF0119



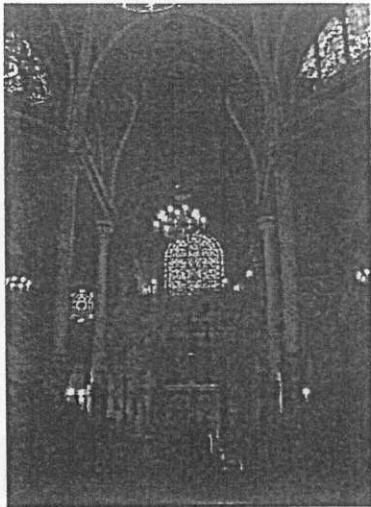
DSCF0120



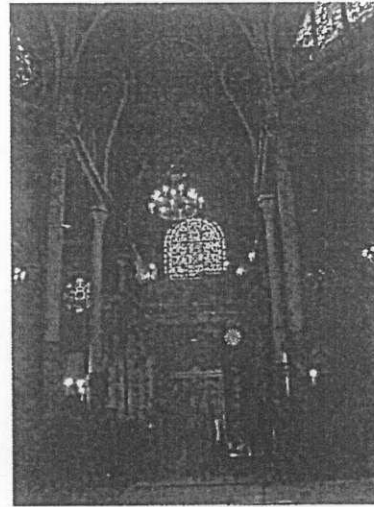
DSCF0121



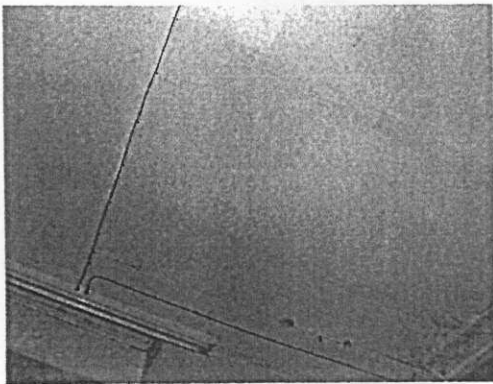
DSCF0122



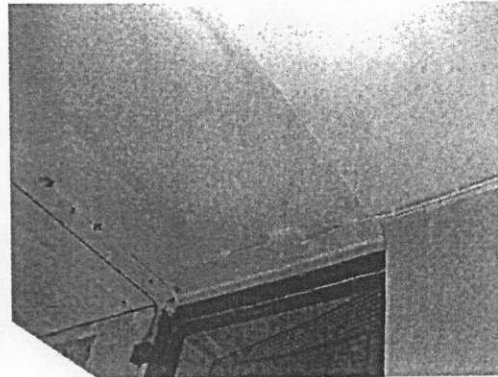
DSCF0123



DSCF0124



DSCF0125



DSCF0126



# APPENDIX C

PHOTOGRAPHS ~~6<sup>TH</sup>~~ MARCH, 2006

6323/JSJ/VME

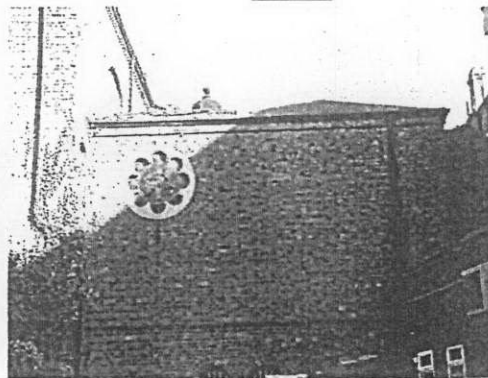
27 March 2006

HAMPSTEAD SYNAGOGUESCHEDULE OF PHOTOGRAPHSJSJ INSPECTION ON MONDAY 6<sup>TH</sup> MARCH, 2006

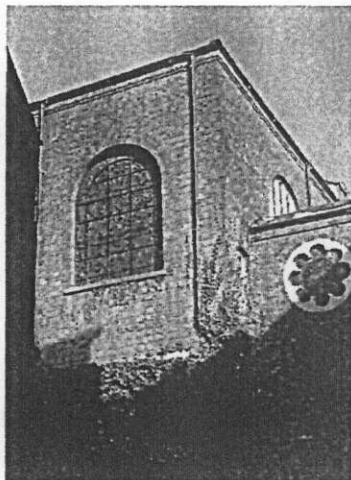
P201	View of east wall from Sandwell Crescent.
P202	View of east wall from Sandwell Crescent.
P203	View of east wall from Sandwell Crescent.
P204	Link on South east wall
P205	As above, but boarding damaged by rainwater.
P206	Gap in gutter at east wall – north corner.
P207	Leaking Rainwater pipe–outside fire escape–north east corner.
P208	Weathered brickwork – north face of tower.
P209	Weathered brickwork – north face of tower.
P210	Weathered brickwork – west face of tower.
P211	Weathered brickwork – west face of tower.
P212	Dry rot in doorframe – to room G1
P213	Displaced bricks room B2
P214	Floor over Room B1.
P215	Floor over Room B1.
P216	Gap to north of room B2.
P217	Infill brickwork to south of B2.
P218	Outside stair ST3.
P219	Outside Stair ST3.
P220	Cracks in marble casing.



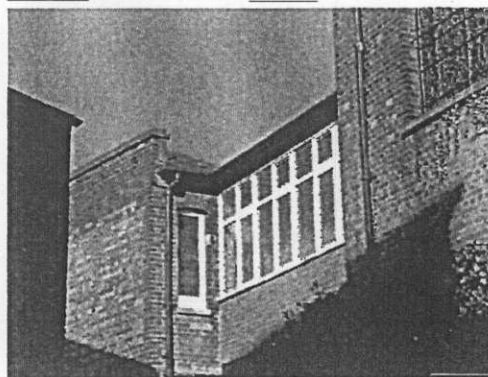
P201  
1280x960x24b jpeg



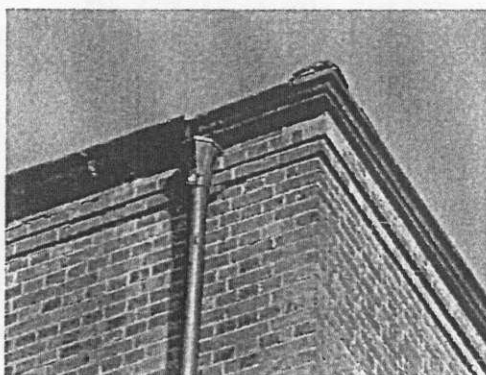
P202  
1280x960x24b jpeg



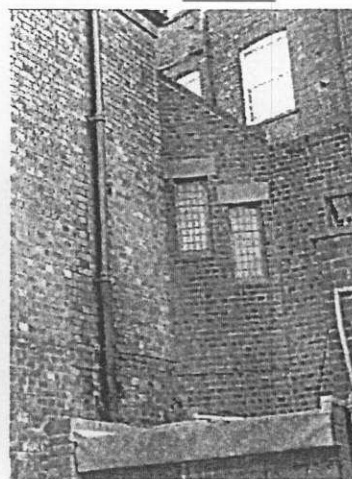
P203  
960x1280x24b jpeg



P204  
1280x960x24b jpeg



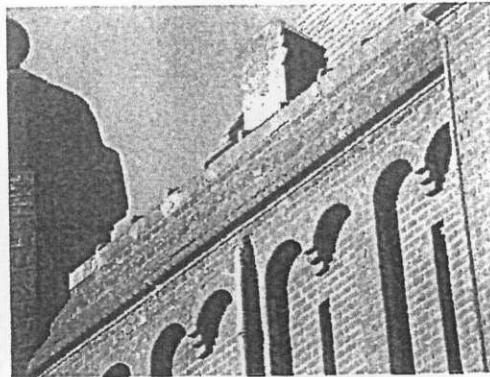
P205  
1280x960x24b jpeg



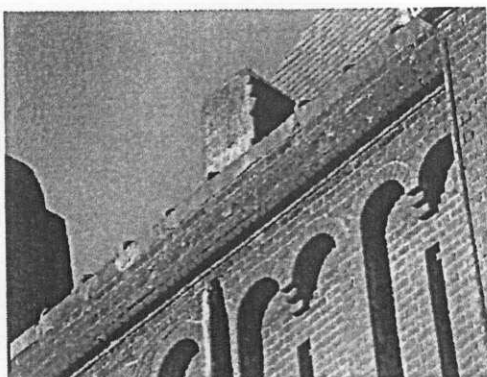
P206  
960x1280x24b jpeg



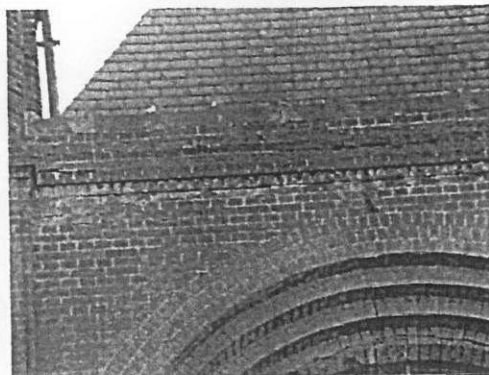
P207  
1280x960x24b jpeg



P208  
1280x960x24b jpeg



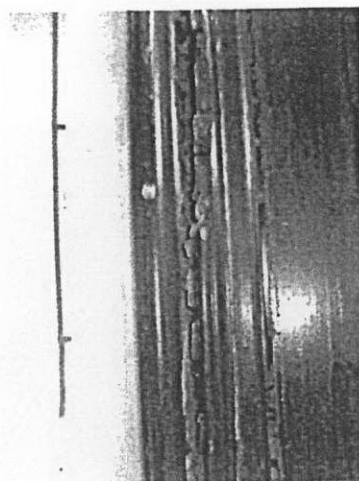
P209  
1280x960x24b jpeg



P210  
1280x960x24b jpeg



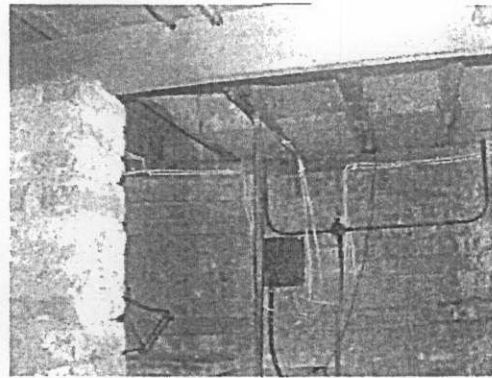
P211  
1280x960x24b jpeg



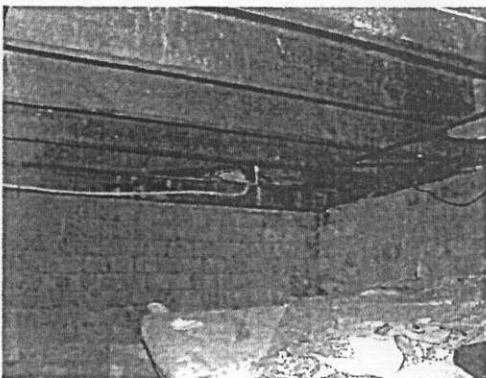
P212  
960x1280x24b jpeg



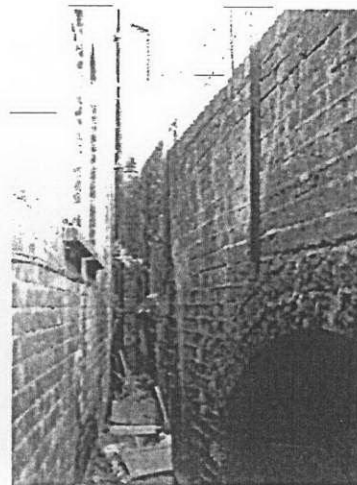
P213  
1280x960x24b jpeg



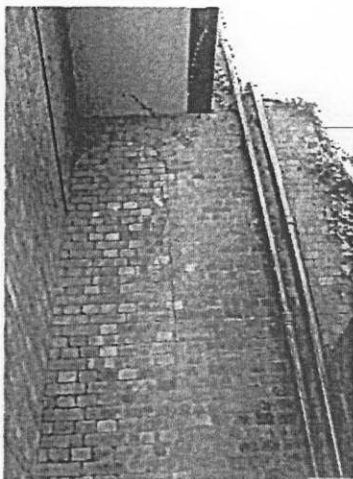
P214  
1280x960x24b jpeg



P215  
1280x960x24b jpeg



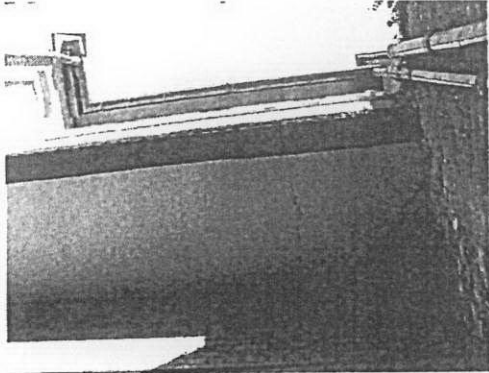
P216  
960x1280x24b jpeg



P217  
960x1280x24b jpeg



P218  
1280x960x24b jpeg



P219  
1280x960x24b jpeg



P220  
960x1280x24b jpeg