

GENERAL NOTES

All setting out must be checked on site  
All levels must be checked on site and refer to  
Ordnance Datum Newlyn unless alternative Datum given  
All fixings and weatherings must be checked on site  
All dimensions must be checked on site  
This drawing must not be scaled  
This drawing must be read in conjunction with the  
relevant specification clauses  
This drawing must not be used for land transfer purposes  
Calculated areas in accordance with Assael Architecture's  
Definition of Areas for Schedule of Areas  
This drawing must not be used on site unless issued for  
construction  
Subject to survey, consultation and approval from all  
statutory Authorities

Revision Status:  
P=Preliminary T=Tender C=Contract

© 2007 Assael Architecture Limited

Assael Architecture Limited owns the copyright of this  
design and document which must not be reproduced in  
whole or part without the written permission of Assael  
Architecture Limited.

DRAWING NOTES					
ELECTRONIC FILE REF N°		A1986 5550			
STATUS	REVISION	DATE	DRN	CHK	CDM
C1	FOR CONSTRUCTION	12.07.07	CK	AF	--

Assael

All details referred to on this drawing are  
not for construction until and unless they  
are marked for construction.

For planning

For information

For comment

For client approval

For construction

X

Inspace Partnerships Regeneration and New Homes		
REVIEWED		
PRELIMINARY	STATUS	
FOR COMMENT	A	
FOR CONSTRUCTION	B	
SIGNED	C	
DATE		

CLIENT

INSPACE PARTNERSHIPS

PROJECT TITLE

59-65 Belsize Road

DRAWING TITLE

Brise Soleil

SCALE @ A3 SIZE

DATE

1:200

JULY 07

DRAWING N°

STATUS & REVISION

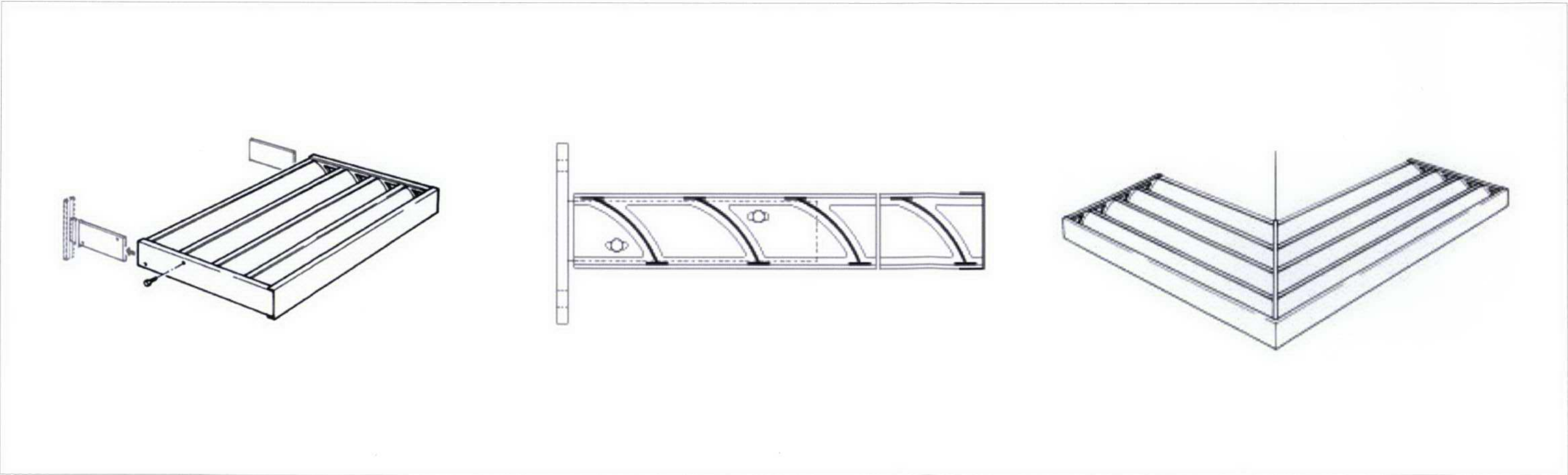
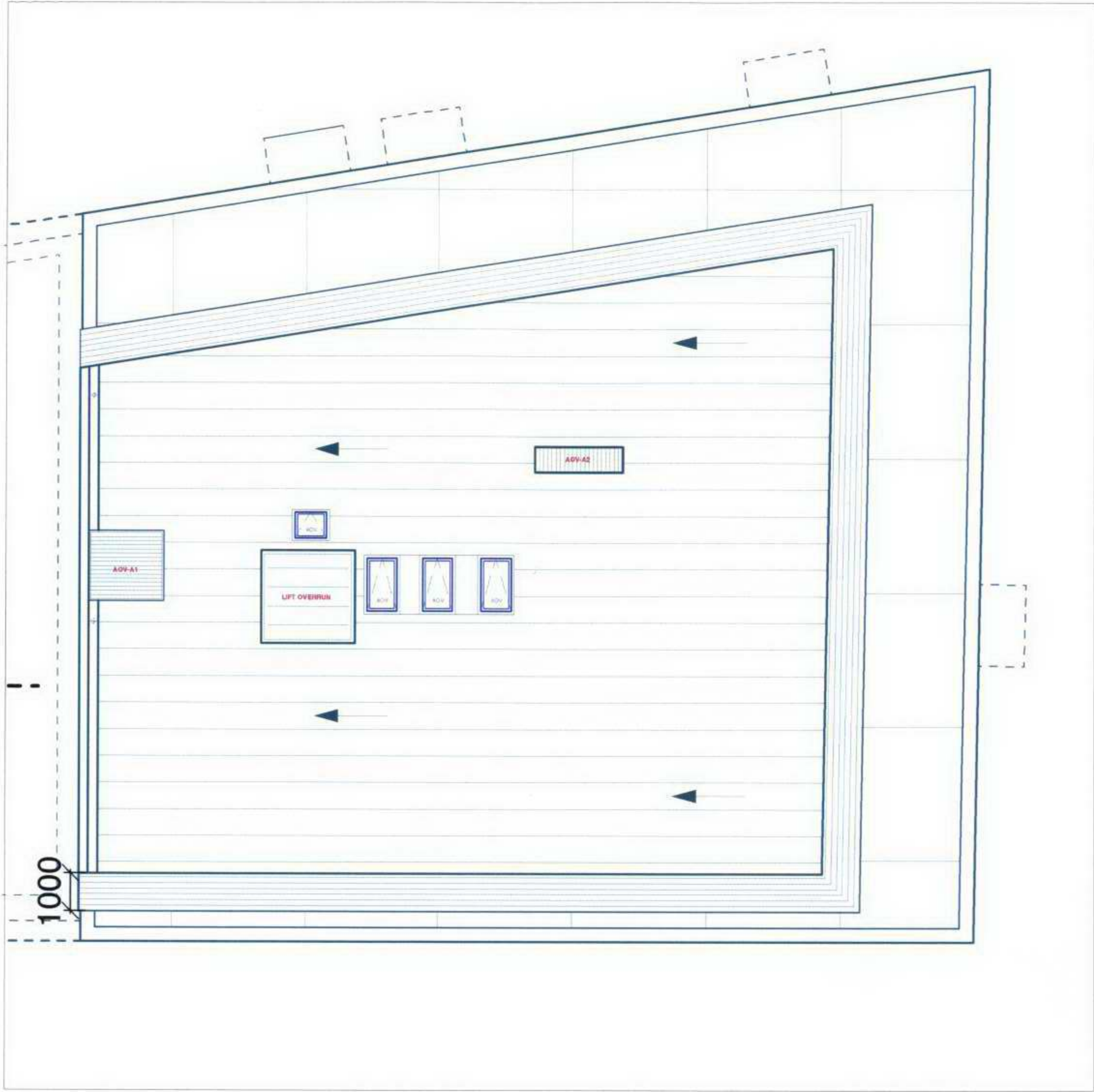
A1986 5550

C1

Assael

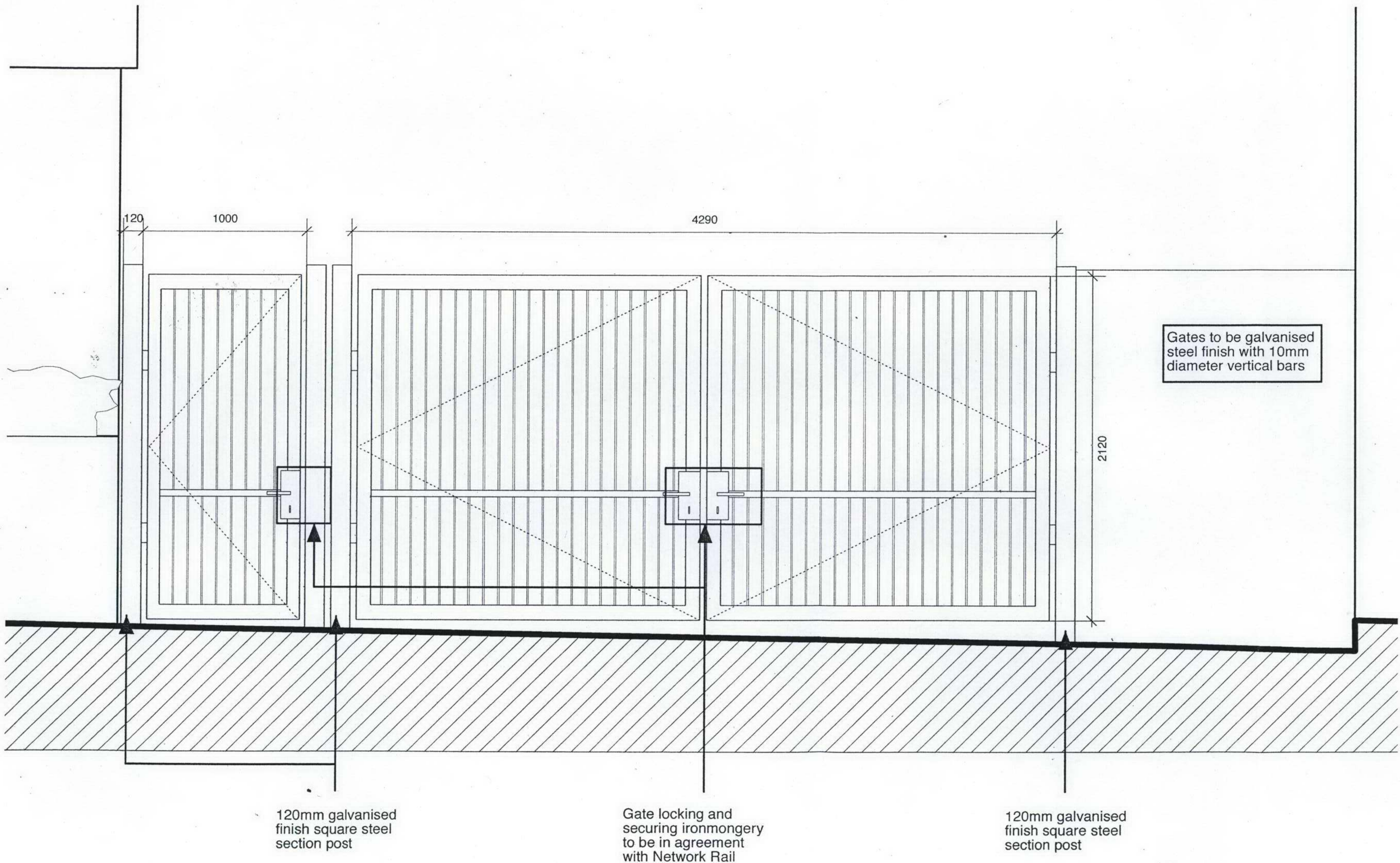
Assael Architecture Limited  
Studio 13  
50 Carnwath Road  
London SW6 3EG

T +44(0) 20 7736 7744  
F +44(0) 20 7736 6677  
E info@assael.co.uk  
W www.assael.co.uk



Luxalon Sun Control System: 110HC Sun Louvre





GENERAL NOTES

All setting out must be checked on site  
 All levels must be checked on site and refer to  
 Ordnance Datum Newlyn unless alternative Datum given  
 All fixings and weatherings must be checked on site  
 All dimensions must be checked on site  
 This drawing must not be scaled  
 This drawing must be read in conjunction with the  
 relevant specification clauses  
 This drawing must not be used for land transfer purposes  
 Calculated areas in accordance with Assael Architecture's  
 Definition of Areas for Schedule of Areas  
 This drawing must not be used on site unless issued for  
 construction  
 Subject to survey, consultation and approval from all  
 statutory Authorities

Revision Status:  
 P=Preliminary T=Tender C=Contract

© 2007 Assael Architecture Limited

Assael Architecture Limited owns the copyright of this  
 design and document which must not be reproduced in  
 whole or part without the written permission of Assael  
 Architecture Limited.

DRAWING NOTES						
ELECTRONIC FILE REF N°		A1986 5380				
STATUS	REVISION	DATE	DRN	CHK	CDM	
C1	FOR CONSTRUCTION	11.07.07	CK	AF	--	

**Assael**

All details referred to on this drawing are  
 not for construction until and unless they  
 are marked for construction.

For planning  
 For information  
 For comment  
 For client approval  
 For construction

☐  
☐  
☐  
☒  
☐

**Inspace Partnerships**  
 Regeneration and New Homes

**REVIEWED**

PRELIMINARY	STATUS
FOR COMMENT	A
FOR CONSTRUCTION	B
SIGNED	C
DATE	

CLIENT

**INSACE PARTNERSHIPS**

PROJECT TITLE

**59-65 Belsize Road**

DRAWING TITLE

**Side Access Gate**

SCALE @ A3 SIZE

**1:25**

DATE

**JULY 07**

DRAWING N°

**A1986 5380**

STATUS & REVISION

**C1**

**Assael**

Assael Architecture Limited  
 Studio 13  
 50 Carnwath Road  
 London SW6 3EG

T +44(0) 20 7736 7744  
 F +44(0) 20 7736 6677  
 E info@assael.co.uk  
 W www.assael.co.uk





Unit 62  
Blackpole Trading Estate West  
Worcester  
WR3 8ZJ

**RIGIDAL**  
Rough and Ready Building Solutions

Product: ZIPLOK 400  
Gauge: 0.9mm  
Finish: ALUMINIUM  
Colour: MICRO MATT STUCCO

Tel: +44 (0)1905 750500 Fax: +44 (0)1905 750555

- 1) Butterley Wilnecote: Country Red Smooth brick
- 2) Rigidal sheeting aluminium finish micro matt stucco
- 3) Trespa: Spring Green window panel
- 4) White sand cement render
- 5) Finish to window frames RAL 9006 to match zinc cladding

GENERAL NOTES

All setting out must be checked on site  
All levels must be checked on site and refer to Ordinance Datum Newlyn unless alternative Datum given  
All fixings and weatherings must be checked on site  
All dimensions must be checked on site  
This drawing must not be scaled  
This drawing must be read in conjunction with the relevant specification clauses  
This drawing must not be used for land transfer purposes  
Calculated areas in accordance with Assael Architecture's Definition of Areas for Schedule of Areas  
This drawing must not be used on site unless issued for construction  
Subject to survey, consultation and approval from all statutory Authorities

Revision Status:  
P=Preliminary T=Tender C=Contract

© 2007 Assael Architecture Limited

Assael Architecture Limited owns the copyright of this design and document which must not be reproduced in whole or part without the written permission of Assael Architecture Limited.

DRAWING NOTES					
ELECTRONIC FILE REF N°		A1986 510			
STATUS	REVISION	DATE	DRN	CHK	CDM
P1	FOR DISCHARGE OF PLANNING CONDITIONS	11.07.07	CK	AF	--

Assael

All details referred to on this drawing are not for construction until and unless they are marked for construction.

For planning

For information

For comment

For client approval

For construction

☒

☐

☐

☐

☐

Inspace Partnerships Regeneration and New Homes		
REVIEWED		
	PRELIMINARY	STATUS
	FOR COMMENT	A
	FOR CONSTRUCTION	B
SIGNED		C
DATE		

CLIENT

INSPLACE PARTNERSHIPS

PROJECT TITLE

59-65 Belsize Road

DRAWING TITLE

External Materials

SCALE @ A3 SIZE

DATE

nts JULY 07

DRAWING N°

STATUS & REVISION

A1986 510 P1

Assael

Assael Architecture Limited  
Studio 13  
50 Carnwath Road  
London SW6 3EG

T +44(0) 20 7736 7744  
F +44(0) 20 7736 6677  
E info@assael.co.uk  
W www.assael.co.uk