

Performance Specification
for
Replacement of TIMBER windows and doors

WINDOW RENEWAL PROGRAMME 2007/2008

- LB of Camden – 72 Messina Avenue

MH
JOINERY PRODUCTS

Plc

Unit 11, Parrett Way,
Colley Lane Industrial Estate,
Bridgwater, Somerset. TA6 5LD

Tel: 01278-421718

Fax: 01278-444792

Email: enquiries@mhjoineryproducts.plc.uk

MH
JOINERY PRODUCTS
Plc

KENSINGTON, VERTICAL SLIDE WINDOW SPECIFICATION

Manufacturer and Reference	High Performance Kensington, Vertical Slide range, manufactured by MH Joinery Products Plc. Tel: 01278-421718
Operation:	Vertically sliding, upper and lower sashes using balancing pulleys and weights operation.
Construction:	All joints to frames and sashes are combed, glued and finally fixed with non-ferrous pins in accordance with DIN 68602.
Timber Species:	Softwood: Unsorted European Redwood to BS1186 Part 1, Class 2/3. Imported with Pan European Forestry Council (PEFC) certification. Hardwood: Kiln dried Sapele
Preservative Treatment:	All timber frames are preservative treated by a double vacuum impregnation process with VASCOL, water based, environmentally friendly wood preservative in accordance with BS 5589.
Weather tightness:	AIR tested in accordance with BS 6375 Part 1: 1989 to 600 pa WATER to 300 pa, and WIND RESISTANCE to 2000 pa
Weather seals:	Twin compression and brush seals, Aquamac 21 to MH Joinery detail by SCHLEGEL Ltd. Tel: 01462 815500
Ironmongery:	Opening System: Heavy Duty pre-stretched nylon cord No4 by ROYD AND TUCKER Ltd. over brass pulley wheels and attached to pre-determined cast lead weights to give smooth balanced operation.
Locking System:	1nr Locking, Fitch pattern fastener. 2nr to sashes over 900mm wide. 2nr meeting rail bolts by MIGHTON SYSTEMS Ltd. Material and finish solid brass.
Lifts and pulls:	2nr lifts fitted to the bottom rail of the lower sash internally. 2nr pulls fitted to the bottom rail of the upper sash externally. Material and finish solid brass.
Remote Winders:	Remote control gear systems are available via outside contractors.
Disabled Considerations:	We are able to offer sashes that have been adjusted for a lighter feel on tension, to allow ease of slide.

Safety/Security:	Optional Pair of brass MIGHTON VENTLOKS, each 100mm apart, and fitted to the top sash, allowing the sashes to be locked in the closed position and the open position (100mm). This specification has been drawn up after consultation with local CPO's and in line with SBD recommendations. Also recognised as a means of boosting supplementary venting levels.
Supplementary Ventilation:	Discreet venting through head of frame and controlled via a Titon TV 4000 hit and miss vent internally.
Existing Vents/Fans	Any modifications to our existing framework to accommodate new or existing vents or fans will be chargeable.
Factory Glazing:	All sections have externally beaded profiles in line with good joinery practice. Factory installed 20mm Double Glazed Units with 4mm outer leaf, Toughened internally to all lower sashes over 1350 height and all doors. All Glass bead fixed to a putty profile and incorporating ALFAS security glazing tape to meet BS 7950: 1997. All glazing carried out in accordance with BS 6262.
Health and Safety:	Window Assemblies calculated to exceed CDM recommended limits are supplied de-sashed for ease of handling. Kensington sashes, in particular, are simply installed on site if necessary.
Building Regulation Part 'L'	Tested and achieved. Thermal Conductivity 2.0 W/m ² k
Glazing Bar type:	22mm width Applied Bar, incorporating internal structural ovolo moulded section and putty profile external applied bar. Air space between panes filled with a back-to-back spacer to simulate individual units.
Finishes:	Spray applied Full Factory Finish using water based Aquatop 2600 Micro-Porous Paint from TEKNOS COATINGS Ltd, Swerford, Oxfordshire. Tel: 01608-683494 When site decorating, it is very important that care is taken to avoid contact with operational parts of the window, as paint applied to weather-strips will impair overall performance.
Handling and Storage:	All windows that are factory finished shall be delivered on pallets. A protective layer of shrink-wrapping will be applied to the whole pallet load. Always store windows and doors in clean, ventilated and dry areas. Windows and doors should always be stacked vertically on bearers and spaced so as to avoid damage to factory fitted ironmongery. Never double stack windows, as this can lead to distortion of the framing and cause sashes to bind. All glazed doors should be stacked vertically. Unglazed doors should be stored flat, separated by battens with external beading uppermost.

Surveys:

An external site survey, carried out in conjunction with the main contractor, shall be carried out to establish the manufacturing sizes of the replacement windows and doors. Please note that all scaffolding should have been passed as fit for use, prior to our surveyors starting the survey.

Installation:

It is recommended that all window frames are installed into prepared structural openings at least 10mm larger (5mm per side) than overall frame size.

Frames should then be centralised within the openings by the use of wedges to ensure plumb and level. Further packing on multi-lights under mullion positions is essential to ensure there is no deflection of the cill.

Check that the diagonal dimensions are equal and that the sashes operate correctly.

We recommend the use of galvanised steel straps, screwed to the back of the frames and then to the inside of reveals at intervals of 450mm, and 150mm from each corner. On frames over 1000mm width, we advise additional fixings to the head and cill.

Alternatively, direct fixing of the frame to the structure by means of screws and plugs is acceptable at packing points only, taking care to avoid over tightening.

Warranties.

Workmanship:

Any goods supplied base stained, primed or vac-vac treated which prove faulty by way of defective material or workmanship during the period of 10 years from the date of delivery will, provided they have been stored and maintained in line with our terms and conditions and as previously described, will be replaced or repaired (at the sellers option) free of charge. This guarantee extends only to the replacement or repair of joinery.

Hardware:

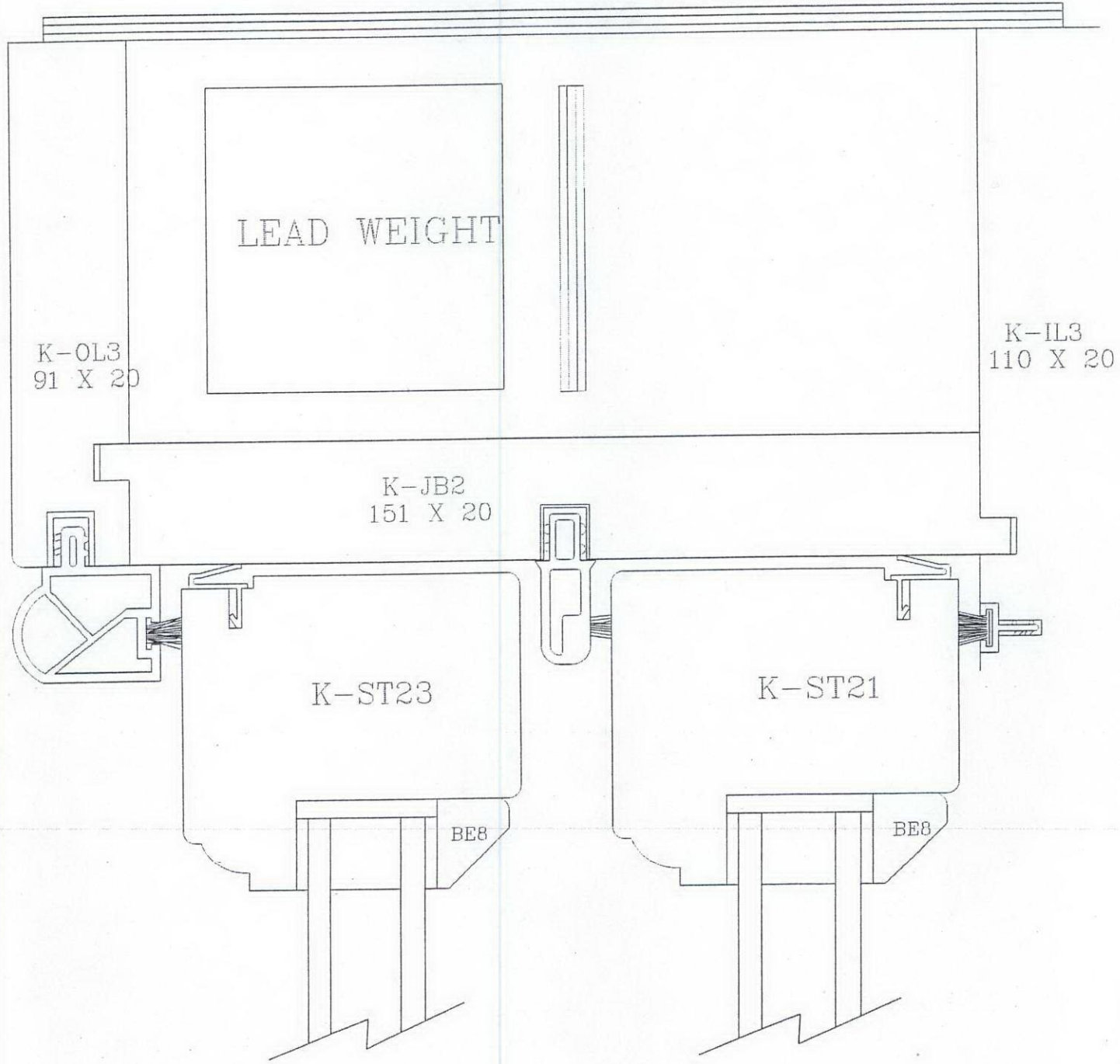
10 years for furniture and hardware breakdown under normal use and covers replacement cost only. This does not cover items failing after mis-use or handling.

Factory Glazing:

10 years against premature breakdown of the hermetically sealed double-glazed units. Initial 5 years supply and fit. Subsequent period supply basis only.

Preservative:

Timber frames, preservative treated using the double vacuum impregnation process, carry a 30 year guarantee against fungal decay and insect attack.



MH Joinery Products PLC

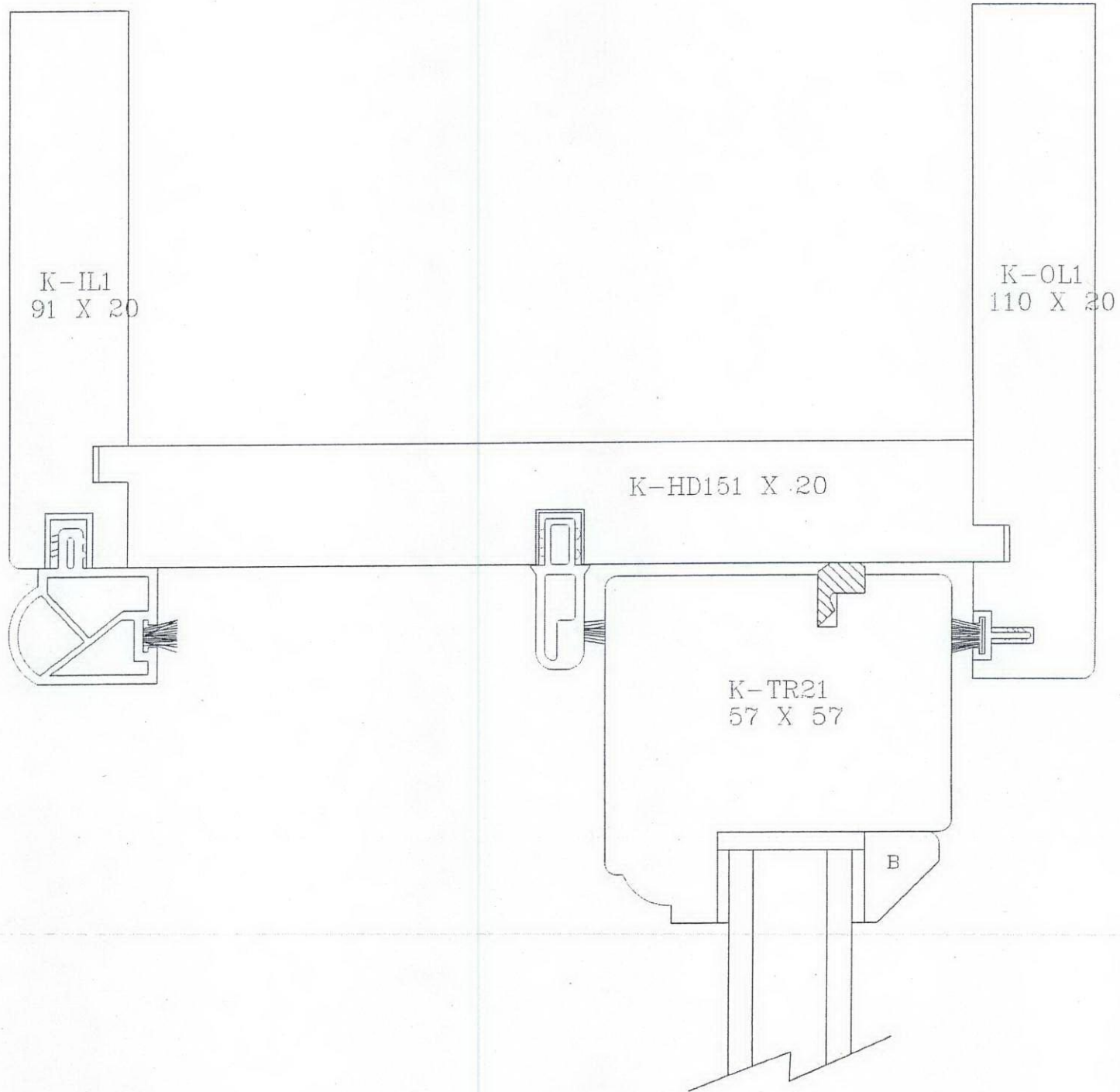
Range: KENSINGTON

Scale: 1:1

Date: 22/8/2000 Drawing Ref: ABAR_r JAMB

Section:

JAMB AND STILES

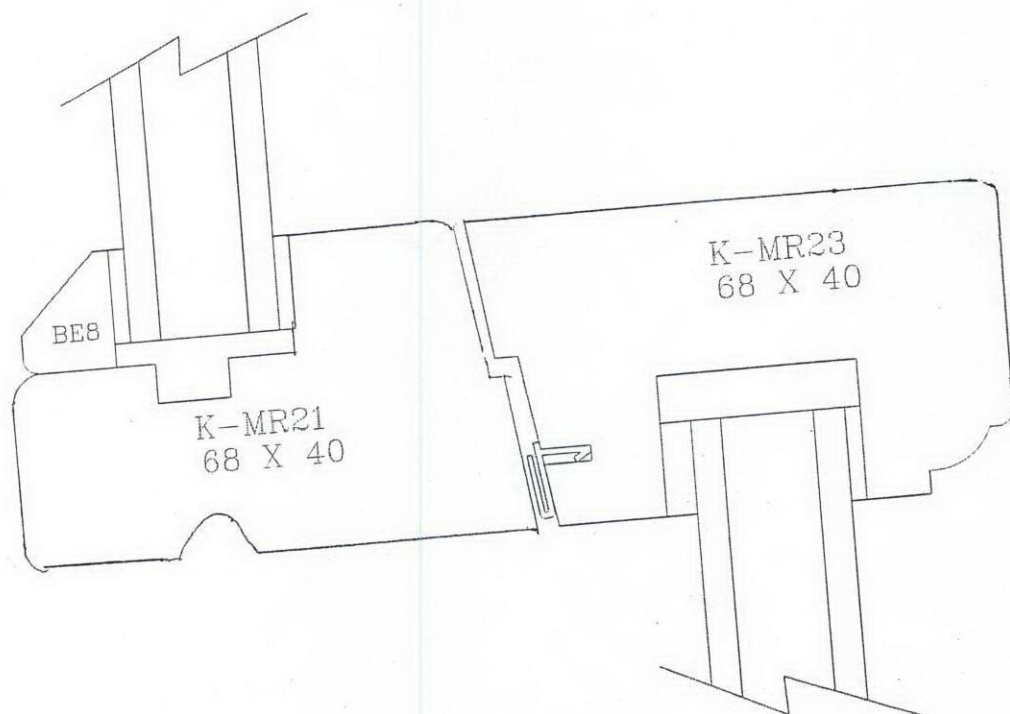


Range: KENSINGTON

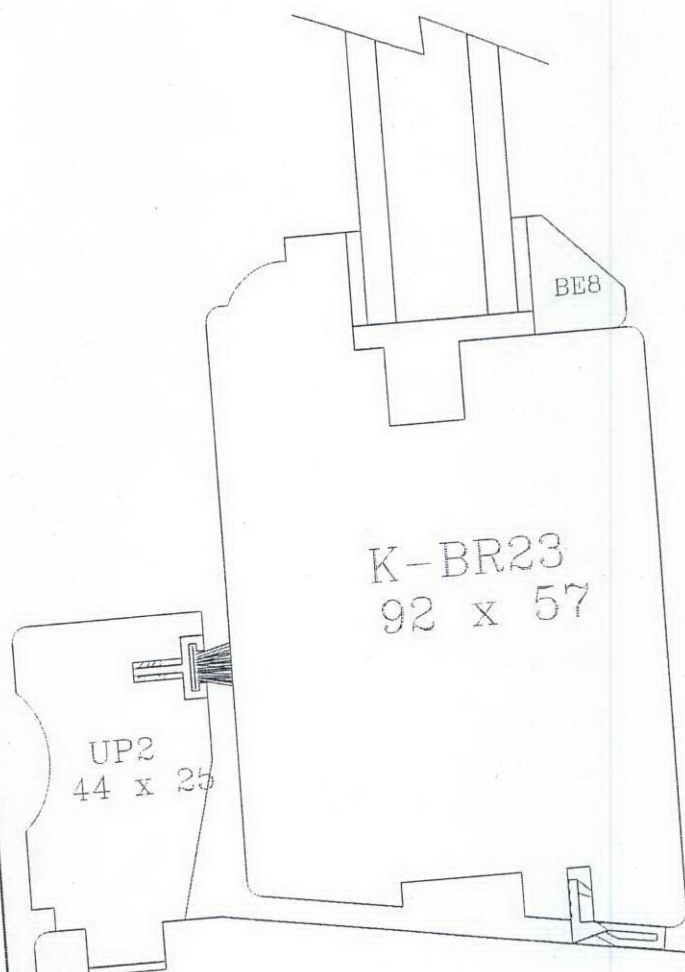
Scale: 1:1

Date: 22/8/2000 Drawing Réf: ABAR_r HEAD

Section: HEAD AND TOP RAIL



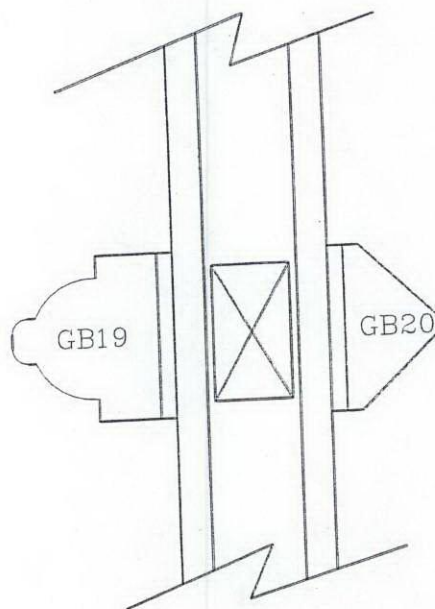
MH Joinery Products PLC		Range: KENSINGTON
Scale: 1:1	Date 22/8/2000	Drawing Ref: ABAR.J
Section: MEETING RAILS (With Horns)		



K-CL3
181 x 69

MH Joinery Products PLC		Range: Kensington
Scale: 1:1	Date: 22/2/2001	Drawing Ref: ABAR r C
Section: Cill and Bottom Rail		

SECTION 5:5



MH Joinery Products PLC

Range: CHATSWORTH

Scale: 1:1

Date: 14/8/2000 Drawing Ref: ABAR_r ABAR

Section: APPLIED BARS