



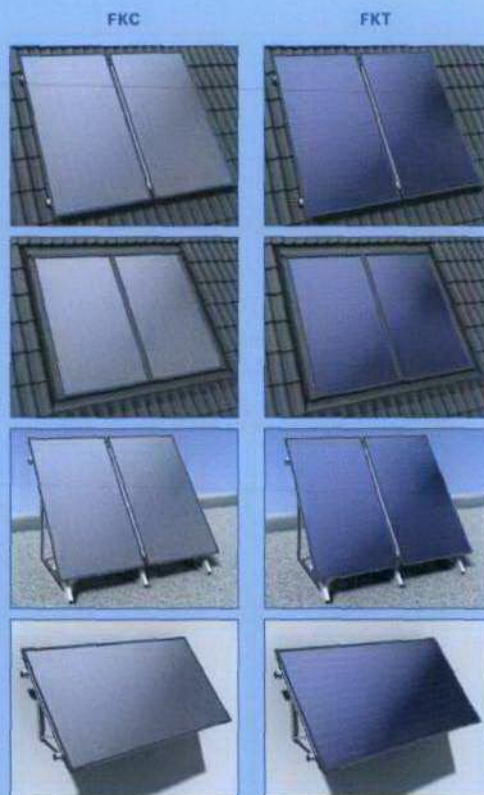
Installing the Worcester Greenskies FK series of solar panels

Worcester solar panels are now available in two different orientations and in standard (FKC) and high performance (FKT) versions.

The panels are joined by a range of fittings which allow installations on pitched roofs or integrated into the roof. In addition options are available for flat roofs and, with the landscape version, wall mounting.

Site preparation/portability

In addition to ensuring that the panels are sited in the correct direction and away from sources of shade, particular attention should be paid to site access and the safe installation of the panels. When working at height care should be taken to ensure that the required safety equipment is available and correctly used.



Standard on-roof installation

Standard in-roof installation

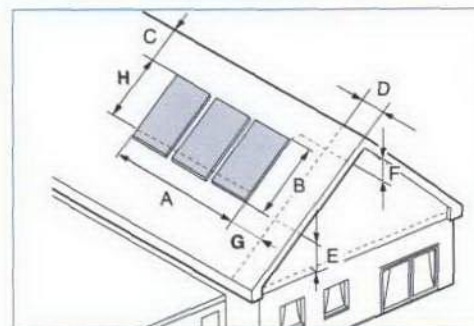
Standard flat roof installation

Standard wall mounted installation

Refer to page 30-36 for part number ordering details.

Standard on-roof installation

Panel dimensions and clearances



Space required for collector array

Space required for portrait installed collectors (including facing panels all around)		
No. of collectors	Dimension A (m)	Dimension B (m)
2	2.32	2.07
3	3.49	2.07
4	4.66	2.07
5	5.83	2.07
6	7.06	2.07
7	8.17	2.07
8	9.34	2.07
9	10.51	2.07

Space required for landscape installed collectors (including facing panels all around)		
No. of collectors	Dimension A (m)	Dimension B (m)
2	4.17	1.15
3	6.26	1.15
4	8.36	1.15
5	10.45	1.15
6	12.55	1.15
7	14.64	1.15
8	16.74	1.15
9	18.61	1.15

Please note the following minimum space requirements.

Dimension A and B

Area required for the collector array.

Dimension C

At least two tiles to the roof or chimney. Otherwise there is a risk of damaging the tiles, particularly if the tiles are laid in mortar.

Dimension D

Roof overhang including gable wall thickness.

Dimension E

Minimum 30cm for fitting the connection cables in the attic.

Dimension F

Minimum 40cm for installing the connection cables in the attic (if installing a vent, sufficient space must also be allowed for in the vicinity of the flow outlet).

Please note that the air vent must be the highest point of the system.

Dimension G

Minimum 50cm left and right of the collector array for the connection cables under the roof.

Dimension H

Dimension H is 1.900mm (1.000mm for landscape collectors) and is the minimum distance from the upper edge of the collector to the lower profile rail, which is installed first.