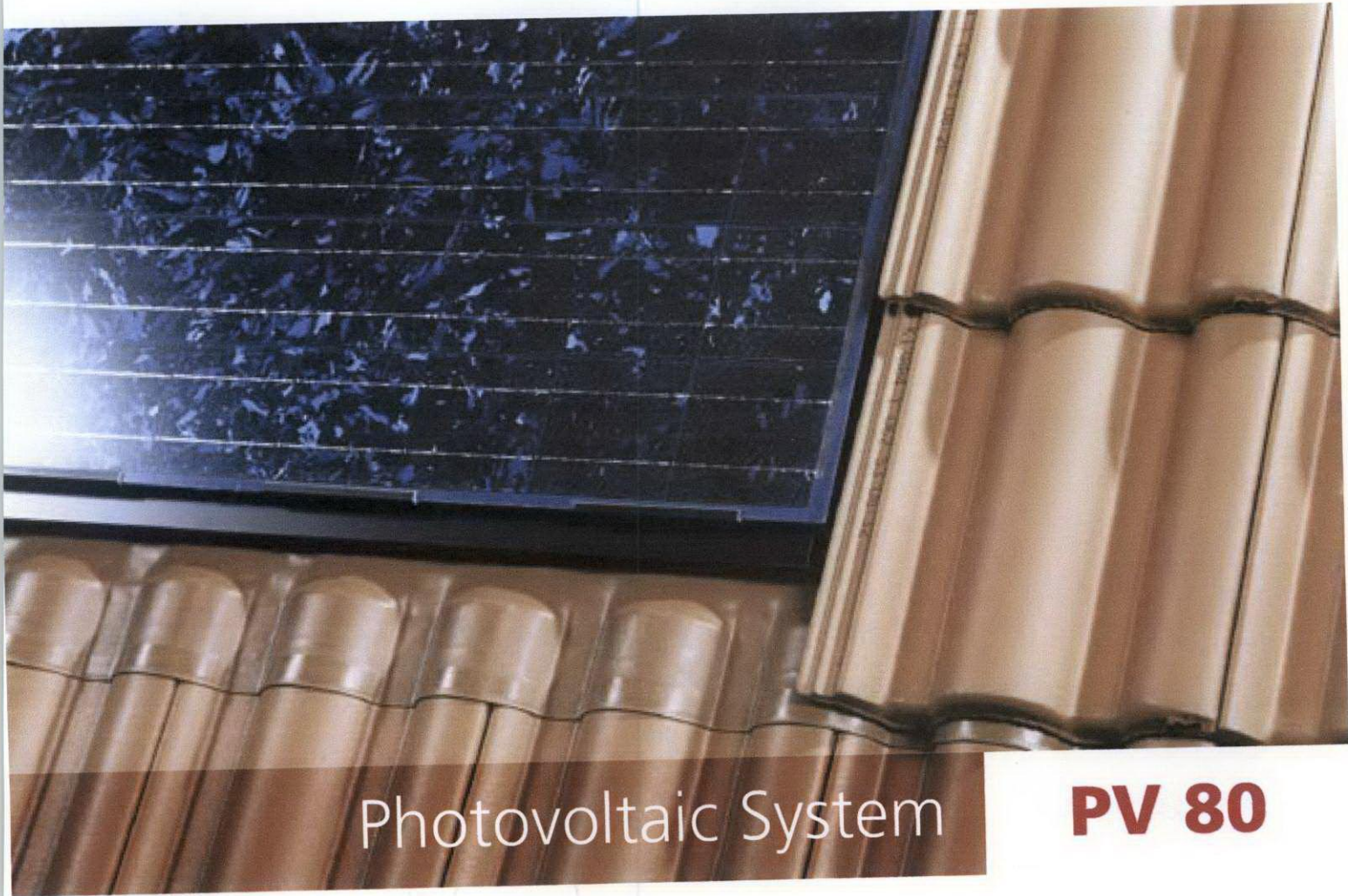


the **Redland** range



Photovoltaic System

PV 80



LAFARGE
ROOFING

Photovoltaic System

PV 80

Product Description

The PV 80 photovoltaic system from Lafarge Roofing converts energy from the sun into electrical current. It is ecologically beneficial, non-polluting and does not produce any harmful residues. PV 80 is also a universal solar power solution. Whether the roof is covered in profiled tiles, flat tiles, slates or metal sheets, PV 80 is a fitting and beautiful integrated solution.

The solar panels are directly connected to an inverter for the conversion of DC (direct current) into AC (alternating current), which is either used within the building or exported to the grid, which your electricity provider pays you for.

Safety is ensured by the integral insulated plug and socket connecting system. The SRT 80 solar panels have been certified in accordance with IEC 1215 (Ispra 503) and the panel design is based on protective insulation (Protection Class II). A 25 year guarantee on the performance of the panel supports a high standard of quality and operation.

Areas of application

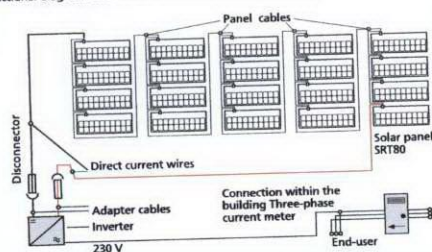
The solar panels have been especially designed for direct integration into pitched roofing, where they fulfil a dual function:

1. Efficient generation of solar electricity
2. A durable, weatherproof roof covering (backed up by the Redland 15 Year Roof System Guarantee)

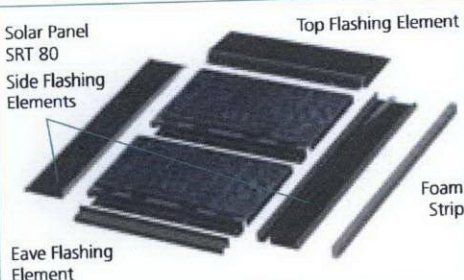
The PV 80 system works grid connected within the mains electrical network. The PV configuration must be rectangular or square – and a system can be almost any size.



Functional diagram: Basic unit with 20 serially connected panels



Solar Panel SRT 80
Side Flashing Elements



Technical data

Material: Dark blue polycrystalline solar cells, fitted with toughened glass on black base

Size (One panel): 1197 x 530mm
(1200mm x 520mm installed)

Cover: 0.62 m² per panel

Minimum Pitch: 25°

Maximum Pitch: 60°

Minimum Gauge/Batten Spacing: n/a

Maximum Gauge/Batten Spacing: n/a

Weight: 6.8 kg per panel including fixings

Power Output: 80Wp

Open Circuit Voltage: 22.1V

Short-circuit Current: 4.8A

Fitting and installation: The laying and circuit connection of the solar panels is carried out by a roofer, the electrical installation by a licensed electrician.

Compatibility

The PV 80 system is a **universal system** and is compatible with a wide range of popular roof tiles. Please contact us on **08700 601000** for details.

Tel: **08705 601000**
E-mail: **roofing@lafarge-roofing.co.uk**
www.lafarge-roofing.co.uk

Redland
15 YEAR ROOF SYSTEM
GUARANTEE