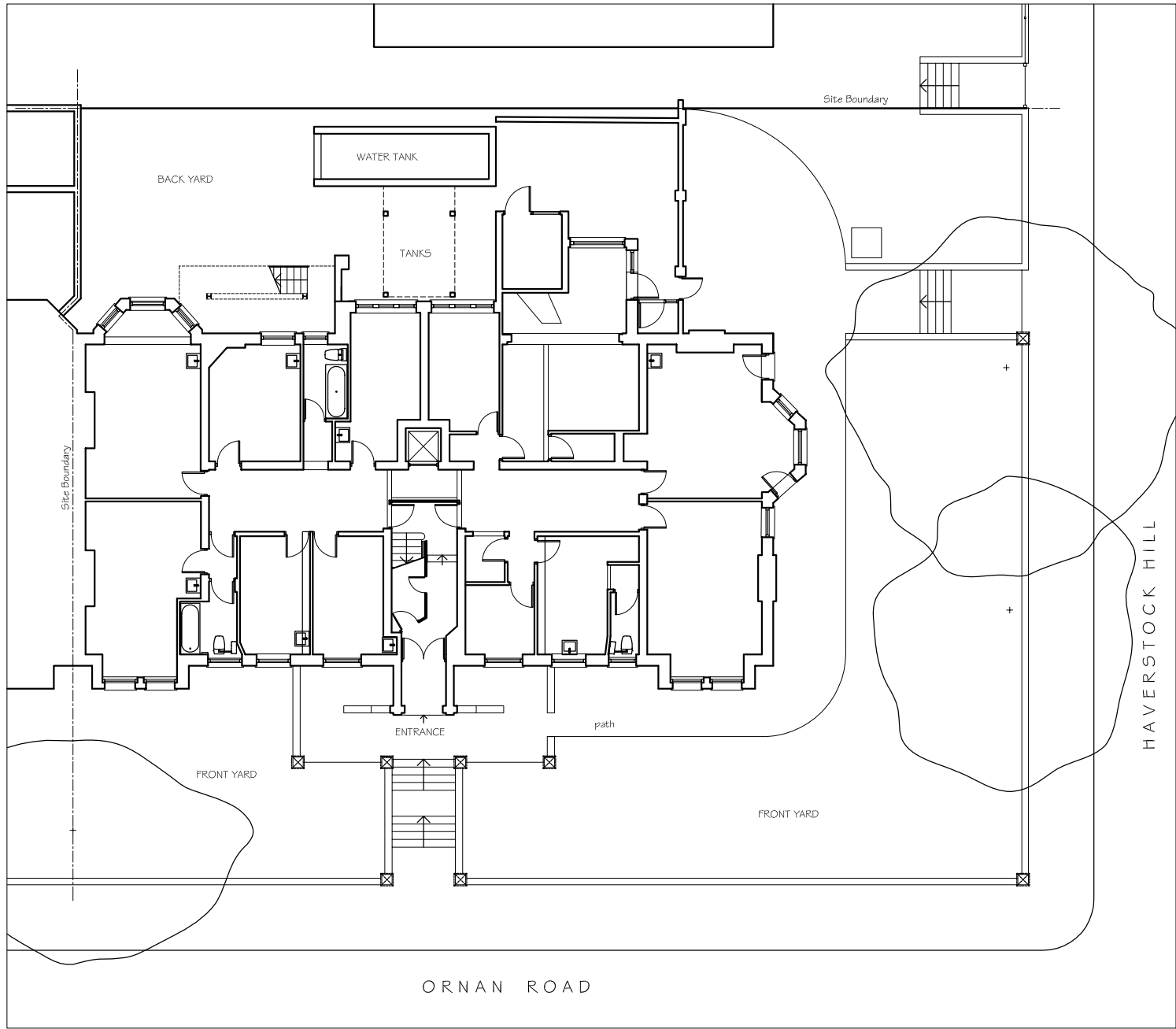


Ordnance Survey
Ornan Court, 2 Ornan Road
Scale 1:1250@A3



Site Plan as Existing
Ornan Court, 2 Ornan Road
Scale 1:200@A3

Issued For
PLANNING


General Notes:
THIS DRAWING HAS BEEN PREPARED BY DS DESIGN SOLUTIONS AND THE DATA CONTAINED HEREIN MAY BE USED OR REPRODUCED ONLY WITH DS DESIGN SOLUTIONS' APPROVAL.

Rev.	Description	Date	Signed	Checked
-	-	-	-	-

--	--

--	--

Scale 1:200; 1250@A3	Date 02.11.2006	Drawn by GI	Checked by DS
Drawing Title Ordnance Survey Map and Site Plan as Existing			
Project Ornan Court, 2 Ornan Road Hampstead, London NW3 4PT			

 design solutions			Studio 18, Liddell Road London NW6 2EW Phone 020 7624 6680 Fax 020 7624 6681 www.DesignSolutionsUK.com		
Project no. 06/0159	Drawing no. 700	Revision 00			