

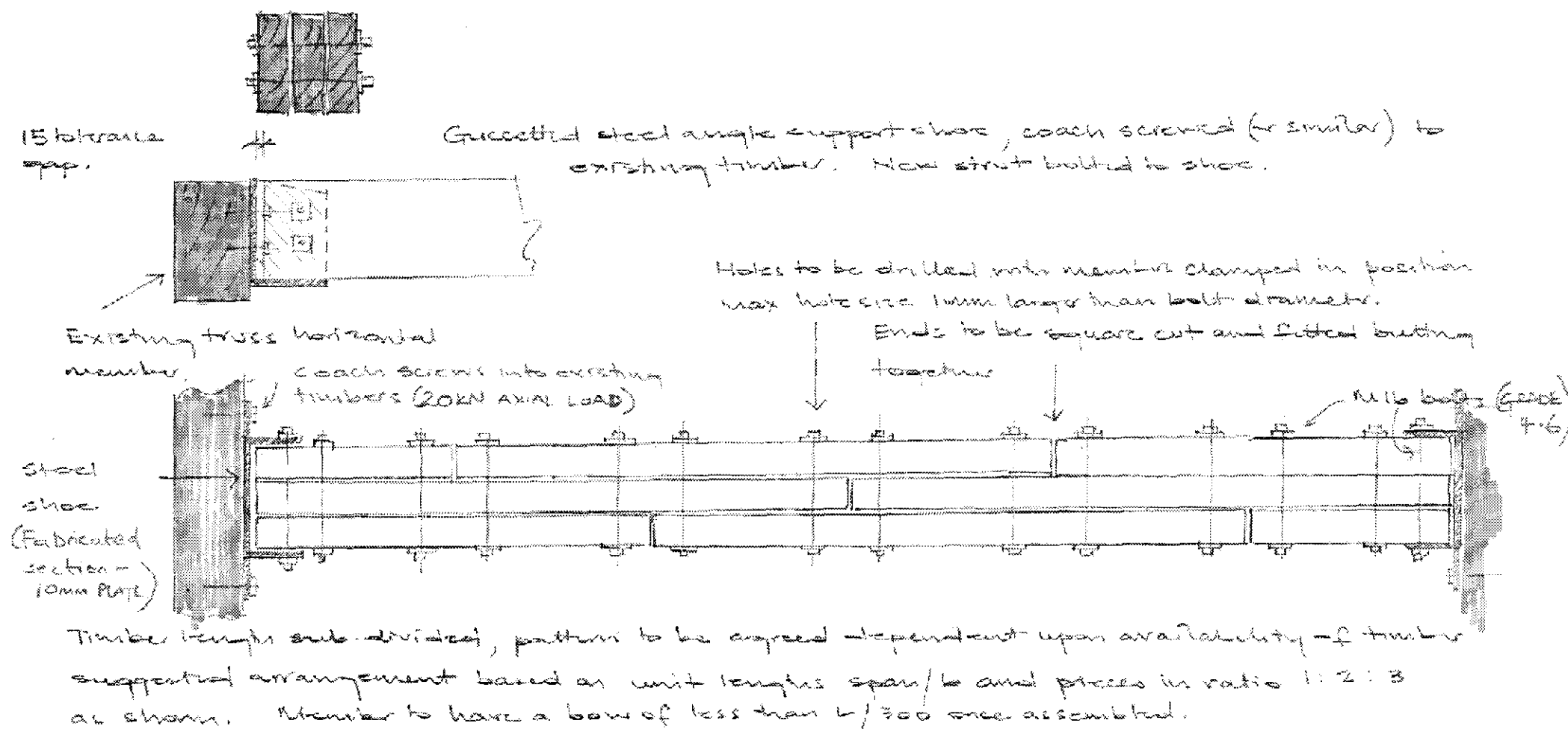
NEW TIMBER STRUTS (BEAM X)

Lengths of timber to be determined from site survey

NOTE: FOR TIMBER TO MASONRY (CHIMNEY) CONNECTION, DETAIL TO BE SIMILAR TO BELOW BUT USING APPROPRIATE FIXINGS (i.e. HIT! HIT ANCHORS)

Timber struts

3 no. C24 planed timbers 87 x 255 bolted together to form 251 x 255 square section. Timbers treated for external condition & then enclosed in weather protection.



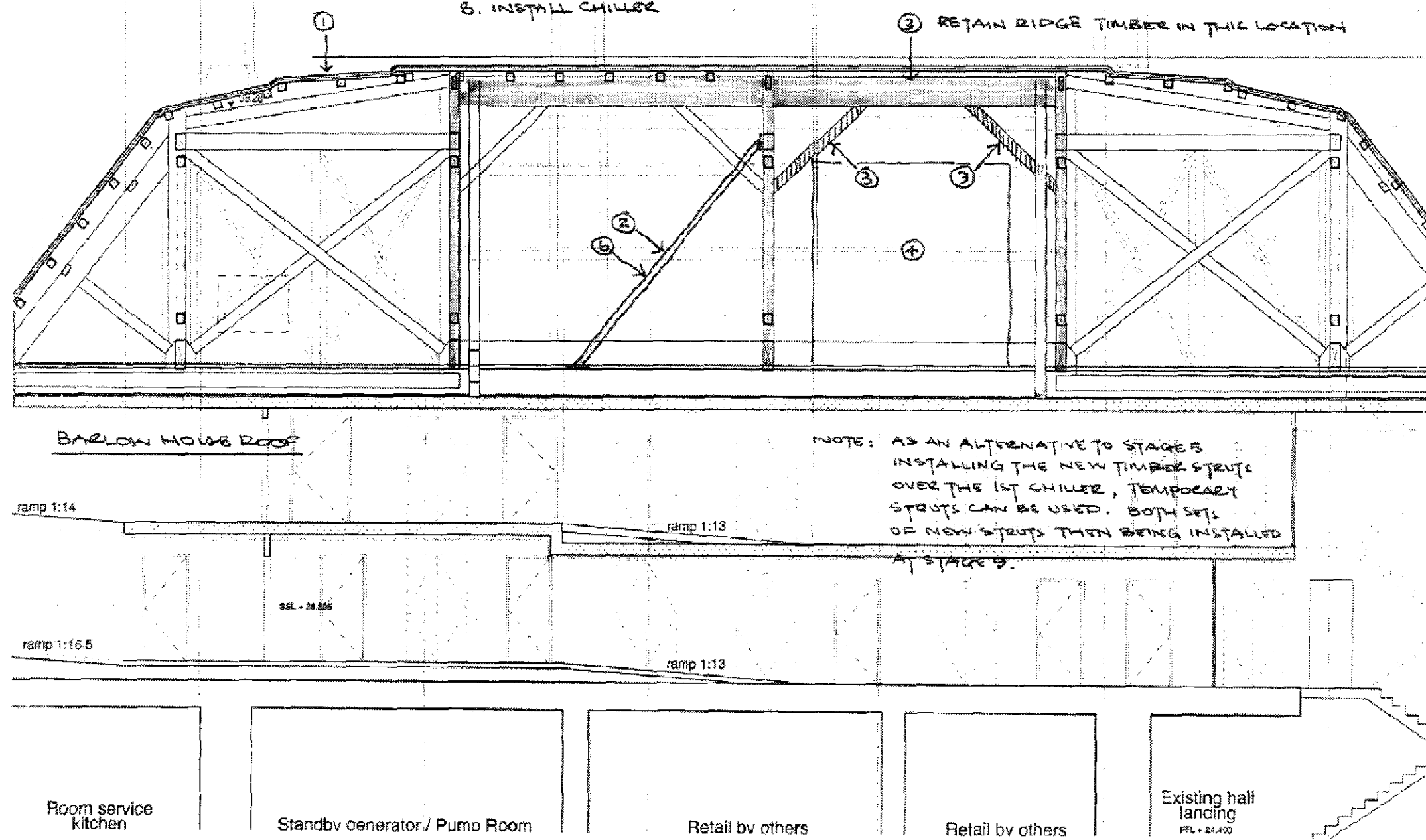
Join end distances to meet requirements of BS5268, similarly bolt spacings & edge distances

Note: Timbers as shown for beam X can be substituted for glulam section of equivalent dimensions

Detail 1: New Timber Struts - Beam X

CONSTRUCTION SEQUENCE

1. REMOVE ROOF COUNTERS
2. REMOVE ROOF TIMBERS OVER 1ST CHILLER POSITION
3. INSTALL NEW TIMBER STRUTS OVER 2ND CHILLER
4. INSTALL 1ST CHILLER
5. INSTALL NEW TIMBER STRUTS OVER 1ST CHILLER
6. REMOVE INCLUDED TEMPORARY SHORE
7. REMOVE ROOF TIMBERS OVER SECOND CHILLER AS 3.
8. INSTALL CHILLER
9. RETAIN RIDGE TIMBER IN THIS LOCATION
10. INSTALL ROOF PURLINS AND CLADDING TO WHOLE ROOF.



Construction Sequence

General Notes:

1. Drawings are not to be scaled (images have been scanned).
2. For typical Connection Details refer to Drg No. 18000/S_1145.
3. Connection design forces shown thus: (___kN), acting downwards. All forces are factored. Where such connection forces are only shown at one end of the beam it should be assumed the force is the same at both ends.
4. Concrete grade to insitu beams and slabs (not on steel decking) to be RC40, refer to Arup concrete specification details. Nominal cover to all reinforcement to be 30mm, to BS8500.
5. Concrete grade to insitu slabs on permanent metal decking to be RC30, refer to Arup concrete specification for details. Nominal Cover to be 30mm.
6. For Temporary Works proposals refer to Drg No. 111800/S_1147 & S_1743.
7. Concrete upstand to all levels at front of lift to be provided. Refer to Drg No. 118000/S_1146 Detail 'F'.
8. Locations of Existing W.I. Beams to be confirmed to Engineer prior to demolition.
9. Any discrepancies between Architect's & Engineer's Drawings to be highlighted to both parties.
10. All general dimensional information & setting out to be referred to Architect's Drawings.
11. Lifting beams & secondary lift steelwork to be Contractor designed.
12. Proposed method statement & construction sequence to be agreed with Engineer.

C1	06/08/07	JB	JB	BJ
Issued For Construction				
Issue	Date	By	Chkd	Appd

ARUP

13 Fitzroy Street
London W1T 4BQ
Tel +44 (0)20 7636 1531 Fax +44 (0)20 7580 3924
www.arup.com

Client
**Manhattan Lofts
Corporation Limited**

Job Title
St. Pancras Chambers

Drawing Title
**Barlow House
Roof Timber Alterations
Details and Construction Sequence**

Scale at A1			
Plot ID	DCAFCDS4-ED1E-46C5-8E78-0D91BD9BD94C		
Drawing Status			
Construction			
Job No	Drawing No	Issue	
118000	S 6325	C	