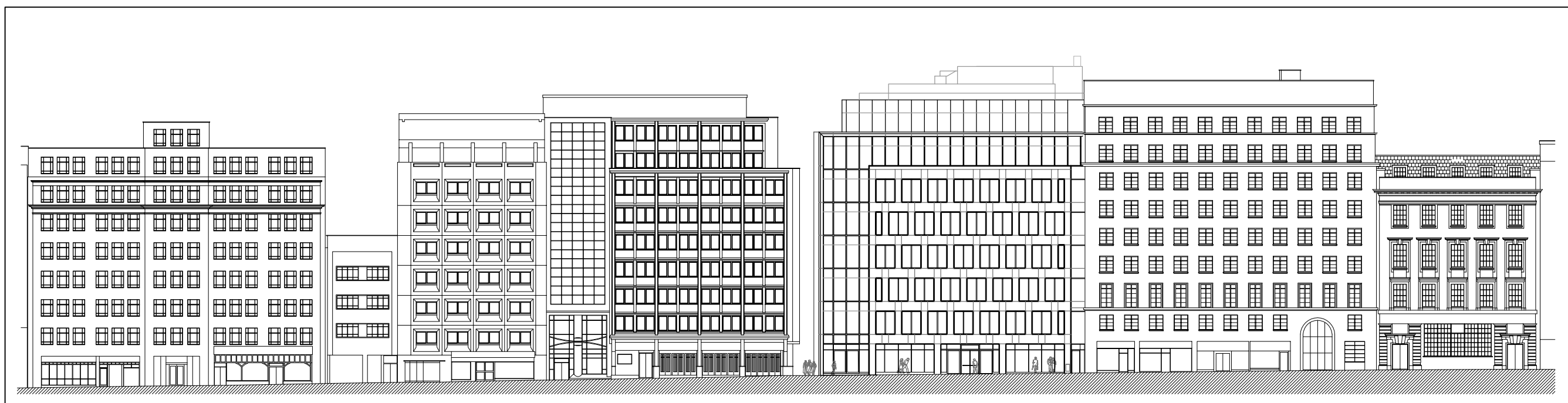


1 Site Elevation - Existing
1:250



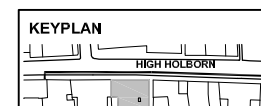
2 Site Elevation - Proposed
1:250

CHICHESTER HOUSE

North Site Elevation

3829_TP 22 [Revision A] Scale 1:250

01/10/2007



0 1m 5m 10m





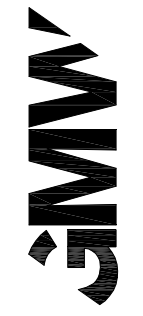
CHICHESTER HOUSE
North Elevation
3829_TP 15 [Revision C] Scale 1:200
01/10/2007

0 1m 5m 10m

- MATERIALS**
- 1 Full height clear glass panel in silver grey anodised aluminium framing
 - 2 Full height translucent glass panel in silver grey anodised aluminium framing
 - 3 Portland stone
 - 4 Clear glass window in silver grey anodised aluminium framing
 - 5 Clear glass shopfront
 - 6 Office entrance
 - 7 Full height glazed panel with visual veiling
 - 8 Vertical glass fin

- 9 Glazing / Artwork to base of building
- 10 PPC window frames (tilt & turn double glazed)
- 11 High quality coloured render
- 12 PPC metal canopy
- 13 Fire resistant glazing on boundary
- 14 Silver grey metal acoustic screen
- 15 Silver grey metallic panel cladding
- 16 Portland stone with coloured lining
- 17 Projecting oriel window with silver grey anodised aluminium cheek

- 18 Toughened glass with sand blasted backing or similar





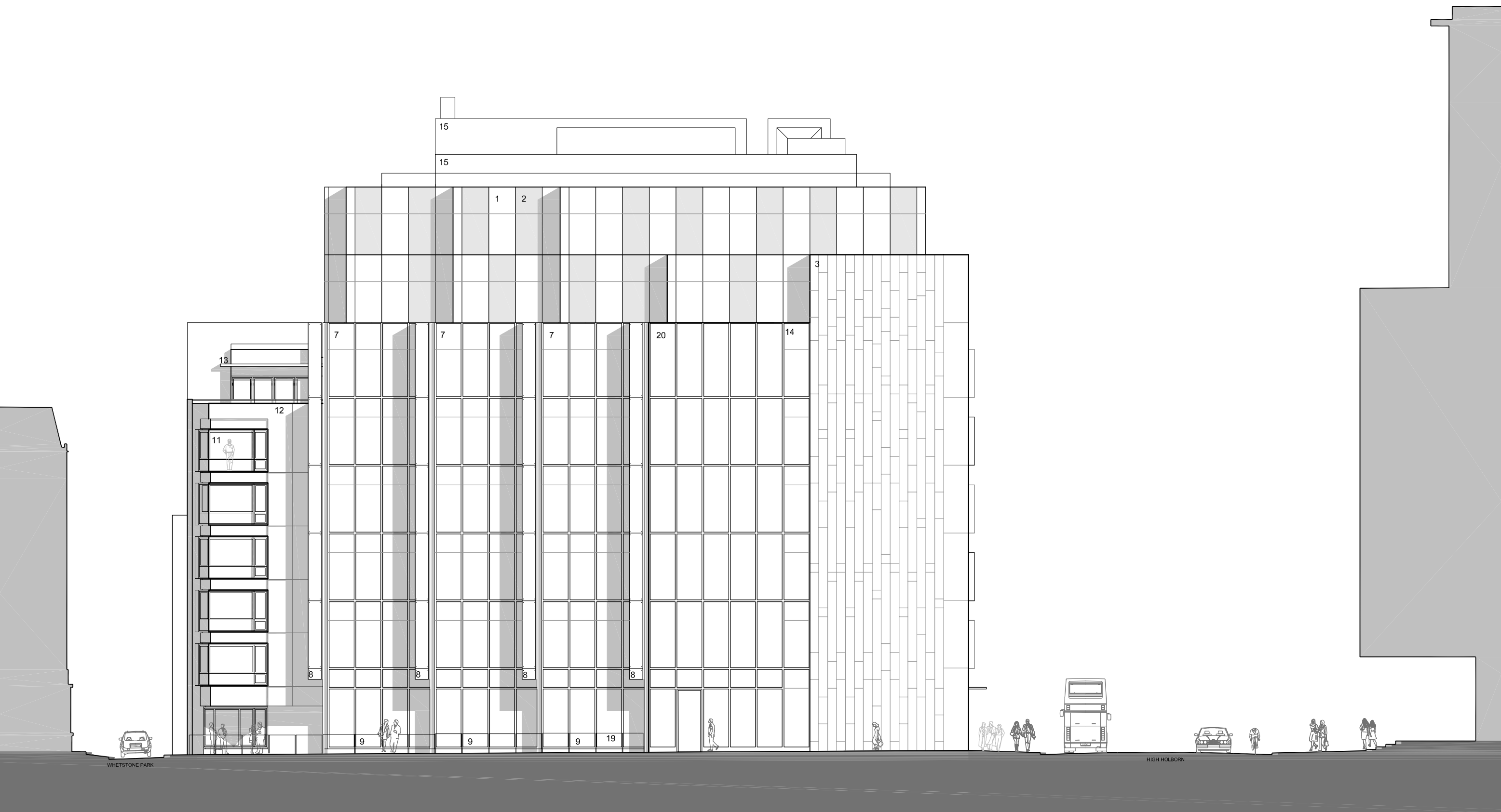
CHICHESTER HOUSE
South Elevation
3829_TP 16 [Revision C] Scale 1:200
01/10/2007

- MATERIALS**
- 1 Full height clear glass panel in silver grey anodised aluminium framing
 - 2 Full height translucent glass panel in silver grey anodised aluminium framing
 - 3 Portland stone
 - 4 Clear glass window in silver grey anodised aluminium framing
 - 5 Clear glass shopfront
 - 6 Office entrance
 - 7 Full height glazed panel with visual veiling
 - 8 Vertical glass fin

- 9 Glazing / Artwork to base of building
- 10 PPC window frames (tilt & turn double glazed)
- 11 High quality coloured render
- 12 PPC metal canopy
- 13 Fire resistant glazing on boundary
- 14 Silver grey metal acoustic screen
- 15 Silver grey metallic panel cladding
- 16 Portland stone with coloured lining
- 17 Projecting oriel window with silver grey anodised aluminium cheek

- 18 Toughened glass with sand blasted backing or similar

0 1m 5m 10m



CHICHESTER HOUSE
East Elevation
3829_TP 17 [Revision C] Scale 1:200
01/10/2007

0 1m 5m 10m

- MATERIALS**

 - 1 Full height clear glass panel in silver grey anodised aluminium framing
 - 2 Full height translucent glass panel in silver grey anodised aluminium framing
 - 3 Portland stone
 - 4 Clear glass window in silver grey anodised aluminium framing
 - 5 Clear glass shopfronts
 - 6 Office entrance
 - 7 Full height glazed panel with visual veiling
 - 8 Vertical glass fin
- 9 Glazing / Artwork to base of building
 - 10 Glass block wall
 - 11 PPC window frames (tilt & turn double glazed)
 - 12 High quality coloured render
 - 13 PPC metal canopy
 - 14 Fire resistant glazing on boundary
 - 15 Silver grey metal acoustic screen & louvres
 - 16 Silver grey metallic panel cladding
 - 17 Portland stone with coloured lining
- 18 Projecting oriel window with silver grey anodised aluminium cheek
 - 19 Toughened glass with sand blasted backing of similar
 - 20 Glazed opaque insulated panel





CHICHESTER HOUSE

West Elevation

3829_TP 18 [Revision C] Scale 1:200
01/10/2007

0 1m 5m 10m

MATERIALS

- 1 Full height clear glass panel in silver grey anodised aluminium framing
- 2 Full height translucent glass panel in silver grey anodised aluminium framing
- 3 Portland stone
- 4 Clear glass window in silver grey anodised aluminium framing
- 5 Clear glass shopfront
- 6 Office entrance
- 7 Full height glazed panel with visual veiling
- 8 Vertical glass fin

- 9 Glazing / Artwork to base of building
- 10 PPC window frames (tilt & turn double glazed)
- 11 High quality coloured render
- 12 PPC metal canopy
- 13 Fire resistant glazing on boundary
- 14 Silver grey metal acoustic screen & louvres
- 15 Silver grey metallic panel cladding
- 16 Portland stone with coloured lining
- 17 Projecting oriel window with silver grey anodised aluminium cheek

- 18 Toughened glass with sand blasted backing