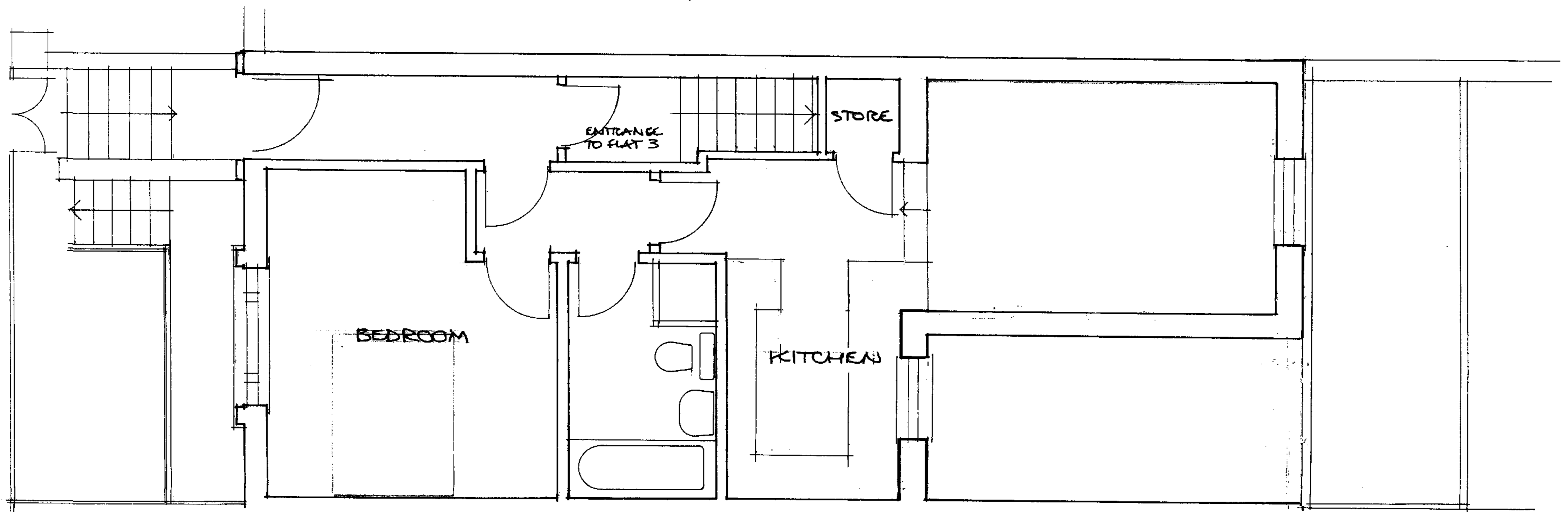
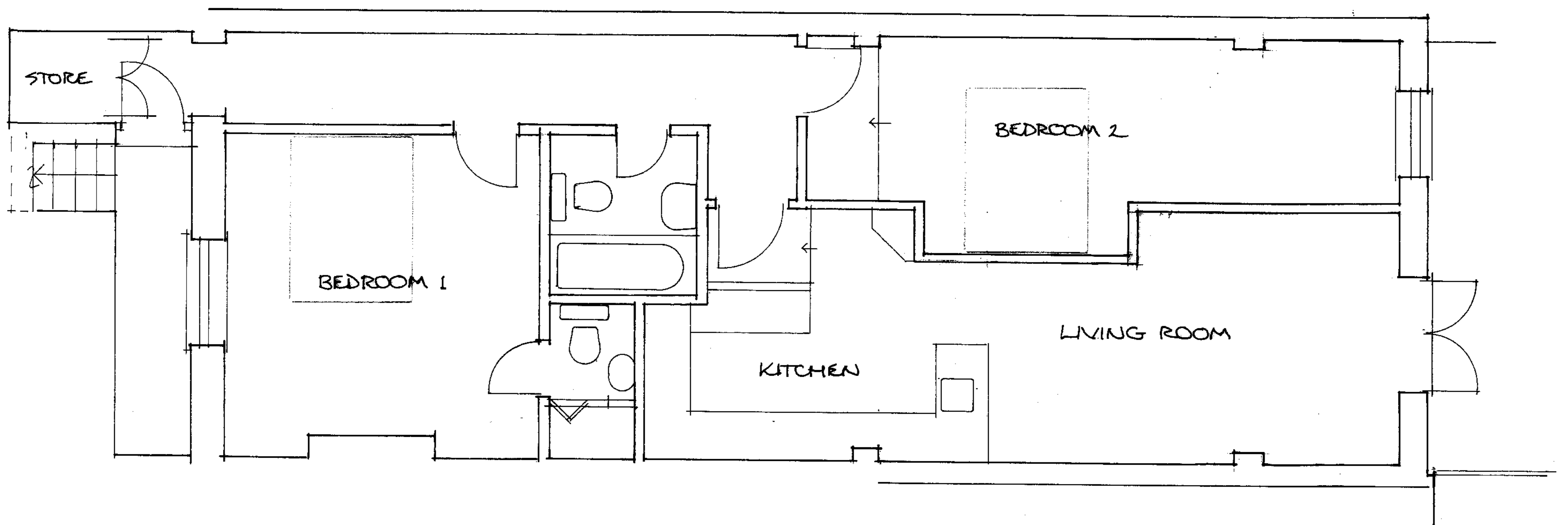


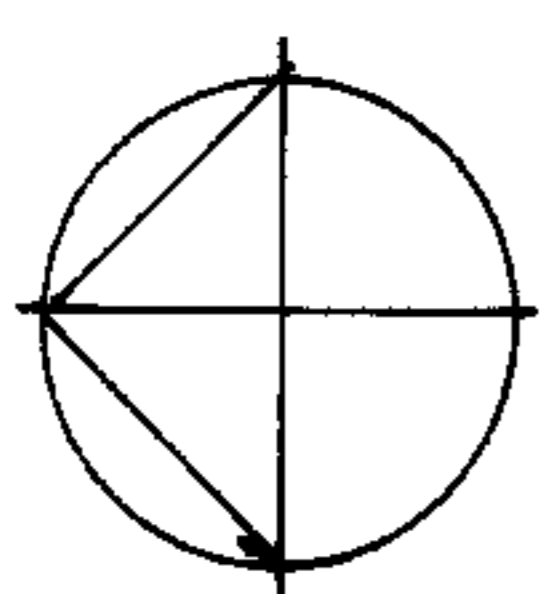
FIRST FLOOR PLAN
FLAT 3: 90 M²



UPPER GROUND FLOOR PLAN
FLAT 2: 47.1 M²



LOWER GROUND FLOOR PLAN
FLAT 1: 66 M²



REDMOND IVIE ARCHITECTS
THE BARLEY MOW CENTRE
10 BARLEY MOW PASSAGE
LONDON W4 4PH
TEL: 020 8994 6477 TEL/FAX: 020 8742 17
e-mail rcivie@btconnect.com
www.redmondvie.com

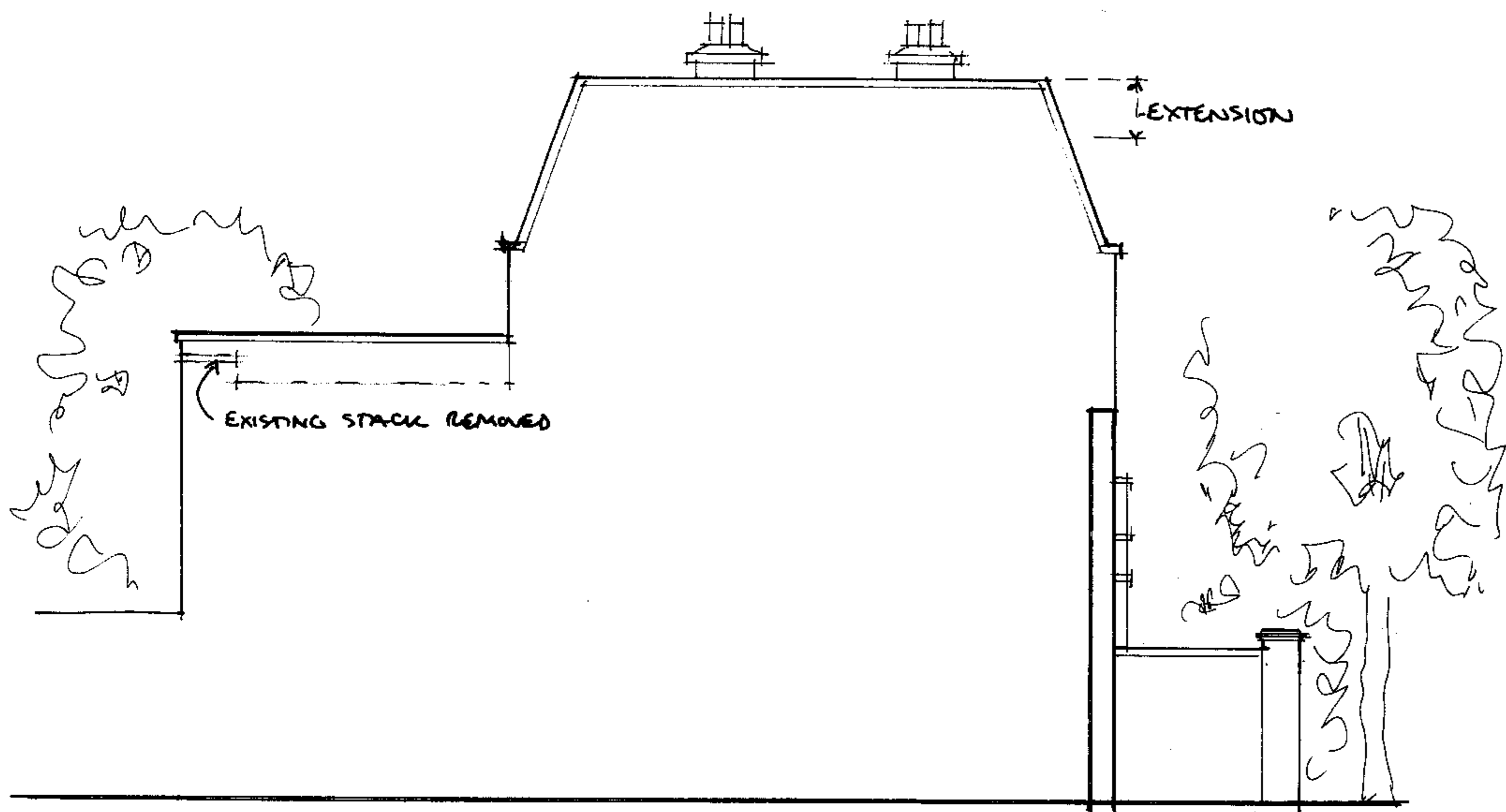
CONVERSION AND
EXTENSIONS TO
33 RHYL ST. NWS

PROPOSED PLANS

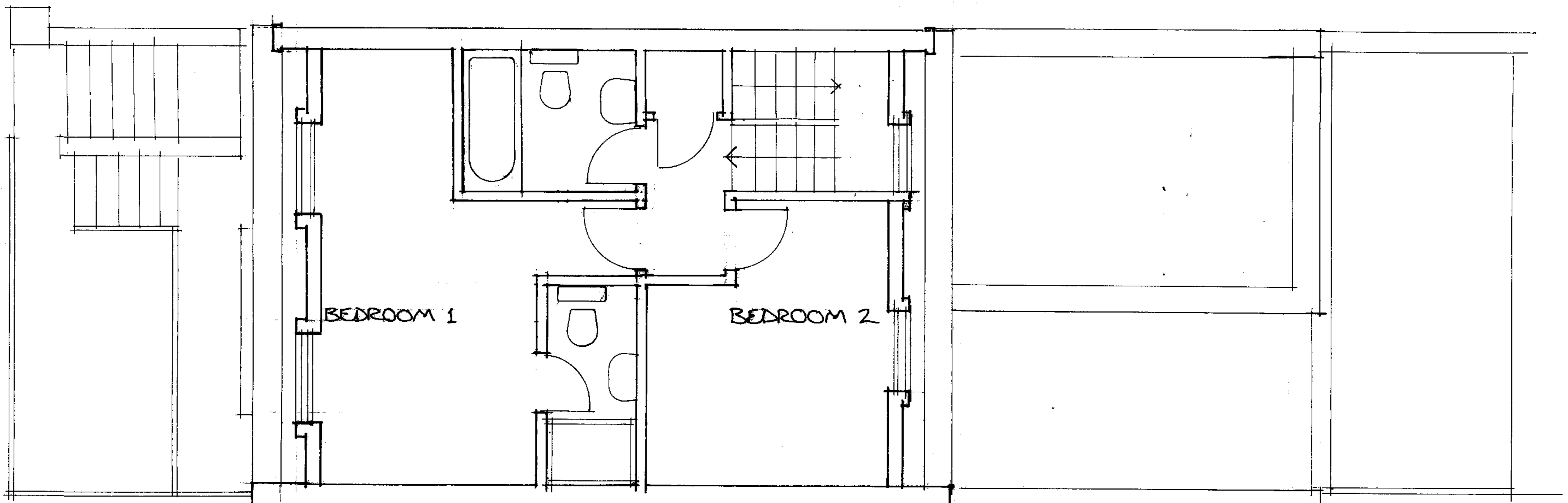
SCALE 1:50
DATE OCT 07
DRAWN BY RCE

597/12

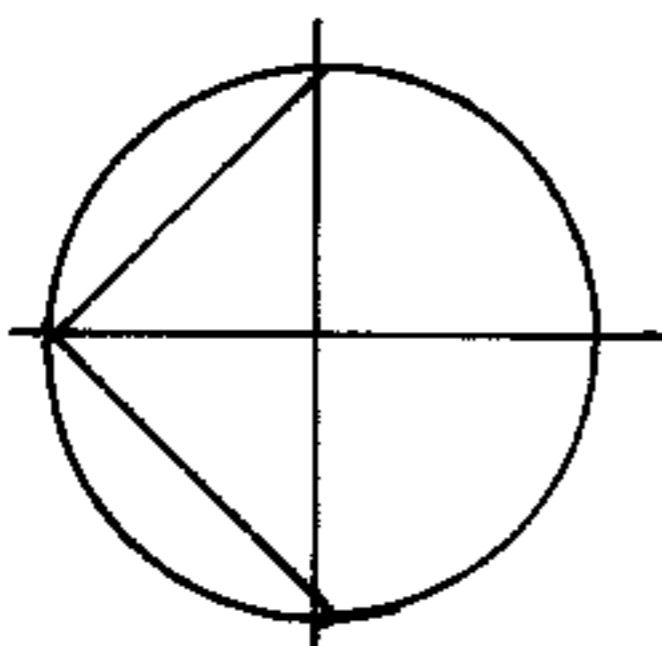
DO NOT SCALE FOR CONSTRUCTION
VERIFY ALL DIMENSIONS ON SITE



EAST ELEVATION 1:100



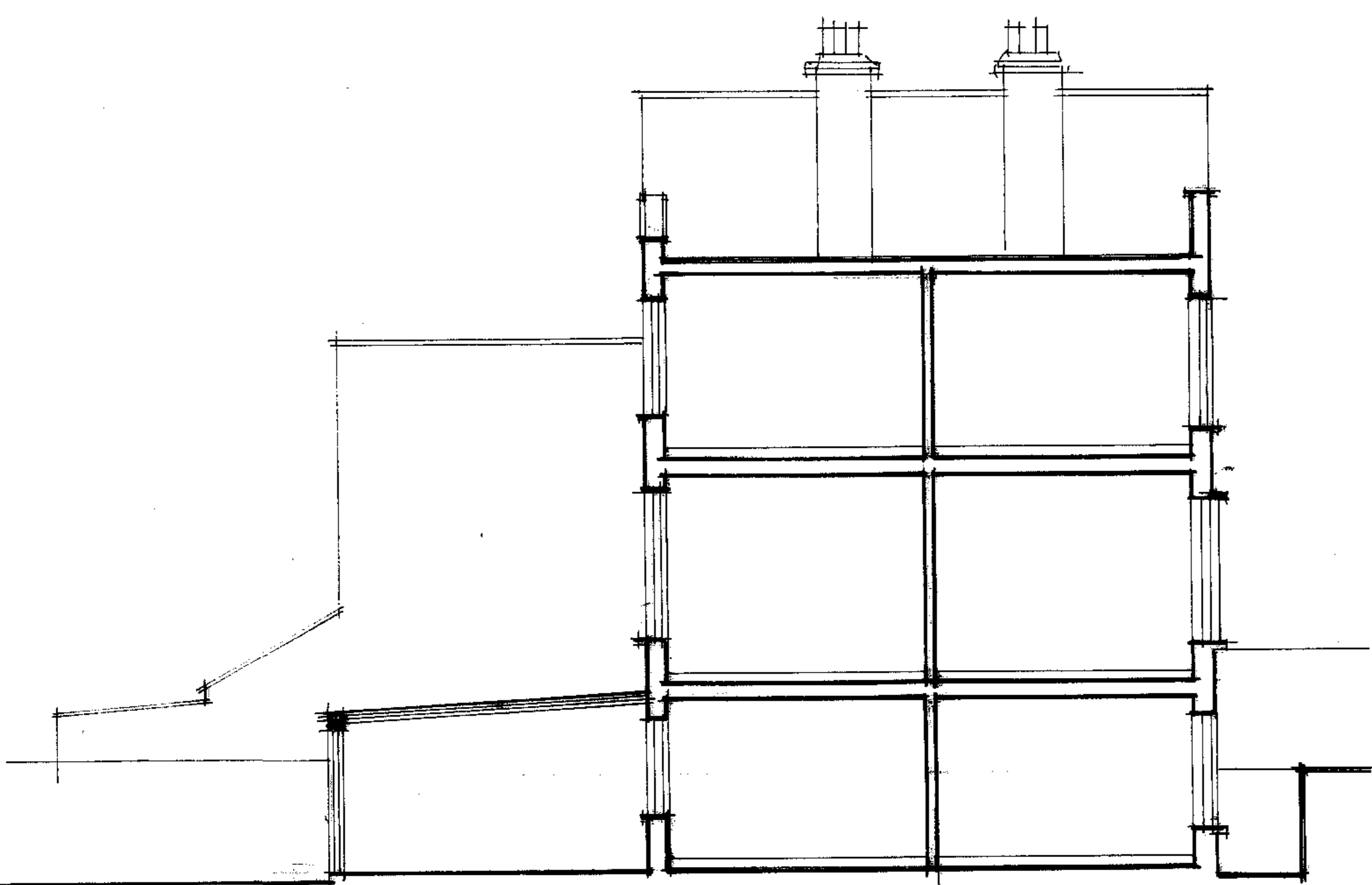
SECOND FLOOR PLAN 1:50
FLAT 3 UPPER FLOOR



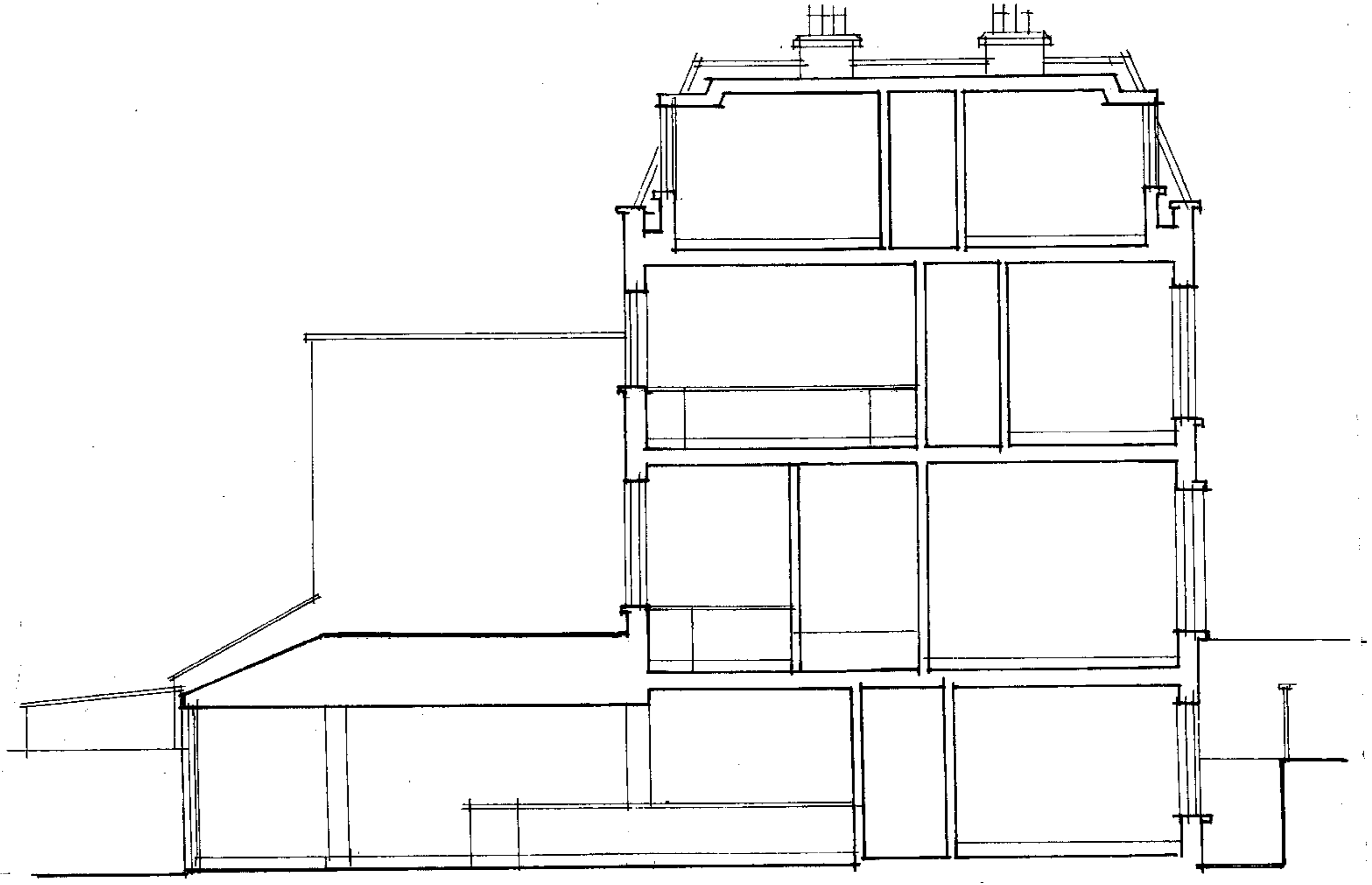
REDMOND IVIE ARCHITECTS
THE BARLEY MOW CENTRE
10 BARLEY MOW PASSAGE
LONDON W4 4PH
TEL: 020 8994 6477 TEL/FAX: 020 8742 1775
e-mail rcivie@btconnect.com
www.redmondivie.com

EXTENSIONS AND CONVERSION OF 33 RHYE ST. NWS	
PROPOSED PLAN AND ELEVATION	
SCALE 1:50, 1:100	S97/13
DATE OCT. 07	
DRAWN BY RCE	

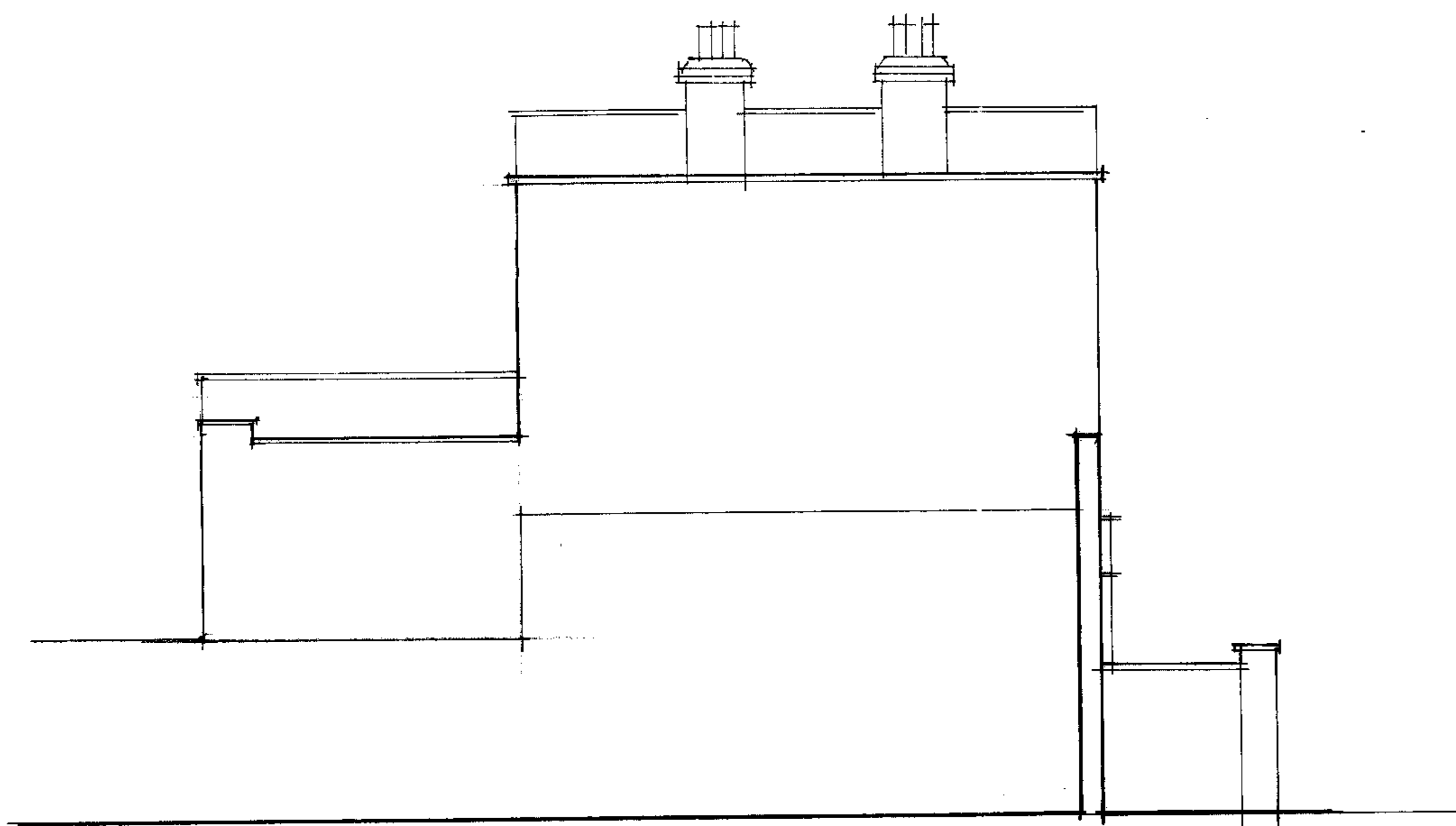
DO NOT SCALE FOR CONSTRUCTION
VERIFY ALL DIMENSIONS ON SITE



SECTION AA EXISTING



SECTION AA PROPOSED



EXISTING EAST ELEVATION

REDMOND IVIE ARCHITECTS
 THE BARLEY MOW CENTRE
 10 BARLEY MOW PASSAGE
 LONDON W4 4PH
 TEL: 020 8994 6477 TEL/FAX: 020 8742 1775
 e-mail rciwie@btconnect.com
 www.redmondvie.com

EXTENSIONS AND CONVERSION OF 33 RHYE ST. NW 5	
SECTIONS AND ELEVATION	
SCALE 1:100	S917/14
DATE Oct. 07	
DRAWN BY RZCE	

DO NOT SCALE FOR CONSTRUCTION
 VERIFY ALL DIMENSIONS ON SITE



SOUTH ELEVATION



NORTH ELEVATION

REDMOND IVIE ARCHITECTS
 THE BARLEY MOW CENTRE
 10 BARLEY MOW PASSAGE
 LONDON W4 4PH
 TEL: 020 8994 6477 TEL/FAX: 020 8742 1775
 e-mail rcivie@btconnect.com
 www.redmondvie.com

EXTENSIONS AND
 CONVERSION OF
 33 RHYL ST. NWS

PROPOSED
 ELEVATIONS

SCALE 1:50	S97/15
DATE OCT 07	
DRAWN BY RCI	

DO NOT SCALE FOR CONSTRUCTION
 VERIFY ALL DIMENSIONS ON SITE