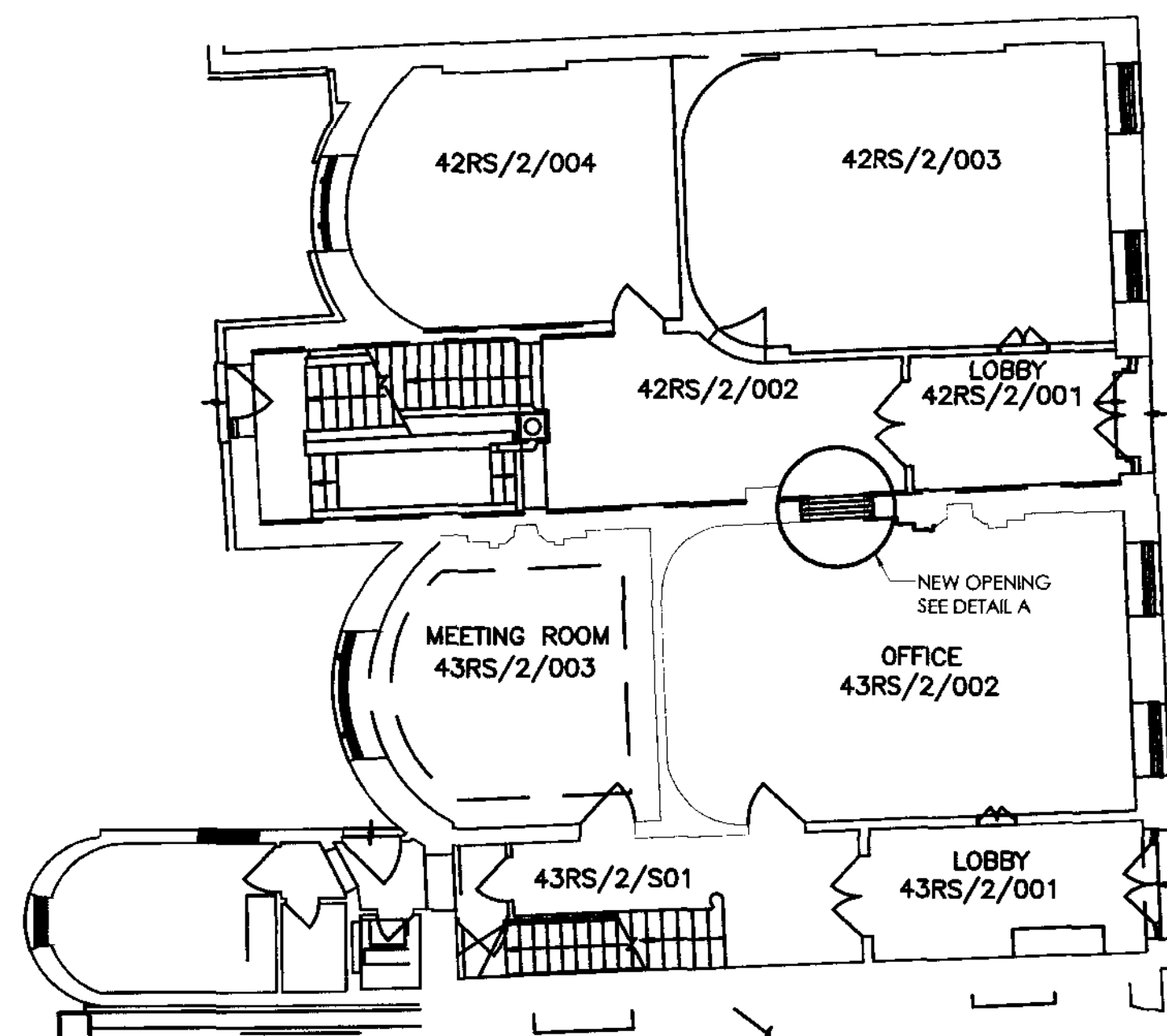


DO NOT SCALE THIS DRAWING

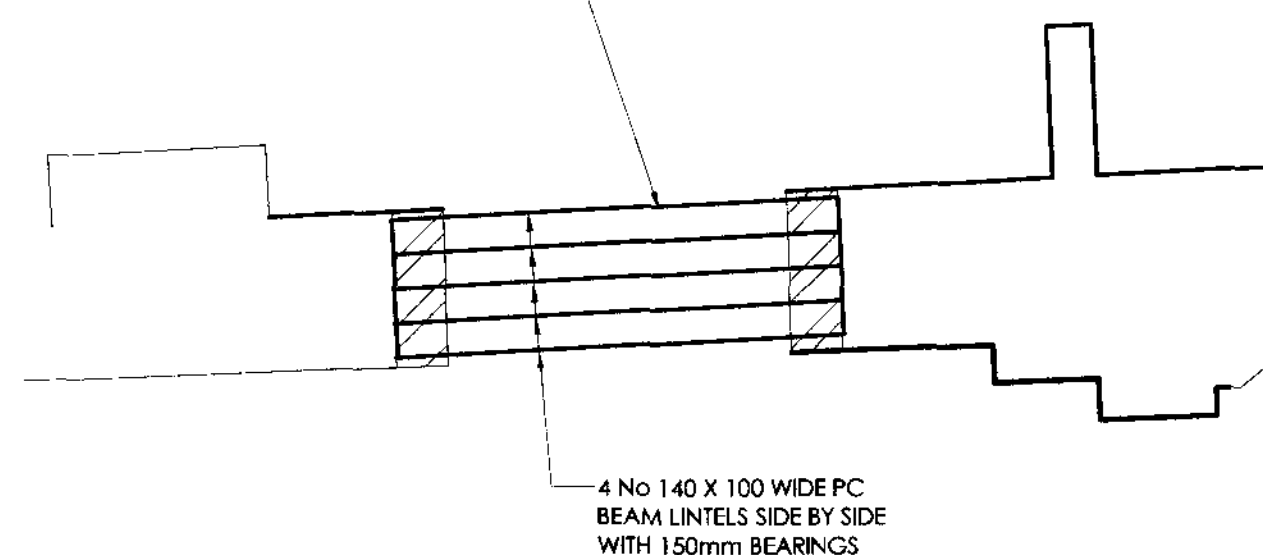
GENERAL NOTES

1. READ IN CONJUNCTION WITH ALL RELEVANT ARCHITECTS AND ENGINEERS DRAWINGS.
2. ANY VOIDS OVER THE NEW PC LINTEL ARE TO BE DRY PACKED WITH HAND DAMP MORTAR, 1:3 CEMENT, SHARP SAND MIX, RAMMED WELL HOME.



PROPOSED GROUND  
FLOOR PLAN  
1:100

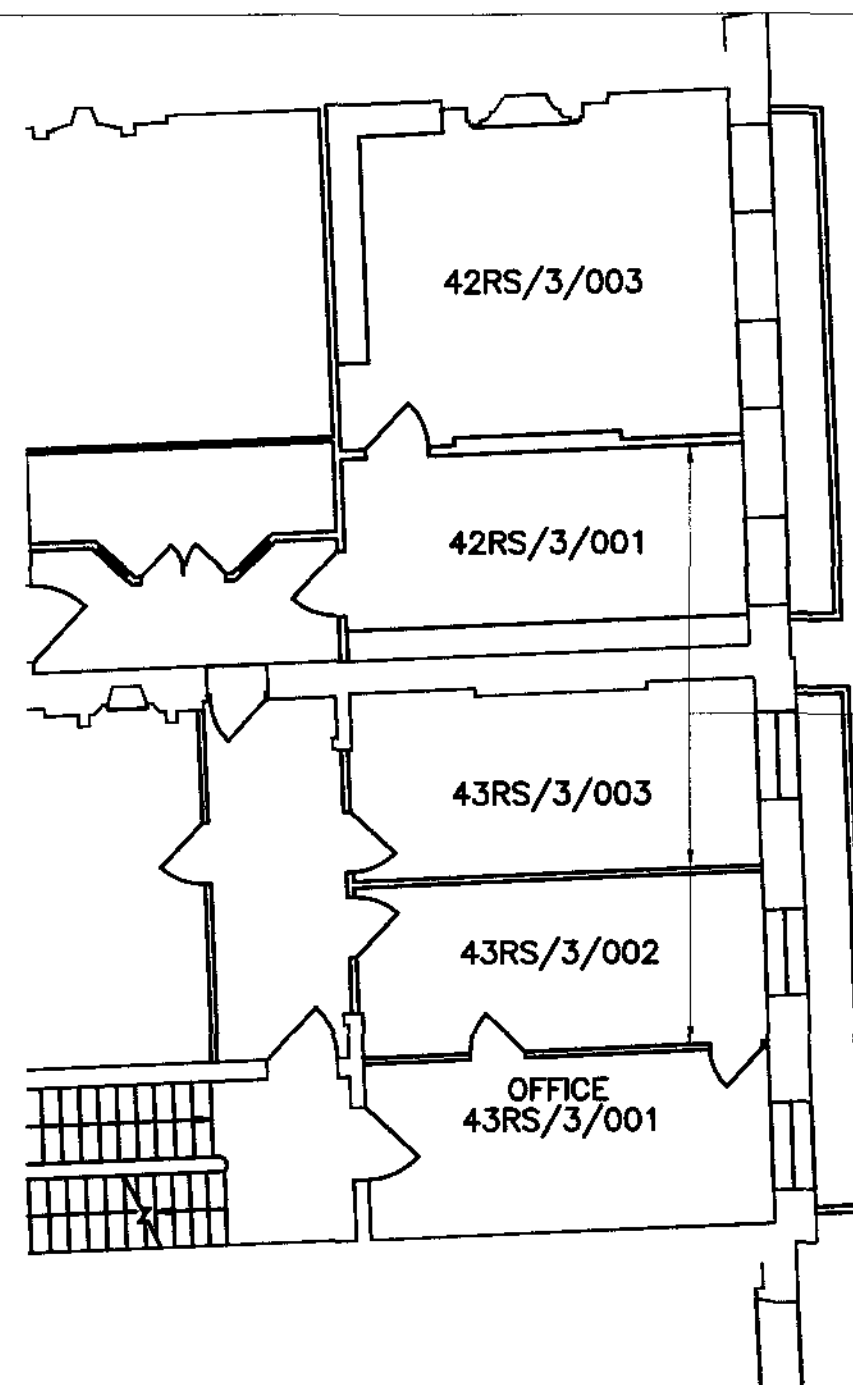
CAREFULLY FORM NEW 1000  
WIDE OPENING IN THIS WALL



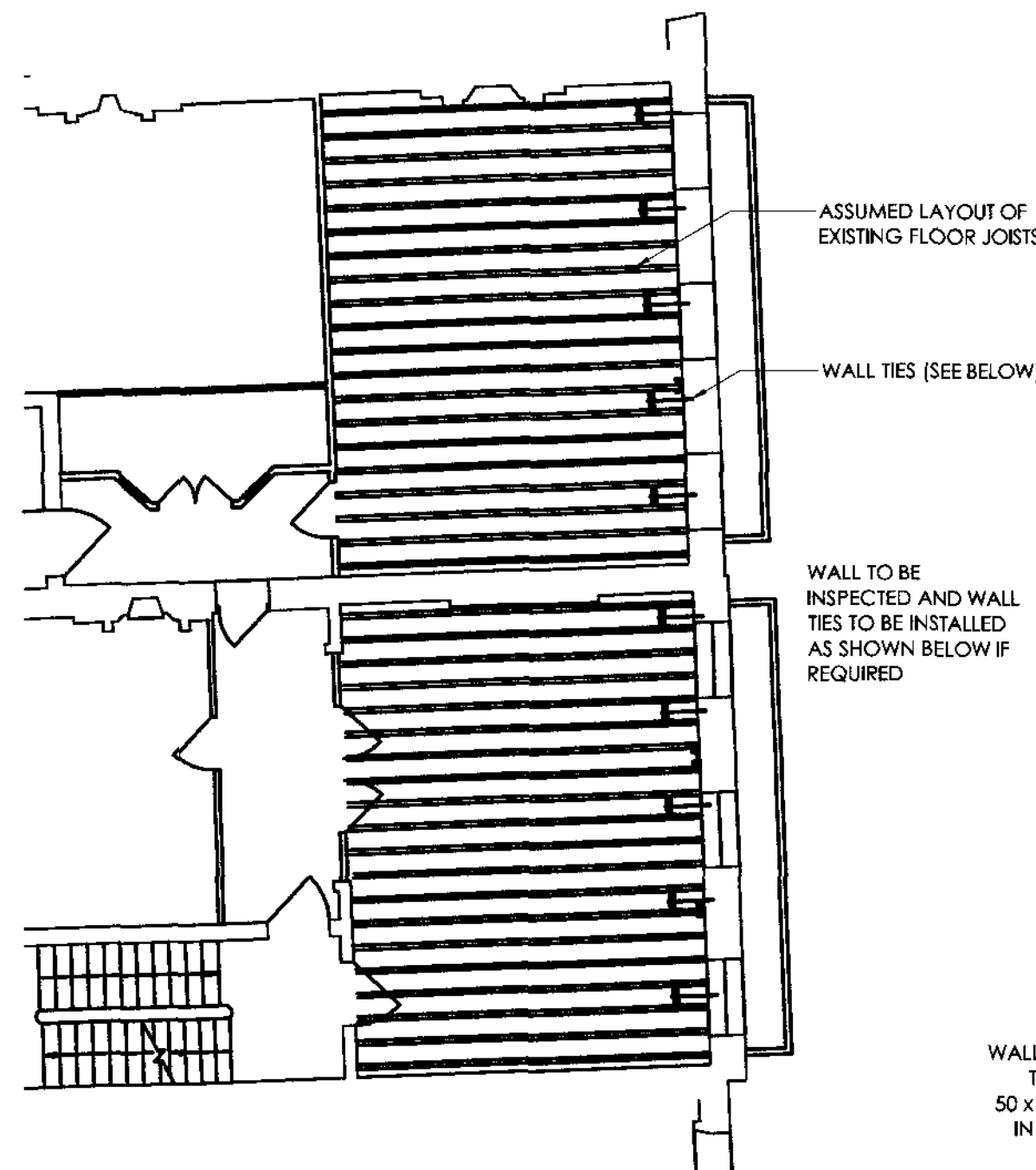
DETAIL A  
1:20

rev	description	date
<b>Hockley &amp; Dawson</b> Telephone 01483 - 548784 Facsimile 01483 - 268765 E-mail admin@hockleyanddawson.co.uk Internet www.hockleyanddawson.co.uk Consulting Engineers Hockley & Dawson Consulting Engineers Limited The Great Barn Smithbrook Barns Cranleigh Surrey GU8 8LH		
project <b>BRITISH MUSEUM PROPOSED ALTERATIONS @ 42/43 RUSSELL SQUARE</b>		
drawing title <b>NEW OPENING IN WALL AT GROUND FLOOR LEVEL</b>		
COPYRIGHT		
date MARCH '06	scale 1:100, 1:20	@A2
job no. 14155	drg. no. 2/03	rev

RECEIVED  
9 NOV 2007

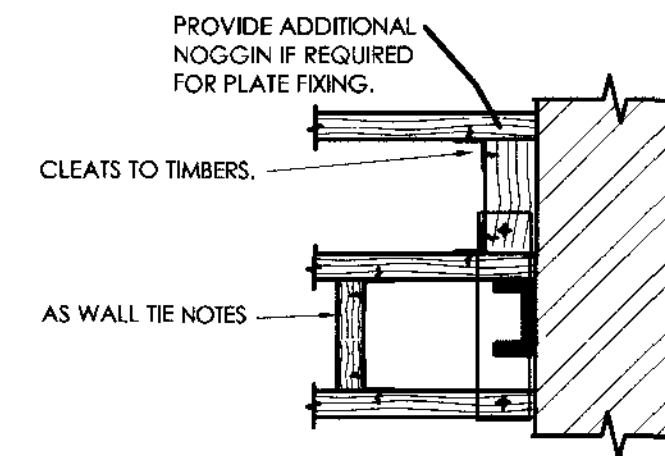


**FIRST FLOOR EXISTING**  
1:100

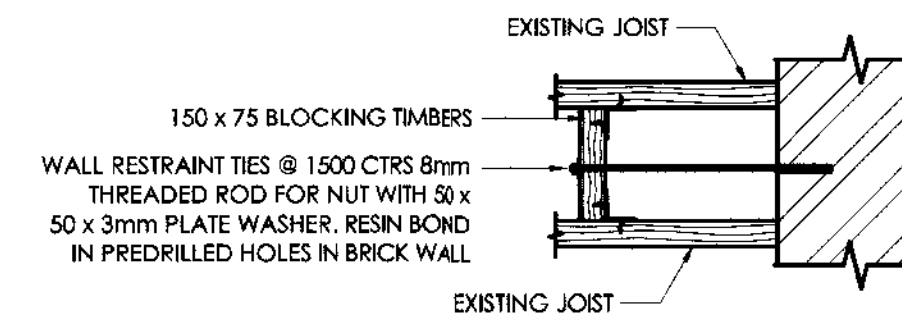


**FIRST FLOOR PROPOSED**  
1:100

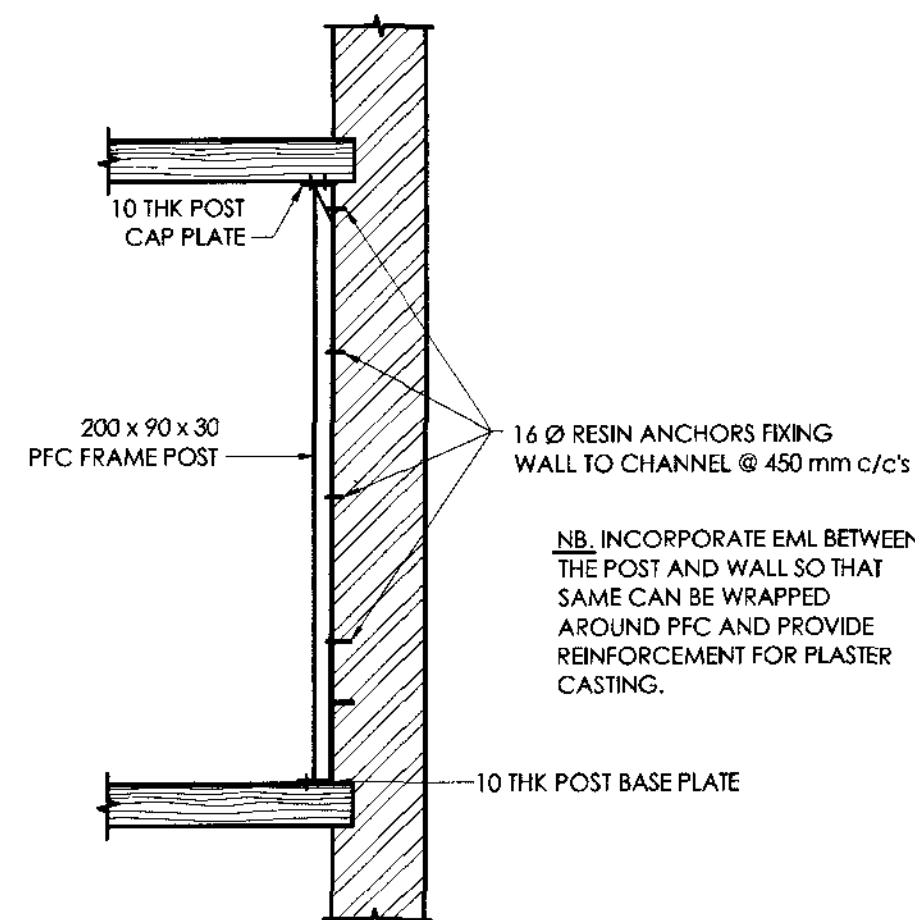
**DO NOT SCALE THIS DRAWING**  
GENERAL NOTES  
1. READ WITH ALL RELEVANT ARCHITECTS AND ENGINEERS DRAWINGS.



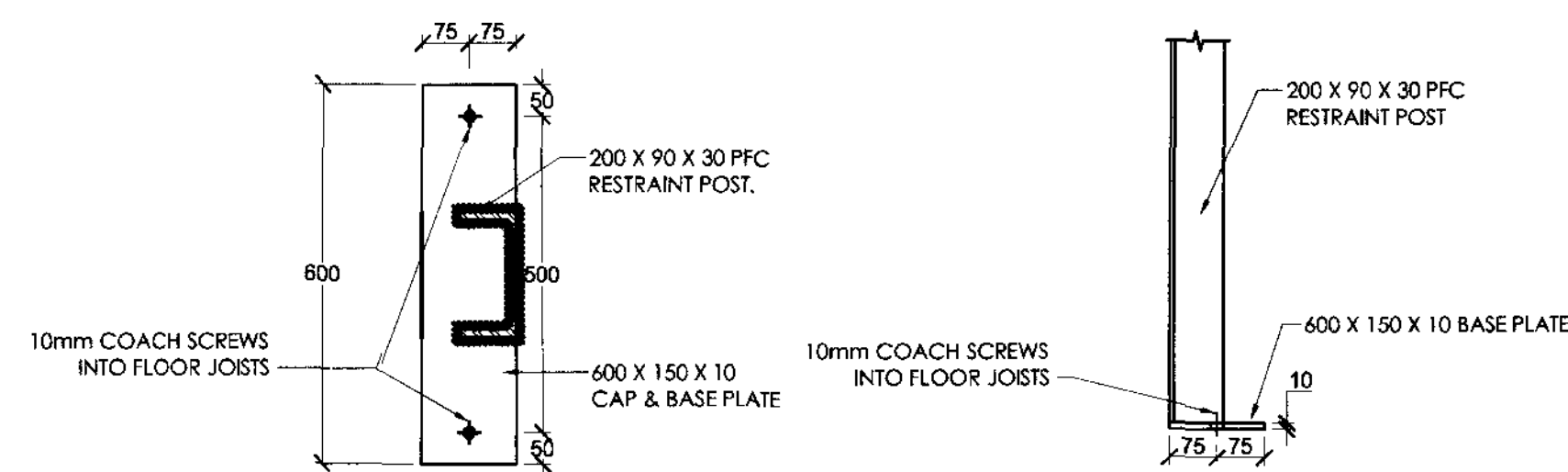
**PFC FIXING**  
1:20



**WALL TIES**  
1:20



**WALL RESTRAINING POST**  
nts



**CAP & BASE PLATE CONNECTION**  
1:10

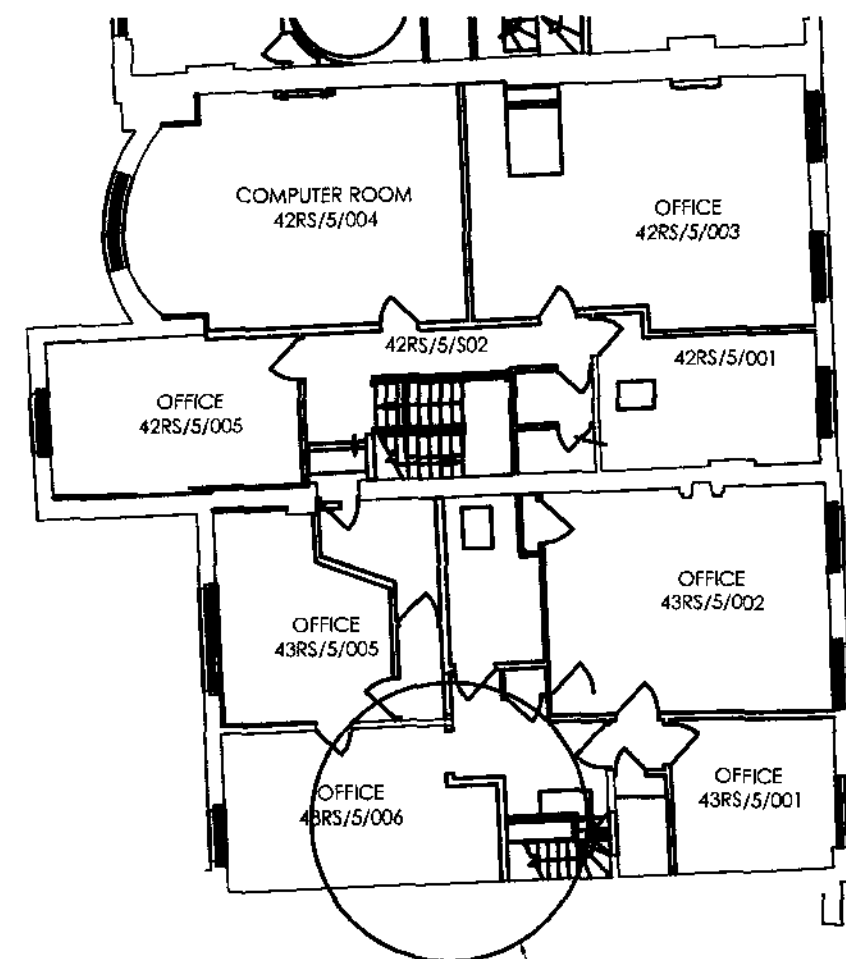
rev	description	date
<b>Hockley &amp; Dawson</b> Telephone 01483 - 548784 Facsimile 01483 - 268765 E-mail admin@hockleyanddawson.co.uk Internet www.hockleyanddawson.co.uk Consulting Engineers Hockley & Dawson Consulting Engineers Limited The Great Barn Smithbrook Barns Cranleigh Surrey GU6 8LH		
project <b>BRITISH MUSEUM PROPOSED ALTERATIONS @ 42/43 RUSSELL SQUARE</b>		
drawing title <b>REMOVAL OF PARTITION WALLS AT FIRST FLOOR LEVEL</b>		
date MARCH '06 scale 1:100, 1:25, 1:10 @ A2 job no. 14155 dng. no. 2/04 rev		

**RECEIVED**  
09 NOV 2007

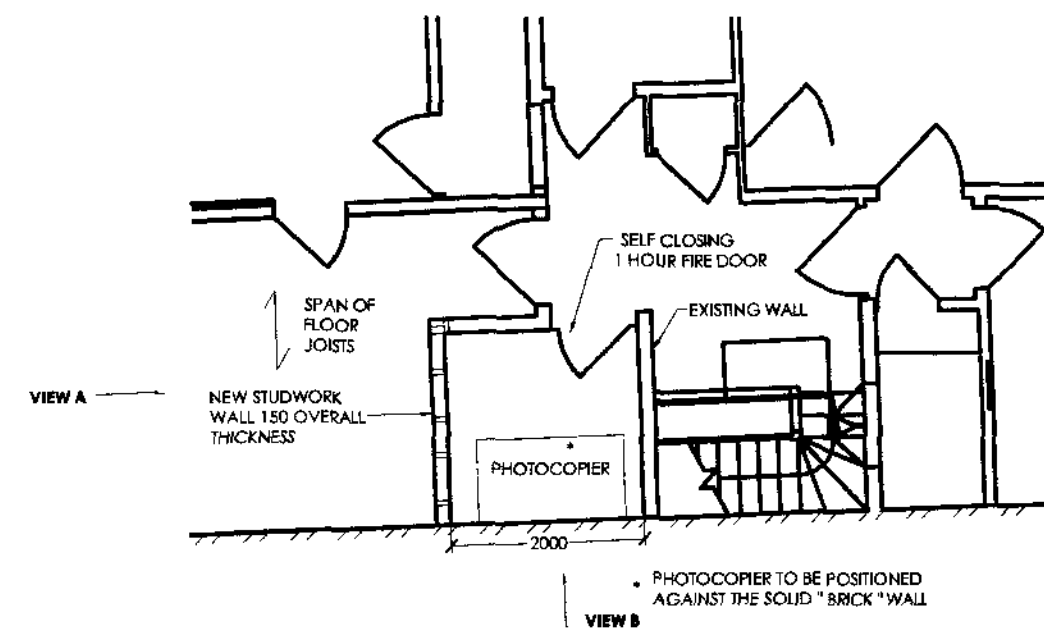
DO NOT SCALE THIS DRAWING

GENERAL NOTES

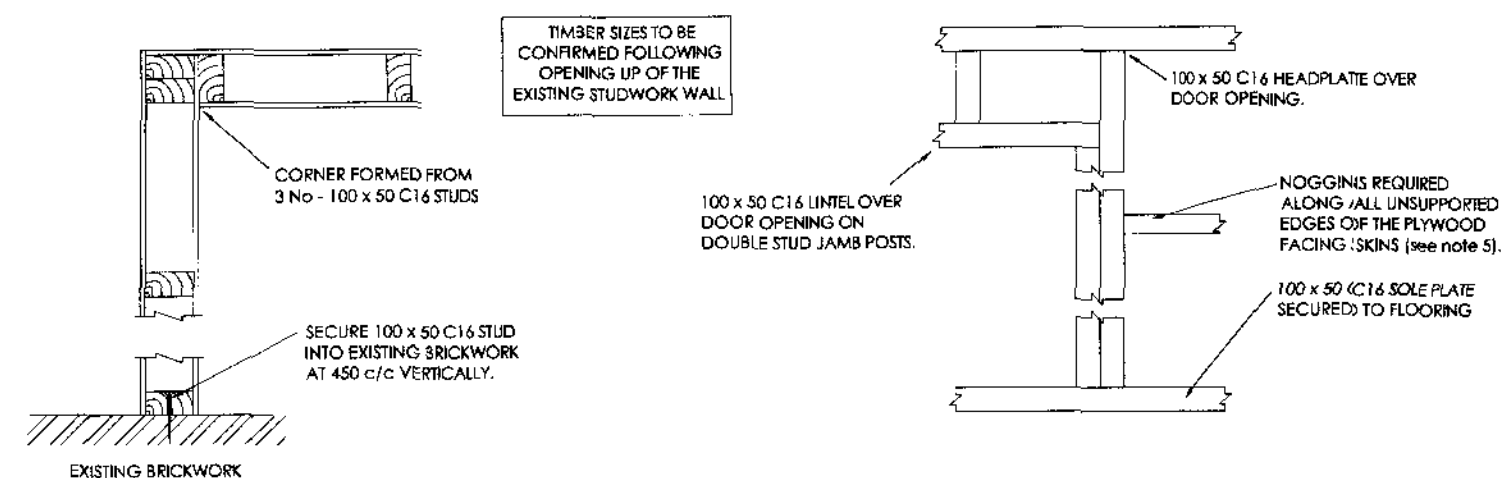
1. READ WITH ALL RELEVANT ARCHITECTS AND ENGINEERS DRAWINGS.
2. WALL PANELS TO BE BOLTED TOGETHER WITH 16 Ø SHERADISED BOLTS AND WASHERS AT 600 mm c/c ALONG TOUCHING STUDS.
3. INTERIOR PARTITIONS ARE TO BE FORMED OF 100 x 50 C16 STUDS AT 400 c/c WITH NOGGINS AND 100 X50 HEAD AND SOLE PLATES LAPPED OR TIED INTO THE EXTERNAL WALLS AT POINTS OF INTERSECTION.
4. STUDWORK WALLS TO BE CLAD IN 2 LAYERS OF 10mm PLASTERBOARD.
5. STAGGERED & TAPED JOINTS TO ACHIEVE ONE HOUR FIRE RESISTANCE.



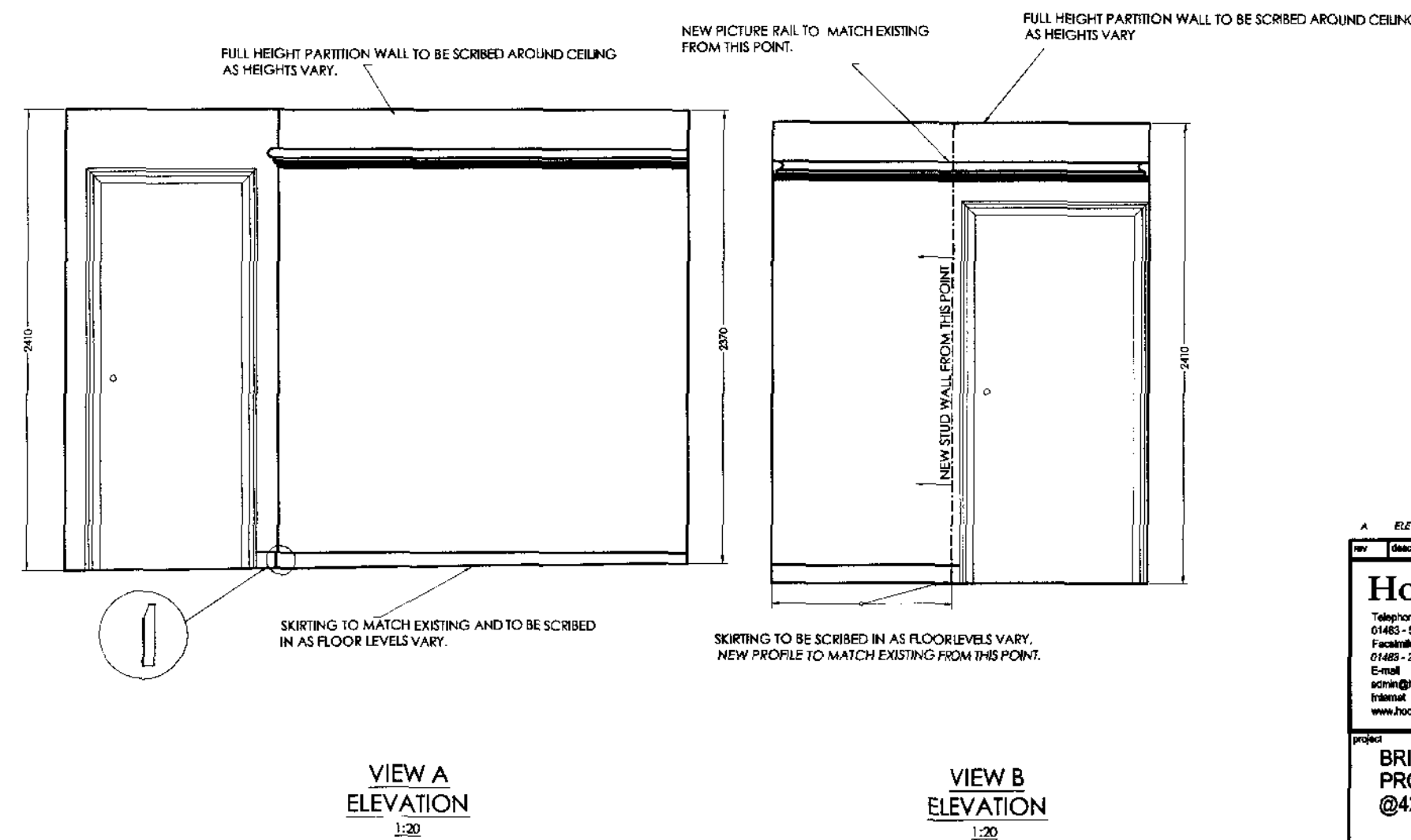
EXISTING THIRD FLOOR PLAN  
1:100



DETAIL D - PROPOSED ALTERATIONS  
1:50



TYPICAL STUDWORK DETAILS  
1:10

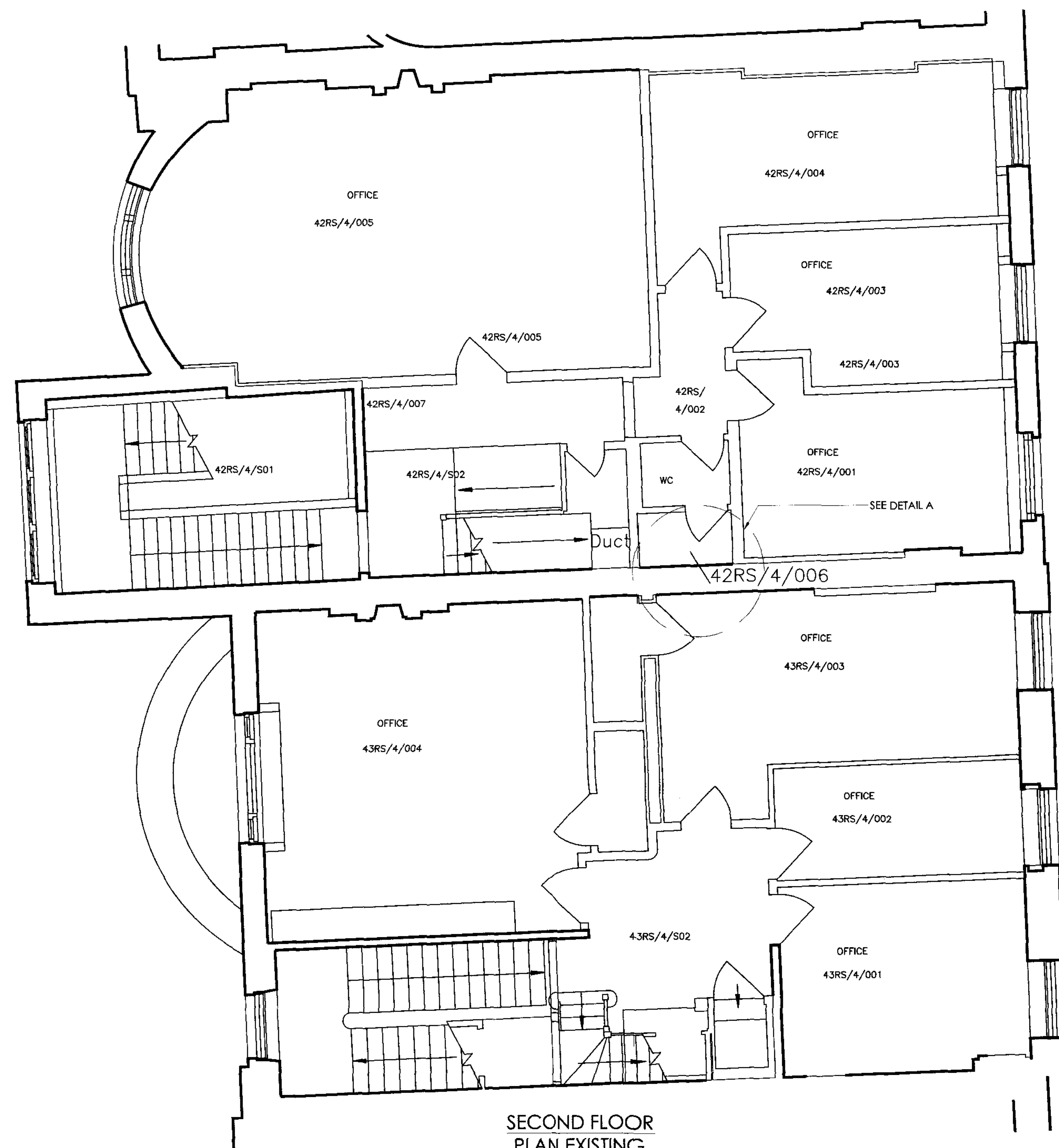


VIEW A  
ELEVATION  
1:20

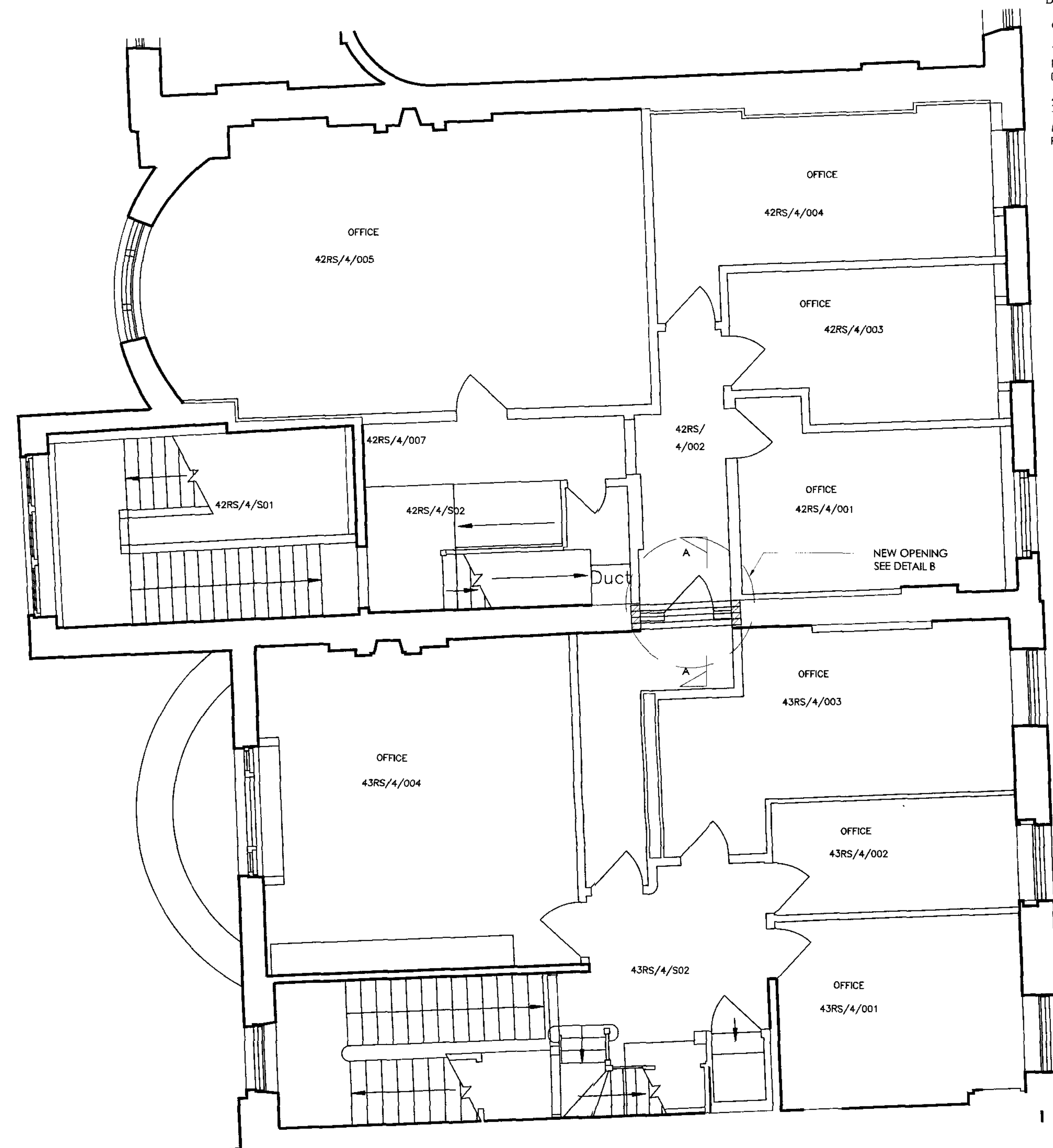
VIEW B  
ELEVATION  
1:20

A ELEVATIONS OF NEW WALLING ADDED		24.07.06
rev	description	date
<b>Hockley &amp; Dawson</b> Telephone: 01485 - 548784 Facsimile: 01485 - 268785 E-mail: <a href="mailto:scm@hockleyanddawson.co.uk">scm@hockleyanddawson.co.uk</a> Internet: <a href="http://www.hockleyanddawson.co.uk">www.hockleyanddawson.co.uk</a> Consulting Engineers Hockley & Dawson Consulting Engineers Limited The Great Barn Smithbrook Barns Cranleigh Surrey GU9 8LH		
project <b>BRITISH MUSEUM PROPOSED ALTERATIONS @42/43 RUSSELL SQUARE</b>		
drawing title <b>NEW PHOTOCOPIER ROOM ON THIRD FLOOR</b>		
date JULY 06	scale 1:100, 1:10, 1:20	copyright © COPYRIGHT
job no. 14155	dep. no. 1/06	rev A

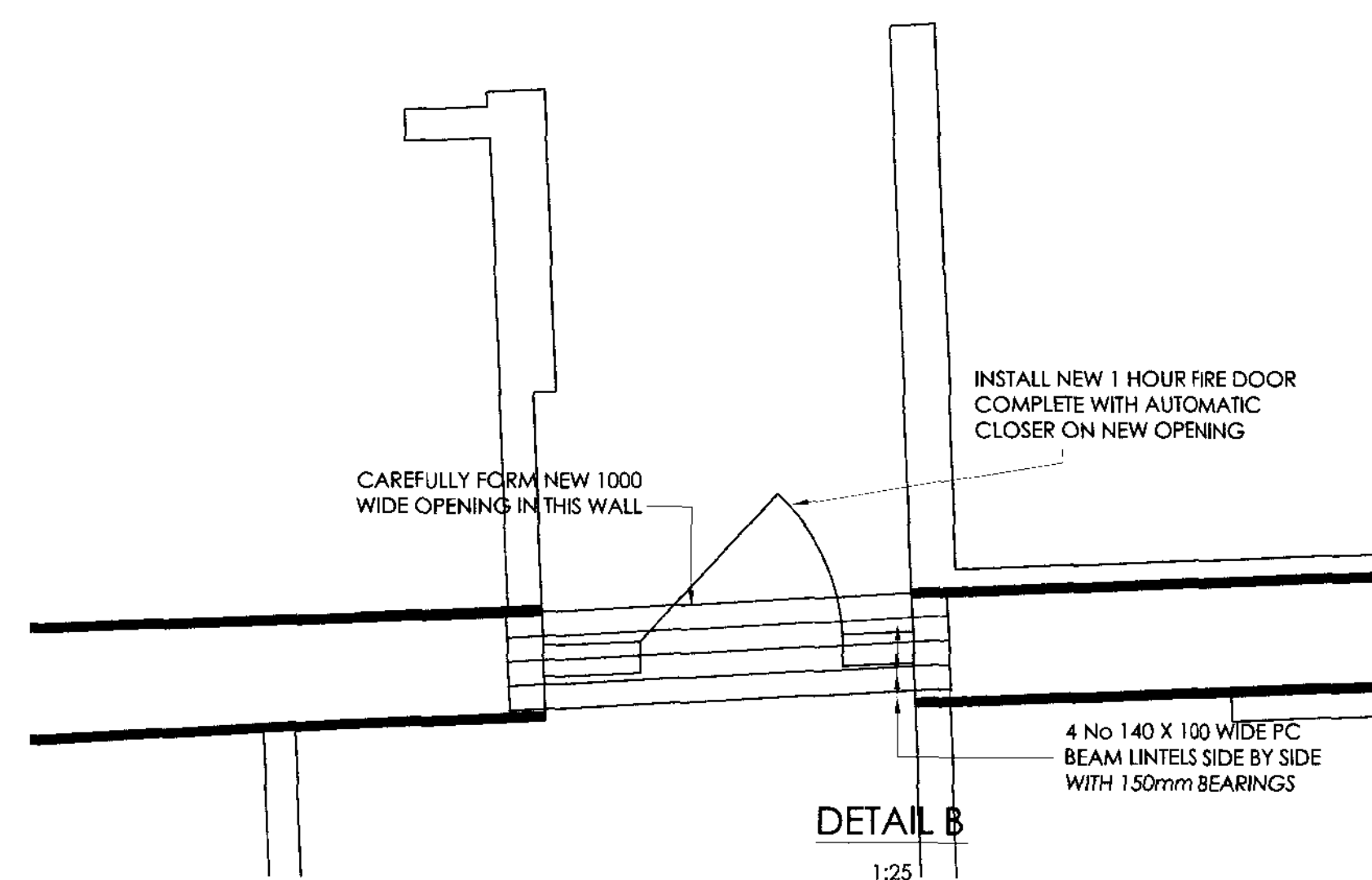
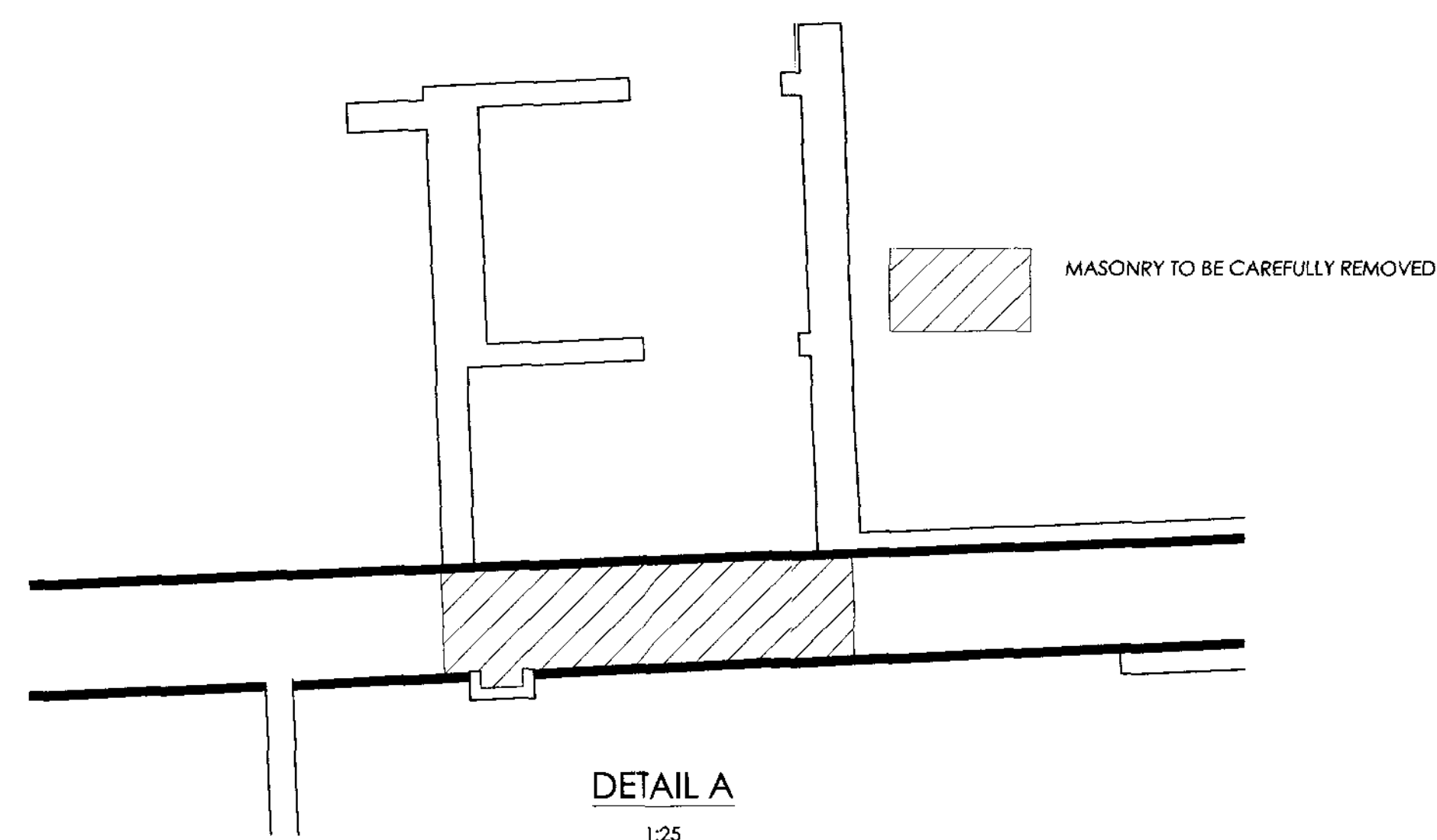
RECEIVED  
9 NOV 2007



SECOND FLOOR  
PLAN EXISTING



SECOND FLOOR  
PLAN PROPOSED



DO NOT SCALE THIS DRAWING

GENERAL NOTES

1. READ IN CONJUNCTION WITH ALL RELEVANT ARCHITECTS AND ENGINEERS DRAWINGS.
2. ANY VOIDS OVER THE NEW PC LINTEL ARE TO BE DRY PACKED WITH HAND DAMP MORTAR, 1:3 CEMENT, SHARP SAND MIX, RAMMED WELL HOME.

FOR SECTION A-A  
REFER TO DRG 3/03  
FOR ELEVATIONS  
REFER TO DRG 1/02

PRELIMINARY

A SECTION & ELEVATION REFERENCE ADDED 08.11.07

rev	description	date
1		

project

BRITISH MUSEUM  
42/43 RUSSELL SQUARE

drawing title

PROPOSED ALTERATIONS

date

scale

job no.

14725

1/01

A

**Hockley & Dawson**  
Consulting Engineers  
Telephone 01483 - 548784  
Facsimile 01483 - 268785  
E-mail admin@hockleyanddawson.co.uk  
Internet www.hockleyanddawson.co.uk  
Hockley & Dawson Consulting Engineers Limited  
The Great Barn  
Smithbrook Barns  
Cranleigh  
Surrey  
GU8 8LH

BRITISH MUSEUM  
42/43 RUSSELL SQUARE

drawing title

PROPOSED ALTERATIONS

date

scale

job no.

14725

1/01

A

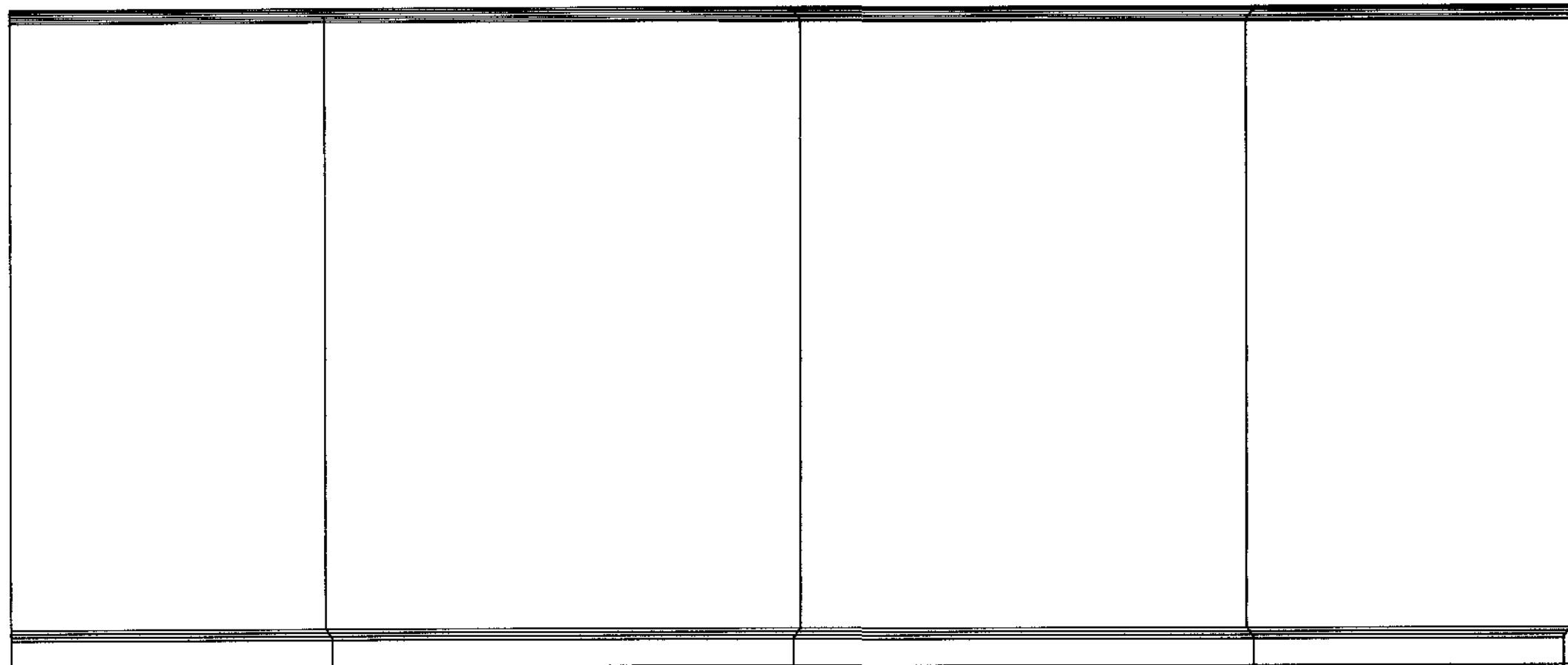
RECEIVED  
09 NOV 2007

DO NOT SCALE THIS DRAWING

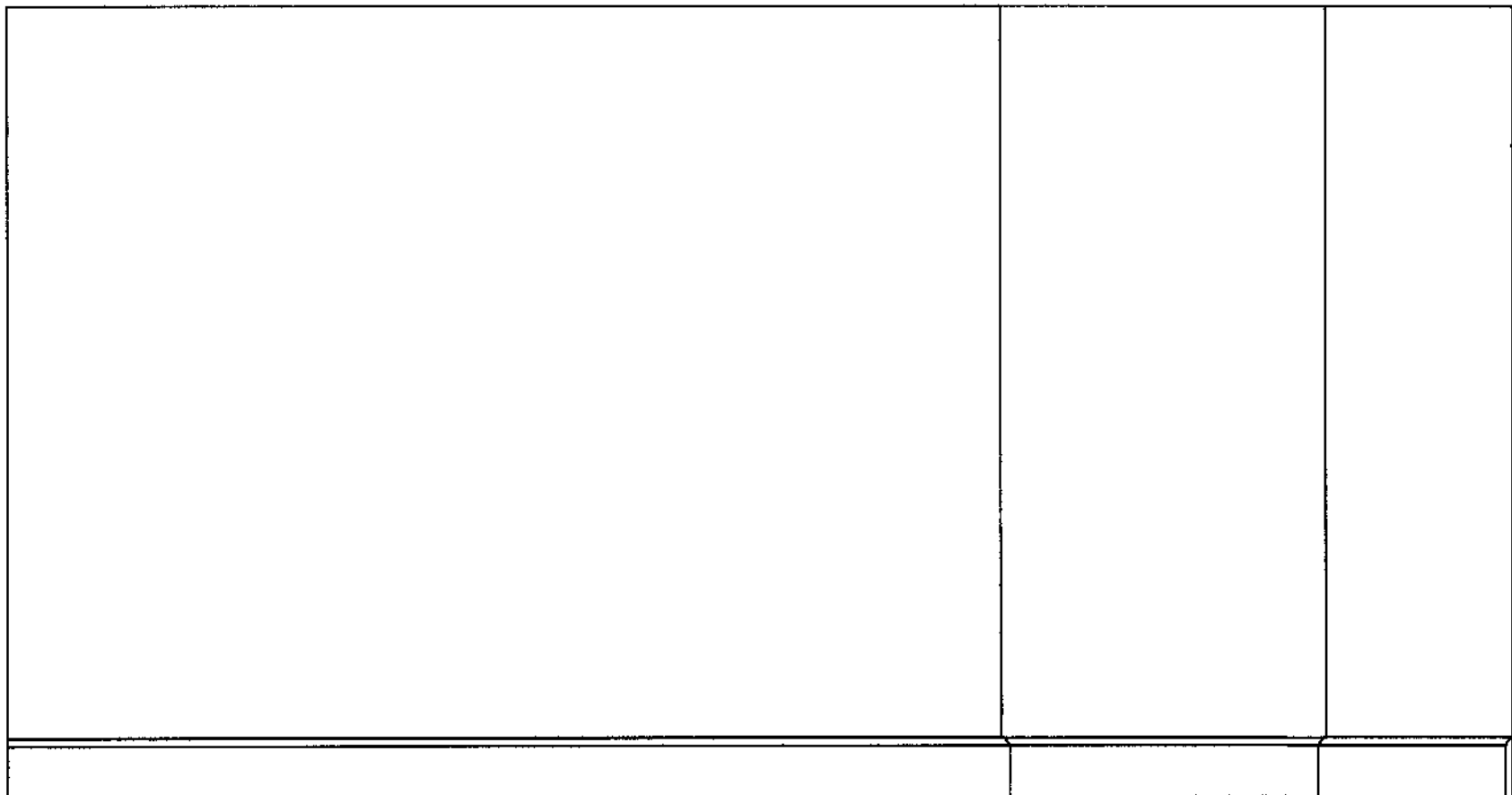
GENERAL NOTES

1. READ IN CONJUNCTION WITH ALL RELEVANT ARCHITECTS AND ENGINEERS DRAWINGS.

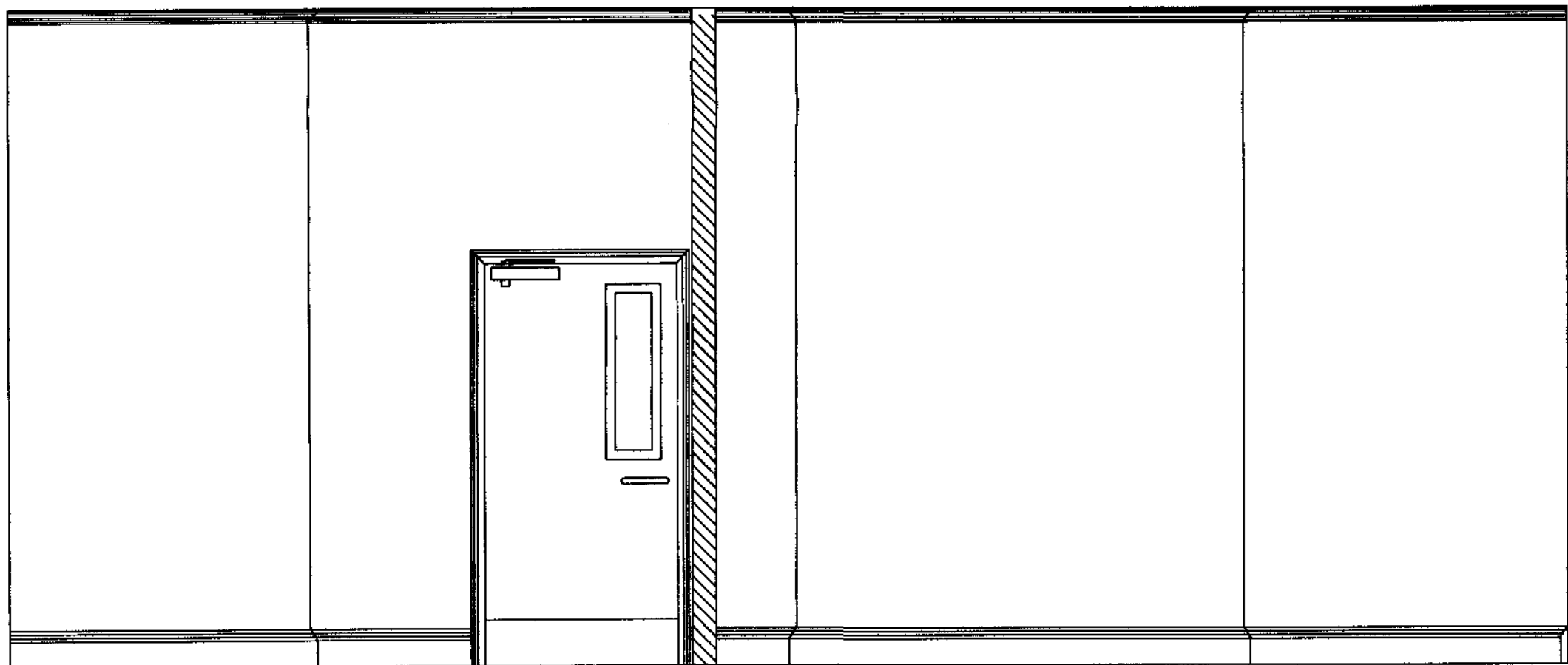
2. ANY VOIDS OVER THE NEW PC LINTEL ARE TO BE DRY PACKED WITH HAND DAMP MORTAR, 1:3 CEMENT, SHARP SAND MIX, RAMMED WELL HOME.



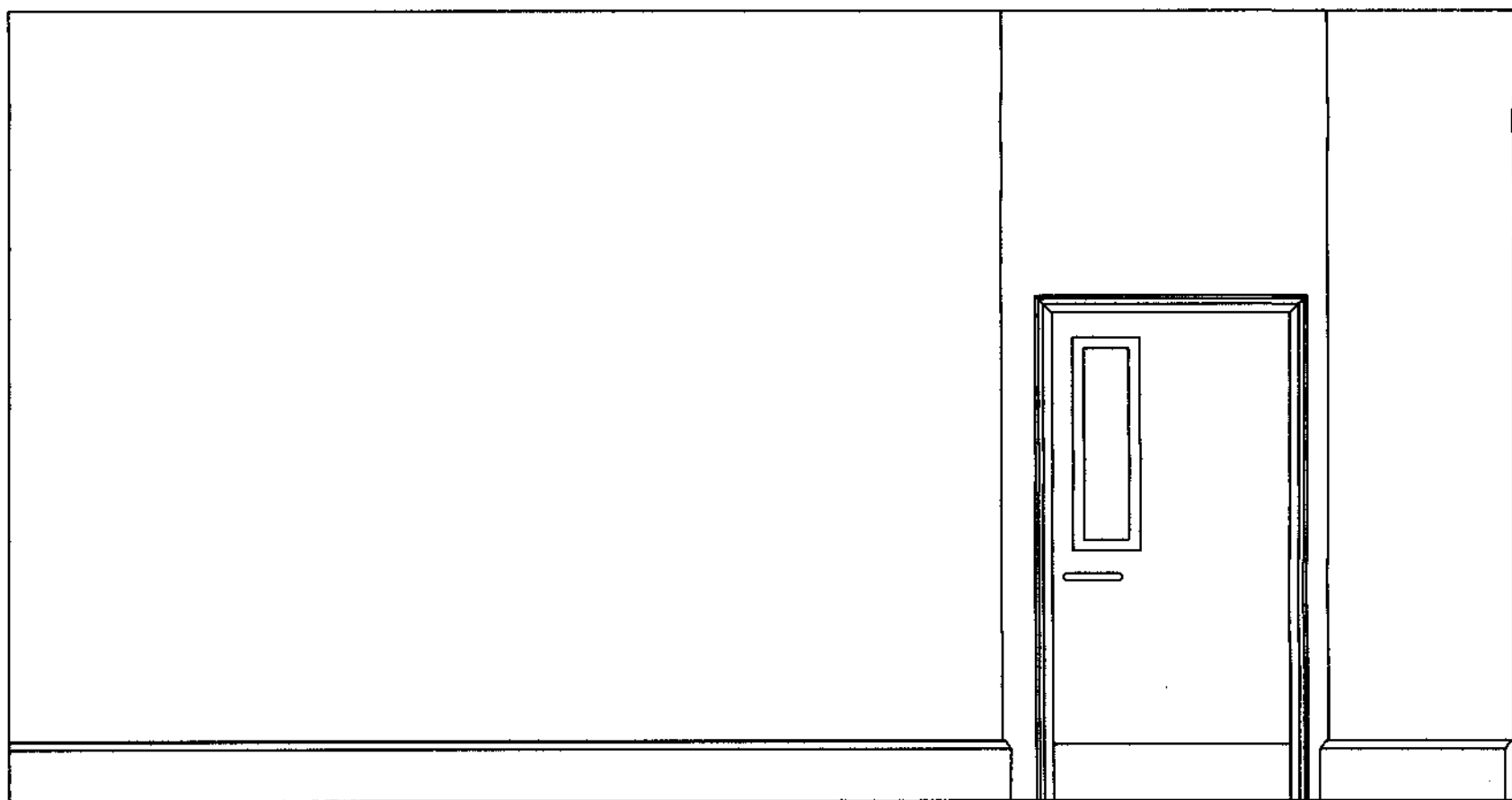
EXISTING ELEVATION 43RS SIDE



EXISTING ELEVATION 42RS SIDE



PROPOSED ELEVATION 43RS SIDE



PROPOSED ELEVATION 42RS SIDE

FOR DOOR DETAILS AND SECTIONS  
REFER TO DRG 3/03

PRELIMINARY

A GENERAL ALTERATIONS THROUGH OUT 08.11.07

rev	description	date
-----	-------------	------

**Hockley & Dawson**

Telephone 01483 - 548784 Facsimile 01483 - 288765 E-mail admin@hockleyanddawson.co.uk Internet www.hockleyanddawson.co.uk	Consulting Engineers Hockley & Dawson Consulting Engineers Limited The Great Barn Smithbrook Barns Cranleigh Surrey GU6 8LH
--	--

project  
BRITISH MUSEUM  
42/43 RUSSELL SQUARE

drawing title  
PROPOSED ALTERATIONS  
ELEVATIONS

date OCTOBER 2007	scale 1:25 @ A1
job no. 14725	drg. no. rev 1/02 A