

1  
G008P

Proposed Basement Level

2  
G008P

Proposed Ground Floor

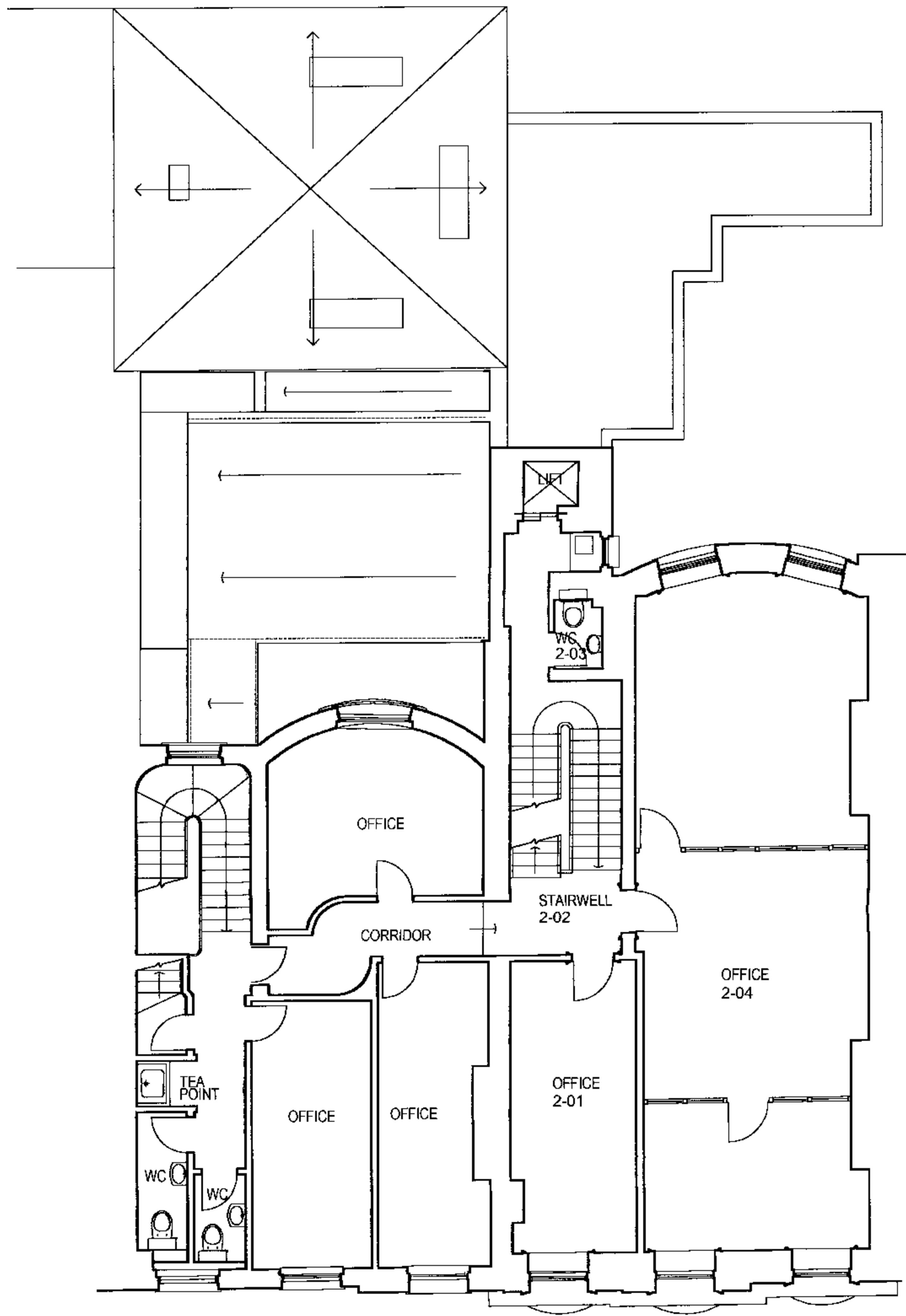
3  
G008P

Proposed First Floor

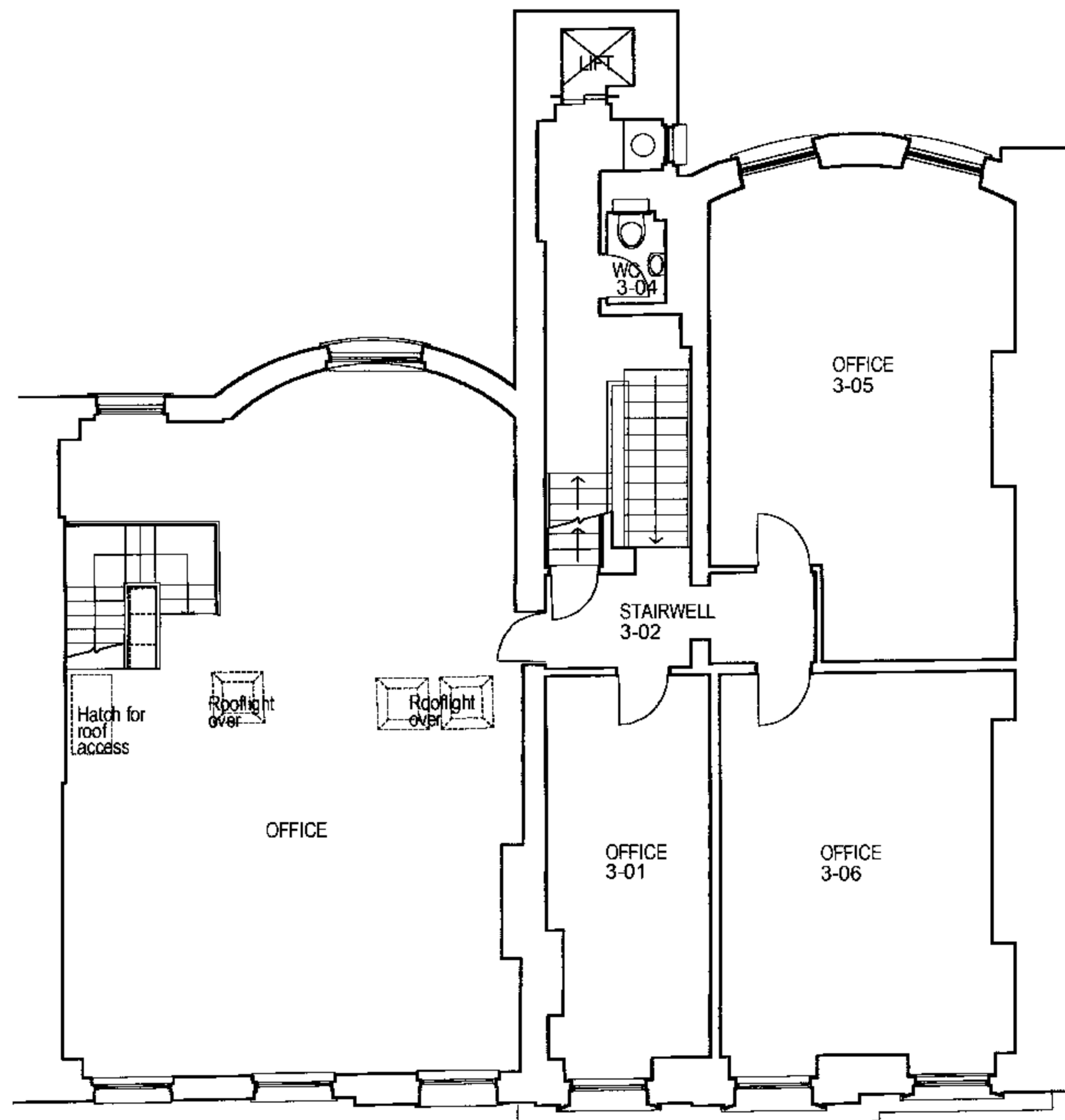
Revision notes:	Revision notes:

148 curtain road london EC2A 3AR / t: 020 7729 0770 / f: 020 7729 0778 / e: mail@fluidoffice.com		RUD	
general notes:	project: 10 FITZROY SQUARE & 46 FITZROY STREET		
	drawing title: Proposed Basement, Ground & First Floor Plans		
	purpose of drawing: PLANNING		
	dwg no: 1280_G008P		revision:
	scale: 1:100 @ A1, 1:200 @ A3		date: 08.10.07
	drawn by: JM		checked by: CE

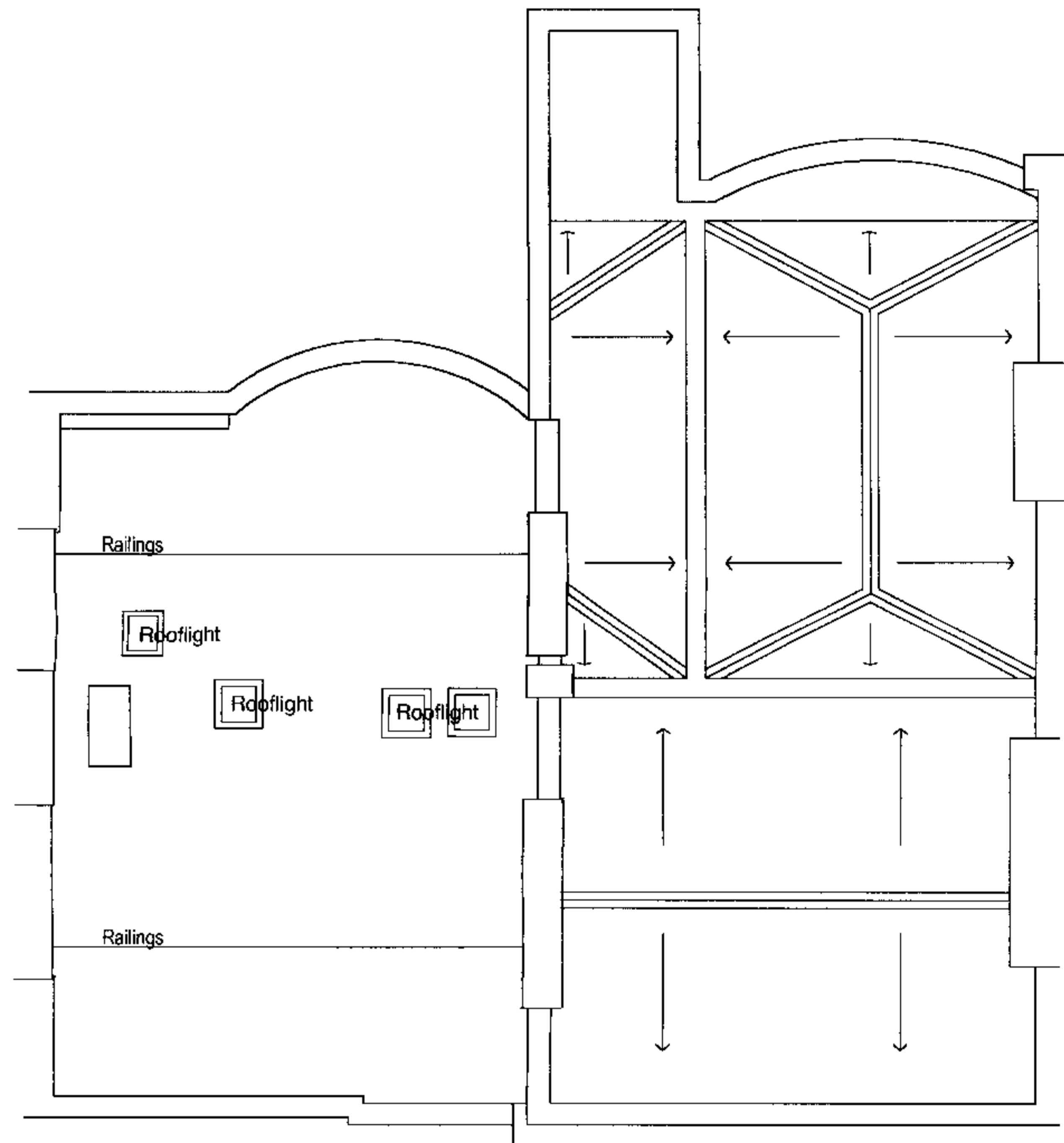
This drawing and the details contained herein are copyright and are not to be reproduced without the permission of Fluid Design Ltd. All dimensions relating to actual site conditions are to be checked on site prior to any works being commissioned or executed. Contractors are not to scale from this drawing and should refer any query in respect of dimension to the Architects.



1  
G009P  
Proposed Second Floor Plan

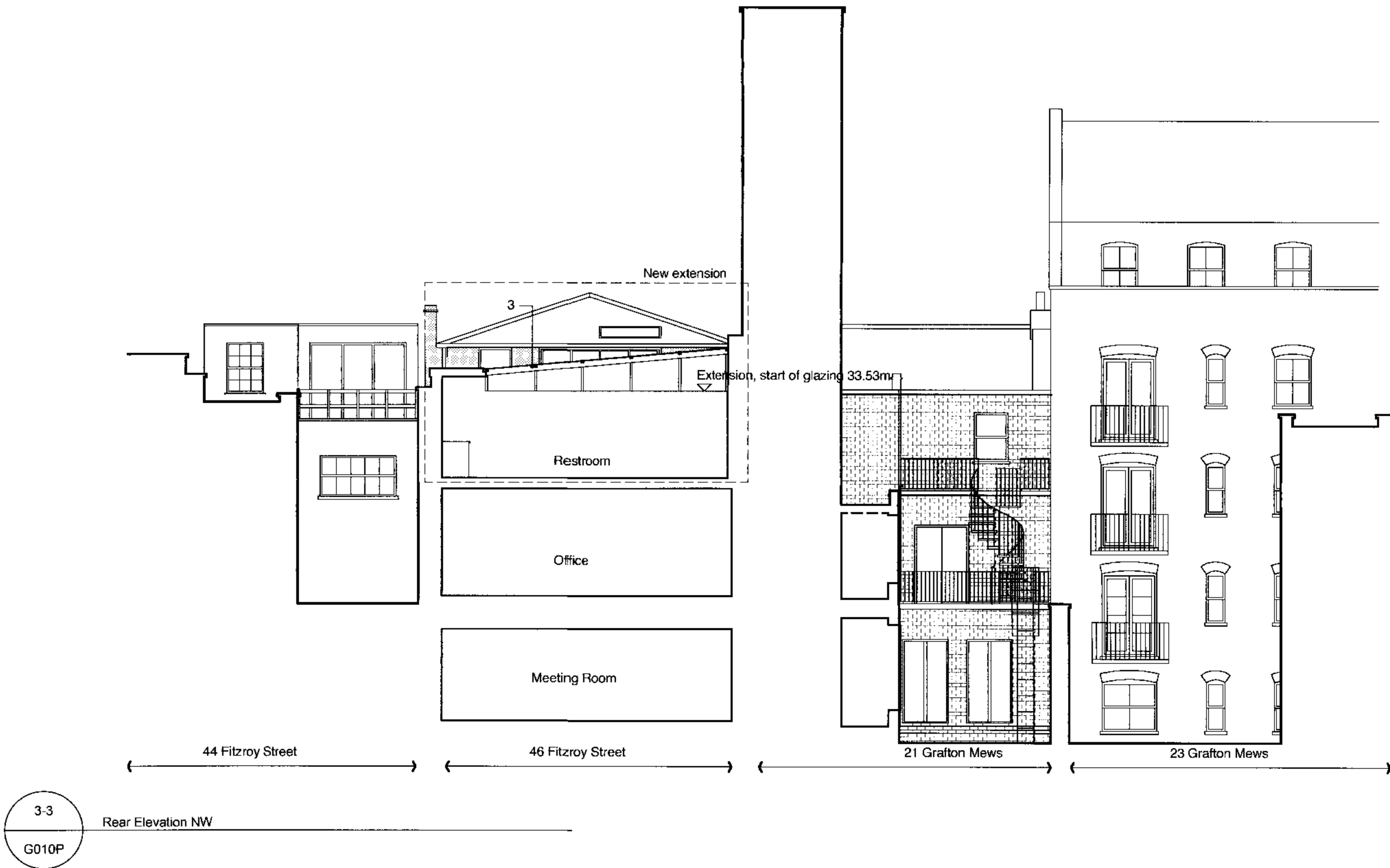
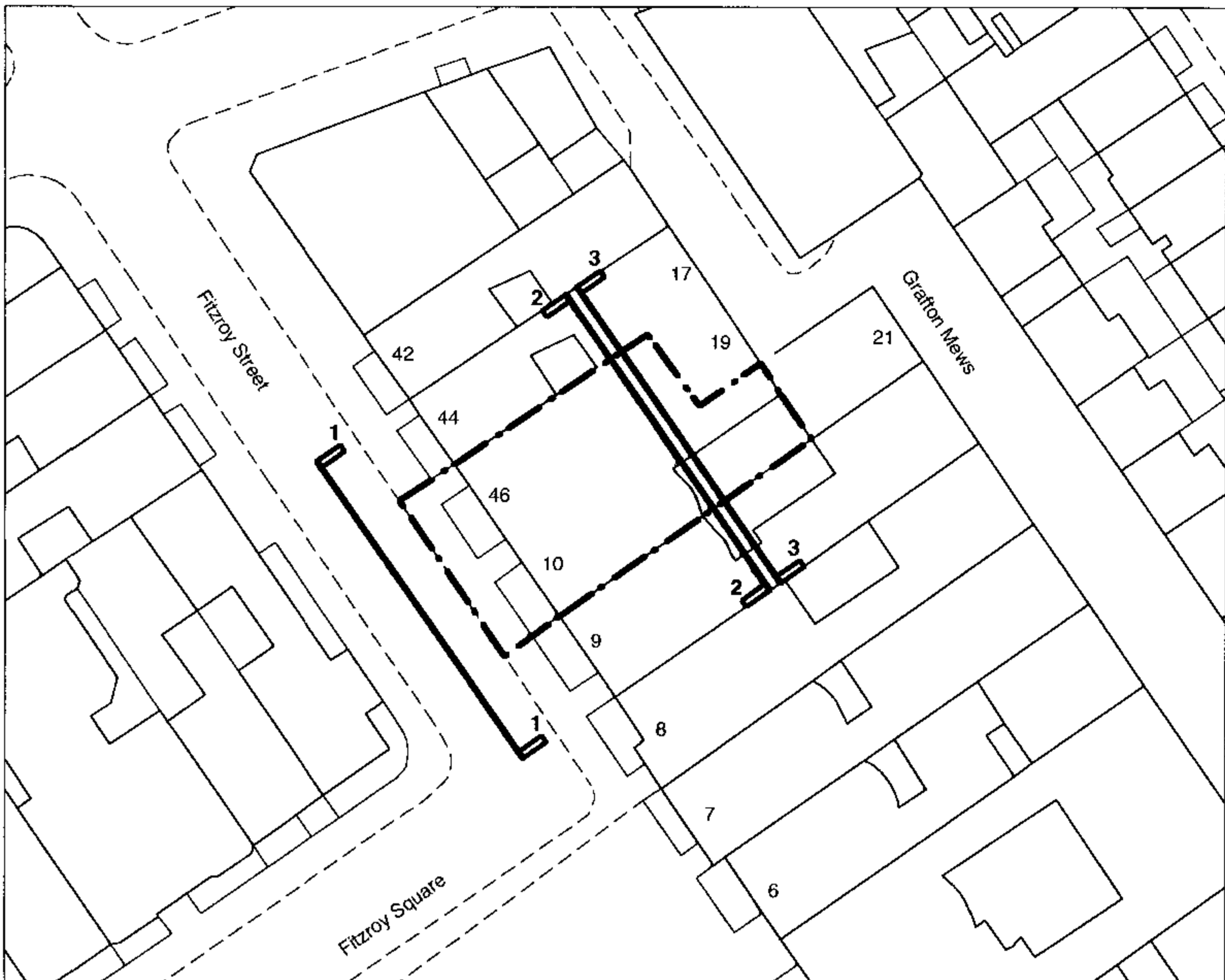


2  
G009P  
Proposed Third Floor Plan



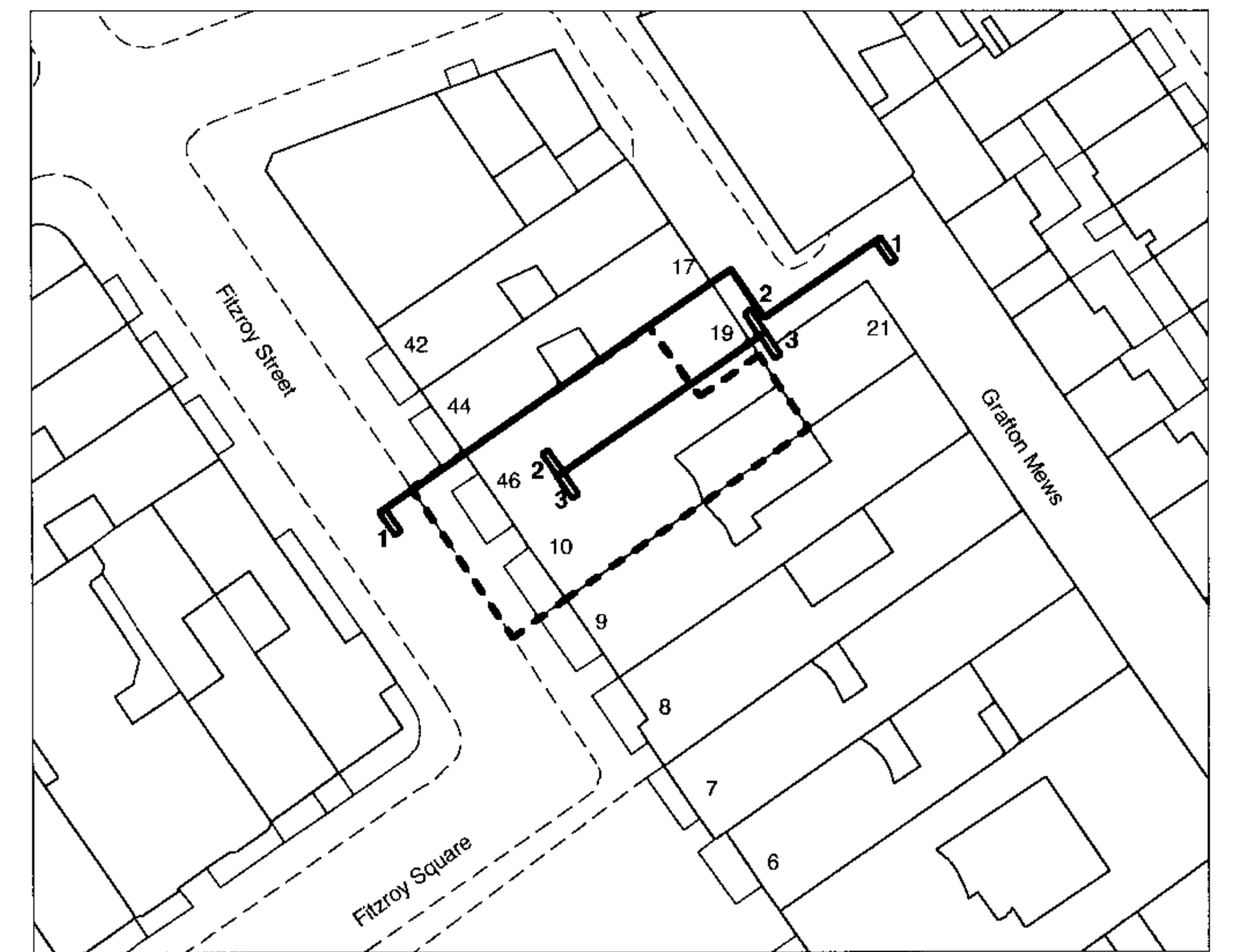
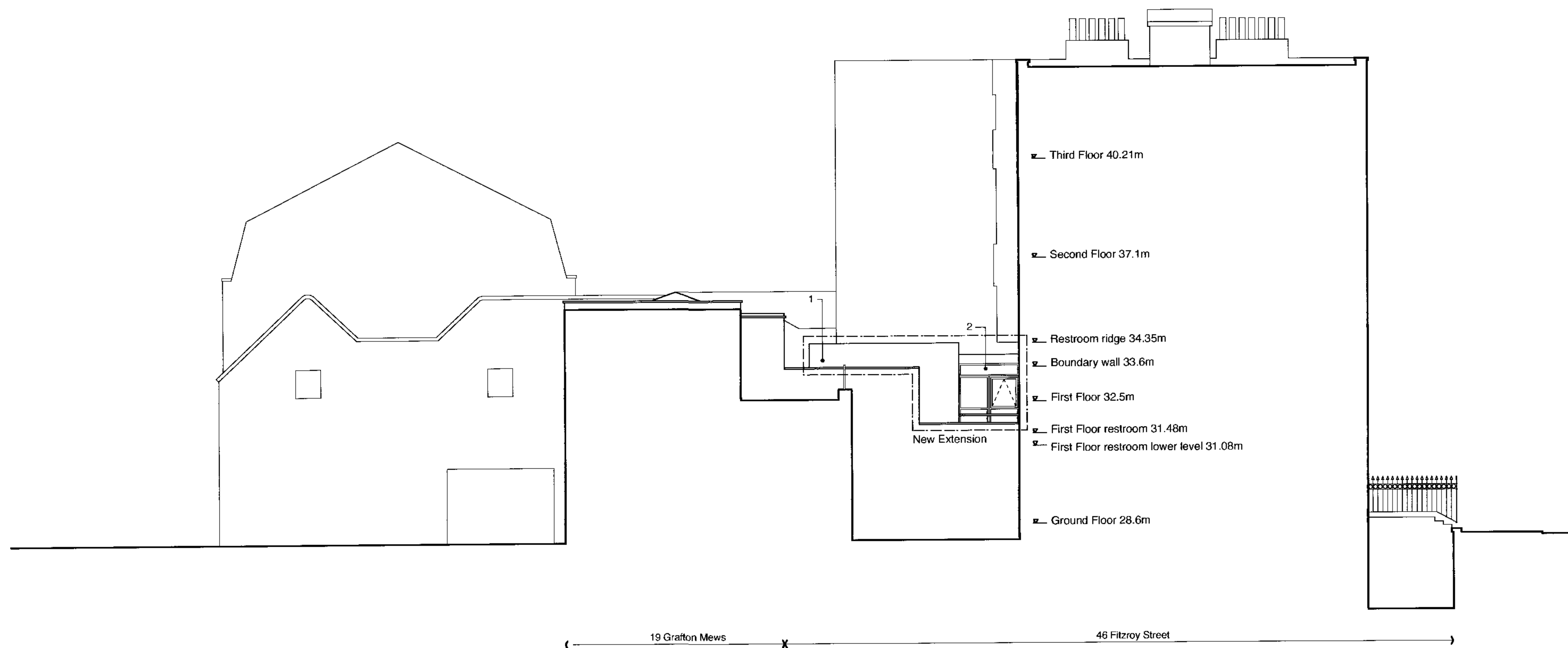
3  
G009P  
Proposed Roof Plan

Revision notes:		Revision notes:		148 curtain road london EC2A 3AR / t: 020 7729 0770 / f: 020 7729 0778 / e: mail@fluidoffice.com <b>FLUID</b>	
				general notes:	
				project: 10 FITROY SQUARE & 46 FITZROY STREET	
				drawing title: Proposed Second, Third & Roof Plans	
				purpose of drawing: PLANNING	
				dwg no: 1280_G009P	revision:
				scale: 1:100 @ A1, 1:200 @ A3	date: 08.10.07
				drawn by: JM	checked by: CE

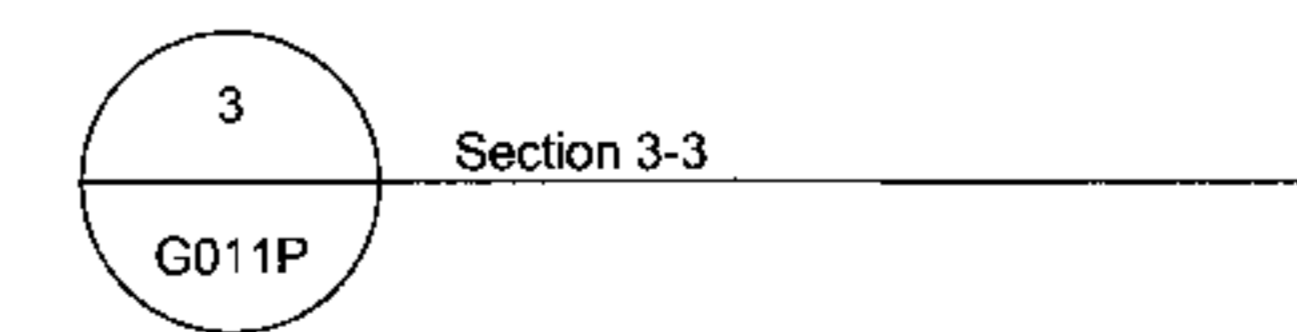
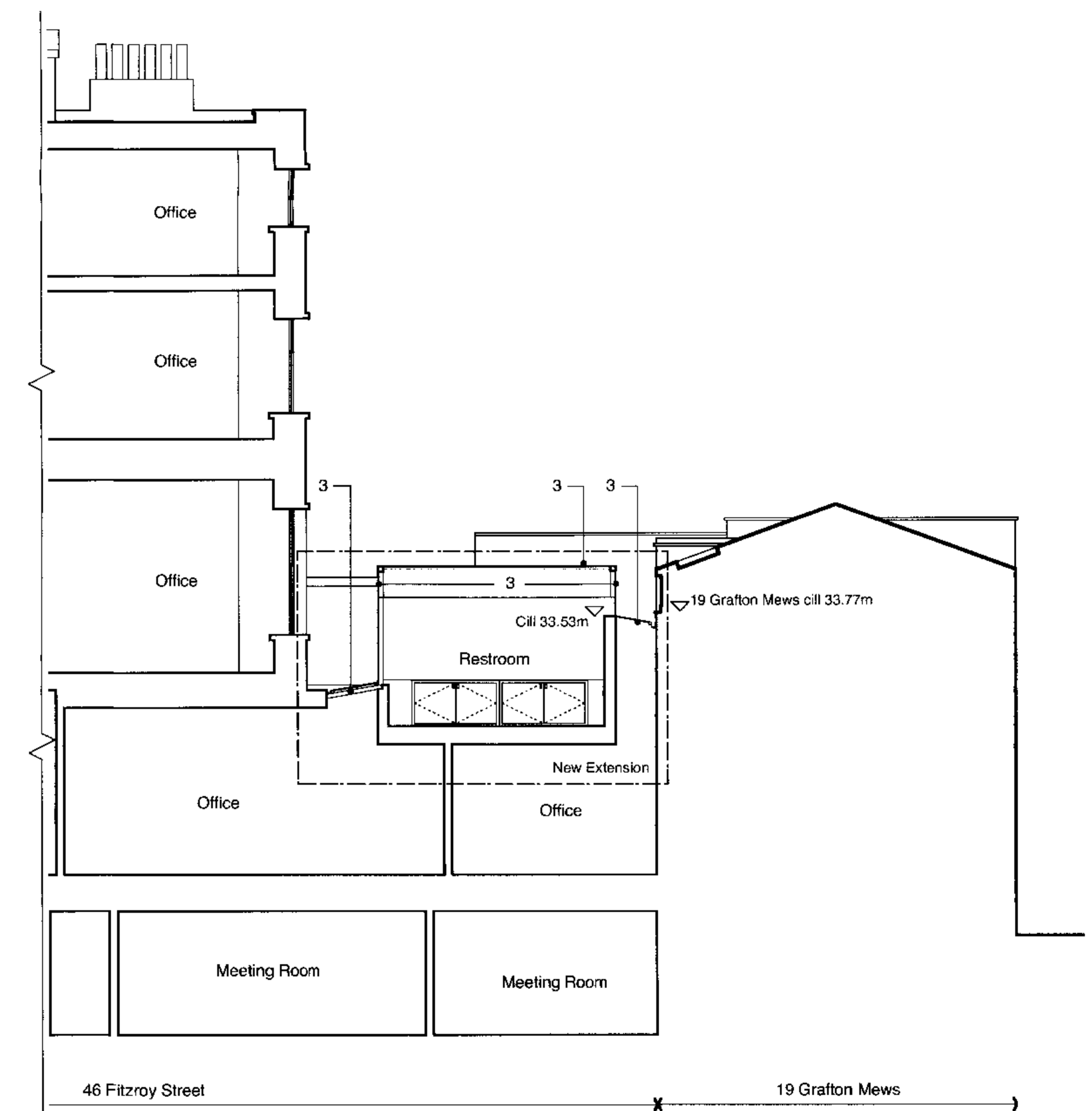
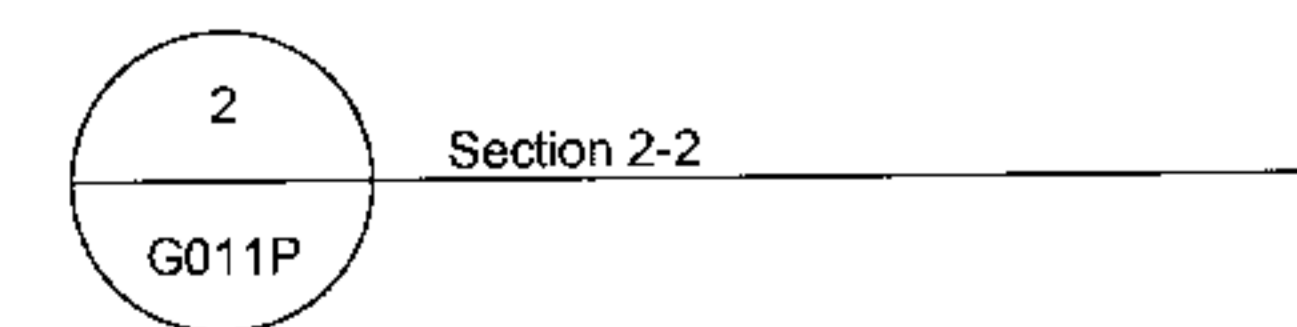
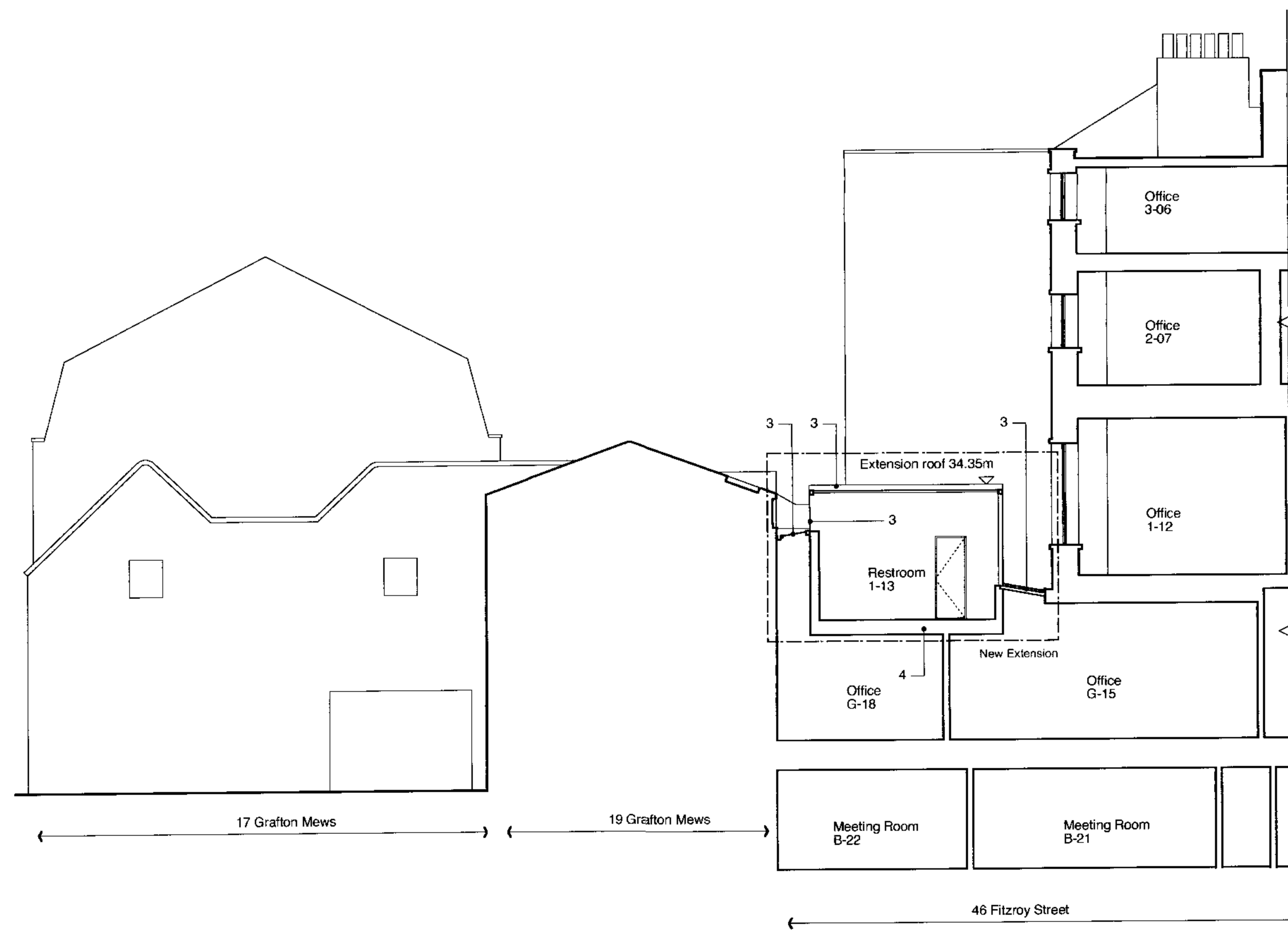
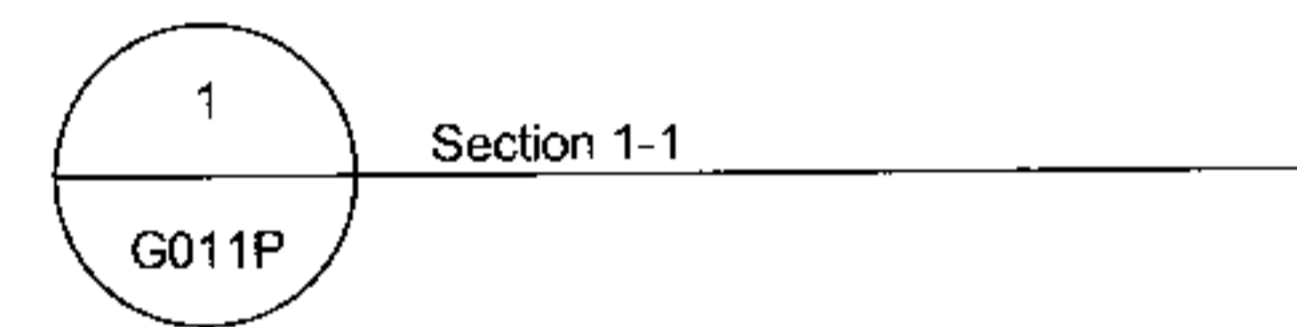


Revision notes:	Revision notes:

148 curtain road london EC2A 3AR / t: 020 7729 0770 / f: 020 7729 0778 / e: mail@fluidoffice.com		FLUID	
general notes:		project: 10 FITZROY SQUARE & 46 FITZROY STREET	
1. White render		drawing title: Proposed Front and Rear Elevations	
2. Slim profile aluminium framed double glazing units similar to precedents illustrated in accompanying Design & Access Statement		purpose of drawing: PLANNING	
3. Self cleaning double glazing units supported by slim profile aluminium frames		dwg no: 1280_G010P	revision:
4. Laminate hardwood veneer flooring		scale: 1:100 @ A1, 1:200 @ A3	date: 08.10.07
		drawn by: JM	checked by: CE



Location Plan @ 1:500



Revision notes:	Revision notes:

148 curtain road london EC2A 3AR / t: 020 7729 0770 / f: 020 7729 0778 / e: mail@fluidoffice.com		FLUID	
general notes:		project: 10 FITZROY SQUARE & 46 FITZROY STREET	
1. White render		drawing title: Proposed Side Elevations	
2. Slim profile aluminium framed clear double glazing units similar to precedents illustrated in accompanying Design & Access Statement		purpose of drawing: PLANNING	
3. Self cleaning clear double glazing units supported by slim profile aluminium frames		dwg no: 1280_G011P	revision:
4. Laminate hardwood veneer flooring		scale: 1:100 @ A1, 1:200 @ A3	date: 08.10.07
		drawn by: JM	checked by: CE