

16 DALEHAM MEWS
LONDON NW3

Proposed perspective
birds-eye view

DWG No.: 16DM/P601A

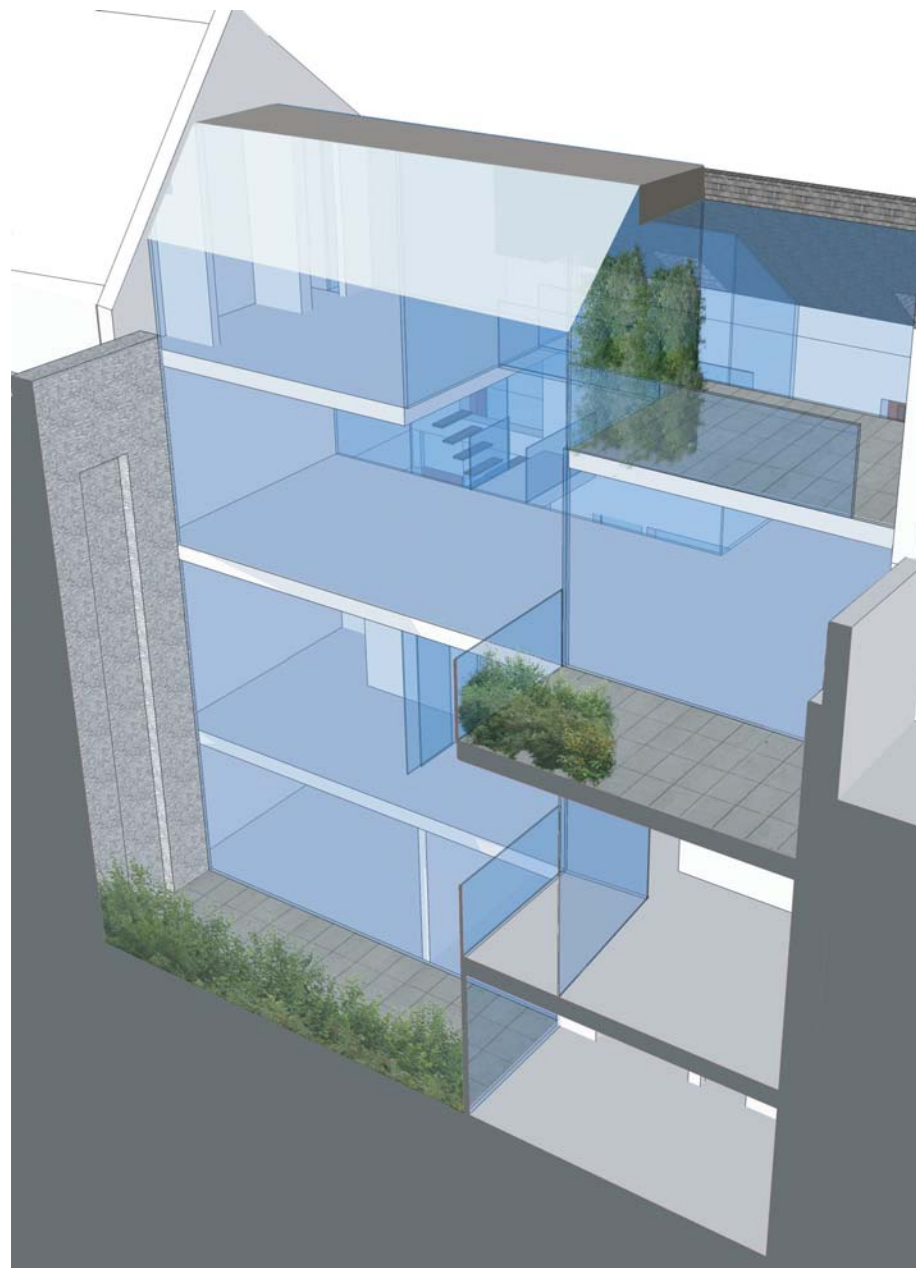
SCALE: N/A

DATE: August 2007

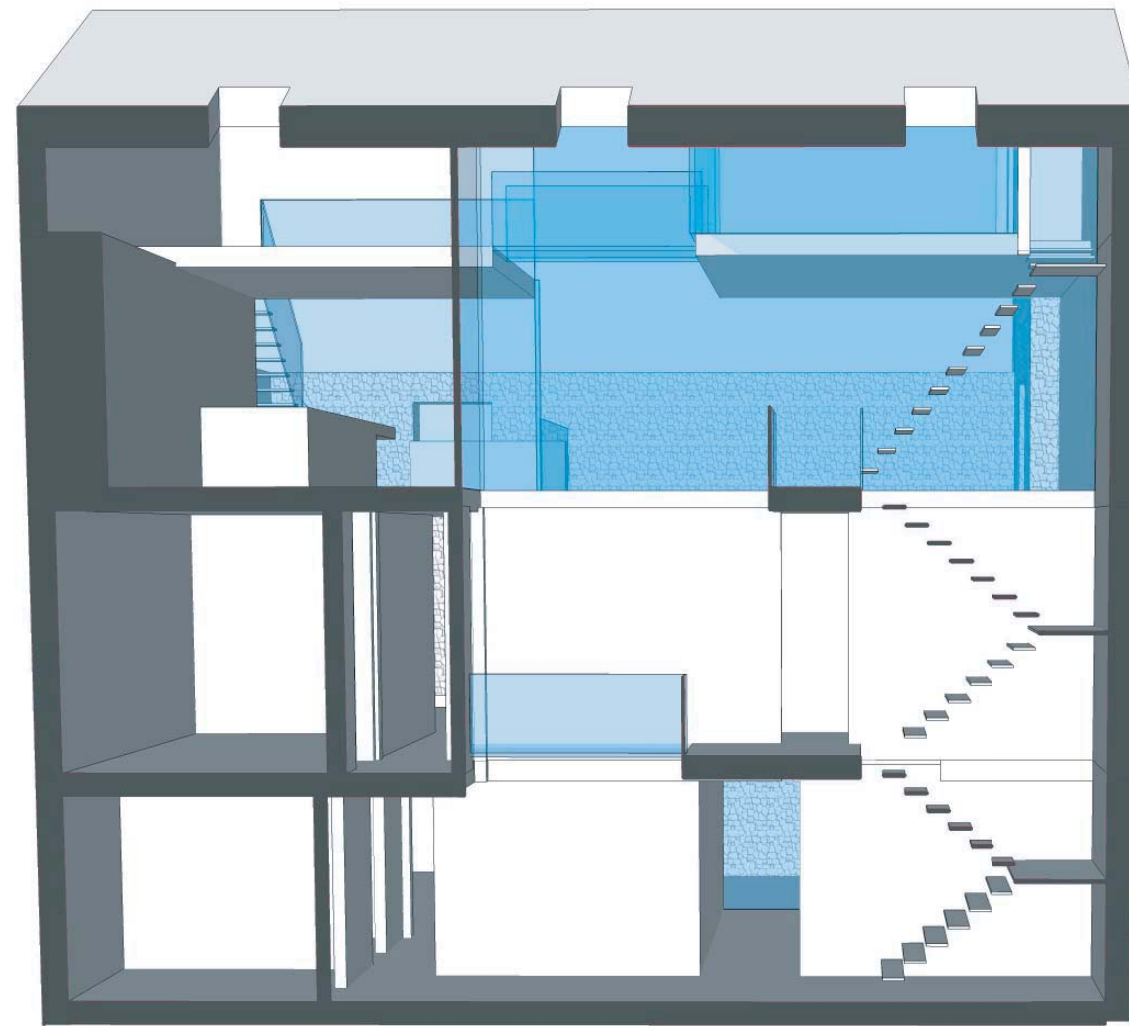
belsize
architects

© COPYRIGHT
NOT TO BE REPRODUCED OR USED
WITHOUT PERMISSION

48 PARKHILL ROAD LONDON NW3 2YP
TEL 020 7482 4420 FAX 020 7482 4186
EMAIL: MAIL@BELSIZEARCHITECTS.COM



Proposed perspective section EE



Proposed perspective section AA

16 DALEHAM MEWS
LONDON NW3

Proposed perspective
longitudinal sections

DWG No.: 16DM/P602

SCALE: N/A

DATE: August 2007

belsize
architects

© COPYRIGHT
NOT TO BE REPRODUCED OR USED
WITHOUT PERMISSION

48 PARKHILL ROAD LONDON NW3 2YP
TEL 020 7482 4420 FAX 020 7482 4186
EMAIL: MAIL@BELSIZEARCHITECTS.COM



Proposed perspective
section BB

16 DALEHAM MEWS
LONDON NW3

Proposed perspective
cross section

DWG No.: 16DM/P603A

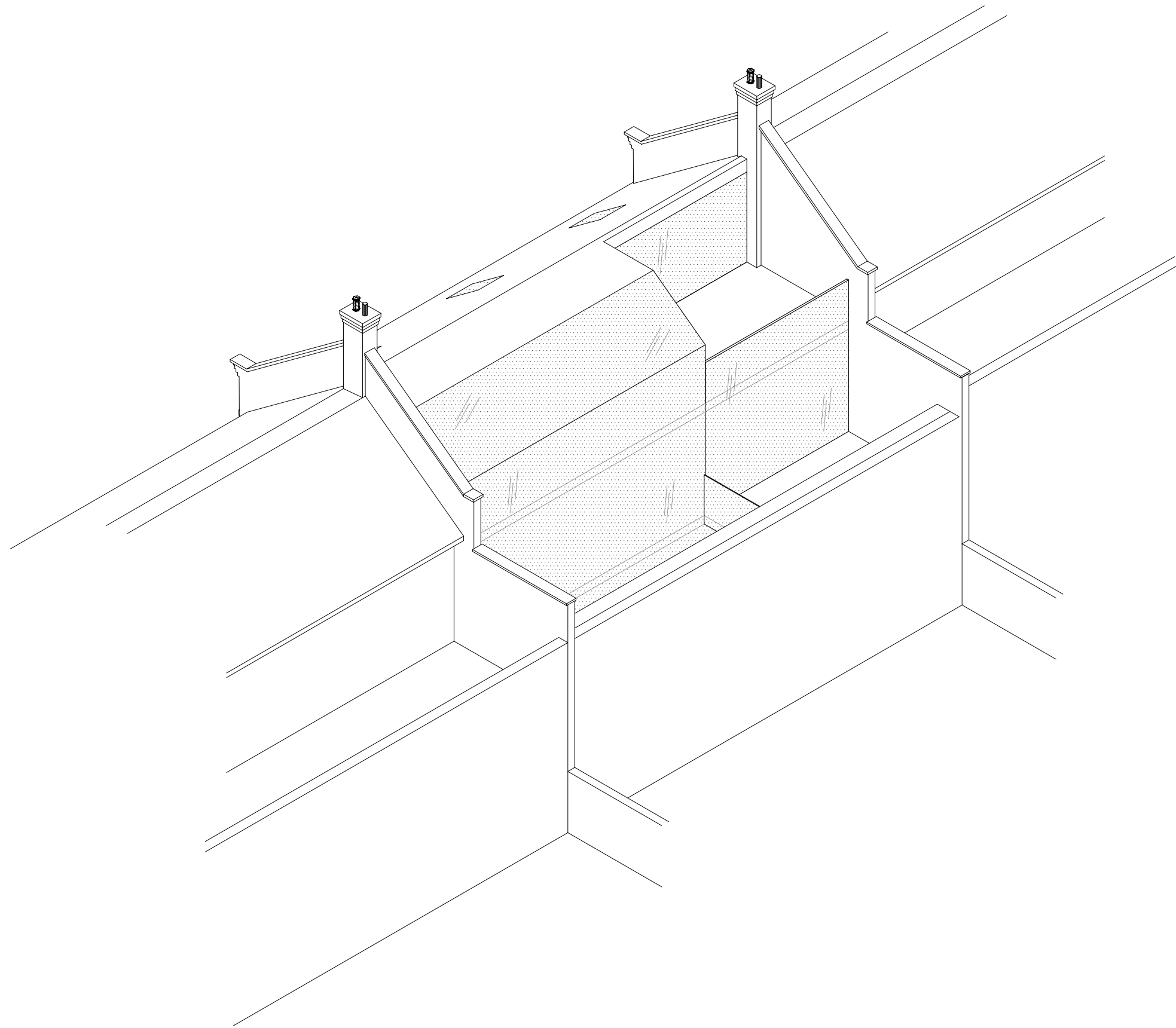
SCALE: N/A

DATE: August 2007

belsize
architects

© COPYRIGHT
NOT TO BE REPRODUCED OR USED
WITHOUT PERMISSION

48 PARKHILL ROAD LONDON NW3 2YP
TEL 020 7482 4420 FAX 020 7482 4186
EMAIL: MAIL@BELSIZEARCHITECTS.COM



16 DALEHAM MEWS
LONDON NW3

AXONOMETRIC REAR
VIEW

DWG No.: 16DM/SK01

SCALE: 1 : 100

DATE: DECEMBER 2007

belsize
architects

© COPYRIGHT
NOT TO BE REPRODUCED OR USED
WITHOUT PERMISSION

48 PARKHILL ROAD LONDON NW3 2YP
TEL 020 7482 4420 FAX 020 7482 4186
EMAIL: MAIL@BELSIZEARCHITECTS.COM