

Site Code :

Site Name : Euston

Site Address :

Contact Name : Matthew Moffatt

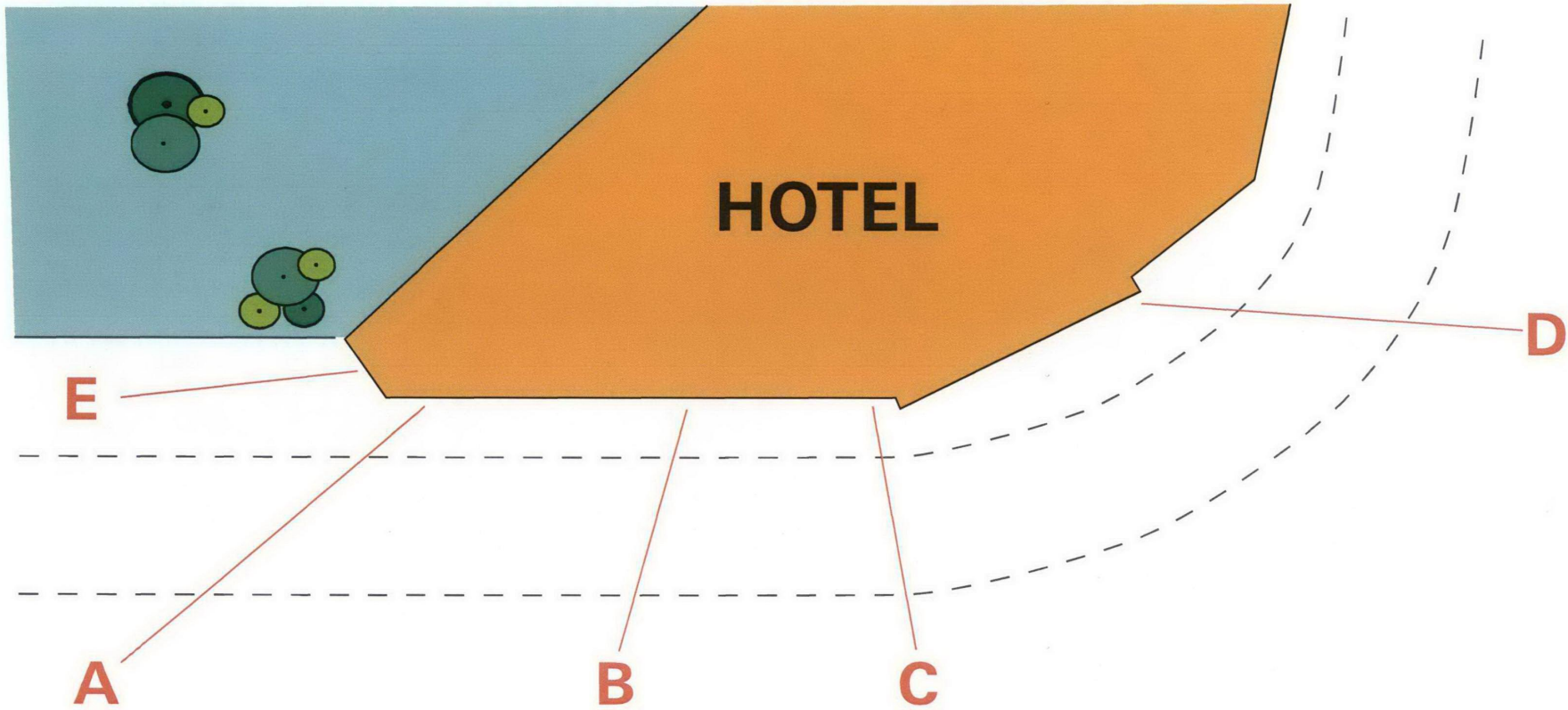
Contact Number : Matthew Moffatt 07789 281569      Switchboard: 0870 333 9107

Date : 13/12/07

Drawn By : DD

Revision :







## Existing overview





## Proposed overview

Remove existing vertical sign



Remove existing plaque signs



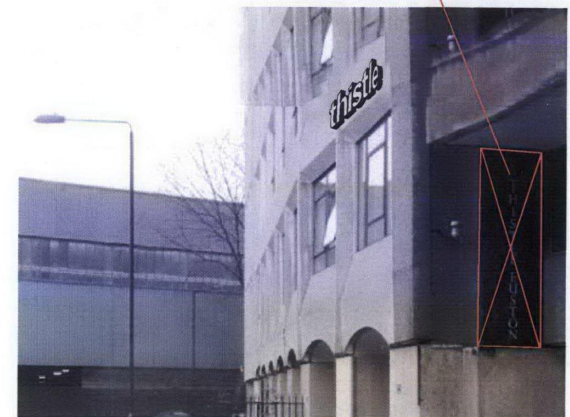
Remove existing vertical sign



Remove existing vertical sign



Remove existing vertical sign



Implementation Details

Location Ref : A

Sign No : 1

Sign Type : Illuminated letters

Substrate : Concrete

Size : 600mm Approx

Face Material : 3mm acrylic faced letters with 2mm aluminium 100mm returns

Graphics : Faces to have Day/night acrylic

Colour Ref : Returns painted satin back

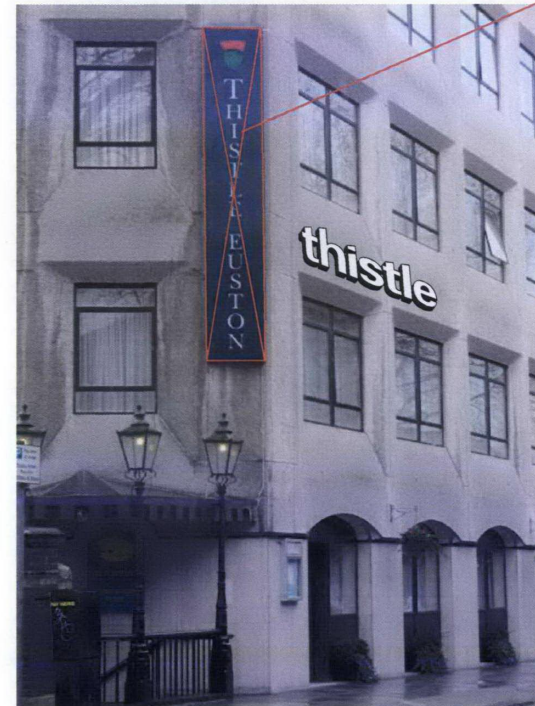
Illumination : Illumination is via LED's strip lights in white

Additional Notes : Letters to appear Black in the daylight and White at night.  
Remove existing vertical sign

Product Details

# thistle

Remove existing vertical sign





## Implementation Details

Location Ref : B

Sign No : 2

Sign Type : Internally illuminated signcase

Substrate : Concrete

Size : 4900x848mm

Face Material : Formed aluminium panel. Panel to have 100mm returns.

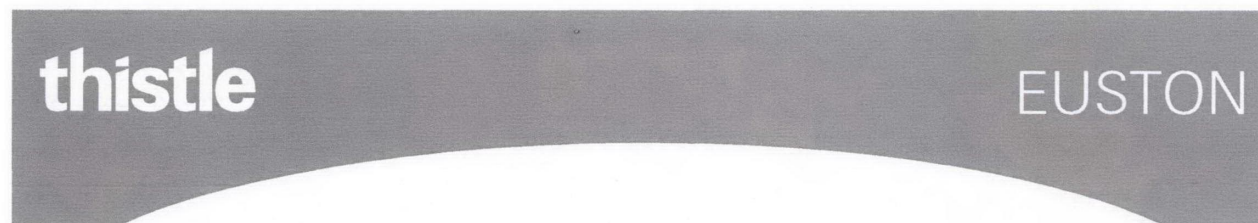
Graphics : Face of panel stencil cut and backed with 3mm Day/night Acrylic

Colour Ref : Panel finished match PANTONE 403c

Illumination : Signcase internally illuminated with fluorescent lamps.

Additional Notes : Letters to appear Black in the daylight and White at night  
Remove existing plaque signs

## Product Details



Implementation Details

Location Ref : C

Sign No : 3

Sign Type : Illuminated letters

Substrate : Concrete

Size : 395mm Approx

Face Material : 3mm acrylic faced letters with 2mm aluminium 100mm returns

Graphics : Faces to have Day/night acrylic

Colour Ref : Returns painted satin black

Illumination : Illumination is via LED's strip lights in white

Additional Notes : Letters to appear Black in the daylight and White at night.  
Remove existing vertical sign

Product Details

# EUSTON

Remove existing vertical sign



Implementation Details

Location Ref : D

Sign No : 4

Sign Type : Illuminated letters

Substrate : Concrete

Size : 600mm Approx

Face Material : 3mm acrylic faced letters with 2mm aluminium 100mm returns

Graphics : Faces to have Day/night acrylic

Colour Ref : Returns painted satin back

Illumination : Illumination is via LED's strip lights in white

Additional Notes : Letters to appear Black in the daylight and White at night.  
Remove existing vertical sign

Product Details

# thistle





## Implementation Details

Location Ref : E

Sign No : 5

Sign Type : Illuminated letters

Substrate : Concrete

Size : 600mm Approx

Face Material : 3mm acrylic faced letters with 2mm aluminium 100mm returns

Graphics : Faces to have Day/night acrylic

Colour Ref : Returns painted satin back

Illumination : Illumination is via LED's strip lights in white

Additional Notes : Letters to appear Black in the daylight and White at night.  
Remove existing vertical sign

## Product Details

# thistle

Remove existing vertical sign

