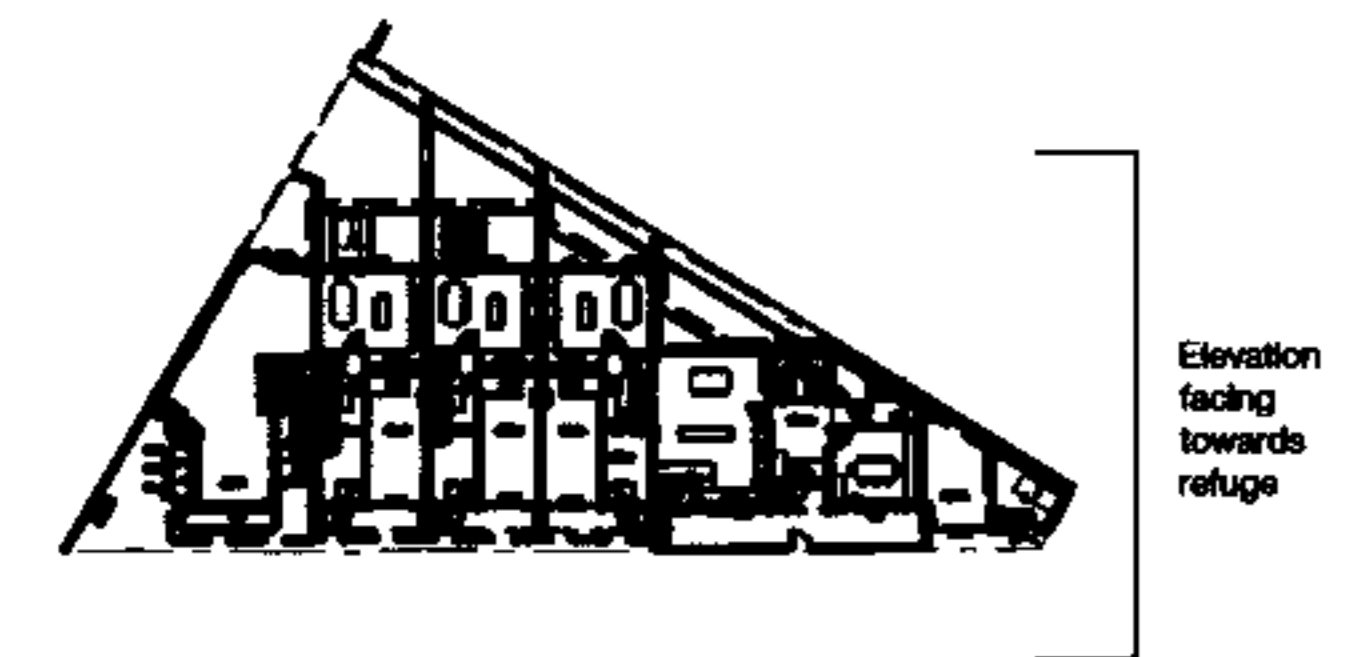


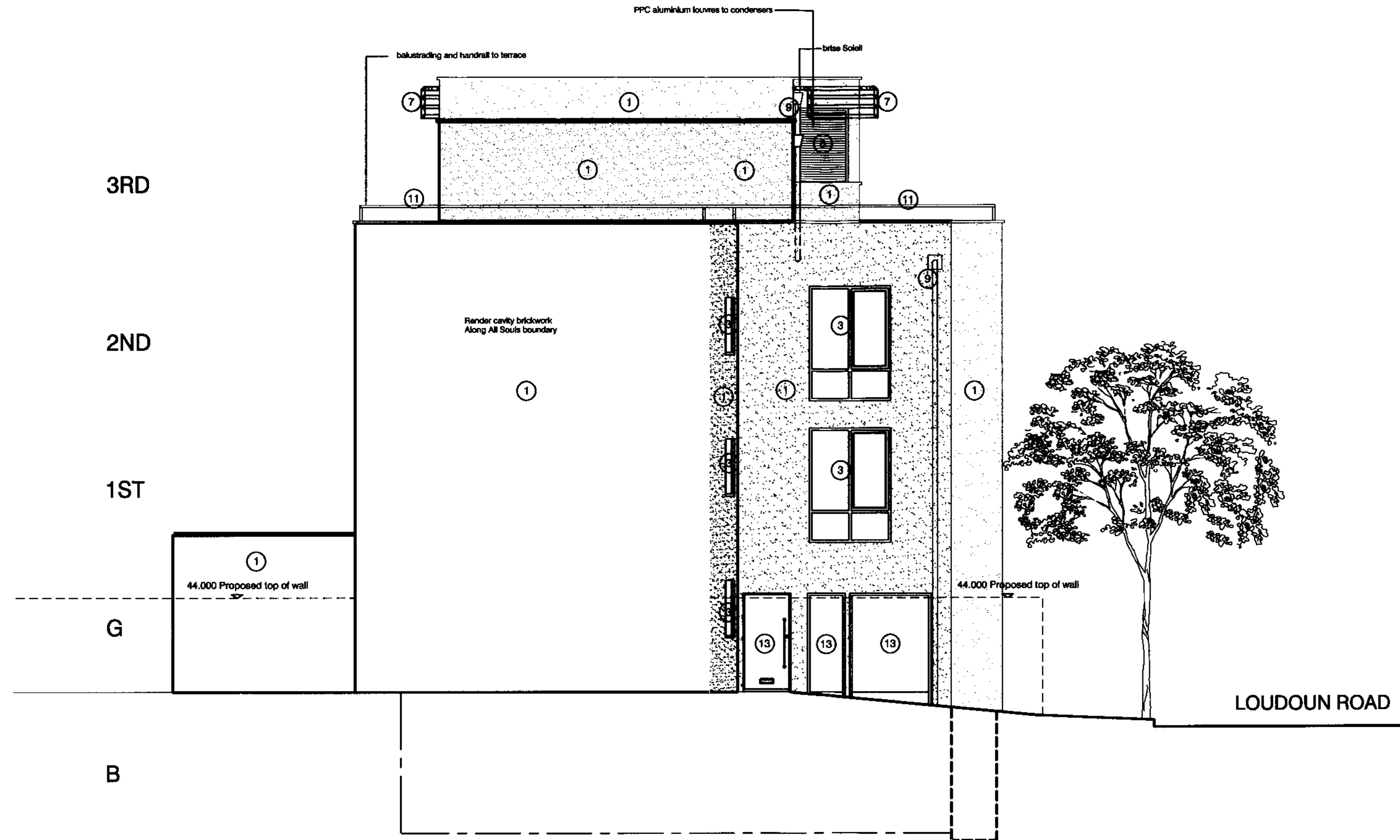
RECEIVED
 18.09.07

Materials

1. **Render:** white - Alumasc M.R. STSillit Silicone finish (grain size 1.5mm) Sample and colour submitted. Alumasc colour ref: 300/04. Sample submitted to planning services under separate cover.
2. **Facing brickwork:** Baggeridge Classic Blue. Sample submitted. Mortar colour blue grey.
3. **Windows:** Powder coated aluminium. Grey colour RAL 7023 Pressed aluminium metal cills to match finish of windows.
4. **Window panels:** Insulated flat panel polyester powder coated aluminium. Grey colour RAL 7023, to match windows.
5. **Entrance doors, garage doors and meter cupboards:** American Oak, with matching over panel. Horizontal boarded panels. Treated and stained to retained original colour. Entrance door glazing to be clear unwired, toughened glazing.
6. **Refuse door:** American Oak. Horizontal boarded panels. Treated and stained to retained original colour.
7. **Brise Soleil:** Powder coated aluminium. Grey colour RAL 7023. Aerofill profiles.
8. **Metal louvres to 4th floor condenser enclosure:** Powder coated aluminium. White.
9. **Rain water pipes and hopper:** Powder coated aluminium. Circular. Colour white.
10. **Timber louvres to front facade:** Powder coated aluminium frame. Grey colour RAL 7023. Aerofill profile timber louvres. External grade European Oak, treated and stained to retain colour.
11. **External balustrading to terraces:** Handrail and balustrade posts: powder coated aluminium, flat plate, grey colour RAL 7023. Glass infill panels.
12. **Balcony to rear & bridge to rear courtyards:** Brushed stainless steel handrail with glass infill panels.
13. **B1 Entrance door, external meter cupboard & bin store:** White painted timber doors.
14. **Brickwork:** Brickwork hidden from view, tight to face of existing boundary wall.

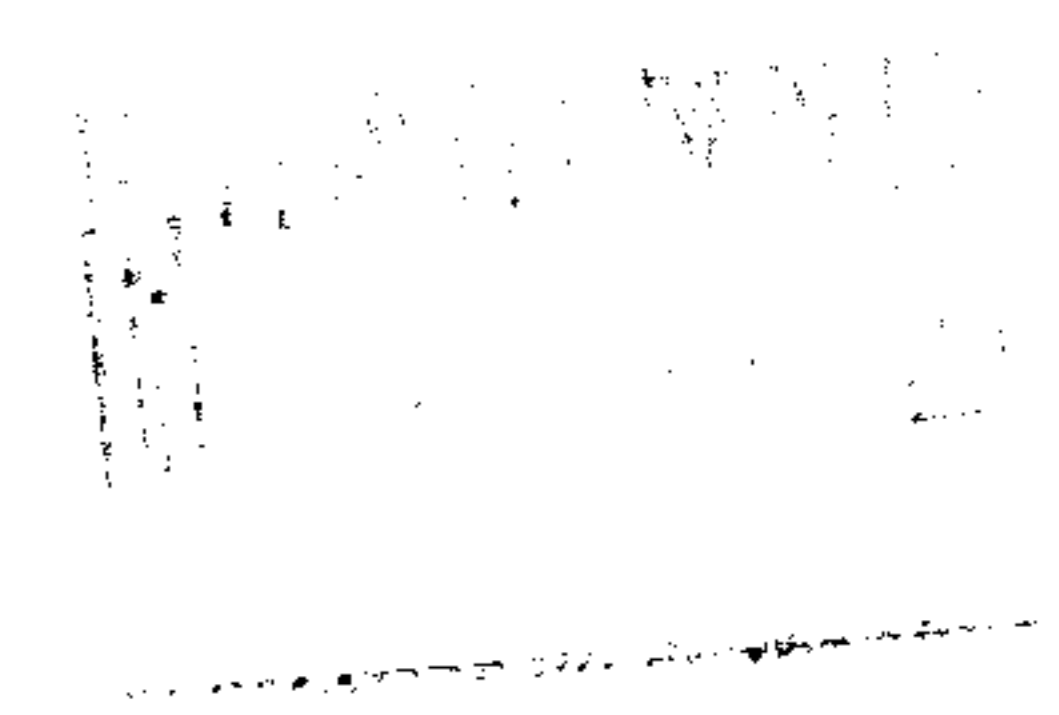
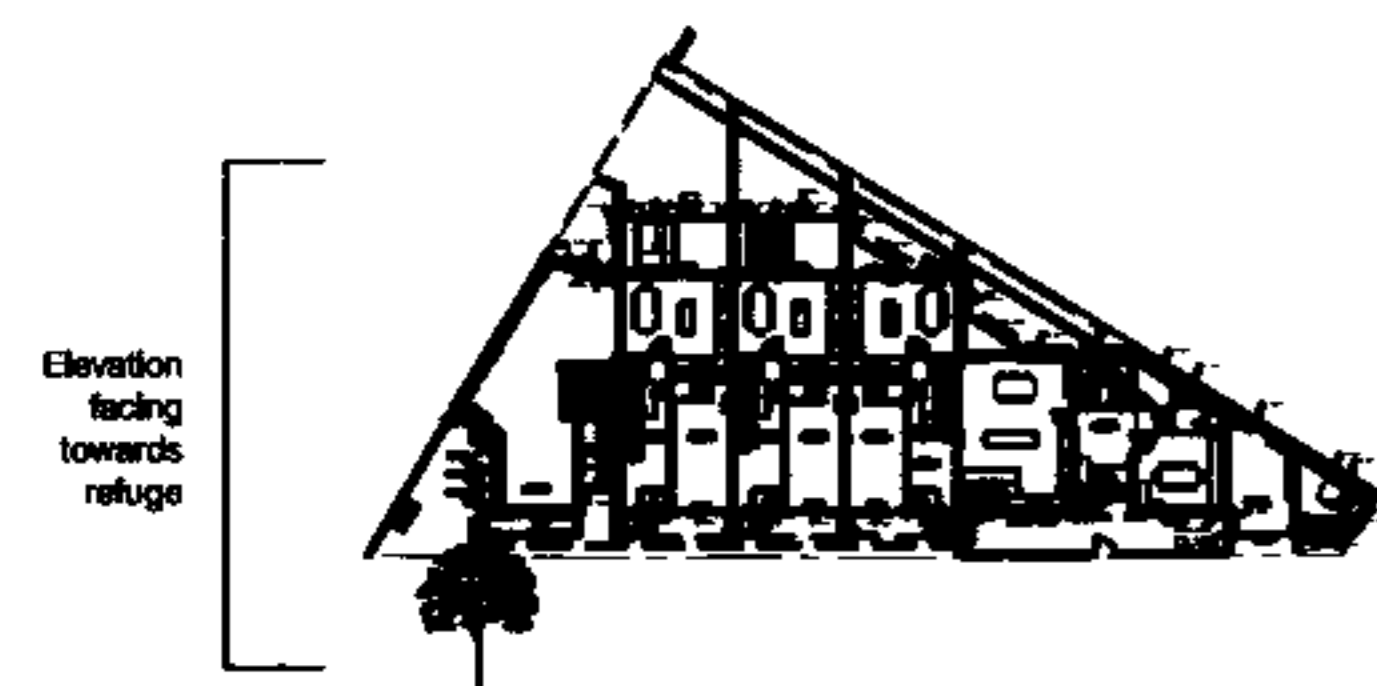


CONTRACT	150 Loudoun Road	SCALE	1:50@A1 - 1/100@A3
DATE	18.09.07	DRAWN	TP
CHECKED	DR	DESIGNED BY	07.187/202
TITLE	Side elevation (refuge side)	REVISION	PL2



Materials

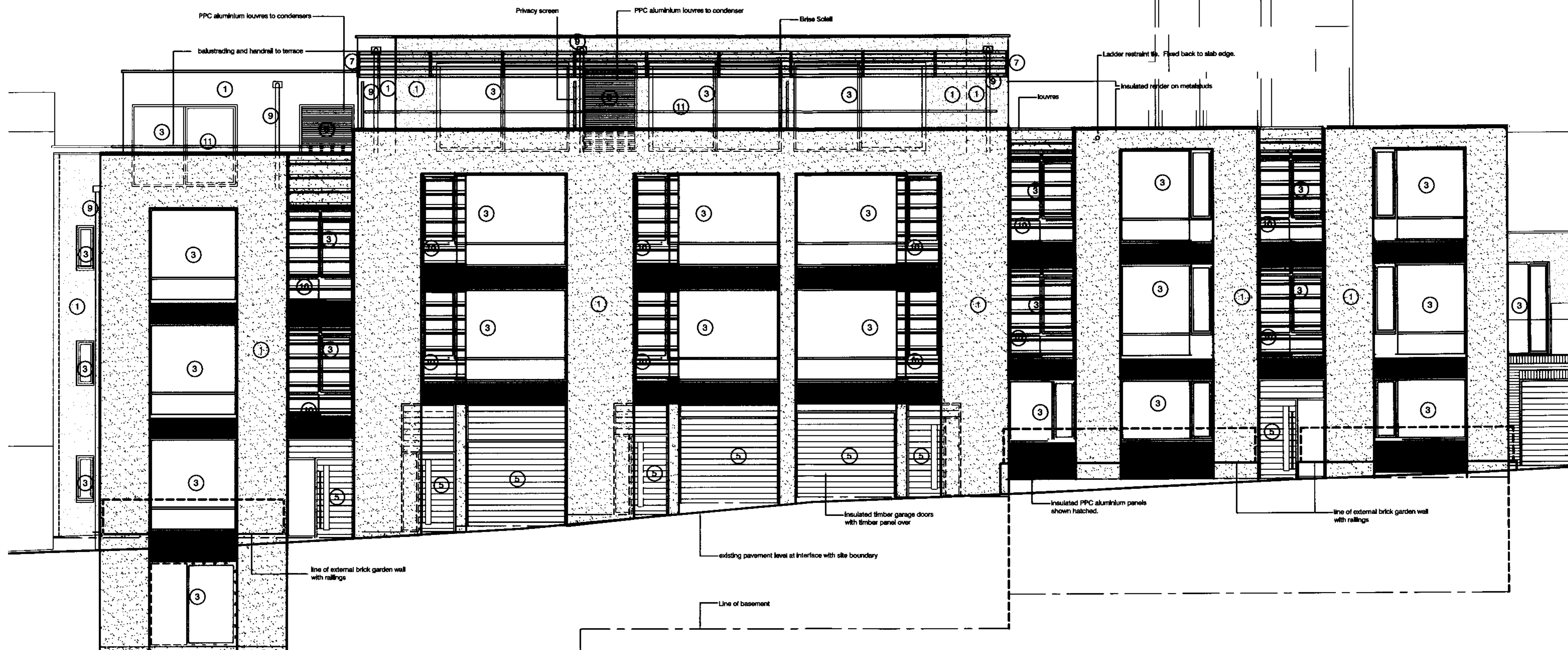
1. Render: white - Alumasc M.R. STSilditt Silicone finish (grain size 1.5mm) Sample and colour submitted. Alumasc colour ref: 300/04. Sample submitted to planning services under separate cover.
2. Facing brickwork: Baggeridge Classic Blue. Sample submitted. Mortar colour blue grey.
3. Windows: Powder coated aluminium. Grey colour RAL 7023 Pressed aluminium metal cills to match finish of windows.
4. Window panels: Insulated flat panel polyester powder coated aluminium. Grey colour RAL 7023, to match windows.
5. Entrance doors, garage doors and meter cupboards: American Oak, with matching over panel. Horizontal boarded panels. Treated and stained to retained original colour. Entrance door glazing to be clear unwired, toughened glazing.
6. Refuse door: American Oak. Horizontal boarded panels. Treated and stained to retained original colour.
7. Brise Soleil: Powder coated aluminium. Grey colour RAL 7023. Aerofoil profile.
8. Metal louvres to 4th floor condenser enclosure: Powder coated aluminium. White.
9. Rain water pipes and hopper: Powder coated aluminium. Circular. Colour white.
10. Timber louvres to front facade: Powder coated aluminium frame. Grey colour RAL 7023. Aerofoil profile timber louvres. External grade European Oak, treated and stained to retain colour.
11. External balustrading to terraces: Handrail and balustrade posts: powder coated aluminium, flat plates, grey colour RAL 7023. Glass infill panels.
12. Balcony to rear & bridge to rear courtyards: Brushed stainless steel handrail with glass infill panels.
13. B1 Entrance door, external meter cupboard & bin store: White painted timber doors.
14. Brickwork: Brickwork hidden from view, light to face of existing boundary wall.



CONTRACT	150 Loudoun Road	SCALE	1:50@A1 - 1:100@A3
DATE	19.09.07	DATE	17.12.07
DRAWN	TP	DRAWN	TP
CHECKED	DR	CHECKED	DR
TITLE	Side elevation (All Souls side)	DRAWING No	07.187/203
		REVISION	PL2

DO NOT SCALE
REPORT ERRORS AND OMISSIONS TO THE ARCHITECT
CHECK ALL DIMENSIONS BEFORE FABRICATION

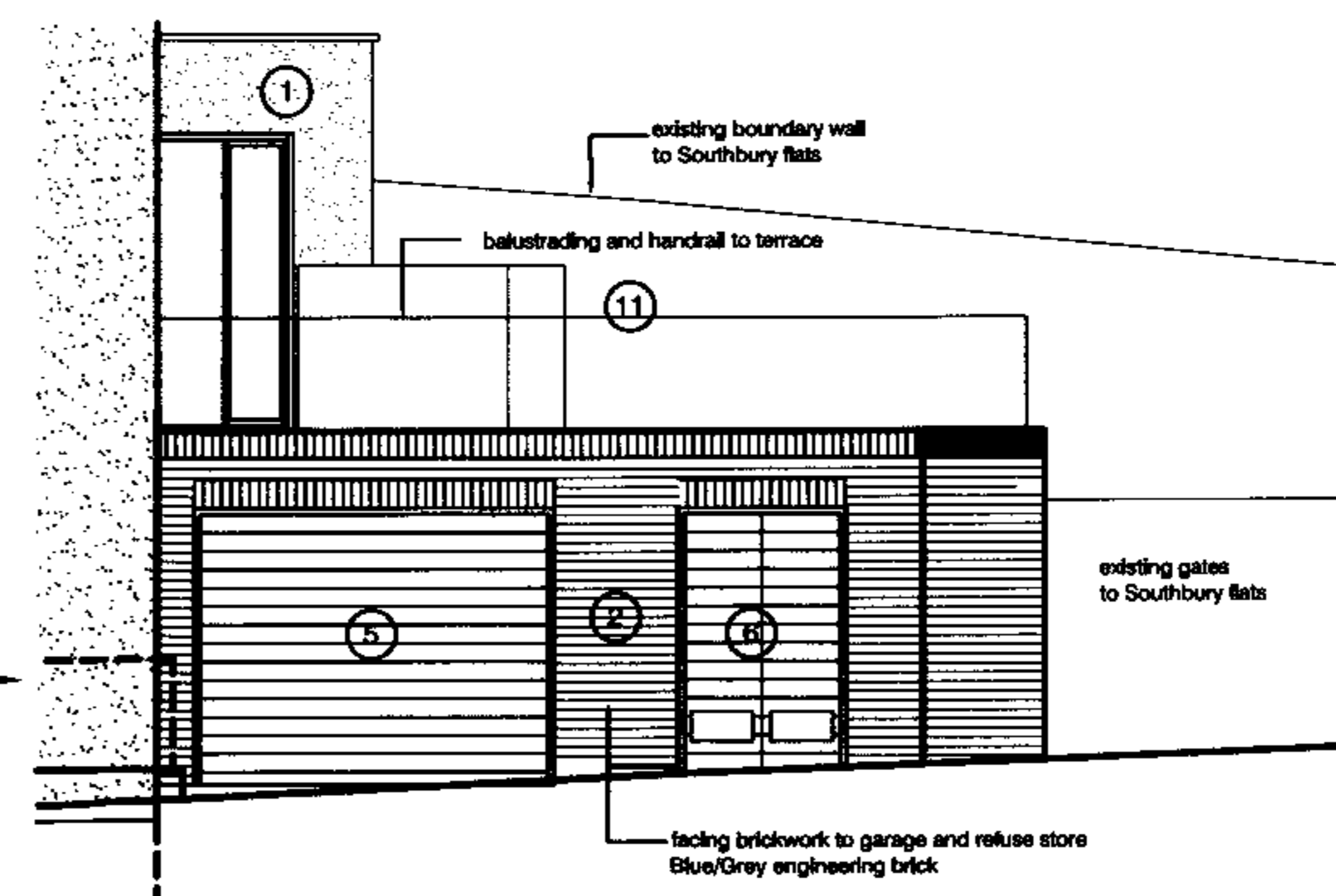
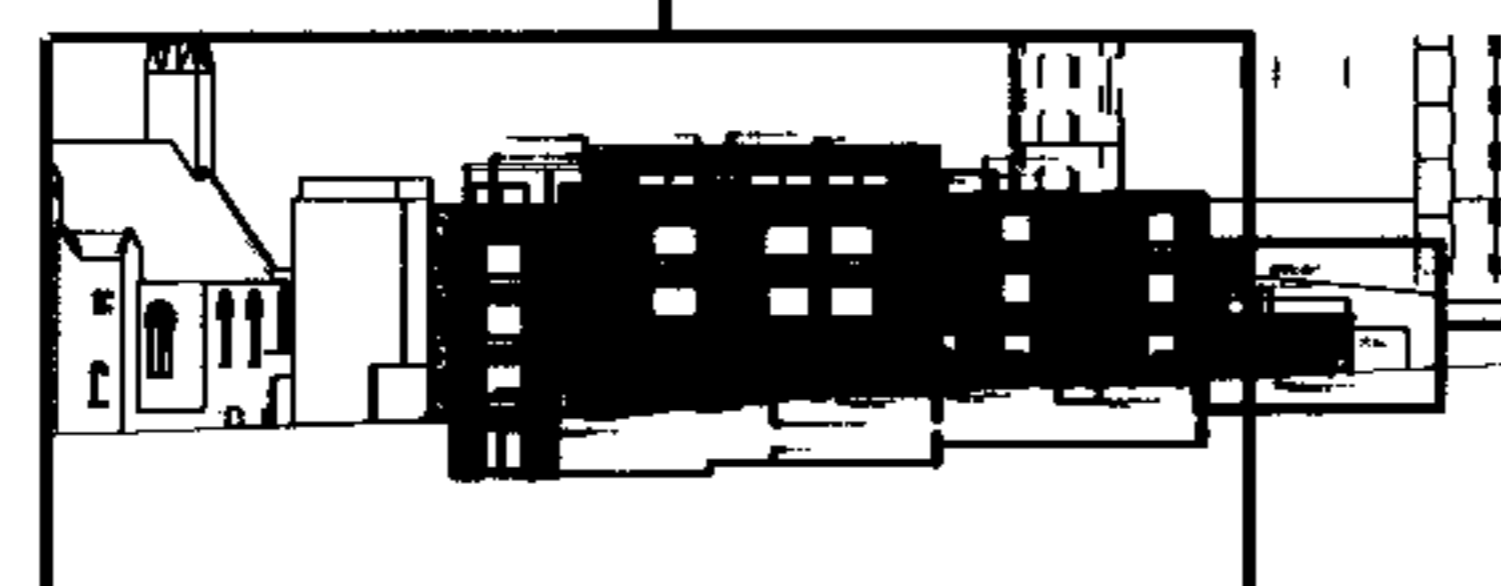
REVISION	DESCRIPTION	DRAWN	CHECKED	DATE
PL1	Shadows added	TP	DR	18/08/07
PL2	Windows omitted from All Scale	TP	DR	19/08/07
PL3	Windows omitted on House 5 Shadows omitted & material notes added Submitted for planning condition 2	TP	DR	12/12/07
PL4	Material number references added	TP	DR	24/01/08



Materials

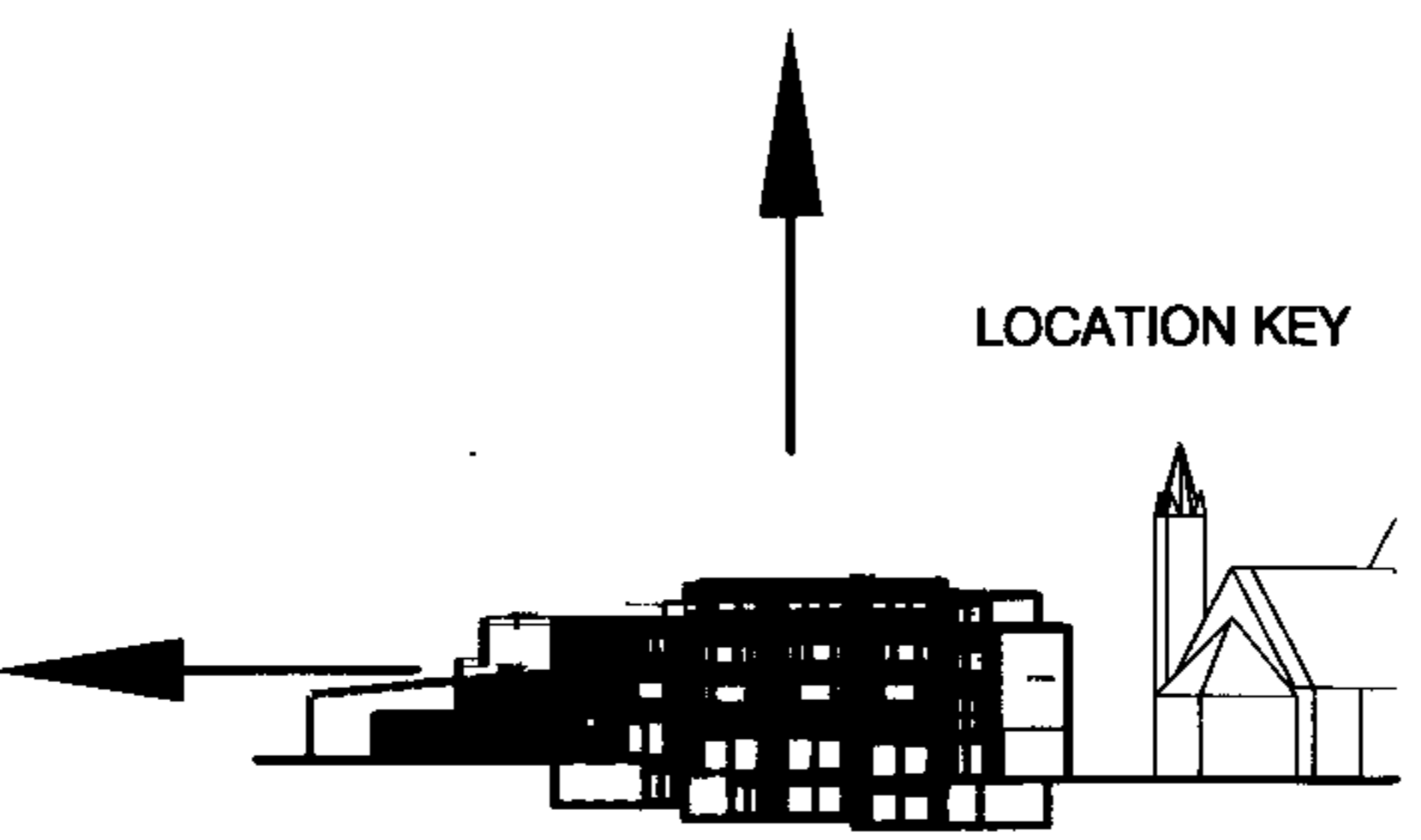
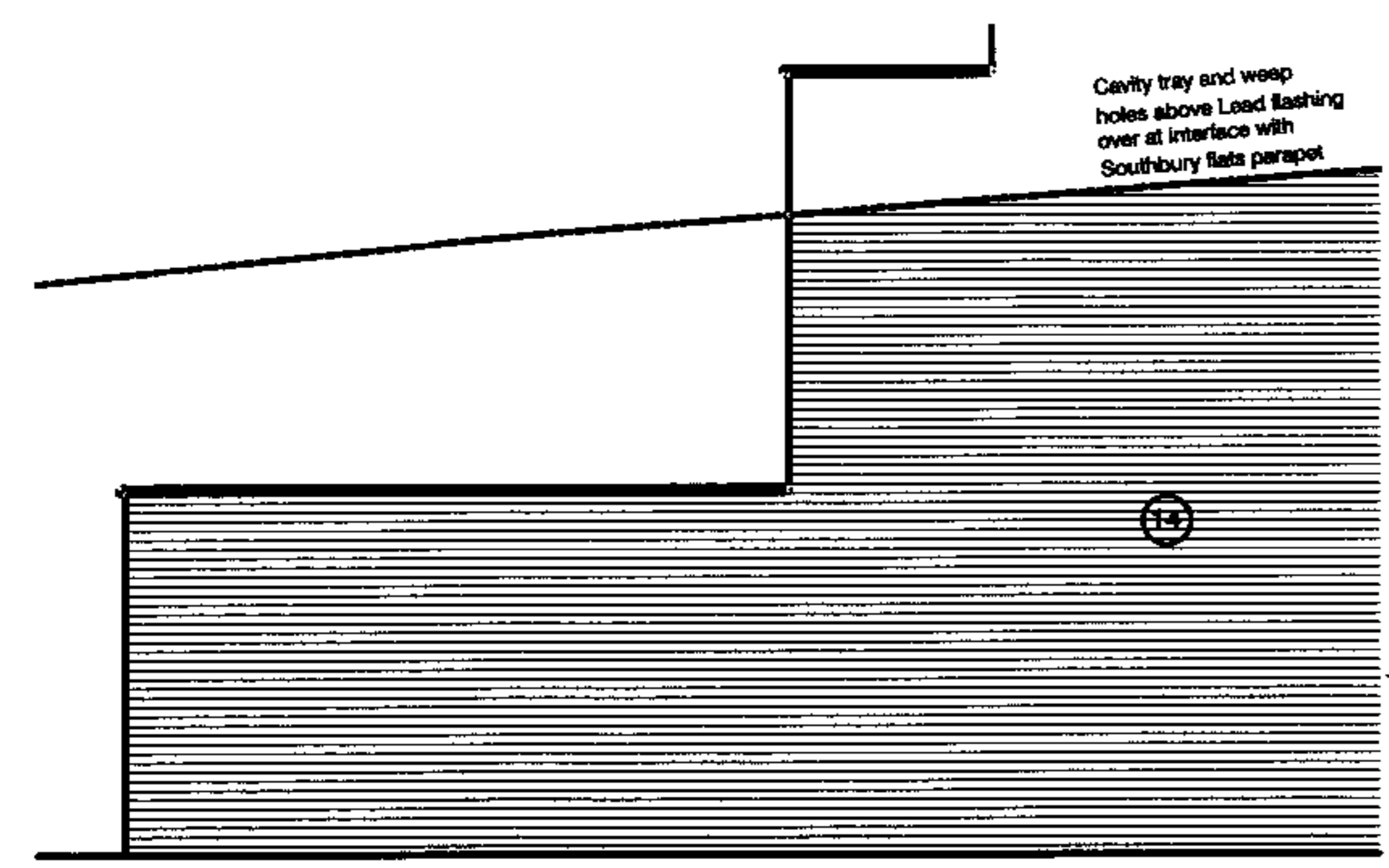
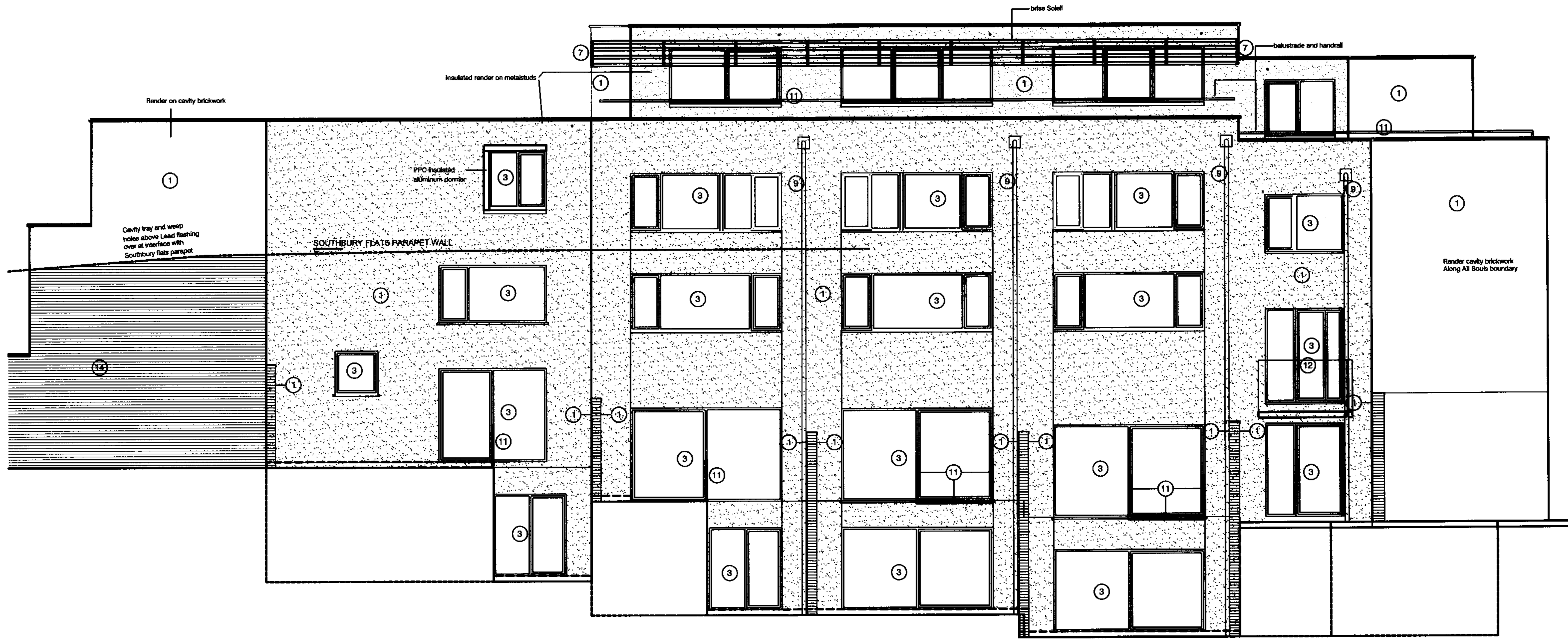
1. **Render:** white - Alumasc M.R. STSINKIT Silicone finish (grain size 1.5mm) Sample and colour submitted. Alumasc colour ref: 300/04. Sample submitted to planning services under separate cover.
2. **Facing brickwork:** Baggeridge Classic Blue. Sample submitted. Mortar colour blue grey.
3. **Windows:** Powder coated aluminium. Grey colour RAL 7023 Pressed aluminium metal cills to match finish of windows.
4. **Window panels:** Insulated flat panel polyester powder coated aluminium. Grey colour RAL 7023, to match windows.
5. **Entrance doors, garage doors and meter cupboards:** American Oak, with matching over panel. Horizontal boarded panels. Treated and stained to retained original colour. Entrance door glazing to be clear unwired, toughened glazing.
6. **Refuse door:** American Oak. Horizontal boarded panels. Treated and stained to retained original colour.
7. **Brise Soleil:** Powder coated aluminium. Grey colour RAL 7023. Aerofoli profile.
8. **Metal louvres to 4th floor condenser enclosure:** Powder coated aluminium. White.
9. **Rain water pipes and hopper:** Powder coated aluminium. Circular. Colour white.
10. **Timber louvres to front facade:** Powder coated aluminium frame. Grey colour RAL 7023. Aerofoli profile timber louvres. External grade European Oak, treated and stained to retain colour.
11. **External balustrading to terraces:** Handrail and balustrade posts: powder coated aluminium, flat plate, grey colour RAL 7023. Glass infill panels.
12. **Balcony to rear & bridge to rear courtyards:** Brushed stainless steel handrail with glass infill panels.
13. **B1 Entrance door, external meter cupboard & bin store:** White painted timber doors.
14. **Brickwork:** Brickwork hidden from view, tight to face of existing boundary wall.

LOCATION KEY



CONTRACT		SCALE	1/50 @ A1
150 Loudoun Road		DATE	05.09.07
TITLE		DRAWN	TP
Front Elevation		CHECKED	DR
DRAWING NO.		REVISION	PL4
			07.187/220

ATP Architects & Building Surveyors
Brook House Coventry Road Ilford Essex IG1 4QR
T 020 8532 4141 F 020 8532 4140 E atp.ilford@atpgrp.co.uk



Materials

1. Render: white - Alumasc M.R. STSIIKitt Silicone finish (grain size 1.5mm) Sample and colour submitted. Alumasc colour ref: 300/04. Sample submitted to planning services under separate cover.
2. Facing brickwork: Baggeridge Classic Blue. Sample submitted. Mortar colour blue grey.
3. Windows: Powder coated aluminium. Grey colour RAL 7023 Pressed aluminium metal cills to match finish of windows.
4. Window panels: Insulated flat panel polyester powder coated aluminium. Grey colour RAL 7023, to match windows.
5. Entrance doors, garage doors and meter cupboards: American Oak, with matching over panel. Horizontal boarded panels. Treated and stained to retained original colour. Entrance door glazing to be clear unframed, toughened glazing.
6. Refuse door: American Oak. Horizontal boarded panels. Treated and stained to retained original colour.
7. Brise Soleil: Powder coated aluminium. Grey colour RAL 7023. Aerofoil profile.
8. Metal louvres to 4th floor condenser enclosure: Powder coated aluminium. White.
9. Rain water pipes and hopper: Powder coated aluminium. Circular. Colour white.
10. Timber louvres to front facade: Powder coated aluminium frame. Grey colour RAL 7023. Aerofoil profile timber louvres. External grade European Oak, treated and stained to retain colour.
11. External balustrading to terraces: Handrail and balustrade posts: powder coated aluminium, flat plate, grey colour RAL 7023. Glass infill panels.
12. Balcony to rear & bridge to rear courtyards: Brushed stainless steel handrail with glass infill panels.
13. B1 Entrance door, external meter cupboard & bin store: White painted timber doors.
14. Brickwork: Brickwork hidden from view, tight to face of existing boundary wall.

CONTRACT	150 Loudoun Road	SCALE	1/50@A1 - 1/100@A3
DATE	05.08.07	DATE	05.08.07
DRAWN	TP	DRAWN	TP
CHECKED	DR	CHECKED	DR
TITLE	Rear Elevation	DRAWING NO.	07.187/221
REVISION	PL3	REVISION	PL3