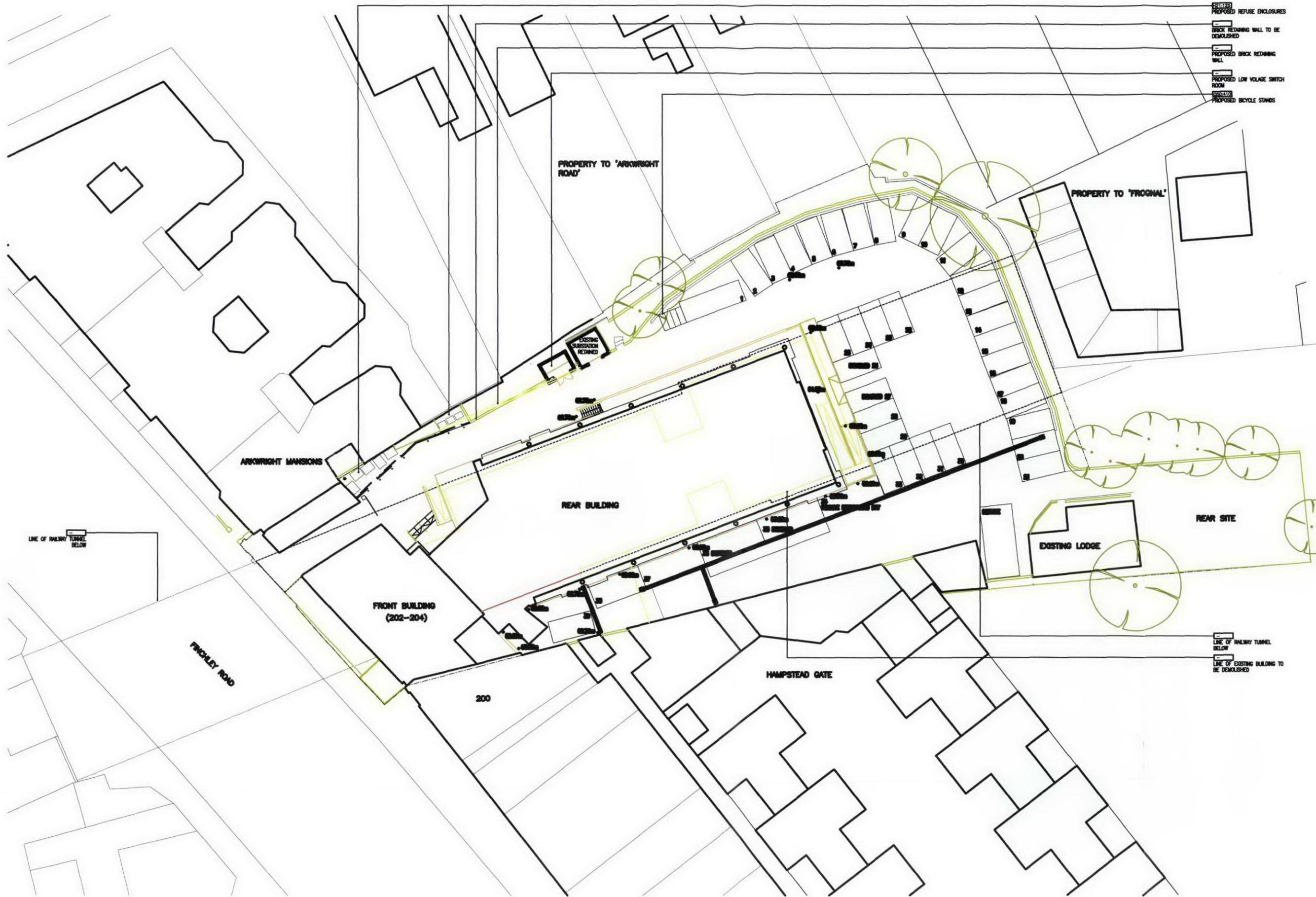


## **APPENDIX B**

## **Existing Car Park**





**202-204 FINCHLEY ROAD  
LONDON NW3  
LANDSCAPE ARCHITECTURE**

SOFT LANDSCAPE TO LANDSCAPE  
CONSULTANTS DESIGN AND SPECIFICATION  
EXTENT OF ALL HARD LANDSCAPE  
REINSTATEMENT TO BE DETERMINED

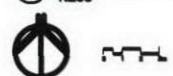
NO.	REVISION	DATE	BY	CHECKED	DATE	BY	CHECKED
1	ISSUED FOR TENDERS	01/08/08	AW	AW			
2	ISSUED FOR TENDERS	01/08/08	AW	AW			
3	ISSUED FOR TENDERS	01/08/08	AW	AW			
4	ISSUED FOR TENDERS	01/08/08	AW	AW			
5	ISSUED FOR TENDERS	01/08/08	AW	AW			
6	ISSUED FOR TENDERS	01/08/08	AW	AW			
7	ISSUED FOR TENDERS	01/08/08	AW	AW			
8	ISSUED FOR TENDERS	01/08/08	AW	AW			
9	ISSUED FOR TENDERS	01/08/08	AW	AW			
10	ISSUED FOR TENDERS	01/08/08	AW	AW			

**JESTICO+WHILES**

**202-204 FINCHLEY ROAD  
LONDON NW3  
LANDSCAPE ARCHITECTURE**

202-204 FINCHLEY ROAD  
LONDON NW3  
TINDALL OVERSEAS  
SITE WORKS  
2008/100 E

**SITE WORKS**  
1:200





## **APPENDIX C**

## **Visibility Splays**





Grove House, Lutyens Close, Chineham  
Basingstoke, Hampshire, RG24 8AG  
www.i-transport.co.uk

Tel: 01256 338640  
Fax: 01256 338644

REV	DATE	BY	DESCRIPTION	CHK	APD
STATUS: DRAFT					

TITLE: VISIBILITY SPLAYS	
PROJECT: PROJECT OASIS LAND TO THE REAR OF 202-204 FINCHLEY ROAD, CAMDEN	CLIENT: TINDALL OVERSEAS

DRAWING No: ITB2085-GA-003	REV:
PROJECT No: ITB2085	
SCALE @ A3: 1:250	CHECKED: E.C.
FILE REF: ITB2085-GA-003	DRAWN: P.R.
	APPROVED: DATE: MAY'07



## **APPENDIX D**

## **PTAL Calculation**

## Calculation of PTAL

Services	Stop	Route	Distance (m)	Frequency (per hour)	Walk Time	SWT	Total Access Time	EDF	Accessibility Index
Rail	Finchley Rd & Frognal	Stratford	40	5	0.5	6.75	7.25	4.14	4.14
	West Hamstead Thameslink	Moorgate	850	7	10.63	5.04	15.66	1.92	0.96
	West Hamstead Thameslink	Sutton	850	3	10.63	10.75	21.38	1.40	0.70
<b>Rail Accessibility Index</b>									<b>5.80</b>
LU	Finchley Rd Tube	(Jubilee Line) Stratford	350	15	4.375	2.75	7.13	4.21	4.21
	Finchley Rd Tube	(Metropolitan Line) Aldgate	350	12	4.375	3.25	7.63	3.93	1.97
<b>LU Accessibility Index</b>									<b>6.18</b>
Bus	Finchley Rd	13/N13	20	8	0.25	5.75	6.00	5.00	5.00
		82	20	8	0.25	5.75	6.00	5.00	2.50
		113	20	6	0.25	7	7.25	4.14	2.07
<b>Bus Accessibility Index</b>									<b>9.57</b>
<b>Overall Accessibility Index</b>									<b>21.54</b>

### NOTES

- I.1 Details of the available services (London Underground, buses and 'overground' trains), service access points, valid routes and frequencies have been taken from published timetables, Nation Rail Enquiries and the TfL website.
- I.2 Walking distances are calculated between the site entrance (i.e. the 'point of interest') and the public transport access point; an average walk speed of 4.8kph is assumed to calculate walking times.
- I.3 For bi-directional services the direction with the higher frequency is considered.
- I.4 For each route a Scheduled Waiting Time (SWT) is calculated. This takes into consideration the interval between services.  
 $SWT = 0.5 * (60 / \text{Frequency})$
- I.5 To allow for a reliability factor, 2 minutes are added to the SWT for buses and 0.75 minutes for rail services.
- I.6 Total access time to a particular service is calculated by adding the walk time to SWT.
- I.7 Equivalent Doorstep Frequency (EDF) treats access time as a theoretical average waiting time as though the route was available at the "doorstep" of the site.  
 $EDF = 30 / \text{total access time (minutes)}$
- I.8 The Accessibility Index (AI) for any single transport mode is calculated by dividing all but the maximum EDF in half and adding them to the maximum EDF.  
 $AI(\text{mode}) = EDF_{\text{max}} + (0.5 * \sum \text{All other EDFs})$
- I.9 The overall accessibility index for the point of interest is the sum of the individual AIs over all modes.  
 $\text{Overall AI} = AI(\text{Bus}) + AI(\text{Rail}) + AI(\text{LU})$

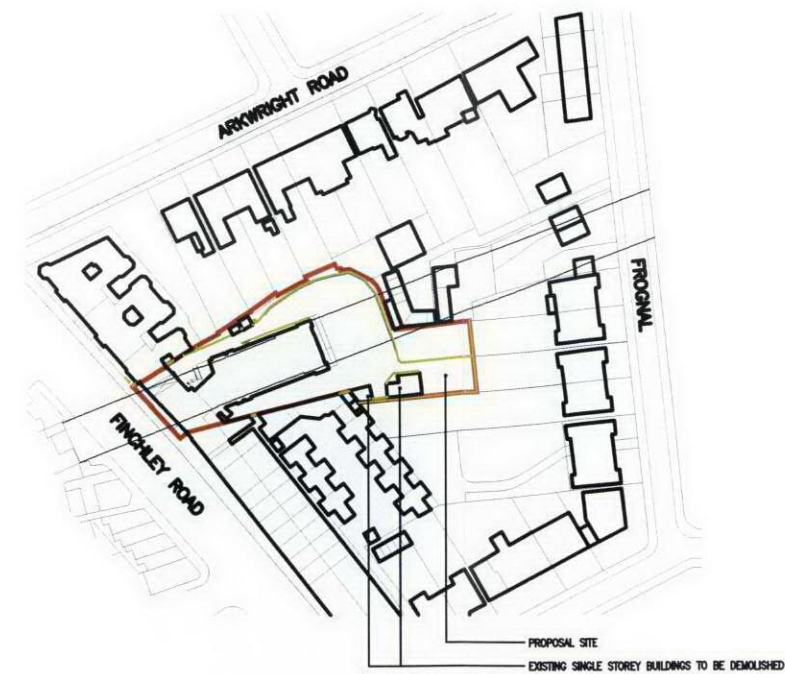
**APPENDIX E**

**Proposed Site Layout Plan**

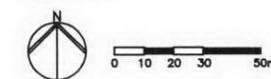




**A** PROPOSED SITE PLAN  
1:500



**B** LOCATION PLAN (EXISTING)  
1:1250



2009-01-10  
2009-01-10  
2009-01-10  
2009-01-10  
2009-01-10

2009-01-10	2009-01-10	2009-01-10	2009-01-10	2009-01-10
2009-01-10	2009-01-10	2009-01-10	2009-01-10	2009-01-10

**JESTICO + WILES**

1 Colney Street, London NW1 2NP  
Tel: 020 7333 0000  
Fax: 020 7333 0001  
E mail: [info@jestico-wiles.com](mailto:info@jestico-wiles.com)  
ARCHITECTS JESTICO + WILES

PROJECT OASIS  
PRIME HOUSE REAR SITE  
TINDALL OVERSEAS

SITE PLAN AND LOCATION PLAN  
(LOWER GROUND FLOOR LEVEL)

2009-01-10, 1:000  
2009-01-10  
2009-SK-0117

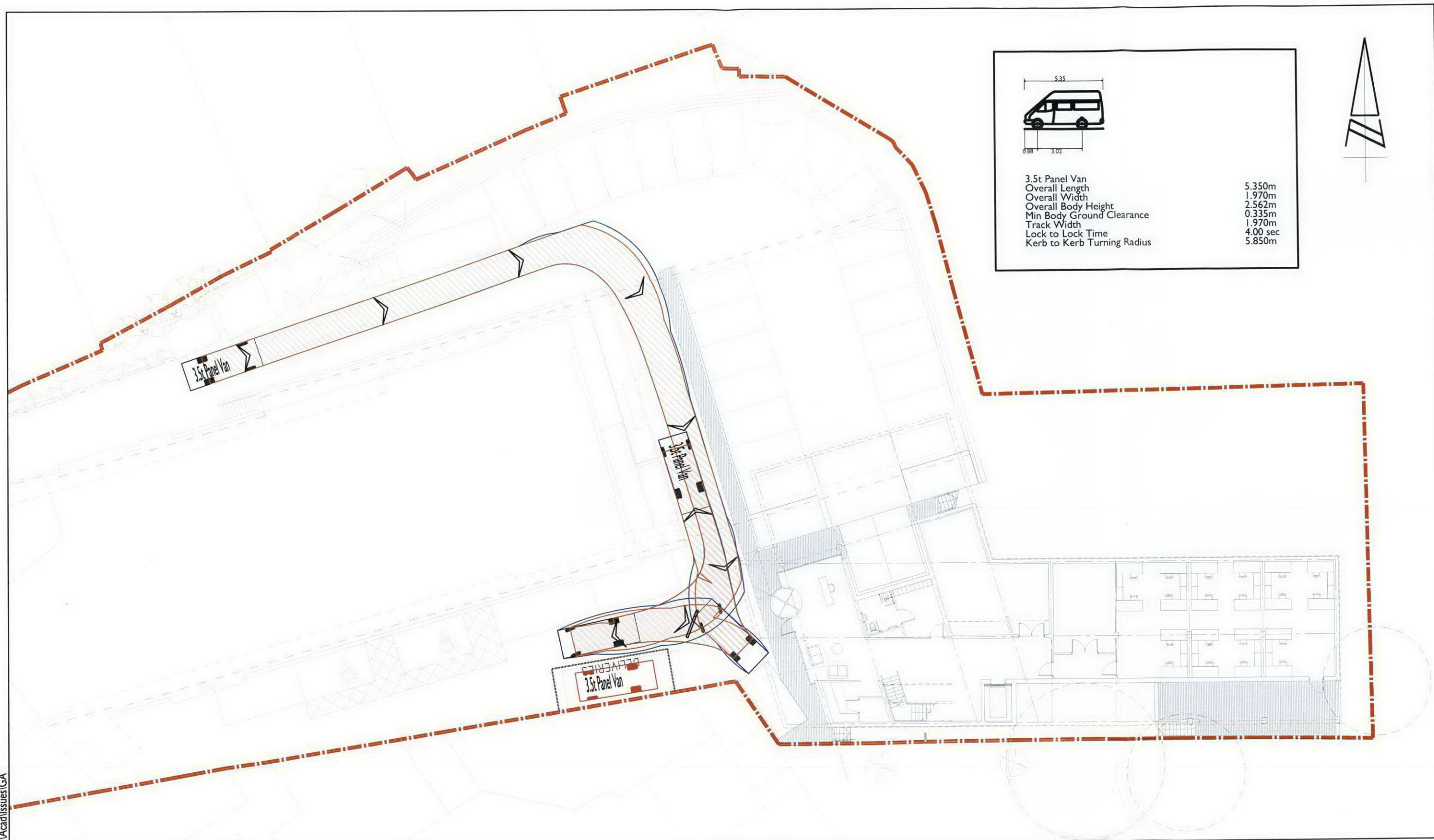
P2



**APPENDIX F**

**Delivery Vehicles TRACK  
Plots**

ITB2085 Project Oasis, Finchley\Tech\Acad\Issues\GA



Grove House, Lutyens Close, Chineham  
Basingstoke, Hampshire, RG24 8AG  
www.i-transport.co.uk

Tel: 01256 338640  
Fax: 01256 338644

REV	DATE	BY	DESCRIPTION	CHK	APD
A	07.12.07	P.R	ARCHITECT PLAN UPDATED DWG No. 2069-SK-0112	JCO	JCO
STATUS: DRAFT					

TITLE: DELIVERY VAN TRACK PLOT	
PROJECT: PROJECT OASIS LAND TO THE REAR OF 202-204 FINCHLEY ROAD, CAMDEN	CLIENT: TINDALL OVERSEAS

DRAWING No: ITB2085-GA-002		
PROJECT No: ITB2085		REV: A
SCALE @ A3: 1:250	CHECKED: E.C	APPROVED:
FILE REF: ITB2085-GA-002	DRAWN: P.R	DATE: MAY'07



## **APPENDIX G**

## **TRICS Outputs**

**TRIP RATE CALCULATION SELECTION PARAMETERS:**

Land Use : 02 - EMPLOYMENT  
Category : A - OFFICE

Selected regions and areas:

01 GREATER LONDON  
BT BRENT 1 days  
WH WANDSWORTH 1 days

**Main parameter selection:**

Parameter: Gross floor area  
Range: 408 to 12528 (units: sqm)

Date Range: 01/01/98 to 28/06/02

Selected survey days:

Wednesday 1 days  
Friday 1 days

Selected survey types:

Manual count 2 days  
Directional ATC Count 0 days