



## **Centre Point**

4475

Internal Refit of Level 25

Listed Building Application

Design Statement & Additional Illustrative Material

January 2008

---

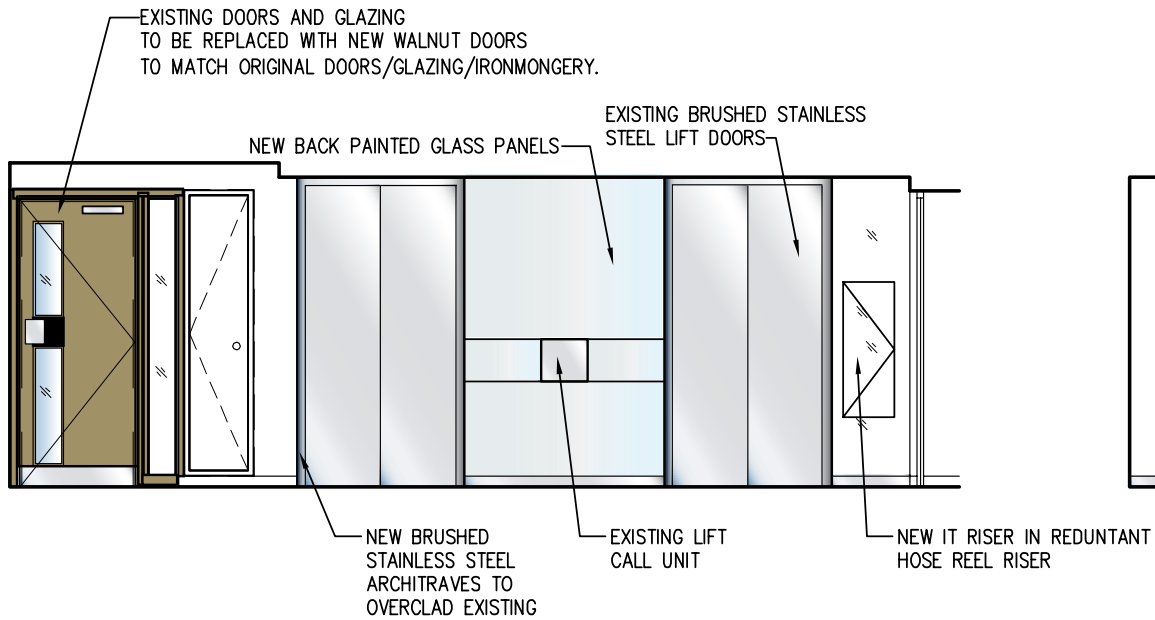
**ROLFE JUDD**

Ref: K:4475/DOC/4475-DOC-070823-A4 Listed building application(level 25).indd

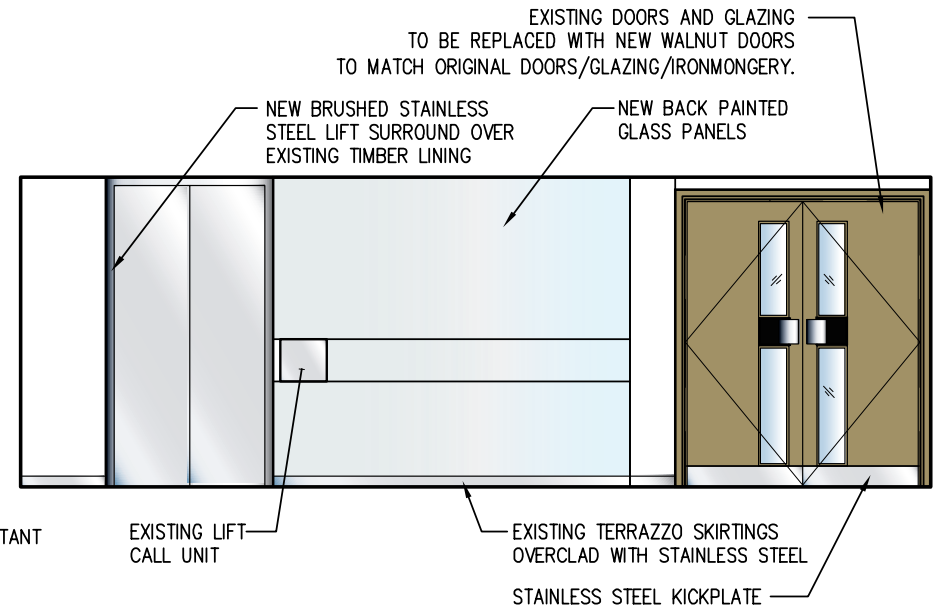
[www.rolfe-judd.co.uk](http://www.rolfe-judd.co.uk)

Old Church Court  
Claylands Road  
The Oval  
London SW8 1NZ  
T: 020 7556 1500  
F: 020 7556 1501  
E: [info@rolfe-judd.co.uk](mailto:info@rolfe-judd.co.uk)  
W: [www.rolfe-judd.co.uk](http://www.rolfe-judd.co.uk)

Typical Lift Lobby

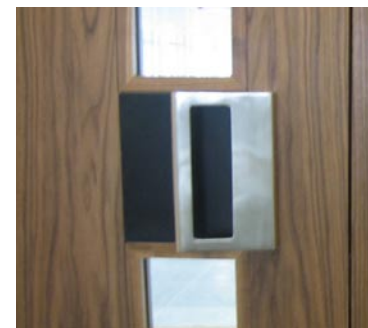
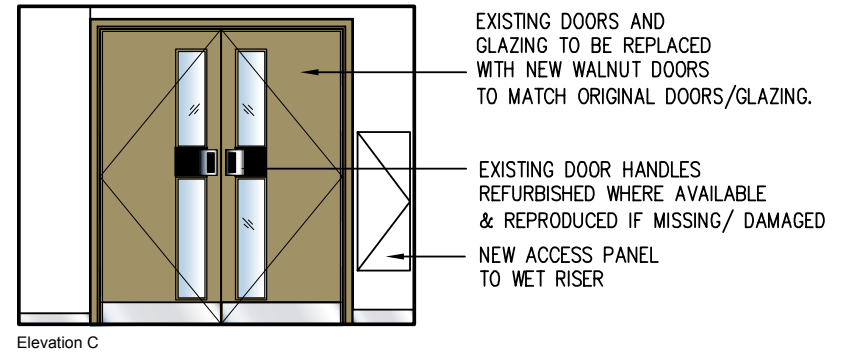


Elevation A



Elevation B

### Typical Lift Lobby



Replica door handles to match originals

## General Office Finishes

---



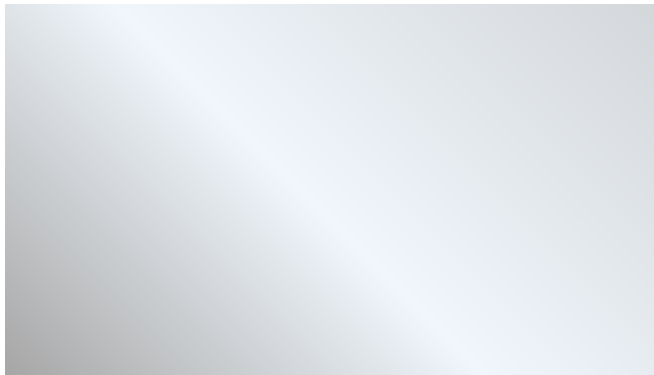
Carpet tile



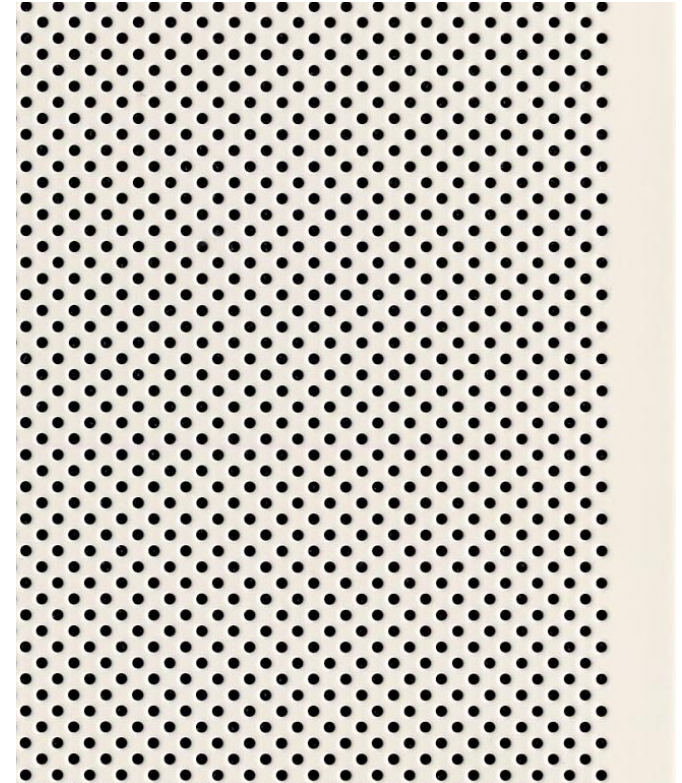
American walnut timber veneer



Back painted glass



Brushed stainless steel



Ceiling tile

---

Listed Building Application - Additional Illustrative Material

**ROLFE JUDD**

[www.rolfe-judd.co.uk](http://www.rolfe-judd.co.uk)

## Office Ceiling and Lighting



Typical office space



Office



Ceiling tile



Recessed down lights

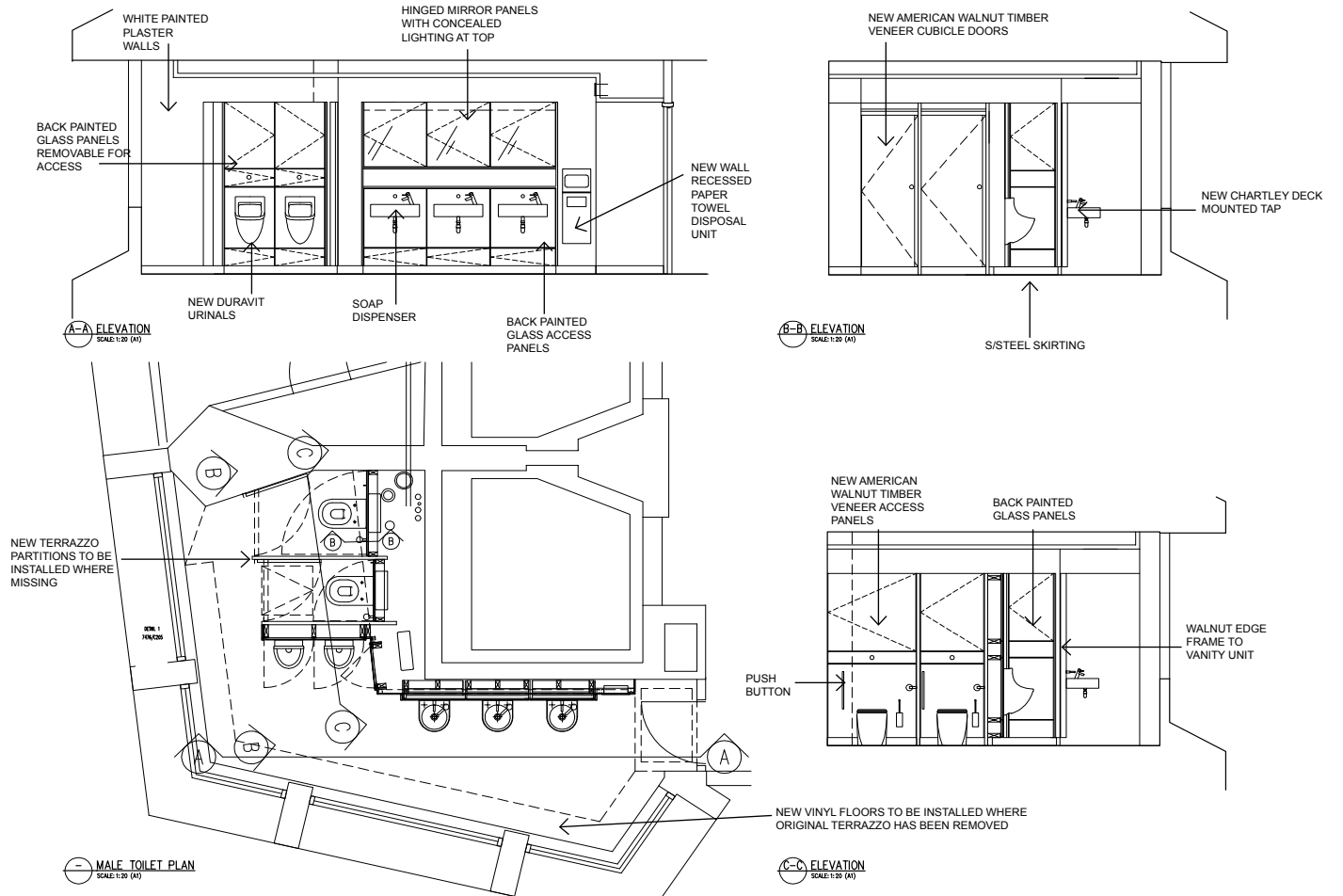


Listed Building Application - Additional Illustrative Material

**ROLFE JUDD**



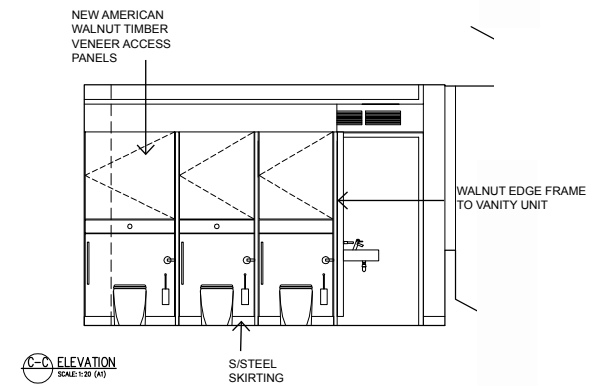
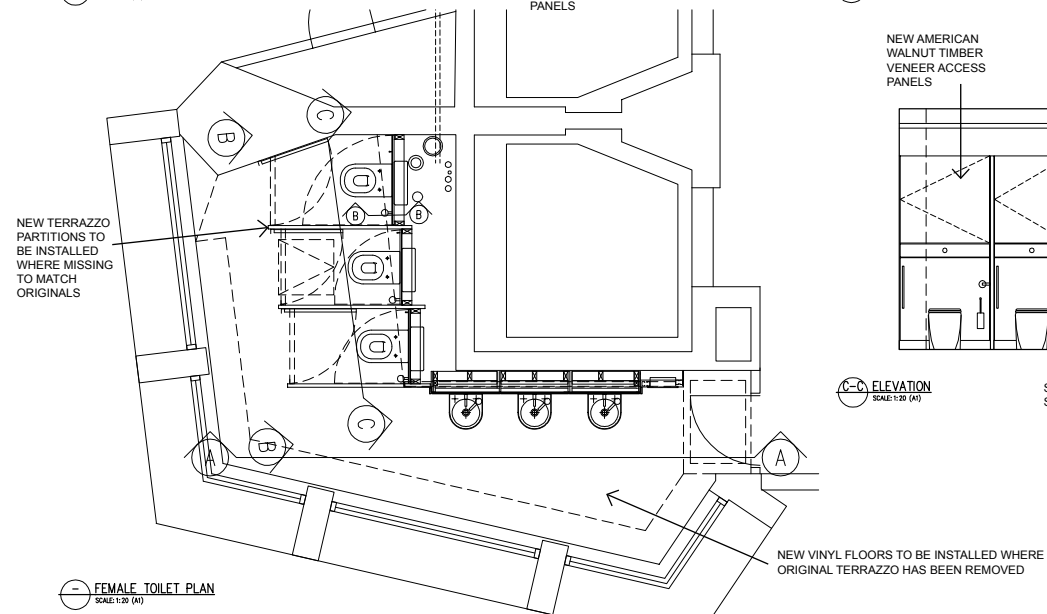
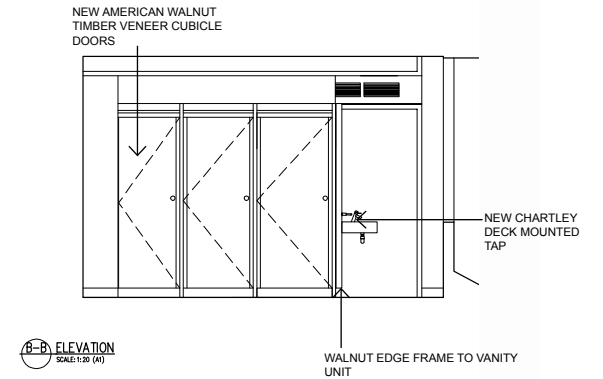
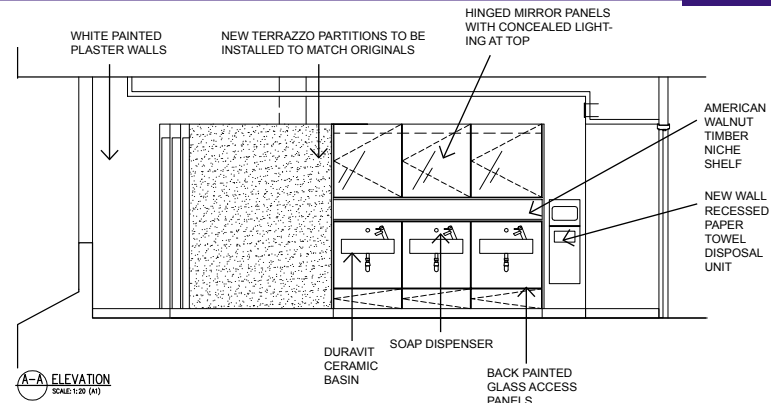
## Typical Male Toilet



Listed Building Application - Additional Illustrative Material

**ROLFE JUDD**

## Typical Female Toilet



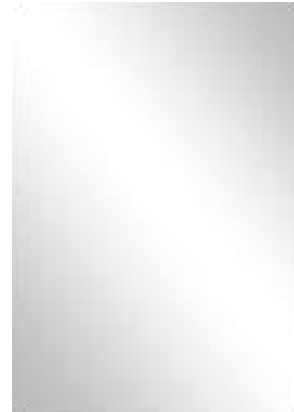
Listed Building Application - Additional Illustrative Material

**ROLFE JUDD**

## Toilet Finishes



American walnut timber veneer



Brushed stainless steel



Terrazzo partition



Floor finish



Back painted glass



Listed Building Application - Additional Illustrative Material

**ROLFE JUDD**

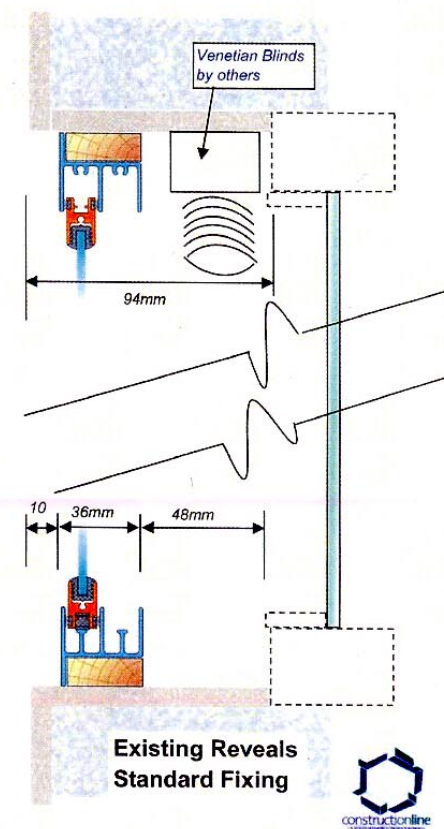
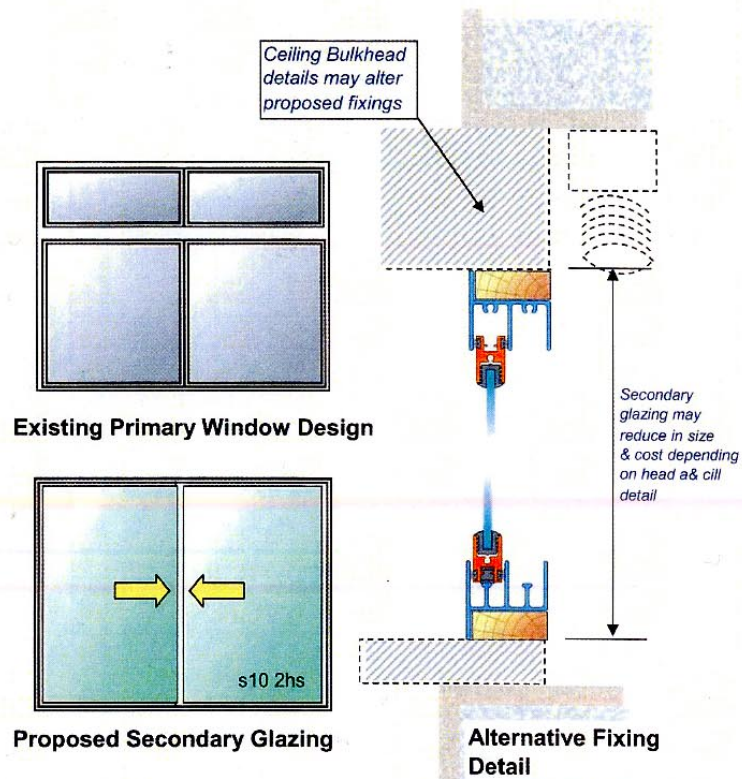


## Proposed Secondary Glazing

selectaglaze™



Glass and Glazing Federation



Listed Building Application - Additional Illustrative Material

ROLFE JUDD

### Existing Condition Images



1



2

- Replace office entrance doors with new American Walnut doors and replica handles to match originals;
- Remove Existing raised floor and ramp, replace with new.
- Remove redundant cupboards.

#### Centre Point 25th Floor Office Area

To be read in conjunction with diagrammatic existing floor plans

Listed Building Application - Additional Illustrative Material

**ROLFE JUDD**

### Existing Condition Images



3



4

- Remove perimeter casings and replace with drylining and secondary glazing with integrated blinds.
- Strip out non-original fixtures and fittings generally.

### Centre Point 25th Floor Office Area

To be read in conjunction with diagrammatic existing floor plans

Listed Building Application - Additional Illustrative Material

**ROLFE JUDD**

### Existing Condition Images



5



6

- Remove redundant perimeter casing and non-original partitions, suspended ceiling, lighting and flooring.

#### Centre Point 25th Floor Office Area

To be read in conjunction with diagrammatic existing floor plans

Listed Building Application - Additional Illustrative Material

ROLFE JUDD

### Existing Condition Images



7



8

- Replace riser doors with new white painted doors, frames and architraves to match.
- Replace office entrance doors with American Walnut doors and replica handles to match originals.

### Centre Point 25th Floor Office Area

To be read in conjunction with diagrammatic existing floor plans

Listed Building Application - Additional Illustrative Material

**ROLFE JUDD**



### Existing Condition Images

- Strip out existing kitchenette and redundant heater casings, replace riser doors with new.



9



10

**Centre Point 25th Floor Office Area**  
To be read in conjunction with diagrammatic existing floor plans

Listed Building Application - Additional Illustrative Material

**ROLFE JUDD**

## Existing Condition Images



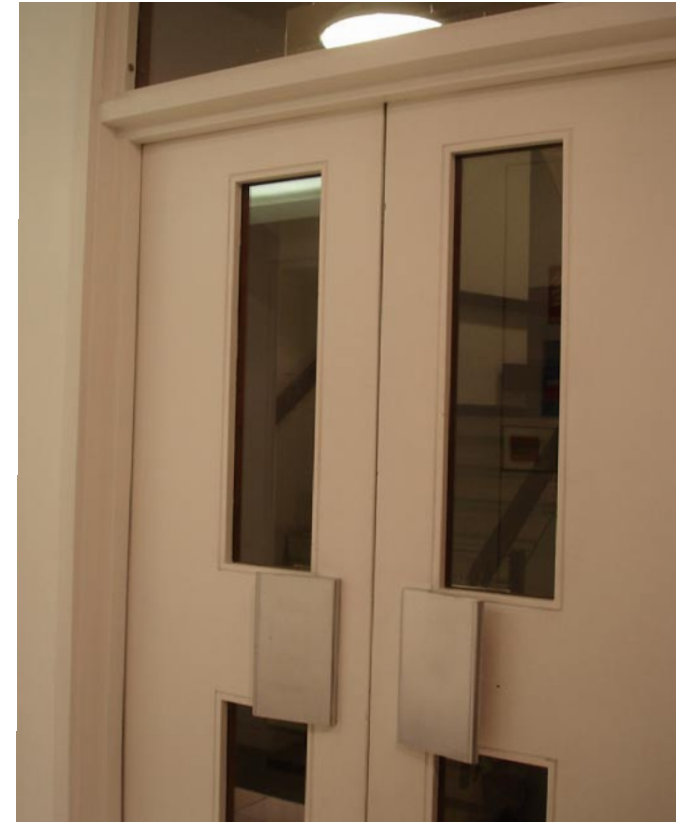
16

- Remove non-original tiling and carpet, replace with new carpet tiles.



12

- Remove non-original bulkhead and lighting.
- New glass panels to lift walls.



13

- Replace with new American Walnut doors and replica handles to match originals.

**Centre Point 25th Floor North Core**  
To be read in conjunction with diagrammatic existing floor plans

Listed Building Application - Additional Illustrative Material

**ROLFE JUDD**

## Existing Condition Images

---



14

- Replace doors with new American Walnut doors and replica handles to match originals.



15

- Remove white paint to original timber beading and restore.

### Centre Point 25th Floor North Core

To be read in conjunction with diagrammatic existing floor plans

Listed Building Application - Additional Illustrative Material

---

**ROLFE JUDD**

### Existing Condition Images



16



17

- Remove all non-original general fixtures and fittings.
- New stainless steel overcladding to lift surround and Skirting.
- New IT riser and wet riser access panels.
- Remove existing perimeter bulkhead and lighting.

**Centre Point 25th Floor North Core**  
To be read in conjunction with diagrammatic existing floor plans

Listed Building Application - Additional Illustrative Material

**ROLFE JUDD**

## Existing Condition Images

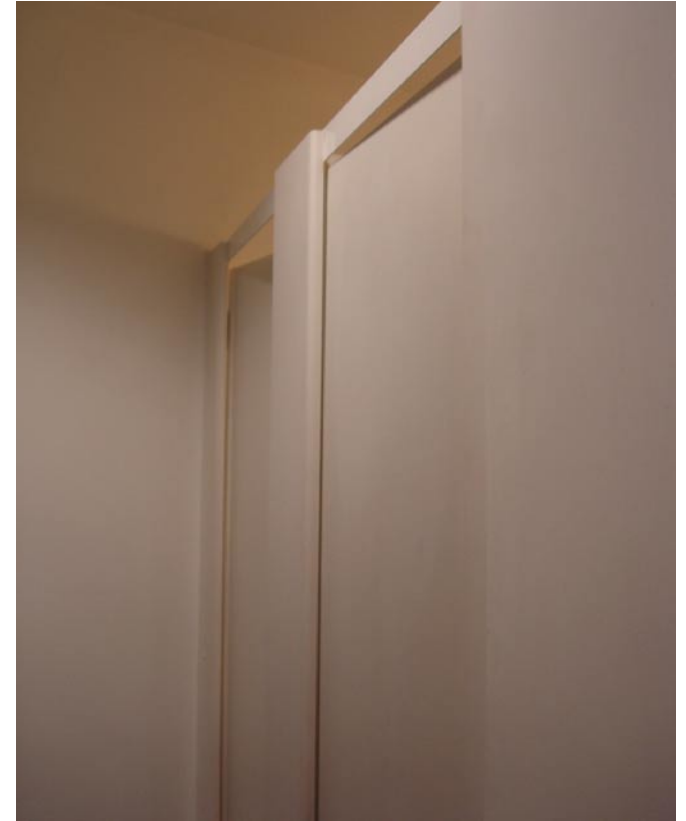


18

- Toilet interior non-original, generally all non-original fittings to be removed. New Terrazzo cubicle partitions to match originals to be installed.



19



20

### Centre Point 25th Floor Male Toilets

To be read in conjunction with diagrammatic existing floor plans

Listed Building Application - Additional Illustrative Material

**ROLFE JUDD**



## Existing Condition Images



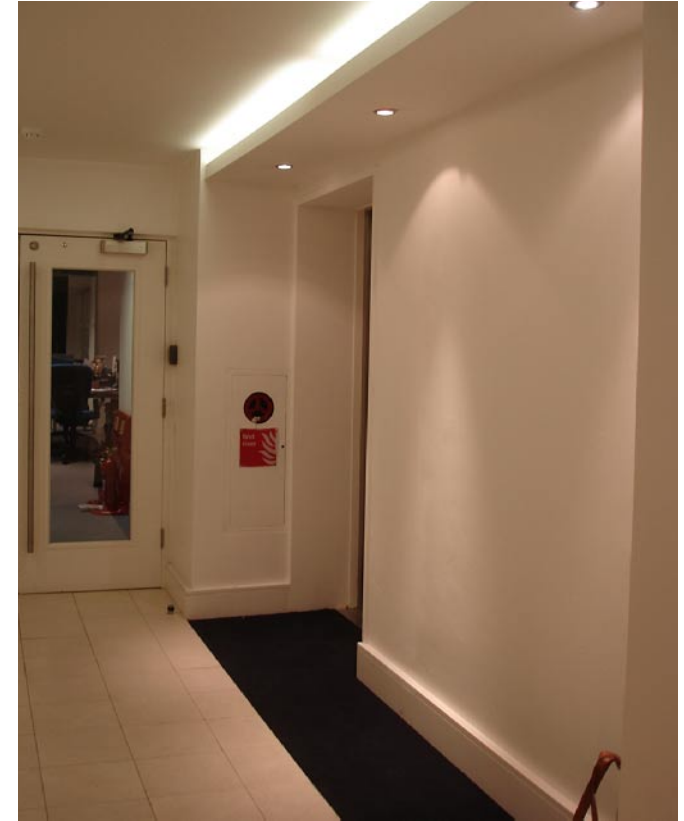
21

- Original window guard rails have been removed. Replace with new timber painted guard rails to match originals.



22

- Remove non-original tiling and carpet, replace with new.



23

**Centre Point 25th Floor South Core**  
To be read in conjunction with diagrammatic existing floor plans

Listed Building Application - Additional Illustrative Material

**ROLFE JUDD**

## Existing Condition Images



24



25



26

- New stainless steel lift surrounds and skirtings.
- New American Walnut veneer doors with replica ironmongery to match originals.

**Centre Point 25th Floor South Core**  
To be read in conjunction with diagrammatic existing floor plans

Listed Building Application - Additional Illustrative Material

**ROLFE JUDD**

## Existing Condition Images



27

- Toilet interior generally all non-original, strip out and remove.



28

- Strip back white paint or original timber beading and restore.



29

- Original flooring has been removed, new vinyl flooring to be installed.

### Centre Point 25th Floor Female Toilets

To be read in conjunction with diagrammatic existing floor plans

Listed Building Application - Additional Illustrative Material

**ROLFE JUDD**

## Existing Condition Images



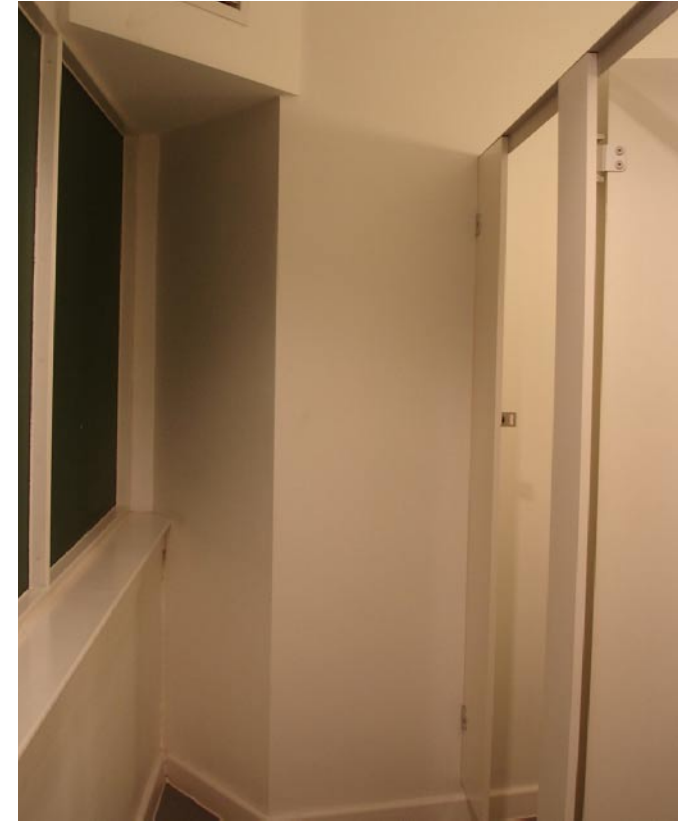
30

- Install new Terrazzo cubicle partitions to match originals where missing.



31

- New American Walnut timber veneer cubicle doors and panels.



32

### Centre Point 25th Floor Female Toilets

To be read in conjunction with diagrammatic existing floor plans

Listed Building Application - Additional Illustrative Material

**ROLFE JUDD**

### Existing Condition Images



33



34

- Remove all non-original fixtures and fittings generally.

#### Centre Point 25th Floor Female Toilets

To be read in conjunction with diagrammatic existing floor plans

Listed Building Application - Additional Illustrative Material

**ROLFE JUDD**