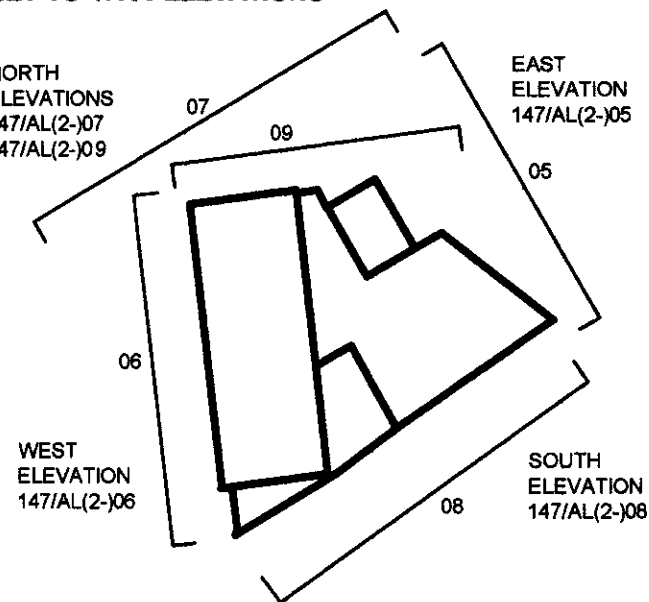


KEY TO 1:100 ELEVATIONS

NORTH
ELEVATIONS
147/AL(2-07
147/AL(2-09

EAST
ELEVATION
147/AL(2-05



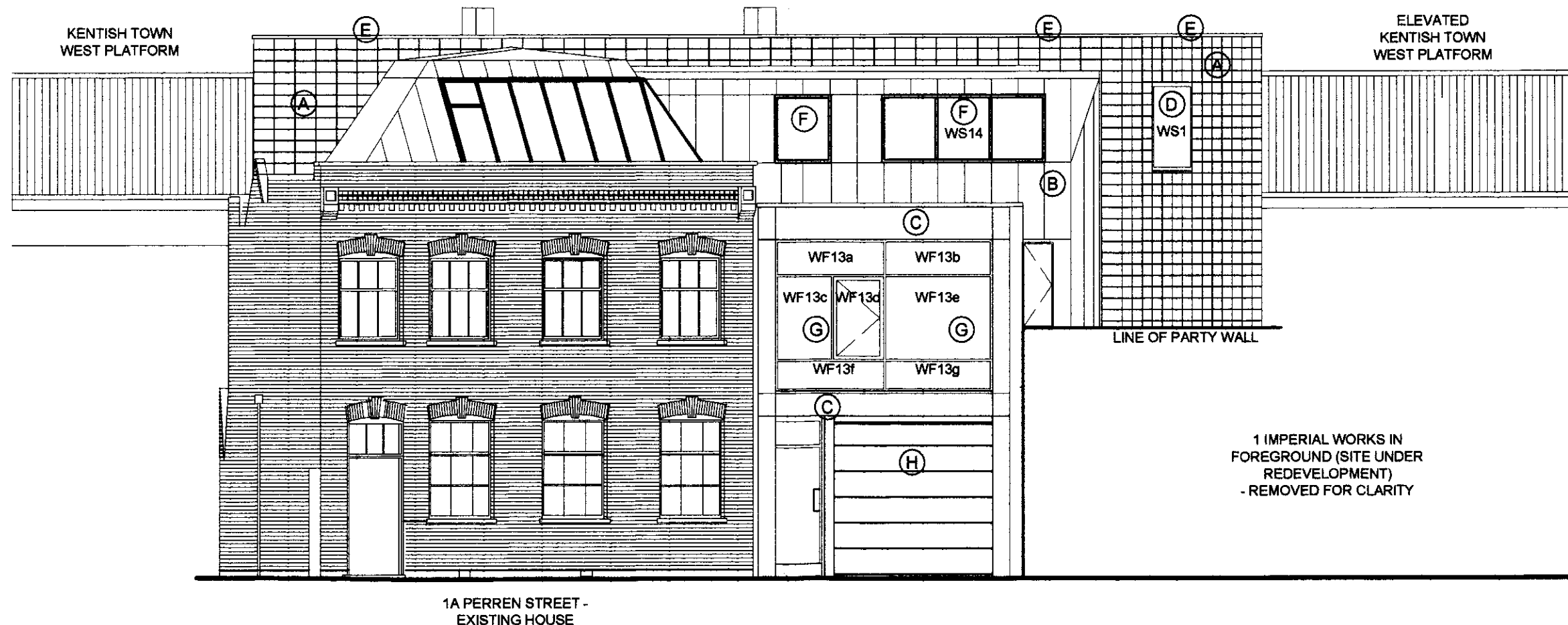
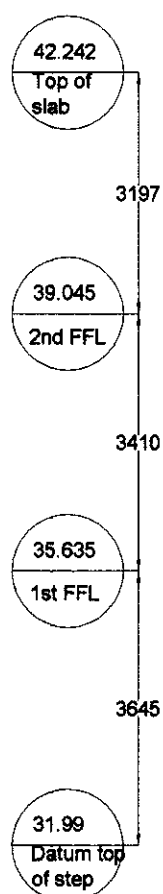
WEST
ELEVATION
147/AL(2-06

SOUTH
ELEVATION
147/AL(2-08

- (A) Blockwork to 1st and 2nd floors of 3 storey rear block adjacent to railway.
Forticrete Florentine MTH27 facing blocks or similar, stack-bonded. Mortar coloured to match blocks, recessed with bucket-handle pointing
Ref. sample submitted by applicant
- (B) Mansard roof and vertical cladding to wedge-shaped link block and north facade of entrance area.
Terne Coated Steel cladding with standing seams (to match existing mansard roof).
Ref. 147/AA(47)104 and sample images

- (C) Steel rainscreen cladding to front entrance area (east facade) facing Perren Street and part of east and south elevations of courtyard
6mm hot-dip galvanised steel plate with 50mm profile depth
Ref. 147/M255
- (D) Steel frame windows in block walls (A) to north, west and south elevations of 3 storey rear block.
Fixed light, clear glass, galvanised steel frame externally.
Ref. detail drawing 147/AA(31)102
- (E) Terne Coated Steel copings to parapet of 2nd storey blockwork
Ref. typical details 147/AA(47)104 and sample images

- (F) Roof lights to mansard roof of link block.
Sealed in-line double glazing units with roof finish flashed over frame. To match existing mansard. Pitch to be 40 degrees.
Ref. Phase 1 details by M. Herbert 2006-2, 2006-3, 2006-4 (dimensions and pitch will vary from those shown)
- (G) Steel frame windows within steel rainscreen cladding (C)
Clear glass, galvanised steel frame. W20 system by Crittall or similar.
Ref. Crittall details and sample images
- (H) Garage door to front entrance area (east).
Insulated sectional overhead door by Ring-gard or similar. Finish to be buff coloured Polyester Powder Coating
Ref. detail drawing 147/AA(31)103 and catalogue image



Notes & Revisions
October 2007: 147/P2/24 superseded
Rev C0: 28.11.07 Blockwork setting-out, mansard roof level, front facade setting-out updated
Rev P1: 17.12.07 Approval of details

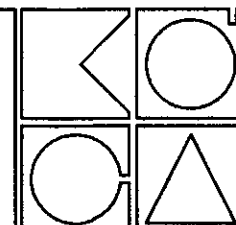
Kennedy O' Callaghan Architects

70 Cowcross Street London EC1M 6EJ Tel 020 7253 6600 Fax 020 7253 9988 kenocall@aol.com

Project title 1a Perren Street Phase 2

Drawing title East Elevation as Proposed

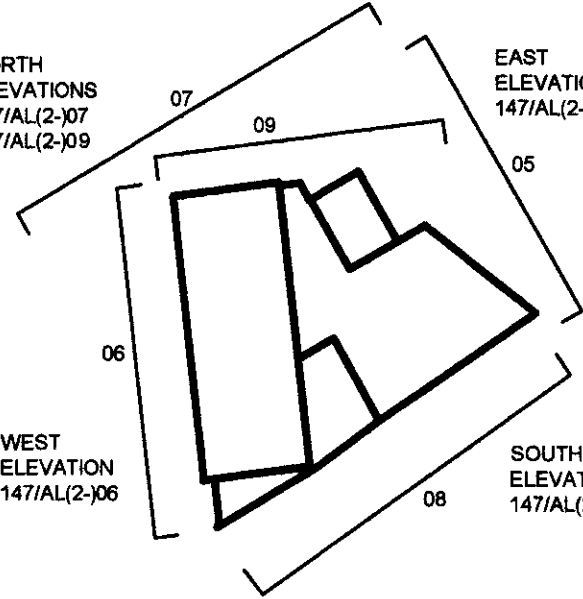
Number 147/AL(2-05 Date October 2007 Scale 1:100@A3 Rev P1



KEY TO 1:100 ELEVATIONS

NORTH
ELEVATIONS
147/AL(2-07
147/AL(2-09

EAST
ELEVATION
147/AL(2-05



(A) Blockwork to 1st and 2nd floors of 3 storey rear block adjacent to railway.

Forticrete Florentine MTH27 facing blocks or similar, stack-bonded. Mortar coloured to match blocks, recessed with bucket-handle pointing

Ref. sample submitted by applicant

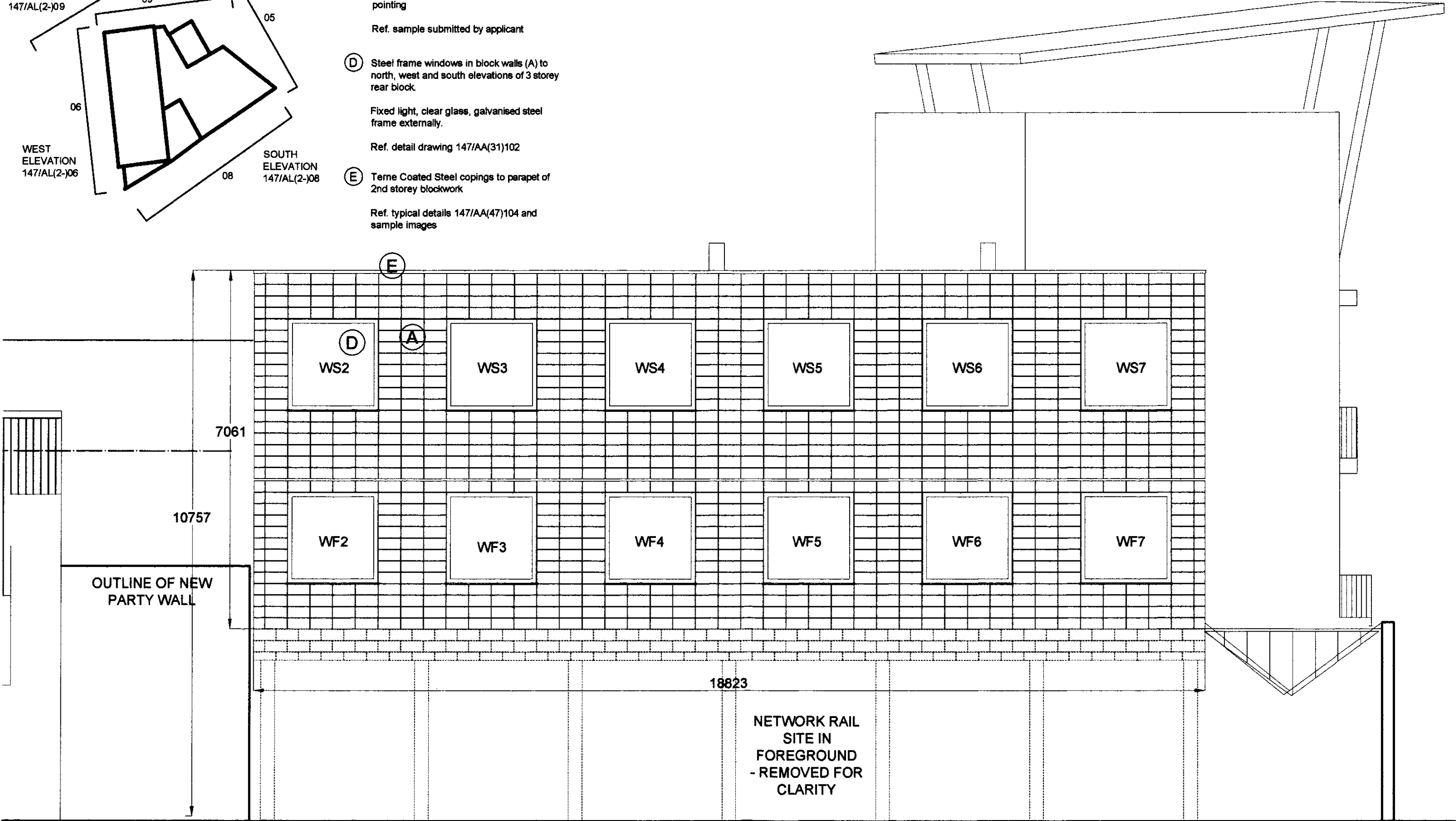
(D) Steel frame windows in block walls (A) to north, west and south elevations of 3 storey rear block.

Fixed light, clear glass, galvanised steel frame externally.

Ref. detail drawing 147/AA(31)102

(E) Terne Coated Steel copings to parapet of 2nd storey blockwork

Ref. typical details 147/AA(47)104 and sample images

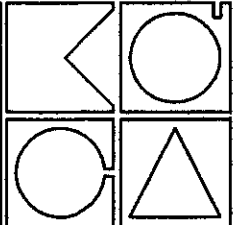


Notes & Revisions
October 2007: 147/P2/26 superseded
Rev C0: 28.11.07 Blockwork setting-out updated, dimension adjusted accordingly
Rev P1: 17.12.07 Approval of details

Kennedy O' Callaghan Architects

70 Cowcross Street London EC1M 6EJ Tel 020 7253 6600 Fax 020 7253 9988 kenocall@aol.com

Project title 1a Perren Street Phase 2
Drawing title West Elevation as Proposed
Number 147/AL(2-06 Date October 2007 Scale 1:100@A3 Rev P1



- (A) Blockwork to 1st and 2nd floors of 3 storey rear block adjacent to railway.

Forticrete Florentine MTH27 facing blocks or similar, stack-bonded. Mortar coloured to match blocks, recessed with bucket-handle pointing

Ref. sample submitted by applicant

- (B) Mansard roof and vertical cladding to wedge-shaped link block and north facade of entrance area.

Terne Coated Steel cladding with standing seams (to match existing mansard roof).

Ref. 147/AA(47)104 and sample images

- (C) Steel rainscreen cladding to front entrance area (east facade) facing Perren Street and part of east and south elevations of courtyard

6mm hot-dip galvanised steel plate with 50mm profile depth

Ref. 147/M255

- (D) Steel frame windows in block walls (A) to north, west and south elevations of 3 storey rear block.

Fixed light, clear glass, galvanised steel frame externally.

Ref. detail drawing 147/AA(31)102

- (E) Terne Coated Steel copings to parapet of 2nd storey blockwork

Ref. typical details 147/AA(47)104 and sample images

- (F) Roof lights to mansard roof of link block.

Sealed in-line double glazing units with roof finish flashed over frame. To match existing mansard. Pitch to be 40 degrees.

Ref. Phase 1 details by M. Herbert 2006-2, 2006-3, 2006-4 (dimensions and pitch will vary from those shown)

- (G) Steel frame windows within steel rainscreen cladding (C)

Clear glass, galvanised steel frame. W20 system by Crittall or similar.

Ref. Crittall details and sample images

- (H) Garage door to front entrance area (east).

Insulated sectional overhead door by Ring-gard or similar. Finish to be buff coloured Polyester Powder Coating

Ref. detail drawing 147/AA(31)103 and catalogue image

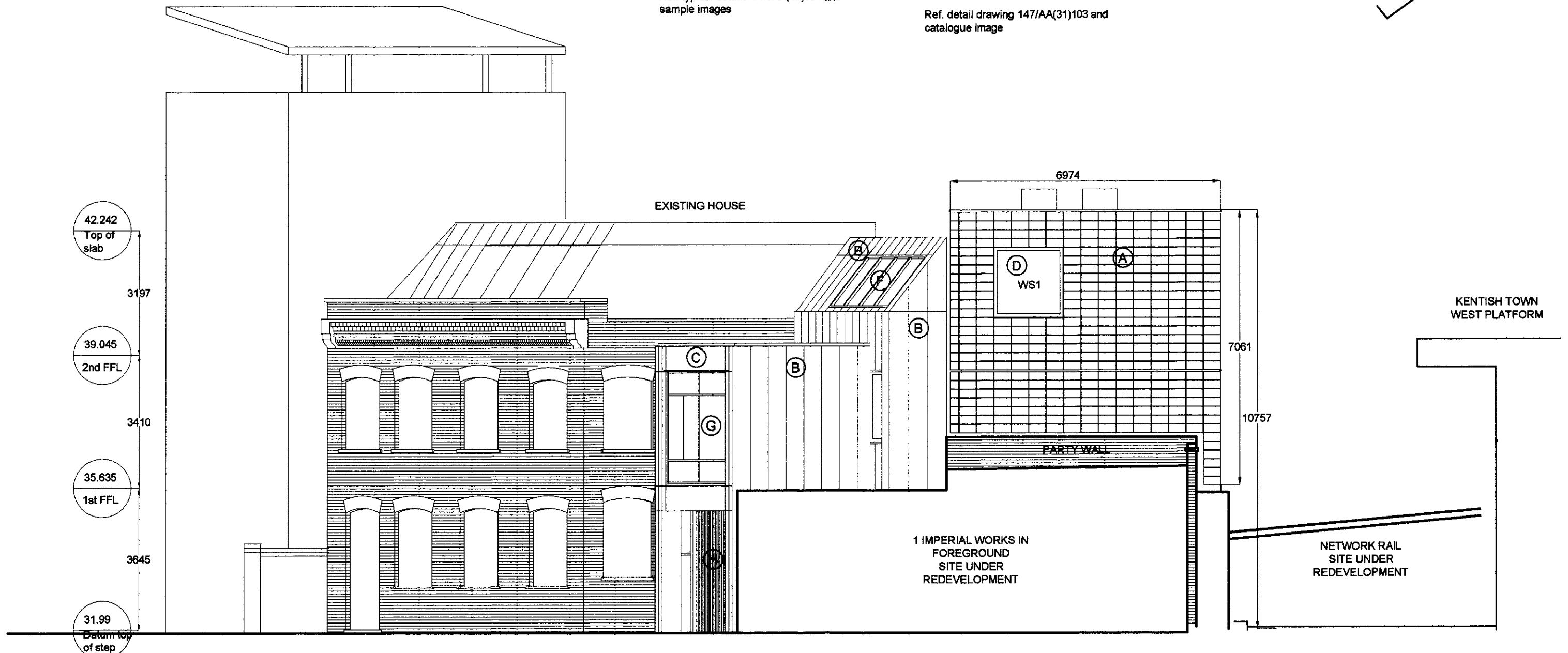
KEY TO 1:100 ELEVATIONS

NORTH
ELEVATIONS
147/AL(2-)07
147/AL(2-)09

EAST
ELEVATION
147/AL(2-)05

WEST
ELEVATION
147/AL(2-)06

SOUTH
ELEVATION
147/AL(2-)08



Notes & Revisions
October 2007: 147/P2/27 superseded
Rev C0: 28.11.07 Blockwork setting-out updated on west block
Rev P1: 17.12.07 Approval of details

Kennedy O' Callaghan Architects

70 Cowcross Street London EC1M 6EJ Tel 020 7253 6600 Fax 020 7253 9888 kenocall@aol.com

Project title 1a Perren Street Phase 2

Drawing title North Elevation as Proposed (orthogonal to grid A)

Number 147/AL(2-)09 Date October 2007 Scale 1:100@A3 Rev P1

