

Sketch of steps see item 9.

Str.Eng to advise on requirements for piers / windposts to all garden walls.

ALL SOULS DEVELOPMENT

B1 UNIT
MAISONETTE 5
ABOVE

HOUSE 4

HOUSE 3

HOUSE 2

FOR BUILDING SETTING OUT SEE GA PLAN 07/187 101

Line of existing cross over

RELOCATED
CAR PARKING BAY

EXISTING
CAR PARKING BAY
TO BE RELOCATED

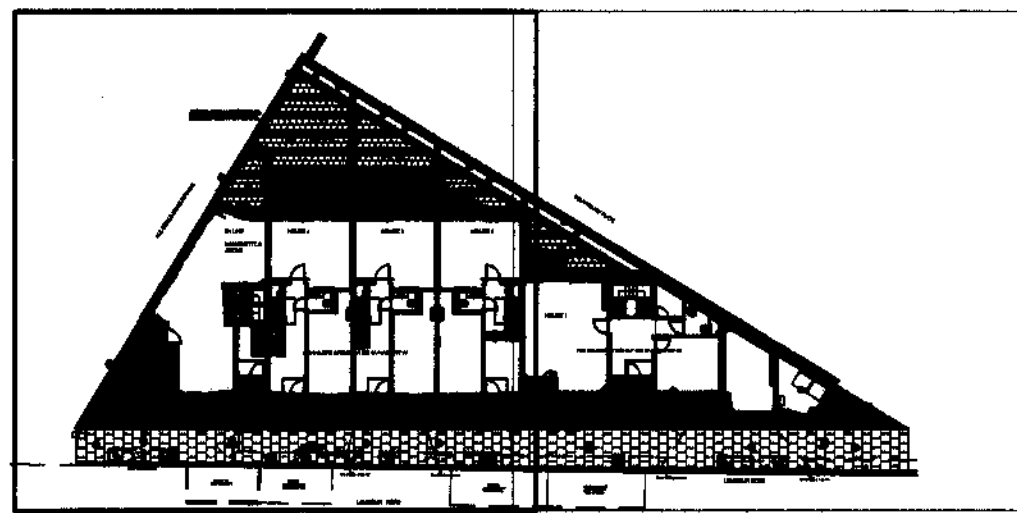
Line of existing cross over

Line of existing cross over

EXISTING
CAR PARKING BAY

DO NOT SCALE
REPORT ERRORS AND OMISSIONS TO THE ARCHITECT
CHECK ALL DIMENSIONS BEFORE FABRICATION

REVISION	TP	CHD	DATE
11	Tender Issue	TP	07.08.07
12	Planning Issue - spacing of cycle stand following comments from planning officer - resubmitted for condition 7	CHD	08.08.08



DRAWING 07.187/ 600 SEE DRAWING 07.187/ 601

1. Frameless glass balustrading to bridge link with stainless steel handrail to top. Main floor. See drawing 600.
2. Frameless glass balustrading with stainless steel handrail to top and stainless steel edge plate to base. See drawing 600.
3. Planter and seating. See drawing 600.
4. Soft landscaping. See drawing 600.
5. Garden wall. 215mm thick brick K10360 2000mm high above ead. FFL on highest side with zinc aluminium coping to top on CPC bed. F30/780. Polymer based render finish. Type M21.
6. Rear garden paving. Marshalls 60mm thick flamed granite pavers, colour Light Beige, laid in staggered bond of 600x600 and 400x600 squares with 5mm wide white A-1 sand cement mortar joints. Paving laid on 25mm thick bed of 3:1 sand cement mix on 100mm min compacted hardcore bed. Perimeter 150mm wide x 75mm deep pea shingle on 100mm min compacted hardcore bed. See drawing 600.
7. Front paving. 100x100x100mm thick cropped granite setts by Marshalls, colour Mid Grey. 5-6 mm wide light grey 4:1 sand cement mortar joints. Paving laid on 50mm thick bed of 3:1 sand cement mix on MOT type 1 compacted hardcore bed.
8. Paving to lightwells. 100x100x100mm thick flamed granite setts by Marshalls, colour Light Grey. 5-6 mm wide light grey 4:1 sand cement mortar joints. Paving laid on 50mm thick bed of 3:1 sand cement mix to falls to gutters. Perimeter of 100mm wide x 75mm deep pea shingle.
9. Steps: Marshalls Conversation steps. Silver grey 250mm wide. Cut to suit falls. See sketch.
10. Cycle stand: bike stand, Autopac Ltd Sheffield style washmark. Galvanneal ref 1800300A.
11. Trelis: See drawing 600.
12. New Garden Party Wall to All Souls: SEE PARTY WALL AWARD AND WHITEYBRO INFORMATION. & drawing 612.
13. New low level wall and railings: 210mm thick brick wall, F10/110A, 450mm high above FFL, brick on edge plinth. Stainless steel handrail 450mm above plinth with stainless steel balustrading flat plates @ less than 100 centres. Counter sunk fittings.
14. New 800mm high x 100mm wide stainless steel gate to match design of railings. With stainless steel slide surface barrel bolt.
15. New paving beyond boundary to public highway - To comply with London Borough of Camden Highway standards. Remove existing crosswalks and paving and kerbs and install new.
16. Drainage to road interface: Marshalls Slot Mono drain with Marshalls Base channel unit. For detail design see Str.Eng specification.

○ Bolts: Furnibolts Ltd (tel 0208783000) 'Wharf' bolted. 8mm stainless steel finish WHA 452, fixed to concrete haunched footing.

CONTINUED ON DRAWING 07.187/ 601

CONTRACT
150 LOUDOUN ROAD

SCALE	1:50 @A1
DATE	13.08.07
DRAWN	DR
CHECKED	DR
DRAWING NO.	07.187 / 600
REVISION	T2

TITLE
external works GA plan
House 2 to 5

ATP Group
Architects & Building Surveyors