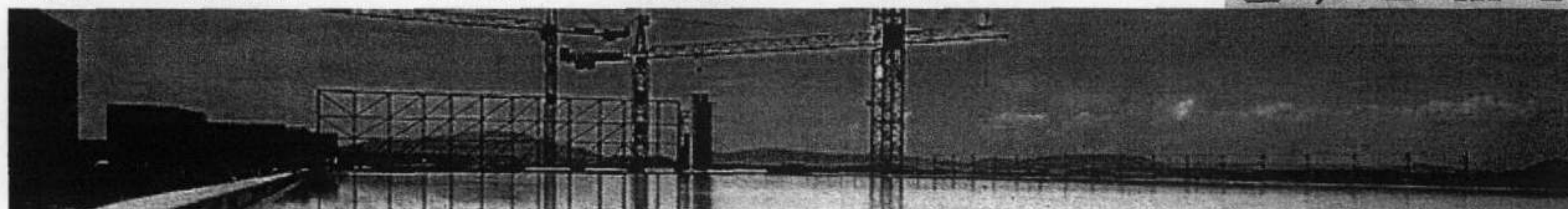


Sarnafil

Your Worldwide Partner for Roofing and Waterproofing Solutions

[News](#)[About us](#)[Contact us](#)[Worldwide](#)[InfoNet](#)[Roofing](#)[Standard Details](#)[Reference Projects](#)[Roofing](#) | [Roofing Systems](#) | [SarnaVert Green Roofing](#) | [Extensive](#)**Roofing Systems**

[Adhered Systems](#)
[Mechanically Fastened](#)
[Loose Laid Ballasted](#)
[SarnaVert Green Roofing](#)
[Biodiverse](#)
[Extensive](#)
[Intensive](#)
[SarnaVert Planting](#)
[Designing and Planning](#)
[Benefits](#)

Extensive Green Roofing Systems

SarnaVert Extensive Green Roofing systems consists of lightweight, naturalistic planting that provides extensive roof cover with minimal maintenance.

These systems provide a wide range of benefits, including:

- Little modification of the roof environment, ensuring suitability for new or refurbishment applications
- Naturalistic style planting systems, that require minimal care, irrigation and maintenance
- A thin layer of lightweight growing mediums, typically between 65mm and 150mm
- A wide range of grass, herbaceous, succulent and moss species, that establish self-sustaining plant communities
- Suitability for use on roof slopes (from 0 to 45° slope), with measures needed from 8° upwards. Pitches greater than 45° can be accommodated subject to design
- A saturated system weight of between 80 to 90 kg m². Lighter variations can be specified, but the membrane will require independent attachment

A typical SarnaVert Extensive warm roof construction will consist of:

- A structural deck
- Vapour control layer
- Thermal insulation
- Sarnafil G476-20TEX or Sarnafil TG66 membrane
- Growing medium
- Planting

The vapour control layers will either be SarnaBituVap, bonded to the substrate with Sarnacol 2142s, or loose laid Sarnavap 2000E. The main benefit of SarnaBituVap in this application, is that it enables the membrane to be installed in waterproof compartments or 'cells'.

Following inspection of the finished roof by a Sarnafil Field Technician, the AquaDrain drainage and protection layer and site specific growing medium are installed, prior to the installation of the chosen method of Extensive greening, either hydroseeding, plug planting or Nature Mat®.

Once installed, the largely self-maintaining closely grown mosses, succulents, herbaceous plants and grasses (that make up the SarnaVert extensive system) develop naturally, with any plants that invade from surrounding areas forming part of the natural fluctuation in the vegetation.

Early consultation with a local Sarnafil Technical Adviser, will assist the correct system specification and construction. This will ensure water storage, substrate formulation and nutrient levels are optimally balanced to sustain the plants for maximum year round performance and environmental benefit.

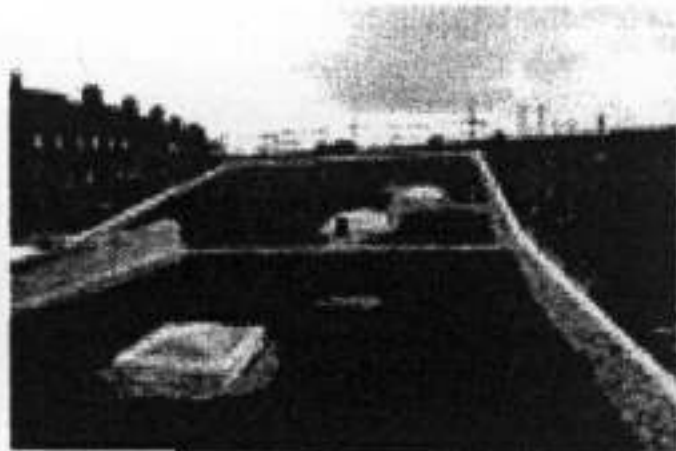
© 2006 Sarnafil Ltd. [Legal Disclaimer](#)



Your Worldwide Partner for Roofing and Waterproofing Solutions

SarnaVert Planting

SarnaVert extensive planting is available in one of three basic specification options depending on the client requirements and budget. Each option utilises the same basic genus 'sedum' to form the core of the SarnaVert extensive planting. Currently over 30 species and cultivars of sedum are available, with alternative ranges of plants constantly increasing through research and system development.



Hydroplant and Seed

Vegetative parts and seeds are spread onto a prepared substrate at a density of 100-150g per m² and covered with a liquid applied organic mulch. After application the plant parts root and the seeds germinate, generating approximately 60% plant cover in 12 months.



Plug Plant, Hydroplant and Seed

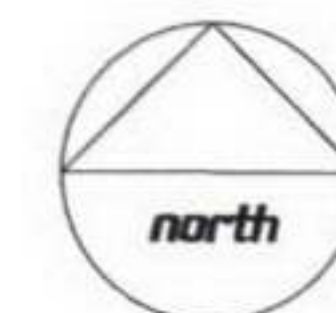
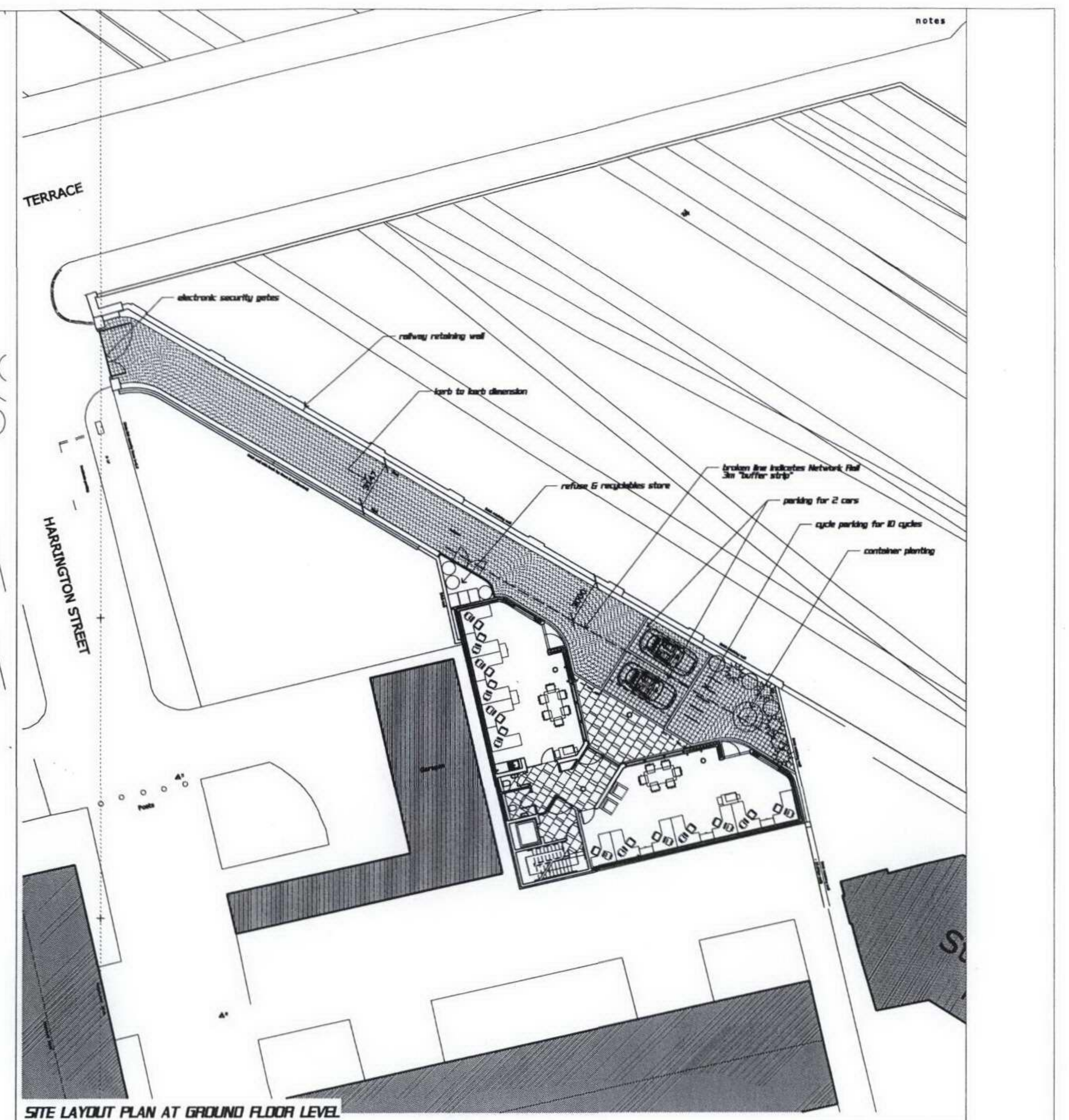
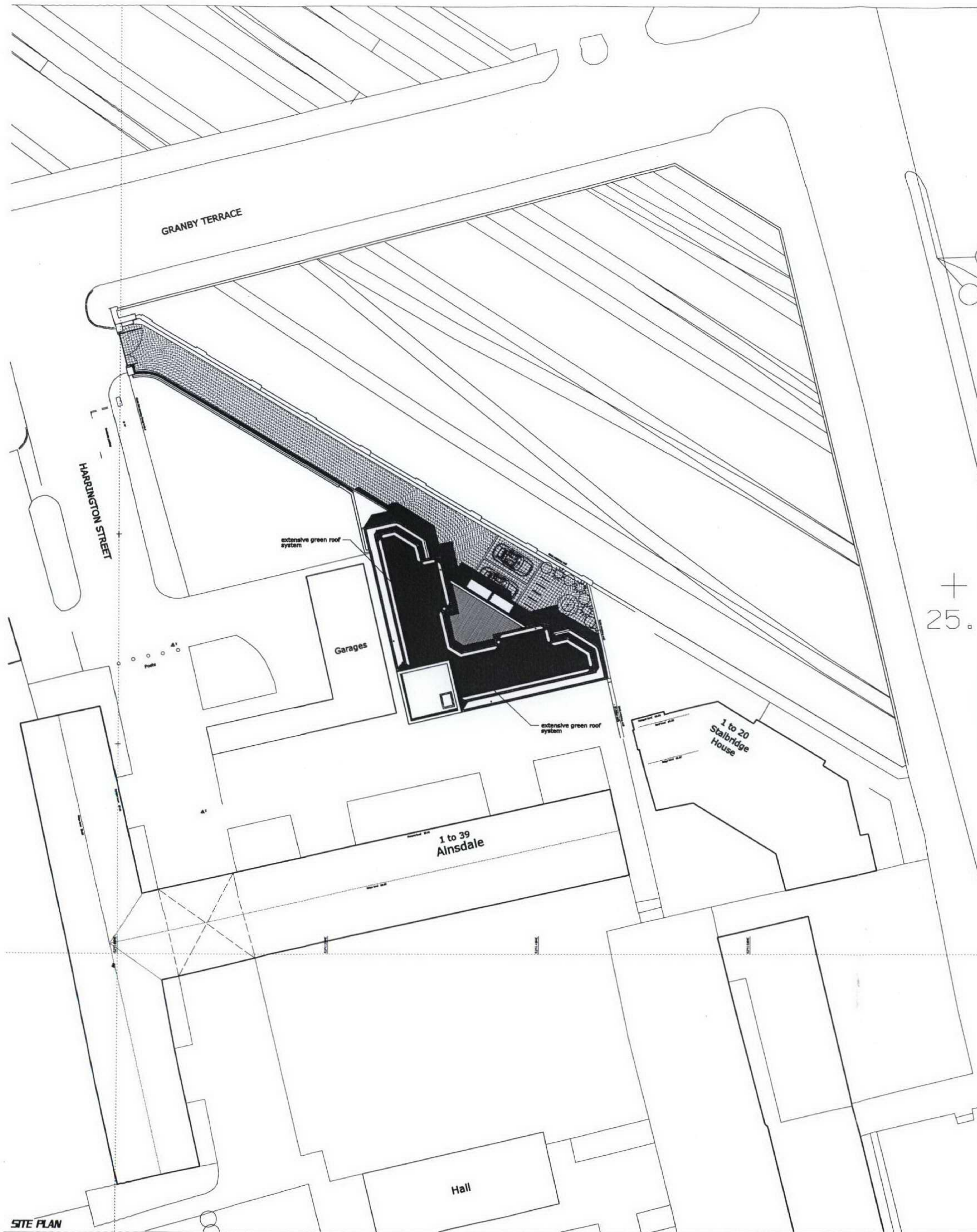
As above, with the addition of rooted plant material (plug plants), hand planted at a density of 16-20 plug plants per m². Approximately 60-70% coverage is achieved in 9 months. Even though coverage is not complete, the appearance is still attractive, particularly if the roof is viewed from the ground. The appearance is that of an Alpine Scree Bed.



Nature Mat® *

Developed and grown in Somerset by our horticultural partners, BHC, Nature Mat® is a pre-grown Sedum based plant layer with a minimum 95% mature plant cover. When matured, the Nature Mat® is rolled, transported to the roof and unrolled onto a prepared substrate to give an 'instant' green roof. In addition to the standard product, Nature Mat® can be contract grown to suit a clients requirements, subject to a 50% pro-forma payment.

* Nature Mat ® is a registered trade mark of Blackdown Horticultural Consultants Ltd.

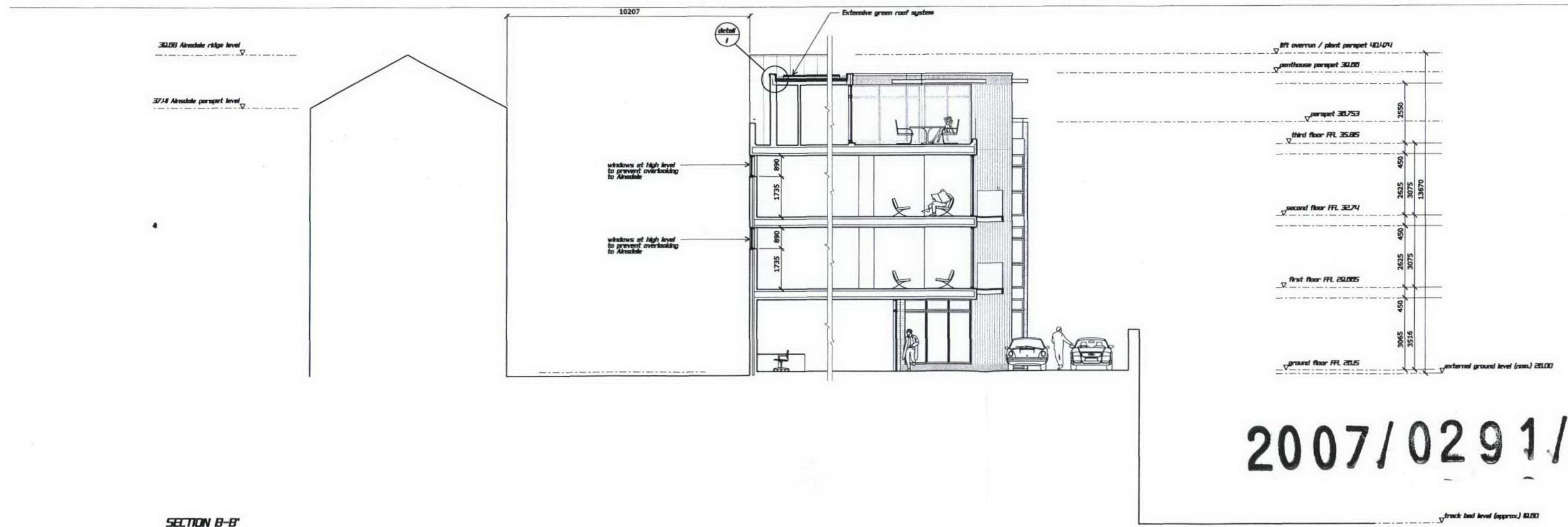
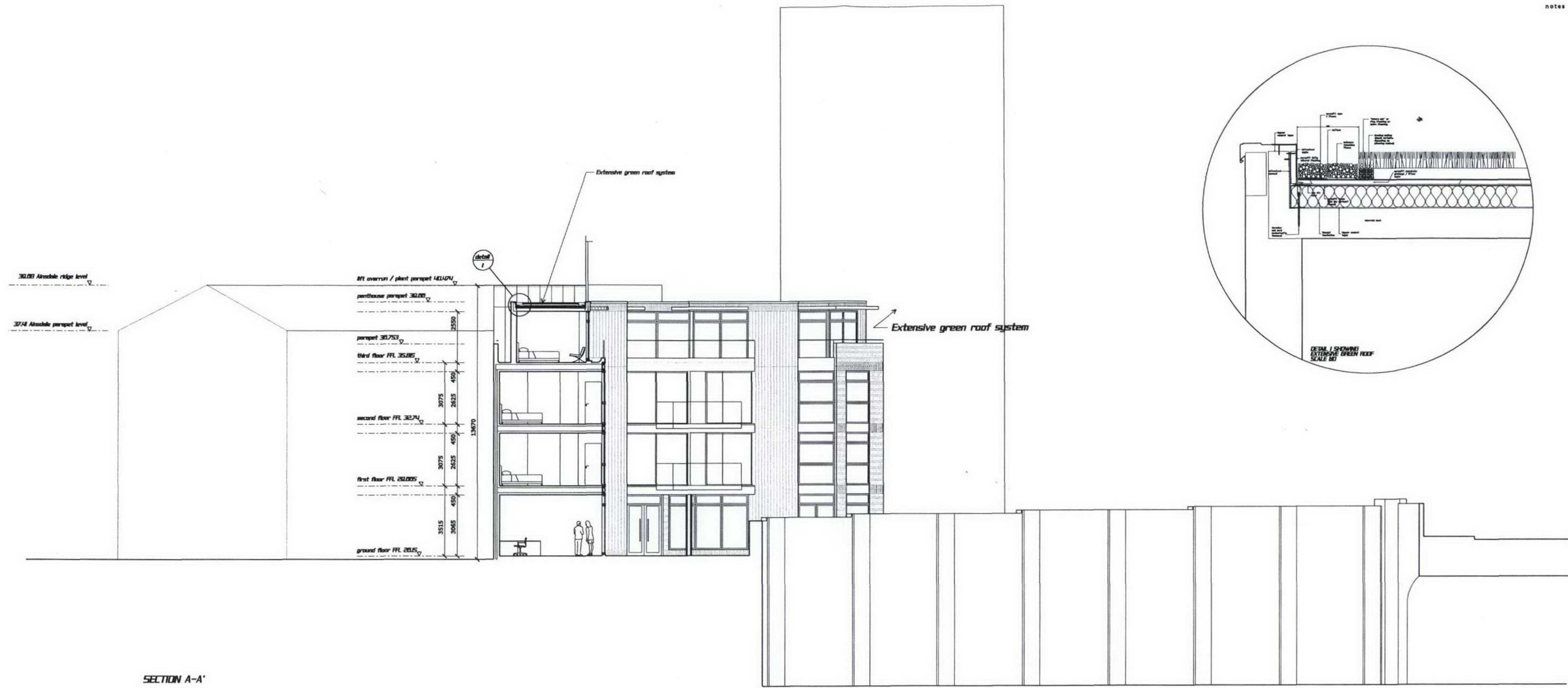


2007/0291/PR 1

B Green roof added A Rooflights omitted		FEB '08 JUNE '07
REV.		DATE
JCNM LIMITED 51 Borough High Street London SE1 1NB T 020 7378 1144 F 020 7378 1144 E info@jcnm.co.uk		
DG Property Consultants		
dwg no.	J06 / 28 / P-100	rev B
scale	1:200 @ A1	date Jan '07
dwg title	SITE (ROOF) PLAN AS PROPOSED & SITE LAYOUT PLAN AS PROPOSED	
project	Proposed Mixed-Use Development at Granby House Granby Terrace London NW1	
status	PLANNING DRAWING	

JCNM architects

notes



B A	Green roof added Rooflights omitted, Level access created.	FEB '08 JUNE '07
	rev.	date
chartered architect		
JCNM LIMITED		
51 Borough High Street London SE1 1NB T 020 7378 1144 F 020 7378 1144 E info@jcnm.co.uk		
arch		
DG Property Consultants		
dwg no.	J06 / 28 / P-300	rev. B
scale	1:100 @ A1	date Jan '07
dwg title	SECTIONS AS PROPOSED	
project	Proposed Mixed-Use Development at Granby House Granby Terrace London NW1	
status	PLANNING DRAWING	

2007/0291/PR

JCNM architects