



Figure 25
Room B4, extensive ducting to be removed and windows overhauled and glazing reinstated.



Figure 26
Ducts and pipework to be removed and existing range restored.

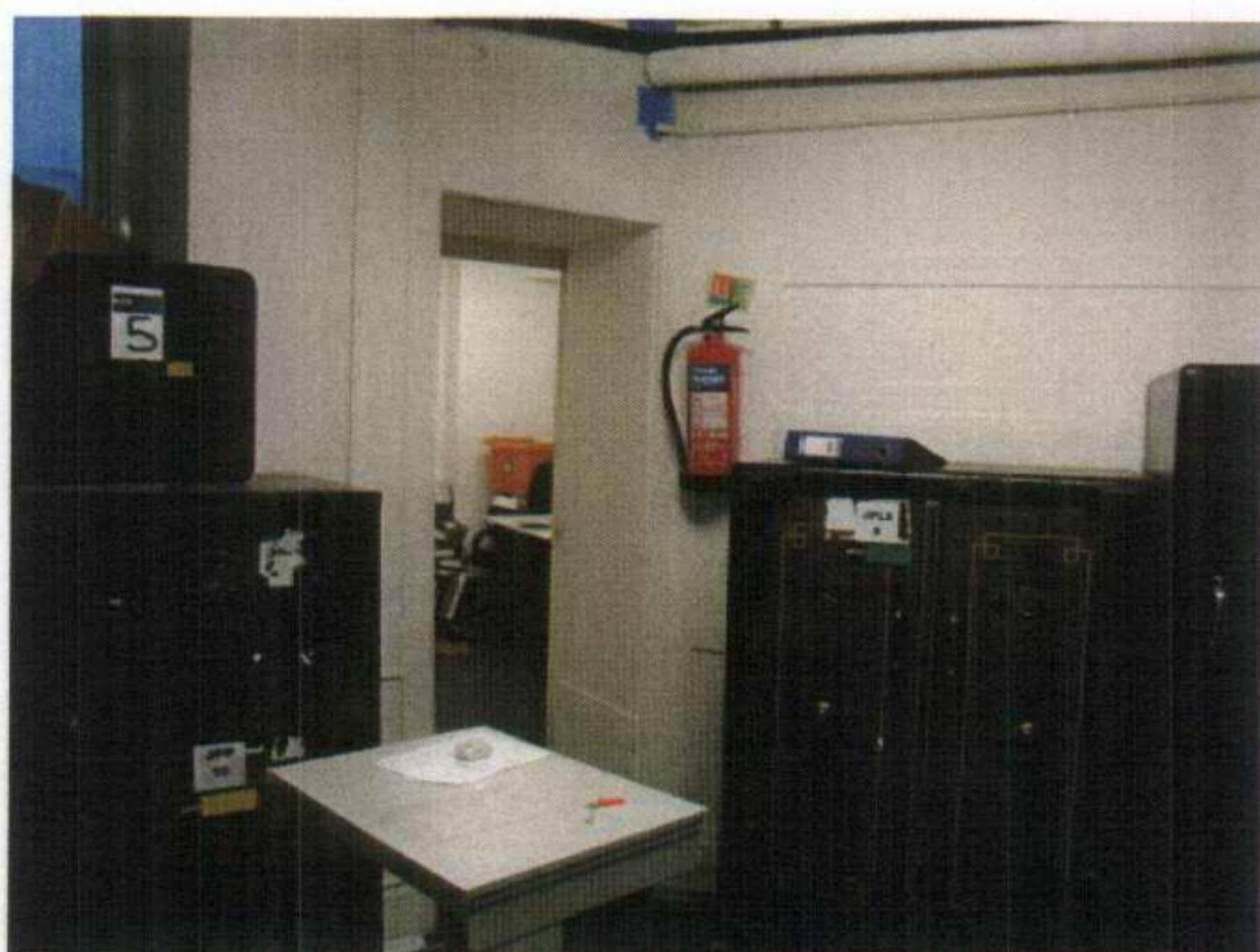


Figure 27
Evidence of simple panelling to B6 and possible fire surround behind.



Figure 28
Riser in stair to no. 11 to remain. Glazed panel in door to be reinstated as solid panel.

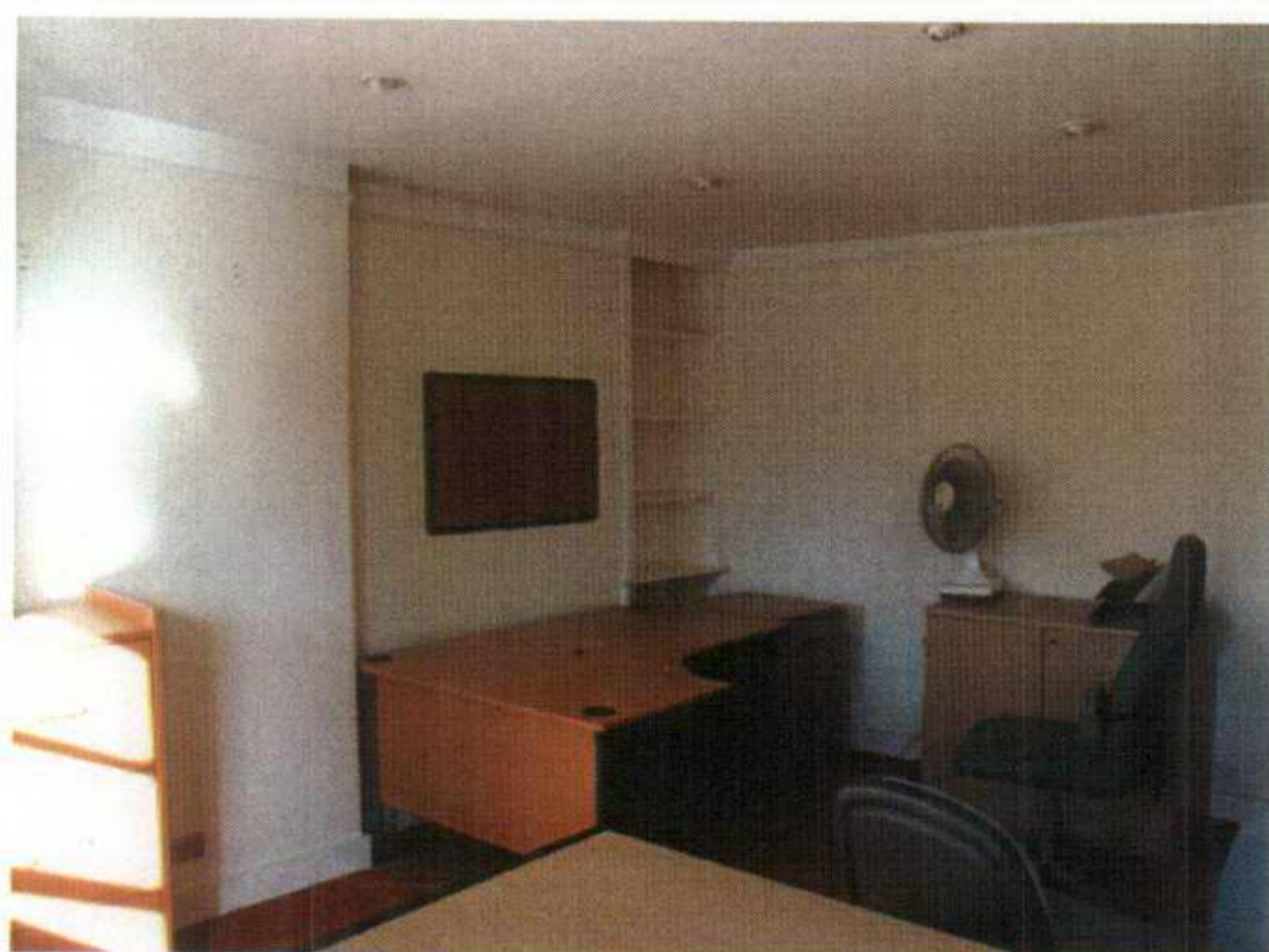


Figure 29
New riser position behind cornice at third floor level in recess



Figure 30
New riser position behind cornice in recess to second floor

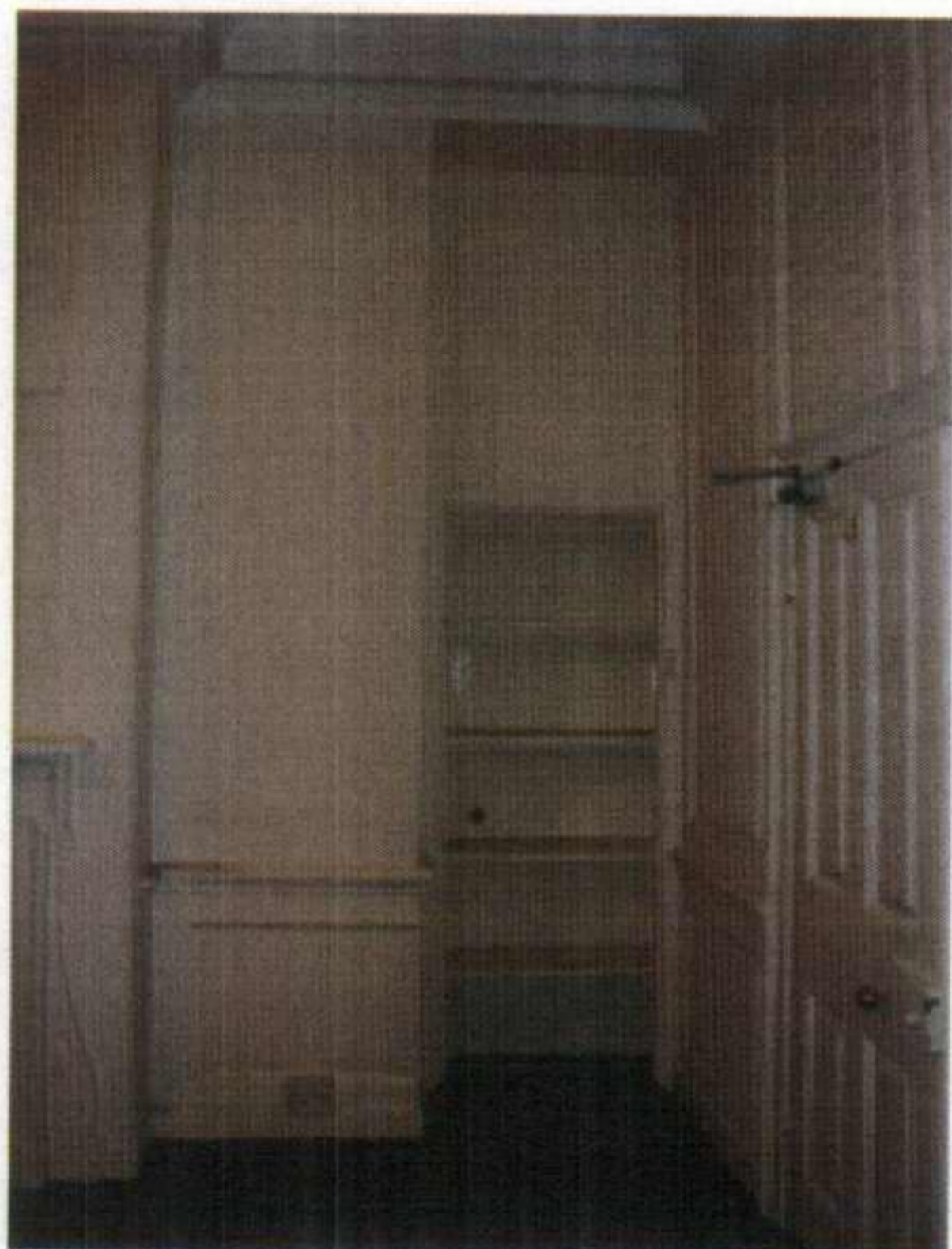


Figure 31
New riser at first floor level to no. 11. Party wall to be blocked up and panelling reinstated in front of riser.



Figure 32
New riser at ground floor behind existing panelling. Possible access panel to be formed.



Figure 33
Existing roof space to no. 11. Conservation rooflights placed in between rafters.



Figure 34
Simple panelling in recesses. Cupboard doors to be reinstated.



Figure 35
Detail of panel and dado



Figure 36
Room B6, duct to corner to be removed, modern tiled insert to fire surround to be replaced with appropriate insert.

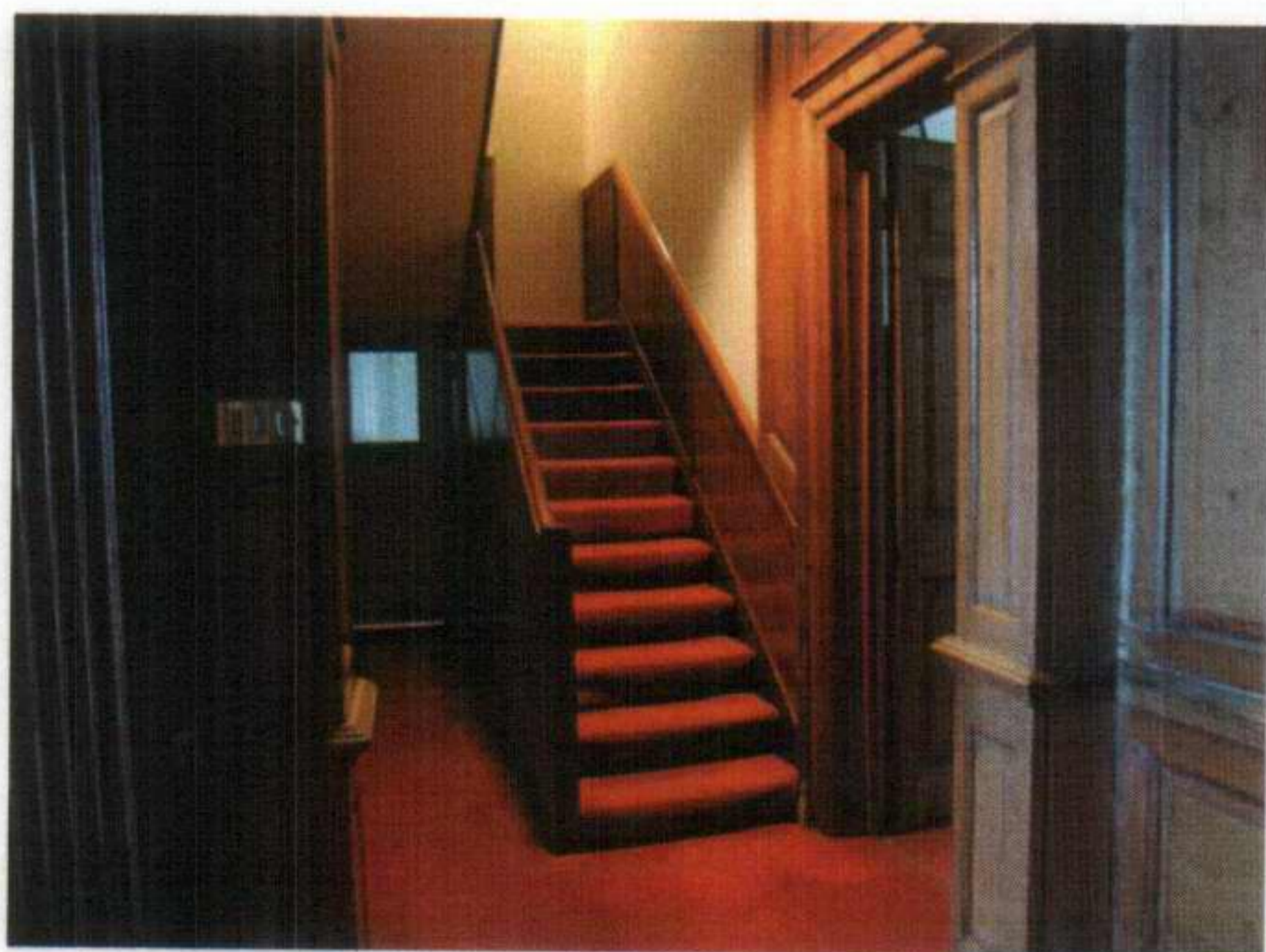


Figure 37
1920's staircase to no.12. Balustrade to be replaced with polished oak handrail and glass panels below.



Figure 38
Room S5, No panelling, proposed new bathroom and dressing room to be formed within space.



Figure 39
Polished oak balustrade, handrail and below dado panelling to stair to no. 12. Stripped panelling above dado to be re-painted.



Figure 40
Room S7 stripped panelling to be repainted. Riser position to remain



Figure 41
Room F19. Where overpanelling occurs, panels to be carefully removed to see if any original panelling remains below.



Figure 42
B25, existing pavement vaults, recently refurbished



Figure 43
Lightwell at front of no. 12



Figure 44
Lightwell at front of no. 11



Figure 45
Room G20, pipes to be removed and existing door re-opened from stairway to basement



Figure 46
Riser located on plain walls to room F18



Figure 47
Existing entrance to modern extension to no. 11 to be replaced with arched window.



Figure 48
High level ducting to be removed and riser located in corner to room S7