

Figure A: 1720

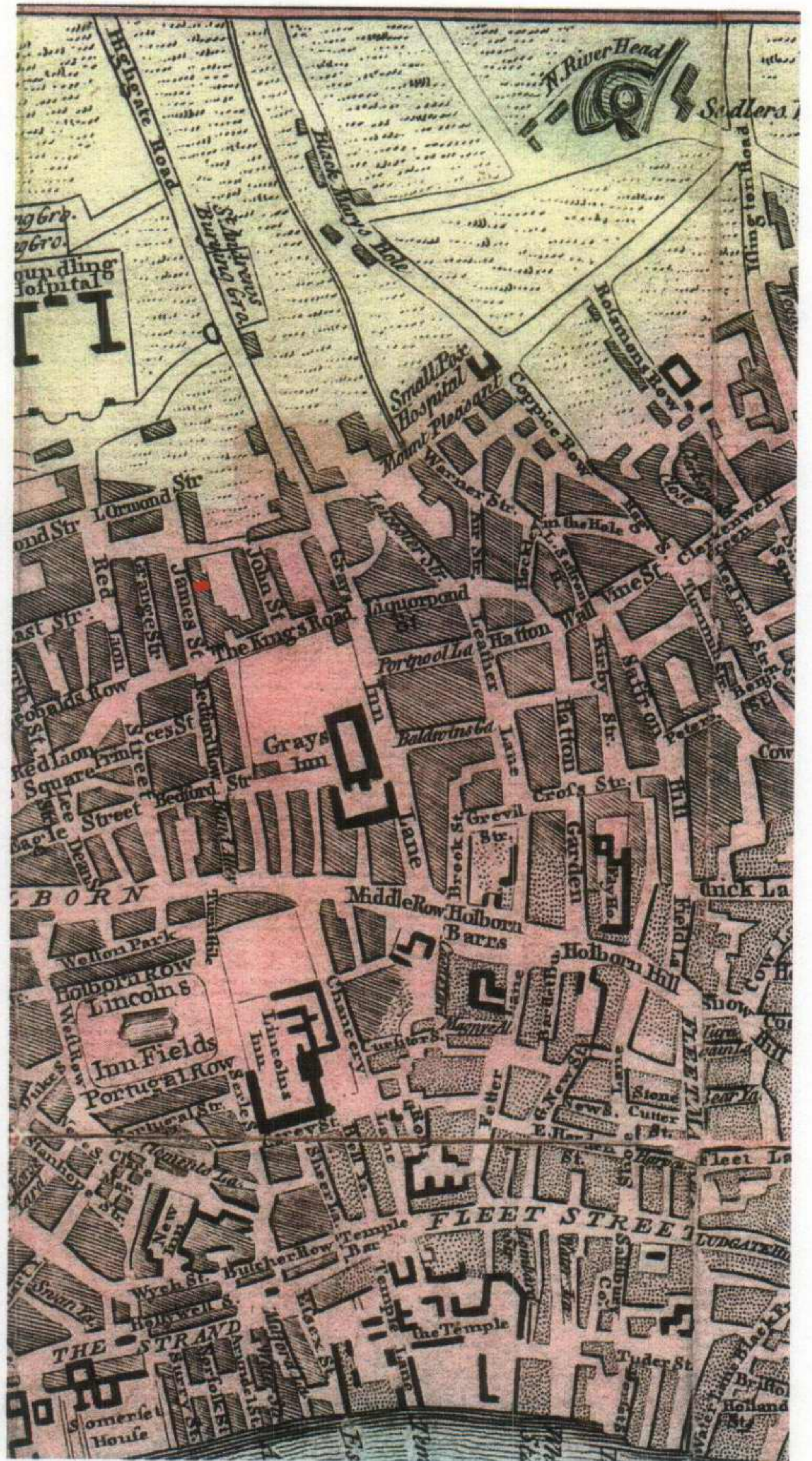


Figure B: 1767



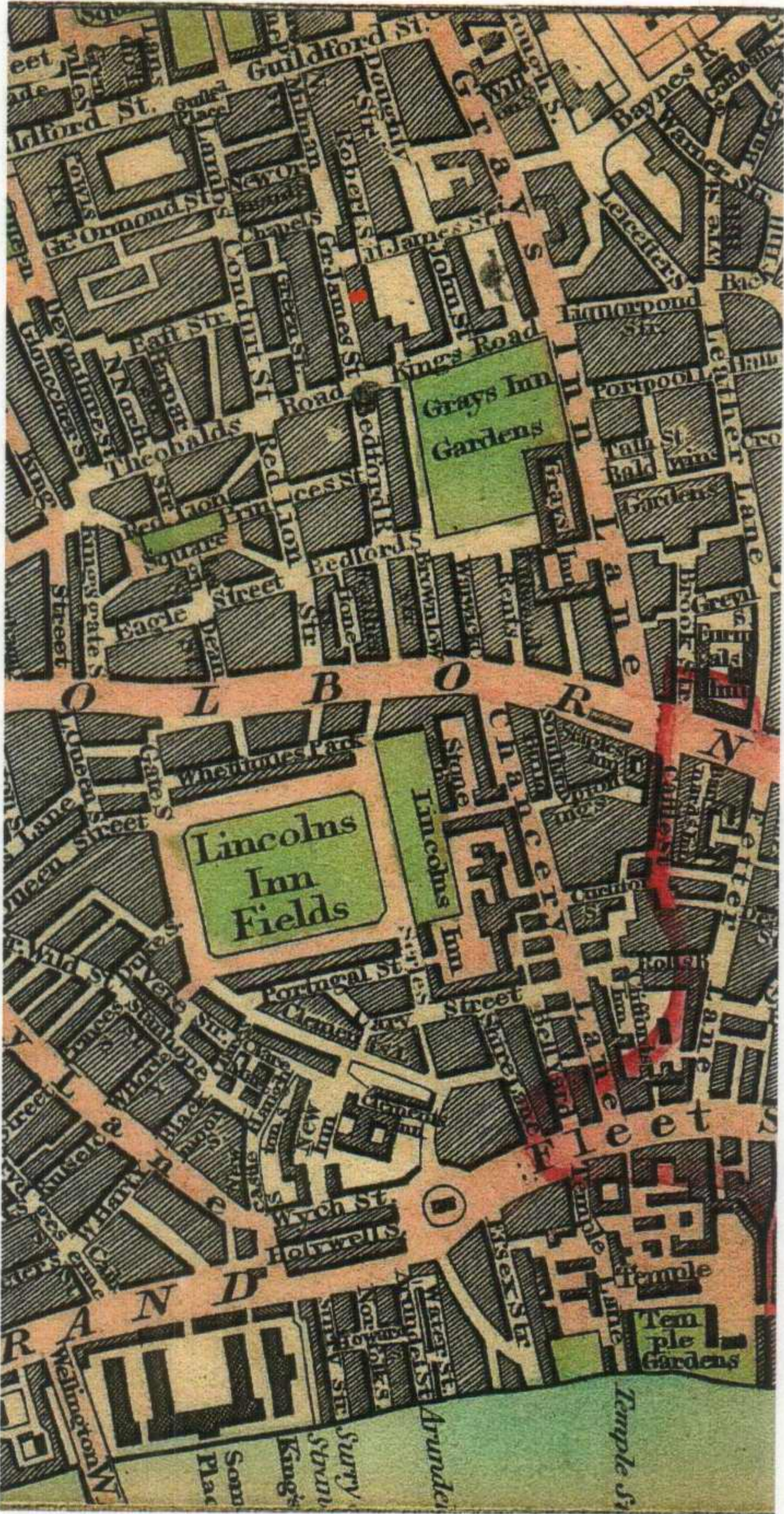


Figure C: 1834

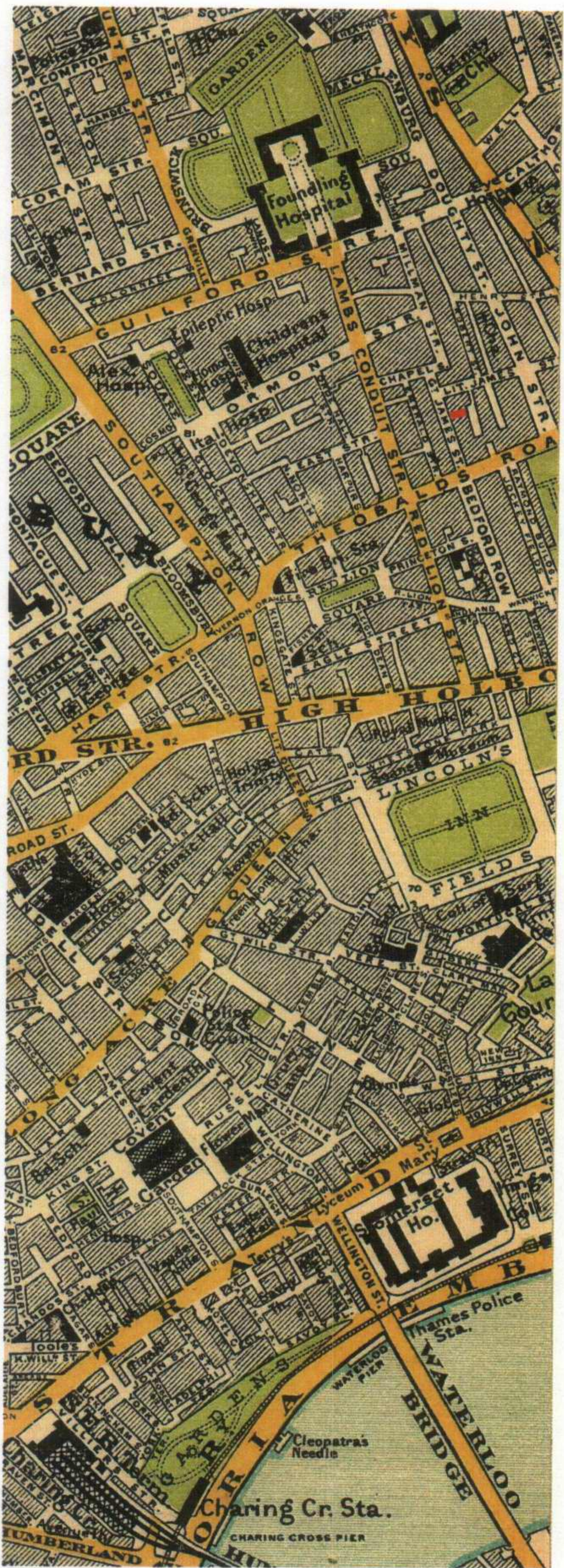


Figure D: 1897



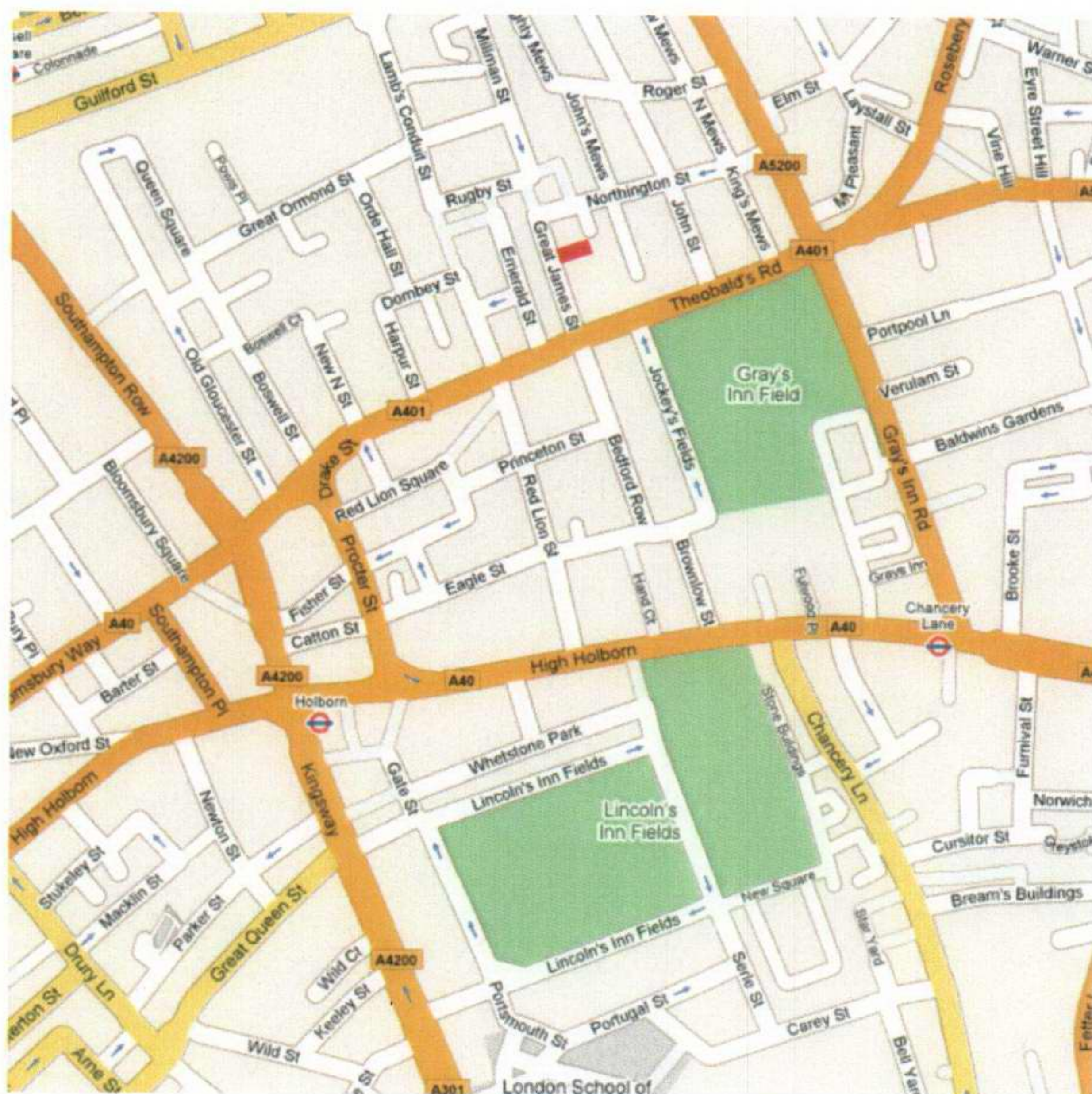


Figure E: Present day



Figure F: Present day



## **APPENDIX II PHOTOGRAPHS**





Figure 1  
External view of modern 2 storey extension to the rear of no. 11



Figure 2  
Existing modern extension to rear of no.12



Figure 3  
No 11, modern two storey extension, external junction with historic house. Original arched window to stair to be reinstated



Figure 4  
Rear party wall to No.11. Height to remain as existing.



Figure 5  
Rear Elevation to no.12. showing alterations to windows. Original window configuration to be reinstated.



Figure 6  
Third floor annexe probably re-built post war with added buttress.





Figure 7  
Panelling repairs to be carried out.



Figure 8  
Fireplace to F4. Party wall and panelling to be reinstated.

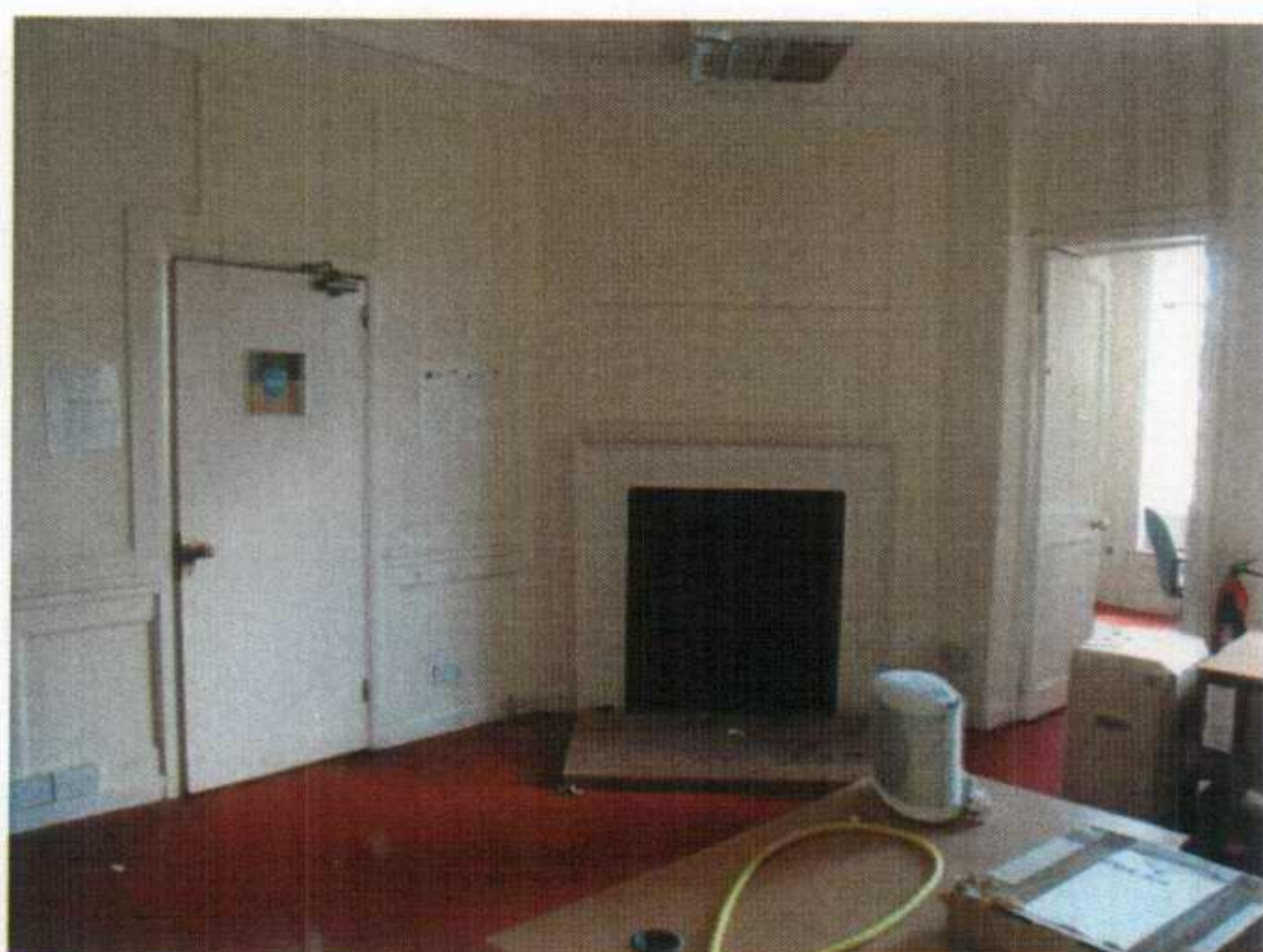


Figure 9  
Room S10. Party wall and panelling to be reinstated.



Figure 10  
Room F4, heating pipes to be re-routed within risers. Radiator casings to be removed.



Figure 11  
Window alterations to rear of no.12. Low level window to remain, new sash window to upper level. Render to be carefully removed



Figure 12  
Interior of Figure 11 showing upper level window and gib door below.



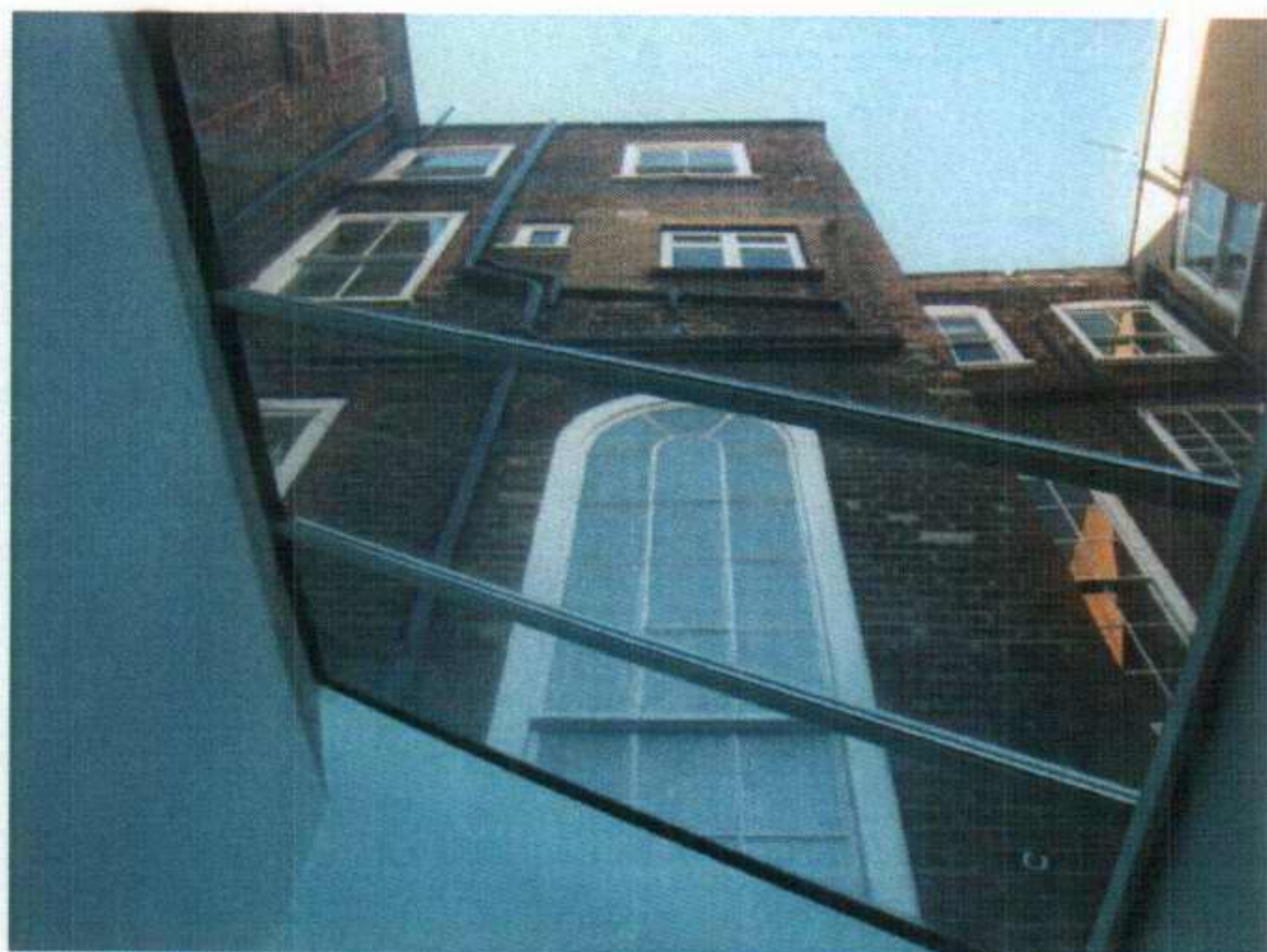


Figure 13  
Rear elevation to no.12 showing existing arched window to stair and window alterations above. Original window configuration to be reinstated.



Figure 14  
Remove glazed roof to existing lightwell to no.11



Figure 15  
S12, part of existing modern partition to remain to form bathroom. No panels below dado on doorway wall and doorway altered. Modern panelling to wall on RHS of photo



Figure 16  
Room T3 showing raised floor.



Figure 17  
Parapet repairs to be carried out.



Figure 18  
Previous refurbishment to roof of no. 12





Figure 19  
Room B22 Extensive ducts and pipes to be re-ordered and removed where possible.



Figure 20  
Room B3, pipework around existing range to be removed and range refurbished and exposed.



Figure 21  
Existing lightwell No 12



Figure 22  
Stripped panelling to G6. Column to be removed and new beam inserted. Panelling to be re-painted.



Figure 23  
View of existing two storey extension and existing lightwell to no. 11. Original bricked up window locations also visible.



Figure 24  
Existing arched window to stair of no. 12