



12 Great James Street - front elevation



11 Great James Street - front elevation

Rev P1: 26 Feb 08, planning application

MBA, 6th Floor, Tuition House  
27-37 St. George's Road  
Wimbledon, London SW19 4EU

Phone +44 (0) 20 8946 4141  
Fax +44 (0) 20 8946 2299  
Email mba@marcus-beale.co.uk

www.marcus-beale.co.uk

MARCUS  
BEALE  
ARCHITECTS

11-12 GREAT JAMES STREET  
**ELEVATIONS** HISTORIC  
SURVEY

Scale  
1:100 @ A3  
Date  
July 2007

423/030 P1



**HISTORIC SURVEY KEY:**

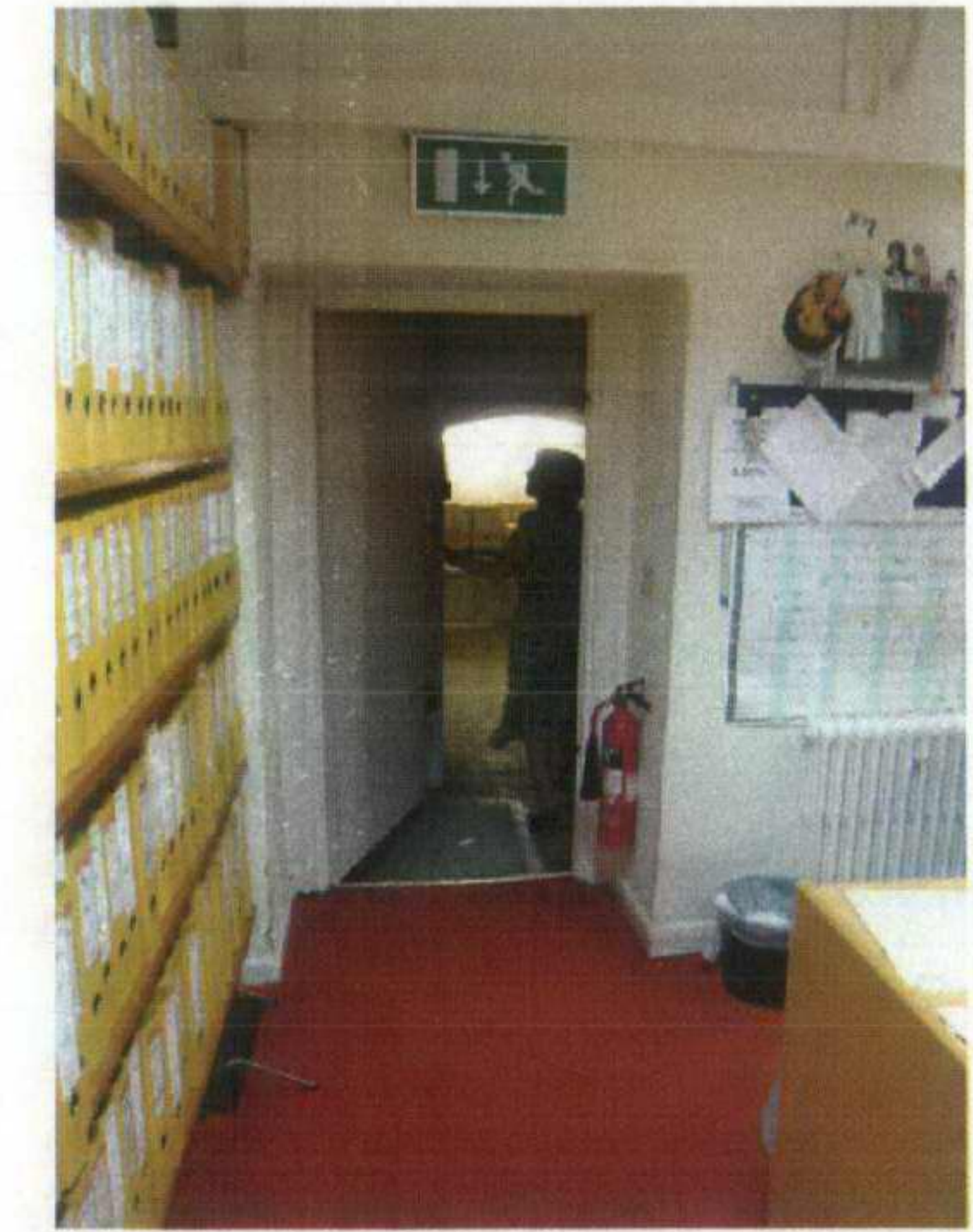
- Original fabric c.1724
- Alterations, undated
- Alterations c.1920
- Other modern alterations C20



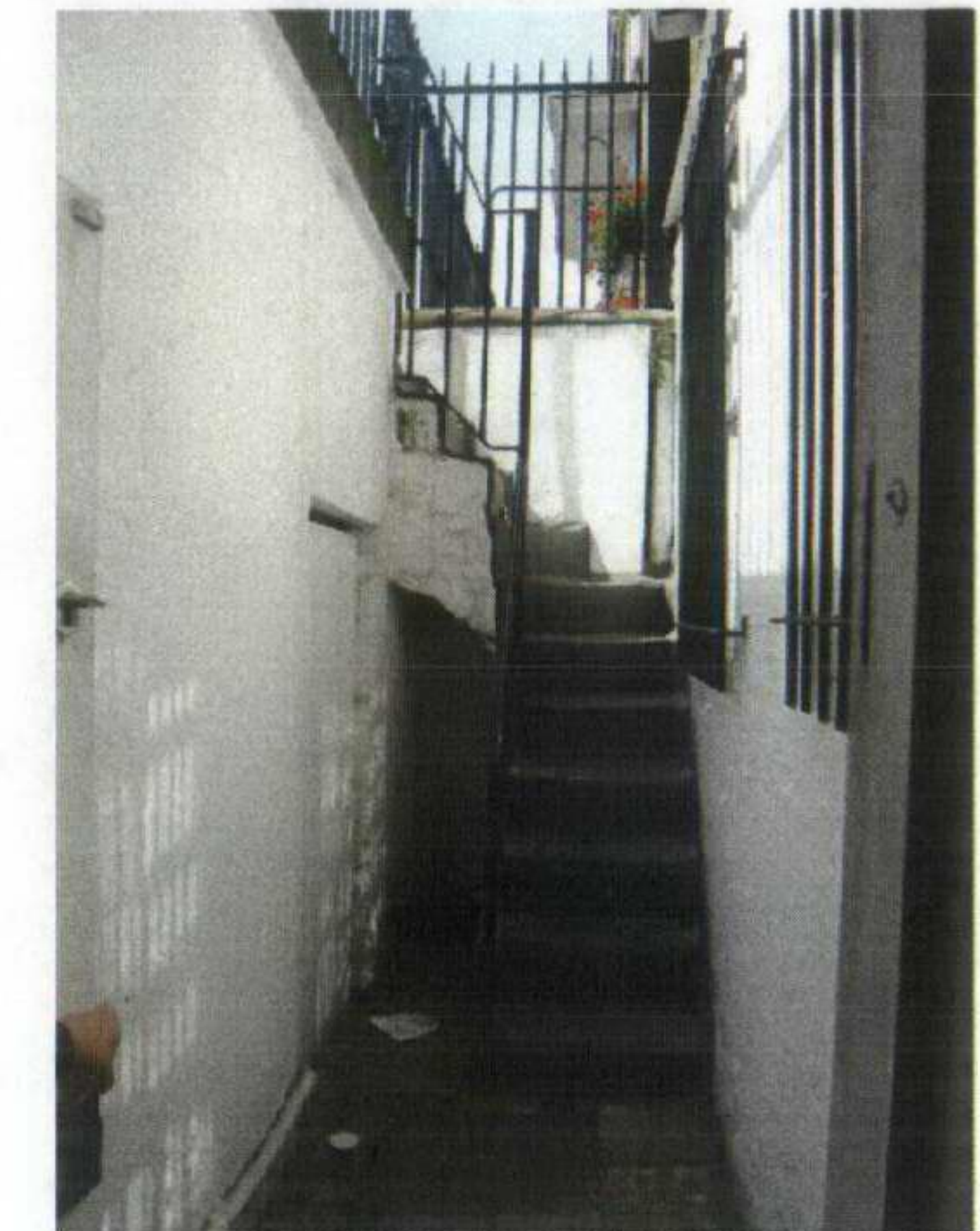
[no. 12] Altered stairs from basement



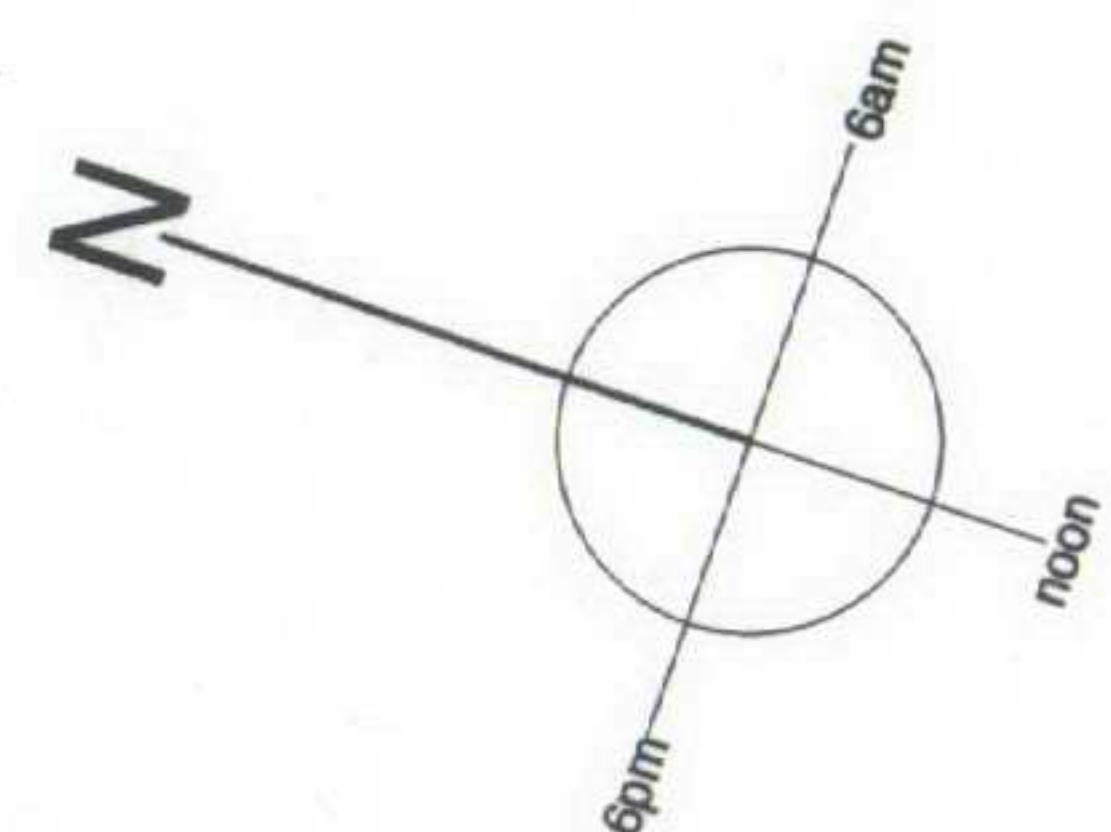
[no. 12] Original range behind services



[no. 11] Basement office with vaults under street beyond

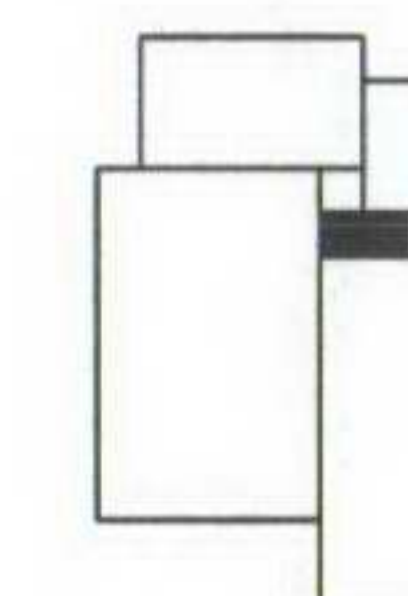


[no. 11] Original external stair from basement



0 5m 10m

MBA, 6th Floor, Tuition House  
27-37 St. George's Road  
Wimbledon, London SW19 4EU  
Phone +44 (0) 20 8946 4141  
Fax +44 (0) 20 8946 2299  
Email mba@marcus-beale.co.uk  
www.marcus-beale.co.uk



MARCUS  
BEALE  
ARCHITECTS

Rev P1: 26 Feb 08, planning application

11-12 GREAT JAMES STREET		HISTORIC SURVEY
<b>BASEMENT PLAN</b>		
Scale 1:100 @ A3	423/031 P1	
Date July 2007		





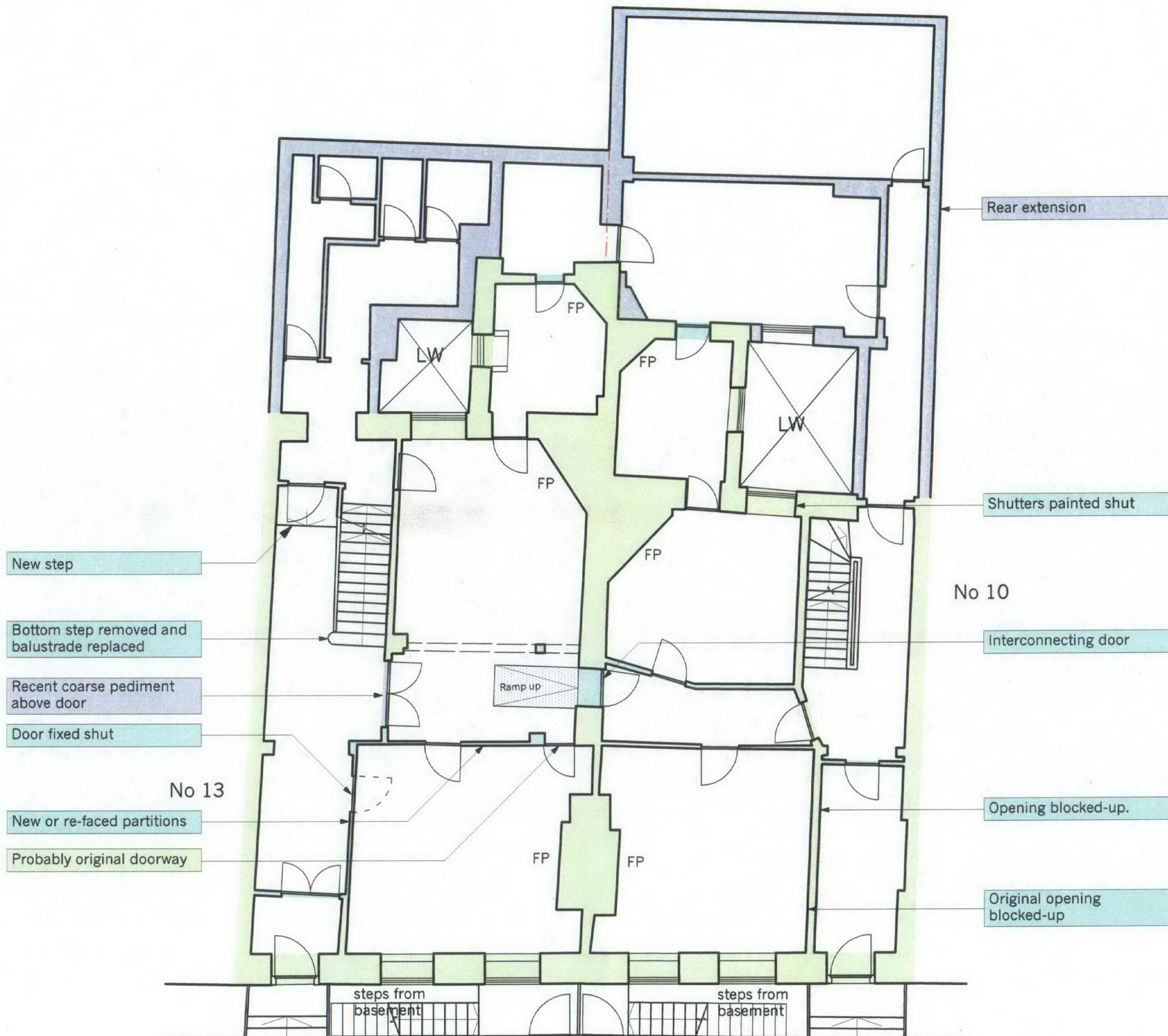
[no. 12] Recent coarse pediment



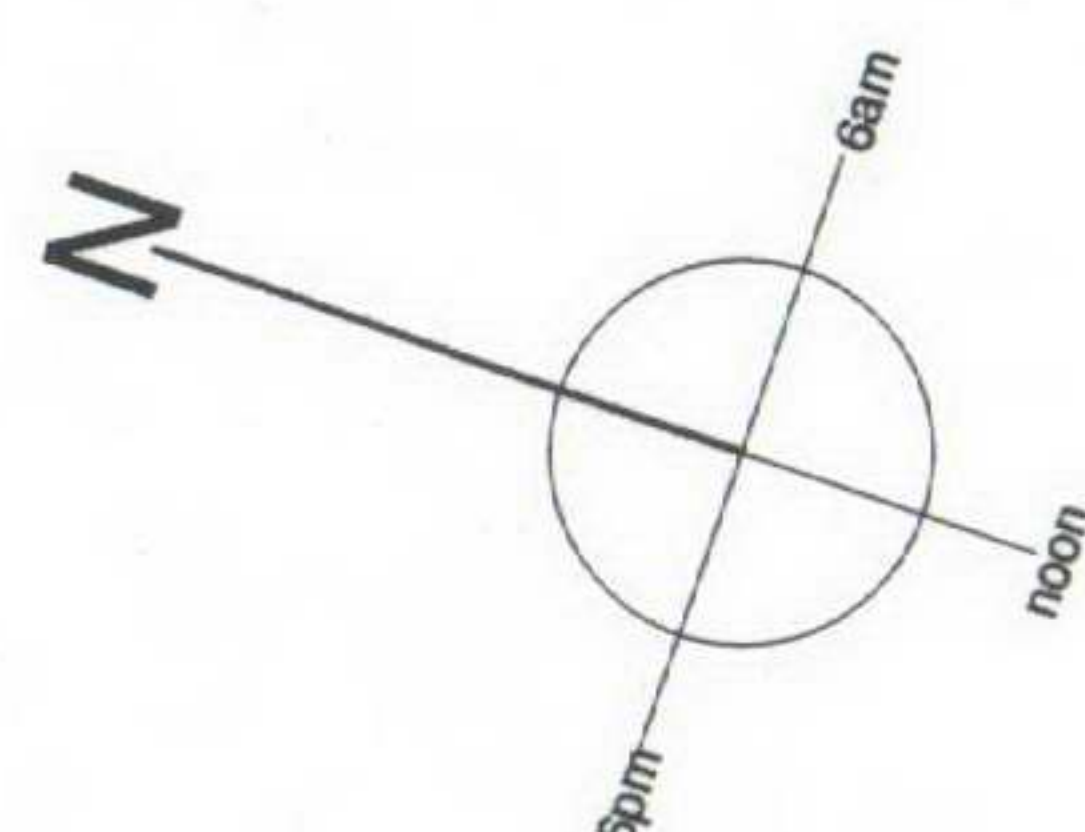
[no. 12] Entrance hall with recent double door

# HISTORIC SURVEY KEY:

- Original fabric c.1724
- Alterations, undated
- Alterations c.1920
- Other modern alterations C20



[no. 11] Shutters painted shut



0 5m 10m

MBA, 6th Floor, Tuition House  
27-37 St. George's Road  
Wimbledon, London SW19 4EU

Phone +44 (0) 20 8946 4141  
Fax +44 (0) 20 8946 2299  
Email mba@marcus-beale.co.uk

www.marcus-beale.co.uk

MARCUS  
BEALE  
ARCHITECTS

Rev P1: 26 Feb 08, planning application

11-12 GREAT JAMES STREET  
**GROUND FLOOR** HISTORIC  
SURVEY

Scale  
1:100 @ A3  
Date  
July 2007

423/032 P1

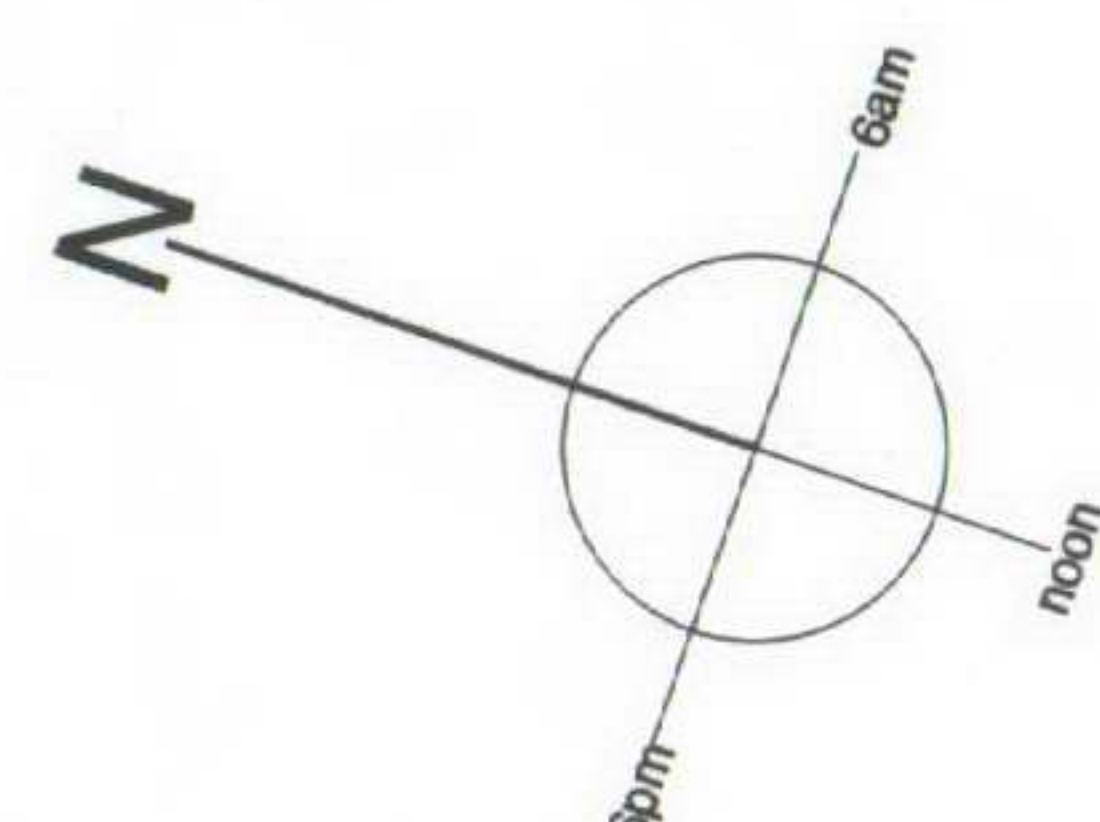




[no. 12] Original arched opening leading to 1920-30s stairs



[no. 12] New partition to left of image - later cornice, not panelled



Shutters painted shut

Georgian grate fireplace

Lower panels oak, painted upper panels stripped

New stairs c. 1920-30s. Possible new location / configuration

No 13

New partition with later cornice

Original fire surround, grate removed

FP

FP

LW

FP

FP

FP

FP

Rear extension

Cornice and panelling removed

Original arched window blocked-up

No 10

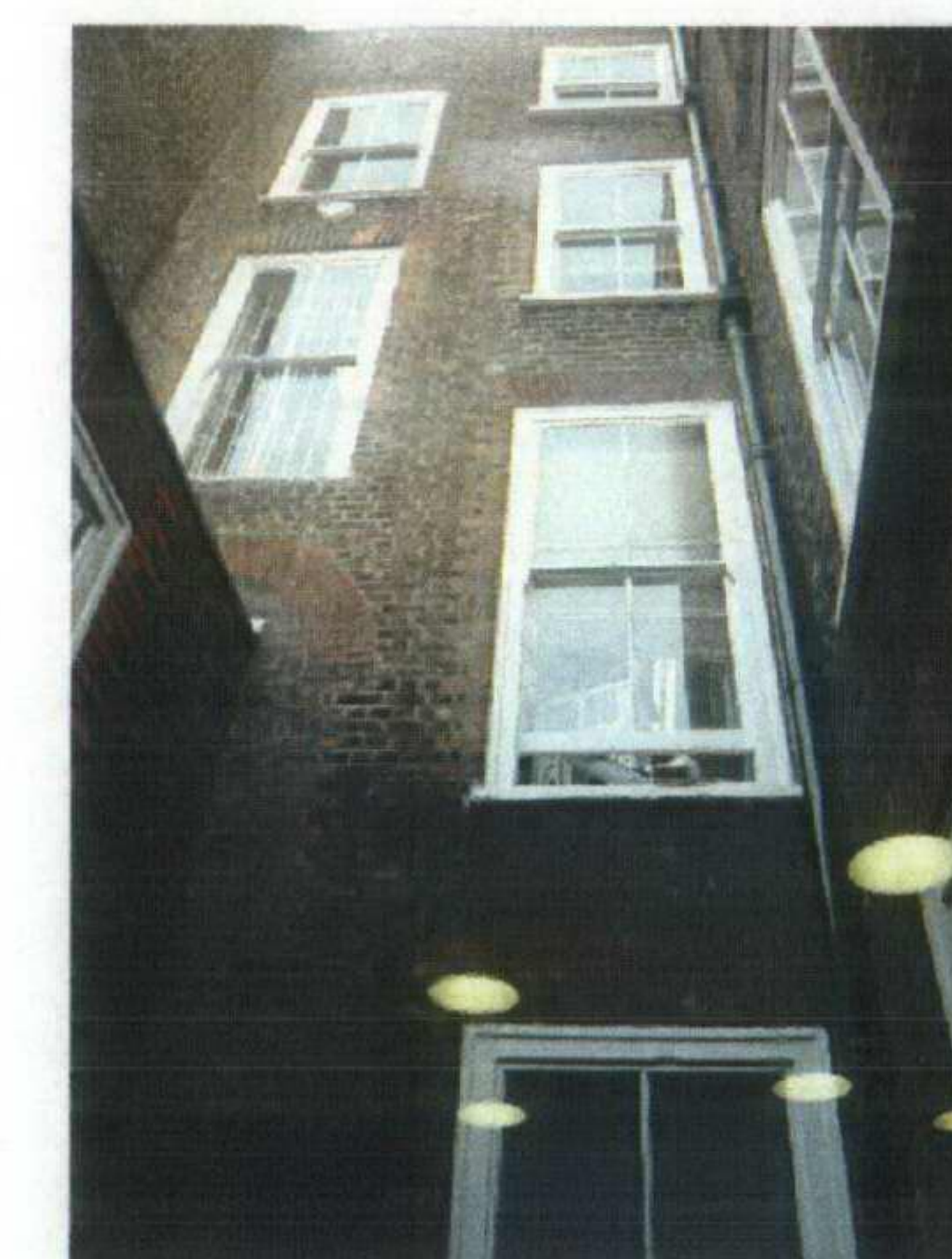
Later panelling

Interconnecting doors

Later opening

# HISTORIC SURVEY KEY:

- Original fabric c.1724
- Alterations, undated
- Alterations c.1920
- Other modern alterations C20



[no. 11] Arched window of stairwell blocked-up



[no. 11] Original internal stair and panelling painted

MBA, 6th Floor, Tuition House  
27-37 St. George's Road  
Wimbledon, London SW19 4EU

Phone +44 (0) 20 8946 4141  
Fax +44 (0) 20 8946 2299  
Email mba@marcus-beale.co.uk

www.marcus-beale.co.uk

MARCUS  
BEALE  
ARCHITECTS

Rev P1: 26 Feb 08, planning application

11-12 GREAT JAMES STREET  
**FIRST FLOOR** HISTORIC  
SURVEY

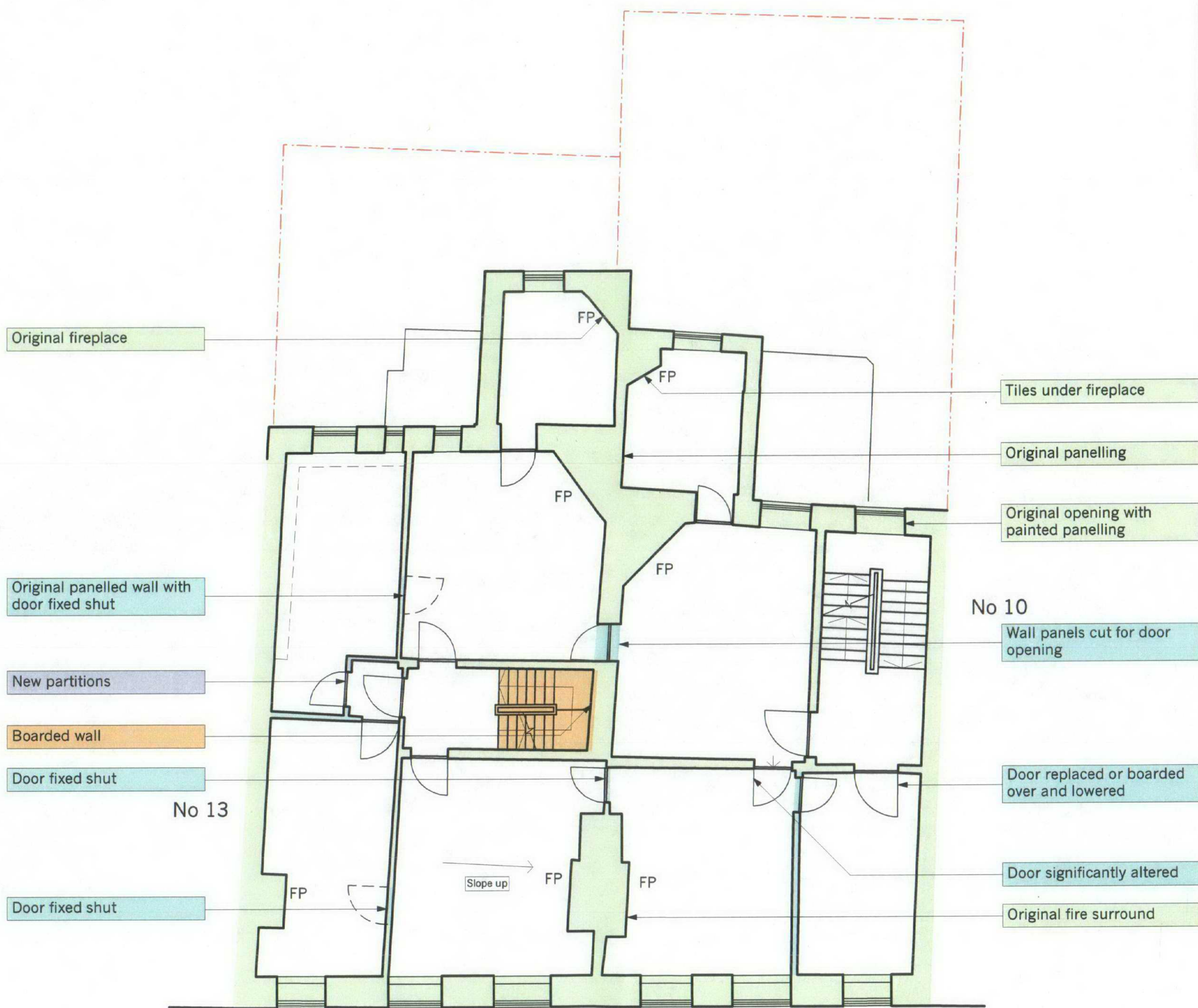
Scale  
1:100 @ A3  
Date  
July 2007

423/033 P1



**HISTORIC SURVEY KEY:**

- Original fabric c.1724
- Alterations, undated
- Alterations c.1920
- Other modern alterations C20



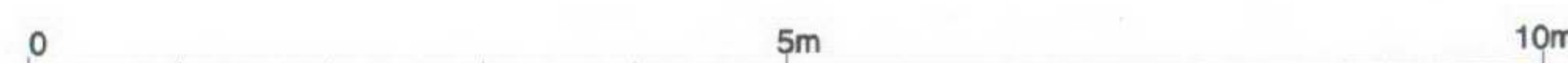
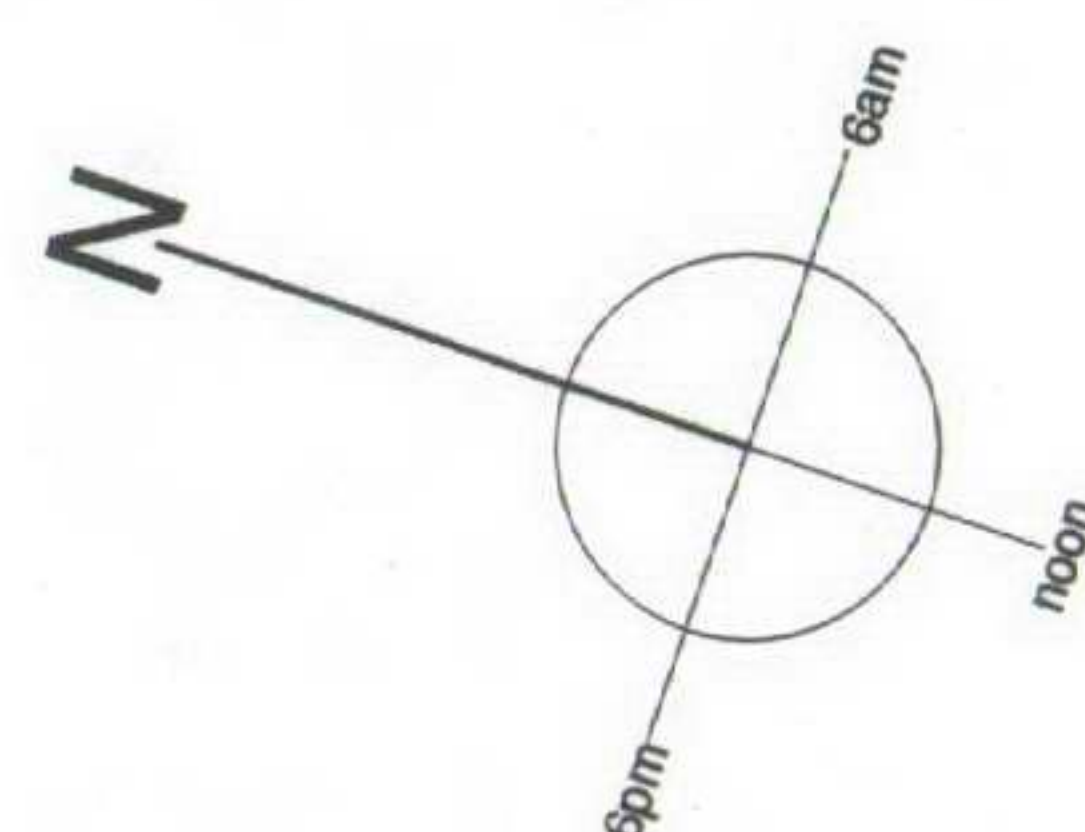
[no. 12] 1920-30s stairs with boarded wall



[no. 11] Original stairs and window, panelling painted



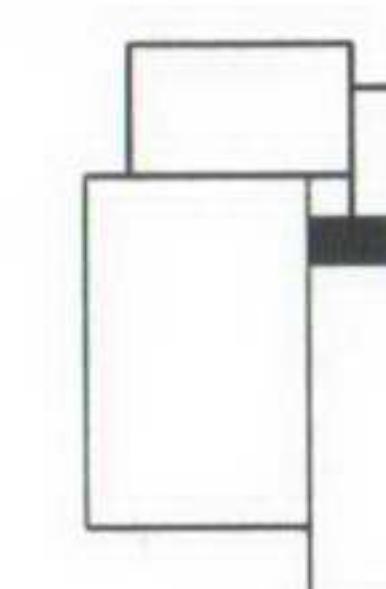
[no. 11] Door opening lowered, services boxed-in



MBA, 6th Floor, Tuition House  
27-37 St. George's Road  
Wimbledon, London SW19 4EU

Phone +44 (0) 20 8946 4141  
Fax +44 (0) 20 8946 2299  
Email mba@marcus-beale.co.uk

www.marcus-beale.co.uk



MARCUS  
BEALE  
ARCHITECTS

Rev P1: 26 Feb 08, planning application

11-12 GREAT JAMES STREET  
**SECOND FLOOR** HISTORIC SURVEY

Scale  
1:100 @ A3  
Date  
July 2007

423/034 P1

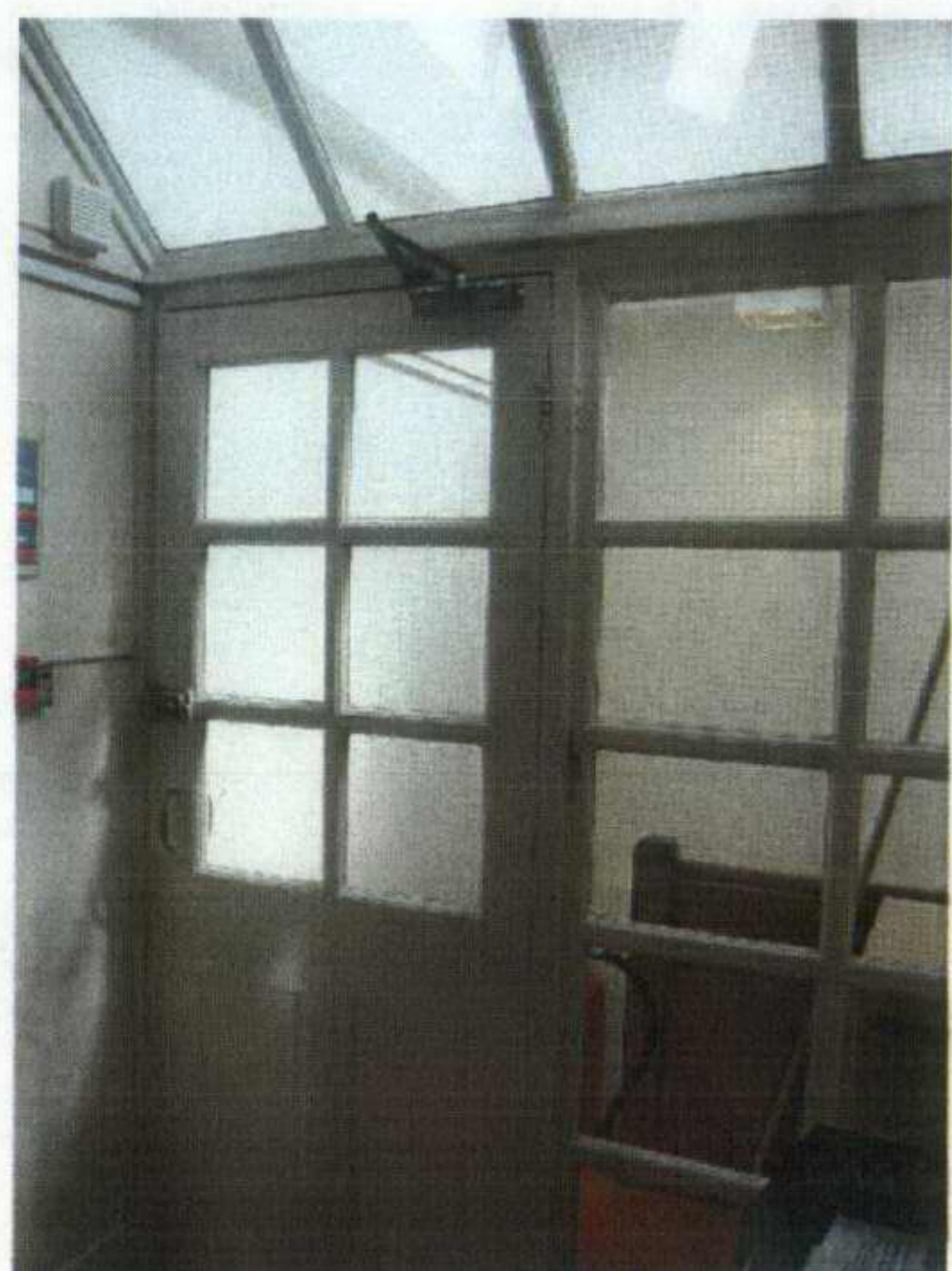


**HISTORIC SURVEY KEY:**

- Original fabric c.1724
- Alterations, undated
- Alterations c.1920
- Other modern alterations C20



[no. 12] Door interconnecting no.11 and no.12 Gt James St.



[no. 12] 1920-30s partitions at top of stairs



[no. 11] Original fireplace



[no. 11] Amended floor levels

Modern casing - 1m high

Glazed firescreen

Small step

No 13

Flue

Levelled floor

FP

FP

FP

Levelled floor

No 10

Interconnecting door

Glazed fire screen

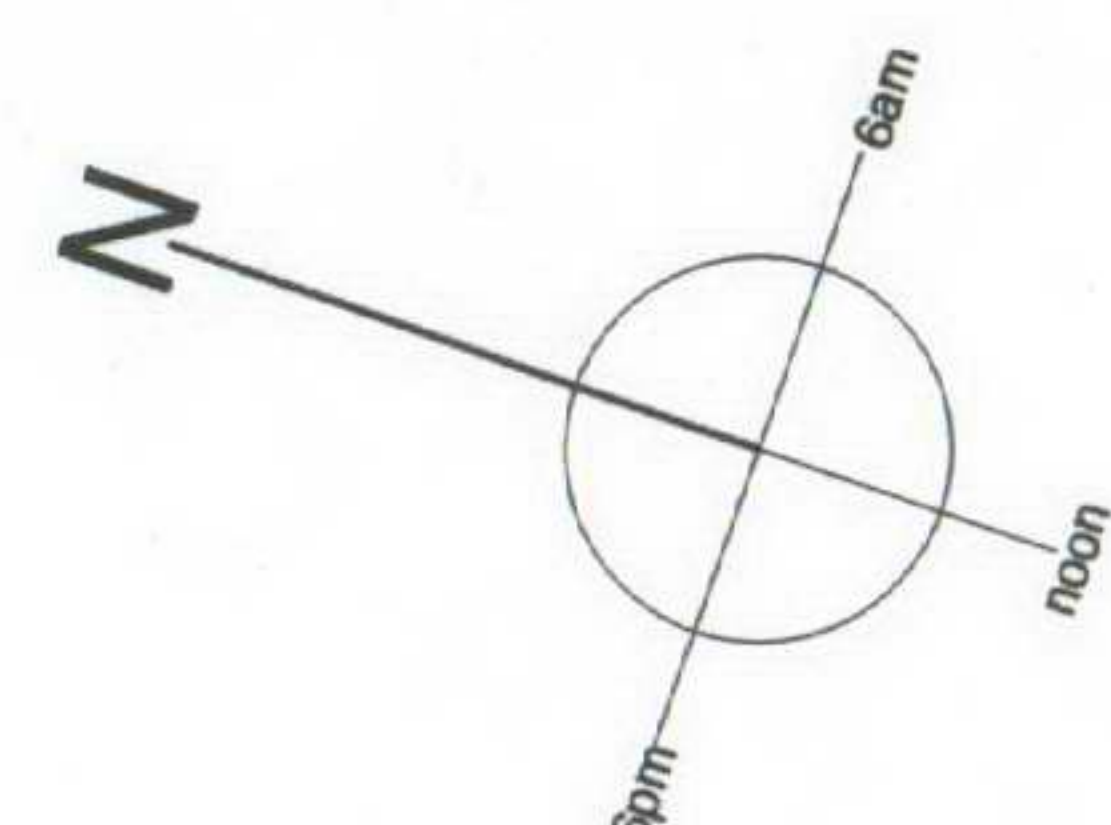
FP

FP

Levelled floor

Levelled floor

Levelled floor



0 5m 10m

MBA, 6th Floor, Tuition House  
27-37 St. George's Road  
Wimbledon, London SW19 4EU

Phone +44 (0) 20 8946 4141  
Fax +44 (0) 20 8946 2299  
Email mba@marcus-beale.co.uk

www.marcus-beale.co.uk

MARCUS  
BEALE  
ARCHITECTS

Rev P1: 26 Feb 08, planning application

11-12 GREAT JAMES STREET  
**THIRD FLOOR** HISTORIC  
SURVEY

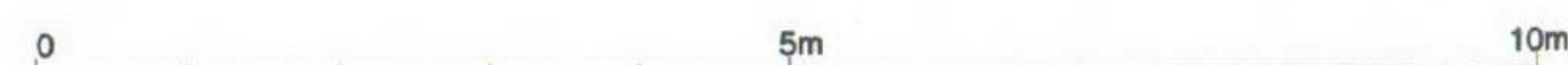
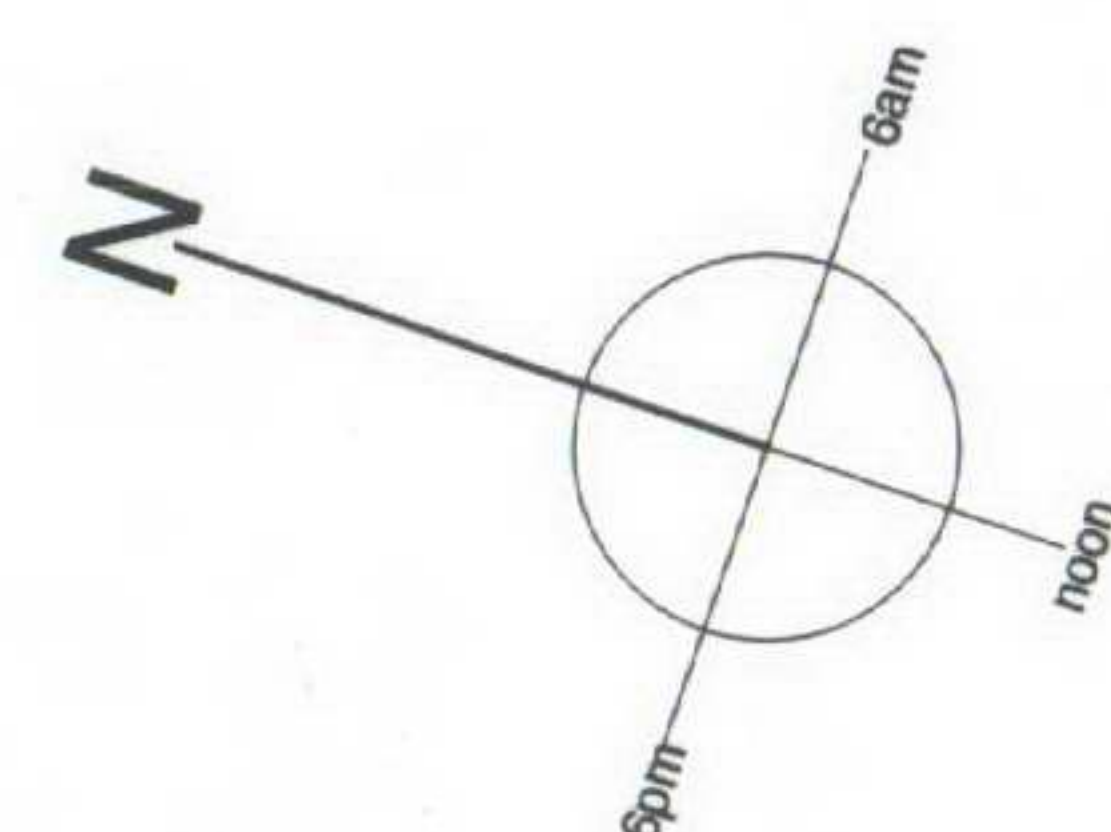
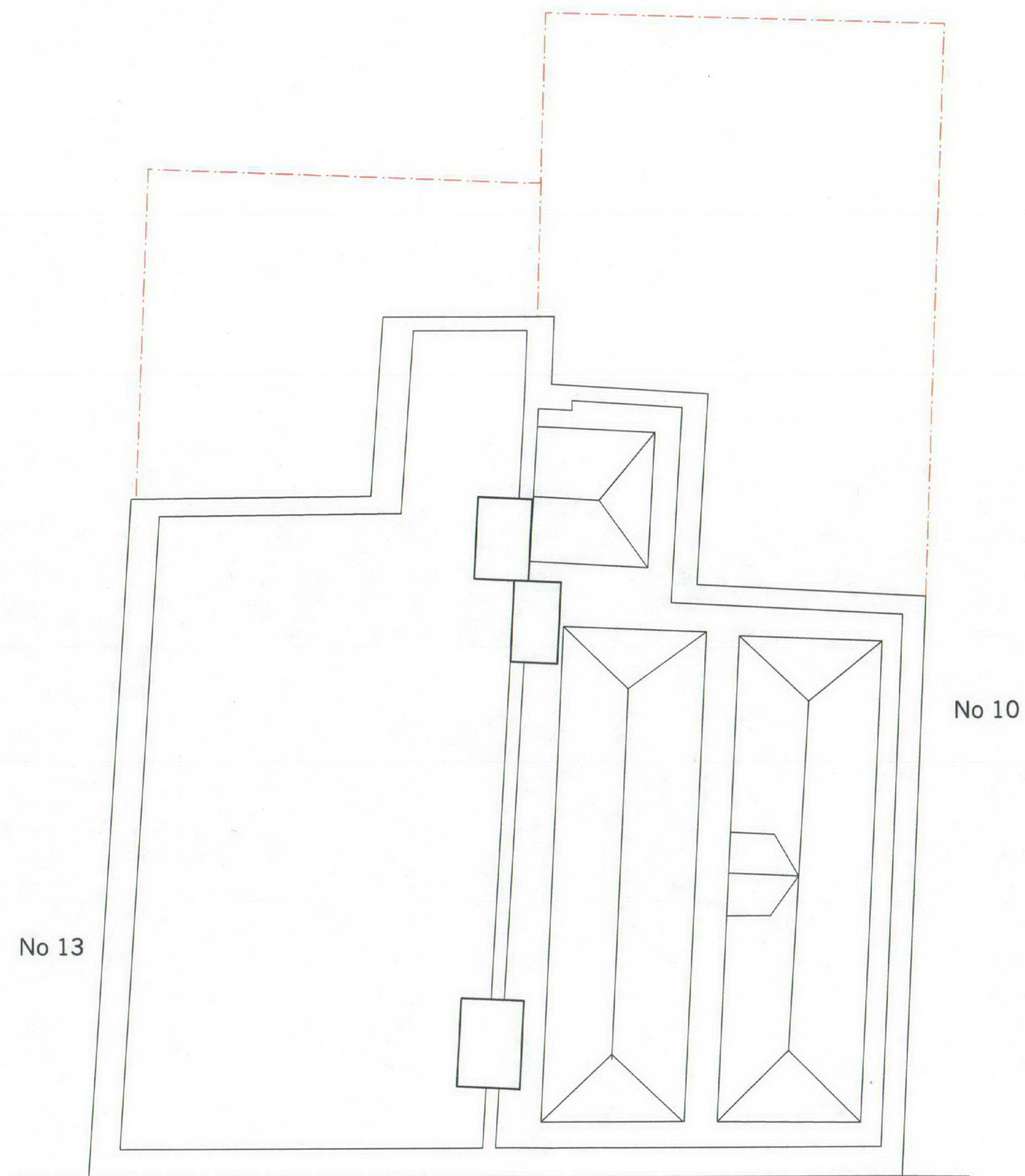
Scale  
1:100 @ A3  
Date  
July 2007

423/035 P1

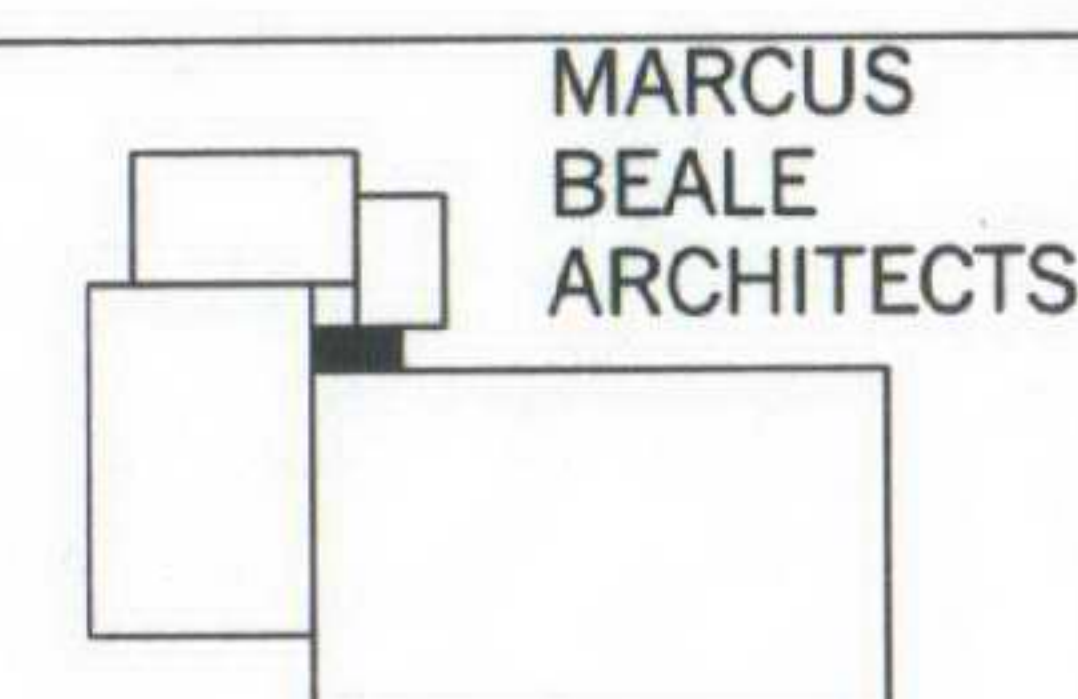


**HISTORIC SURVEY KEY:**

- Original fabric c.1724
- Alterations, undated
- Alterations c.1920
- Other modern alterations C20



MBA, 6th Floor, Tuition House  
 27-37 St. George's Road  
 Wimbledon, London SW19 4EU  
 Phone +44 (0) 20 8946 4141  
 Fax +44 (0) 20 8946 2299  
 Email mba@marcus-beale.co.uk  
 www.marcus-beale.co.uk



Rev P1: 26 Feb 08, planning application

11-12 GREAT JAMES STREET		HISTORIC SURVEY
<b>ROOF PLAN</b>		
Scale 1:100 @ A3	423/036 P1	
Date July 2007		