

**CAMDEN PROPERTY SERVICES / CHILDREN SCHOOLS & FAMILIES**  
**20-22 Kingsgate Place**

**Photographs for Planning Application**

**Issue A**  
**15<sup>th</sup> December 2007**



1. Front/End Elevation



2. Rear Elevation



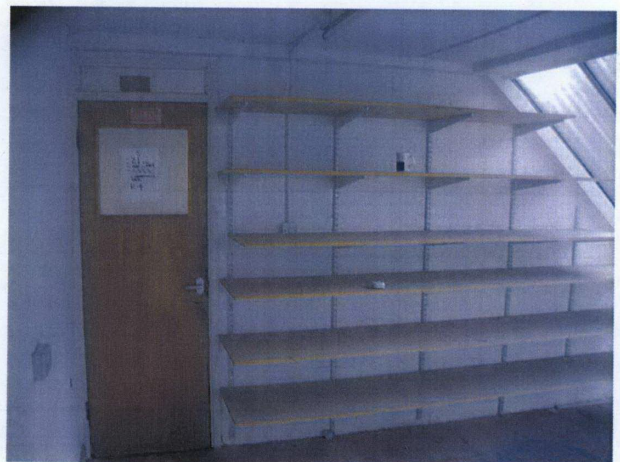
3. Front Elevation



4. Typical Ground Floor Interior (No 20)



5. Staircase (No 22)



6. First Floor (No 22)