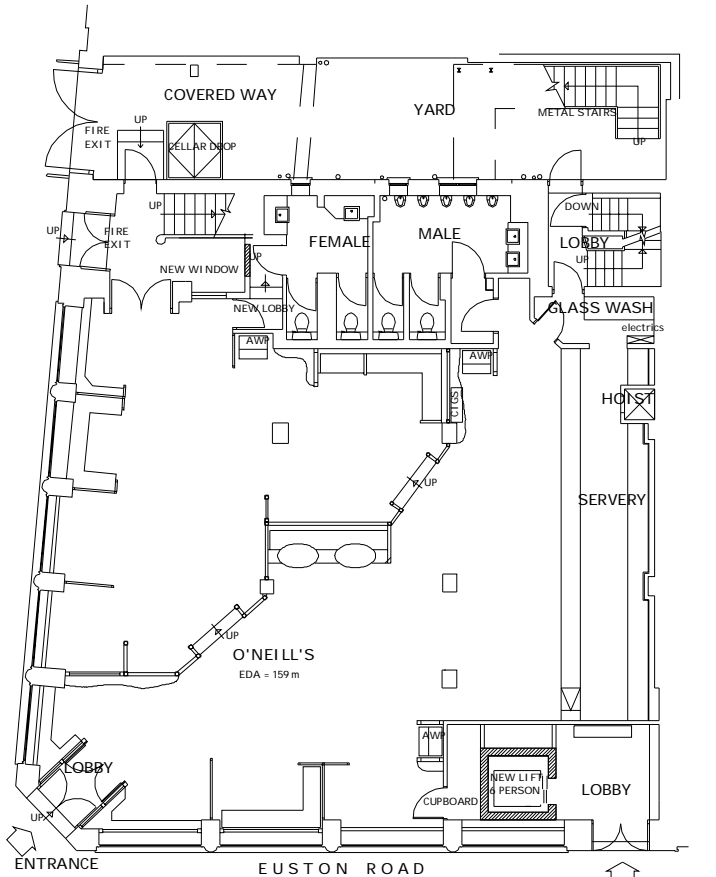
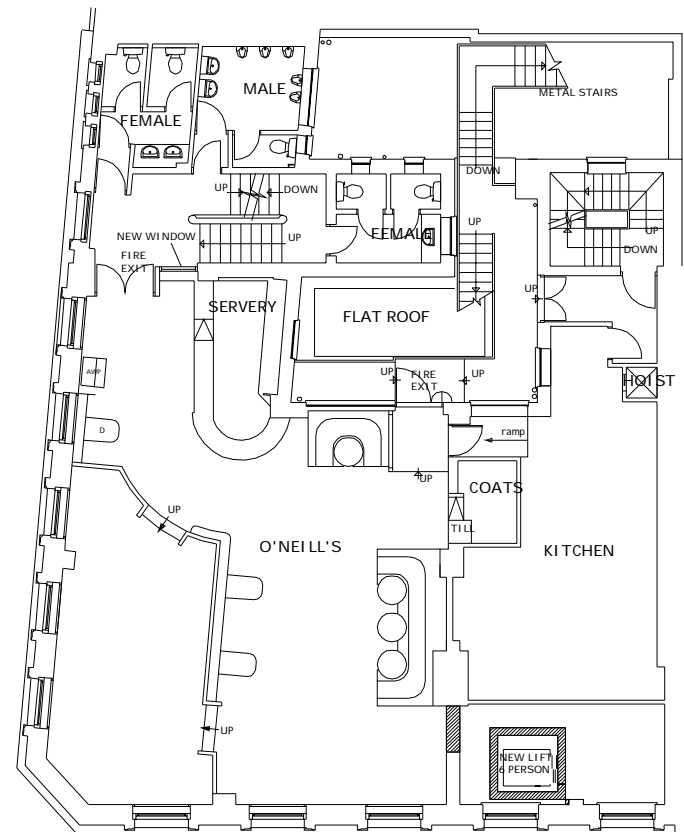


BASEMENT PLAN

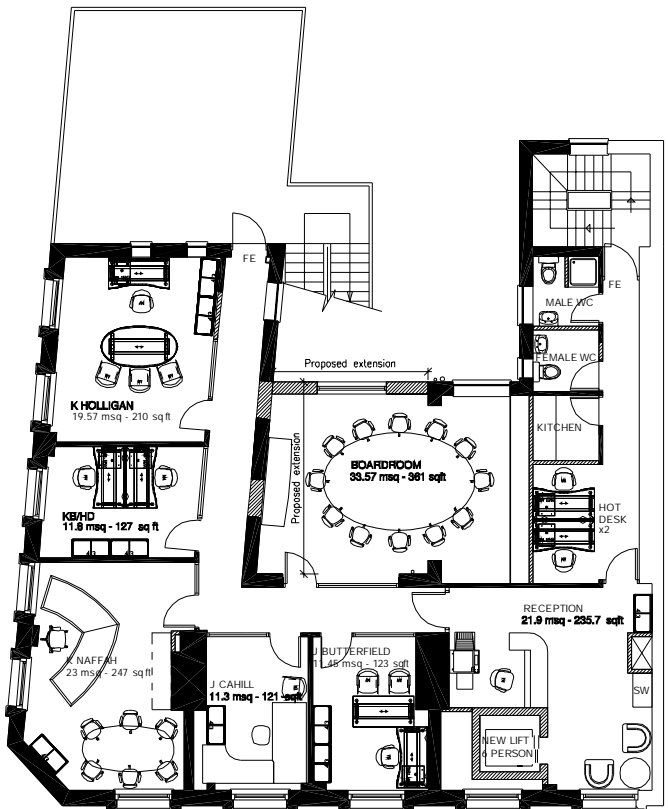
Key
New walls



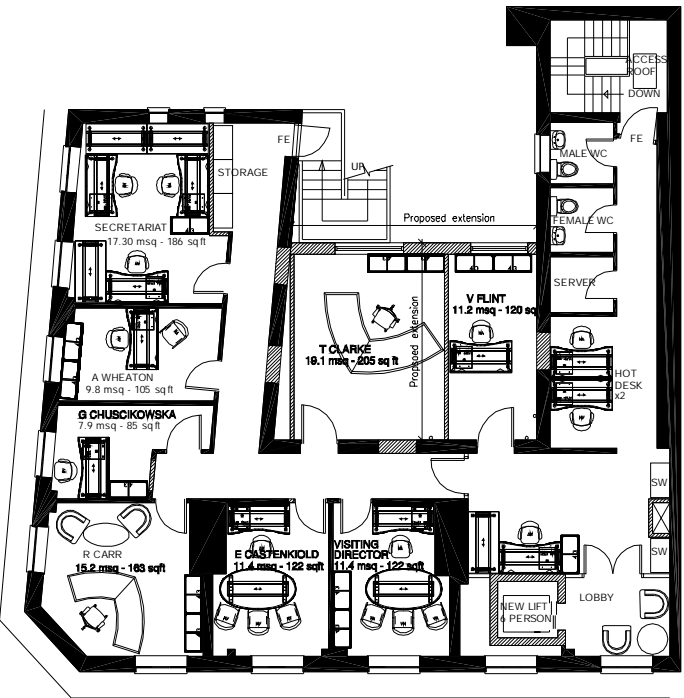
GROUND FLOOR PLAN



FIRST FLOOR PLAN



PROPOSED SECOND FLOOR PLAN



PROPOSED THIRD FLOOR PLAN

Scale - Metres
0 1 2 3 4 5

The Contractor is to check and verify all building and site dimensions, levels and sewer invert levels at connection points before work starts.

This drawing must be read with and checked against any structural or other specialist drawings provided.

The Contractor is to comply in all respects with the current Building Regulations whether or not specifically stated on these drawings.

This drawing is not intended to show details of foundation or ground conditions. Each area of ground relied upon to support the structure depicted must be investigated by the Contractor and suitable methods of foundation be provided.

This drawing is to be read in conjunction with all other standard Mitchells & Butlers specifications and documentation.

(C) This drawing remains the Copyright of Mitchells & Butlers Retail Limited.

Rev.	Description	By	Date
A	RECEPTION OMITTED TO 3rd FLOOR	AB	10.01.08
	FURNITURE AMENDED TO JT, KH& EC OFFICES		
	GLAZED SCREENS ADDED TO CORRIDOR WALLS		
	VISITING DIRECTOR'S OFFICE ADDED TO 3rd FLOOR		
	SERVER ROOM RELOCATED TO BASEMENT		
B	KN,TC,RC and P.A. offices relocated.		
	Wall relocated to KN office. Boardroom relocated to 2nd floor. Hot desks and kitchen amended to 2nd floor.		
	Reception and kitchen to 3rd floor omitted. Hot desks added to 3rd floor.		
	Extg internal and external fire doors added to GF bar rear exit	LD	16.1.08
C	RC,KH,GC,AW and Secretariat offices relocated. Existing walls reinstated to RC & GC offices. Visiting Director office indicated.KB/HD office indicated	LD	18.1.08
D	2nd floor Male and Female relocated, shower added to male toilet. Office relocated and chauffeur/staff room added to basement. Store omitted to 1st floor. Reception area amended	LD	21.1.08

THE OLD WILL CASTLE STREET
DUNGAREE STREET CHURCH
TELEPHONE (01277) 368000
FACSIMILE (01277) 388012
EMAIL NAME@DESIGNCOALITION.DUNOM.CO.UK

DESIGN
COALITION

Mitchells & Butlers Retail Limited
27 Fleet Street
Birmingham
B3 1JP
0870 609 3000

Mitchells
& Butlers

Brand

BUN

Site: 73-77 Euston Road
London
NW1 2QS

Title: Proposed Floor Plans

Project Manager Checked	Drawn By AB	Scale (A1 Plot) 1:100	Date Jan 0
Arch./Des. Drawing Number	2657/102	Rev. D	