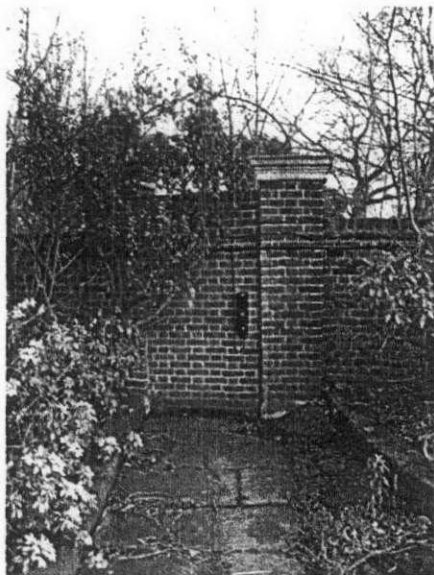


## 1017/GW 05 - Works to perimeter wall.



### 1. Former pedestrian entrance gate between front forecourt and Spaniards Road.

Carefully remove wrought iron lantern bracket and to pier cap to southern gate post. Re-build top 5 courses of southern gate post and re-seat pier cap. Restore and re-paint wrought iron lantern bracket.



### 2. Eastern Front Gates and posts

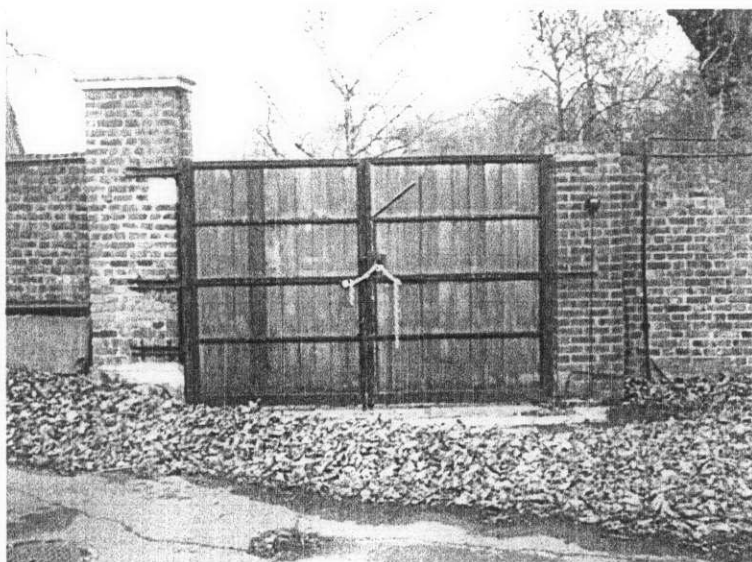
Remove unsightly automation boxes and wiring from internal face of gate post. Repair and re-point gate posts. Entryphone buzzer replaced.



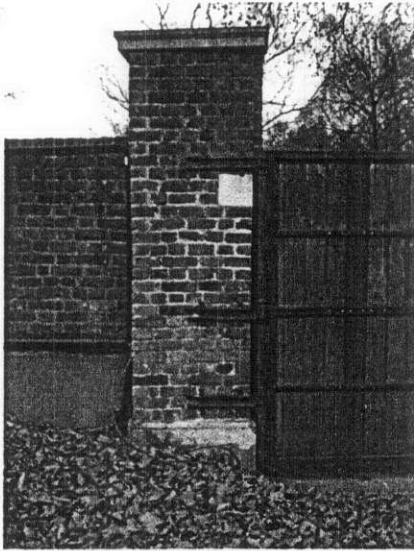
### 3. Western Front Gates and posts

Remove unsightly automation boxes and cabling from gateposts, together with unsightly mail box. Mounted on entrance gate. Entryphone buzzer replaced.

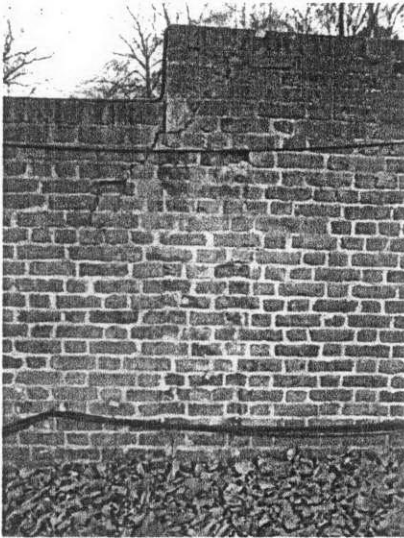
4. Re-point highlighted lengths of wall where pointing has been damaged by vehicle spray. Existing mortar joints should be raked back carefully to a firm base before re-pointing in lime mortar. Exact mix to be clarified to match existing aggregate and colour.



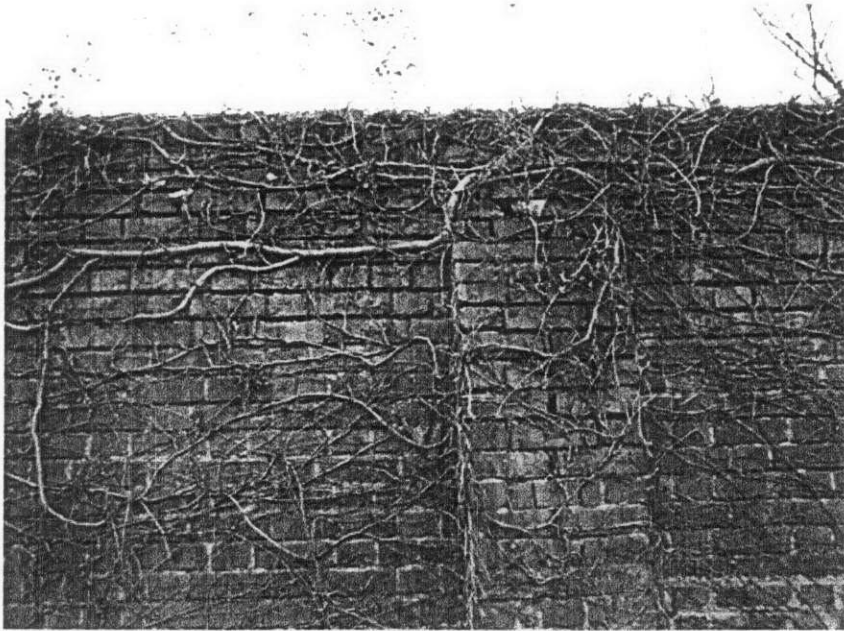
5. New gate pillar to match existing. re-built as per detail, (see 1017/GW 04) with new stone ball, sockle and pier cap in stone to match existing.



6. New gate pillar to match existing re-built as per detail, with new stone ball and sockle on pier cap.



7. A repair to internal face of wall cracking and damaged brick work caused by historic removal of former garden wall.

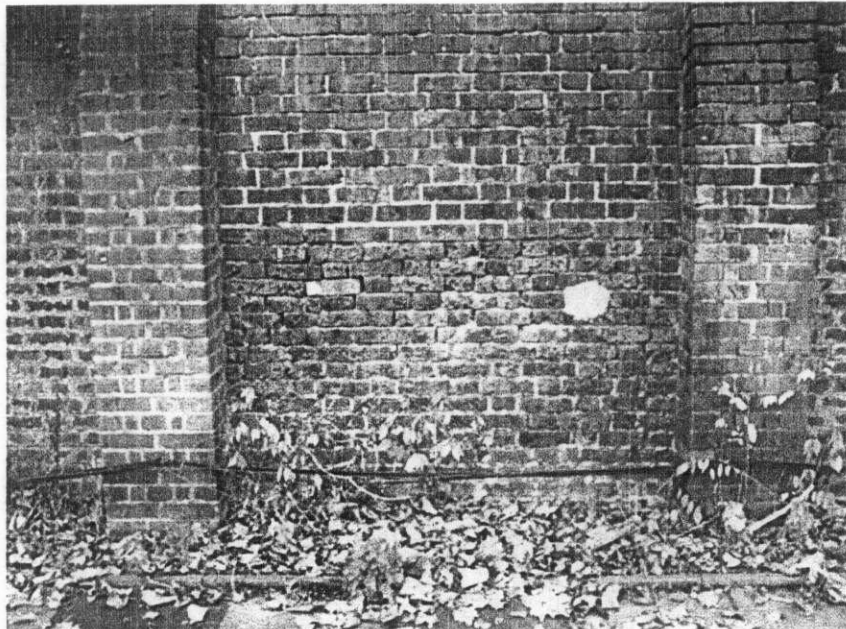


8. Remove ivy and other foliage at high level along highlighted length of internal wall face and re-point at high level, as required.



9. Replace missing brick and repoint with lime mortar.

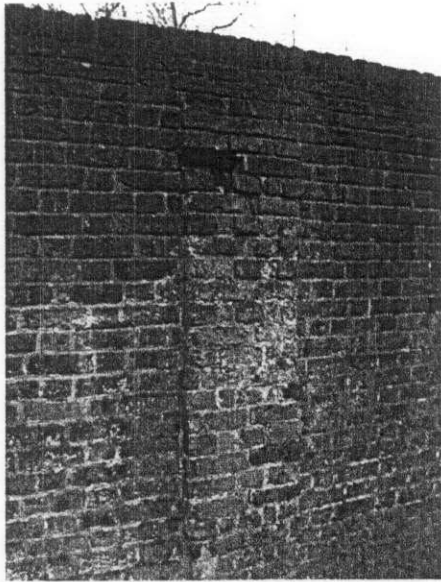




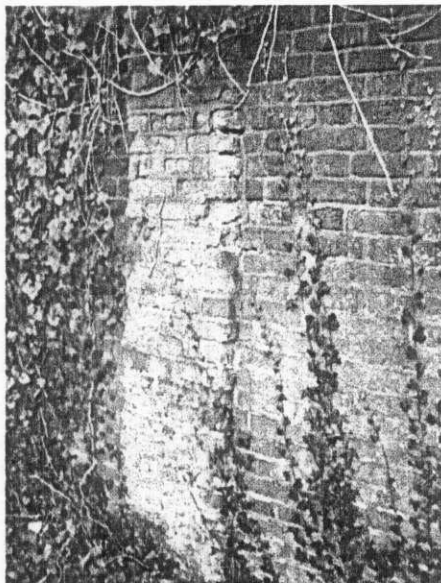
10. Re-point at low level between piers with lime mortar. Replace missing brick



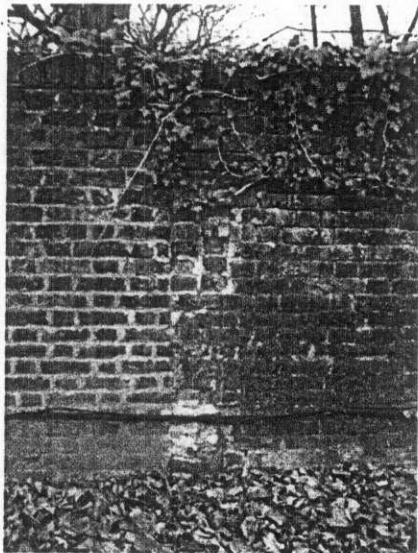
11. Repair existing pier, piece in missing brickwork and repoint.



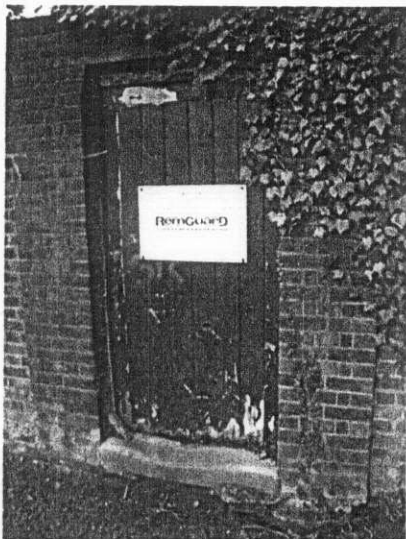
12. Repair existing pier, piece in missing brickwork and repoint as necessary, particularly badly damaged red rubbed pier quoins.



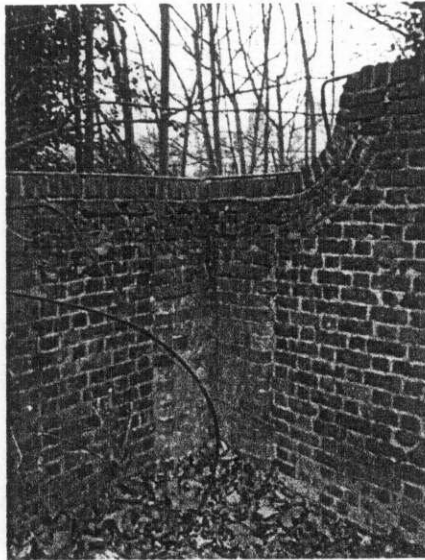
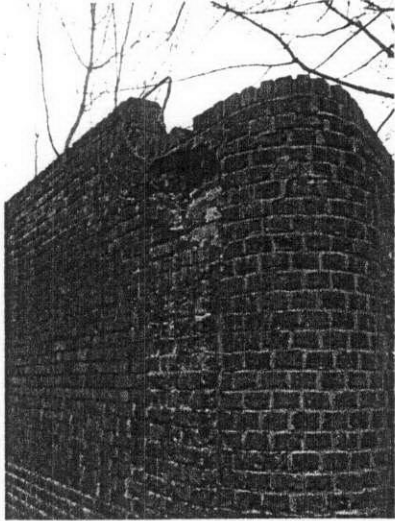
13. Carefully remove cementitious mortar, remove damaged brickwork and replace as necessary, particularly badly damaged red rubbed pier quoins..



14. Remove ivy and other foliage at high level and re-point in this length. Repair area of damage where adjoining wall has been historically removed.



15. Repair and re-paint existing gate in the external face. Colour to be confirmed.

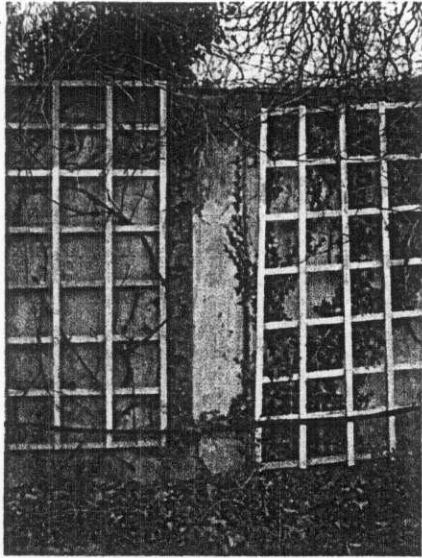


16. Re-build lost brickwork at high level on external corner, re-point at high level to internal face.



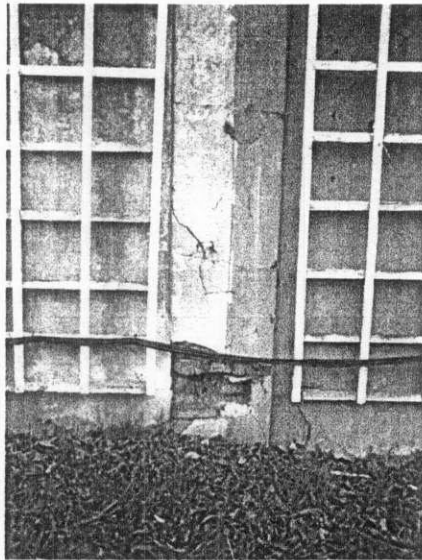
17. Remove trellis and foliage. Make good where brickwork is missing at edge of glasshouses historically removed. Piece in brickwork behind and make good render.





18. Remove trellis and make good where brickwork has been left exposed at edge of glasshouses historically removed.

Piece in brickwork behind and make good render.

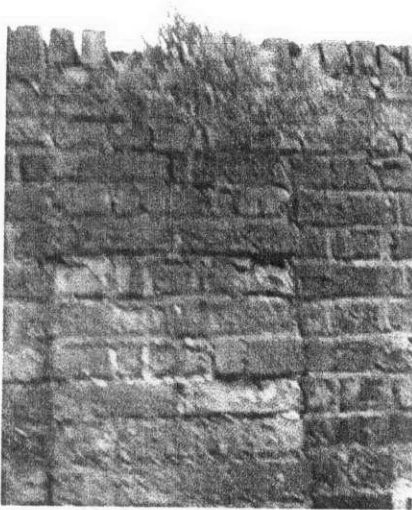


19. Remove trellis Make good where brickwork and render has been damaged at low level glasshouses. Piece in

brickwork behind and make good render.



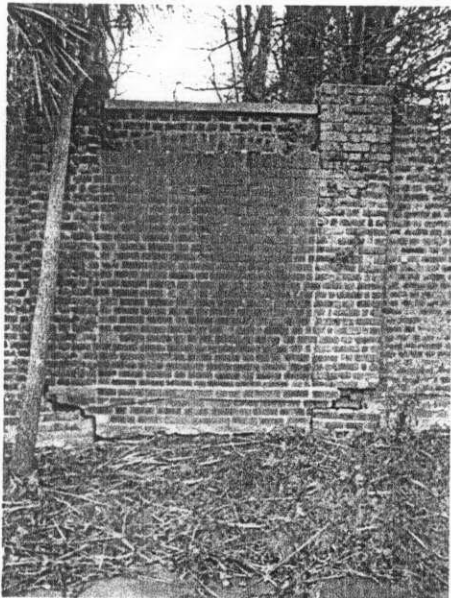
20. Repair internal face of pier as necessary, removing badly damaged bricks and replace like for like. Remove cementitious mortar and re-point the whole.



21. Remove growth within wall. Carefully taken down surrounding brickwork. Re-bed and re-point.

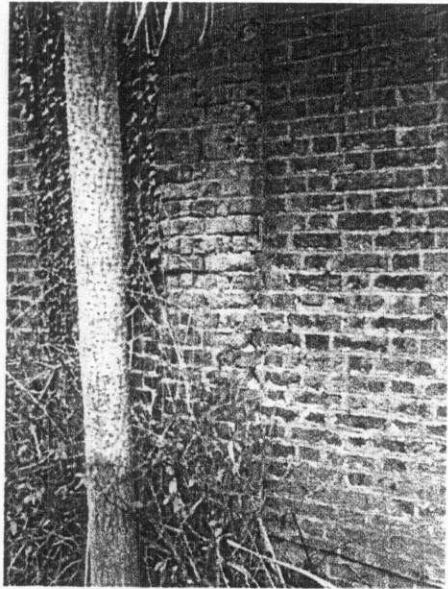


22. Remove vegetation growth at high level. Carefully take down surrounding brickwork. Re-bed and re-point.



23. Make good cracking caused by brick in-fill panel to internal face of blocked up doorway.

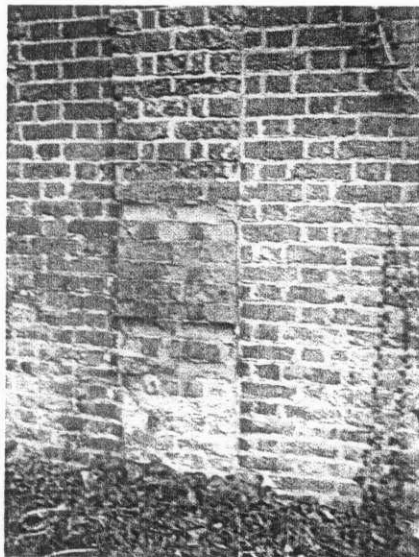
24. Repair and re-paint existing metal doors visible on the external face. Colour t.b.c.



25. Repair internal face of pier as necessary, removing badly damaged bricks and replacing like for like. Re-point the whole.
26. Repair external pier where brickwork has deteriorated. Cut out and replace severely damaged brickwork as necessary. Re-point the whole.
27. Repair external pier where brickwork has deteriorated. Cut out and replace severely damaged brickwork as necessary. Re-point the whole.
28. Repair external pier where brickwork has deteriorated. Cut out and replace severely damaged brickwork as necessary. Re-point the whole.
29. Repair external pier where brickwork has deteriorated. Cut out and replace severely damaged brickwork as necessary. Re-point the whole.



30. Carefully repair and re-seat re-painted existing iron spikes.



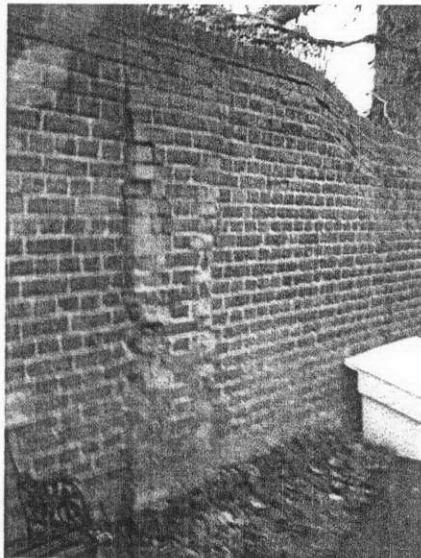
31. Repair external pier where brickwork has deteriorated. Cut out and replace severely damaged brickwork as necessary.

Re-point the whole.

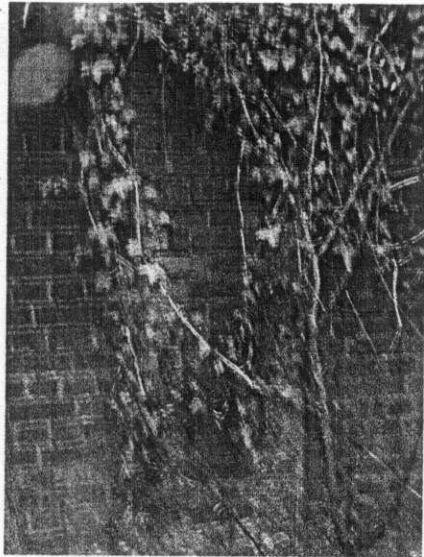




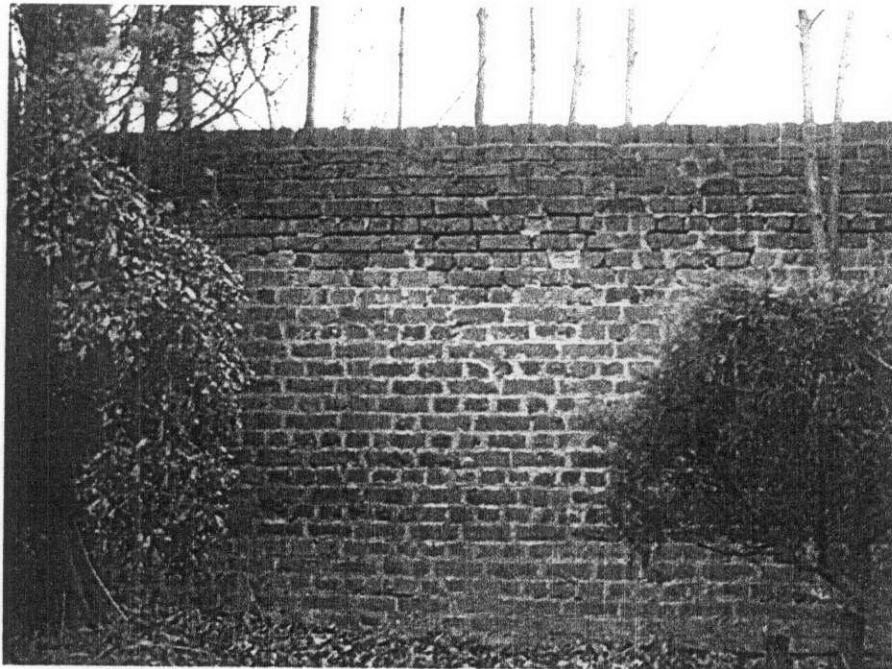
32. Repair external pier where brickwork has deteriorated. Cut out and replace severely damaged brickwork as necessary.  
Re-point the whole.



33. Repair external pier where brickwork has deteriorated. Cut out and replace severely damaged brickwork as necessary.  
Re-point the whole.



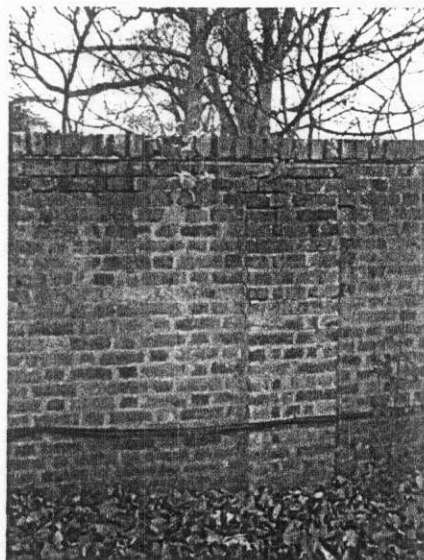
34. Repair external pier where brickwork has deteriorated. Cut out and replace severely damaged brickwork as necessary.  
Re-point the whole.
35. Repair external pier where brickwork has deteriorated. Cut out and replace severely damaged brickwork as necessary.  
Re-point the whole.



36. Re-point brickwork at high level.



37. Carefully take down serpentine soldier course and re-bed and re-point where blown away from rest of brickwork.



38. Re-point wall at high level.

39. Re-point this stretch of wall where damaged by vehicle spray.