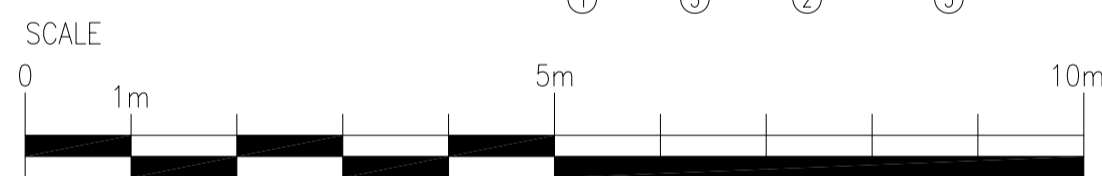
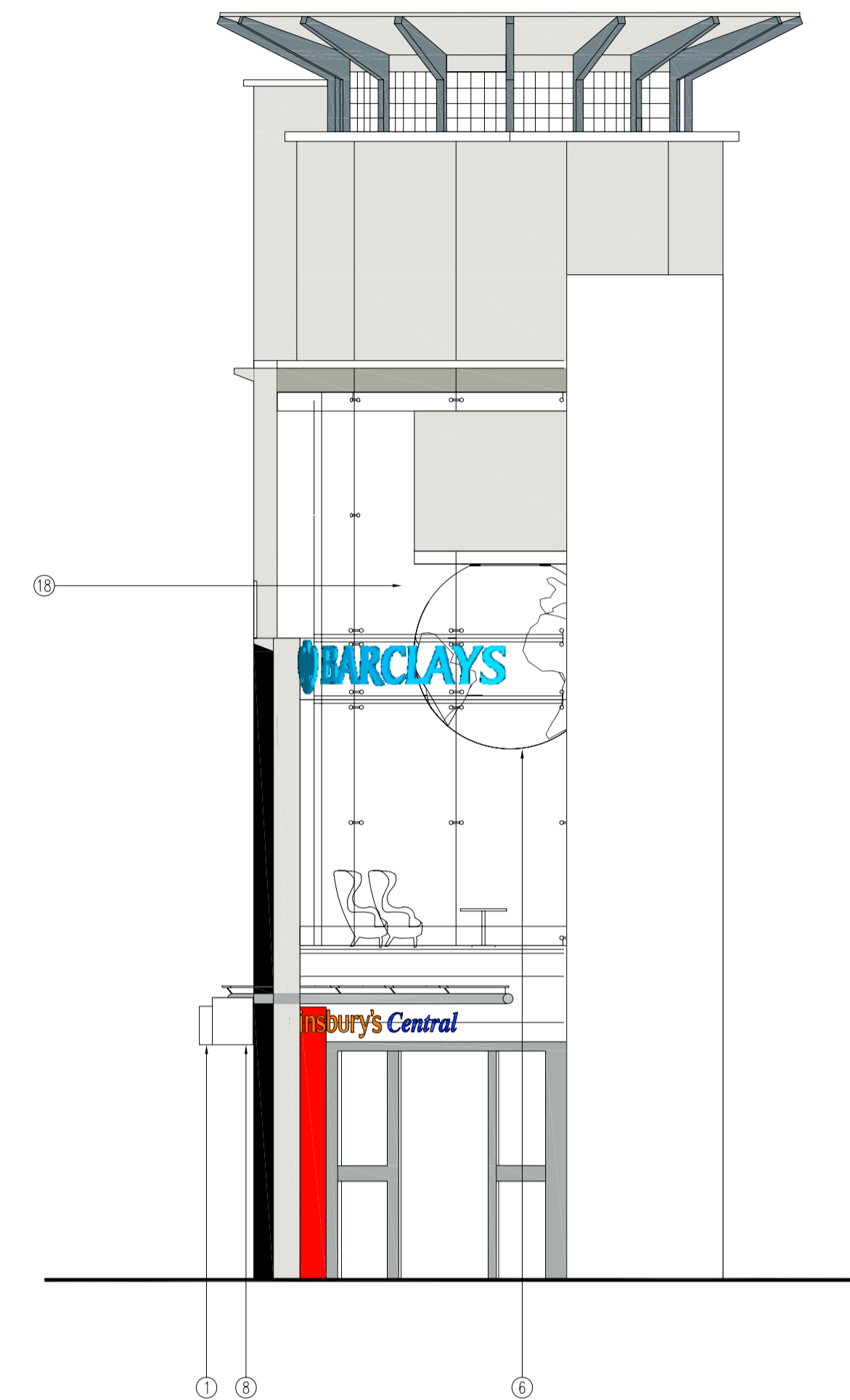
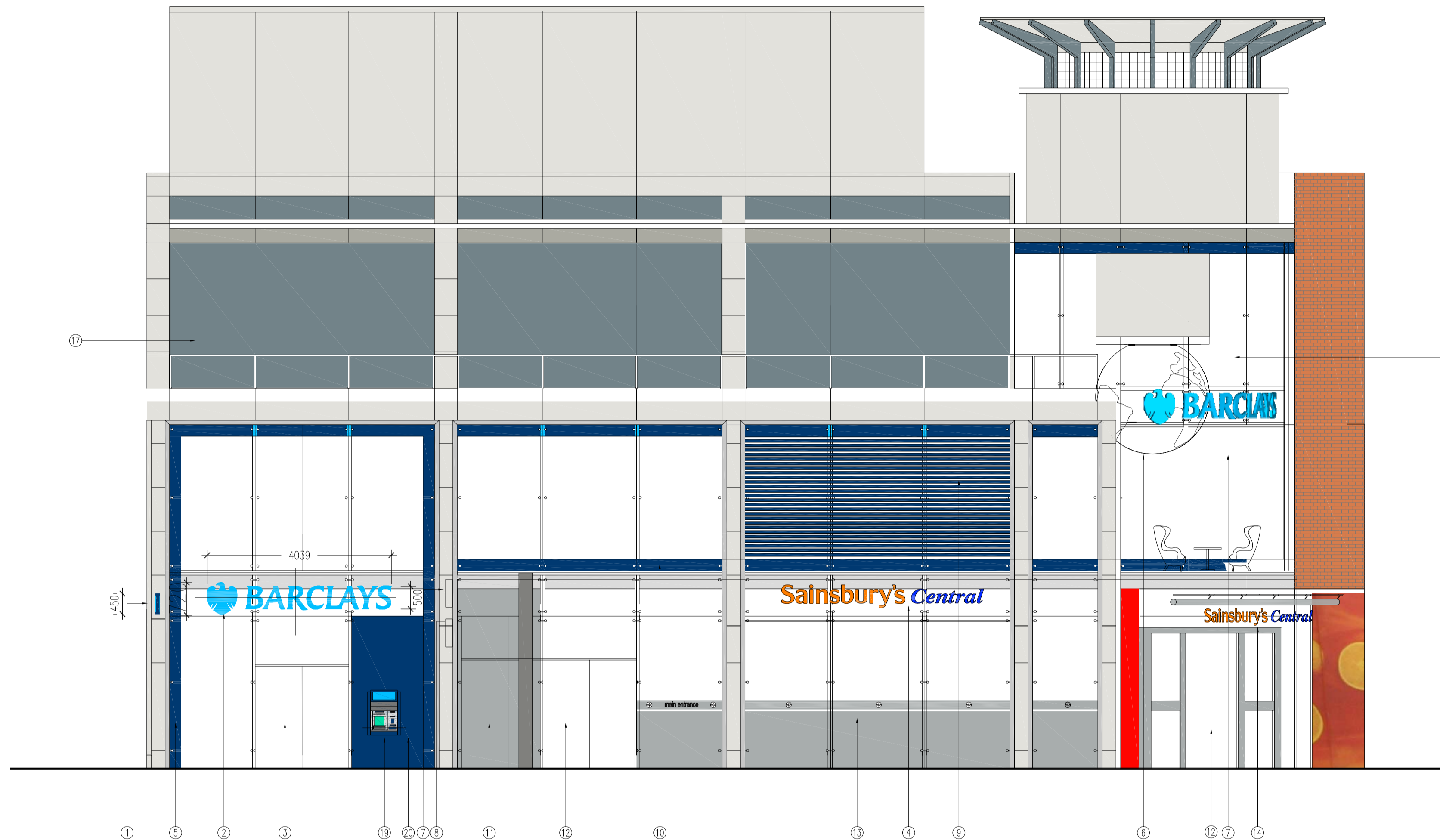


Front Elevation Tottenham Court Road

Side Elevation Tottenham Court Road



Elevation Key

- | | | | | |
|---------------------------------------------------------------------------------------|-----------------------------------------------------------------------------|-------------------------------------------|--------------------------------------------------------------|-------------------------------------|
| ① New Projecting Sign 700mm | ⑤ New Dark Blue feature vinyl 250mm wide applied to inside existing glazing | ⑨ New Dark Blue feature vinyl 75mm strips | ⑬ Sainsbury's frosted vinyl | ⑰ Existing vinyl windows |
| ② New internally illuminated Barclays sign (internally mounted) | ⑥ New Globe internally illuminated (internally mounted) | ⑩ New High Level feature vinyl 250mm wide | ⑭ Sainsbury's External illuminated individually letters sign | ⑱ Existing Double Void Glass window |
| ③ New Auto Doors to match existing | ⑦ New internally illuminated Barclays sign (internally mounted) | ⑪ 'Sainsbury's' Fire Escape | ⑮ Sainsbury's External Branding | ⑲ New Atm |
| ④ 'Sainsbury's' Internally illuminated individually letters sign (internally mounted) | ⑧ 'Sainsbury's' Internally illuminated projecting sign | ⑫ 'Sainsbury's' secondary entrance | ⑯ Sainsbury's Main Entrance | ⑳ New Dark Blue vinyl |

NOTE
This drawing has been prepared from historical information that cannot be guaranteed accurate. Responsibility is not accepted for errors made by others in scaling from this drawing. All construction information should be taken from figured dimensions only. All dimensions should be checked on site prior to the manufacture of any components

HATCHING

| | | |
|--|--|--|
| | | |
| | | |
| | | |
| | | |

KEY

| | |
|------|------------------------------|
| BM | = Branch Manager |
| ABM | = Assistant Branch Manager |
| CM | = Cash Manager |
| PB | = Personal Banker |
| LB | = Local Business |
| PREM | = Premier Banking |
| BFP | = Barclays Financial Planner |
| BHF | = Barclays Home Finance |
| SBO | = Student Banking Officer |
| MU | = Multiple Use |

S&W STOREPLANNING™

EXMOUTH HOUSE
3 - 11 PINE STREET
LONDON
EC1R 0JL

PHONE: 020 7713 9900
FAX: 020 7713 9910
swdesign@swsdesign.co.uk

Project
TOTTENHAM COURT RD

Units 6-7
6-17 Tottenham Court
London
PIM NO.



Drawing Title
**TOTTENHAM COURT RD
PROPOSED ELEVATIONS
FLAGSHIP 2008**

| | | | |
|------------------------------|-----------------|----------------------------------|--------------------|
| Branch Sort Code XX-XX-XX | Branch ID XX | Supplier Project No D8758-018 | Date 06 06 2008 |
| Scale 1:100@A2 | Drawn DC | Checked | Revision |
| Org.No D8758-018-3010 | | | |

Barclays FM Project No.DC