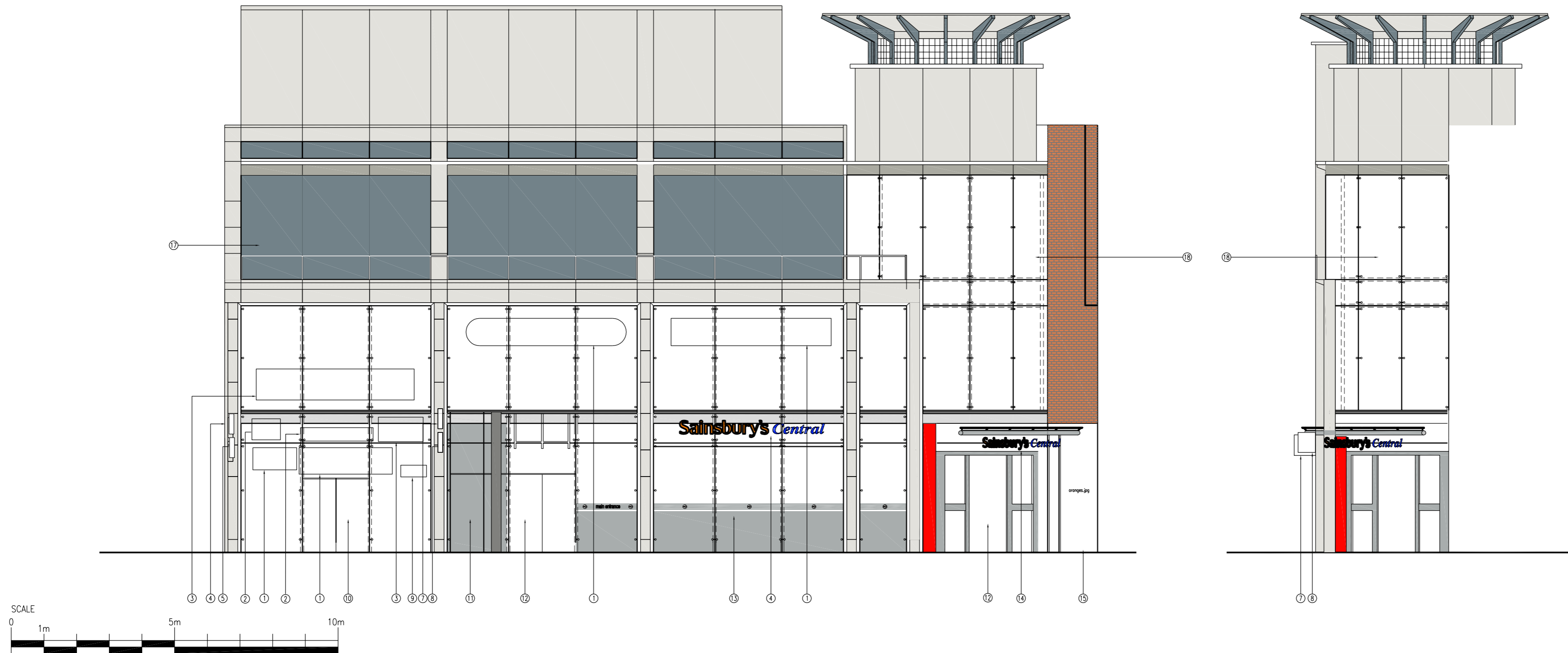


Front Elevation Tottenham Court Road

Side Elevation Tottenham Court Road



Elevation Key

- | | | | | |
|---|--|----------------------------------|--|-----------------------------------|
| ① 'Easy Everything' Internally illuminated box sign (inside) | ⑤ 'Easy Everything' Internally projecting sign | ⑨ Open sign | ⑬ Sainsbury frosted vinyl | ⑰ Unit 6-7 vinyl windows |
| ② 'Subway' Internally illuminated box sign (inside) | ⑥ 'Subway' Internally illuminated projecting sign | ⑩ Main entrance to units | ⑭ Sainsbury's External illuminated individually letters sign | ⑱ Unit 6-7 Double Void glass drum |
| ③ 'IT Resource' Internally illuminated box sign (inside) | ⑦ 'IT Resource' Internally illuminated projecting sign | ⑪ Fire Escape Sainsbury's | ⑮ Sainsbury's External Branding | ⑲ |
| ④ 'Sainsbury's' Internally illuminated individually letters sign (inside) | ⑧ 'Sainsbury's' Internally illuminated projecting sign | ⑫ Sainsbury's secondary entrance | ⑯ Sainsbury's Main Entrance | ⑳ |

NOTE
This drawing has been prepared from historical information that cannot be guaranteed accurate. Responsibility is not accepted for errors made by others in scaling from this drawing. All construction information should be taken from figured dimensions only. All dimensions should be checked on site prior to the manufacture of any components.

KEY
BM = Branch Manager
ABM = Assistant Branch Manager
CM = Cash Manager
PB = Personal Banker
LB = Local Business
PREM = Premier Banking
BFP = Barclays Financial Planner
BHF = Barclays Home Finance
SBO = Student Banking Officer
MU = Multiple Use

HATCHING

S&W STOREPLANNING™

EXMOUTH HOUSE
3 - 11 PINE STREET
LONDON
EC1R 0JL
PHONE: 020 7713 9900
FAX: 020 7713 9910
swdesign@swwdesign.co.uk

Project
TOTTENHAM COURT RD

Units 6-7
6-17 Tottenham Court
London
PIM NO. tbc



Drawing Title
**TOTTENHAM COURT RD
EXISTING ELEVATIONS
FLAGSHIP 2008**

Branch Sort Code tbc	Branch ID tbc	Supplier Project No D8758-018	Date 06 06 2008
Scale 1:100@A2	Drawn DC	Checked	Revision
Drg.No D8758-018-300			
Barclays FM Project No.DC			