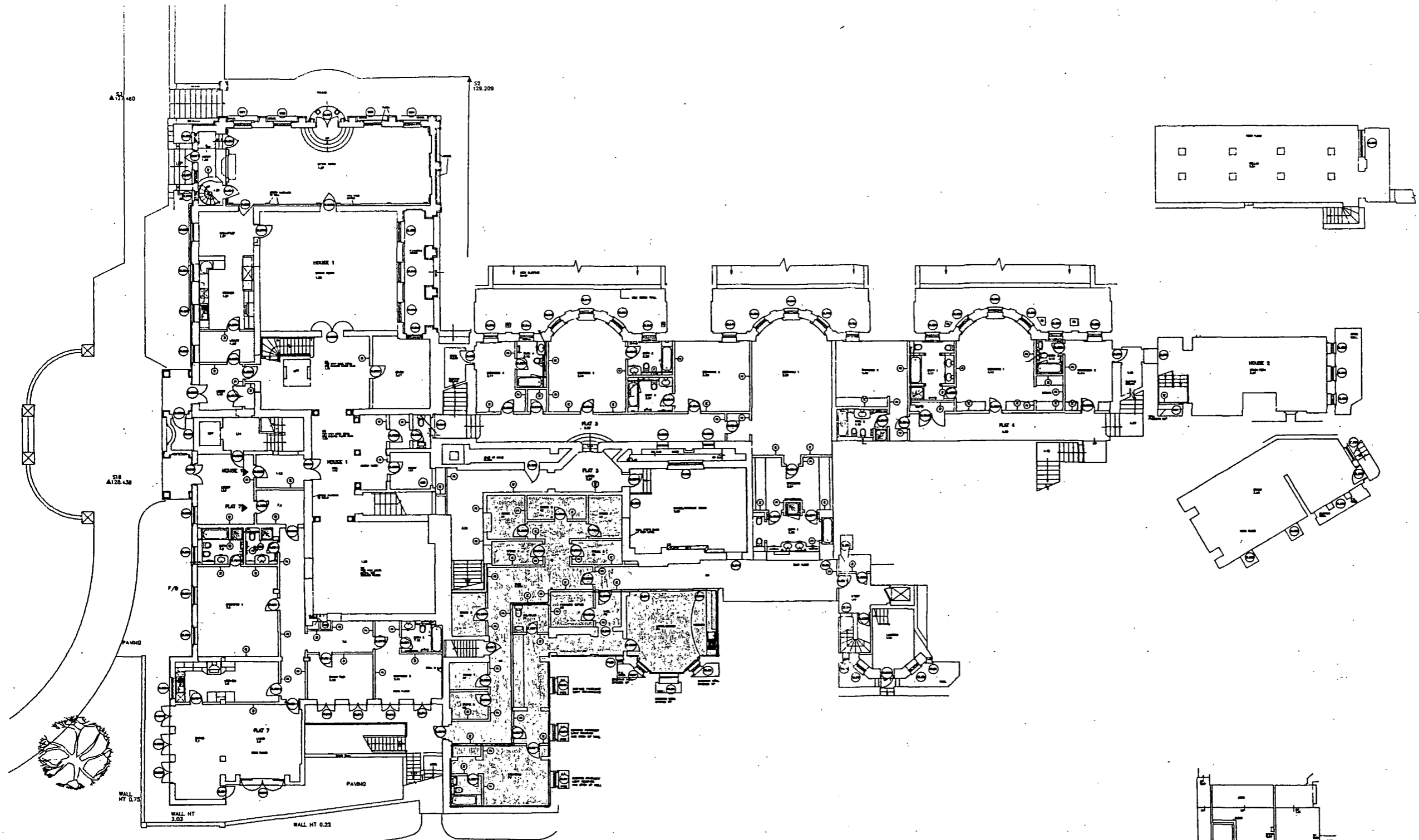
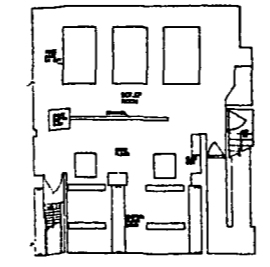


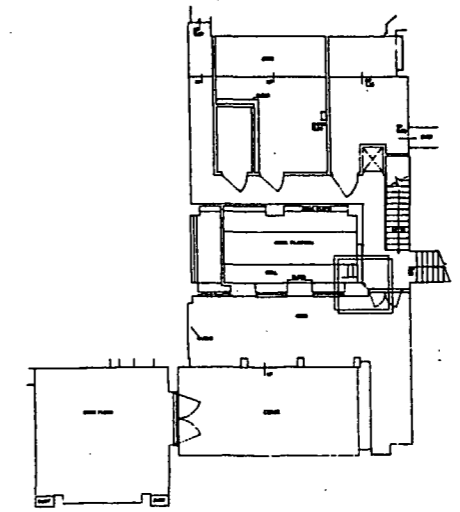
NOTES
FOR SUPPLEMENTARY MEASUREMENT TYPES OF WORK
ALL CONSTRUCTION PLEASE REFER TO
DRAWING No. 2467 (1) 11



LOWER GROUND FLOOR PLAN



LOWER BASEMENT



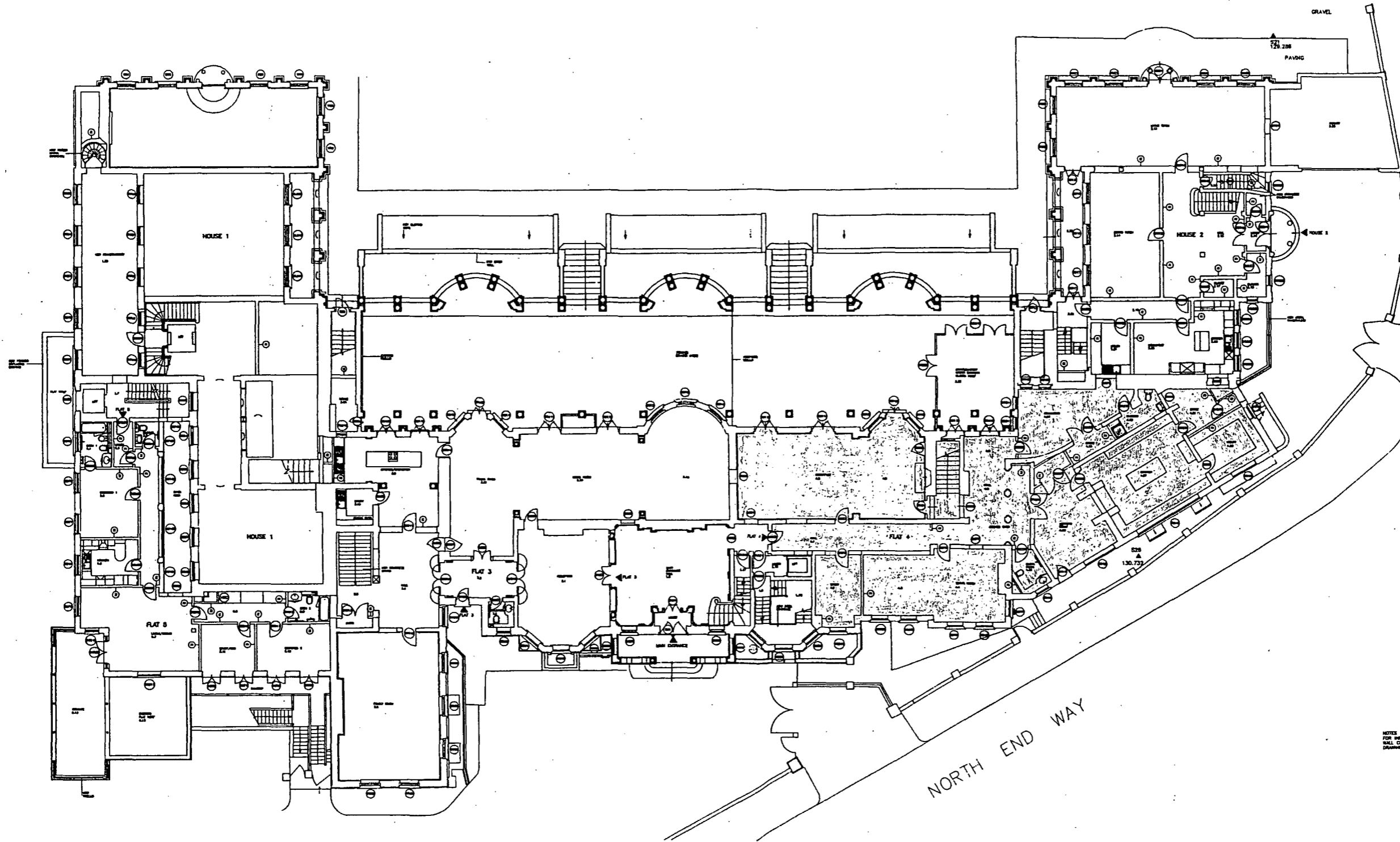
BASEMENT

- Rev D 15/8/95 Add Door and Window Numbers. Modify numbers in to Flat 4 & 5. Generally modify levels with and in/8 notes. Add main floor levels. Modify level of 0.2 to 0.18. Remove WC from House 1. Add lift and adjacent stairs to House 1. Return 02/23/8 to original opening. Add kitchen. Add Staircase and Landing. Add Staircase. Add wall Lym steps. Add stairs and Parters flat. Remove Flat 6. Add lift and remove WC from House 1.
- Rev C 17/8/95 Add Changing rooms, stairs to Gymnasium and ready To room AD
- Rev B 12/9/95 Add Door and Space Numbers
- Rev A 18/9/95 Add Door and Window Numbers. Modify numbers to Flat 4

DRAWING NUMBER	JOB
2467 (1) 1D	Inverforth House London NW3
Lower Ground Floor Plan	

SCALE	DATE	DRAWN BY
1:100	8/95	ti-cod

Rottenberg Associates Ltd Architects
134 Gloucester Avenue London NW18JA
TELEX 8954844 TEL 071-586 4343 FAX 071-722 0321



NOTES
 FOR INFORMATION REQUIREMENTS TYPES OF NEW
 WALL CONSTRUCTION PLEASE REFER TO
 DRAWING No. 2467 (1) 211

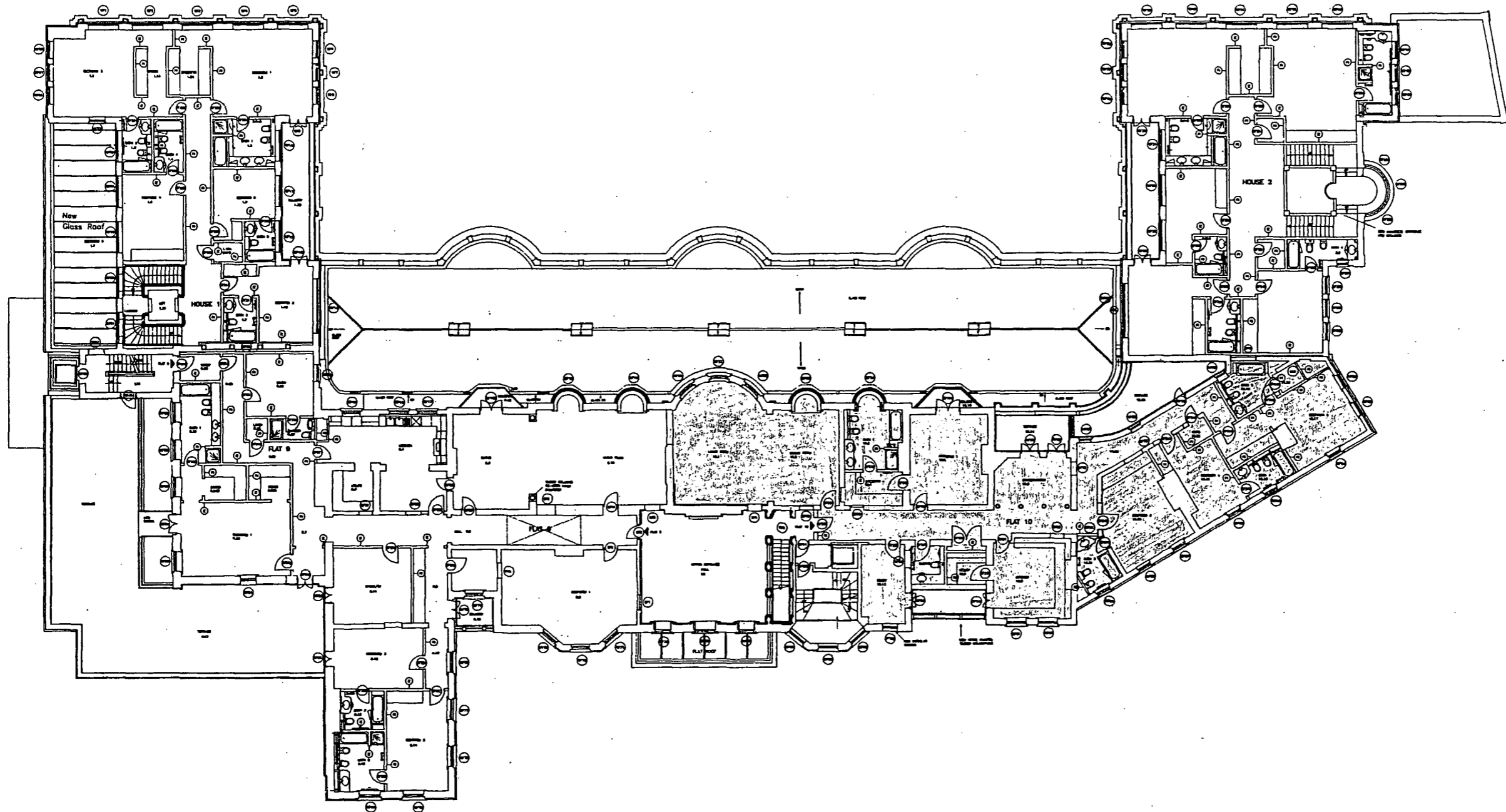
- Rev C 20/6/85 Generally modify brick piers. Add lift and elliptical
 stair to House 1. Add main ducts. Add niches.
 Add side information. Remove Flat 8 and modify
 new combined layout. Add wall type logs. Modify
 stairs to House 1 including addition of lift.
- Rev B 22/3/85 Modify Door and Space Numbers
 Modify WC/Chairs to Flat 8
 Cupboards to Hall 3.4
- Rev A 18/3/85 Add Door and Window Numbers

DESIGNED BY DEVELOPER	JOB Inverforth House London NW3
2467 (1) 2c	
DRAWN BY	
Ground Floor Plan	

PROPOSED GROUND FLOOR PLAN

CAD REF	SCALE	DATE	DRAWN BY
	1:100	20/06/85	H. Cnd

NOTES
 FOR INFORMATION REGARDING TYPE OF NEW
 WALL CONSTRUCTION PLEASE REFER TO
 DRAWING No. 2467 (0) 211

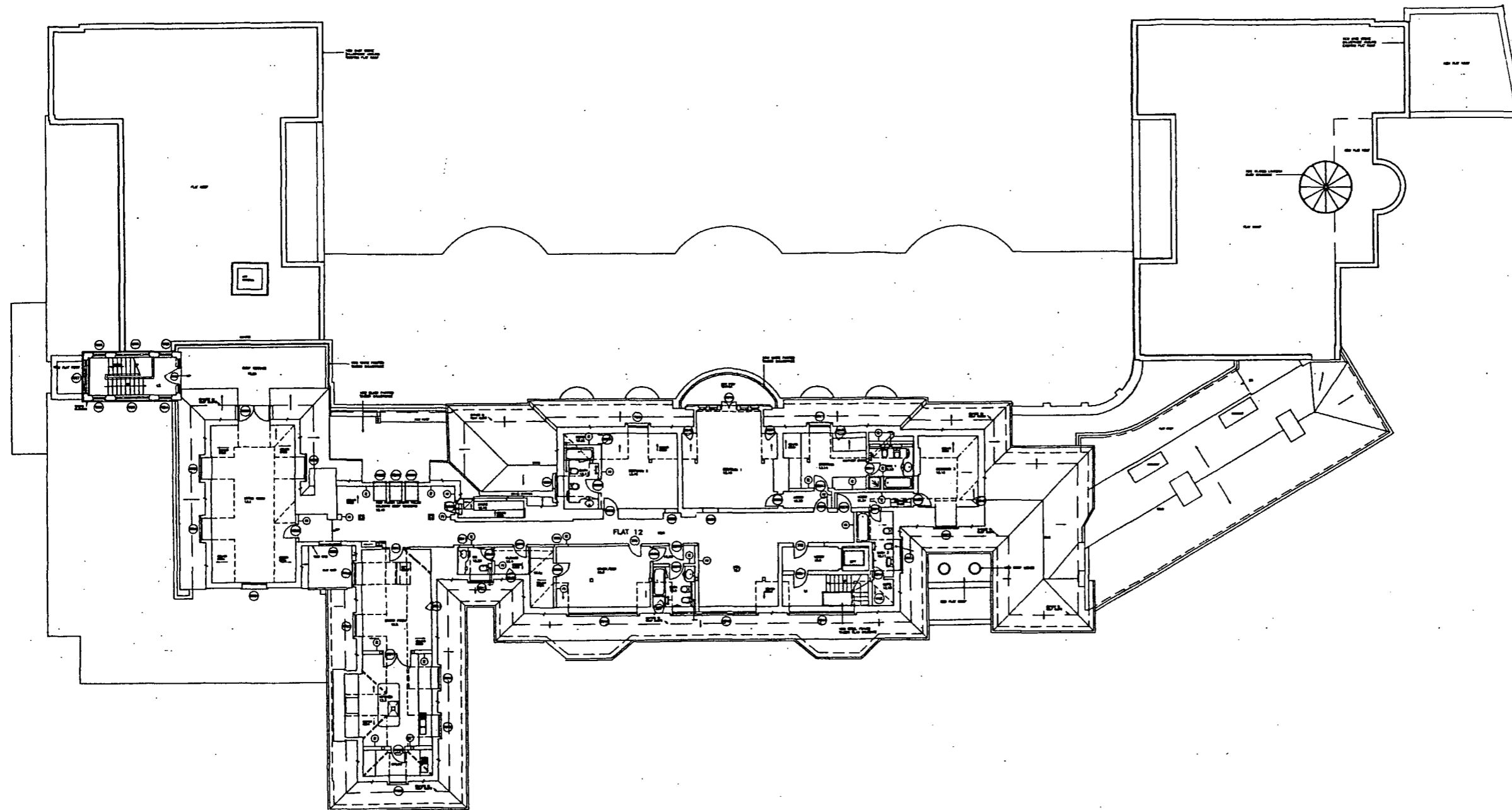


PROPOSED FIRST FLOOR PLAN

- Rev C 23/8/95 Generally modify kitchen and add central island and adjacent store to kitchen. Add new floor slabs and columns. Add site layout. Remove Part 11 and Part 9 and modify new retained spaces. Add wall type tags.
- Rev B 12/8/95 Add Door and Window Numbers. Modify Part 11 and 10 elevations. Part 11 layout.
- Rev A 16/8/95 Add Door and Window Numbers.

Inverforth House	
2467 (1) 03c	London NW3
First Floor Plan	
Scale	1:100
Date	8/95
Drawn by	ll-cad
Rottenberg Associates Ltd Architects 134 Gloucester Avenue London NW18JA TEL: 0854844 TEL 071-266 4343 FAX 071-722 0321	

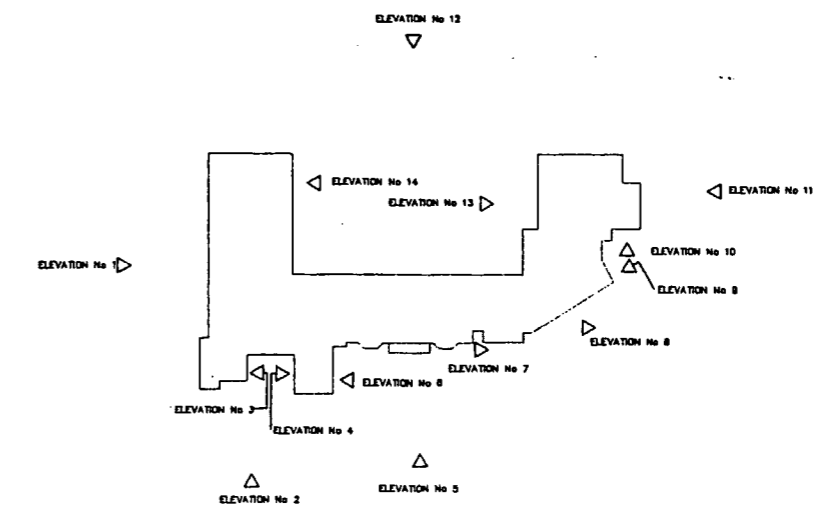
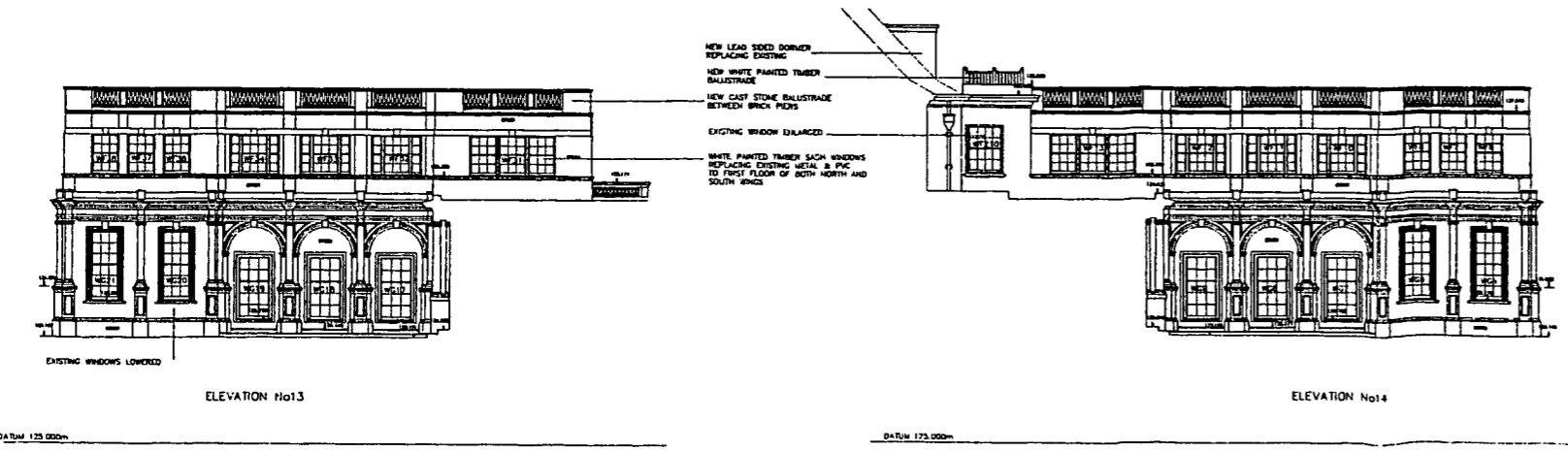
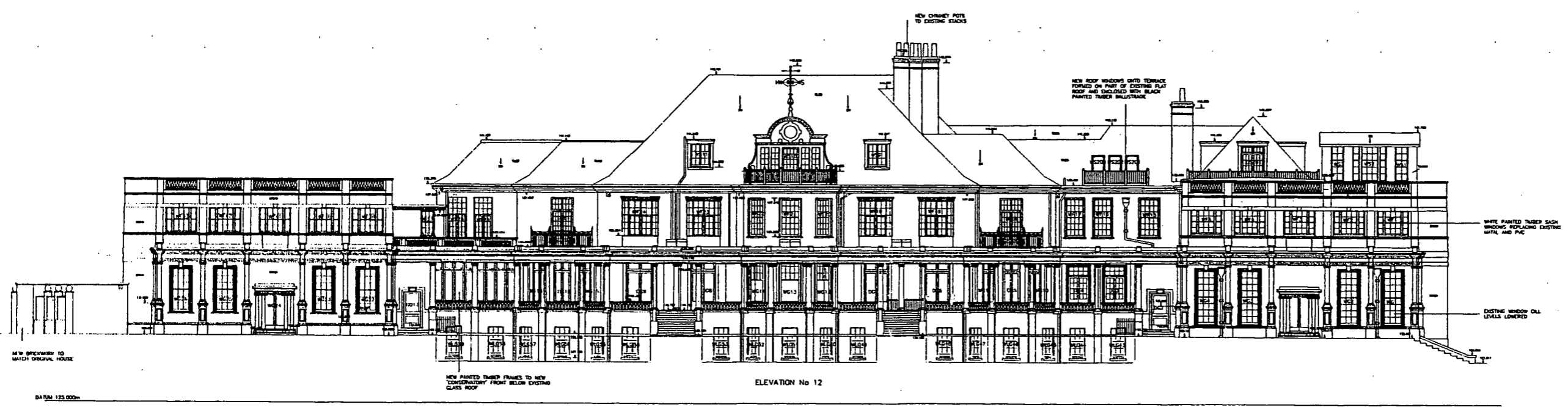
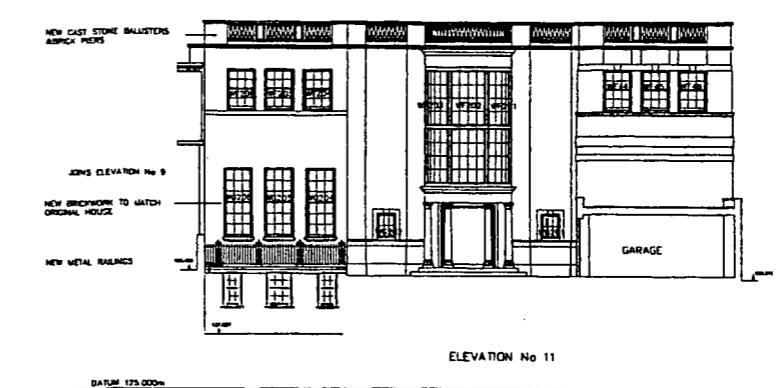
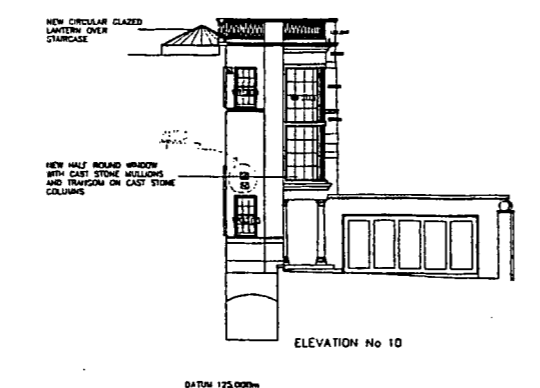
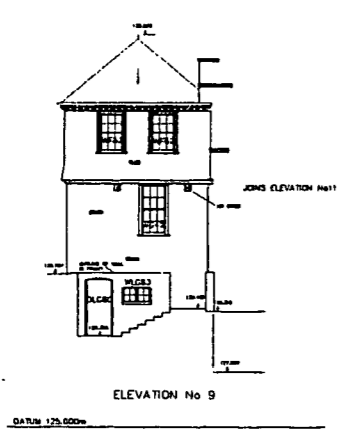
NOTES
 FOR INFORMATION REGARDING TYPES OF NEW WALL
 CONSTRUCTION PLEASE REFER TO
 DRAWING No. 2467 (B) 211



PROPOSED SECOND FLOOR PLAN

- Rev D 27/6/85 Raise living room floor one step. Show gutters and steps. Modify kitchen layout. Add utility room. Add wall type logs.
- Rev C 18/6/85 Add Door and Space Numbers
- Rev B 17/5/85 Add Door and Space Numbers. Modify WC/Chairs & Add columns to corridor opposite DS12
- Rev A 16/5/85 Add Door and Window Numbers

Client Name		Inverforth House	
Drawing No.		2467 (1) 040	
Location		London NW3	
SECOND FLOOR PLAN			
Scale	Date	Drawn By	Checked By
1:100	7/85	ILCAD	
Rottenberg Associates Ltd Architects 134 Gloucester Avenue London NW18JA TELEX 2854844 TEL 071-288 4343 FAX 071-722 0321			



REV A 22/8/95. Modify space between WF04-WF205 and WF206 on Elevation 11. Revised 10018 on Elevation 8. Station number 405. 31. (Elevation 11) 20. 31. (Elevation 13) 22.3.25.28 in original sheet WF28 (Elevation 12).

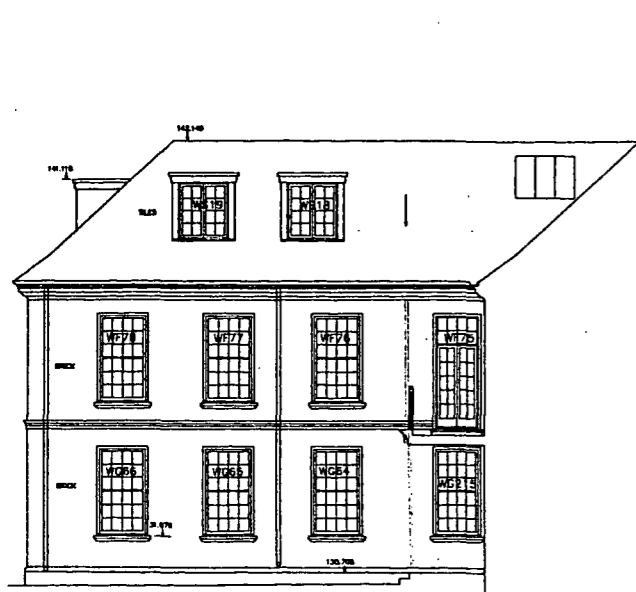
DRAWING NUMBER		JOB	
246.1 (1) BA		Inverforth House London NW3	
DRAWING		Elevations 9 to 14 As Proposed	
CAU REF	SCALE	UNIT	UNITARY MP
Drummond/prop/arc	1:100	M	Head

Rottenberg Associates Ltd Architects
134 Gloucester Avenue London NW18JA
TEL 021-586 4343 FAX 021-727 0321



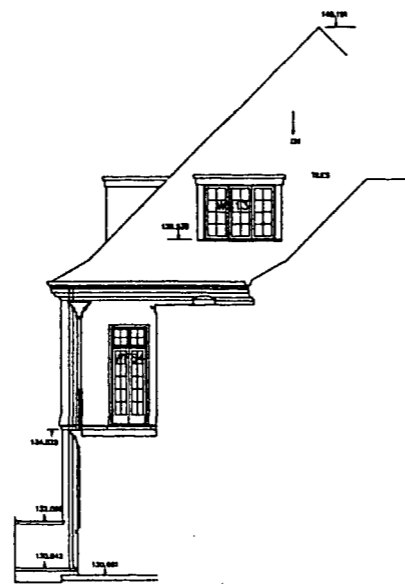
ELEVATION No 5

DATUM 125.000m



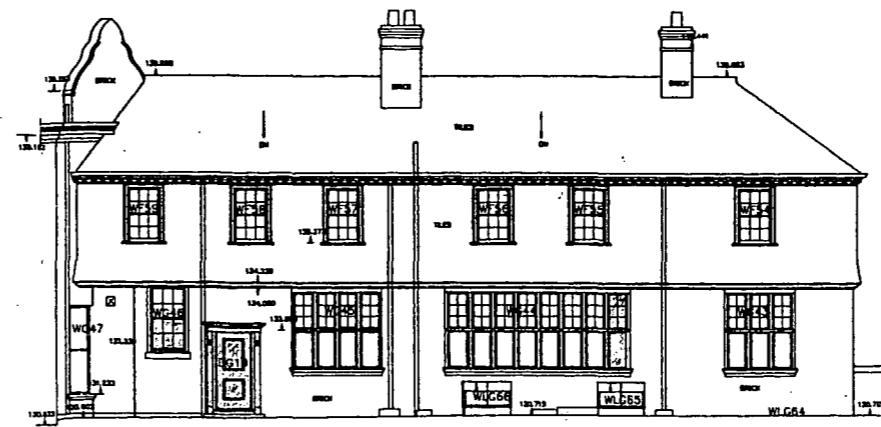
ELEVATION No 6

DATUM 125.000m



ELEVATION No 7

DATUM 125.000m



ELEVATION No 8

DATUM 125.000m

REV A 28/8/95 Add new windows WC207, WC210 to Elevation 5. Return DG19 and WC46 to original openings. Return WC44 to original width.

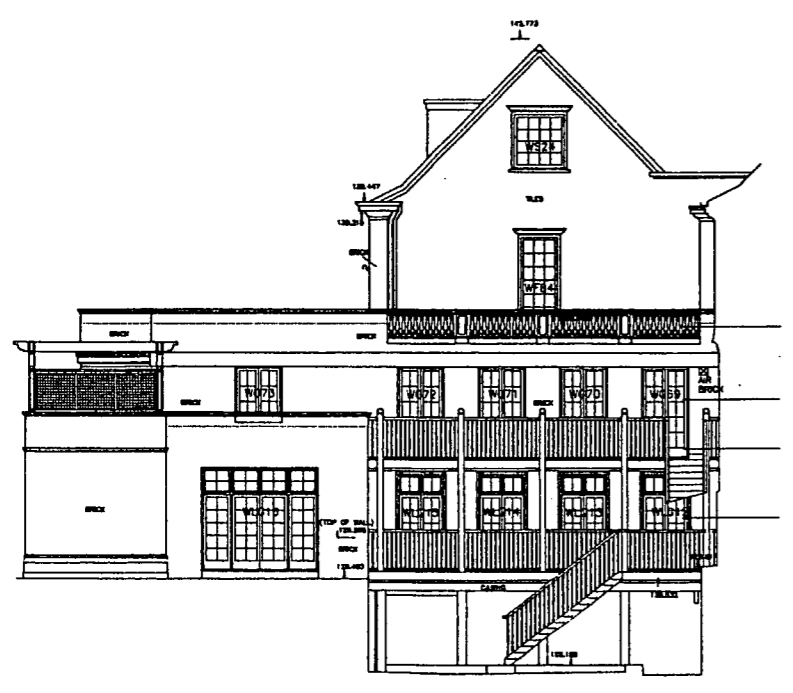
DRAWING NUMBER	JOB		
2467 (1) 9A	Inverforth House London NW3		
	DRAWING		
	Proposed Elevations Numbers 5-8		
CAO. REF	SCALE	DATE	DRAWN BY
drawings\2467\brgs\br-wid2	1:100	8/95	tl.Cad

Rottenberg Associates Ltd Architects
134 Gloucester Avenue London NW18JA
TEL 071-586 4343 FAX 071-722 0321



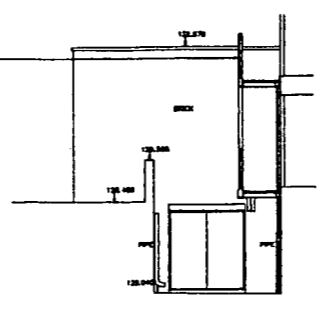
DATUM 125.000m

ELEVATION No1



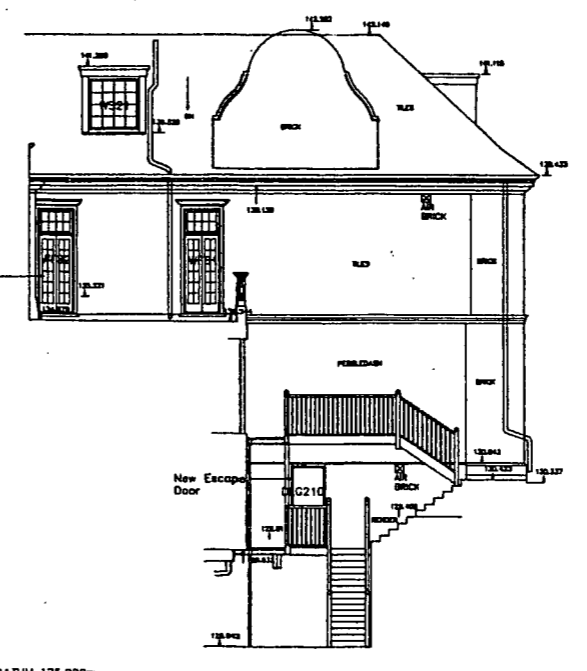
DATUM 125.000m

ELEVATION No2



DATUM 125.000m

ELEVATION No3



DATUM 125.000m

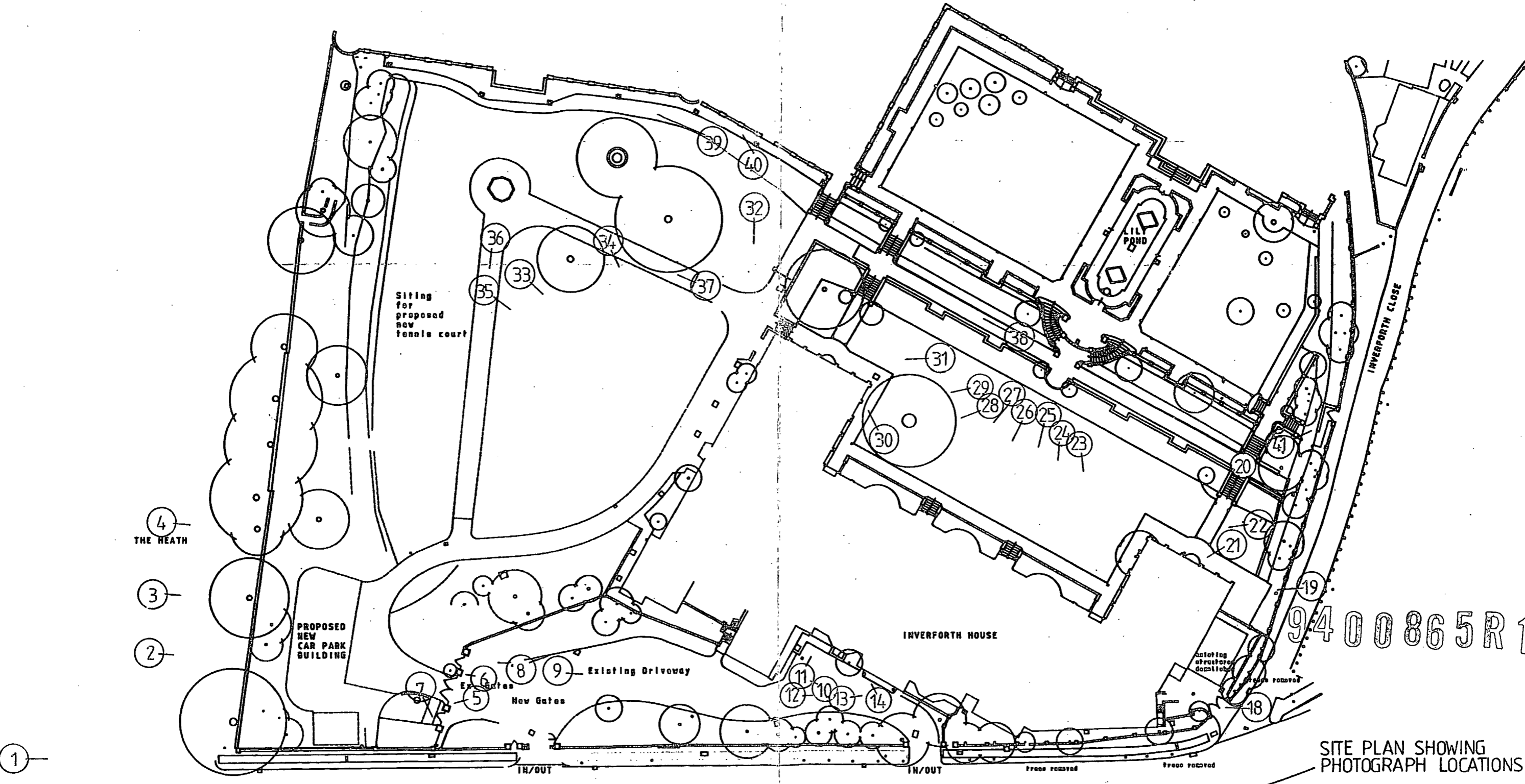
ELEVATION No4

REV A 28/895 Remove timber trellis from Flat 9 terrace on Elevation 1
Replace WS7 on Elevation 1 with new window
Extend cheek of dormer on Elevation 1

DRAWING NUMBER	JOB
2467 (1) 10A	Inverforth House London NW3
	Proposed elevations 1-4

CAD REF	SCALE	DATE	DRAWN BY
drawings\2467\brge\br-lev1	1:100	8/95	TL CAD

Rottenberg Associates Ltd Architects
134 Gloucester Avenue London NW18JA
TELEX 8954944 TEL 071-586 4343 FAX 071-722 0321



9400865R1

SITE PLAN SHOWING PHOTOGRAPH LOCATIONS

Drwg. 2467/18

Inverforth House
London NW3

n.t.s. Date 10/94
R.A. Rottenberg Associates Architects
124 Gloucester Avenue London NW1 6BN Tel: 011 853 0343 Fax: 011 722 0321

4 THE HEATH

3

2

1

NORTH END WAY

15 16 17

IN/OUT

IN/OUT

From removed

From removed

existing structure demolished

From removed

LILY POND

INVERFORTH CLOSE

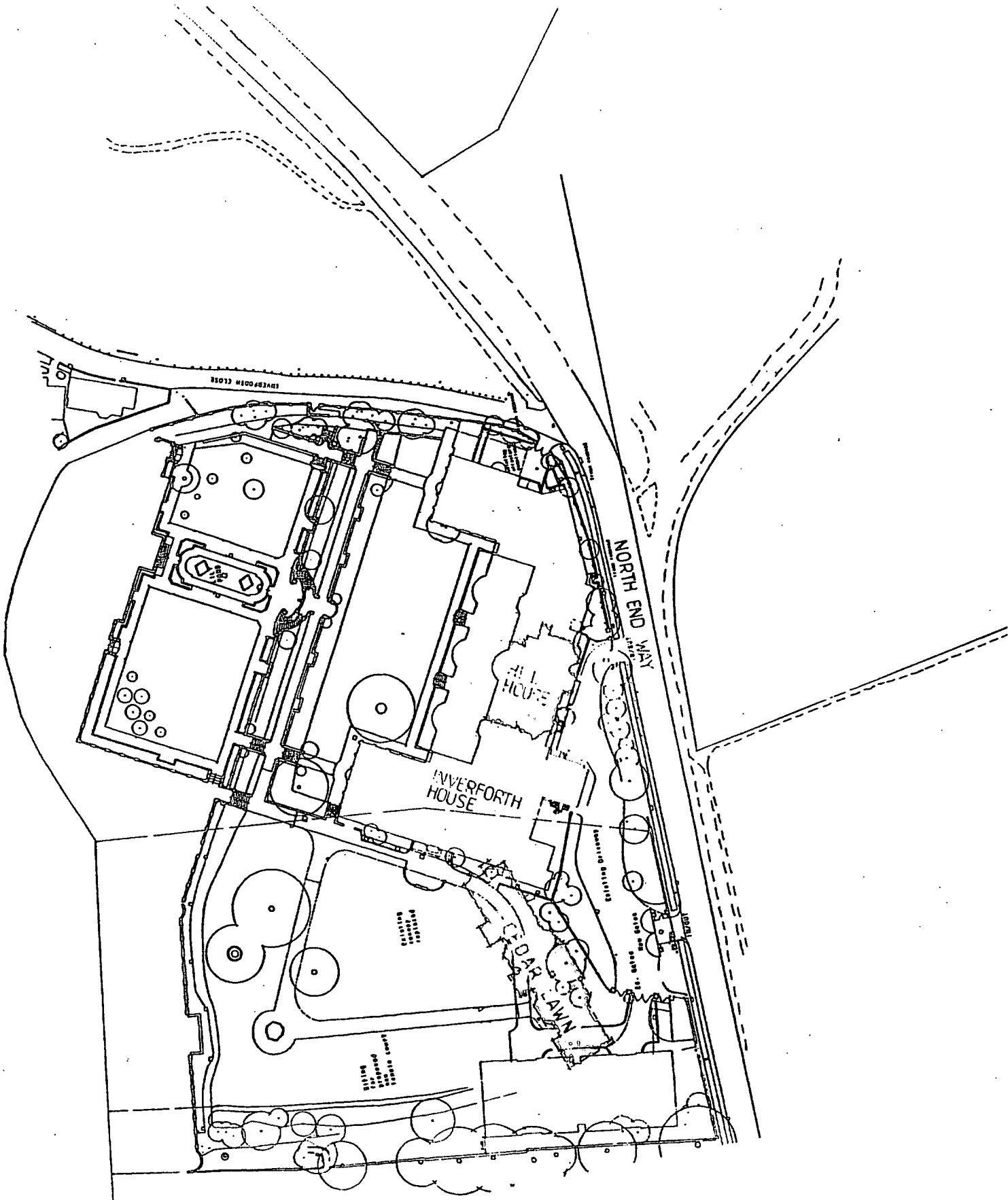
INVERFORTH HOUSE

PROPOSED NEW CAR PARK BUILDING

Siting for proposed new tennis court

Existing Driveway

New Gates



SITE PLAN SHOWING POSITION OF
 EARLIER BUILDINGS.
 Drawing no. 2467/17 Scale: 88ft to 1in

*Iverforth House
 London NW3*

Date OCT '94

Hilteburg Associates Architects
 100, The Quadrant, London NW1 7JH