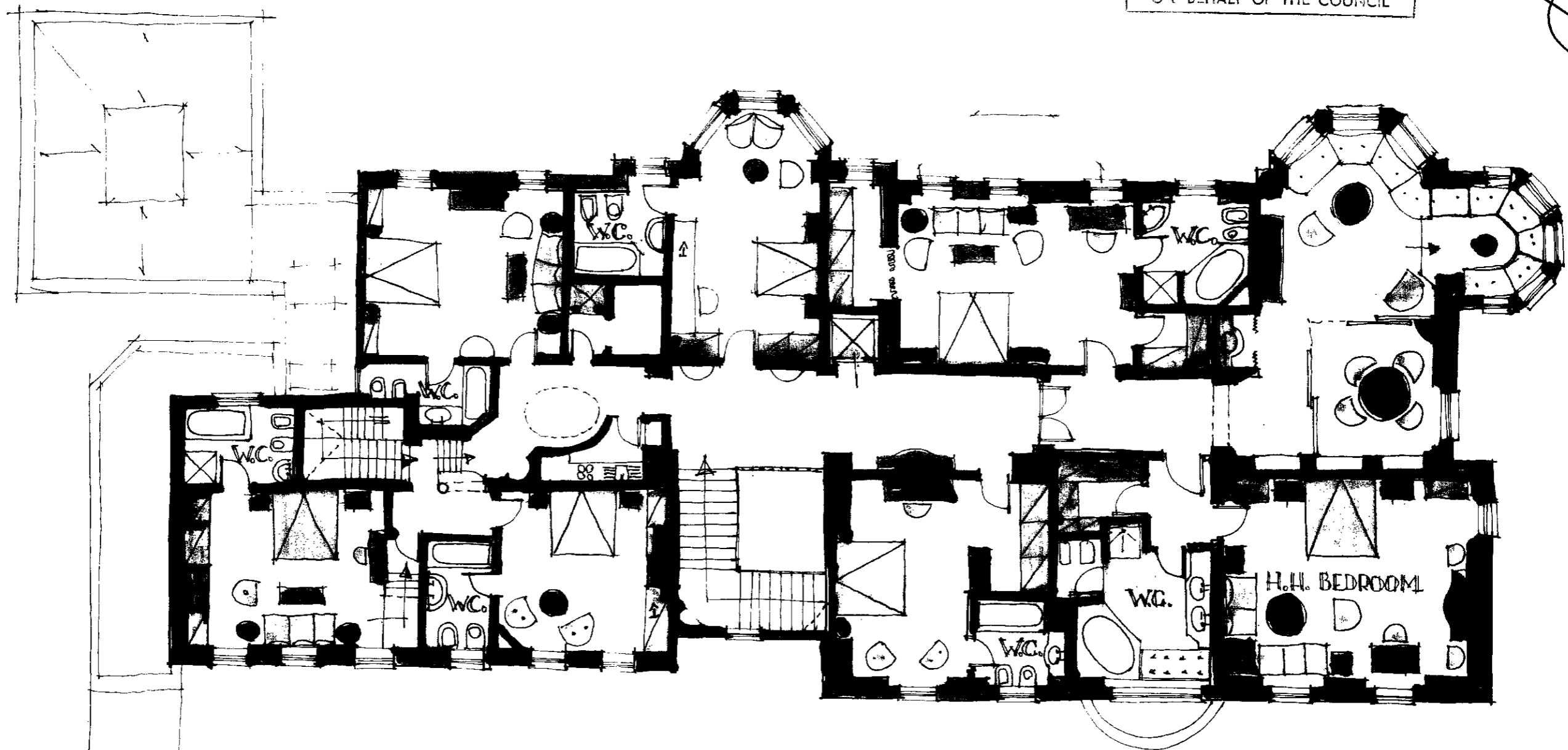


LONDON BOROUGH OF CAMDEN
TOWN AND COUNTRY PLANNING ACTS
19 SEP 1985
PLANS ~~NOT APPROVED~~ APPROVED
ON BEHALF OF THE COUNCIL



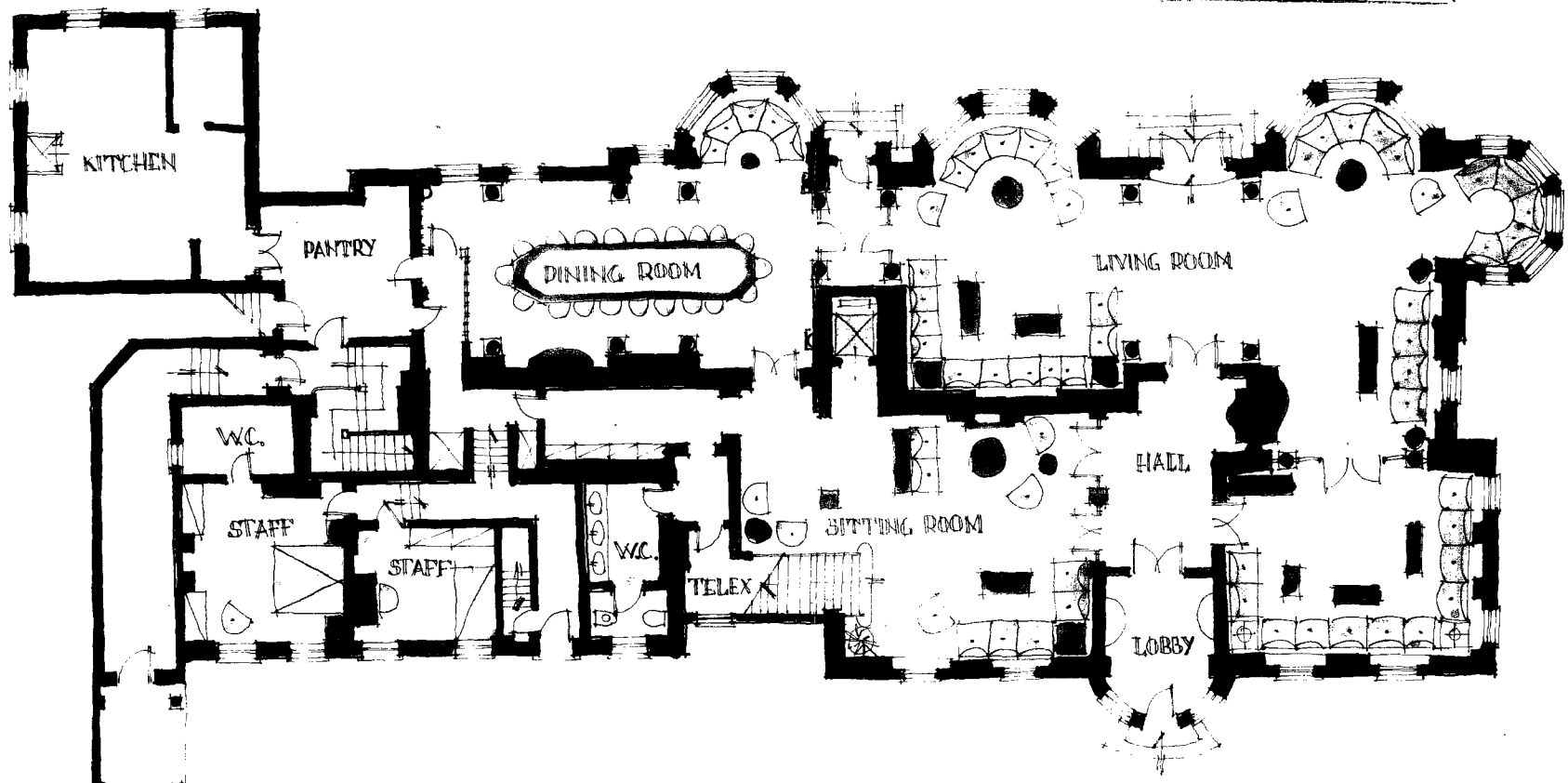
HG 8570273

'BEECHWOOD' HAMPSTEAD LANE • LONDON
FIRST FLOOR
1:100 DRG. N. 002
FURNITURE PLAN N.2



SANDRO PETTI • VIA CASSIA KM. 23,500 ~ ROME ~ ITALY

LONDON BOROUGH OF CAMDEN
TOWN AND COUNTRY PLANNING ACTS
19 SEP 1985
PLANS ~~NOT APPROVED~~ APPROVED
ON BEHALF OF THE COUNCIL



'BEECHWOOD' HAMPSTEAD LANE - LONDON
GROUND FLOOR

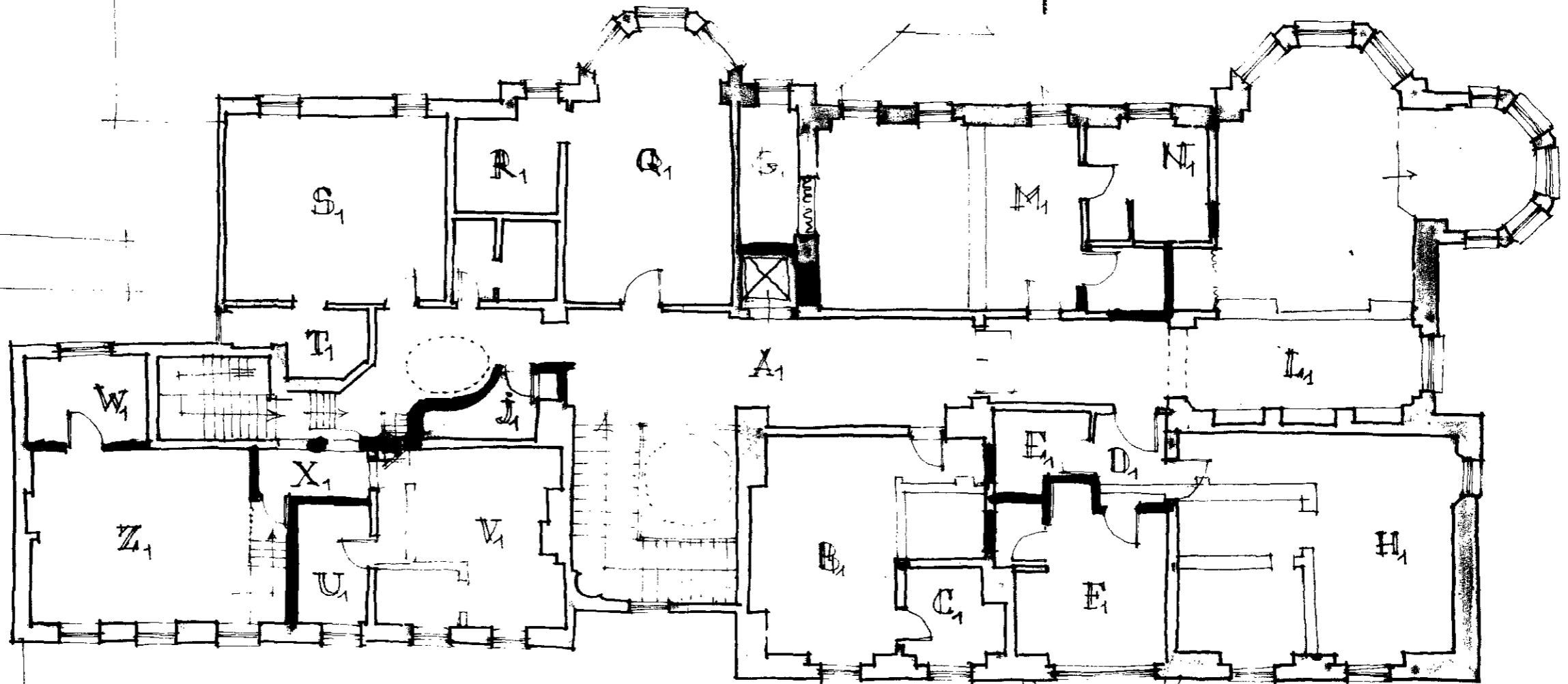
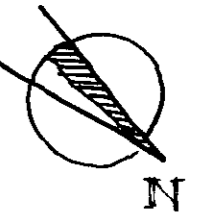
1:100 DRG. NO. 001
FURNITURE PLAN N.1.

HB 8570273



SANDRO PETTI - VIA CASSIA KM. 26,500 - ROME - ITALY

LONDON BOROUGH OF CAMDEN
 TOWN AND COUNTRY PLANNING
 19 SEP 1985
 PLANS ~~NOT APPROVED~~ APPROVED
 ON BEHALF OF THE COUNCIL

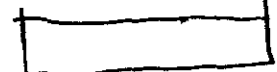
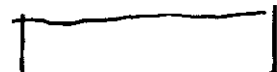






'BEECHWOOD' HAMPSTEAD LANE - LONDON
FIRST FLOOR

A 1:100 ERG. N. 006

HB 8570273



-  NEW FUNCTIONS (K, LIFT)
-  NEW FURNITURE
-  NEW WC.

- RE-CONSTRUCTION 
- EXISTING 
- DEMOLITION 

SANDRO PETTI - VIA CASSIA KM. 23,500 - ROME - ITALY

'BEECHWOOD' HAMSTEAD LANE - LONDON

DETAILS

HB 8570273
ELEVATION 1:20
SECTION 1:1

SANDRO PETTI - VIA SAGGIA, 6/A, 53100 - FIRENZE - ITALY

SECTION C-C

DETAIL 1

HB 8570273

'BEECHWOOD' HAMSTEAD LANE - LONDON

DETAILS

HB 8570273 1

SECTION D-D

DETAIL 2

HB 8570273

'BEECHWOOD' HAMSTEAD LANE - LONDON

DETAILS

HB 8570273 1

'BEECHWOOD' HAMSTEAD LANE - LONDON

DETAILS

HB 8570273 1

'BEECHWOOD' HAMSTEAD LANE - LONDON

DETAILS

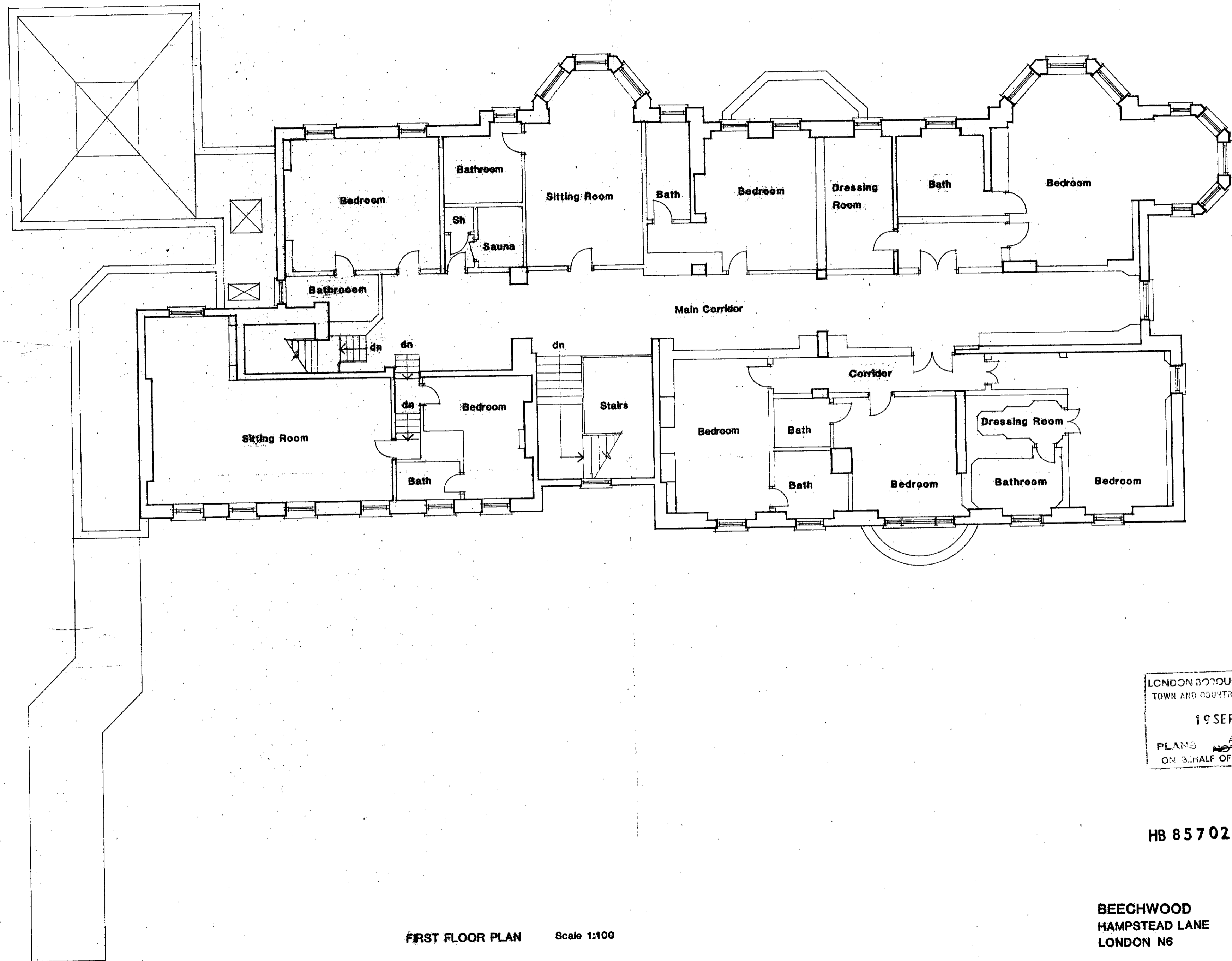
HB 8570273 1

'BEECHWOOD' HAMSTEAD LANE - LONDON

DETAILS

HB 8570273 1

DETAILS
COPYRIGHT
SANDRO PETTI
FIRENZE - ITALY

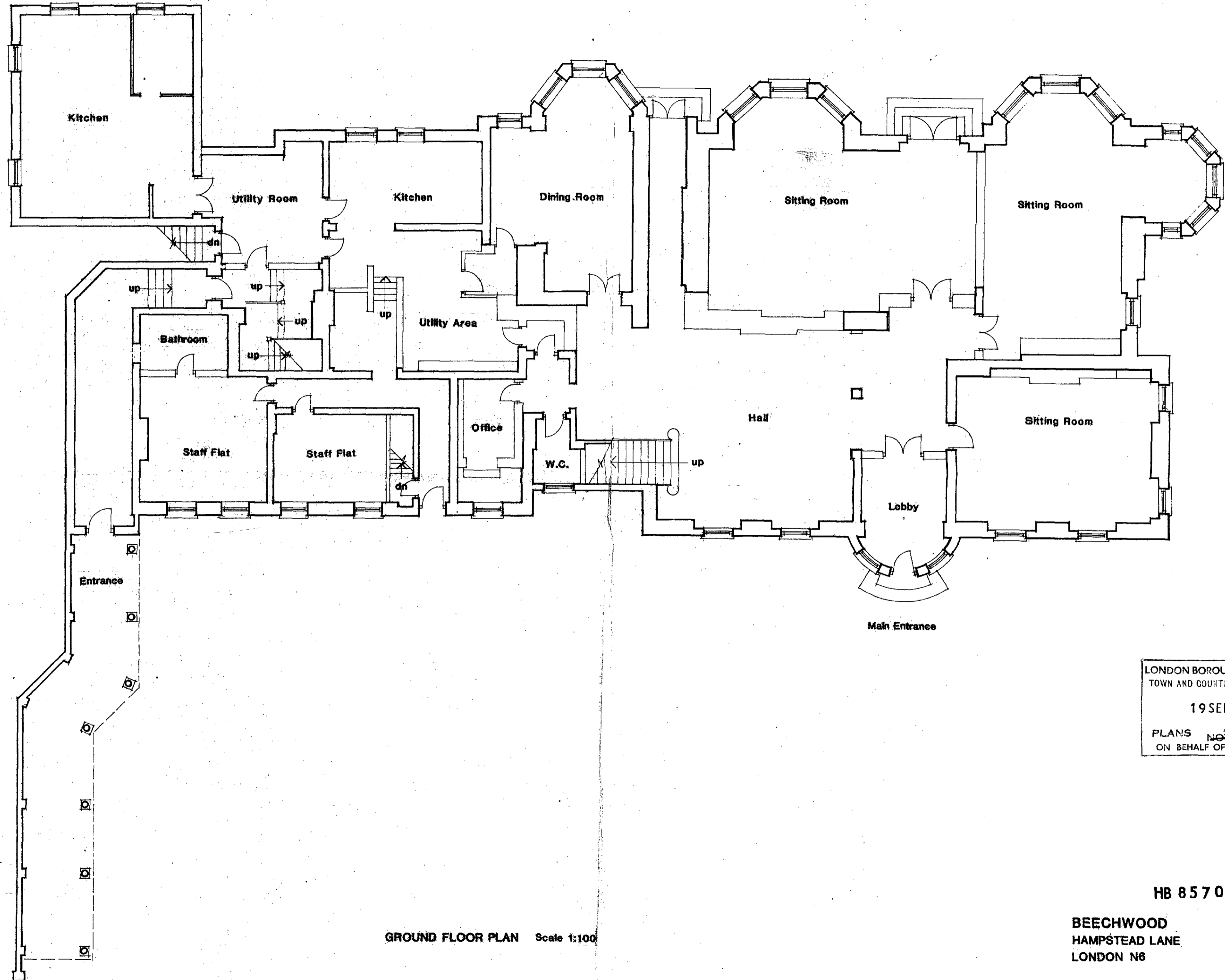


FIRST FLOOR PLAN Scale 1:100

LONDON BOROUGH OF CAMDEN
 TOWN AND COUNTRY PLANNING ACTS
 19 SEP 1985
 PLANS ~~NOT APPROVED~~ APPROVED
 ON BEHALF OF THE COUNCIL

HB 8570273

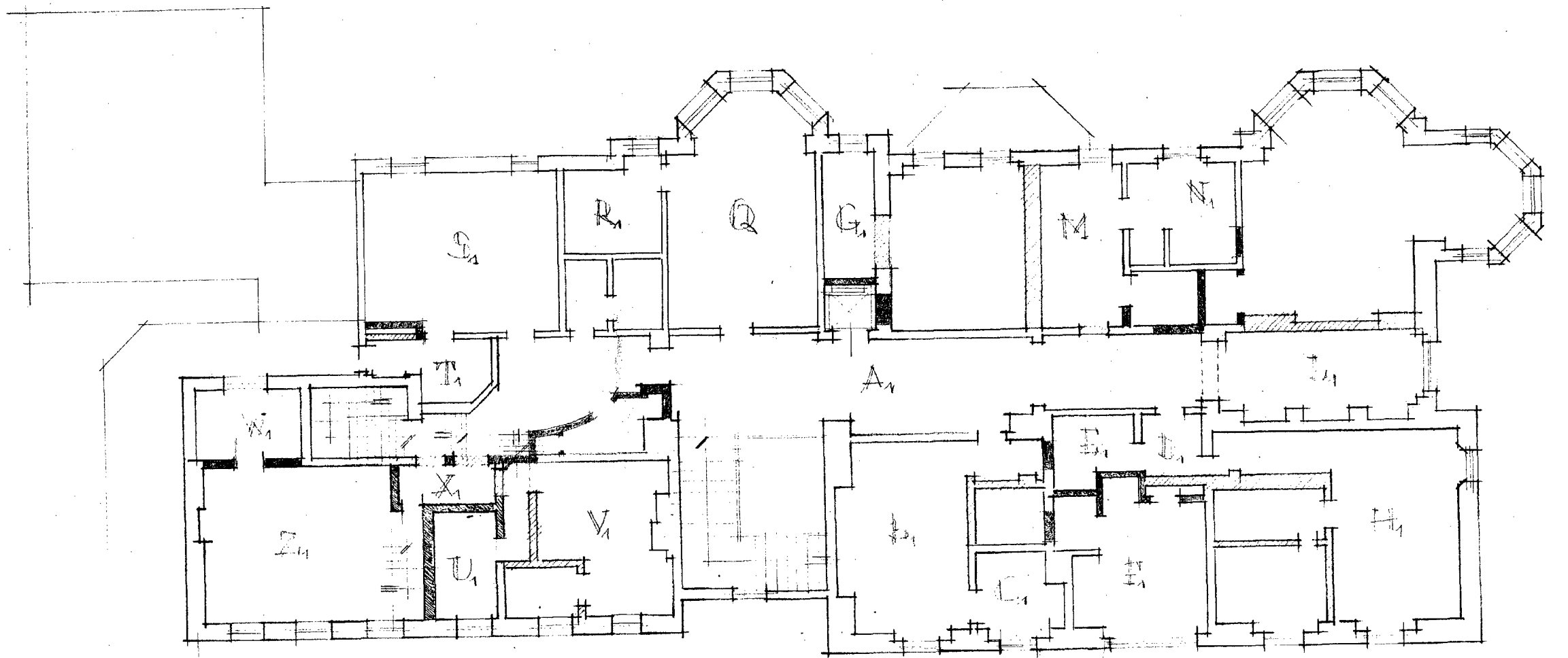
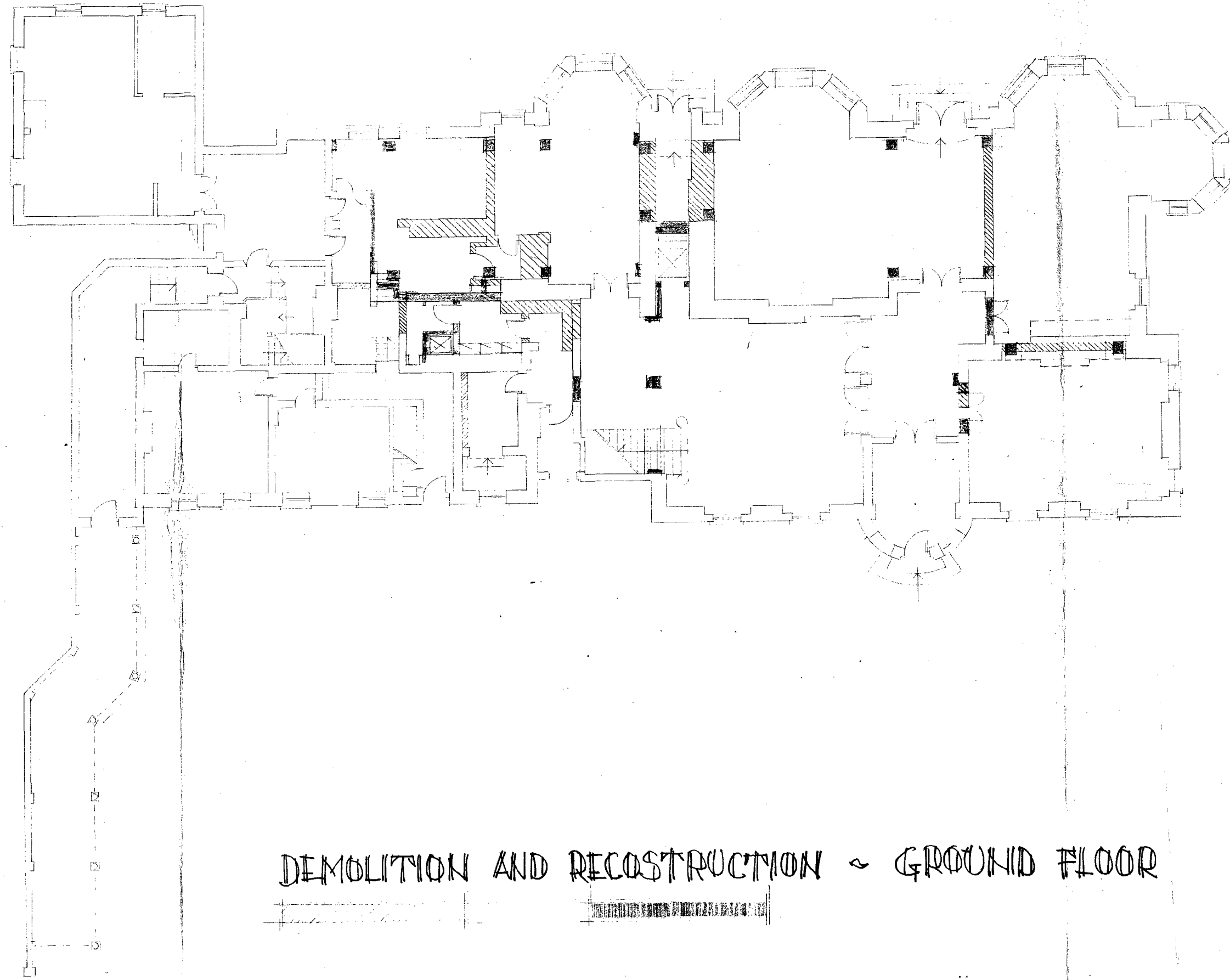
BEECHWOOD
 HAMPSTEAD LANE
 LONDON N6



GROUND FLOOR PLAN Scale 1:100

LONDON BOROUGH OF CAMDEN
 TOWN AND COUNTRY PLANNING ACT 1990
 19 SEP 1985
 PLANS ~~NOT APPROVED~~ APPROVED
 ON BEHALF OF THE COUNCIL

HB 8570273
 BEECHWOOD
 HAMPSTEAD LANE
 LONDON N6



DEMOLITION

RECONSTRUCTION

DEMOLITION AND RECONSTRUCTION ~ GROUND FLOOR

LONDON BOROUGH OF CAMDEN
TOWN AND COUNTRY PLANNING ACT
19 SEP 1985
PLANS APPROVED
ON BEHALF OF THE COUNCIL

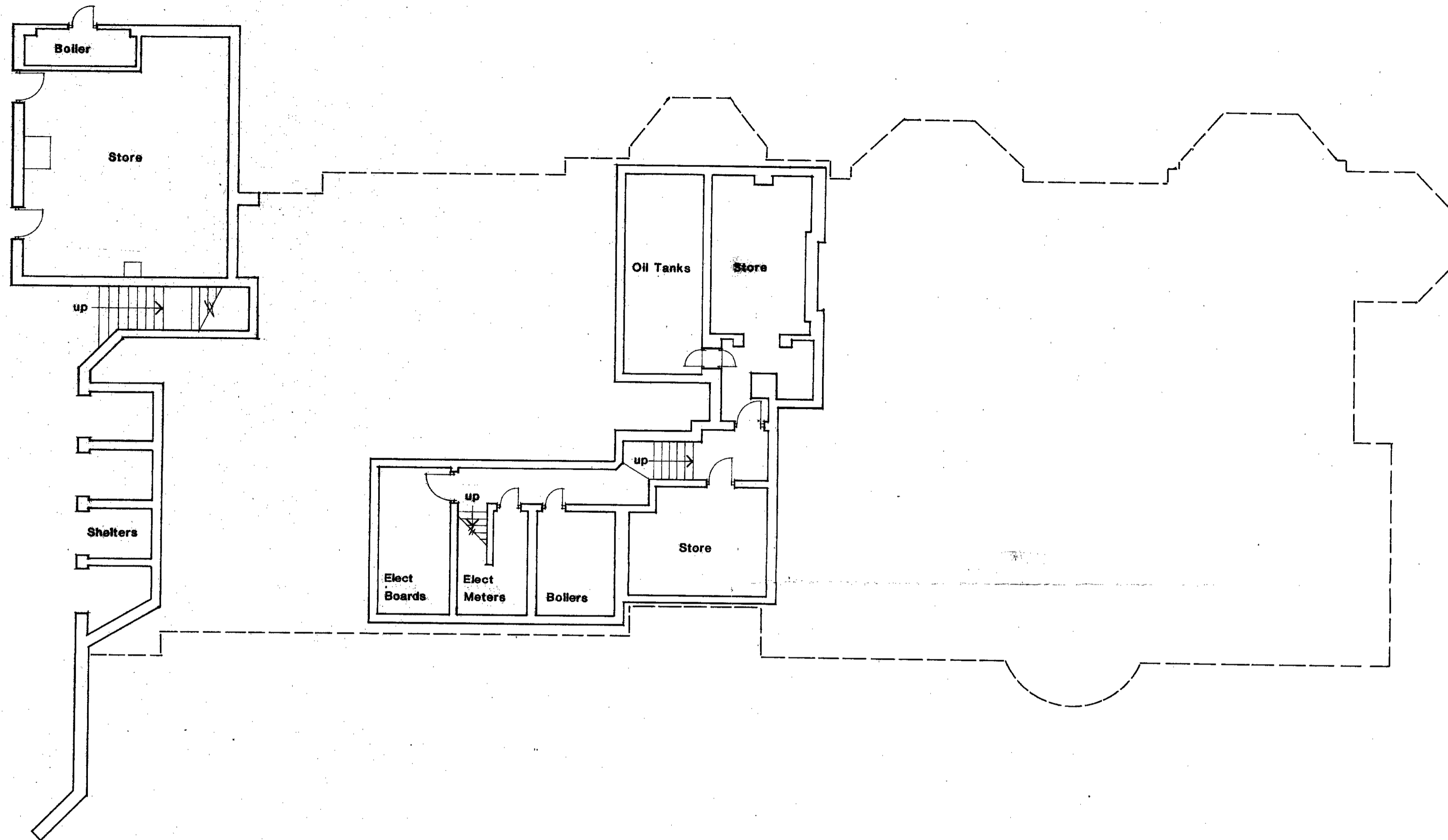
LONDON BOROUGH OF CAMDEN
PLANNING AND COMMUNICATIONS
DEPARTMENT
9 SEP 1985 (A.M.)
RECEIVED
REF TO:



'BEECHWOOD' HAMPSTEAD LANE - LONDON
DETAILS

SANDRINI BETTI - VIA CASSIA KM. 23, 500 - ROME - ITALY

HB 8570273



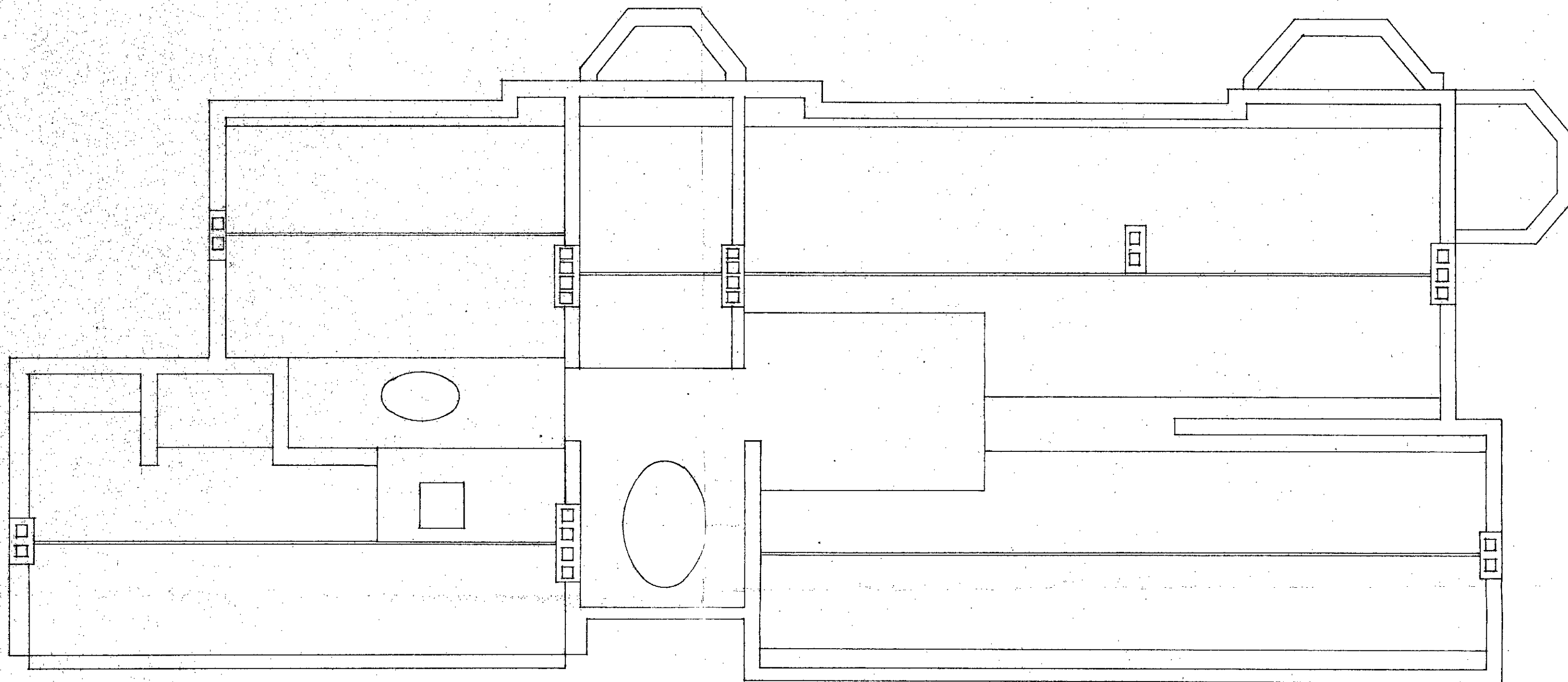
LONDON BOROUGH OF CAMDEN
 TOWN AND COUNTRY PLANNING ACTS
 19 SEP 1985
 PLANS ~~NOT APPROVED~~ APPROVED
 ON BEHALF OF THE COUNCIL

HB 8570273

BASEMENT PLAN

Scale 1:100

BEECHWOOD
 HAMPSTEAD LANE
 LONDON N6



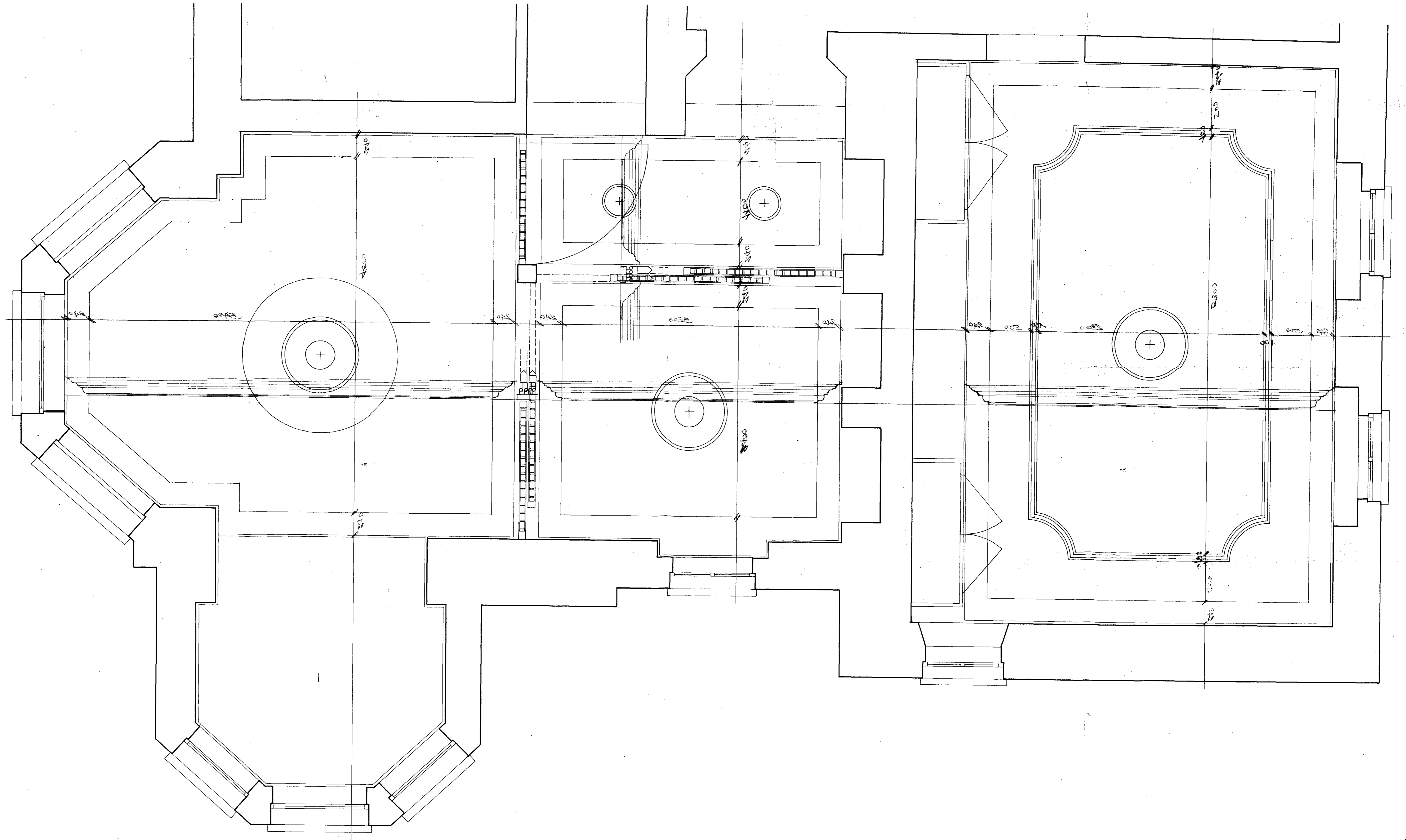
LONDON BOROUGH OF CAMDEN
TOWN AND COUNTRY PLANNING ACTS
19 SEP 1985
PLANS ~~NOT APPROVED~~ APPROVED
ON BEHALF OF THE COUNCIL

ROOF PLAN

Scale 1:100

HB 8570273

BEECHWOOD
HAMPSTEAD LANE
LONDON N6

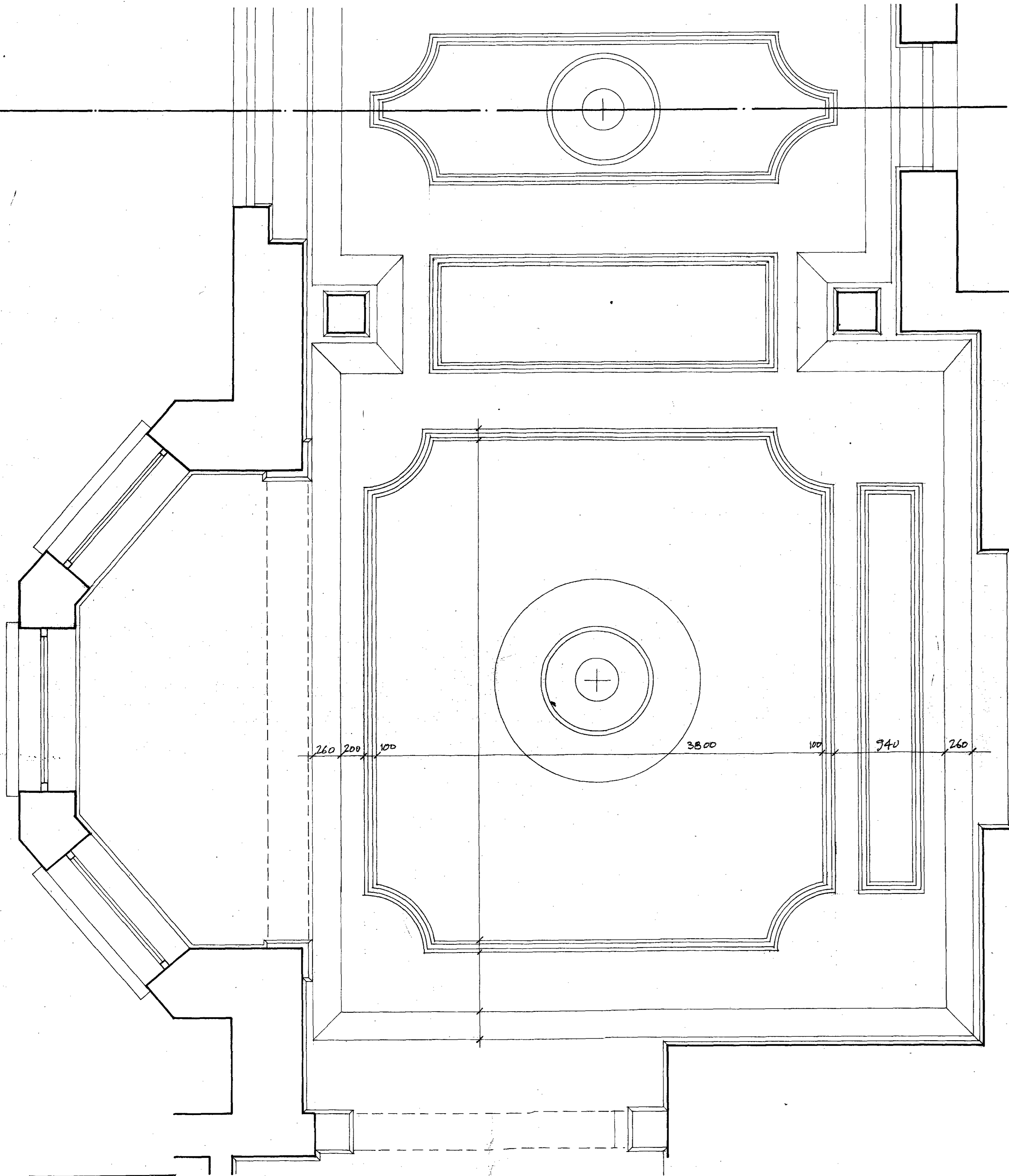


RECEIVED
 8 FEBRUARY 1971
 ARCHITECTURAL DIVISION
 U.S. DEPARTMENT OF COMMERCE

THOMAS BELL
 FIRST FLOOR
 DETAILS
 A-1:30
 DESIGNING

HB 8210512

CONTINUATION LINE



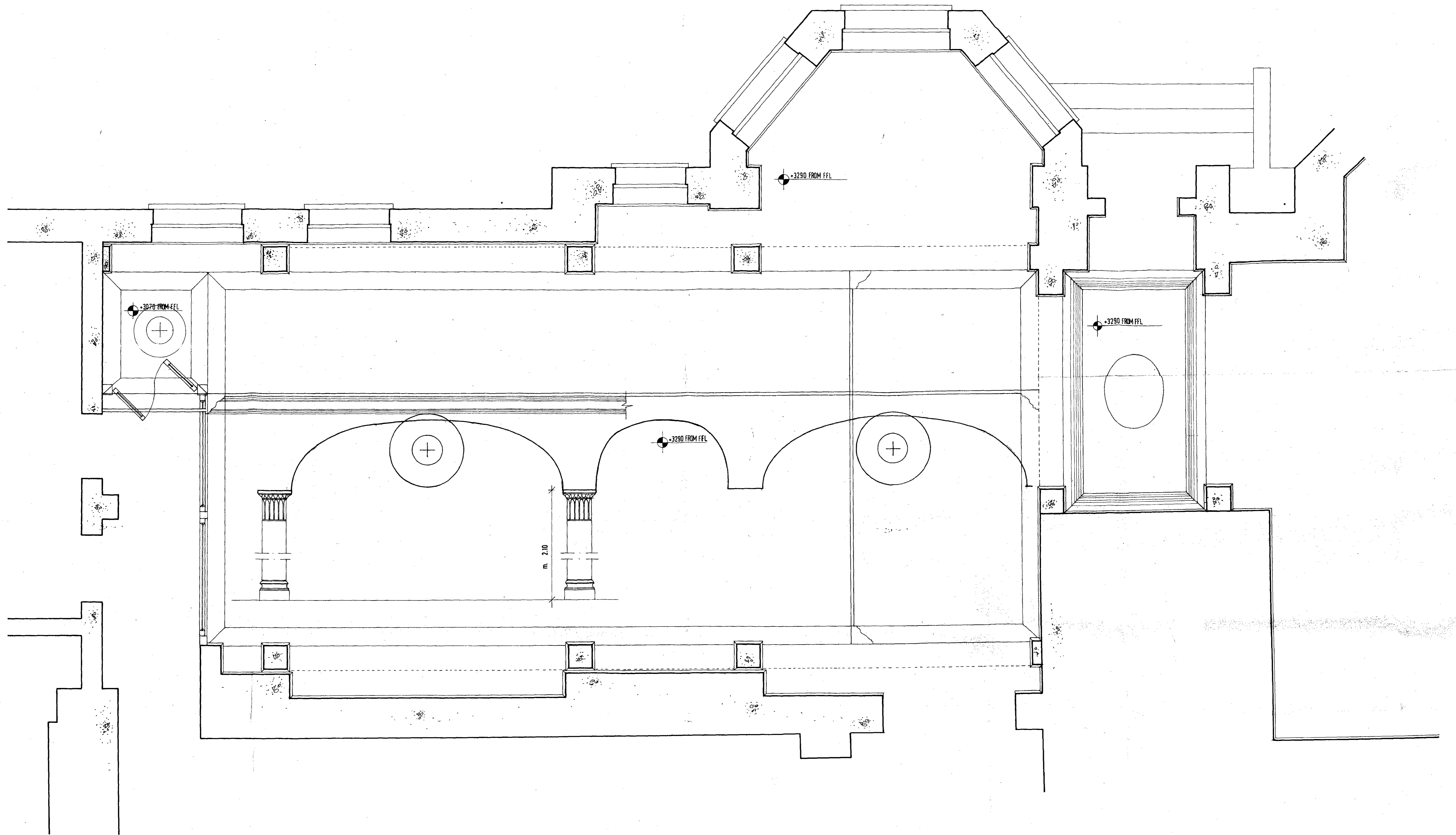
LONDON BOROUGH OF CAMDEN
TOWN AND COUNTRY PLANNING ACTS
19 SEPT 1985
PLANS APPROVED
ON BEHALF OF THE COUNCIL

LONDON BOROUGH OF CAMDEN
TOWN AND COUNTRY PLANNING ACTS
19 SEPT 1985
PLANS APPROVED
ON BEHALF OF THE COUNCIL

HB 8570273

CEILING DETAILS
GROUND FLOOR
1:20

LONDON BOROUGH OF CAMDEN
PLANNING AND COMMUNICATIONS
DEPARTMENT
9 SEPT 1985 (A.M.)
RECEIVED
REF. TO:



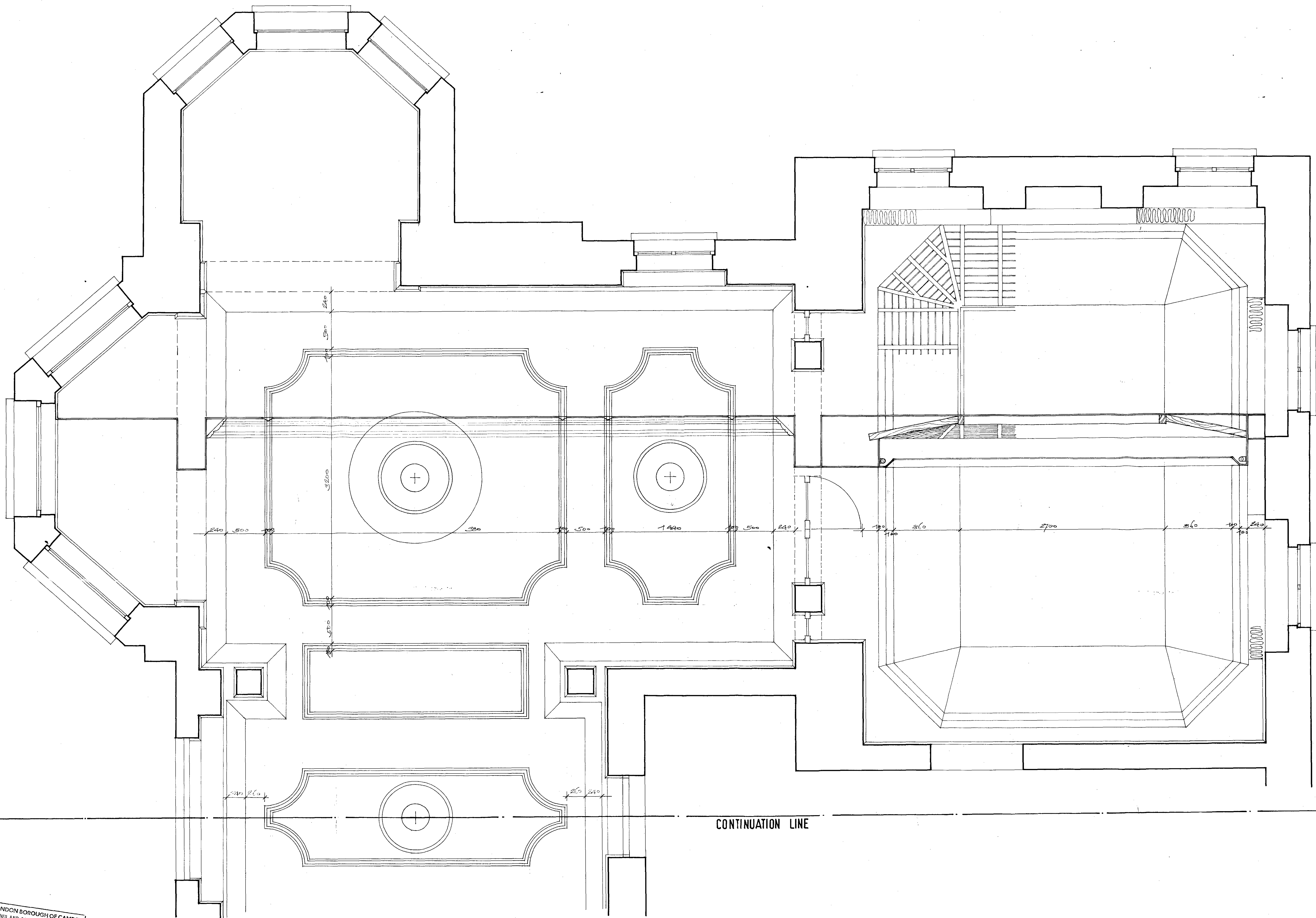
LONDON BOROUGH OF CAMDEN
 TOWN AND COUNTRY PLANNING ACTS
 19 SEPT 1985
 PLANS APPROVED
 ON BEHALF OF THE COUNCIL

HB 8570273

CEILING DETAILS
 GROUND FLOOR

LONDON BOROUGH OF CAMDEN
 PLANNING AND COMMUNICATIONS
 DEPARTMENT
 9 SEP 1985 (A.11)
 RECEIVED

A 1:20



LONDON BOROUGH OF CAMDEN
 TOWN AND COUNTRY PLANNING ACTS
 19 SEP 1985
 PLANS APPROVED
 NOT FORWARDED
 ON BEHALF OF THE COUNCIL

HB 8570273
 LONDON BOROUGH OF CAMDEN
 PLANNING AND COMMUNICATIONS
 DEPARTMENT
 9 SEP 1985 (A.M.)
 RECEIVED
 ACIR REF. TO

CEILING DETAILS
 A 1:20
 GROUND FLOOR