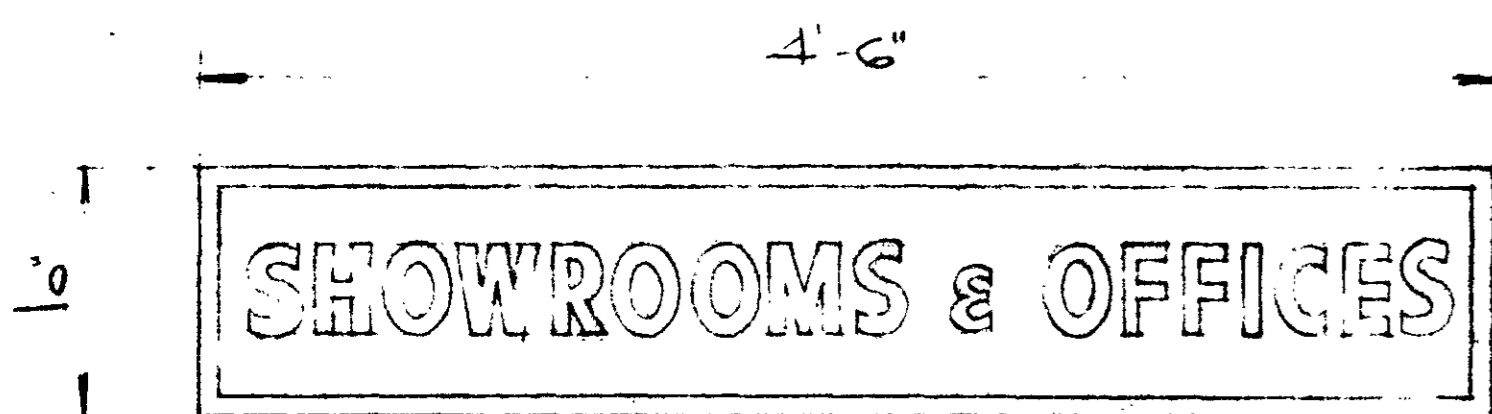


SIGN ABOVE LEFT HAND ENTRANCE DOORWAY

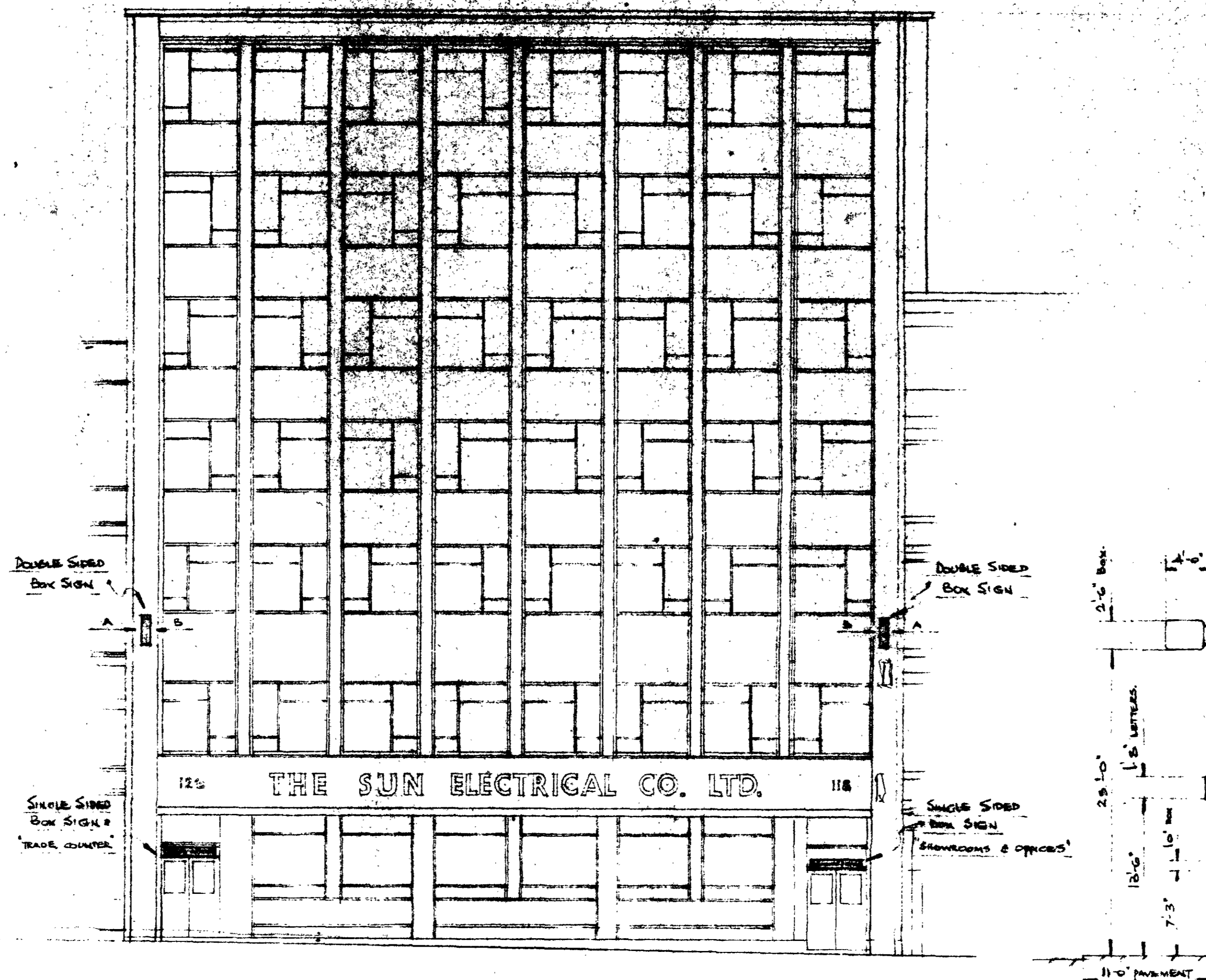


SIGN ABOVE RIGHT HAND ENTRANCE DOORWAY

ENLARGED DETAIL OF SINGLE SIDED BOX SIGNS ABOVE DOORWAYS.  
SCALE 1/2" = 1'-0"

SPECIFICATION - SINGLE SIDED BOX SIGNS.

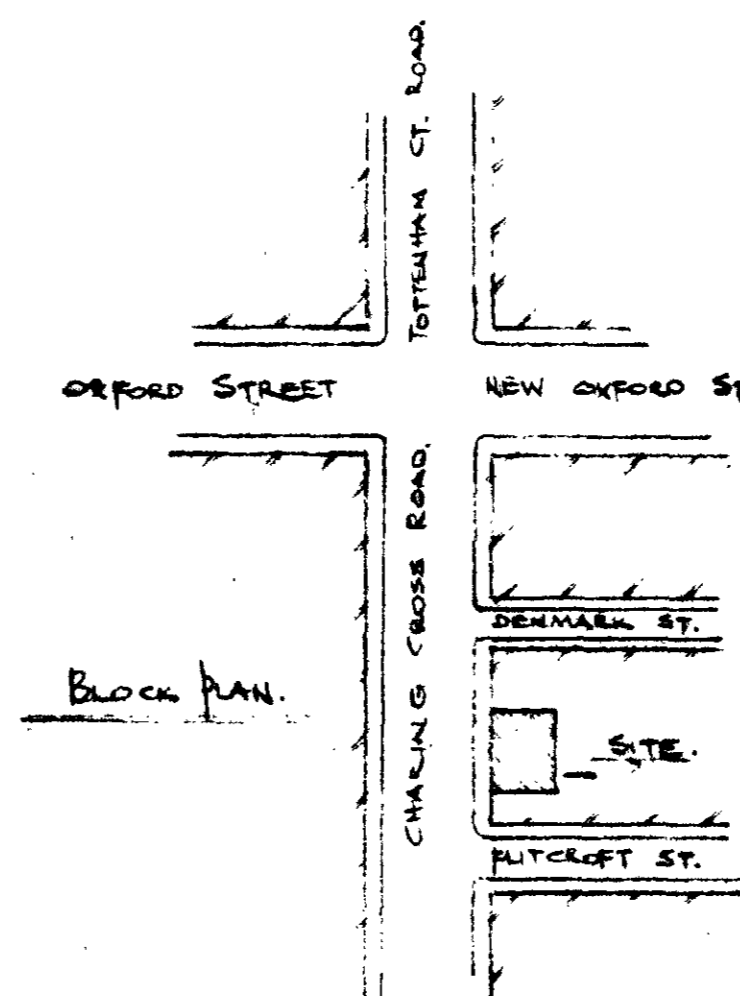
TO SUPPLY AND ERECT TWO SINGLE SIDED BOX SIGNS, EACH TO BE 4'-6" x 10" OVERALL. BOXES FITTED WITH GLASS PANEL, ONE TO READ "TRADE COUNTER" THE OTHER "SHOWROOMS & OFFICES". LETTERS TO BE IN GREEN ON A TRANSLUCENT WHITE BACKGROUND AND ILLUMINATED FROM INSIDE BY FLUORESCENT WHITE TUBES. ONE BOX TO BE MOUNTED ABOVE EACH ENTRANCE AS POSITIONED ON FRONT ELEVATION DRAWING.



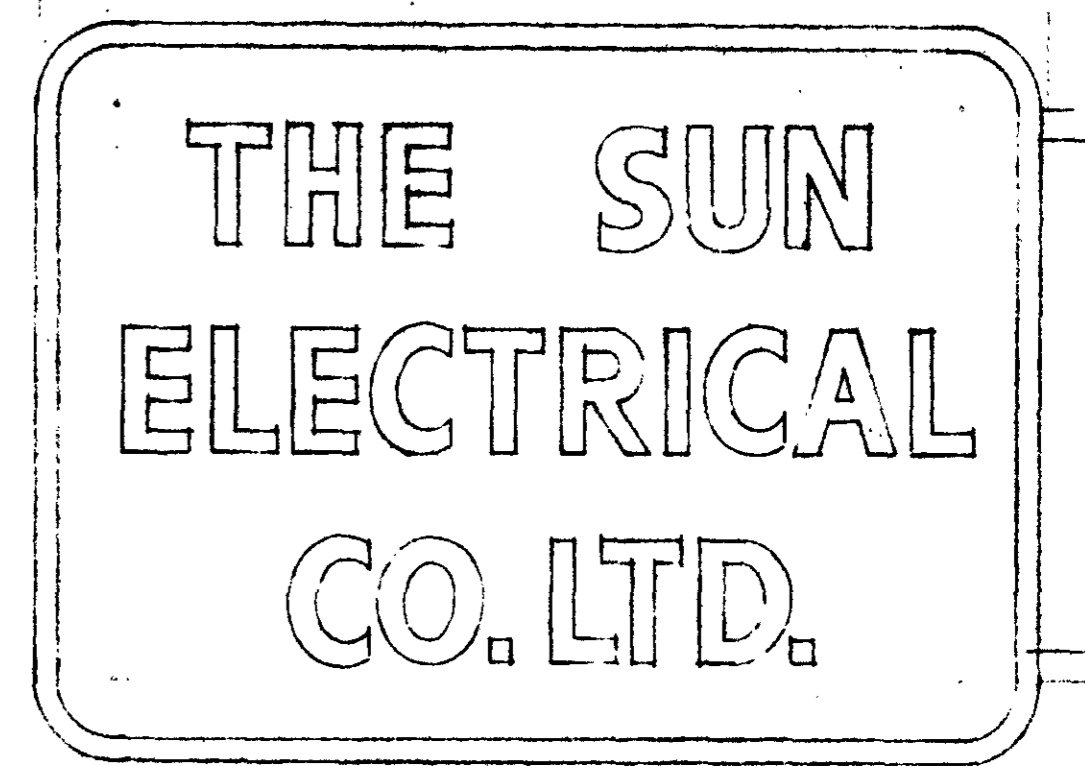
FRONT ELEVATION OF BUILDING SHOWING POSITIONS OF BOX & FACIA SIGNS.  
SCALE 1/8" = 1'-0"

SPECIFICATION - FACIA SIGN.

TO SUPPLY AND ERECT A SET OF PERSPEX FRONTED, METAL LETTERS TO READ, IN PLAIN BLOCK CHARACTERS:-  
"125 THE SUN ELECTRICAL CO. LTD 118"  
LETTERS TO BE 20" HIGH AND THE NUMERALS 10" HIGH. THE FINISH FITTED WITH 1/8" THICK OPAL WHITE PERSPEX AND INTERNALLY SINGLE LINE OF TUBING TO BURN FLUORESCENT LIME GREEN



VIEW IN DIRECTION OF ARROWS 'A'



VIEW IN DIRECTION OF ARROWS 'B'

ENLARGED DETAIL OF DOUBLE SIDED BOX SIGNS.  
SCALE 1/2" = 1'-0"

SPECIFICATION - DOUBLE SIDED BOX SIGNS.

TO SUPPLY AND ERECT TWO DOUBLE SIDED BOX SIGNS, THESE TO BE 3'-6" x 2'-0" OVERALL. BOXES GLAZED BOTH SIDES WITH PROCESSED GLASS PANELS, ONE SIDE TO READ "THE SUN ELECTRICAL CO. LTD." AND THE OTHER TO BEAR THE "SUNCO" TRADE MARK. BOTH TRADE MARK & LETTERS TO BE IN GREEN ON WHITE BACK GROUND. BOX FINISHED GREEN AND FITTED INSIDE WITH FLUORESCENT WHITE TUBES. (NOTE - THE TRADE MARK AND TEXT WILL BE SEEN FROM BOTH DIRECTIONS - SEE ARROWS A & B ABOVE.)

DRAWING NO. 4888 DATE 4. 3. 37	THE SUN ELECTRICAL CO. LTD., 118-120, CHALING CROSS ROAD, LONDON W.C.2. AS ABOVE.	PERMISSION APPLICATION DRAWING NUMBER 4888
-----------------------------------	---	--