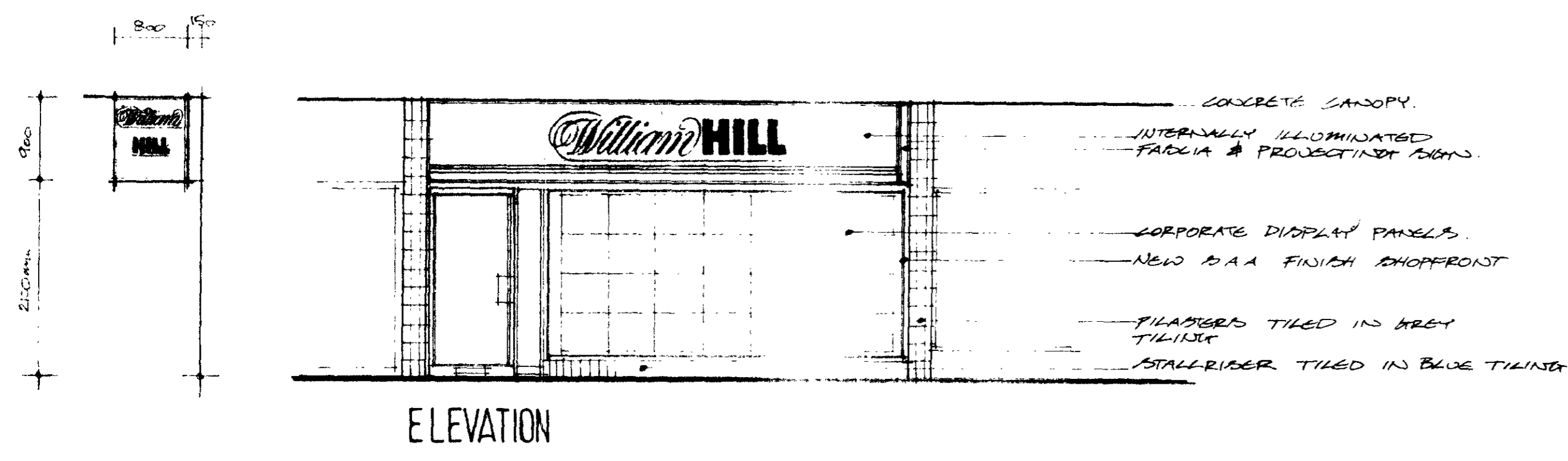
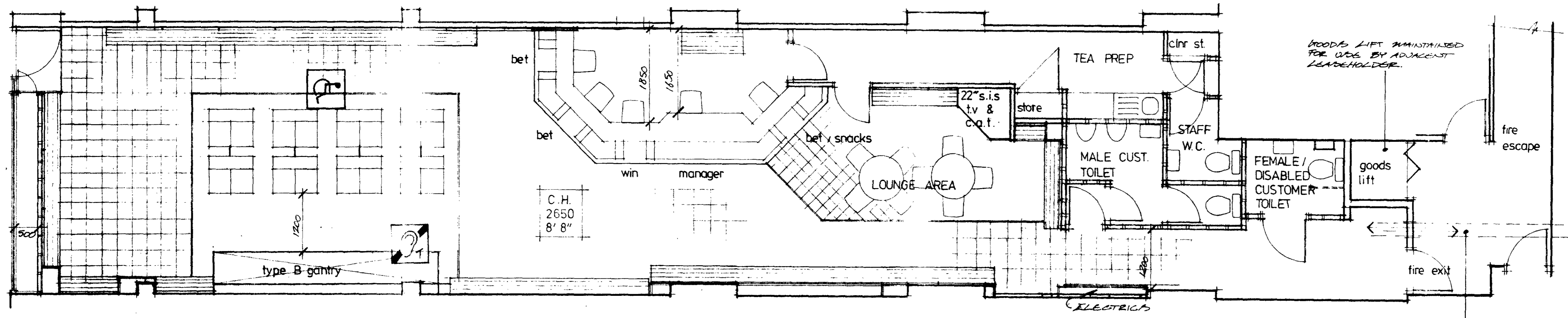


SITE PLAN 1:250

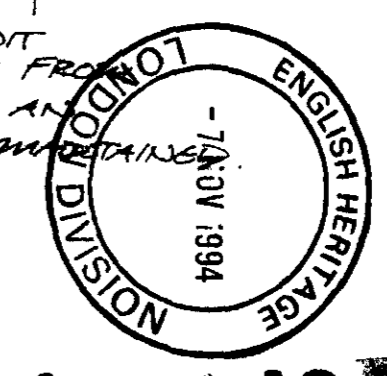
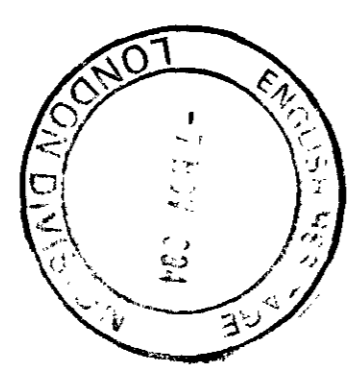


ELEVATION



PLAN

GROSS UNIT AREA: 1553 FT<sup>2</sup> (EXCLUDES LOBBY AND A LIFT BEYOND FIRE ESCAPE DOOR)  
 GROSS CUSTOMER AREA: 1130 SQ. FT.  
 NETT. CUSTOMER AREA: 794 SQ. FT.



9400140

LONDON BOROUGH OF CAMDEN  
 TOWN AND COUNTRY PLANNING ACTS  
 12 OCT 1994  
 PLANS APPROVED  
 ON BEHALF OF THE COUNCIL

REV: A: 3  
 20 JUNE 1994  
 CHAIRMAN MOVED 1/2 BAY  
 TOWARDS COUNTER  
 CHAIRMAN REDRAWN  
 FORWARD - INST. COST AREA  
 REVISED

**LEGEND**

- RIND INDUCTION LOOP FACILITY
- WHEELCHAIR POSITION

UNIT 3 BRUNSWICK CENTRE  
 LONDON W.C.1  
 18 DEC 1994  
 DIRECTED TO

**William HILL**  
 ORGANIZATION Ltd

PO Box 146, 15 Mark Lane, Leeds, LS1 8LB  
 Telephone: 0532 448122  
 Greenside House, 50 Station Road,  
 Wood Green, London, N22 4TP  
 Telephone: 081 888 3181  
 5 Clifton House, Clifton Terrace, Finsbury Park,  
 London, N4 3JP  
 Telephone: 071 283 0800  
 10-13 Rushworth Street, London, SE1 0RB  
 Telephone: 071 929 0800  
 Bridge House, 47-55 Bridge Street, Walsall, WS1 1JQ  
 Telephone: 0922 28212  
 9-15 North Drive, off St.ENOAH'S SQUARE,  
 Glasgow, G1 4BL  
 Telephone: 041 284 0900

Site:	UNIT 3 BRUNSWICK CENTRE LONDON W.C.1		
Description:	PLAN AND ELEVATION AS PROPOSED		
Date:	JUNE 94	Scale:	1:50
Drawn:	J.M.	Revised:	
Drawing Number:	APRO/LN/RS/520138/07.1		