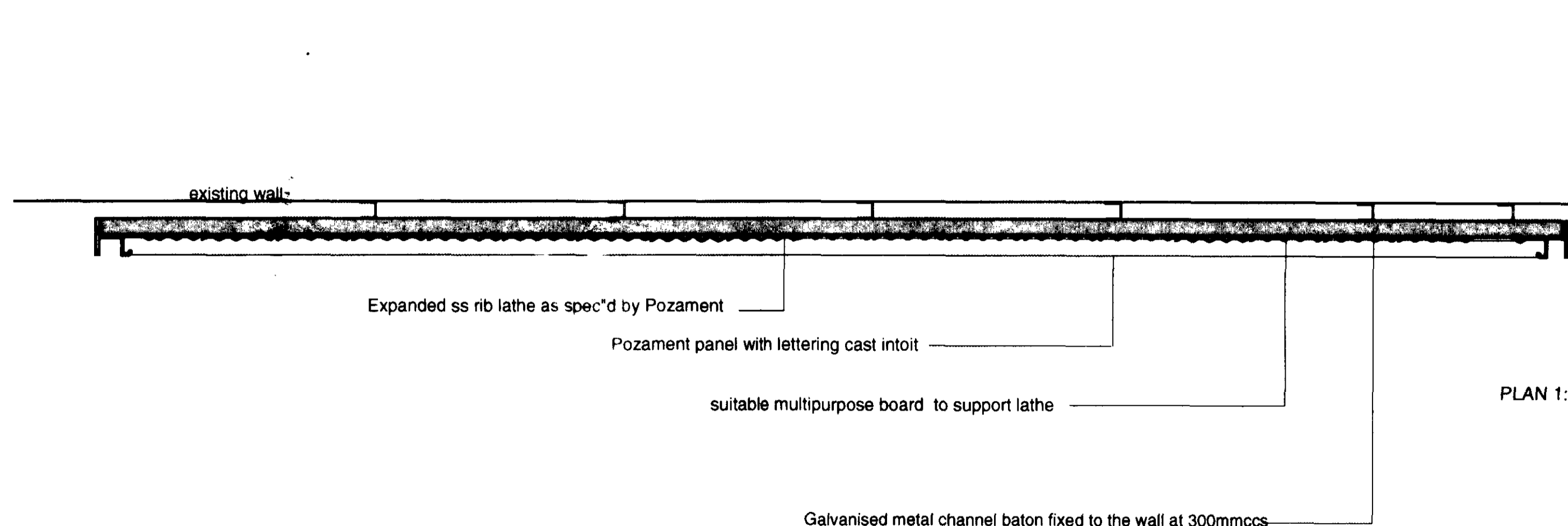


CORPORATE TYPEFACE TO BE KEPT & LAID OUT AS SHOWN. WHITFIELD STREET to be cast into the face of the Pozament panel. The lettering when scaled up should be 100mm width x 1800mm height. (The "F" is approx. 300mm width.)

"Recording Studio" to be 16swg stainless steel plate with raised polished letters and sandblasted background

ELEVATION 1:10

Pozament Duracote panel



EXPAMET STOP BEAD 19mm depth. REF 546

Angle section to create 20mm shadow gap

EXISTING TILED WALL SURFACE

GROUND LEVEL

SAA flat bar fixed to angle

20mm shadow gap using SAA angle

spacer screws on fixing between board & wall

19mm pozament DURACOTE

Suitable ss expanded rib lathe as spec'd by Pozament.

Letters cast int DURACOTE during 3rd layer application providing min.10mm recess

RHS or channel section galvanised metal batons bolted to the wall to provide rigidity to the board

Suitable external multipurpose board

SECTION OF SIGNAGE scale 1:1

CA/9580001

LONDON BOROUGH OF CROYDON
TOWN AND COUNTRY PLANNING ACTS
17 FEB 1995
PLANS APPROVED
ON BEHALF OF THE COUNCIL

NOTES

REVISIONS

Whitfield Street Recording Studio

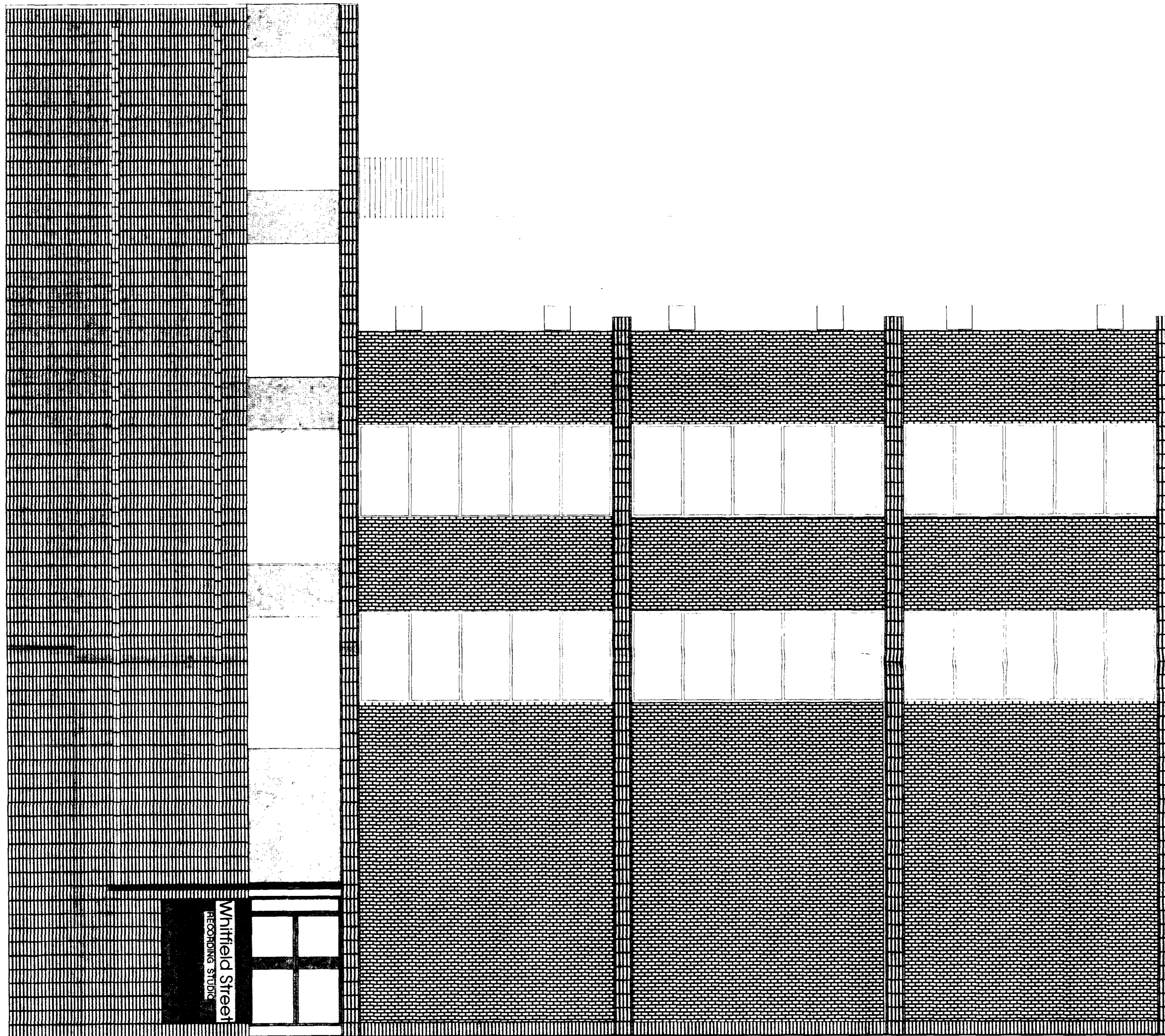
FRONT SIGNAGE REV A

DATE: OCTOBER 94 DRAWING NO: HM/ 429/00/13

SCALE: 1:5

ALL DIMENSIONS TO BE CHECKED ON SITE. DO NOT SCALE. THIS DRAWING IS COPYRIGHT

3 6 3 7
CHARTERHOUSE
S Q U A R E
L O N D O N EC1M
TEL 071 600 5151
FAX 071 600 1092
ARCHITECTS
& DESIGNERS



Whitfield Street
RECORDING STUDIO

NOTES

REVISIONS

WHITFIELD STREET STUDIOS
Proposed Street Elevation
DATE: September 94 DRAWING: 429/00/11

SCALE 1:50

6 3 7
CHARTERHOUSE
S O U A R E
L O N D O N EC1M
TEL 071 600 5151
FAX 071 600 1092
**ARCHITECTS
& DESIGNERS**

LONDON BOROUGH OF CAMDEN
TOWN AND COUNTRY PLANNING ACT
17 FEB 1995
PLANS APPROVED
ON BEHALF OF THE COUNCIL

CA/9580001