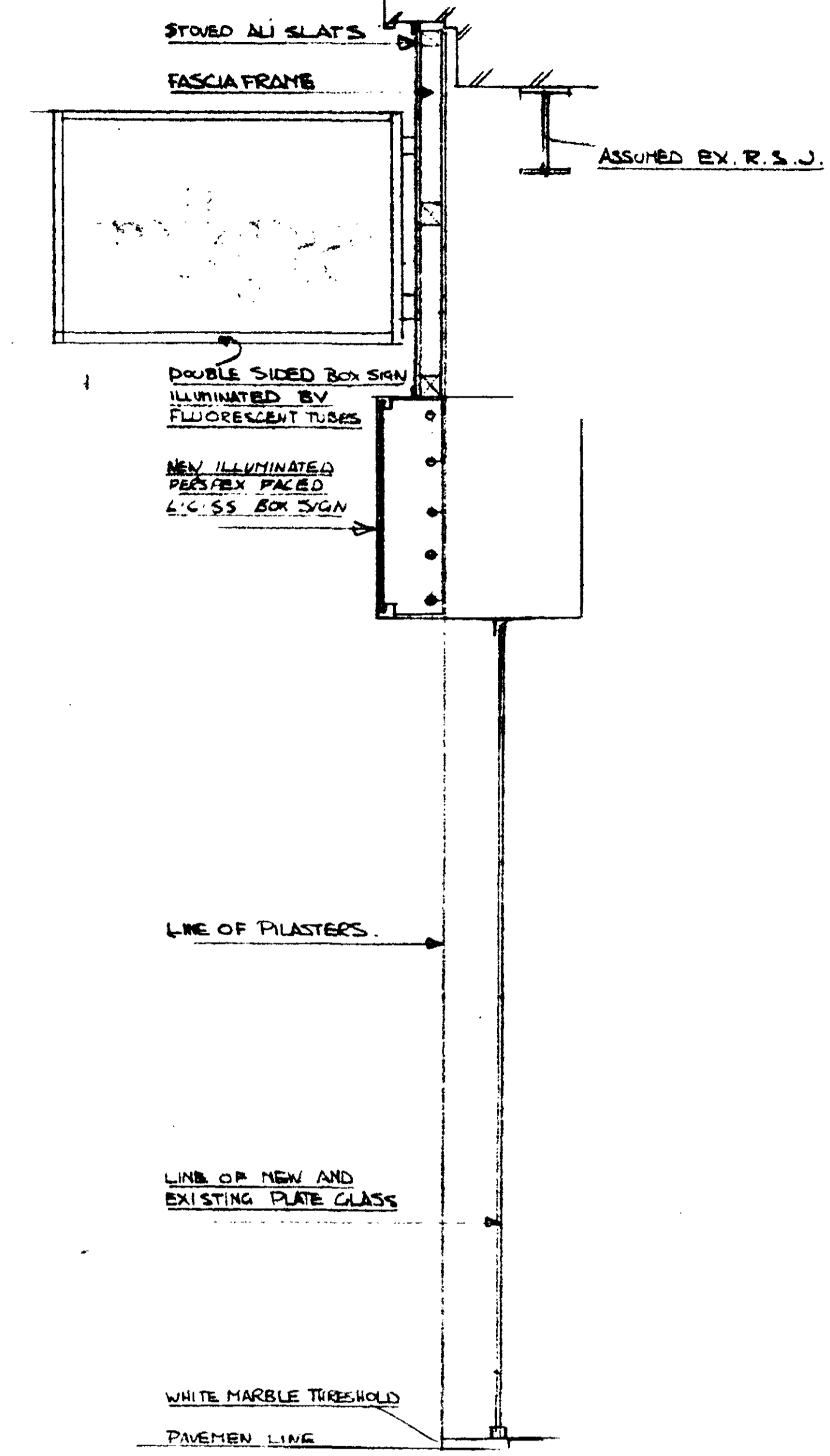
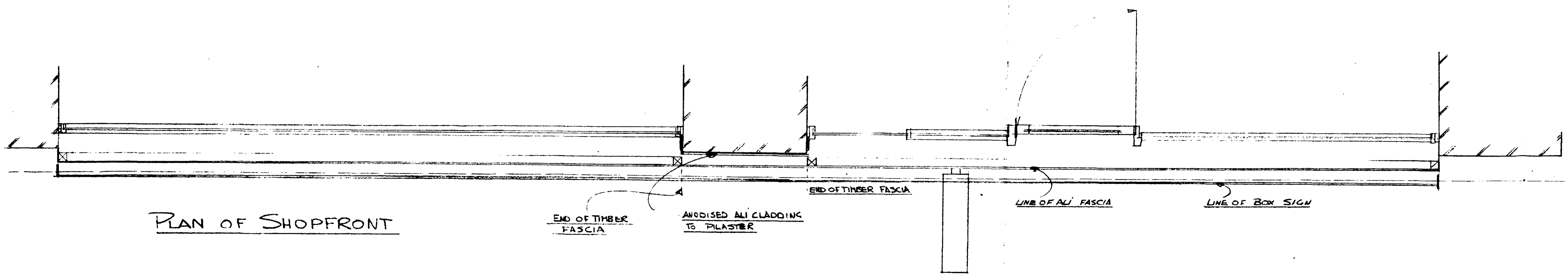


ELEVATION OF PROPOSED SHOPFRONT



SECTION



PLAN OF SHOPFRONT

PROPOSED ALTERATIONS AND NEW SHOPFRONT
 RE BROOK GREEN 17 NORTHWAYS PARADE NW.3

LONDON BOROUGH OF CAMDEN
 PRESENTED TO THE PLANNING AND
 DEVELOPMENT COMMITTEE APPLICATIONS
 SUB-COMMITTEE ON 19 JAN 1966

CA/339, 1

THAMES SHOPPITERS LTD
 46, LOWER RICHMOND RD
 PUTNEY SW15
 TEL. GIBBON 1288

SCALE 1" = 1'-0"