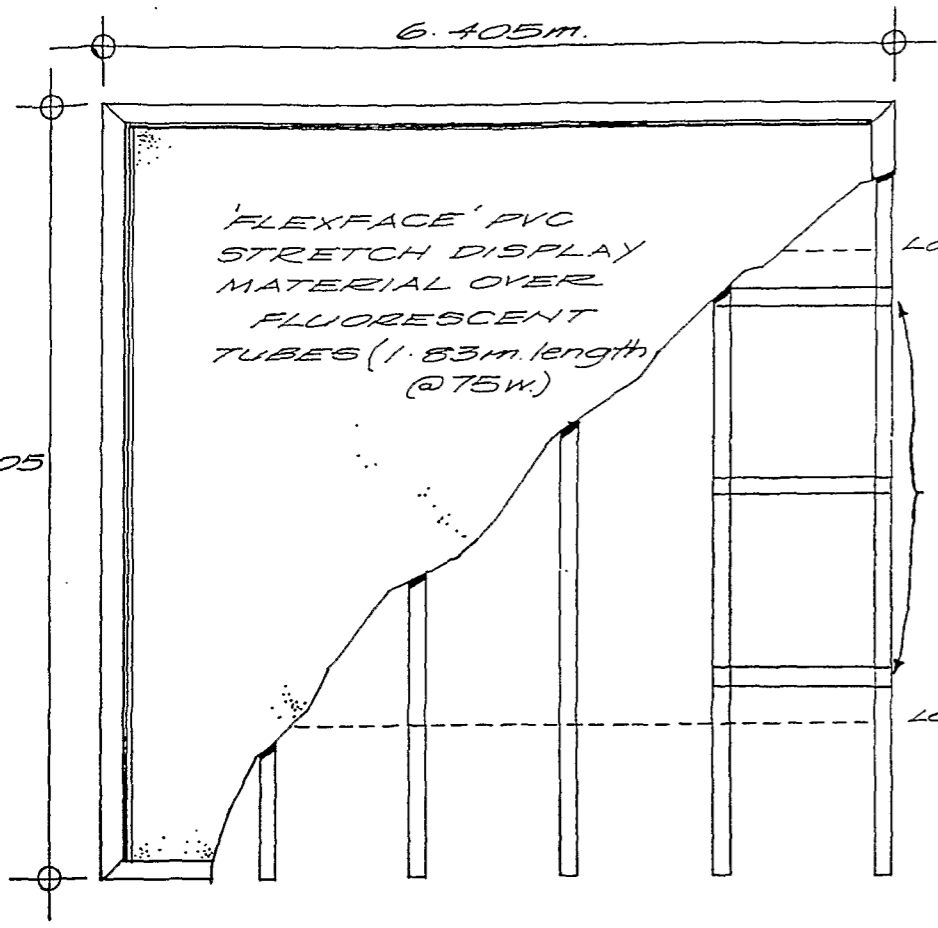
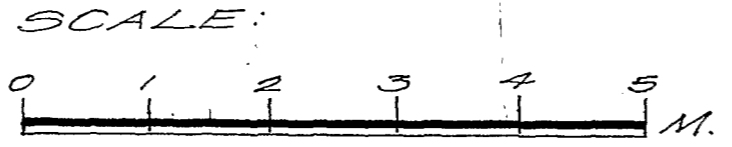


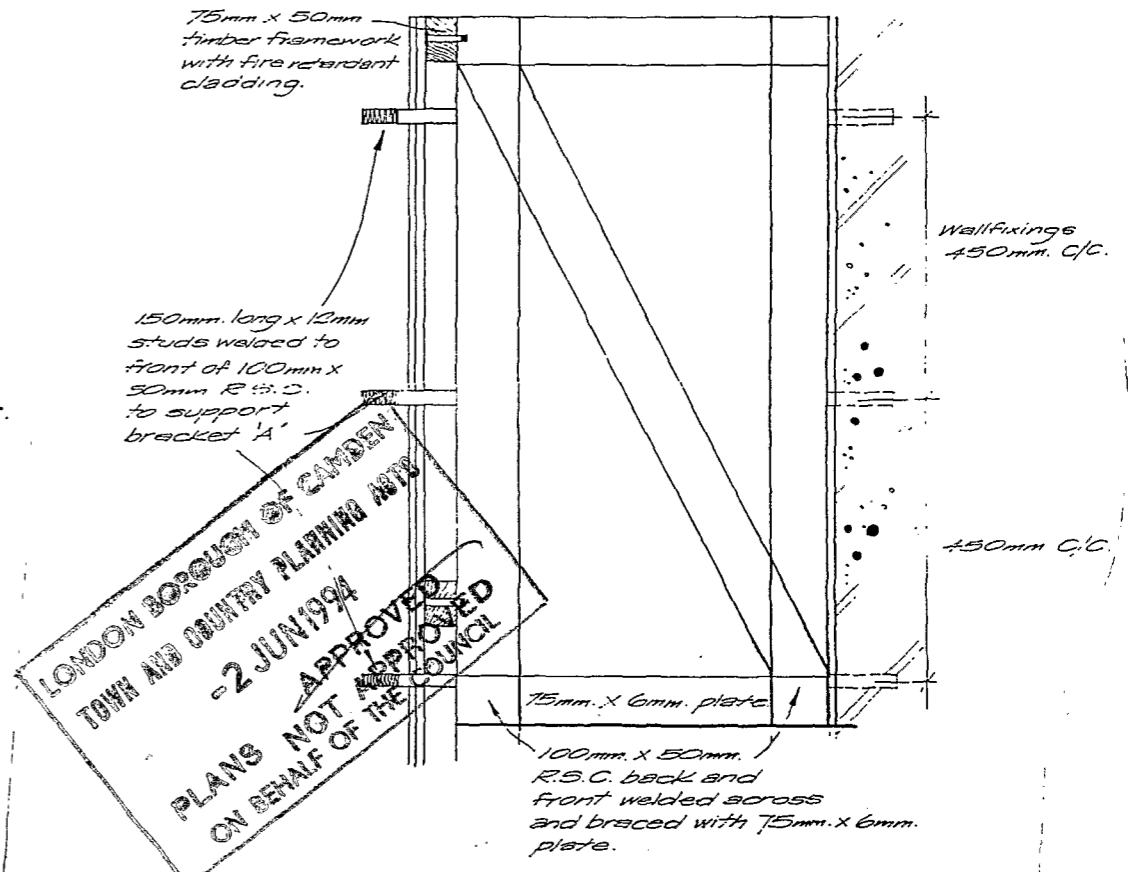
A/9380118



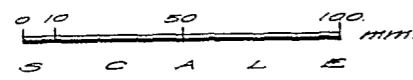
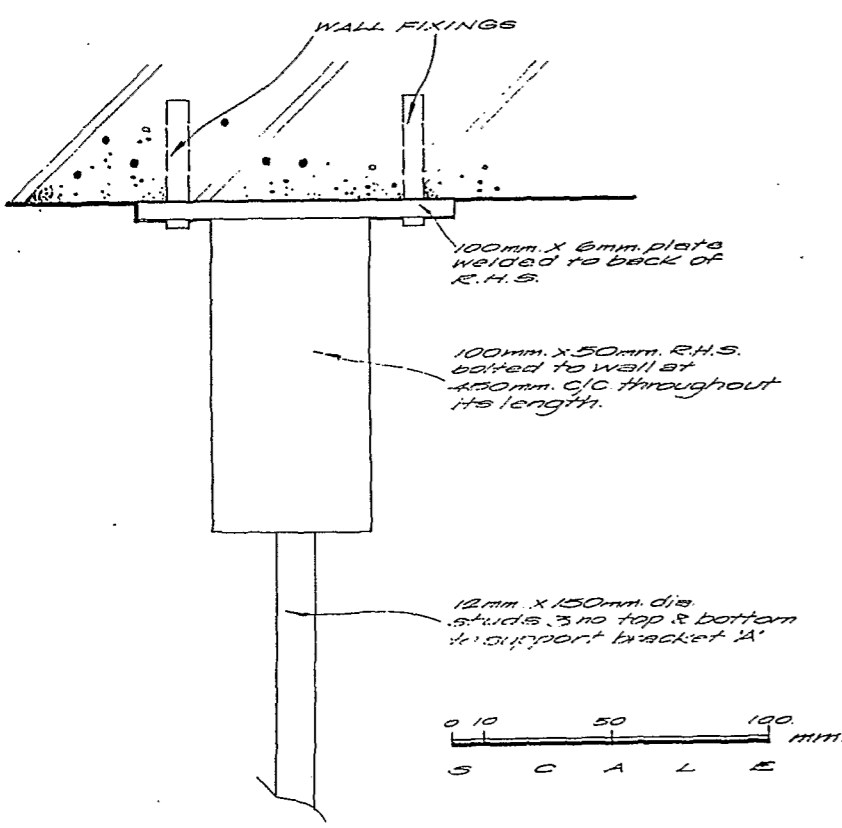
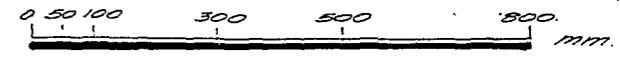
POSITION OF SIDE BRACKETS PREFABRICATED AS BRACKET 'A' EXCEPT FOR STUD HOLE POSITIONS.



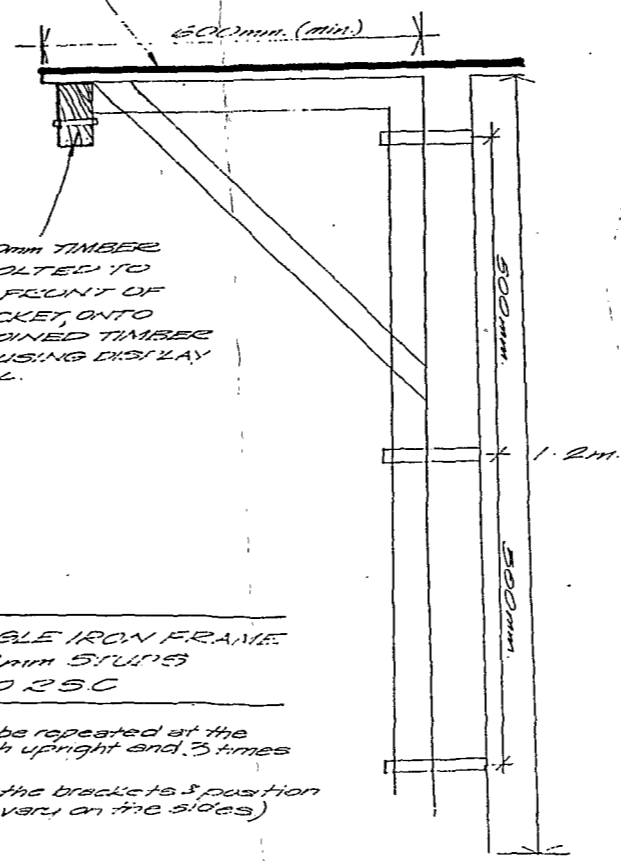
6 no. 100x50mm. R.H.S UPRIGHTS AT 1.26m. C/C. BOLTED TO WALL AT 450mm. C/C. THROUGHOUT THEIR LENGTH (SEE 1 FOR BREAST FIXING & 2. FOR RECESS FIXING METHOD).



LONDON BOROUGH OF CAMDEN
TOWN AND COUNTRY PLANNING AUTHORITY
2 JUN 1994
APPROVED
PLANS NOT APPROVED
ON BEHALF OF THE COUNCIL



12mm. Plywood Cladding fixed to top, sides & bottom of box. Top to be covered with 2 layers of felt.



100mm x 50mm TIMBER FRAME BOLTED TO PLATE AT FRONT OF EACH BRACKET, ONTO WHICH IS JOINED TIMBER FRAME HOUSING DISPLAY MATERIAL.

50x50mm ANGLE IRON FRAME FIXED TO 12mm STUDS WELDED TO R.S.C.

This section to be repeated at the bottom of each upright end, 3 times on each side (The length of the brackets & position of studs will vary on the sides)

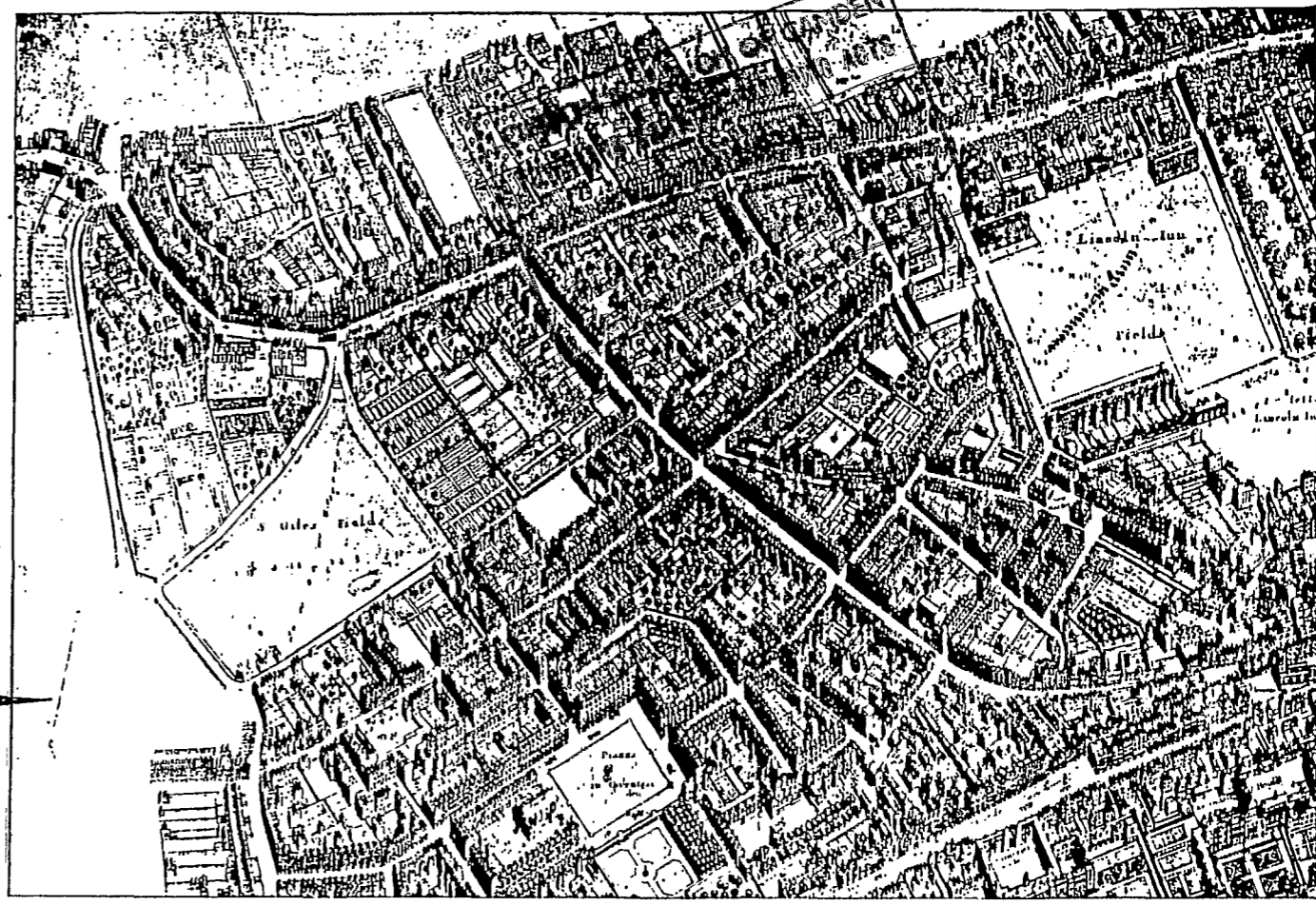
ALLIED

OUTDOOR ADVERTISING LTD

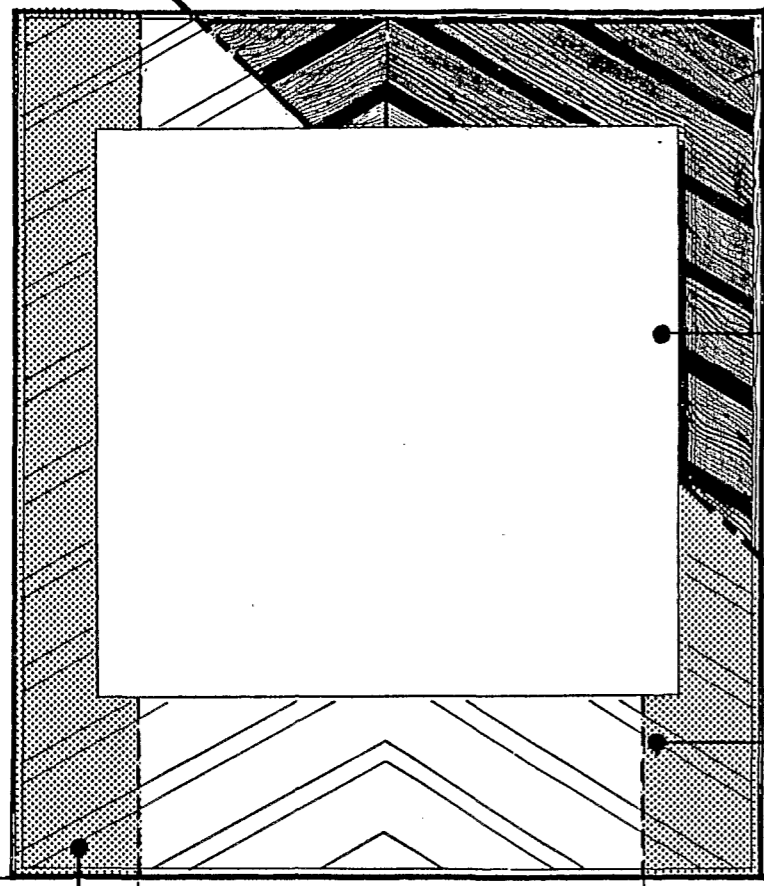
9380118

Scale As Indicated.		
Date JULY 1993		
Drawing No: PL	157	93 'D'

A/9380118



CHEVRON STYLE
FACADE PAINTED BLACK.
(Surmounted on black background.)



INFORMATION SIGN
2.5m x 2.5m.

Example

EXISTING BUTTRESS

3.65
m.

Neighbourhood of St. Giles-in-the-Field circa 1658

Originally a village separated from London and Westminster by broad fields. The ancient church of St. Giles, being traceable to the chapel of a hospital for lepers founded about 1117 by Queen Matilda which was taken down in 1623 and a brick edifice was erected in its place.

By this time St. Giles, still in the fields, was spoken of as a town. In 1605 an Act was passed for paving the "town of St. Giles". The preamble runs "St. Giles-in-the-Fields, towards the Strand and towards New Inn is of late years by occasion of the continual rode there, and of carriages become deep, foul and dangerous to all that pass those ways."

ALLIED

OUTDOOR ADVERTISING LTD

Allied House, Aberavon Road, London E3 5AR
Tel: 081 981 3788 Fax: 081 983 0096

9380118

ROUCH OF CAMDEN
PLANNING AUTHORITY

2 June 94

NOT APPROVED

Scale N/A

Date JULY 1993

Drawing No: FL 157 93.A