

Existing fascia sign length approx. 12,000mm long

# The Conservatory

## FASCIA SIGN 1:5

Existing fascia sign to be removed after removal of the existing 'Cafe Munchen' built up letters.  
Fix new fascia sign to the underside of the fascia with 25mm returns in black or silver of letter faces.  
Background color to fascia to be specified with any fascia mould in blue to match the existing fascia.  
Lettering to be in gold leaf with black edges to leaf pattern or similar on non-leaf pattern as shown.  
New 'The Conservatory' letters to be max. 900mm high.



The fascia sign is to be mounted on the underside of the fascia with 25mm returns in black or silver of letter faces.  
Lettering to be in gold leaf with black edges to leaf pattern or similar on non-leaf pattern as shown.  
New 'The Conservatory' letters to be max. 900mm high.

## FRONT CANOPY ELEVATION 1:20

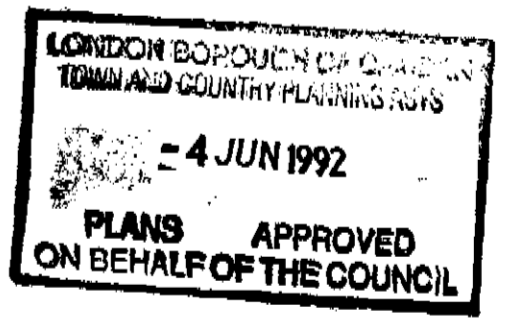
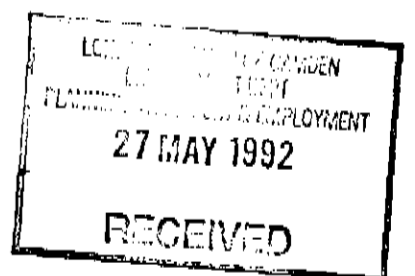
Position of new fascia sign as detailed elsewhere.

The two canopy positions are to be retained and the canopies are to be RECOVERED - DARK BLUE.  
Position of new front canopy and signage as detailed elsewhere.  
Dotted line indicates the run of new paint to be fixed to the underside of the canopy as shown - ALL SURFACES GLAZED OVER.  
Where shown dotted, remove any individual gold leaf 'CAFE-BAR' lettering and refer elsewhere as specified.

Remove the two decorative column lights (small lamps) and replace with two modern square glass decorative globe light fittings with black finished metalwork.  
BY MAIN CONTRACTOR

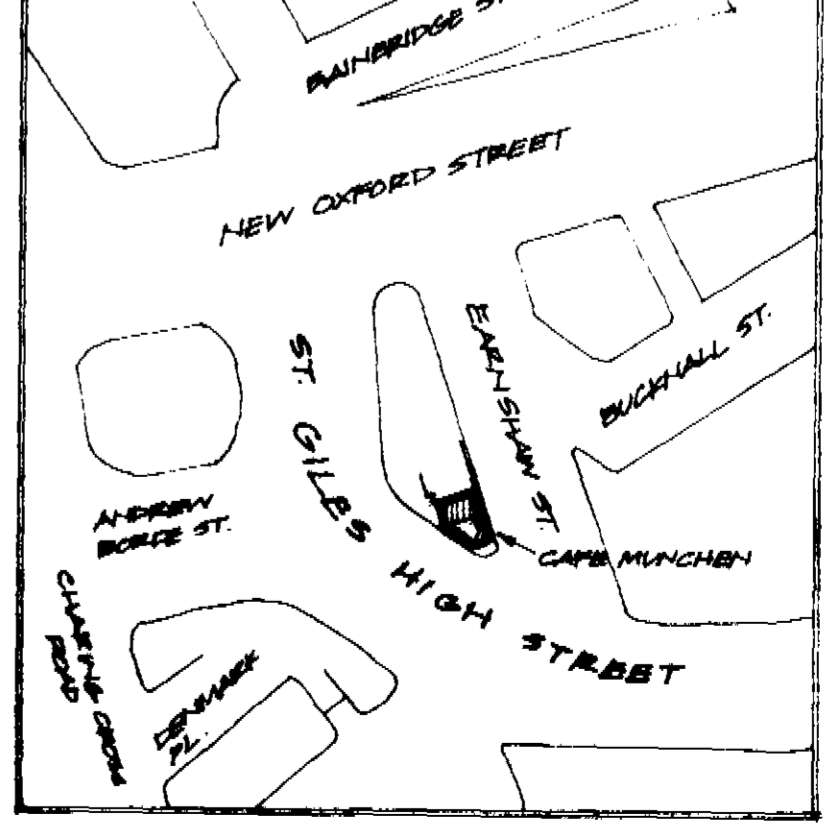
Retain and refurbish the existing arrival canopy board as shown. Background color to sign to be specified with any lettering to be in gold leaf with black edges to leaf pattern or similar on non-leaf pattern as shown.  
Decorative pattern of gold leaf with black edging as shown.

CA 928 0074/R1



A	High level fascia lettering shown non-illuminated.	26/5/92
✓	Lettering, No. AMENDED FROM 18 to 19.	1/5/92
REF	REVISION	DATE

## LOCATION PLAN 1:2500 APPROX.



JOB TITLE  
**CAFE MUNCHEN**  
ST. GILES HIGH ST.  
WC2.

**PROPOSED EXTERNAL SIGNAGE**

DRAWN **DBL**  
SCALE **1:5, 1:20**  
DATE **MAY '92**

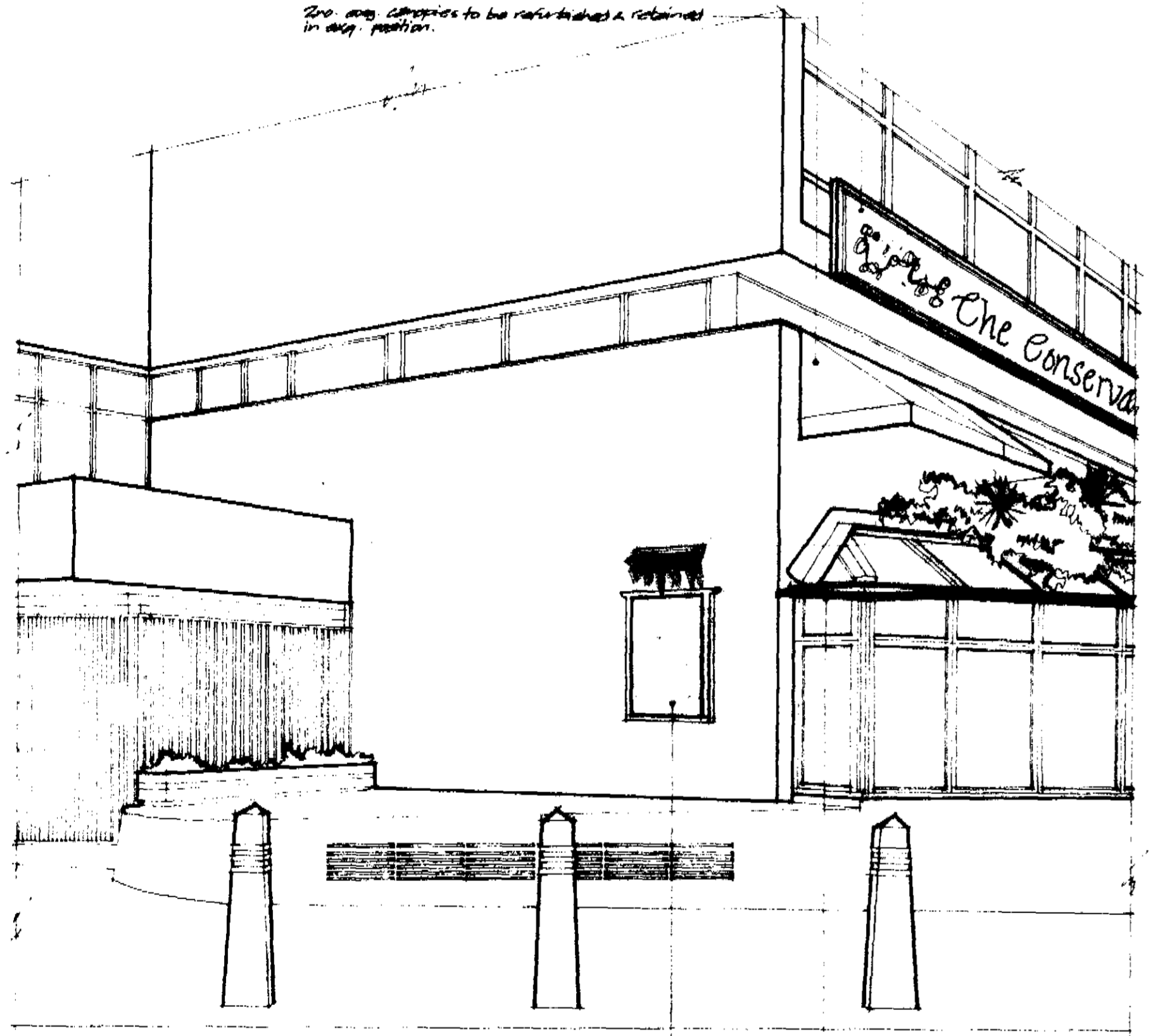


DRAWING No.  
**91300/19A**

**PHOENIX**  
ARCHITECTURE  
& INTERIORS LTD  
PHOENIX HOUSE • ROMAN TERRACE  
LONDON • SE8 2DU • FAX 081 891910  
TELEPHONE 081 270103

Big refurbished fascia sign as detailed elsewhere.

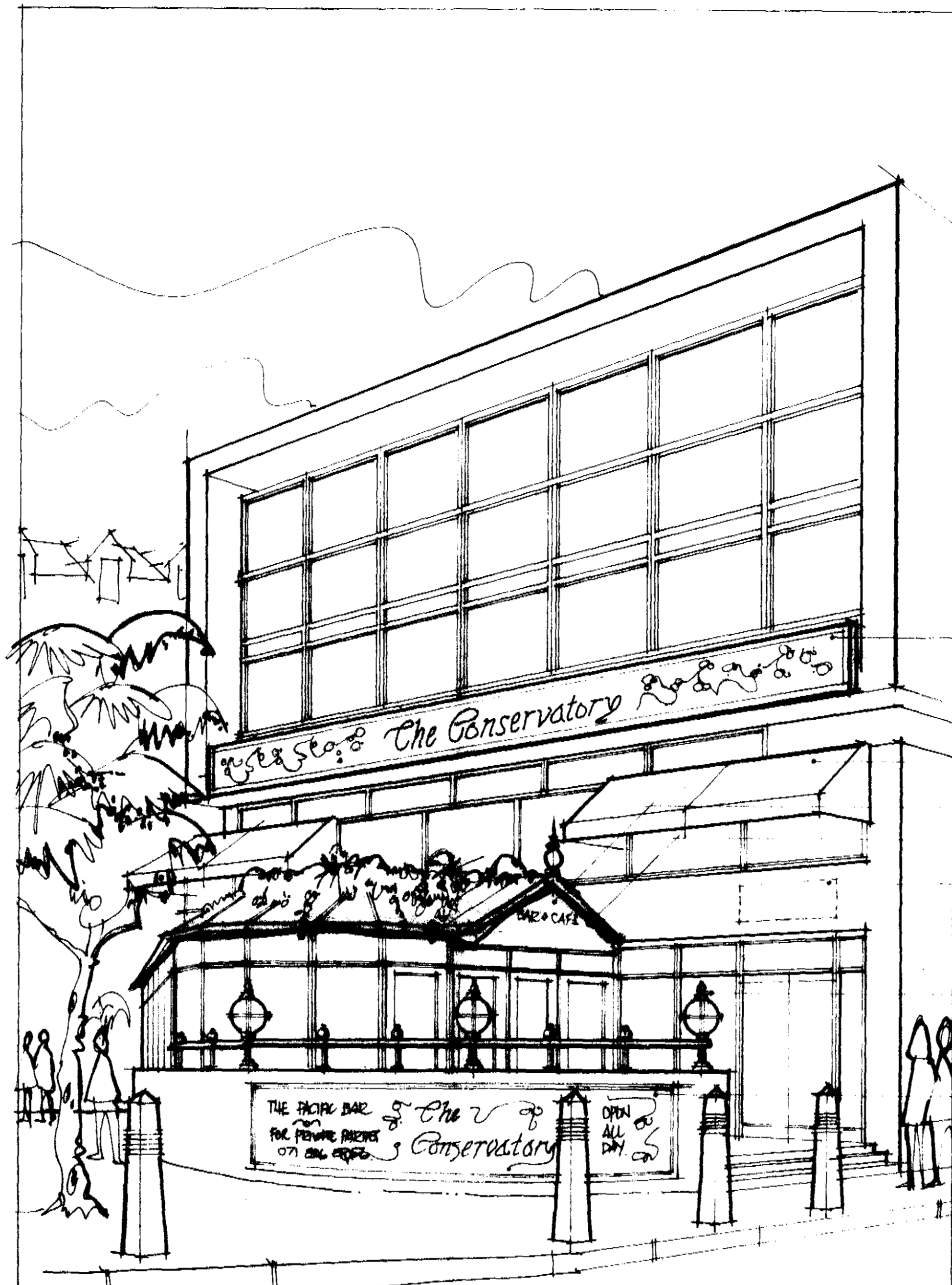
Two sets of signs to be refurbished & retained in old position.



SIDE ELEVATION N.T.S

Dotted line indicates the run of new paint to be fixed to the underside of the canopy as shown.

New fascia sign to be mounted on the underside of the fascia with 25mm returns in black or silver of letter faces.  
Background color to be in BLUE with perimeter moulding/trim in blue.  
Lettering to be in gold leaf with black edges to leaf pattern or similar on non-leaf pattern as shown.  
New 'The Conservatory' letters to be max. 900mm high.



FRONT ELEVATION N.T.S