

GENERAL NOTES ▽

All dimensions to be verified on site prior to commencement of any works.

FASCIA
FASCIA to be formed in high gloss GRP to class '0' surface spread of flame. GRP to have 'Hammered Look' textured finish, colour to be Red BS 04 E 53. TOP PART to be grey.
FASCIA LOGO

'Dixons' logo to be made up of individually formed perspex letters, each 100mm deep. Front face of letters to be white perspex, returns to be dark blue. Letters to be internally neon illuminated.

Each logo to be mounted on 2 no. highly polished stainless steel bars, both spaced 150mm from front face of fascia.

WINDOWS
To be 10mm float glass in 100mm x 50mm aluminium frame finished EPC Dove Grey BS 04 A 05. Glazing corners to be fitted & silicon cement jointed.

DOORS
Doors to be 12mm thick arcon plate glass. Top and bottom rails to be in highly polished stainless steel. Door handles to be vertical highly polished stainless steel poles 40mm diameter.

LOBBY FLOOR & STAIRTREADS
All to be tiled in non-slip ceramic floor tiles from AC Tiles (Ref: Summit F22 MEV10).

SECURITY GRILLE
Full width portcullis roller grilles, open mesh (brick bond pattern), bottom 300mm solid all finished Red BS 04 E 53. AS EXISTING.

GRILLE GUIDES
Accessed and removable grille guides to be finished Hammerite Light Blue.

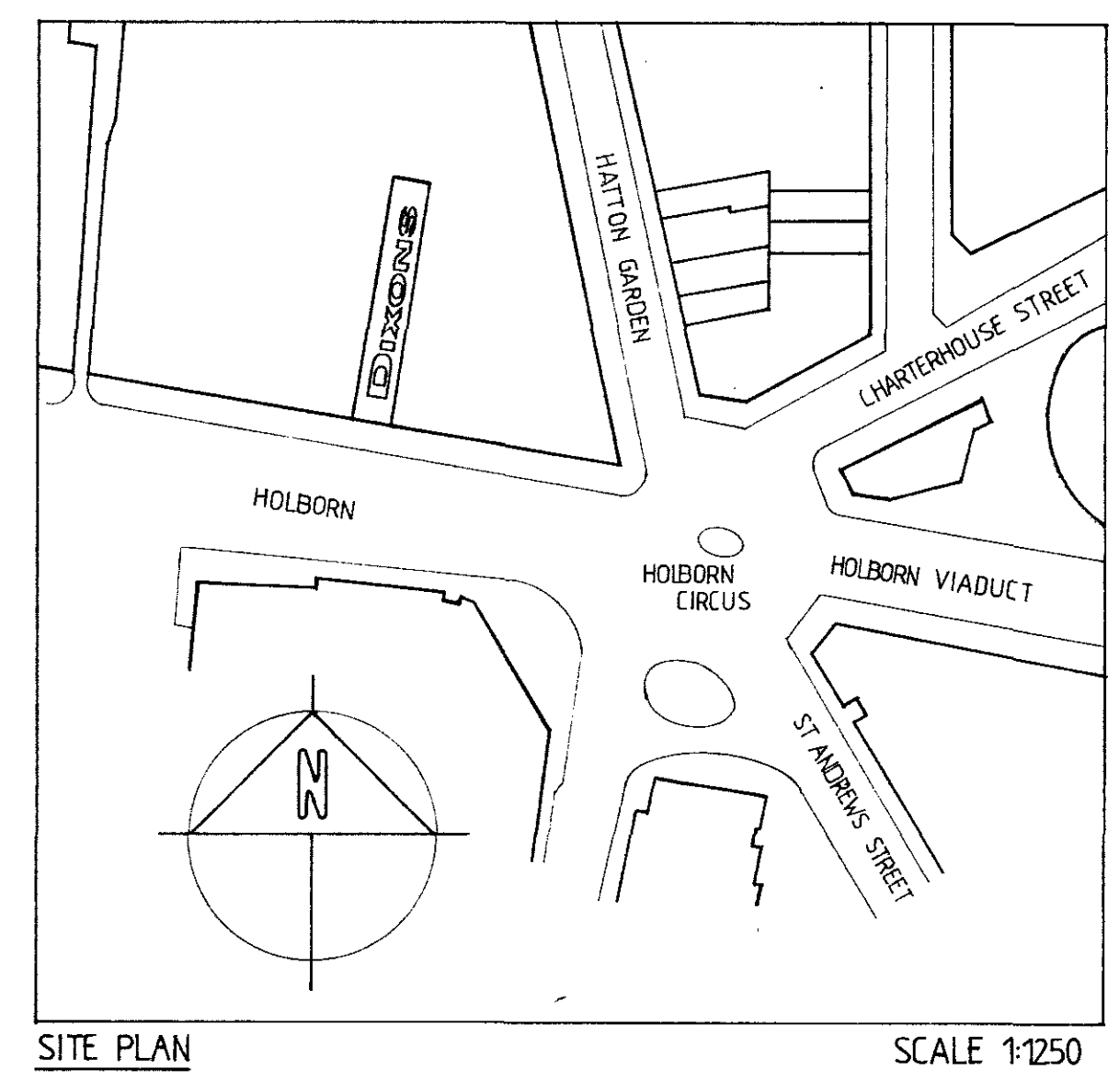
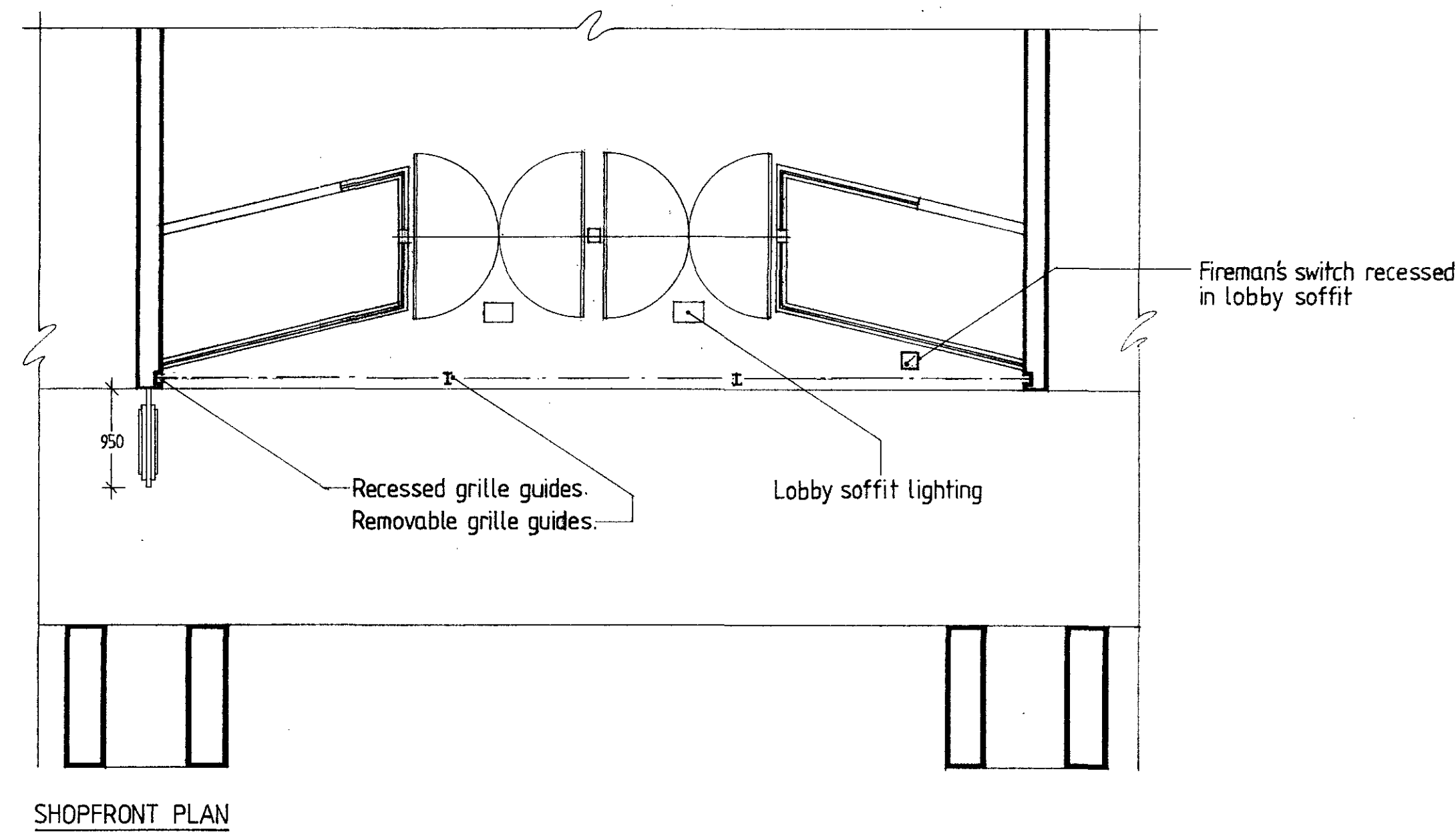
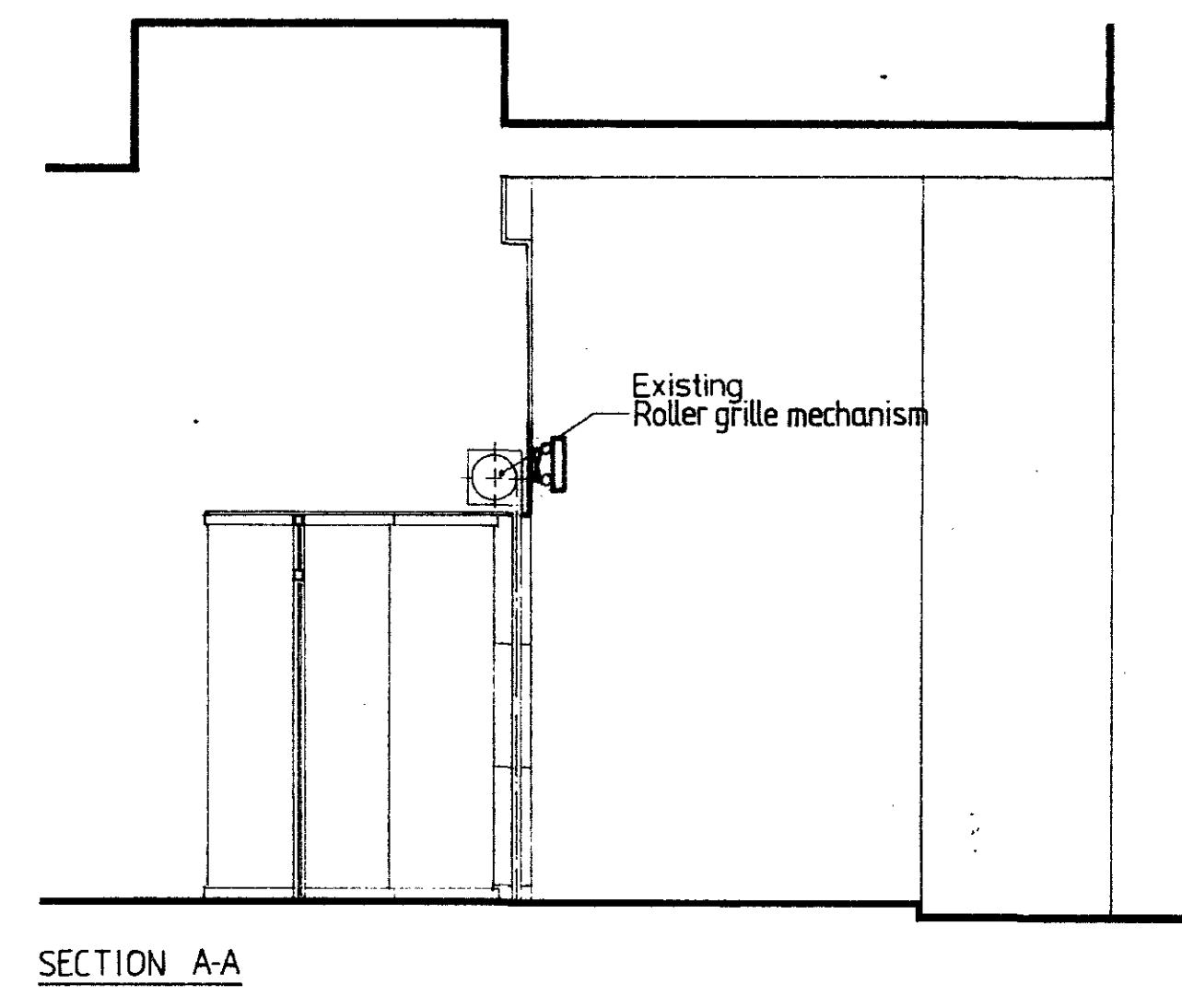
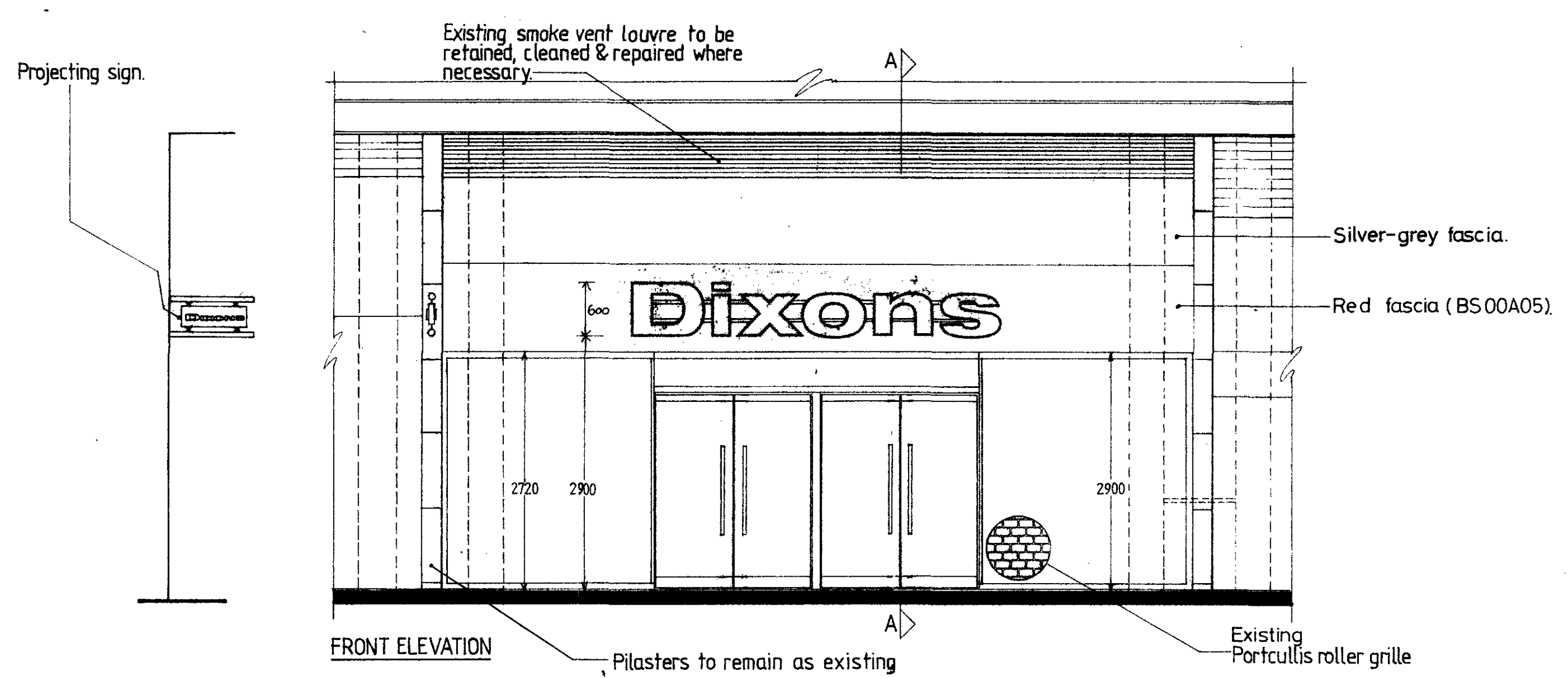
LOBBY SOFFIT
To be high gloss GRP finished 'Hammered Look' to match fascia. Coloured Hammerite Ref. Aluminium.

LOBBY SOFFIT LIGHTING
To be Compact downlighters Ref: DNH 049/2/250 W. Complete with control gear and waten power star lamps Ref: H015/250 W.

PROJECTING SIGN
Red BS 04 E 53 perspex box sign, internally fluorescent illuminated with individually formed letters to project 25mm either side. Letters to have white (Perspex Opal 040) faces with dark blue (Perspex Blue 745) returns. Box to be suspended between 2 no. 40mm diameter stainless steel rods on stainless steel crosses. Maximum overall dimensions to be 950mm length x 300mm depth x 150mm width.

C3-Logo altered to add stone effect mounted on Perspex. NWG. 17/7/89.
B2-Fascia deepened to remain at existing height. NWG. 12/6/89.
A1-'Spill-colour' fascia added. Logo repositioned & height amended to 650mm. Existing grille to be reused. Door handles reduced to 1000mm long. NWG. 5/6/89.

REVISIONS ▽



DIXONS

OFFICE COPY
TO CA & FO FILE

0375 AG

Copy sent to City Engineer with Ont. Form 28-89

DESIGN DEPARTMENT
46-50 UXBRIDGE ROAD
EALING, LONDON W5 2SU
Tel. 01-567 6611
Telex 934594 Facsimile 01-579 4711

LOCATION
DIXONS HOLBORN

ADDRESS
123 HOLBORN EC1

TITLE
SHOPFRONT DESIGN

DIMENSIONS

DRAWING No. HOL/2/NWG/1	REVISION C
----------------------------	---------------

SCALE 1:50	DATE 24/5/89
---------------	-----------------

DESIGNER
N. WOOD-GLOVER / A.A.TALIADOROS.

DRAWN BY
A.A.T.

CITY OF LONDON PLANNING
COPY CPO FP
25 JUL 1989 UD
CPAS DC
FILE