

ALL ROOF CLADDING PANELS
TO BE BRONZE ANODISED
ALUMINIUM TO MATCH EXISTING
IN BOTH COLOUR AND
PROFILE.

ALL ROOF CLADDING PANELS
TO BE BRONZE ANODISED
ALUMINIUM TO MATCH EXISTING
IN BOTH COLOR AND
PROFILE.



- 1 The main contractor, sub-contractor or supplier shall:
 - a Verify all dimensions at site and immediately report to the Architect any discrepancies on the drawings or divergence between drawings before putting the work concerned in hand fabricating the work or providing shop drawings
 - b Work to figured dimensions only (except where full size details are provided)
 - c Not vary any work shown on the drawings without obtaining prior approval from the Architect.
 - d Be responsible for requesting from the Architect any additional information required
 - e Supply to the Architect all shop drawings, illustrations, specifications, etc., of all specialist work to be incorporated in the Main Contract Works.
 - f Immediately inform the Architect if any work shown on this drawing is not in accordance with the relevant Codes of Practice recognised good practice throughout the industry and does not comply with the relevant Local Authority By-laws or Building Regulations
 - g Immediately advise the Architect/Quantity Surveyor of the effect upon programme and cost of any alterations to the proposed works shown on this drawing
- 2 This drawing supersedes all previous issues of the same drawing number with earlier reference.
- 3 This drawing is copyright to The Whitney Mackay-Lewis Partnership and the contents must not be disclosed to anyone without prior agreement.

Do not scale
this drawing

Rev	Date	init	chk
-----	------	------	-----

REVISIONS

Project Proposed roof alterations to
17 Charterhouse Street, London.

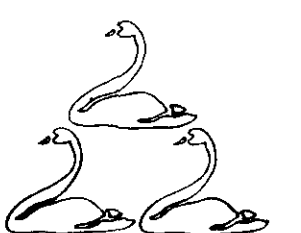
Drawing Title Part North & East Elevations.

Elevations. As Proposed.

Drawn by	Date	Scale
R.F.	Oct. 98.	1:100

Drawing Status

For planning application.



**THE WHINNEY
MACKAY-LEWIS
PARTNERSHIP**

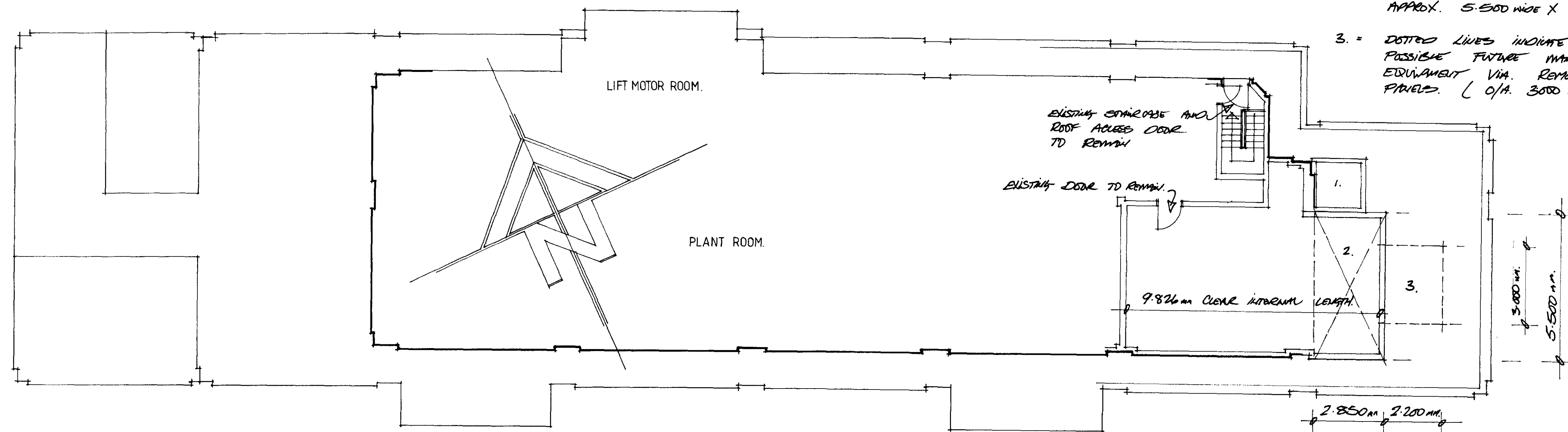
Chartered Architects Master Planners
Interior Designers Space Planners
Maple House 149 Tottenham Court Road London W1P 9LL
Telephone: 0171 388 3885 Facsimile: 0171 388 1222

Job No.	Drawing No.	Rev.
6295.	PL. / 04.	

ON BEHALF OF THE COUNCIL
22 FEB 1953
LONDON BRANCH OF CAMDEN
TOWN AND COUNCIL

RECEIVED
27 MAY 1938
LIBRARY OF THE CONGRESS

P9805001

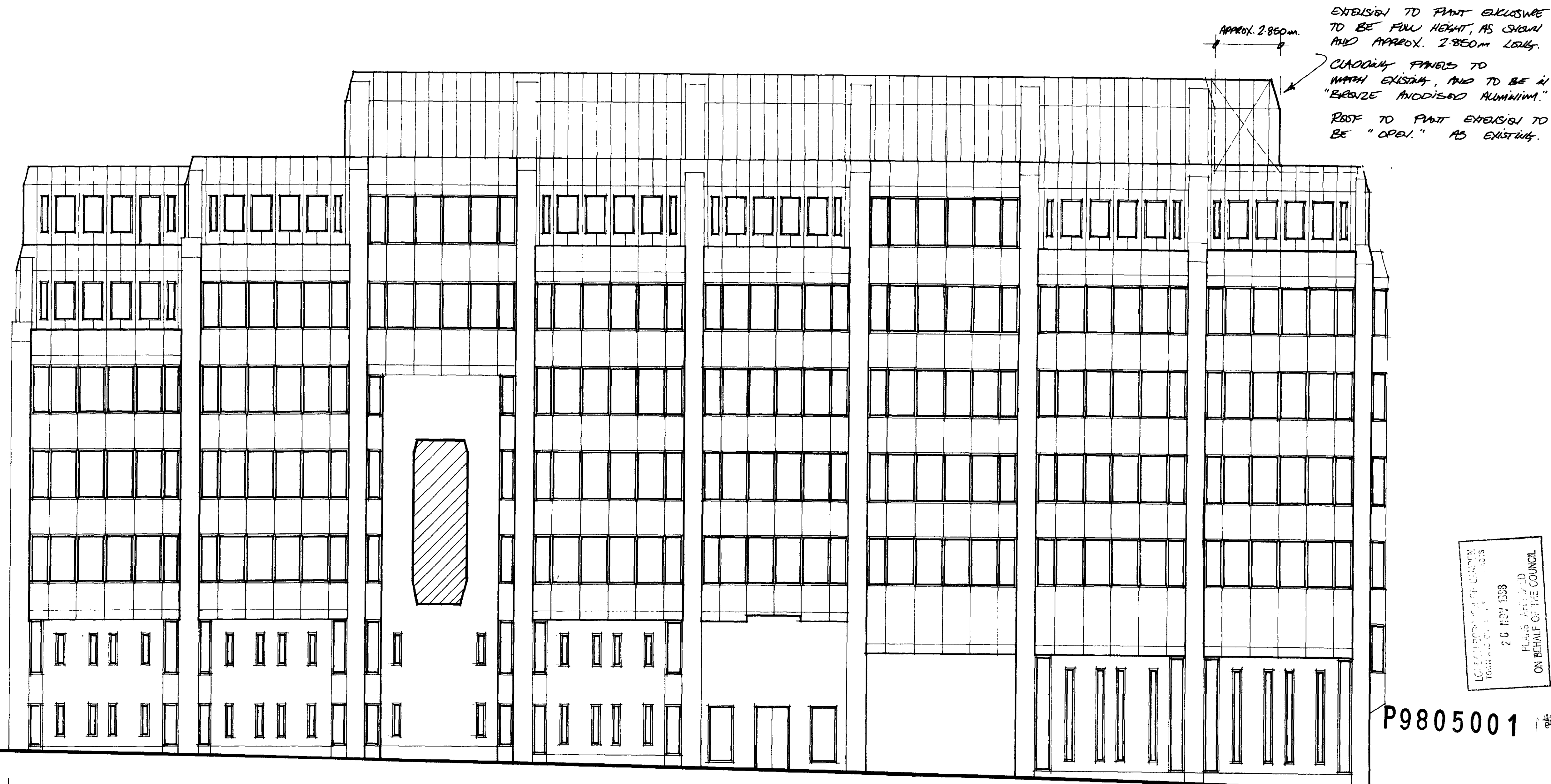


1. = EXISTING LIFT SHAFT (SMOKE VENT TO REMAIN).
2. = CROSS HATCHED AREA INDICATES PROPOSED ROOF PLANT ENCLOSURE EXTENSION, APPROX. 5.500 WIDE X 2.850m LONG.
3. = DOTTED LINES INDICATE AREA FOR POSSIBLE FUTURE MAINTENANCE OF EQUIPMENT VIA. REMAINING END PANELS (O/A. 3.000 WIDE X 2.200 LONG).

STANDARD INSTRUCTIONS

1. The main contractor, sub-contractor or supplier shall:
 - a. Verify all dimensions at site and immediately report to the Architect any discrepancies on the drawings or divergence between drawings before putting the work concerned in hand, fabricating the work or preparing shop drawings.
 - b. Work to figured dimensions only (except where full size details are provided).
 - c. Not vary any work shown on the drawings without obtaining prior approval from the Architect.
 - d. Be responsible for requesting from the Architect any additional information required.
 - e. Supply to the Architect all shop drawings, illustrations, specifications, etc. of all specialist work to be incorporated in the Main Contract Works.
 - f. Immediately inform the Architect if any work shown on this drawing is not in accordance with the relevant Codes of Practice, recognised good practice throughout the industry and does not comply with the relevant Local Authority By-laws or Building Regulations.
 - g. Immediately advise the Architect/Quantity Surveyor of the effect upon programme and cost of any alterations to the proposed works shown on this drawing.
2. This drawing supersedes all previous issues of the same drawing number with earlier revision suffix.
3. This drawing is copyright to The Whinney Mackay-Lewis Partnership and the contents must not be disclosed to anyone without prior agreement.

Do not scale this drawing



Rev	Date	init	chk

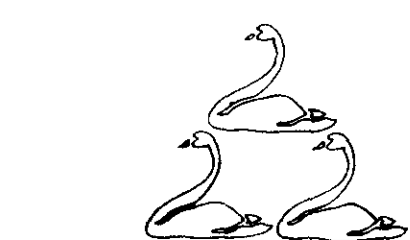
REVISIONS

Project Proposed roof alterations to 17 Charterhouse Street, London.

Drawing Title South elevation and Seventh floor plan. As Proposed.

Drawn by	Date	Scale
R.F.	Oct. 98.	1:100

Drawing Status For planning application.



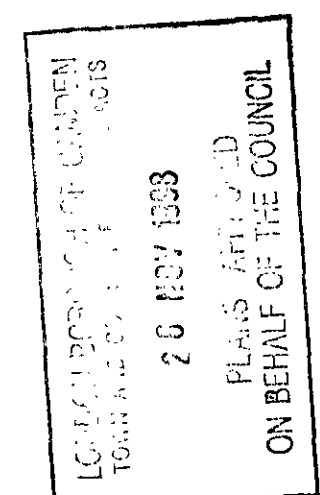
THE WHINNEY MACKAY-LEWIS PARTNERSHIP

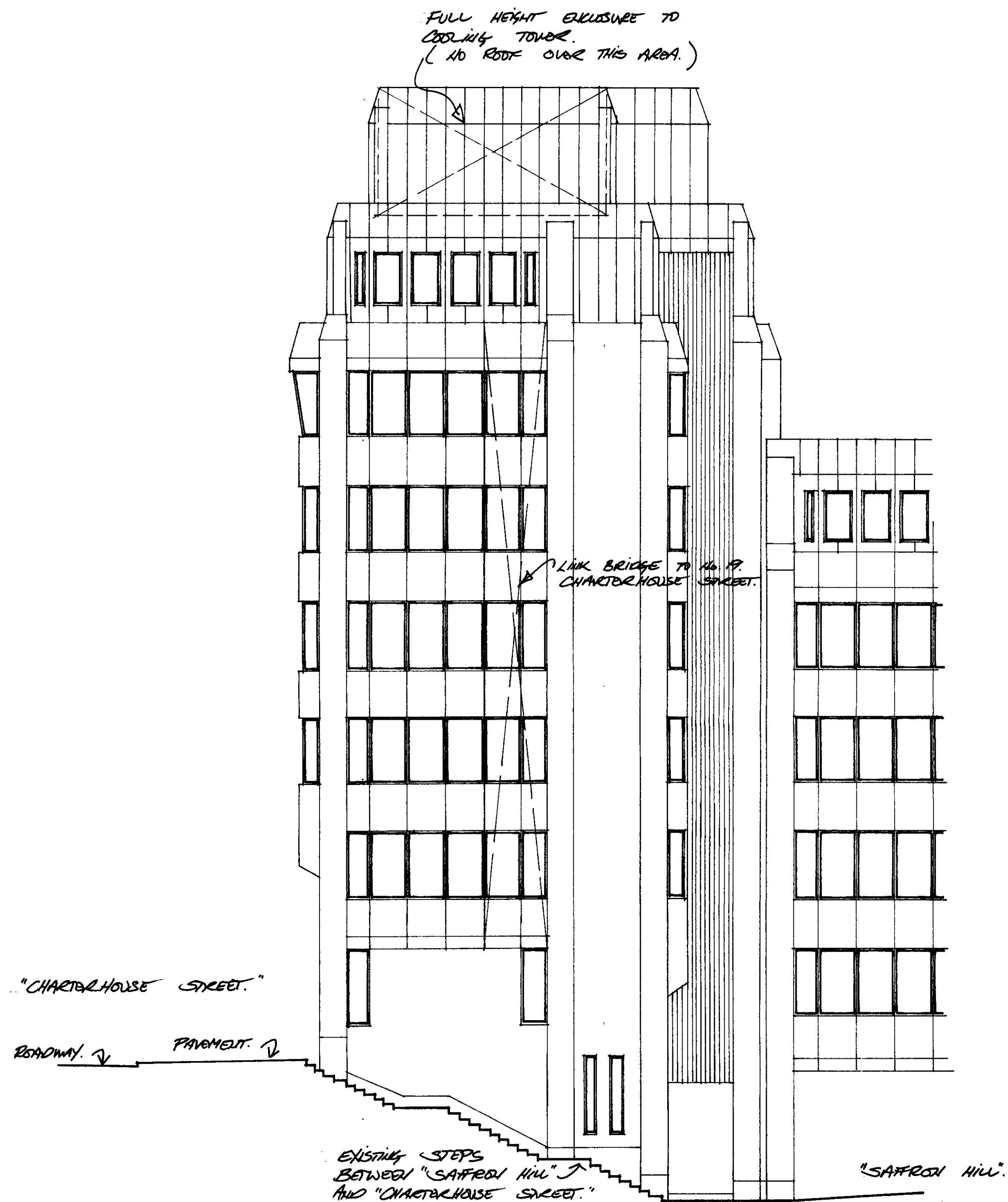
Chartered Architects Master Planners
Interior Designers Space Planners
Maple House 149 Tottenham Court Road London W1P 9LL
Telephone: 0171 388 3885 Facsimile: 0171 388 1222

Job No.	Drawing No.	Rev.
6295.	PL./03.	

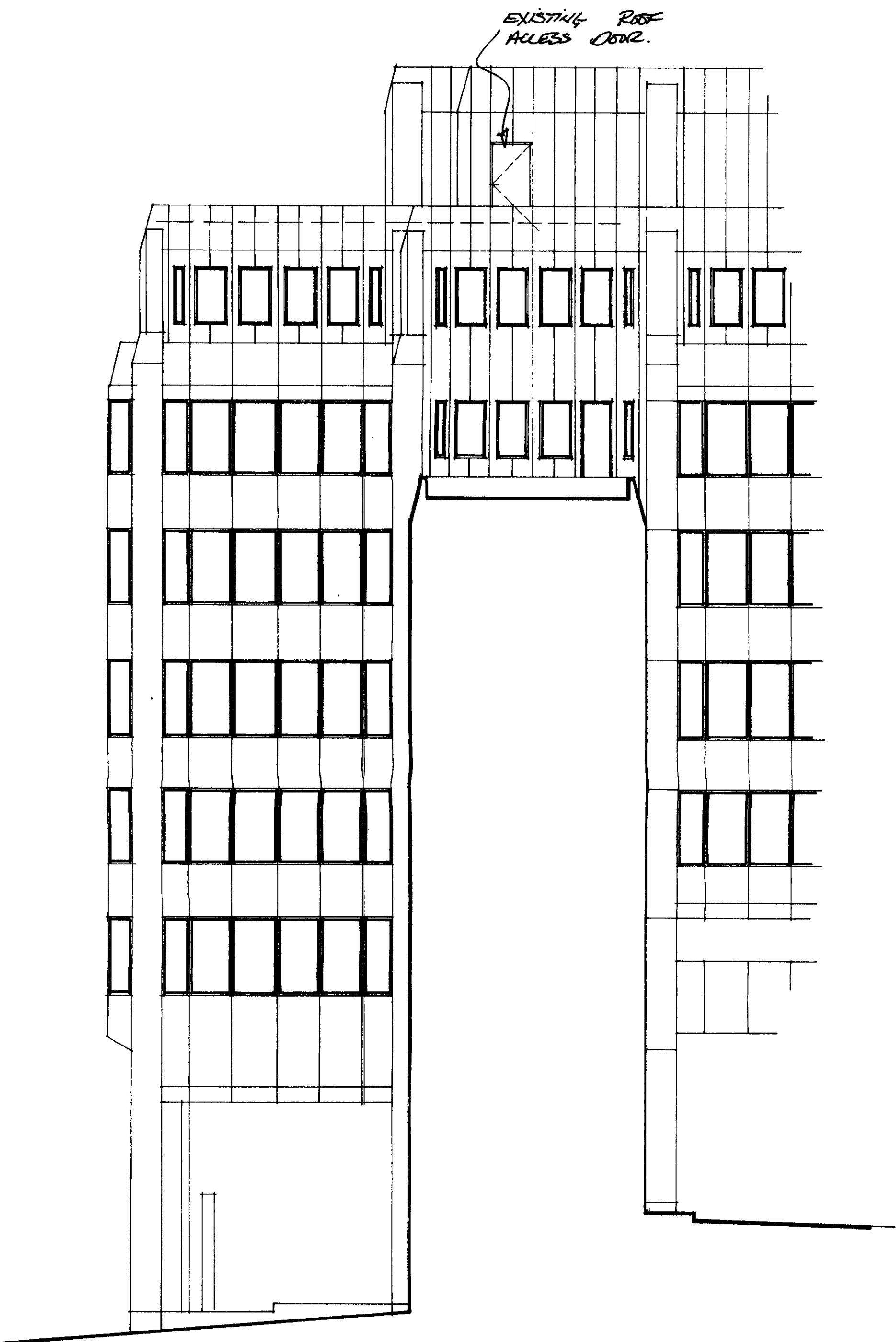
11 To 17 Charterhouse street. London. EC1N. 6RA. SOUTH ELEVATION.

P9805001





PART EAST ELEVATION.



PART NORTH ELEVATION.

- STANDARD INSTRUCTIONS
- The main contractor, sub-contractor or supplier shall:
 - Verify all dimensions at site and immediately report to the Architect any discrepancies on the drawings or divergence between drawings before putting the work concerned in hand, fabricating the work or preparing shop drawings.
 - Work to figured dimensions only (except where full size details are provided).
 - Not vary any work shown on the drawings without obtaining prior approval from the Architect.
 - Be responsible for requesting from the Architect any additional information required.
 - Supply to the Architect all shop drawings, illustrations, specifications, etc. of all specialist work to be incorporated in the Main Contract Works.
 - Immediately inform the Architect if any work shown on this drawing is not in accordance with the relevant Codes of Practice, recognised good practice throughout the industry and does not comply with the relevant Local Authority By-laws or Building Regulations.
 - Immediately advise the Architect/Quantity Surveyor of the effect upon programme and cost of any alterations to the proposed works shown on this drawing.
 - This drawing supersedes all previous issues of the same drawing number with earlier revision suffix.
 - This drawing is copyright to The Whinney Mackay-Lewis Partnership and the contents must not be disclosed to anyone without prior agreement.

Do not scale
this drawing

Rev	Date	init	chk
-----	------	------	-----

REVISIONS

Project Proposed roof alterations to
17 Charterhouse Street, London.

Drawing Title Part North & East
Elevations.
As existing.

Drawn by	Date	Scale
R.F.	Oct. 98.	1:100

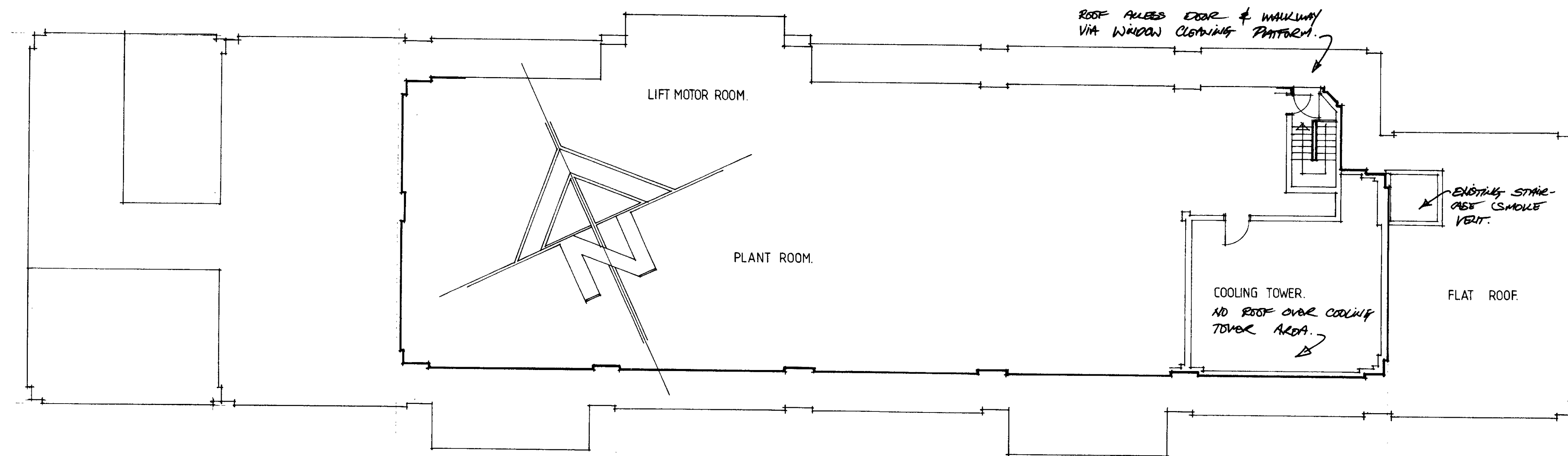
Drawing Status
For planning application.

LONDON BOROUGH OF CAMDEN
TOWN AND COUNCIL
26 MAY 1998
PLANNING ACTS
26 MAY 1998
ON BEHALF OF THE COUNCIL

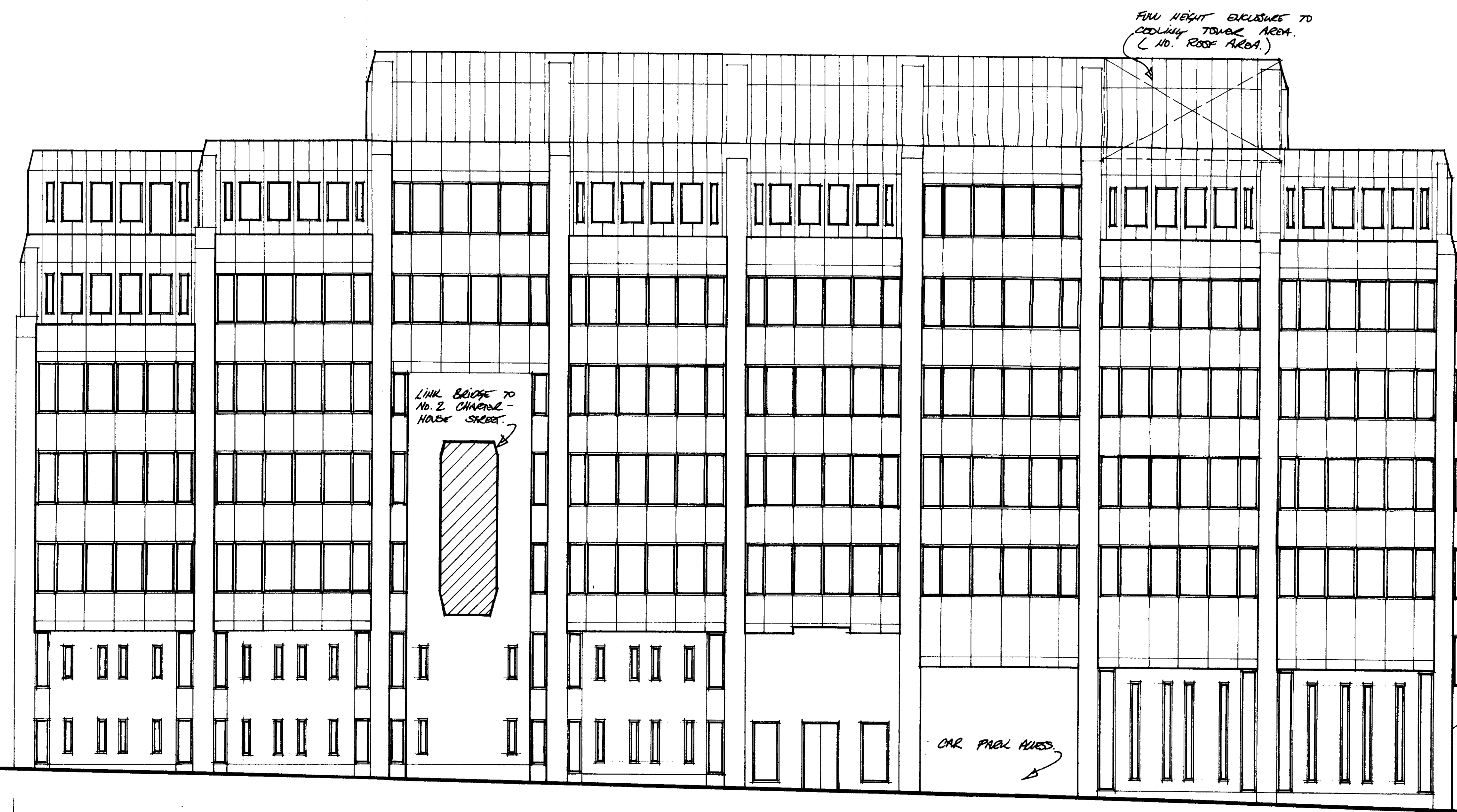
P9805001


**THE WHINNEY
MACKAY-LEWIS
PARTNERSHIP**
Chartered Architects Master Planners
Interior Designers Space Planners
Maple House 149 Tottenham Court Road London W1P 9LL
Telephone: 0171 388 3885 Facsimile: 0171 388 1222

Job No.	Drawing No.	Rev.
6295.	PL./02.	



SEVENTH FLOOR PLAN.



11 To 17 Charterhouse street. London. EC1N. 6RA. SOUTH ELEVATION.

STANDARD INSTRUCTIONS

- 1 The main contractor, sub-contractor or supplier shall:
 - a Verify all dimensions at site and immediately report to the Architect any discrepancies on the drawings or divergence between drawings before putting the work concerned in hand, fabricating the work or preparing shop drawings.
 - b Work to figured dimensions only (except where full size details are provided).
 - c Not vary any work shown on the drawings without obtaining prior approval from the Architect.
 - d Be responsible for requesting from the Architect any additional information required.
 - e Supply to the Architect all shop drawings, illustrations, specifications, etc. of all specialist work to be incorporated in the Main Contract Works.
 - f Immediately inform the Architect if any work shown on this drawing is not in accordance with the relevant Codes of Practice, recognised good practice throughout the industry and does not comply with the relevant Local Authority By-laws or Building Regulations.
 - g Immediately advise the Architect/Quantity Surveyor of the effect upon programme and cost of any alterations to the proposed works shown on this drawing.
- 2 This drawing supersedes all previous issues of the same drawing number with earlier revision suffix.
- 3 This drawing is copyright to The Whinney Mackay-Lewis Partnership and the contents must not be disclosed to anyone without prior agreement.

Do not scale
this drawing

Rev	Date	init	chk

REVISIONS

Project Proposed roof alterations to
17 Charterhouse Street, London.

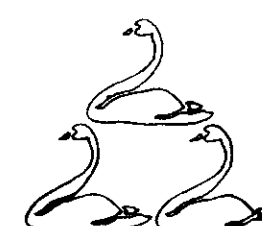
Drawing Title South elevation and
Seventh floor plan.
As existing.

Drawn by	Date	Scale
R.F.	Oct. 98.	1:100

Drawing Status
For planning application.

P9805001

LINK BRIDGE TO NO. 17.
BEYOND.



**THE WHINNEY
MACKAY-LEWIS
PARTNERSHIP**

Chartered Architects Master Planners
Interior Designers Space Planners
Maple House 149 Tottenham Court Road London W1P 9LL
Telephone: 0171 388 3885 Facsimile: 0171 388 1222

Job No.	Drawing No.	Rev.
6295.	PL. /01.	