

DO NOT SCALE THIS DRAWING

Contractors are to check all dimensions prior to commencement on site and notify the Architect of any errors, omissions or discrepancies.



rev description date
PLANNING ISSUE

client
Parkes Incorporated

project
British Museum Study Centre
21-31 New Oxford Street
London W1

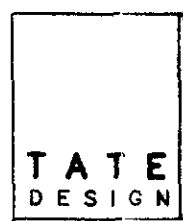
drawing
Perspective view from the
junction of Bloomsbury Way
and Museum Street

scale	drawn	date
1:1	MB	04.04.97
cd reference		

job	dwg	revision
726	PL(05)05	F

TATE AND HINDLE DESIGN LIMITED
Ramillies Buildings
215 Oxford Street
London W1R 1AG

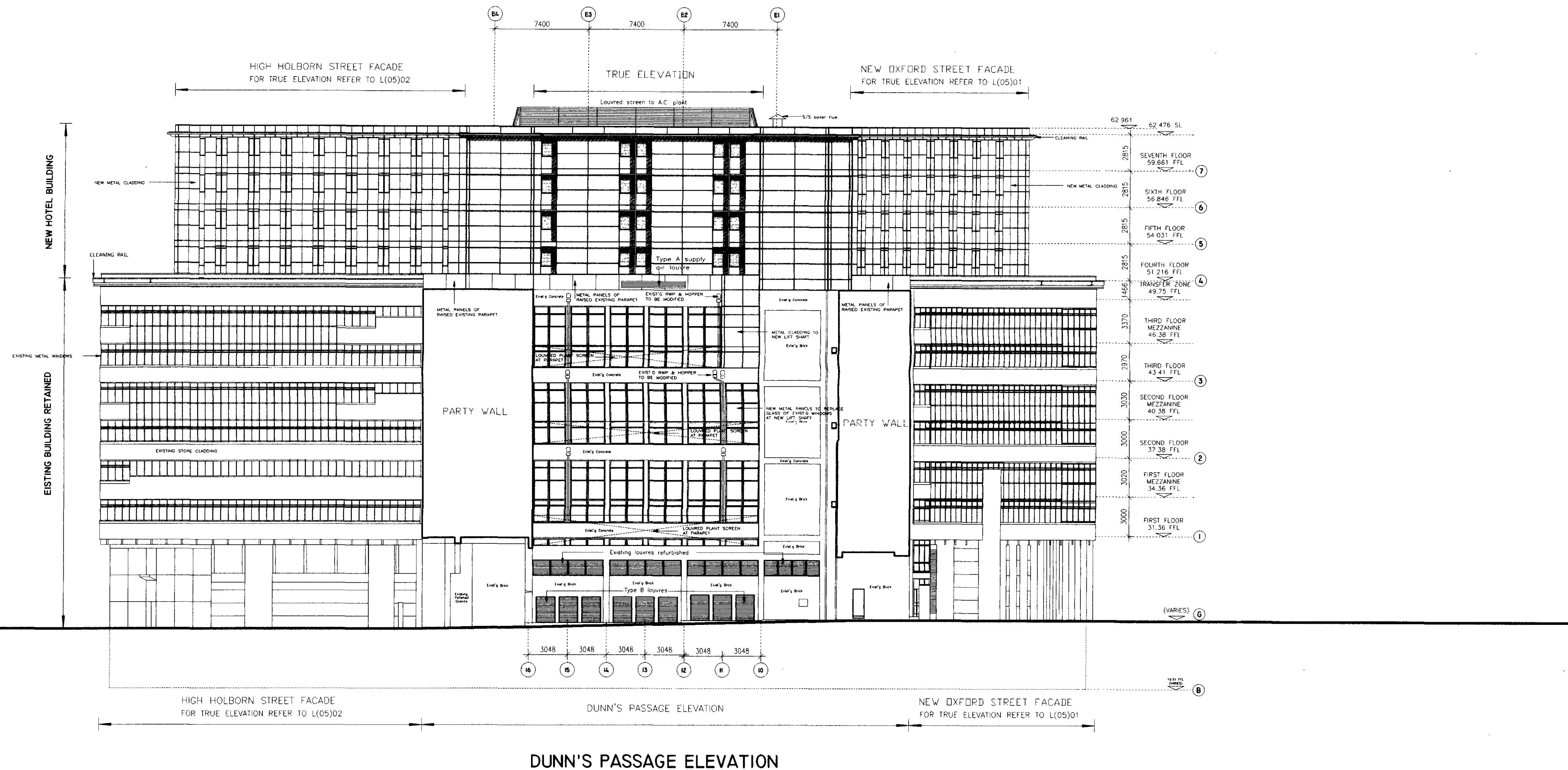
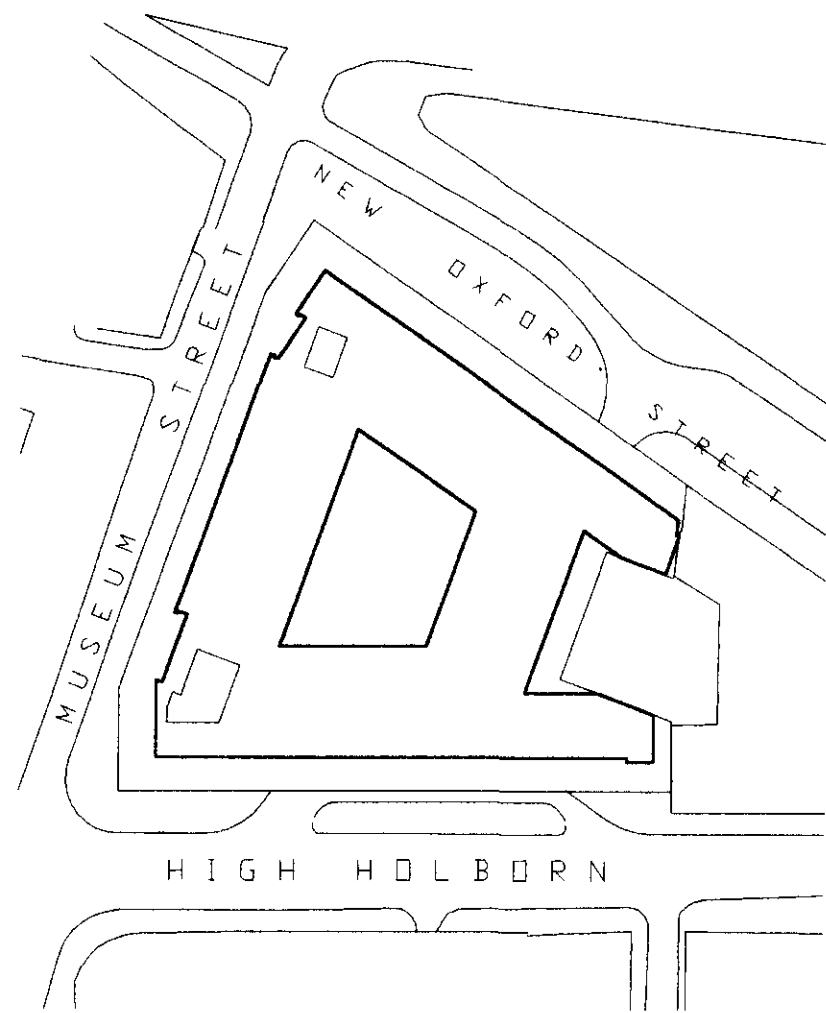
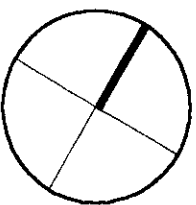
telephone 0171 287 2412 facsimile 0171 437 3148



726 Rev F
PL(05)05
British Museum
Study Centre
NDLE

DO NOT SCALE THIS DRAWING

Contractors are to check all dimensions prior to commencement on site and notify the Architect of any errors, omissions or discrepancies



HOTEL ELEVATION:
TO BE POWDER COATED METAL WITH LIGHT GREY METALIC FINISH PANELS TO HAVE 30mm SHADOW GAP JOINT, WITH WINDOWS HAVING LOUVRED SHADING ON SOUTH & WEST ELEVATIONS.

BRITISH MUSEUM STUDY CENTRE ELEVATION:
EXISTING METAL WINDOWS TO BE REPAIRED & REPAINTED IN DARK BRONZE FINISH, WITH NEW LOUVRES IN MATCHING FINISH. EXISTING PORTLAND STONE TO BE REPAIRED & CLEANED.

A1, A2, A3 AND/OR B1 ELEVATIONS.
FULL HEIGHT GLAZING FROM GROUND TO FIRST FLOOR, WITH NEW DOORS & HIGH LEVEL SECURITY GRILLES & GATES IN METAL WITH BRONZE FINISH. EXISTING POLISHED GRANITE FACING WHERE RETAINED IS TO BE REPAIRED & CLEANED.

A Hotel paneling and windows redrawn as detail SK(2)105A as submitted 22.07.97
Existing elevations added
Louvers and boiler flue added
rev description date

PLANNING ISSUE

client
Parkes Incorporated

project
**British Museum Study Centre
21-31 New Oxford Street
London W1**

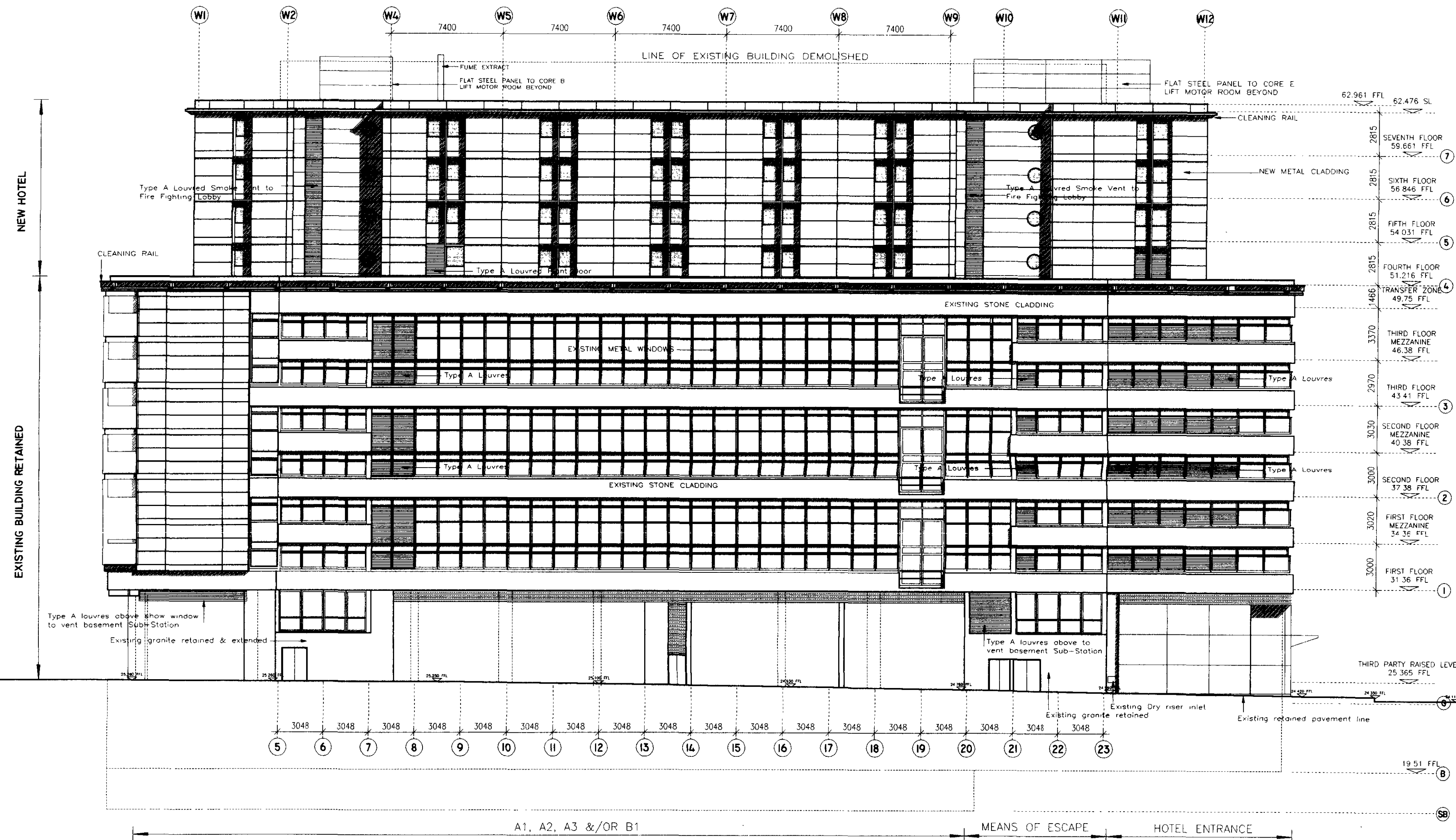
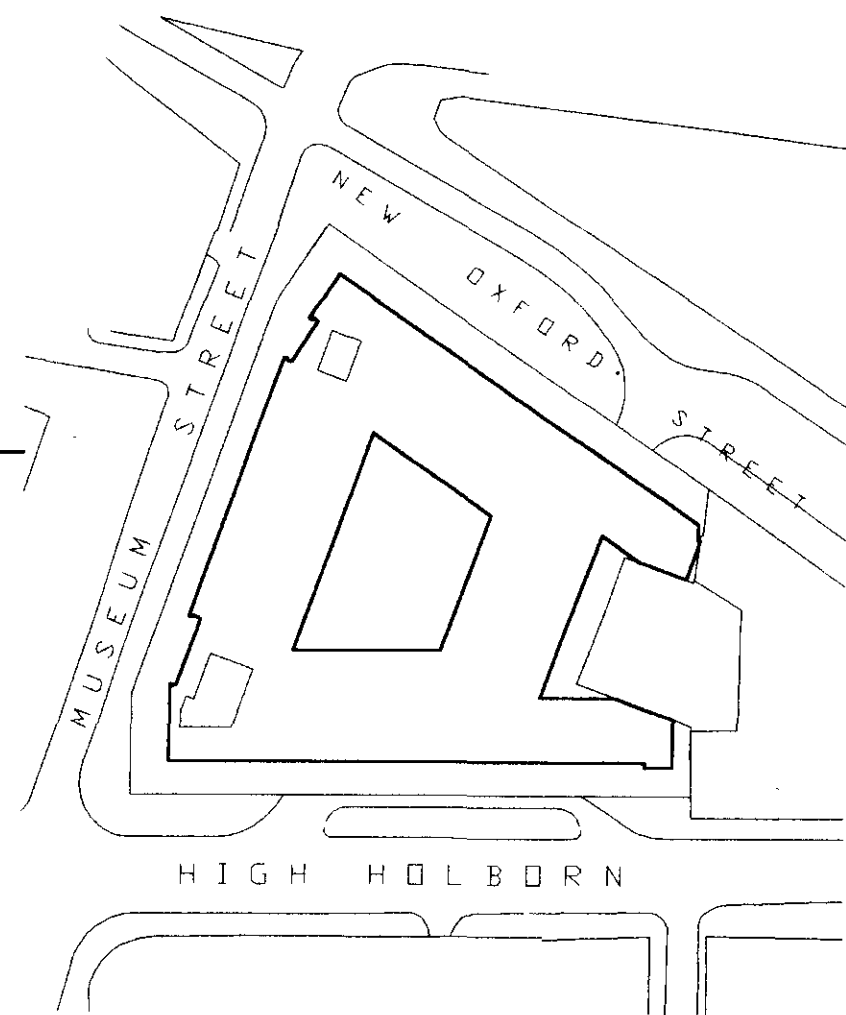
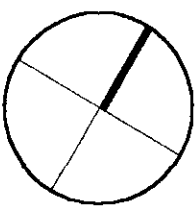
drawing
Proposed East Elevation

P9704327R3

scale 1:200	drawn JC	date 04.04.97
cad reference w:\726\model\elev\726E-EP		
job 726	dwg PL(05)04	revision A
TATE AND HINDLE DESIGN LIMITED Ramillies Buildings 215 Oxford Street London W1R 1AG telephone 0171 287 2412 facsimile 0171 437 3148		
HINDLE TATE DESIGN LIMITED		

DO NOT SCALE THIS DRAWING

Contractors are to check all dimensions prior to commencement on site and notify the Architect of any errors, omissions or discrepancies



MUSEUM STREET FACADE

HOTEL ELEVATION:

TO BE POWDER COATED METAL WITH LIGHT GREY METALIC FINISH PANELS TO HAVE 30mm SHADOW GAP JOINT, WITH WINDOWS HAVING LOUVRED SHADING ON SOUTH & WEST ELEVATIONS.

BRITISH MUSEUM STUDY CENTRE ELEVATION:

EXISTING METAL WINDOWS TO BE REPAIRED & REPAINTED IN DARK BRONZE FINISH, WITH NEW LOUVRES IN MATCHING FINISH. EXISTING PORTLAND STONE TO BE REPAIRED & CLEANED.

A1, A2, A3 AND/OR B1 ELEVATIONS:

FULL HEIGHT GLAZING FROM GROUND TO FIRST FLOOR WITH NEW DOORS & HIGH LEVEL SECURITY GRILLES & GATES IN METAL WITH BRONZE FINISH. EXISTING POLISHED GRANITE FACING WHERE RETAINED IS TO BE REPAIRED & CLEANED

A ROOF TOP PLANT MODIFIED AND FUME EXTRACT ADDED; CLEANING RAIL MODIFIED; MUSEUM PLANT ROOM LOUVRES ADDED/ MODIFIED; NORTH WEST CORNER AMENDED WITH PANELING AND NEW GLAZING ADDED; HOTEL PANELING AND WINDOWS REDRAWN AS DETAIL SK(21)05A AS SUBMITTED 22.07.97 SOUTH WEST CORNER ESCAPE DOORS RELOCATED AND HOTEL ENTRANCE MODIFIED WITH CONTINUATION OF LOUVRES OVER.

rev description date

PLANNING ISSUE

client

Parkes Incorporated

project

British Museum Study Centre
21-31 New Oxford Street
London W1

drawing

Proposed West Elevation

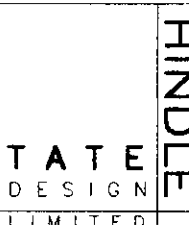
scale 1:200 drawn JC date 04.04.97

cod reference W:\726\model\elev\726E-WP

726 PL(05)03 A

TATE AND HINDLE DESIGN LIMITED
Ramillies Buildings
215 Oxford Street
London W1R 1AG

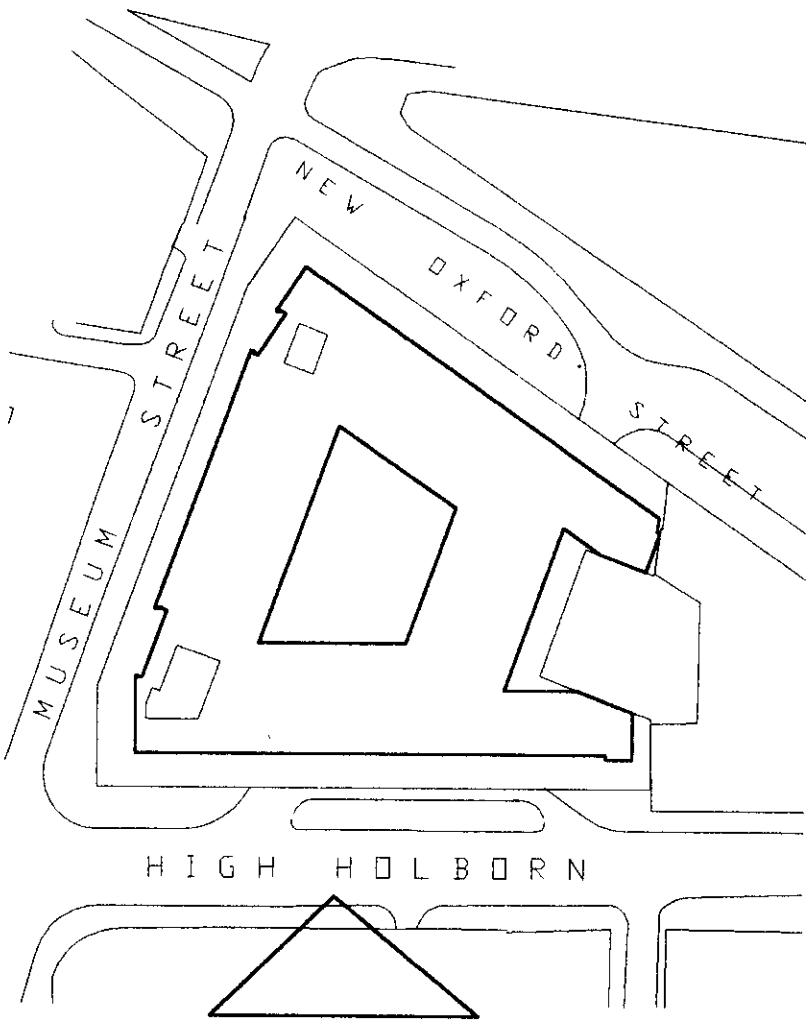
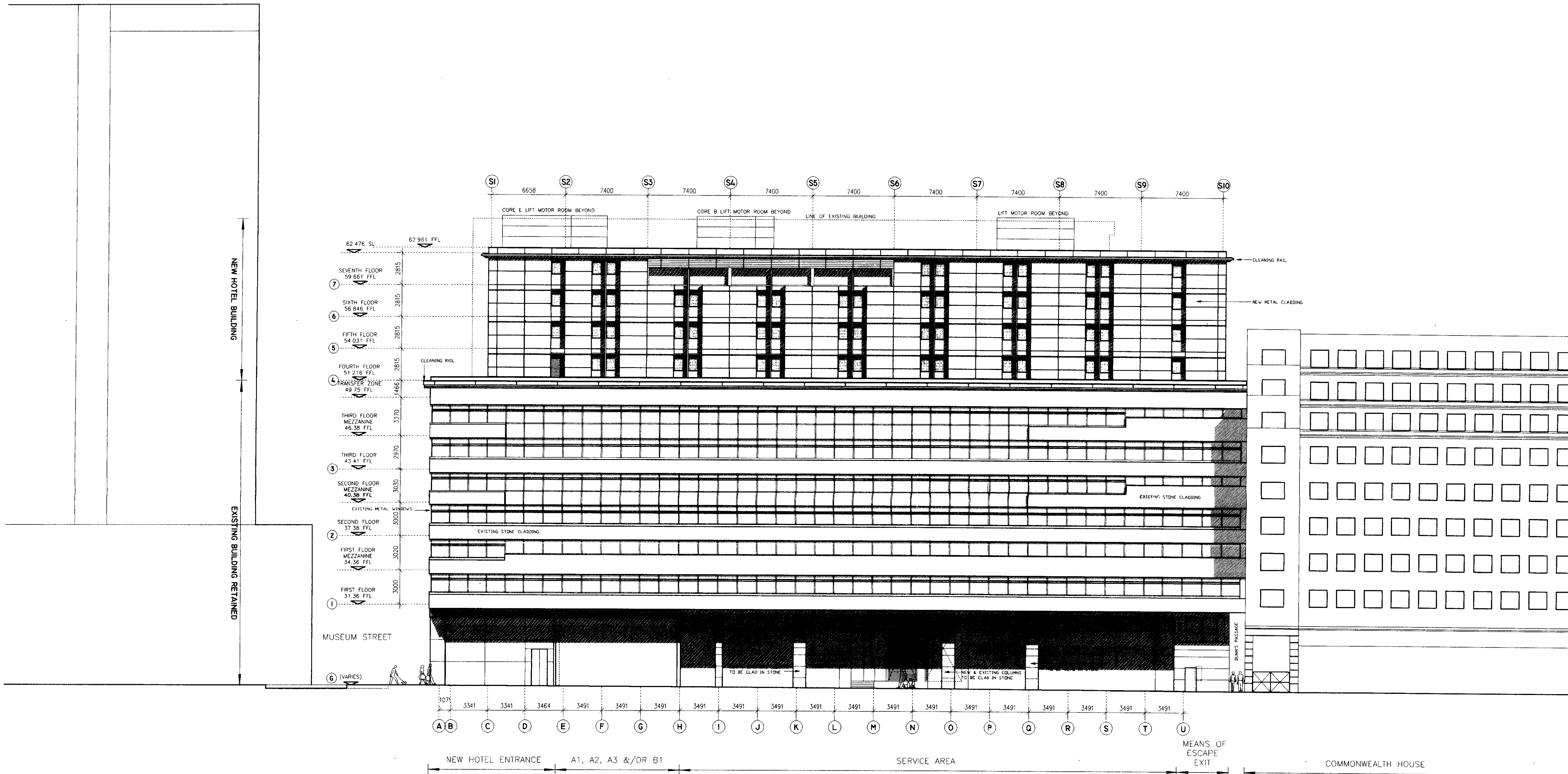
Telephone 0171 287 2412 facsimile 0171 437 3148



P9704327R3

DO NOT SCALE THIS DRAWING

Contractors are to check all dimensions prior to commencement on site and notify the Architect of any errors, omissions or discrepancies.



HOTEL ELEVATION:

TO BE POWDER COATED METAL WITH LIGHT GREY METALIC FINISH PANELS TO HAVE 30mm SHADOW GAP JOINT, WITH WINDOWS HAVING LOUVRED SHADING ON SOUTH & WEST ELEVATIONS.

BRITISH MUSEUM STUDY CENTRE ELEVATION:

EXISTING METAL WINDOWS TO BE REPAIRED & REPAINTED IN DARK BRONZE FINISH, WITH NEW LOUVRES IN MATCHING FINISH. EXISTING PORTLAND STONE TO BE REPAIRED & CLEANED.

A1, A2, A3 AND/OR B1 ELEVATIONS:

FULL HEIGHT GLAZING FROM GROUND TO FIRST FLOOR, WITH NEW DOORS & HIGH LEVEL SECURITY GRILLES & GATES IN METAL WITH BRONZE FINISH. EXISTING POLISHED GRANITE FACING WHERE RETAINED IS TO BE REPAIRED & CLEANED.

A ROOF TOP PLANT MODIFIED, CLEANING RAILS 04.09.98
MODIFIED SOUTH WEST CORNER, GROUND FLOOR,
HOTEL ENTRANCE MODIFIED, INCLUDING GLAZING,
CANOPY & LOUVRES.
WINDOWS REDRAWN AS DETAIL SK(21)D5A AS SUB-
MITTED 22.07.97. SOUTH WEST CORNER

rev description date

PLANNING ISSUE

client

Parkes Incorporated

project

British Museum Study Centre
21-31 New Oxford Street
London W1

drawing

Proposed South Elevation

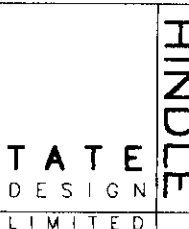
scale 1:200 drawn JC date 04.04.97

cod reference w:\726\model\elev\726E-SP

job 726 des PL(05)02 revision A

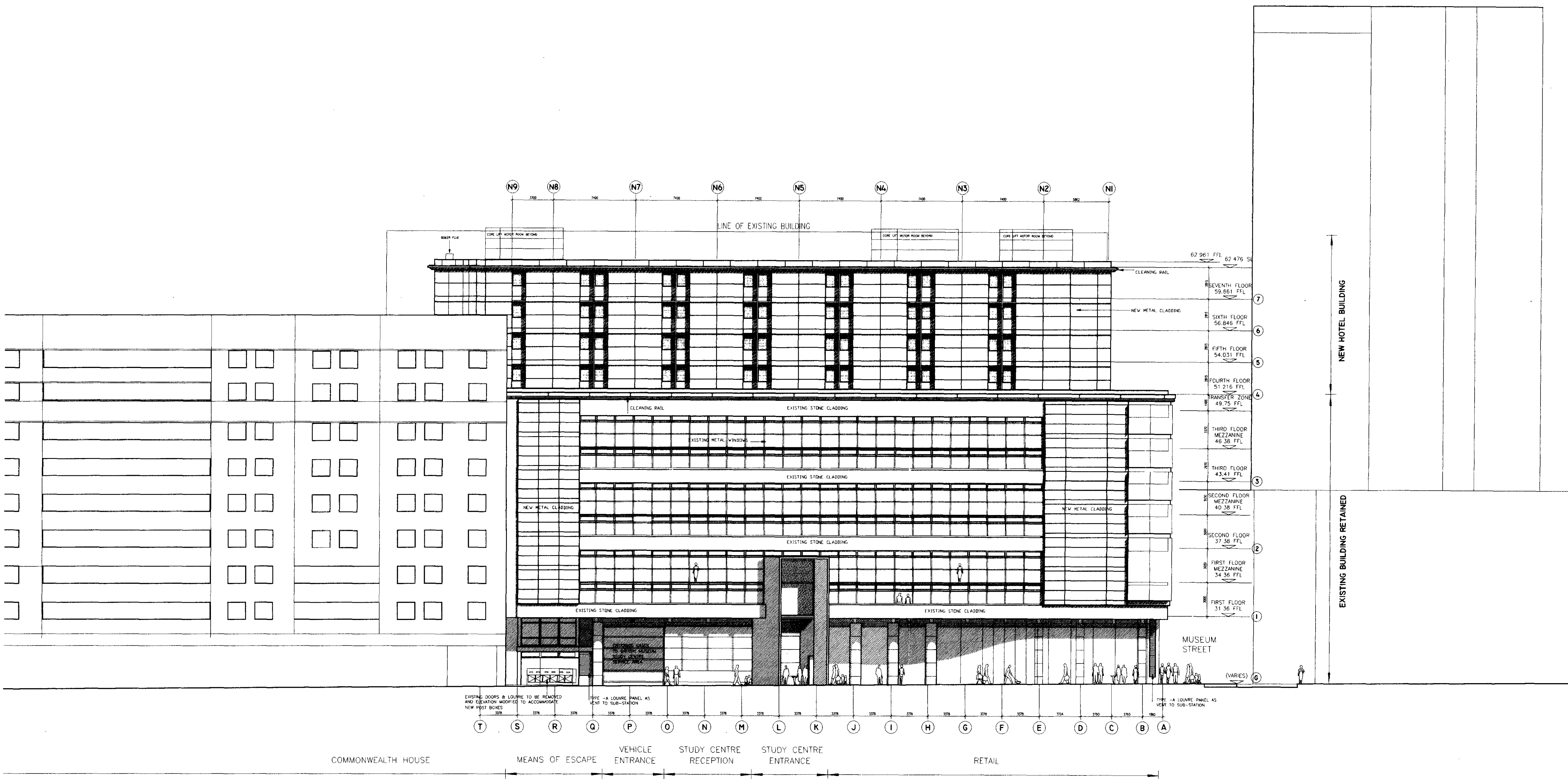
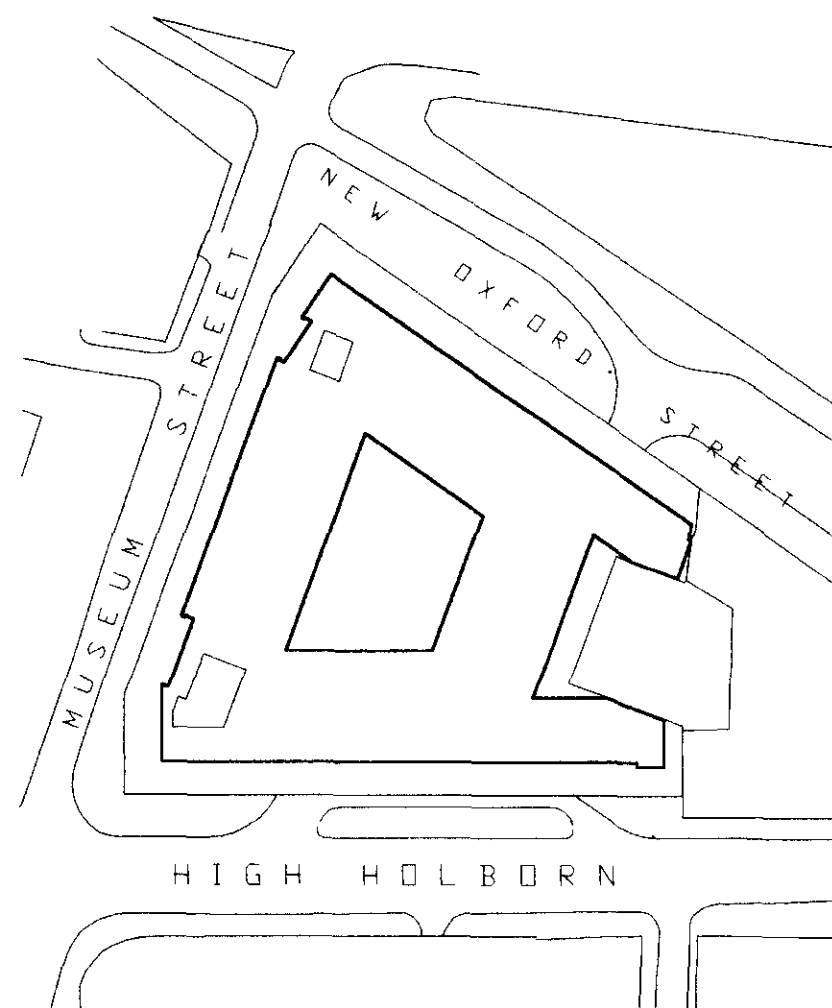
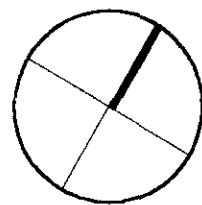
TATE AND HINDLE DESIGN LIMITED
Ramillies Buildings
215 Oxford Street
London W1R 1AG

Telephone 0171 287 2412 Facsimile 0171 437 3148



DO NOT SCALE THIS DRAWING

Contractors are to check all dimensions prior to commencement on site and notify the architect of any errors, omissions or discrepancies



NEW OXFORD STREET FACADE

HOTEL ELEVATION:
TO BE POWDER COATED METAL WITH LIGHT GREY METALIC FINISH PANELS TO HAVE 30mm SHADOW GAP JOINT, WITH WINDOWS HAVING LOUVRED SHADING ON SOUTH & WEST ELEVATIONS.

BRITISH MUSEUM STUDY CENTRE ELEVATION.
EXISTING METAL WINDOWS TO BE REPAIRED & REPAINTED IN DARK BRONZE FINISH, WITH NEW LOUVRES IN MATCHING FINISH. EXISTING PORTLAND STONE TO BE REPAIRED & CLEANED.

A1, A2, A3 AND/OR B1 ELEVATIONS.
FULL HEIGHT GLAZING FROM GROUND TO FIRST FLOOR, WITH NEW DOORS & HIGH LEVEL SECURITY GRILLES & GATES IN METAL WITH BRONZE FINISH. EXISTING POLISHED GRANITE FACING WHERE RETAINED IS TO BE REPAIRED & CLEANED.

A ROOF TOP PLANT MODIFIED AND BOILER FLUE ADDED. CLEANING RAILS MODIFIED. NORTH EAST CORNER AMENDED WITH NEW PANELING. NORTH WEST CORNER AMENDED WITH NEW PANELING. AND NEW GLAZING ADDED. HOTEL PANELING AND WINDOWS REDRAWN AS DETAIL SK(21)054 AS SUBMITTED 22.07.97. GROUND FLOOR MUSEUM VEHICLE ENTRANCE GATES ADDED. AND LOUVRES CONTINUED OVER

PLANNING ISSUE

client
Parkes Incorporated

project
British Museum Study Centre
21-31 New Oxford Street
London W1

drawing
Proposed North Elevation

P9704327R3

scale
1:200

drawn
JC

date
04.04.97

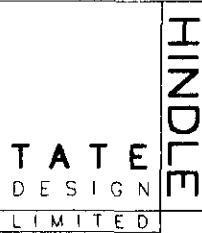
cds reference
w:\726\Draw\elev\north

job
726

desig
PL(05)01

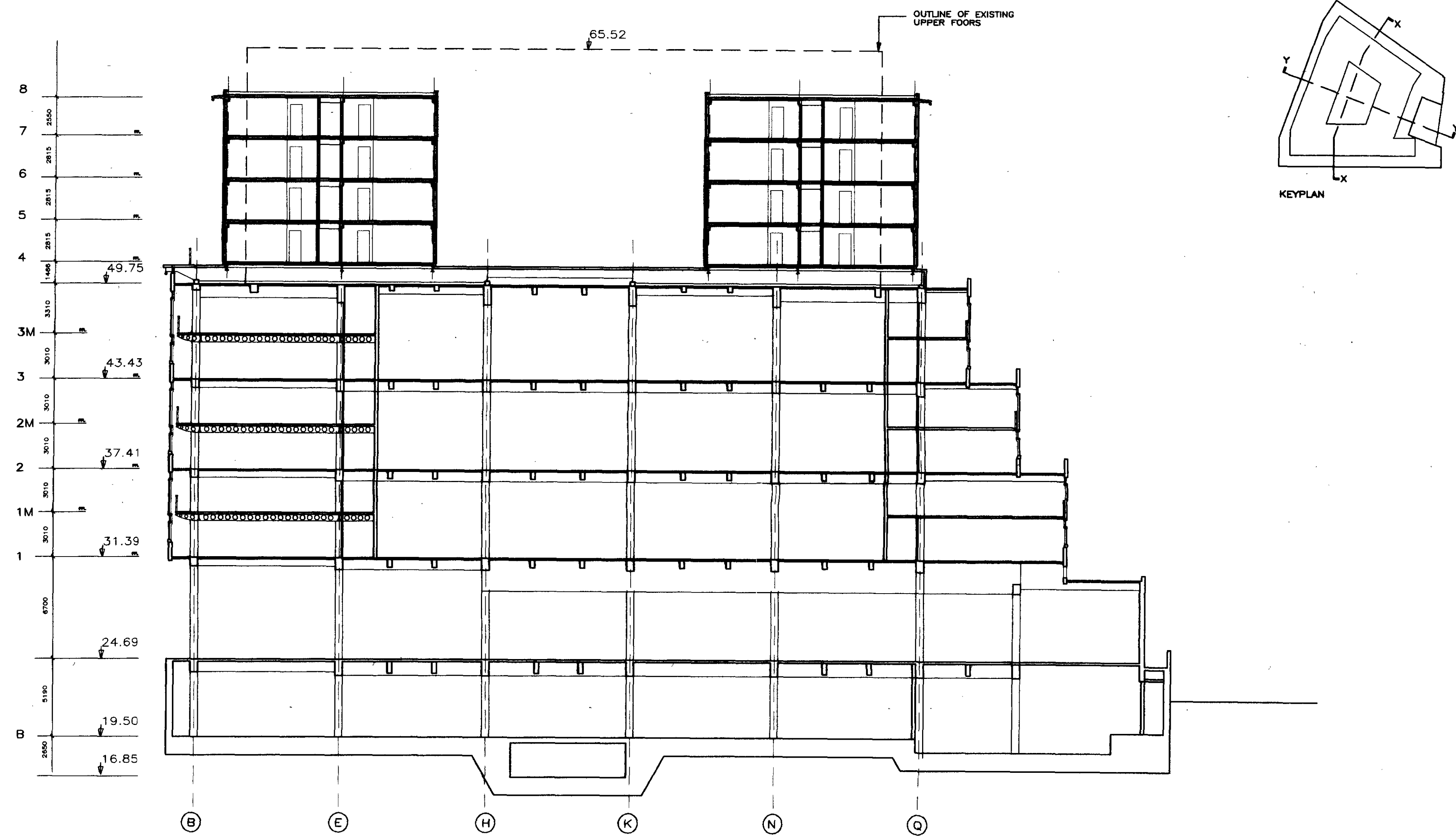
revision
A

TATE AND HINDLE DESIGN LIMITED
215 Oxford Street
London W1R 1AG
telephone 0171 287 2412 facsimile 0171 437 3148



DO NOT SCALE THIS DRAWING

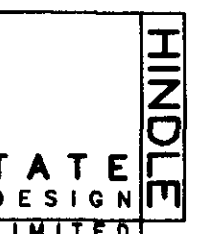
Contractors are to check all dimensions prior to commencement on site and notify the Architect of any errors, omissions or discrepancies.



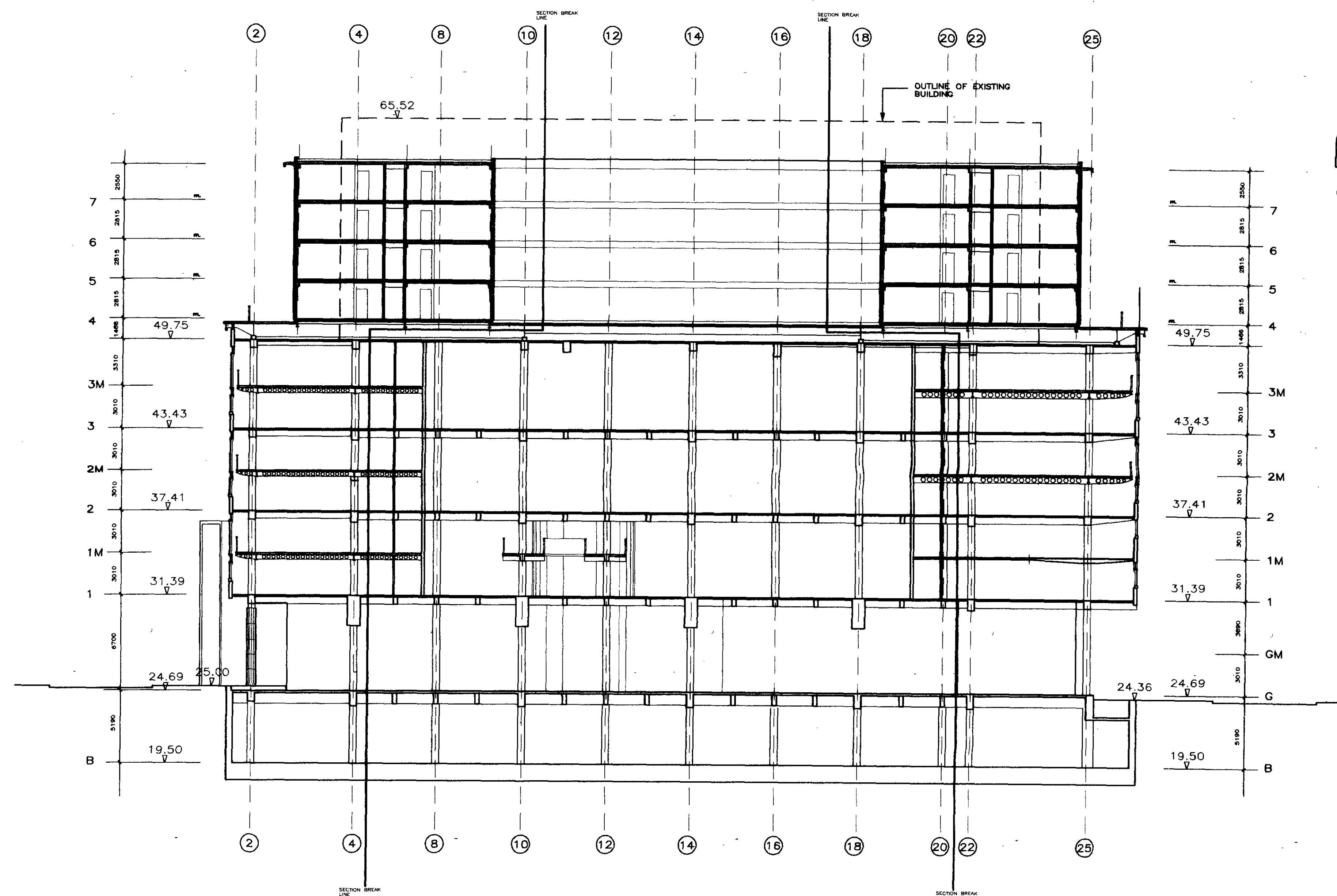
SECTION Y-Y

P9704327

rev	description	date
	PLANNING ISSUE	
client		
Parkes Incorporated		
project		
British Museum Study Centre 21-31 New Oxford Street London W1		
drawing		
Section Y-Y		
scale	drawn	date
1:200	JC	04.04.97
cod reference		
w:\726\model\sect4		
job	dwg	revision
726	PL(04)02	
TATE AND HINDLE DESIGN LIMITED Ramillies Buildings 215 Oxford Street London W1R 1AG		
telephone 0171 287 2412 fax 0171 437 3148		



DO NOT SCALE THIS DRAWING
Contractors are to check all dimensions prior to commencement on site and notify the Architect of any errors, omissions or discrepancies.



SECTION X-X

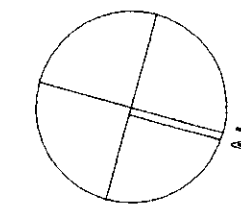
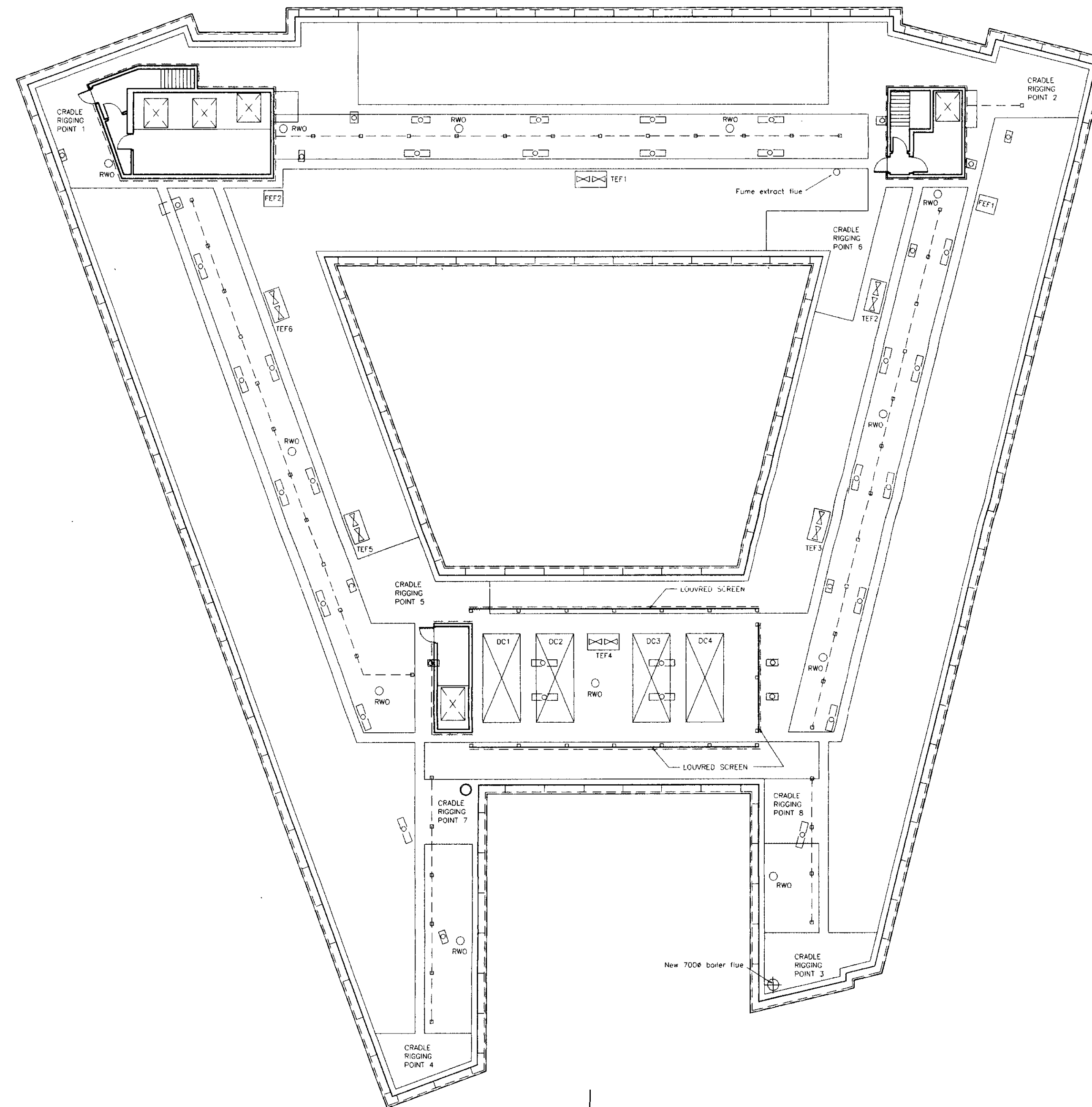
P9704327

rev. description date
PLANNING ISSUE
client
Parkes Incorporated
project
British Museum Study Centre
21-31 New Oxford Street
London W1
Section X-X

scale 1:200 drawn JC date 04.04.97
cad reference w:\726\model\sect3a
job 726 dwg PL(04)01 revision
TATE AND HINDLE DESIGN LIMITED
Ramillies Buildings
215 Oxford Street
London W1R 1AG
telephone 0171 287 2412 facsimile 0171 437 3148
HINDLE
TATE
DESIGN
LIMITED

DO NOT SCALE THIS DRAWING

Contractors are to check all dimensions prior to commencement on site and notify the Architect of any errors, omissions or discrepancies



B	Flues added	04.09.98
A	Orientation changed, hotel goods lift motor room added, A/C plant added, Cleaning rail added	17.08.98
rev	description	date

PLANNING ISSUE

client
Parkes Incorporated

project
**British Museum Study Centre
21-31 New Oxford Street
London W1**

drawing
**Roof Plan
Block Plan
Study Centre**

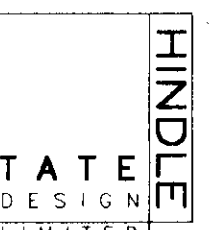
scale	drawn	date
1:200	JC	04.04.97

cod reference
w:\726\model\plan\roof

job	dwg	revision
726	PL(03)11	B

TATE AND HINDLE DESIGN LIMITED
Ramillies Buildings
215 Oxford Street
London W1R 1AG

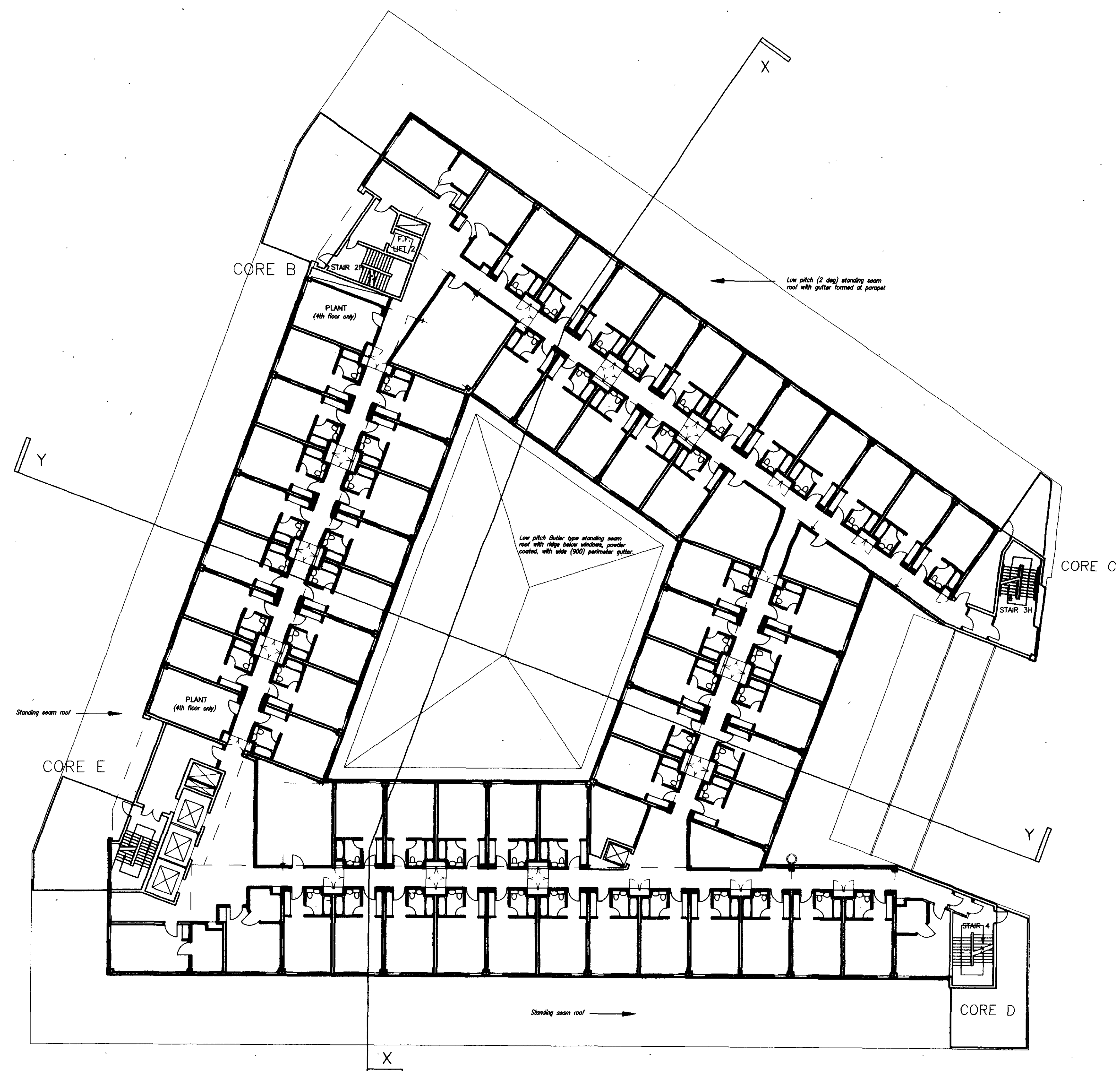
telephone 0171 287 2412 facsimile 0171 437 3148



P9704327R3

DO NOT SCALE THIS DRAWING

Contractors are to check all dimensions prior to commencement on site and notify the Architect of any errors, omissions or discrepancies.

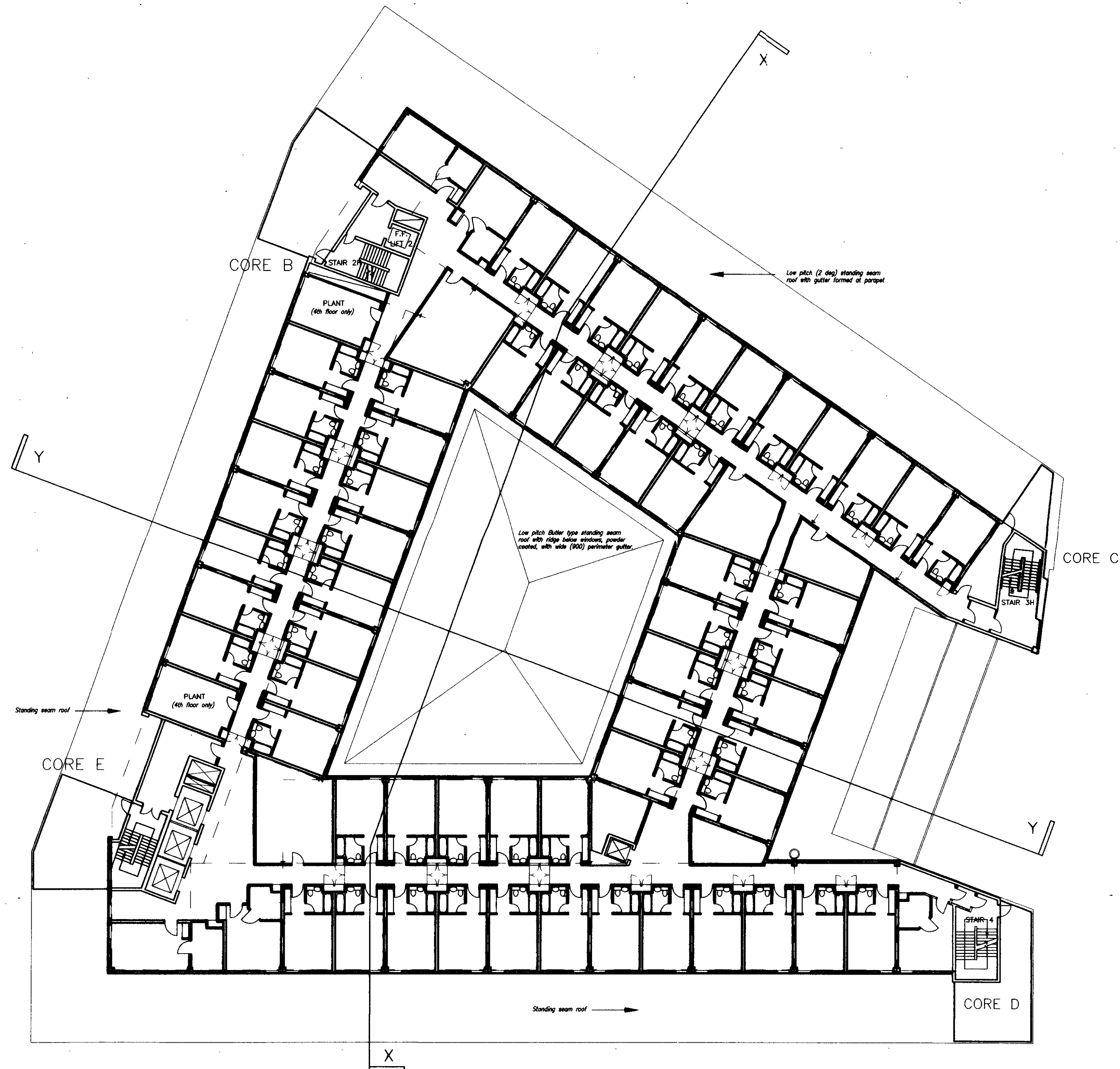


P9704327

rev	description	date
	PLANNING ISSUE	
client	Parkes Incorporated	
project	British Museum Study Centre 21-31 New Oxford Street London W1	
drawing	Seventh Floor Block Plan Study Centre	
scale	drawn	date
1:200	JC	04.04.97
old reference	w:\726\model\plan\proposed2\seventh	
job	dwg	revision
726	PL(03)10	
TATE AND HINDLE DESIGN LIMITED Ramillies Buildings 215 Oxford Street London W1R 1AG Telephone 0171 267 2412 Facsimile 0171 437 3148		
HINDLE TATE DESIGN LIMITED		

DO NOT SCALE THIS DRAWING

Contractors are to check all dimensions prior to commencement on site and notify the Architect of any errors, omissions or discrepancies.

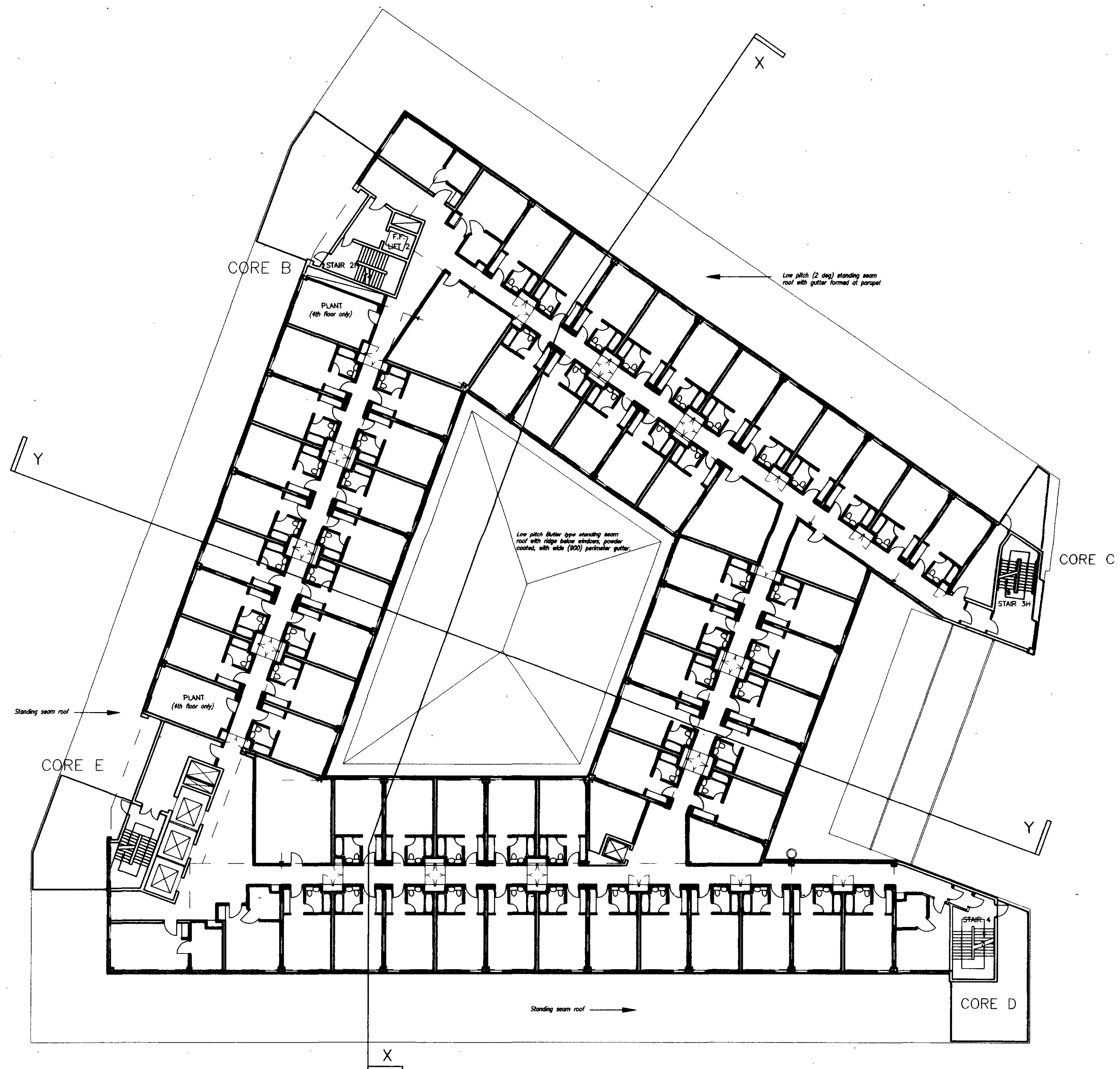


P9704327

rev	description	date
1	PLANNING ISSUE	
client		
Parkes Incorporated		
project		
British Museum Study Centre 21-31 New Oxford Street London W1		
drawing		
Fifth & Sixth Floors Block Plan Study Centre		
scale	drawn	date
1:200	JC	04.04.97
ref reference		
w:\726\model\plan\proposed2\5th & 6th		
job	dep	revision
726	PL(03)09	
TATE AND HINDLE DESIGN LIMITED Ramillies Buildings 215 Oxford Street London W1R 1AG		
Telephone 0171 287 2412 Facsimile 0171 437 3148		
TATE DESIGN LIMITED		

DO NOT SCALE THIS DRAWING

Contractors are to check all dimensions prior to commencement on site and notify the Architect of any errors, omissions or discrepancies.



P9704327

rev description date
PLANNING ISSUE

client
Parkes Incorporated

project
British Museum Study Centre
21-31 New Oxford Street
London W1

drawing
Fourth Floor
Block Plan
Study Centre

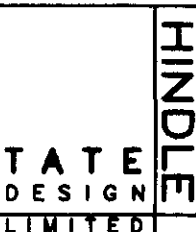
scale 1:200 drawn JC date 04.04.97

coord reference
w:\726\model\plan\proposed2\fourth

job 726 dwg PL(03)08 revision

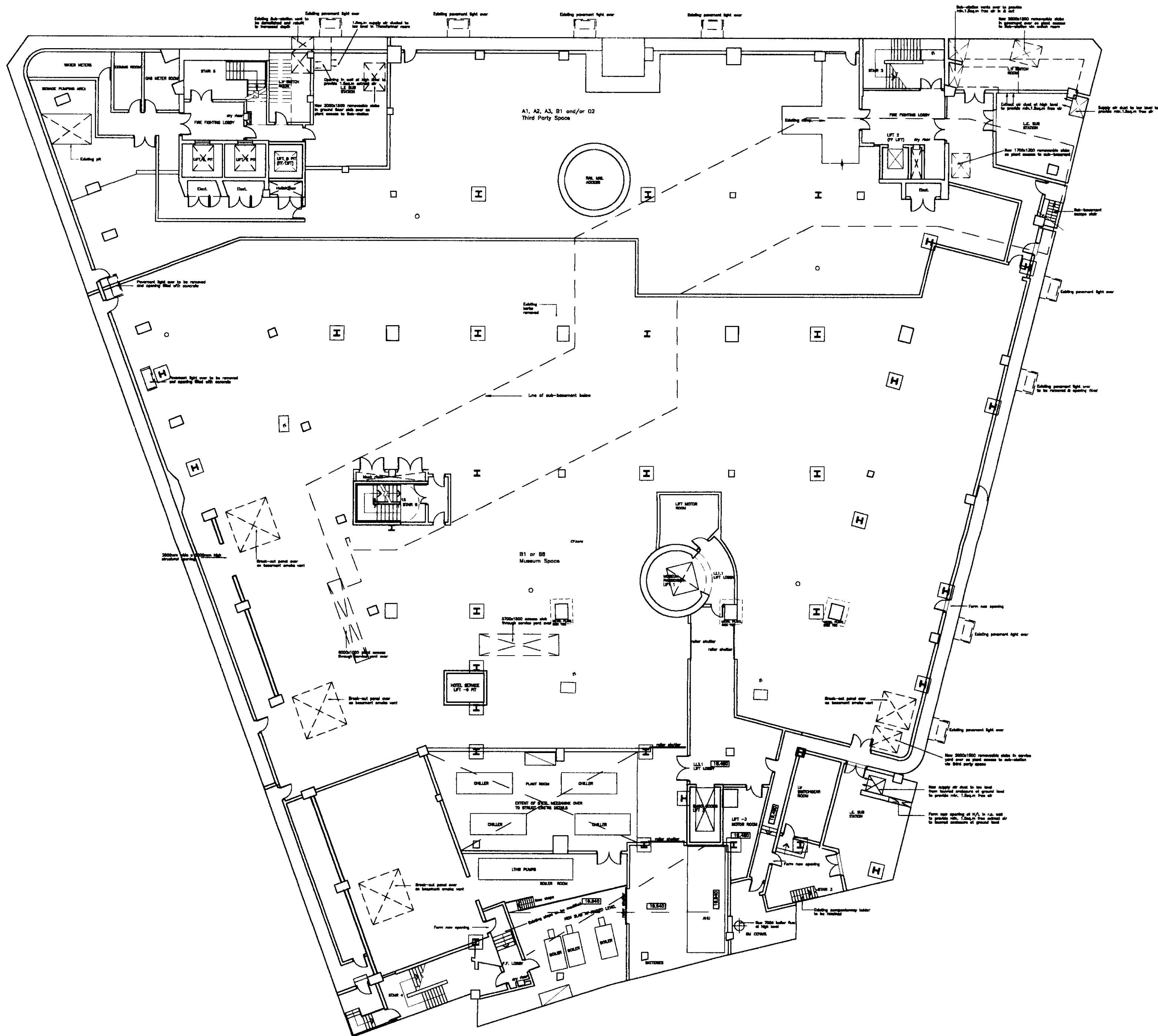
TATE AND HINDLE DESIGN LIMITED
Ramillies Buildings
215 Oxford Street
London W1R 1AG

telephone 0171 287 2412 facsimile 0171 437 3148



DO NOT SCALE THIS DRAWING

Contractors are to check all dimensions prior to commencement on site and notify the Architect of any errors, omissions or discrepancies.



- D Lift 1 and lift 3 linked. Plant room enlarged to the east. Boundary to museum/third party space redefined. Perimeter ventilation chamber to be introduced (existing retained). 18.01.99
- C Parking removed, car lift replaced with large goods lift, central escape stair added, modifications to stairs at SW, SE & NE. General enlargement of ET23 Boat Store, and large object store. 17.08.98
- B Previous issue not to scale. 10.06.97
- A Block areas defined. 03.06.97
- rev description date

PLANNING ISSUE

client
Parkes Incorporated

project
British Museum Study Centre
21-31 New Oxford Street
London W1

drawing
Basement
Block Plan

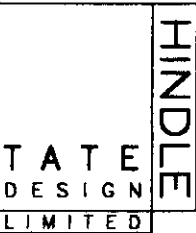
scale 1:200 drawn JC date 26.11.97

coll reference 726/model/plan/basement

job 726 dwg PL(03)0B revision D

TATE AND HINDLE DESIGN LIMITED
Remittles Buildings
215 Oxford Street
London W1R 1AG

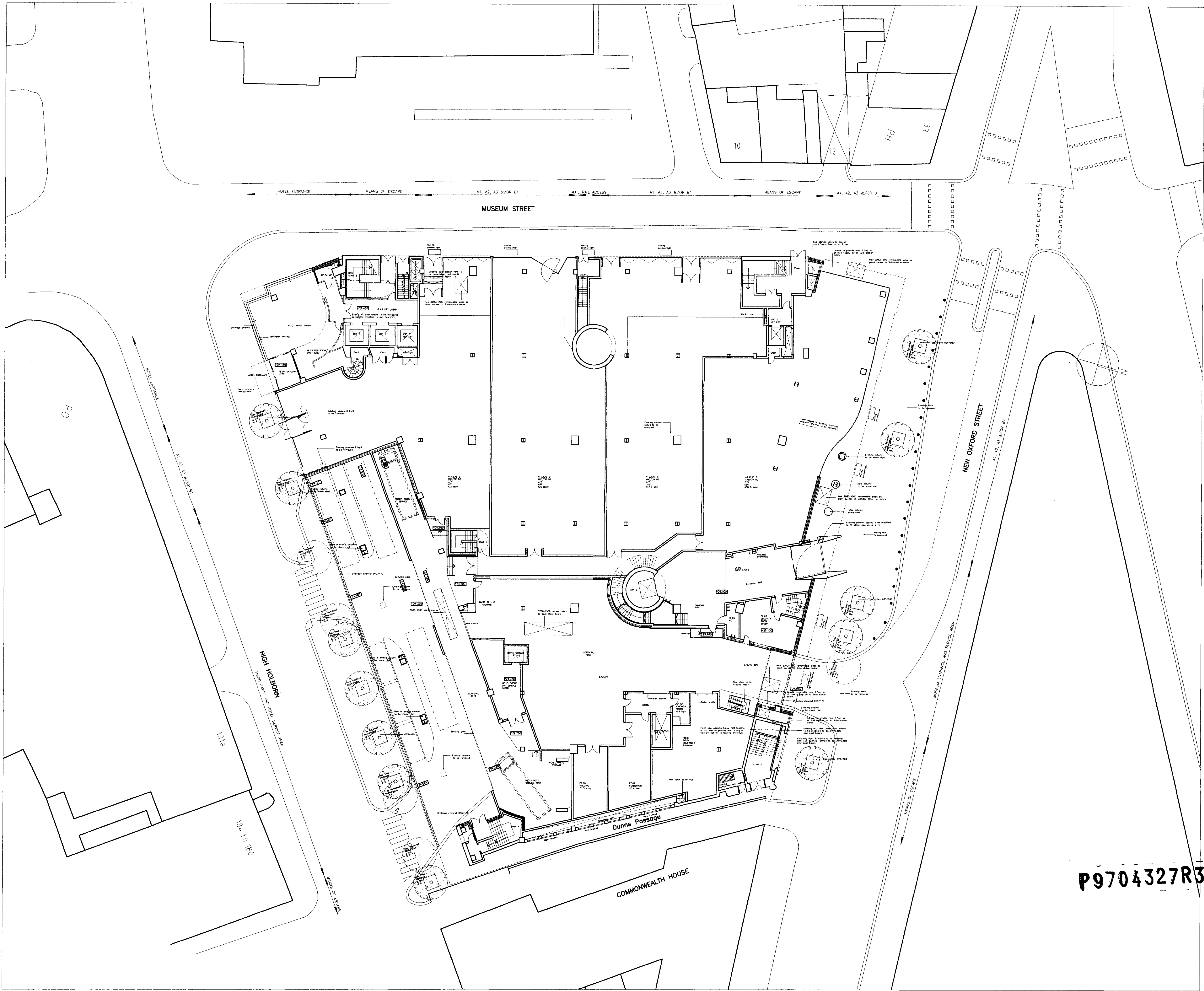
telephone 0171 287 2412 facsimile 0171 437 3148



DO NOT SCALE THIS DRAWING

Contractors are to check all dimensions prior to commencement on site and notify the Architect of any errors, omissions or discrepancies.

For all off-site works refer to Denis Wilson Partnership drawings no: 97119/1A & 97119/2.



H	Taxi drop-off points added	04.09.98
G	Orientation of plan changed Hotel service area amended Shutter to museum loading bay added Museum goods lift moved & dirty items rooms added. Escape corridor to third party areas added, exit from mail rail added. Hotel entrance at SW corner modified and glazing line changed, canopy reduced. Traffic and pavement lines in New Oxford street amended.	17.08.98
F	TPS and service area amended	20.10.97
E	Ground mezzanine to TPS indicated. Hotel service area and refuse stores amended.	29.07.97
D	Third party service area enlarged Existing trees shown	17.06.97
C	Bus line alignments to New Oxford Street amended	11.06.97
B	Existing screen wall to High Holborn elevation indicated. Trees indicated.	05.06.97
A	Coach bay and service parking amended.	02.06.97

PLANNING ISSUE

client
Parkes Incorporated

project
**British Museum Study Centre
21-31 New Oxford Street
London W1**

drawing
**Ground Floor
Block Plan
Study Centre**

scale 1:200	drawn JC	date 04.04.97
cad reference w:\726\Planning\03\Plans\A1\PL-Ground	job 726	revision PL(03)00 H
TATE AND HINDLE DESIGN LIMITED Ramillies Buildings 215 Oxford Street London W1R 1AG telephone 0171 287 2412 facsimile 0171 437 3148		

