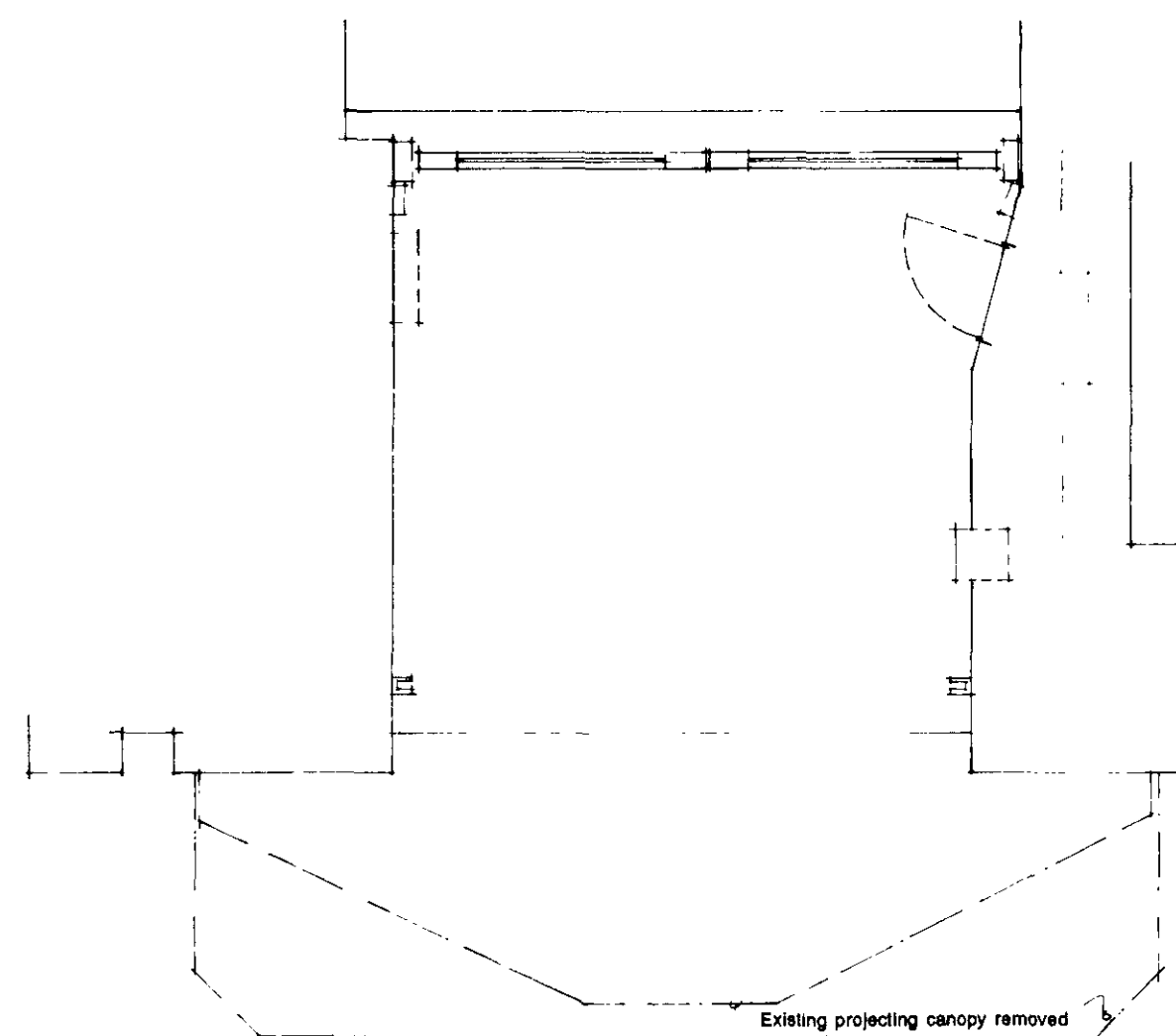
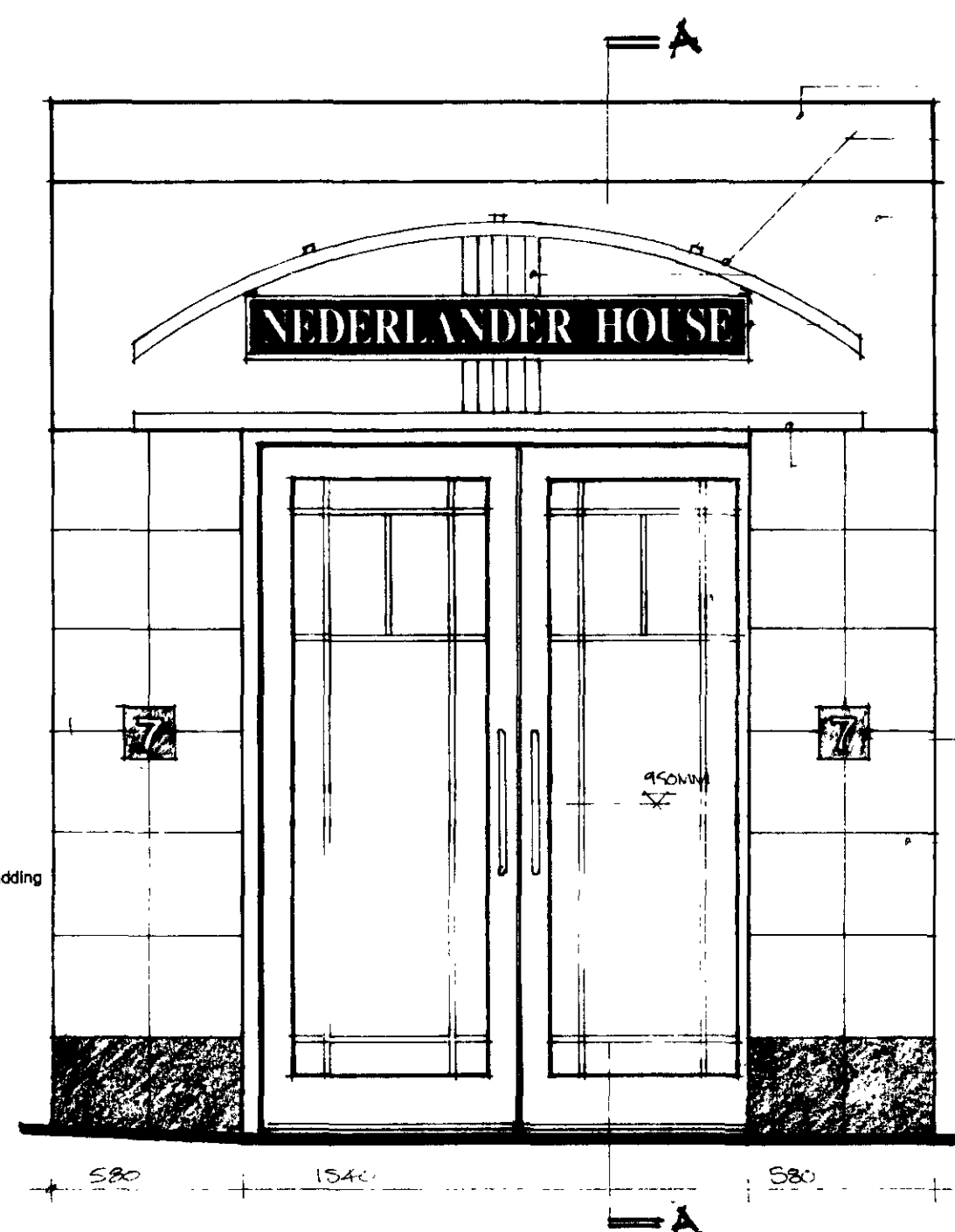


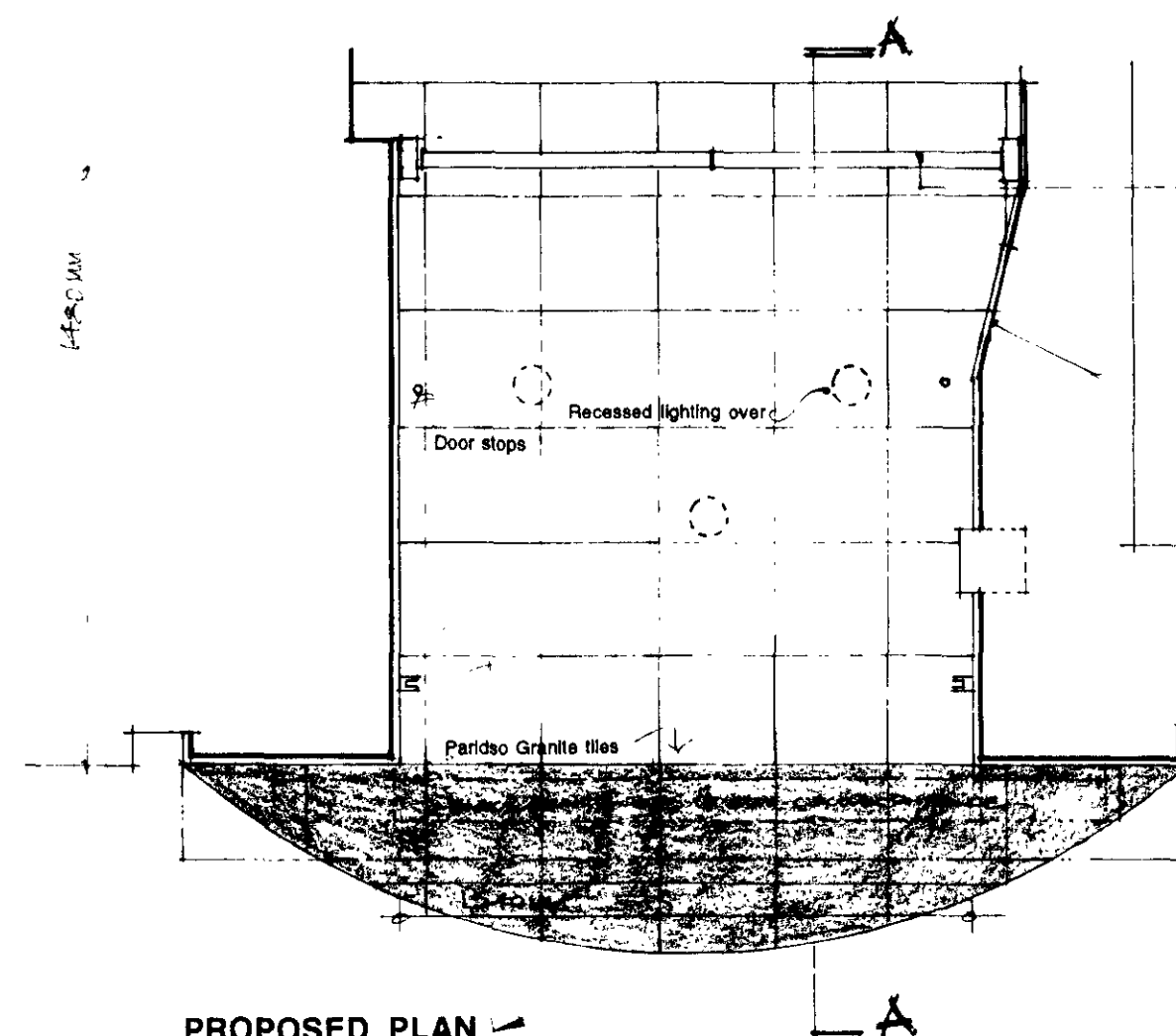
EXISTING ELEVATION



EXISTING PLAN
ENTRANCE DETAILS

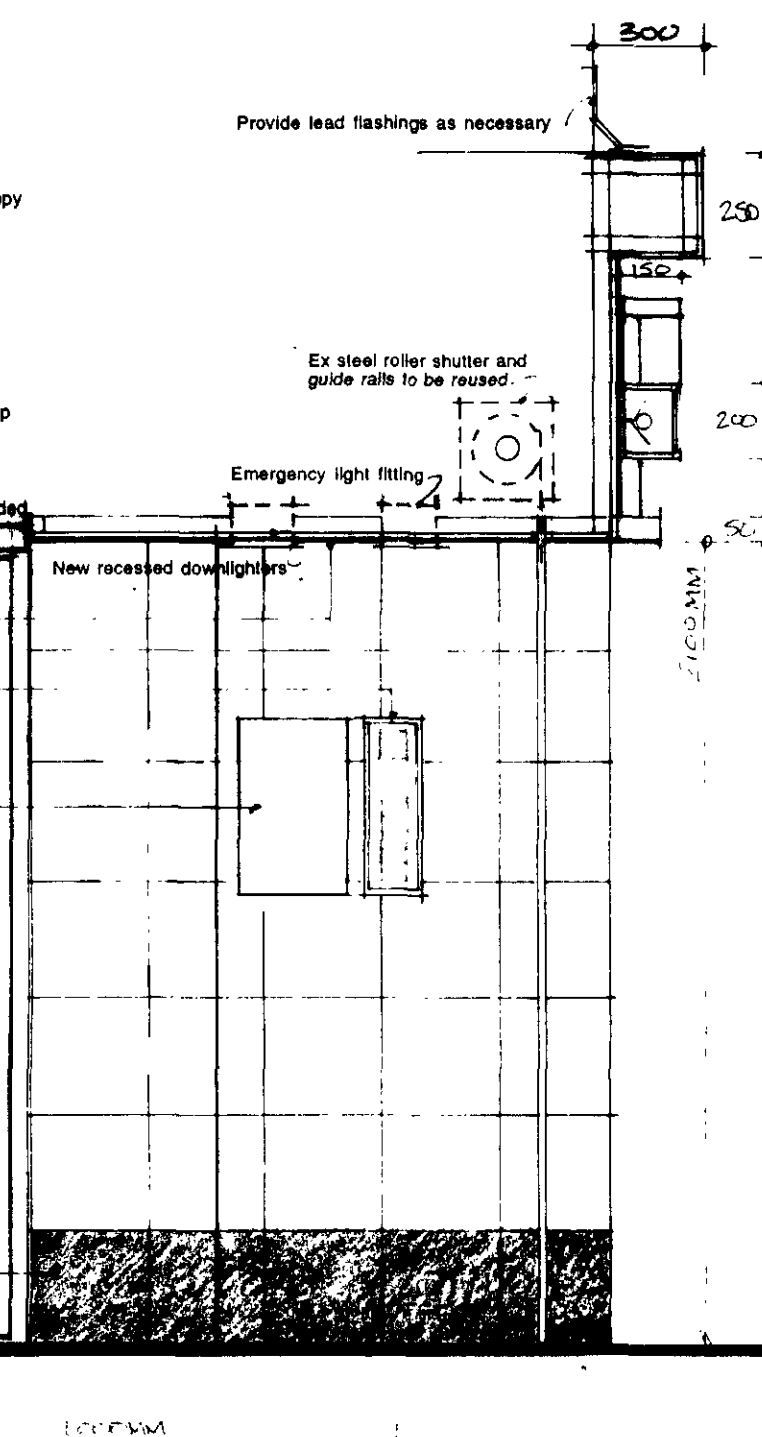


PROPOSED ELEVATION



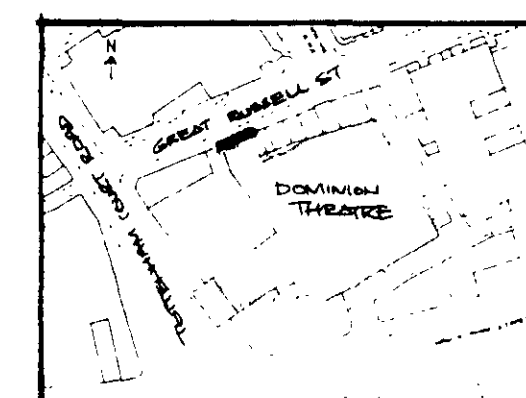
PROPOSED PLAN

- Stainless Steel faced canopy
- Form 50mm x 175mm S/S curved canopy
- 940mm internal radius fixed to fascia with 3No. gold S/S collars and additional angle fixings to sign box
- Fascia panel formed from 19mm ext. ply backing with S/S sheet facing fixed with round head finishing screws
- 50mm dia. Gold S/S tubes fixed to fascia spaced at 100mm c/s.
- Illuminated sign box: 1540 x 200 x 150mm deep Formed from Ext quality ply faced with gold finish S/S sheet. Face panel to be S/S plate finish with cut out letters to read 'NEDERLANDER HOUSE' in Times Roman extended with opal acrylic backing Provide access panel for fluorescent tube lighting
- 50 x 100mm edge trim to head of recess
- 19mm ext. qty MDF soffit board paint finish Colour 'Cream'
- New video entryphone
- Provide 960 x 480mm S/S access panel to match existing opening
- New 300 x 450mm S/S sign plate with slatted interchangeable name plates
- 150mm sq. black granite tile with S/S number plate attached
- 305 x 305 x 10mm 'Paradiso' granite tiles with contrasting black grouting
- 305 x 305 x 10mm Black granite tiles with black grouting to skirting base

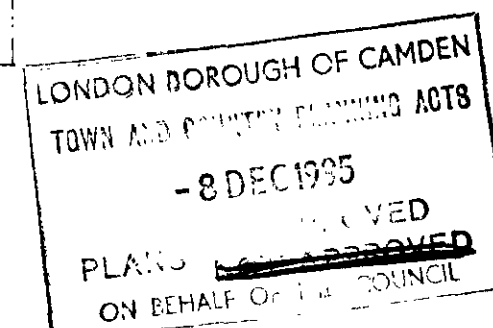


- 792 x 2040 x 44mm GRS ANCHOR ALUMINIUM GUATE
- DOOR WITH 10MM FRAMES GLASS PANEL
- AC 1100 CATEL
- 450MM 3000 FINISH PULLER BAR

Box out existing access panel opening



LOCATION PLAN Scale: 1:1250 approx.



950 338

REV/B 20.10.95 DOOR ANCHORS
REV/A 17.10.95 ACCESS PANEL REMOVED
BLACK GRANITE TILE FINISH

AMANDA FLETCHER
INTERIORS

&
Architectural Illustration
MSA1

P.O. BOX 558 LONDON W2 3RD
Tel: 071 724 0306 Fax: 071 402 8870

Do not scale from this drawing.

All dimensions and conditions to be verified on site by contractor and any discrepancies must be reported to Amanda Fletcher.

Copyright of this drawing is reserved by Amanda Fletcher and is issued on the condition that it will not be copied, reproduced, altered or disclosed in whole or in part to any third party without the consent in writing of Amanda Fletcher

Client: Apollo Leisure
Project: Nederlander House

Description: Proposed Entrance Details

Drawn: STM

Date: October 1995

Scale: 1:20 / 1:1250

Drawing No.: 1266 / 02