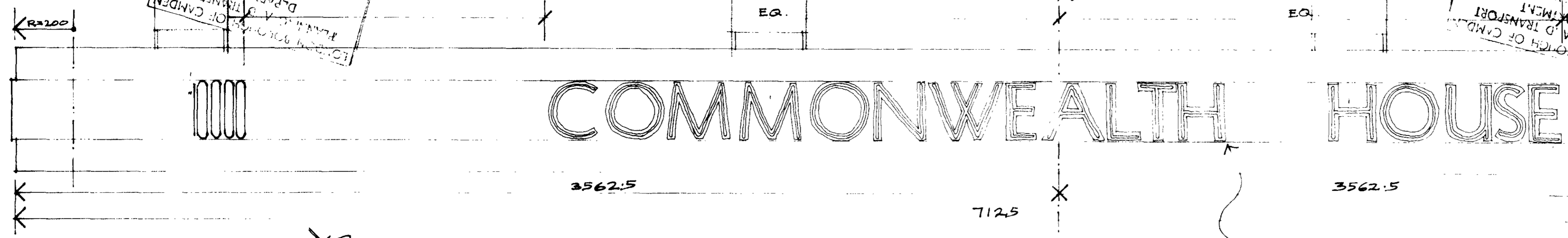
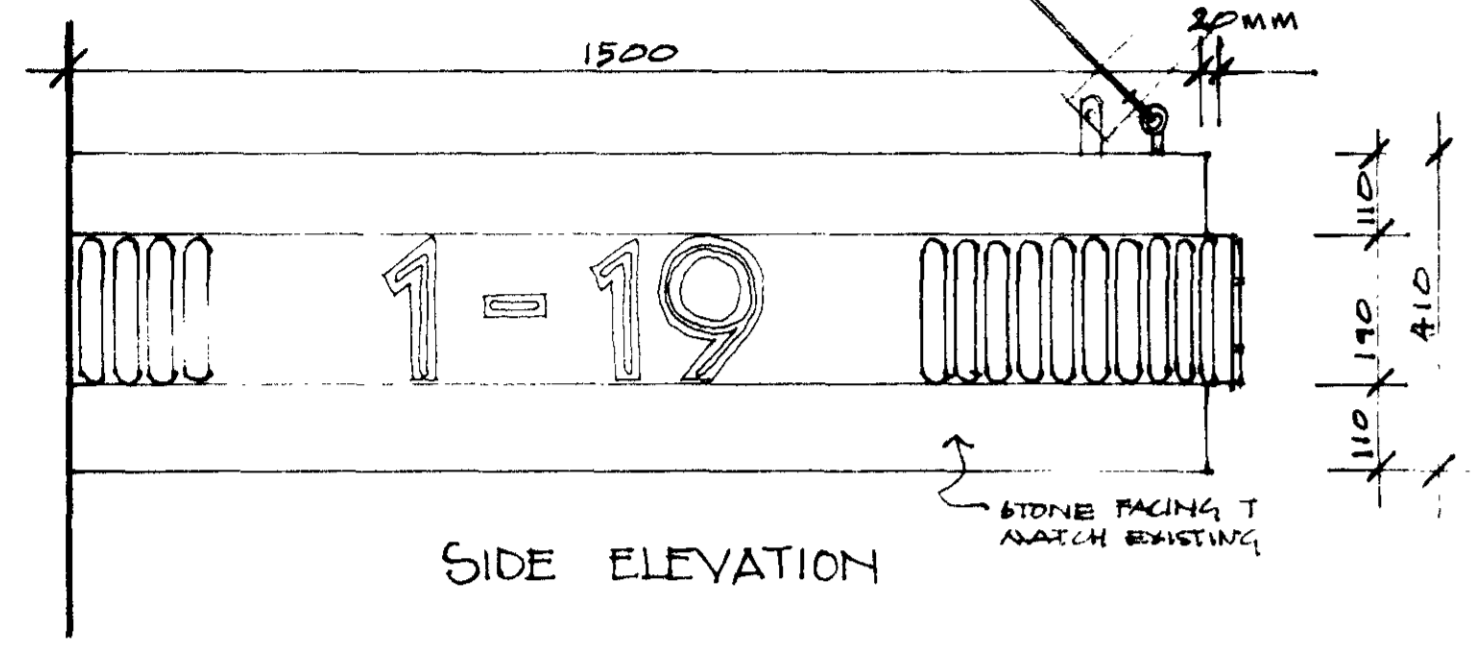


WEST ENTRANCE CANOPY SIGNS



FRONT ELEVATION



SIDE ELEVATION

GENERAL NOTES

- \* STRUCTURAL SUPPORT SYSTEM FOR WEST ENTRANCE CANOPY TO STRUCTURAL ENGINEERS SPECIFICATION.
- \* STEEL BULLNOSE FASCIA BY SIGN MANUFACTURERS.

All dimensions and levels are to be checked on site. Any discrepancies shall be immediately notified to the Architect in writing. Scaled dimensions are not to be used.

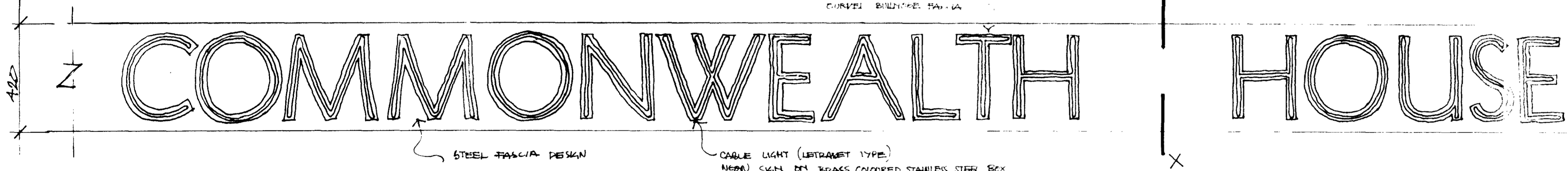
© ELSWORTH SYKES PARTNERSHIP

SCALE 1:10

Rev	By	Chkd	REVISION	AI No.	Date

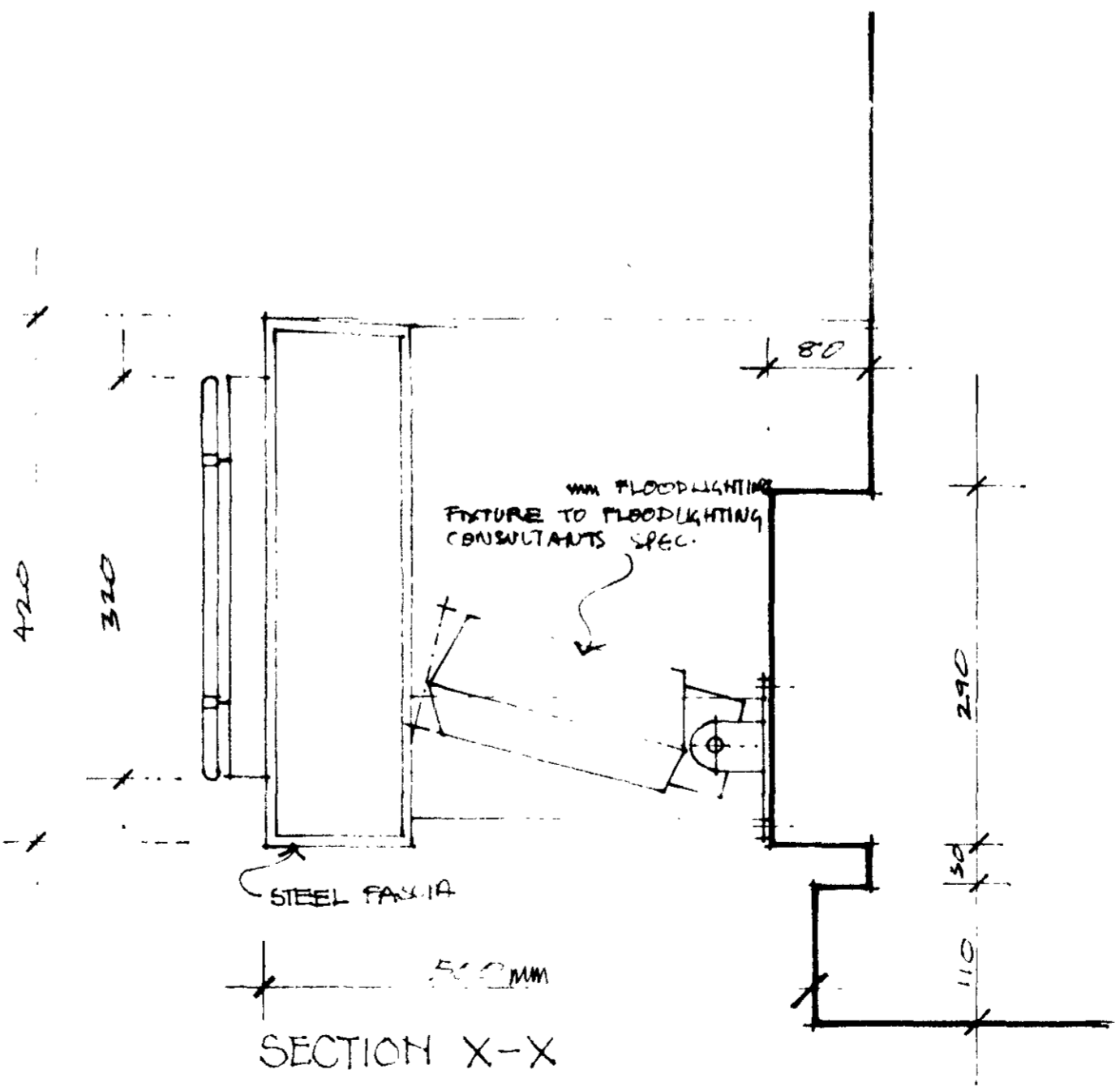
TP9100426 R1

BULL-NOSE SIGN



BRONZE COLOURED STAINLESS STEEL CABLE LIGHT STYLE LETTERING MOUNTED ON FASCIA

STEEL FASCIA PROJECTED 500MM FROM FACE OF WALL AND COLOURED TO MATCH STONE COLOUR.



SECTION X-X

LONDON BOROUGH OF CROYDON  
 PLANNING DEPARTMENT  
 16 JUL 1991  
 PLANS APPROVED  
 ON BEHALF OF THE COUNCIL

PEARL ASSURANCE PLC

PROJECT  
COMMONWEALTH HOUSE

TITLE  
CANOPY & BULLNOSE SIGNS

Project no. 90352	Dwg no. SK 10	Revision
Drawn ABD	Checked	Date 26/4/81 Scale 1:10

ELSWORTH SYKES PARTNERSHIP

ARCHITECTS PLANNING CONSULTANTS AND ARCHITECTS

27 Queen Anne Street London W1M 9EB  
Tel: 071 580 5886 Te: 298749 F: 071 572 9547

Elsworth Sykes Partnership Limited, Registered in England No. 100842 Registered at 27 Queen Anne Street W1M 9EB