

ALLOW EXTRA OVER PRICE FOR
NEON SIGN "REHO TRAVEL"

illuminated sign
as existing
new slate grey
'panatrim'

75mm tube with
'weldmesh' in frame,
extruded aluminium
tube bolted back
to frame

hewi handle
lock plate
letter plate

slate grey anodised
aluminium framing

cross reeded glass
blocks 190x190x100
two skins on r.i.w.
treated base

SCREEN PLAY
IN OAK FRAMES
FIXED TO ALUMINUM
FRAME WITH
CUPS & SCREWS
TO ALLOW FOR
LATER REMOVAL

dpt under cill

ALLOW FOR
MAKING GOOD OF
ELECTRICAL CAVITY
HERE

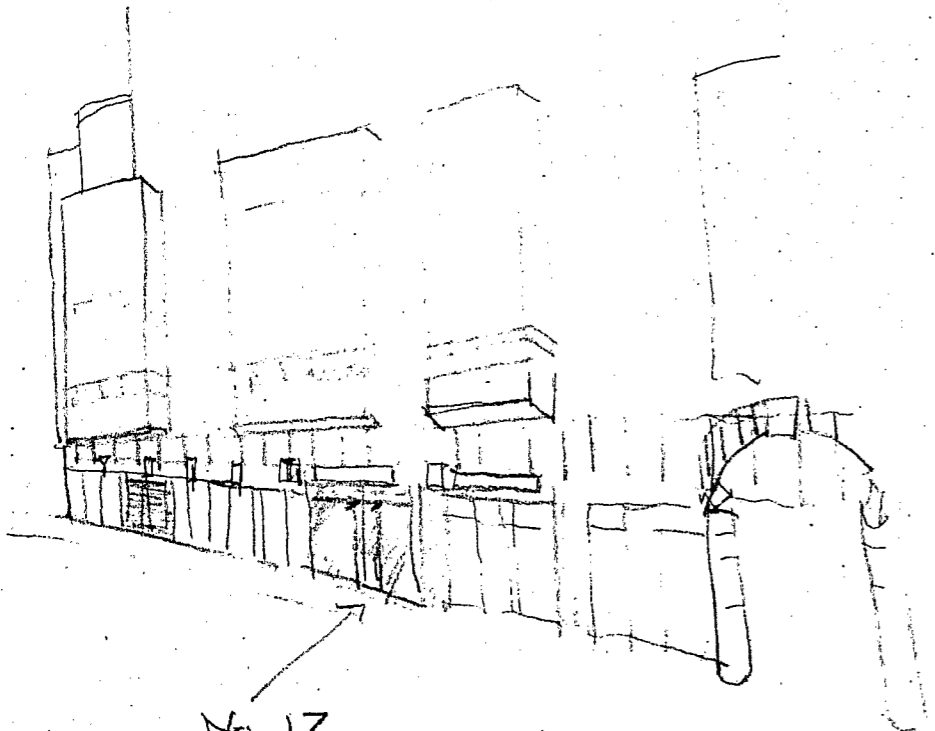
104/17/A/

TP 8401732

REHO

FRONT ELEVATION	014 01
	1:20
	15.9.84

ashlar face
existing



No. 17
REHO
TRAVEL

VIEW DOWN
NEW OXFORD STREET