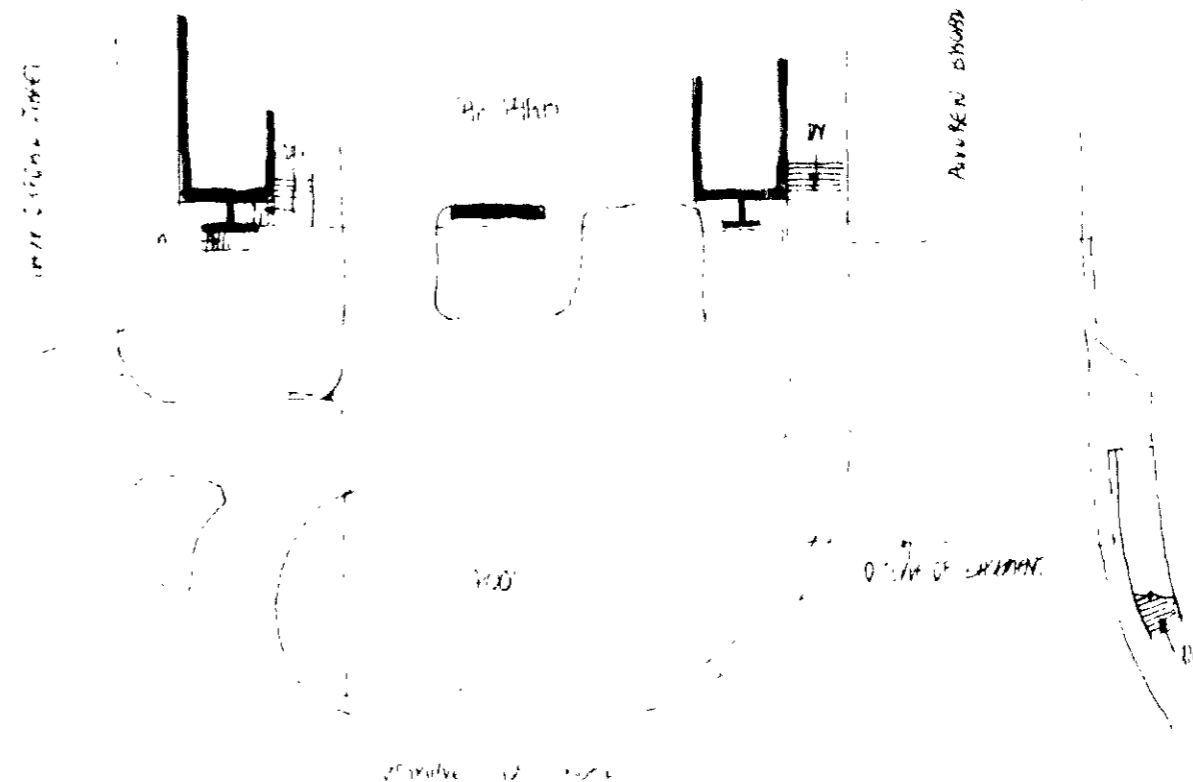


SUB BASEMENT PLAN

CTP/P13, 6X/A/36410



LOCATION PLAN 1:500

PROPOSED PRIVATE
SNOOGER CLUB & GYMNASIUM
CENTRE POINT

LEISURE PLAY LIMITED

LONDON BOROUGH OF HENRY JONES F.R.I.C.S.
TOWN AND COUNTRY PLANNING
2 AUG 1985
PLANS NOT APPROVED
ON BEHALF OF THE COUNCIL