

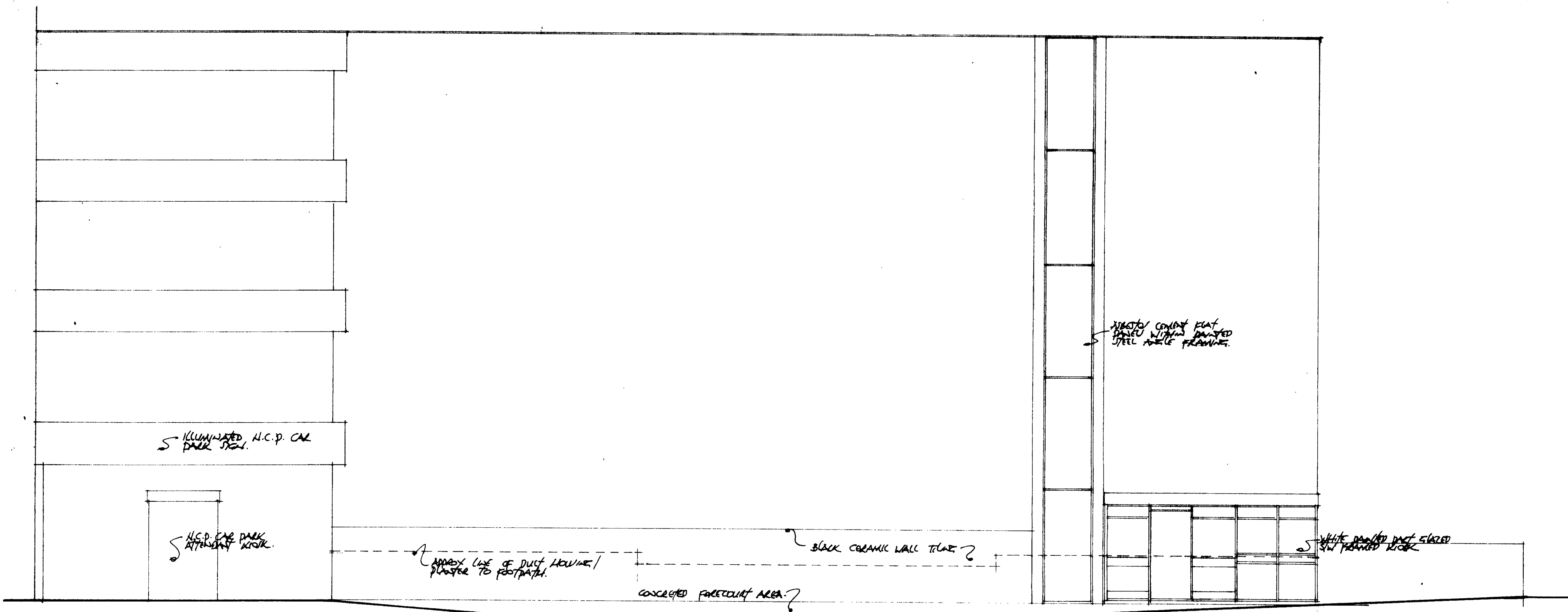
LONDON BOROUGH OF CAMDEN
TOWN AND COUNCIL PLANNING ACTS
18 JUN 1992
PLANS APPROVED
ON BEHALF OF THE COUNCIL

22 JUN 1992
RECEIVED

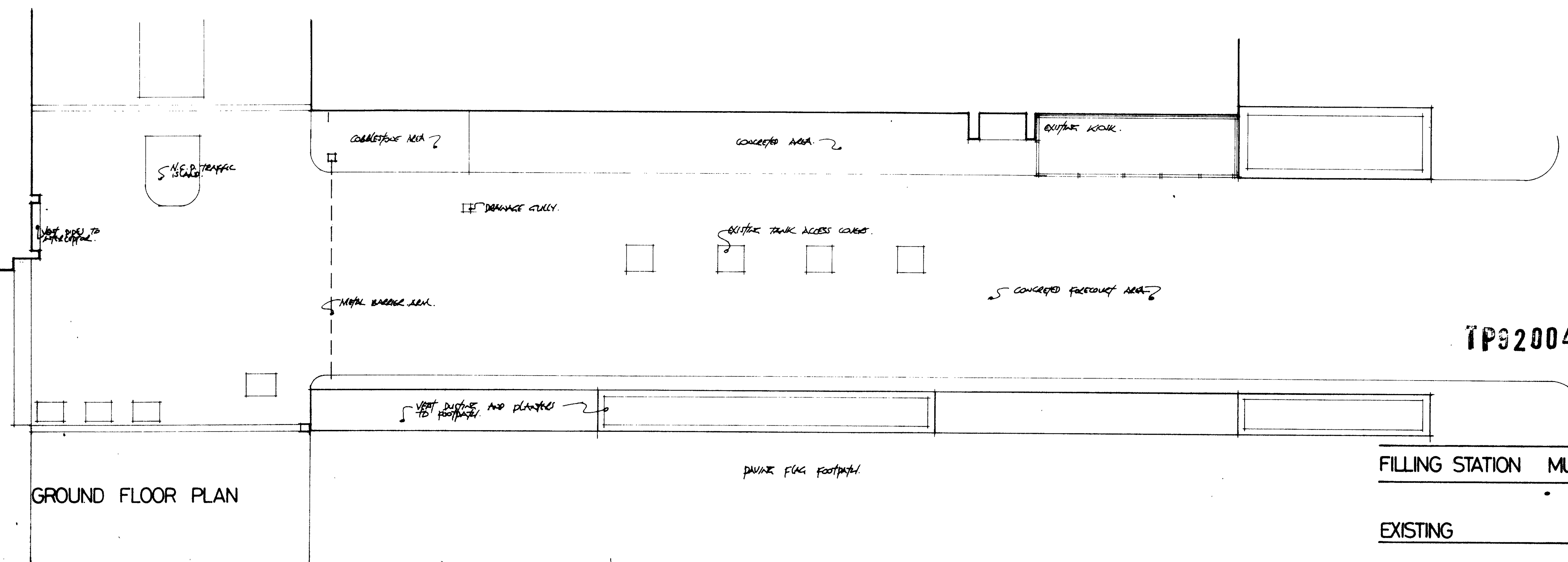
REV. B MAY 92 HANNA KULLINSON - LATEST POINT.
REV. A APRIL 92 GEORGINA MORRIS (REVISED)

FILLING STATION MUSEUM STREET WC1
SKETCH PROPOSAL
ELEVATION / SECTION

1:50
APRIL 1992
JM.492.103



ELEVATION TO MUSEUM STREET



GROUND FLOOR PLAN

LONDON BOROUGH OF CAMDEN
TOWN AND COUNTRY PLANNING ACTS
18 JUN 1992
PLANS APPROVED
ON BEHALF OF THE COUNCIL

TP9200404

FILLING STATION MUSEUM STREET WC1
1:50
APRIL 1992
EXISTING JM.492.101

