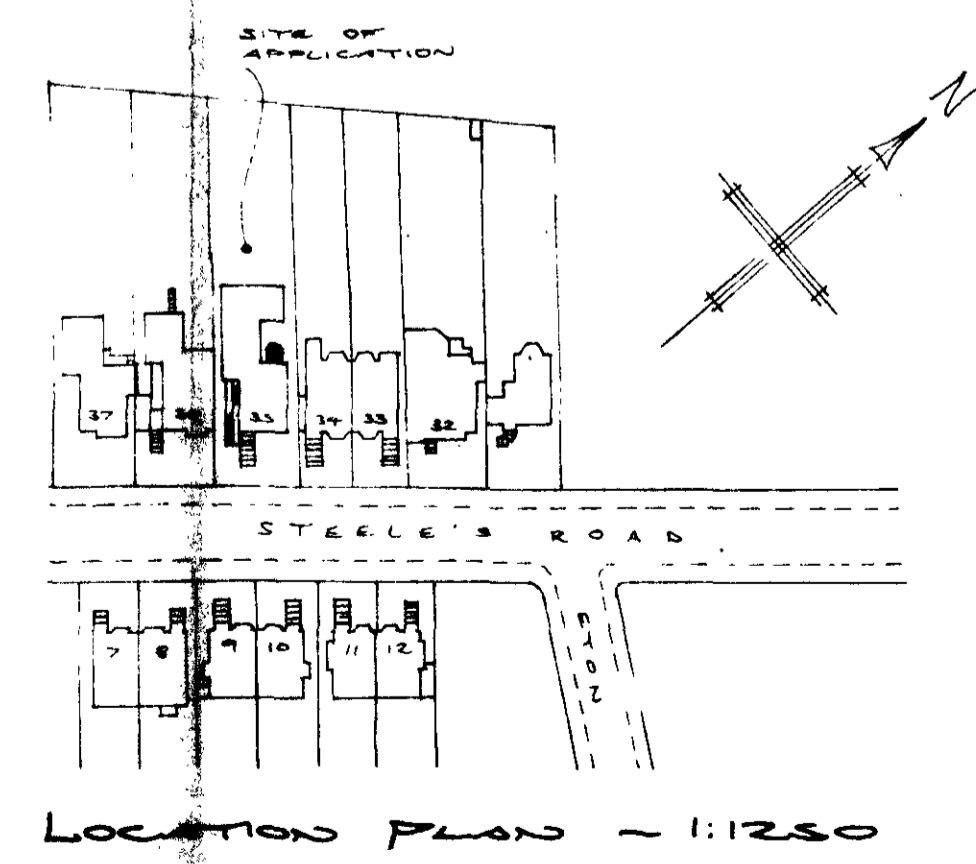
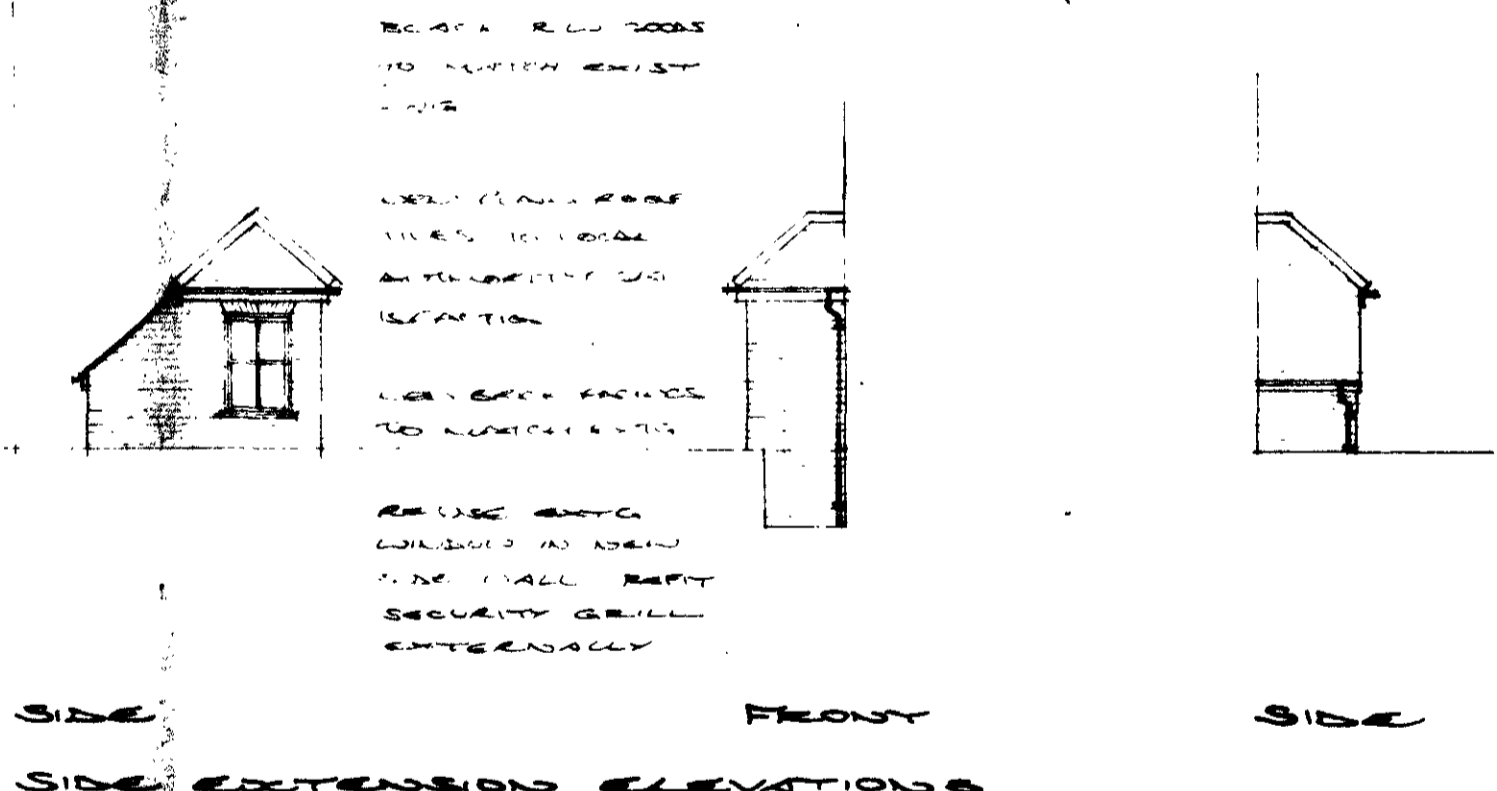
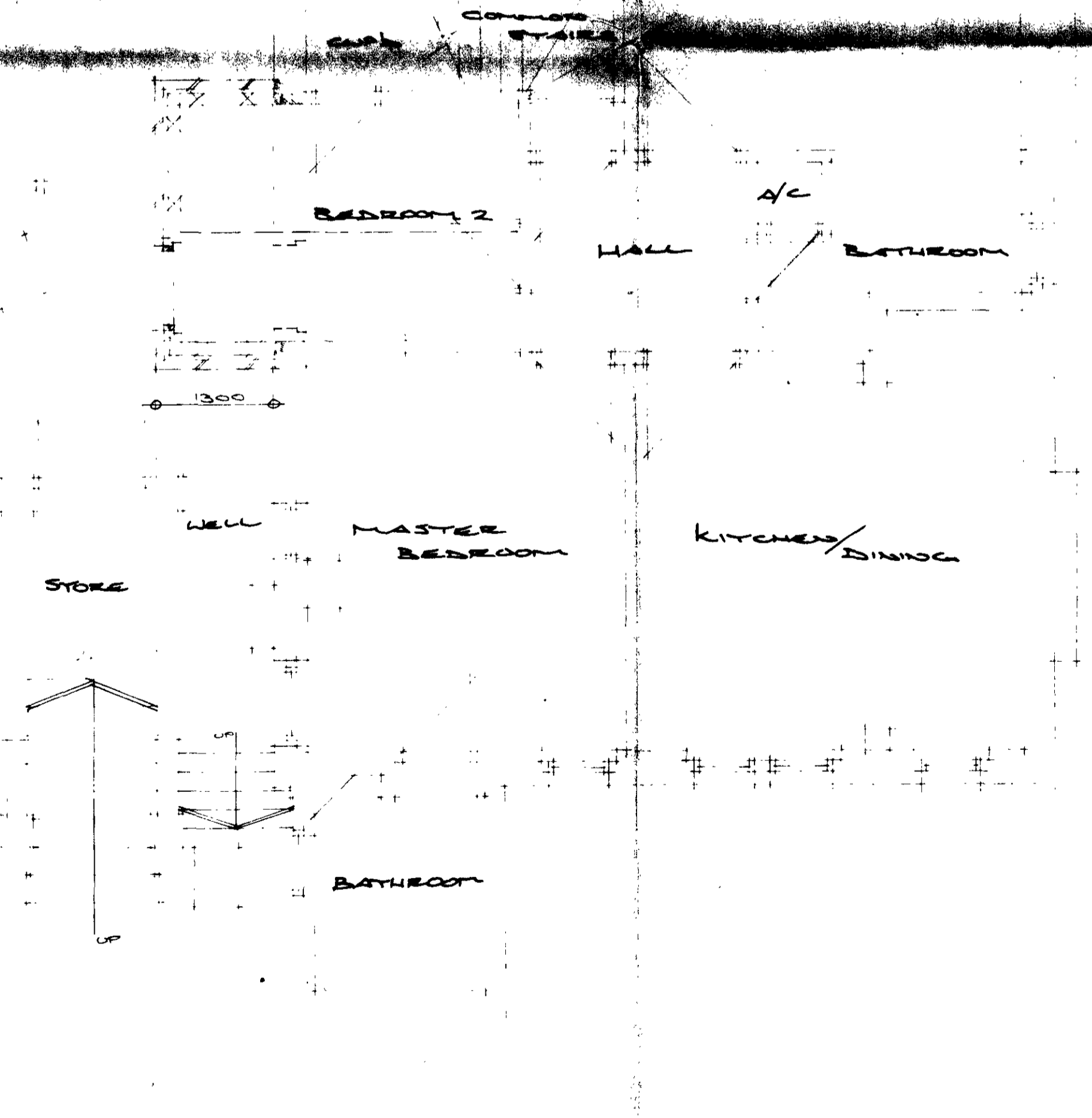
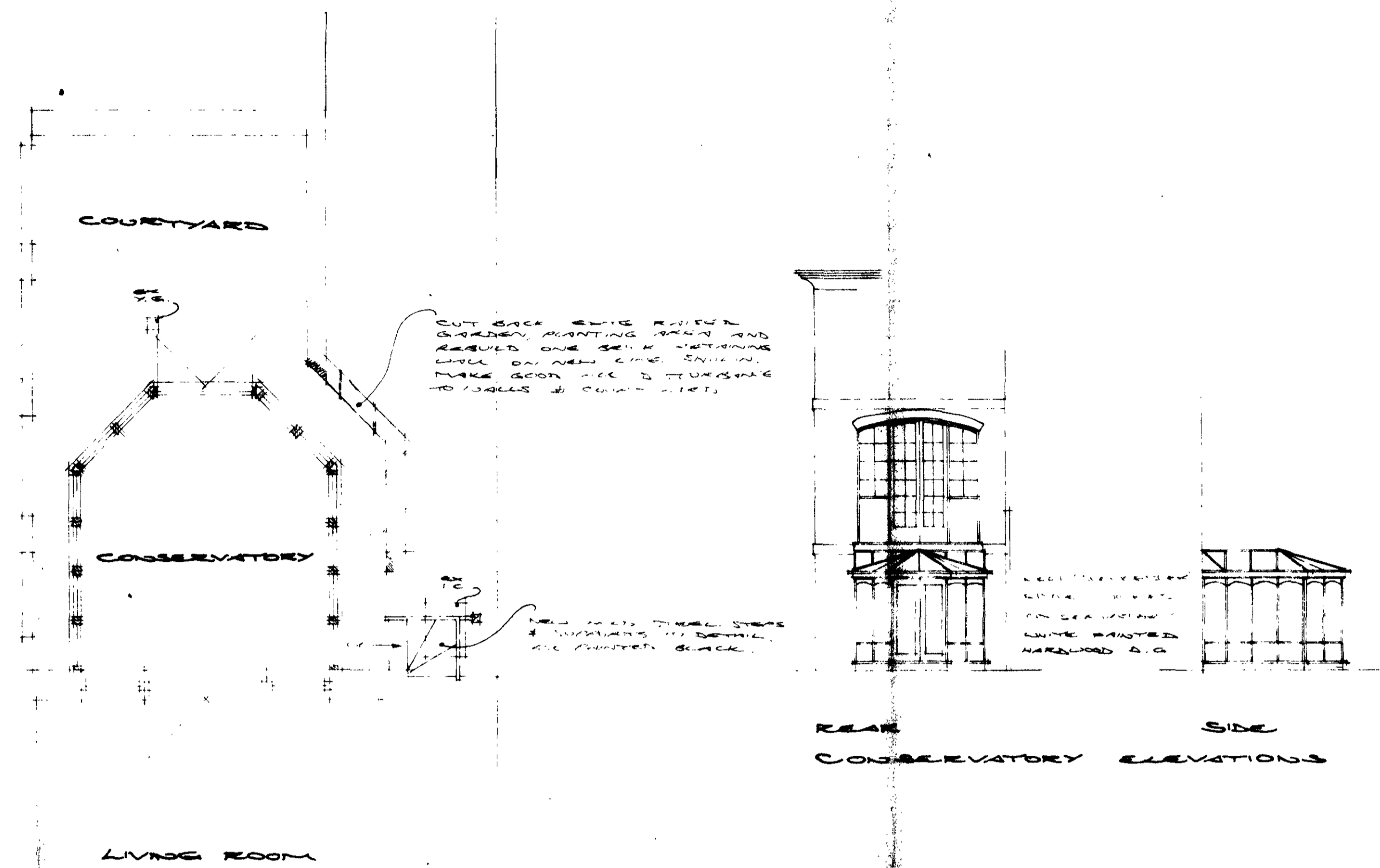


RECEIVED  
 26 FEB 1989  
 DEPARTMENT  
 PLANNING AND TRANSPORT  
 LONDON BOROUGH OF CROYDON

RECEIVED  
 3 MAY 1989  
 DEPARTMENT  
 PLANNING AND TRANSPORT  
 LONDON BOROUGH OF CROYDON



1P8905105

REVISIONS

ANTHONY R. COVEY SURVEYOR  
 KINGSLWOOD  
 16 BURLWOOD AVENUE  
 EASTCOTE PINNER HAS 222  
 TELEPHONE: 01-346 3369

PROPOSED SINGLE STOREY  
 SIDE EXTENSION AND  
 REAR CONSERVATORY

35, STEELE'S ROAD,  
 LONDON N.W.3.

RECEIVED  
 3 MAY 1989  
 DEPARTMENT  
 PLANNING AND TRANSPORT  
 LONDON BOROUGH OF CROYDON

INTEGRATED CITY INTERIORS LIMITED

SCALE 1:50 & 1:100

DATE JANUARY 1989

DRAWING NO. 890102/1