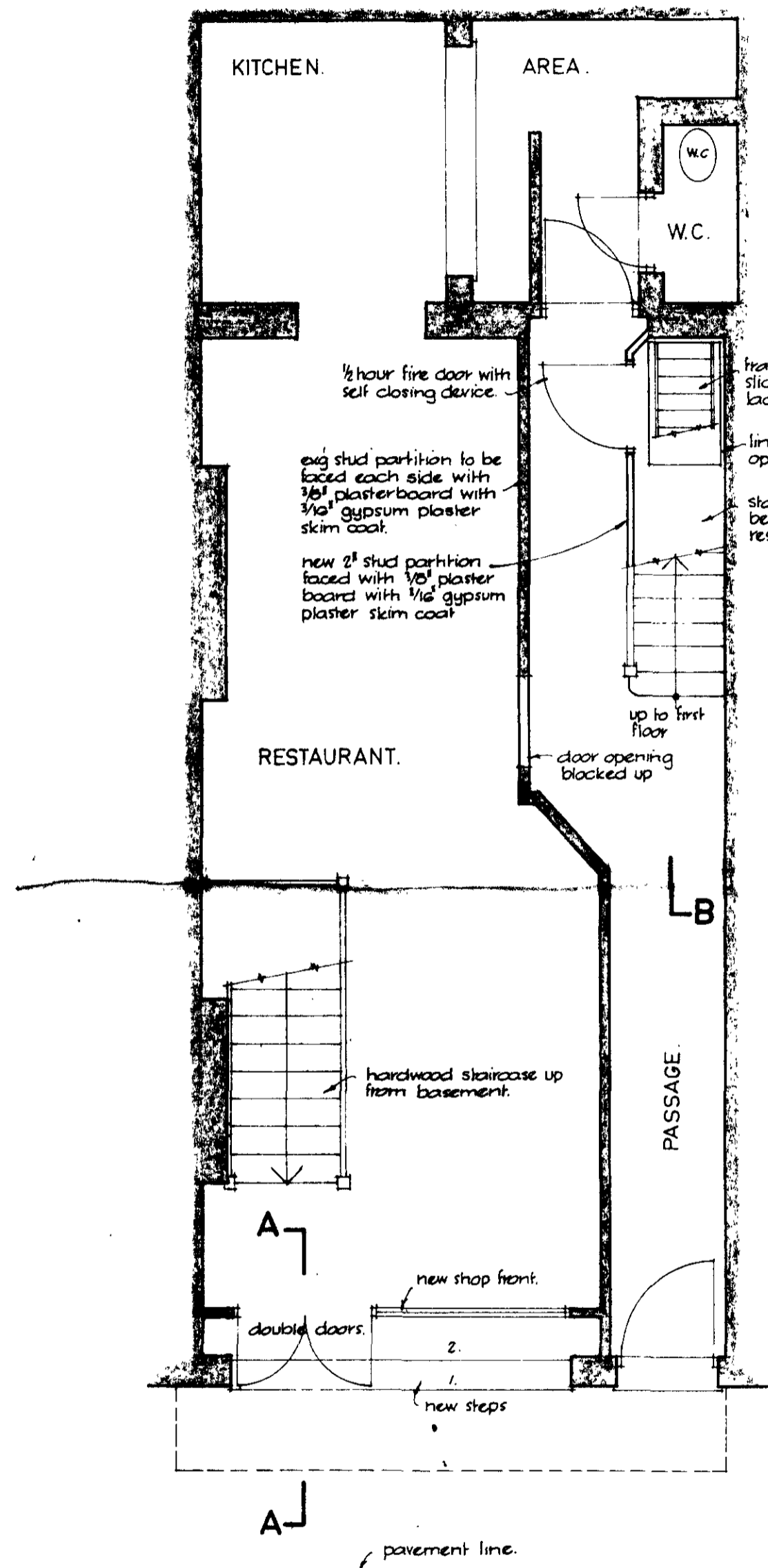
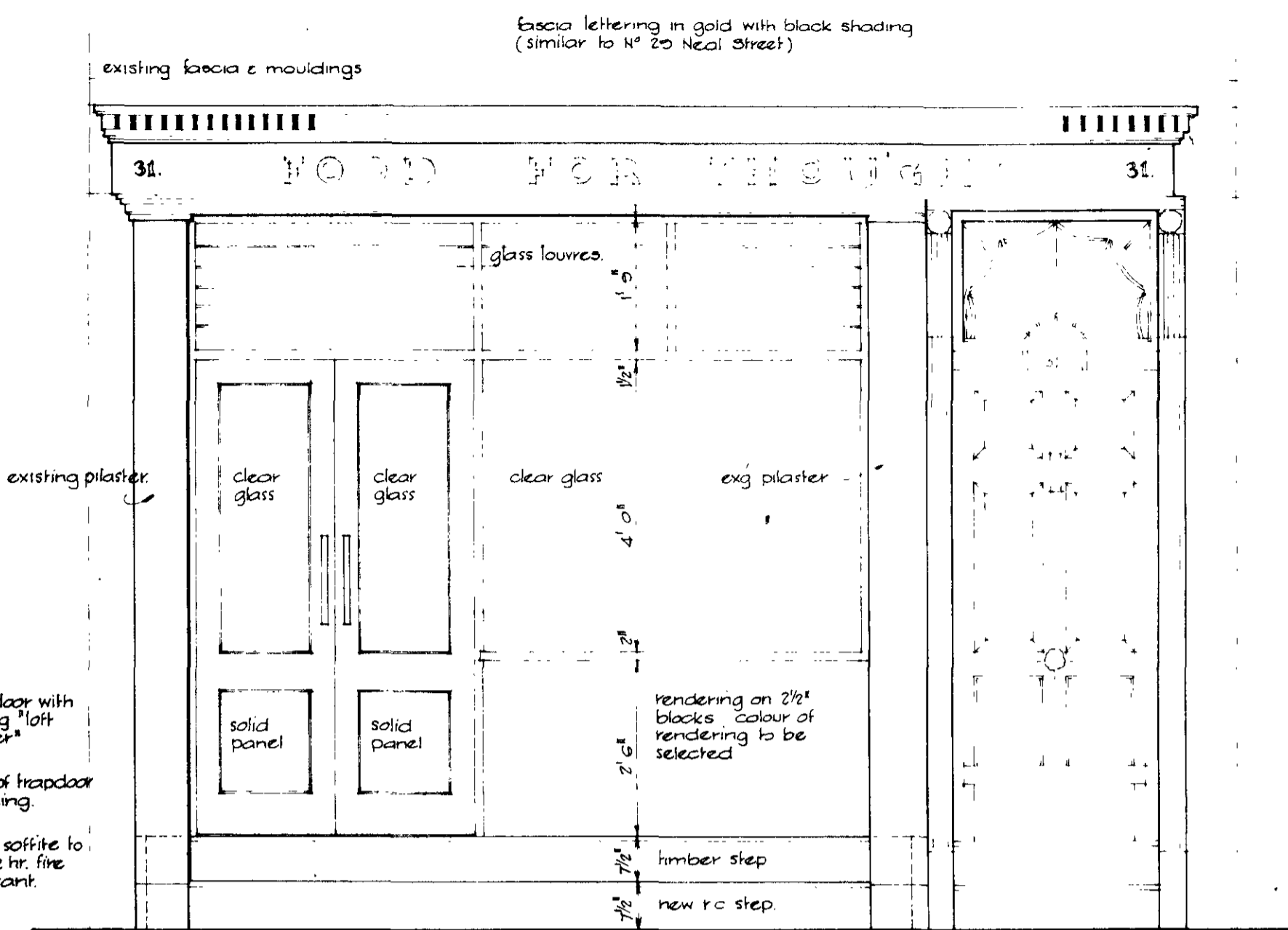


**BASEMENT PLAN.**  
Scale: 1/4" = 1' 0"

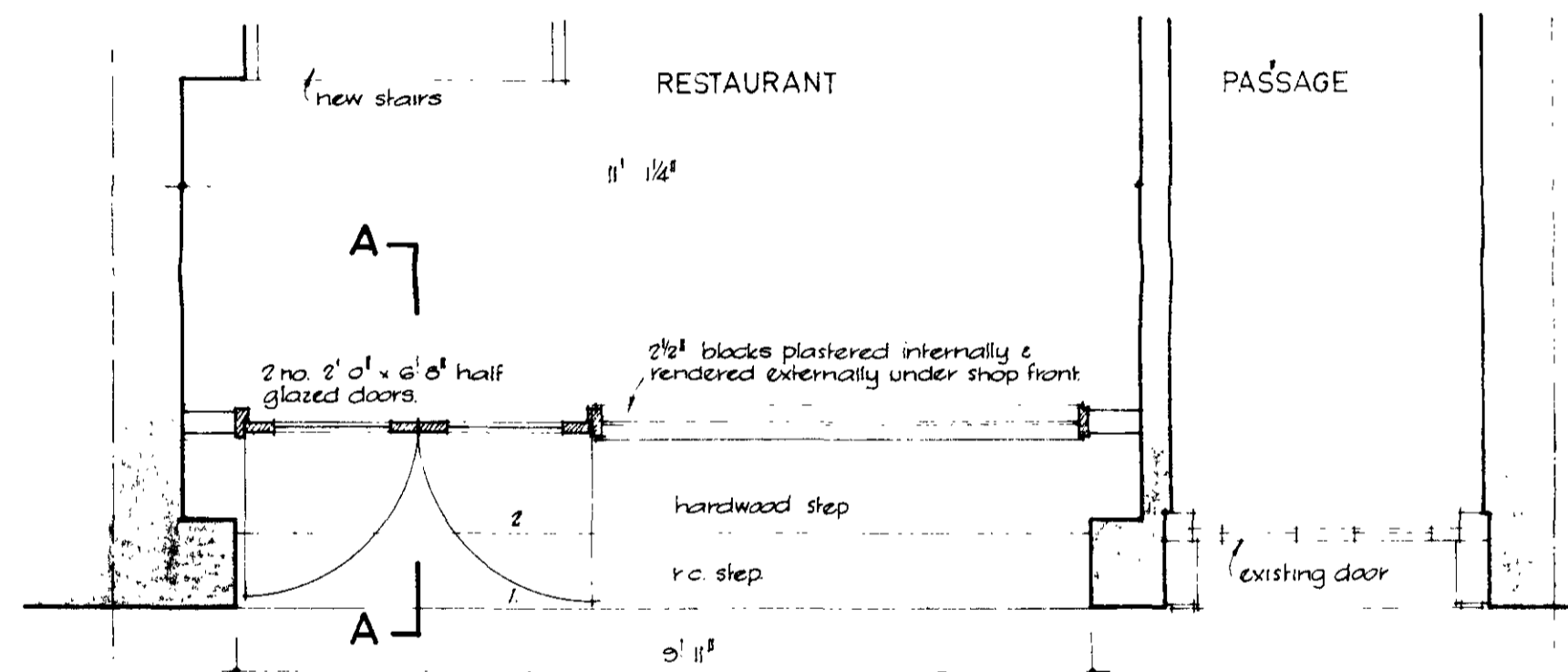
**PLANS OF RESTAURANT.**  
SHOWING MEANS OF ESCAPE IN CASE OF FIRE.



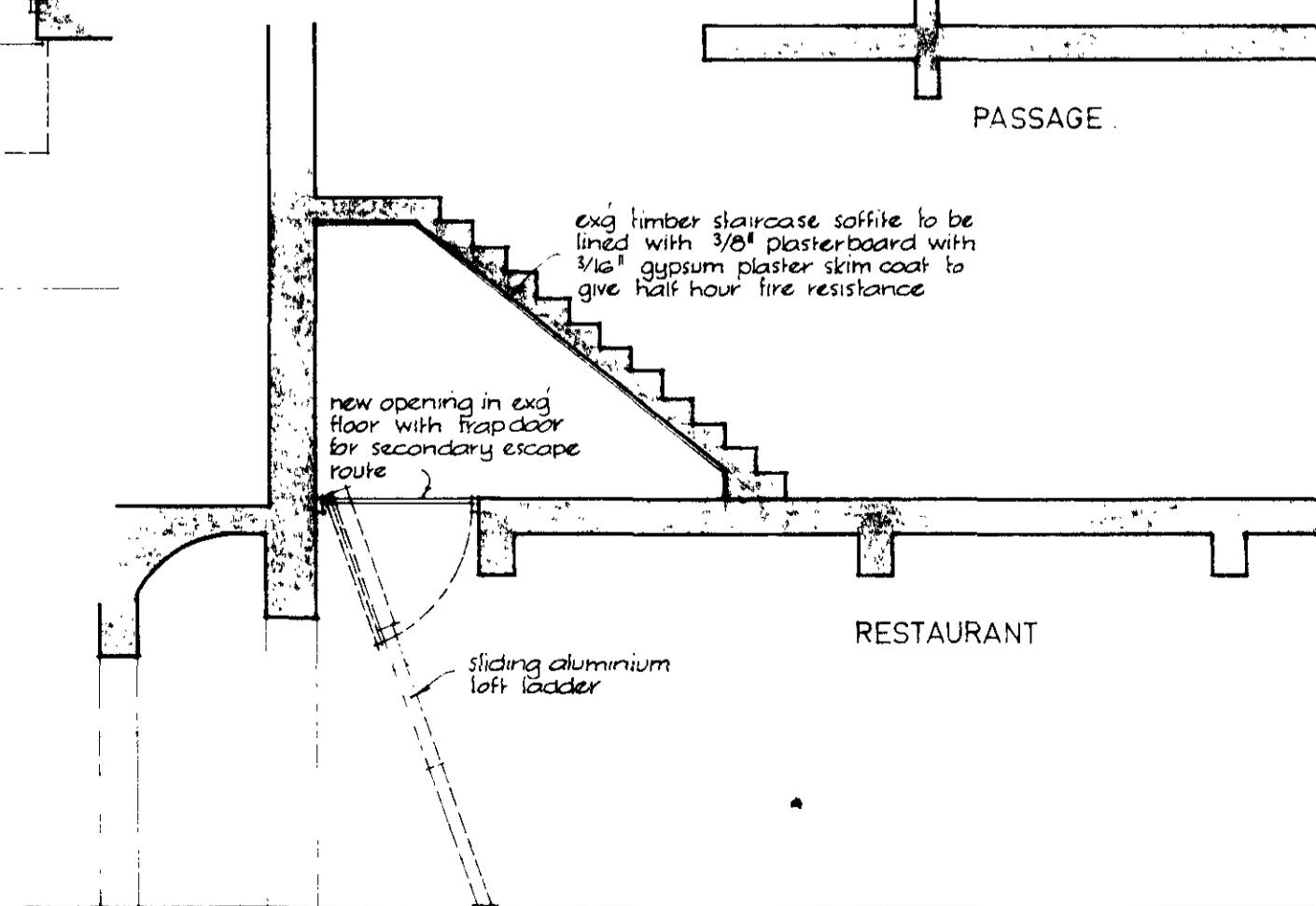
**GROUND FLOOR PLAN.**



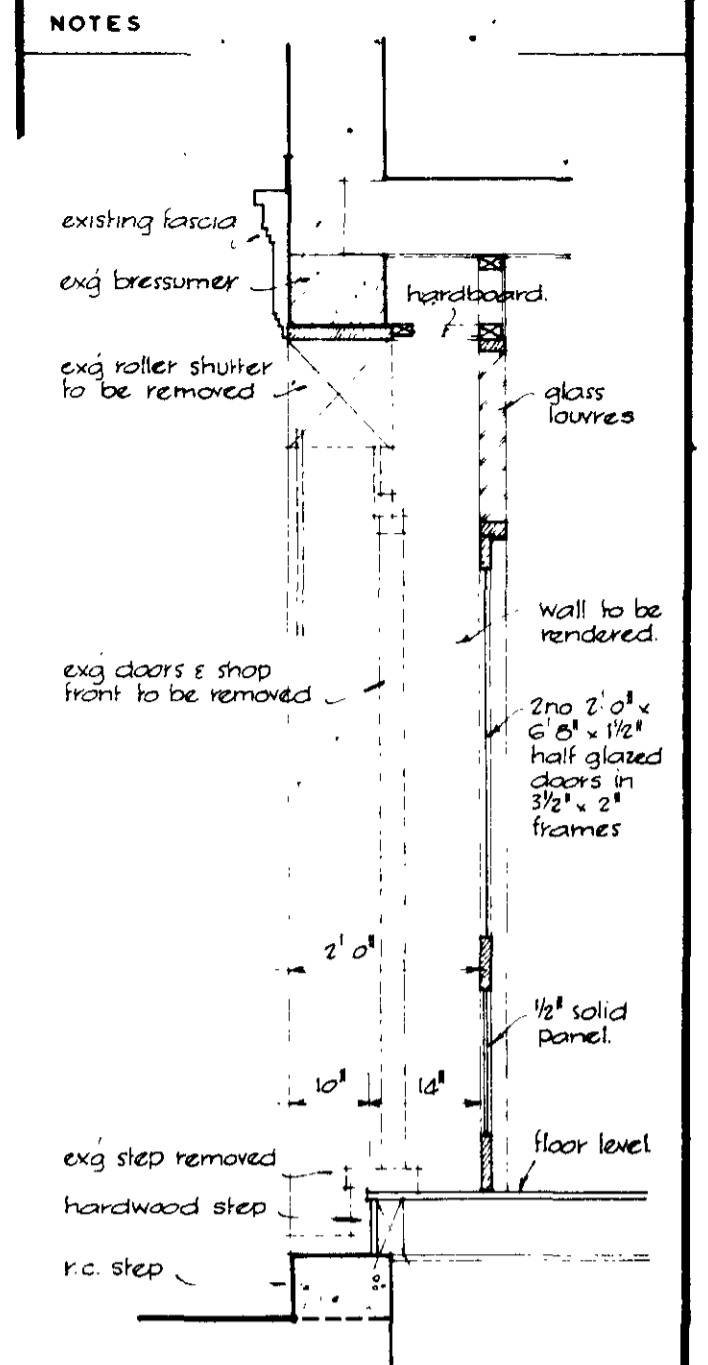
**FRONT ELEVATION.** Scale: 1/2" = 1' 0"



**PLAN OF SHOP FRONT.** Scale: 1/2" = 1' 0"



**SECTION B. B.**



**SECTION A. A.**

| REVISIONS. |    |                   |
|------------|----|-------------------|
| REV        | BY | DATE DESCRIPTION. |
|            |    |                   |
|            |    |                   |

LONDON BOROUGH OF CAMDEN  
PLANS APPROVED  
- 2 NOV 1971  
ON BEHALF OF THE COUNCIL

EDWARD C. WHARNSBY. A.R.S.H.  
119 LINDEN AVENUE.  
RUISLIP. MIDDLESEX.  
TELEPHONE 01. 866. 8112.

7/P14/55/2/1788

MRS. M. GRAINER.  
31 NEAL STREET.  
LONDON. W.C. 2.  
NEW SHOP FRONT.  
MEANS OF ESCAPE.

| ISSUED TO.                |              | DATE                   |
|---------------------------|--------------|------------------------|
| DRAWN                     | EW 31. 7. 71 | DRAWING NO<br>366.1/1. |
| TRACED                    | EW 2. 8. 71  |                        |
| CHECKED                   |              |                        |
| SCALE 1/4" = 1/2" = 1' 0" |              | SHEET 1 OF 1.          |